

Latitude 39° 30'

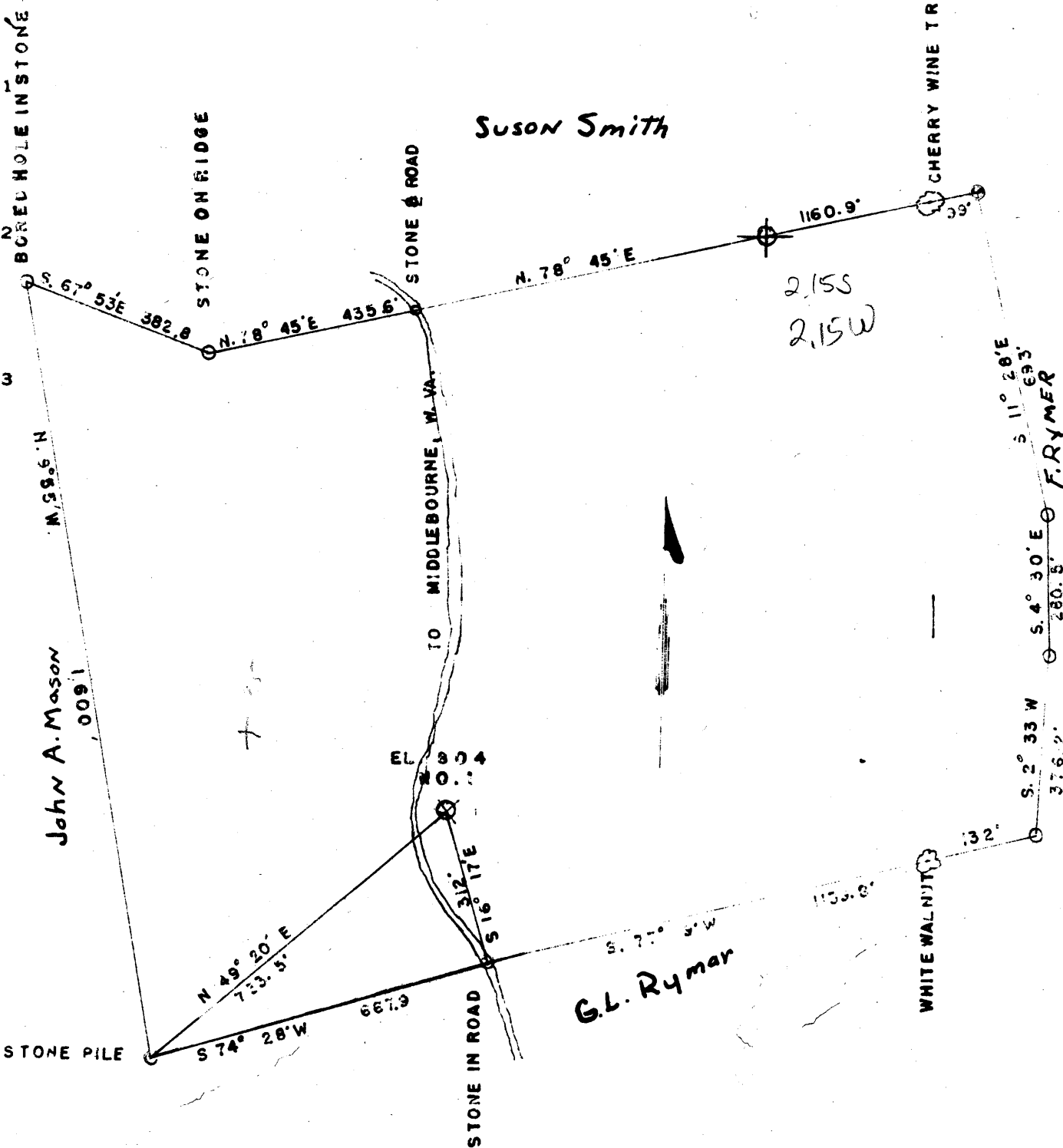
1 2 3

Longitude 80° 50'

Suson Smith

John A. Mason

G.L. Rymer



1 IN. 200' MIN

(BM 744) MIDDLEBOURNE

- New Location
- Drill Deeper
- Abandonment

never drilled - WV DEP base
6/21/95 - KLB

Company GILBERT FOUTS
 Address 720 UNION TRUST BLDG. PARKERSBURG, W. VA.
 Farm KENNETH HURST
 Tract _____ Acres 60 Lease No. _____
 Well (Farm) No. 1 Serial No. _____
 Elevation (Spirit Level) 804
 Quadrangle WEST UNION NC
 County TYLER District ELLSWORTH
 Engineer Gordon C. Ralston
 Engineer's Registration No. 4052
 File No. _____ Drawing No. _____
 Date April 4, 63 Scale 1" = 30'

STATE OF WEST VIRGINIA
 DEPARTMENT OF MINES
 OIL AND GAS DIVISION
 CHARLESTON

WELL LOCATION MAP
 FILE NO. TYL-371
enc. 8/20/1963

- Denotes location of well on United States Topographic Maps, scale 1 to 62,500, latitude and longitude lines being represented by border lines as shown.

- Denotes one inch spaces on border line of original tracing.