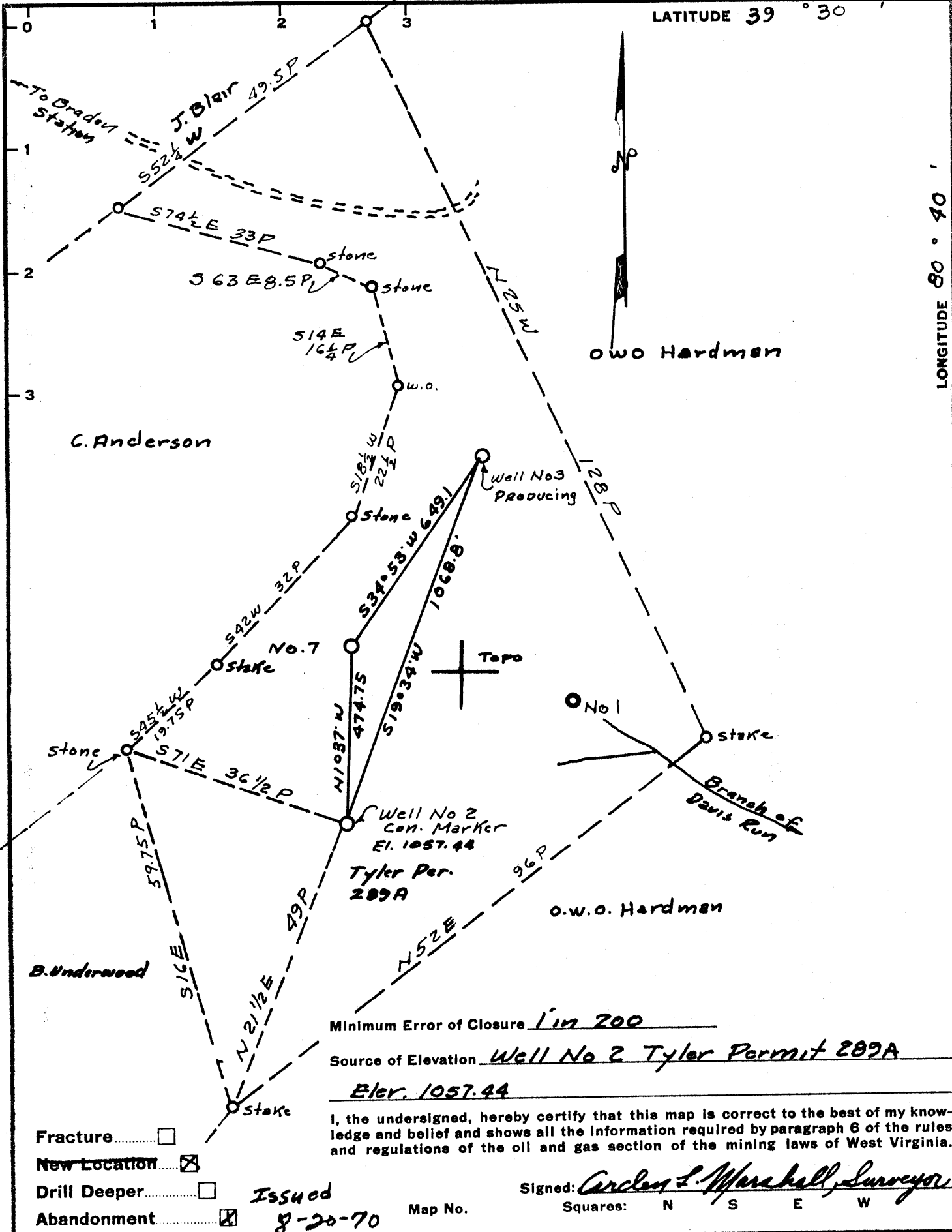


LATITUDE 39 ° 30

LONGITUDE 80 ° 40



Minimum Error of Closure 1 in 200

Source of Elevation Well No 2 Tyler Permit 289A

Elev. 1057.44

I, the undersigned, hereby certify that this map is correct to the best of my knowledge and belief and shows all the information required by paragraph 6 of the rules and regulations of the oil and gas section of the mining laws of West Virginia.

Signed: Charles S. Marshall, Surveyor
Squares: N S E W

- Fracture
 - New Location
 - Drill Deeper
 - Abandonment
- Issued 8-20-70 Map No.

Company Quaker State Oil Refg. Corp
 Address PO Box 1327 Parkersburg, W. Va.
 Farm James Gray
 Tract 46 Acres 100 Lease No. _____
 Well (Farm) No. 7 Serial No. _____
 Elevation (Spirit Level) 1114.5
 Quadrangle Centerpoint NW
 County Tyler District McElroy
 Engineer J. F. Johnston
 Engineer's Registration No. 2492
 File No. _____ Drawing No. _____
 Date July 15, 1965 Scale 1" = 330'

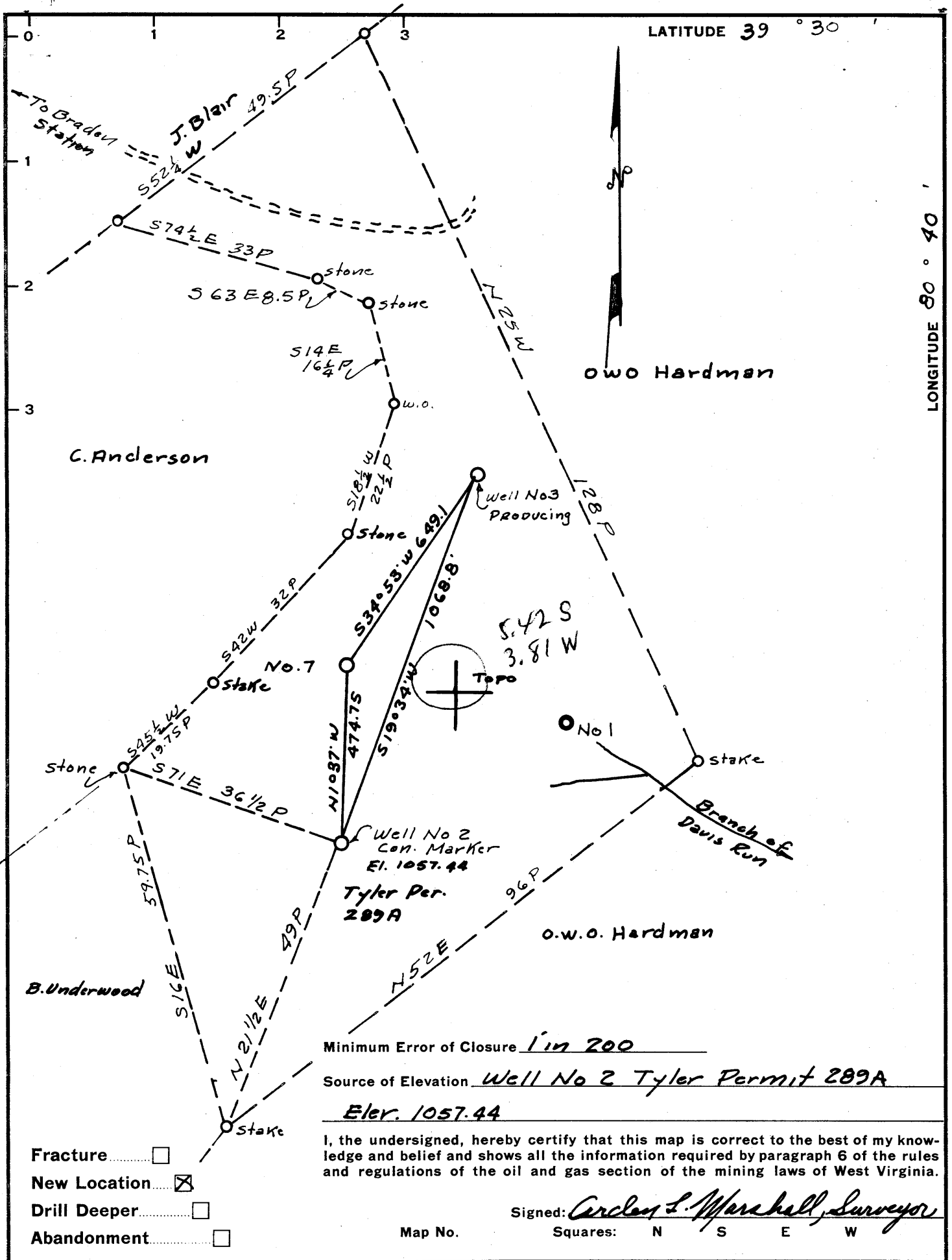
STATE OF WEST VIRGINIA
 DEPARTMENT OF MINES
 OIL AND GAS DIVISION
 CHARLESTON

WELL LOCATION MAP

FILE NO. Ty 1-390-P

+ Denotes location of well on United States Topographic Maps, scale 1 to 62,500, latitude and longitude lines being represented by border lines as shown.

- Denotes one inch spaces on border line of original tracing.



Company Quaker State Oil Refg. Corp
 Address PO Box 1327 Parkersburg, W. Va.
 Farm James Gray
 Tract 46 Acres 100 Lease No. _____
 Well (Farm) No. 7 Serial No. _____
 Elevation (Spirit Level) 1114.5
 Quadrangle Centerpoint -NW
 County Tyler District McElroy
 Engineer J. F. [Signature]
 Engineer's Registration No. 2492
 File No. _____ Drawing No. _____
 Date July 15, 1965 Scale 1" = 330'

STATE OF WEST VIRGINIA
 DEPARTMENT OF MINES
 OIL AND GAS DIVISION
 CHARLESTON

WELL LOCATION MAP

FILE NO. Ty 1 - 390

† Denotes location of well on United States Topographic Maps, scale 1 to 62,500, latitude and longitude lines being represented by border lines as shown.

— Denotes one inch spaces on border line of original tracing.



STATE OF WEST VIRGINIA
DEPARTMENT OF MINES
OIL AND GAS DIVISION

Rotary
Spudder
Cable Tools
Storage

Quadrangle Centerpoint

Permit No. Tyler - 390

WELL RECORD
IS

Oil or Gas Well Oil
(KIND)

Company Quaker State Oil Refining Corp.
Address Box 1327, Parkersburg, W. Va.
Farm James Gray Acres 100
Location (waters) Branch of Davis Run
Well No. 7 (seven) Elev. 1114.5
District McElroy County Tyler
The surface of tract is owned in fee by G.C. George
Address Alma, W. Va.
Mineral rights are owned by James Gray Hrs.
Address Middlebourne, W. Va.

Casing and Tubing	Used in Drilling	Left in Well	Packers
Size			
16			Kind of Packer
13	14	14	
10	548'	--	Size of
8 1/4	1353	--	
6 5/8	1947	1947	Depth set
5 3/16			
4 1/2			
3		2225	Perf. top
2			Perf. bottom
Liners Used			Perf. top
			Perf. bottom

Drilling commenced 7-29-65
Drilling completed 8-26-65
Date Shot From To
With
Open Flow /10ths Water in Inch
/10ths Merc. in Inch
Volume Cu. Ft.
Rock Pressure lbs. hrs.
Oil 15 BOPd bbls., 1st 24 hrs.
WELL ACIDIZED (DETAILS)

Attach copy of cementing record.
CASING CEMENTED None SIZE No. Ft. Date
Amount of cement used (bags)
Name of Service Co.
COAL WAS ENCOUNTERED AT 335 FEET 12 INCHES
815 FEET 12 INCHES FEET INCHES
FEET INCHES FEET INCHES

WELL FRACTURED (DETAILS) 12-23-65 by Dowell - used 91 bbl. of sand laden crude oil and 950# 10-20 sand

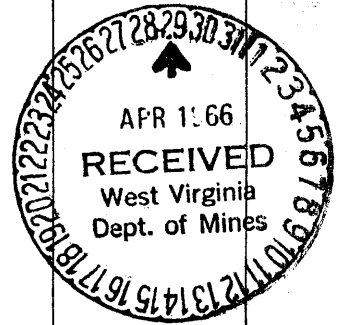
RESULT AFTER TREATMENT (Initial open Flow or bbls.) 20-BOPD - 1st 24 hours

ROCK PRESSURE AFTER TREATMENT HOURS

Fresh Water Feet Salt Water Feet

Producing Sand Injun Depth

Formation	Color	Hard or Soft	Top	Bottom	Oil, Gas or Water	Depth	Remarks
Top Soil			Surface	15			
Sandstone			15	25			
Red Rock			25	115			
Shale			115	128			
Red Rock			128	220			
Slate			220	260			
Sand			260	300			
Red Rock			300	320			
Dark Shale			320	335			
Coal			335	336			
Shale & Shells			336	375			
Lime			375	395			
Slate			395	433			
Red Rock			433	440			
Shale & Lime shells			440	455			
Red Rock			455	461			
Lime			461	468			
Shale & Shells			468	495			
Red Rock			495	530			
Shale			530	540			
Lime			540	562			
Shale & Shells			562	580			
Red Rock			580	586			
Shale & Shells			586	600			
Lime			600	612			
Red Rock			612	637			
Lime			637	704			
Shale			704	725			
Red Rock			725	735			
Shale			735	755			



Formation	Color	Hard or Soft	Top	Bottom	Oil, Gas or Water	Depth Found	Remarks
Lime & Shells			755	805			
Shale			805	815			
Pittsburgh Coal			815	816			
Shale			816	820			
Lime			820	830			
Shale			830	880			
Sand			880	906			
Shale			906	912			
Lime			912	925			
Shale & Shells			925	988			
Red Rock			988	1009			
Shale			1009	1043			
Red Rock			1043	1051			
Shale & Shells	(smell of Oil)		1051	1085			@ 1085'
Sand			1085	1098			
Shale			1098	1132			
Lime			1132	1140			
Sand			1140	1158	2048 1115		
Shale			1158	1172	933		
Red Rock			1172	1183			
Shale			1183	1190			
Sandy Lime			1190	1208			
Black Shale			1208	1256			
Sand			1256	1268			
Shale			1268	1338			
Sand			1338	1370			
Shale			1370	1442			
Sand			1442	1476			
Shale & shells			1476	1582		2048	
Sandy shale			1582	1665		1115	
Sand			1665	1690		933	
Shale			1690	1697			
Sand			1697	1725			
Shale & shells			1725	1884			
Sand			1884	1903			
Shale			1903	1938			
Lime			1938	1954			
Shale			1954	1980			
Red Rock			1980	1990			
Shale			1990	2029			
Little Lime			2029	2044			
Shale			2044	2048			
Big Lime			2048	2118			
Injun Sand			2118	2288	(show of oil & gas - 2144 - 50)		
Shale			2288	2291	(show of oil & gas - 2219 - 31)		
Sand			2291	2299			
Shale & Shells			2299	2344			
Total Depth				2344			

LOGS: Gamma Ray
Neutron
Density

Date April 27, 196

APPROVED Quaker State Oil Refining Corp. Own

By Thomas H Richards
(Title)