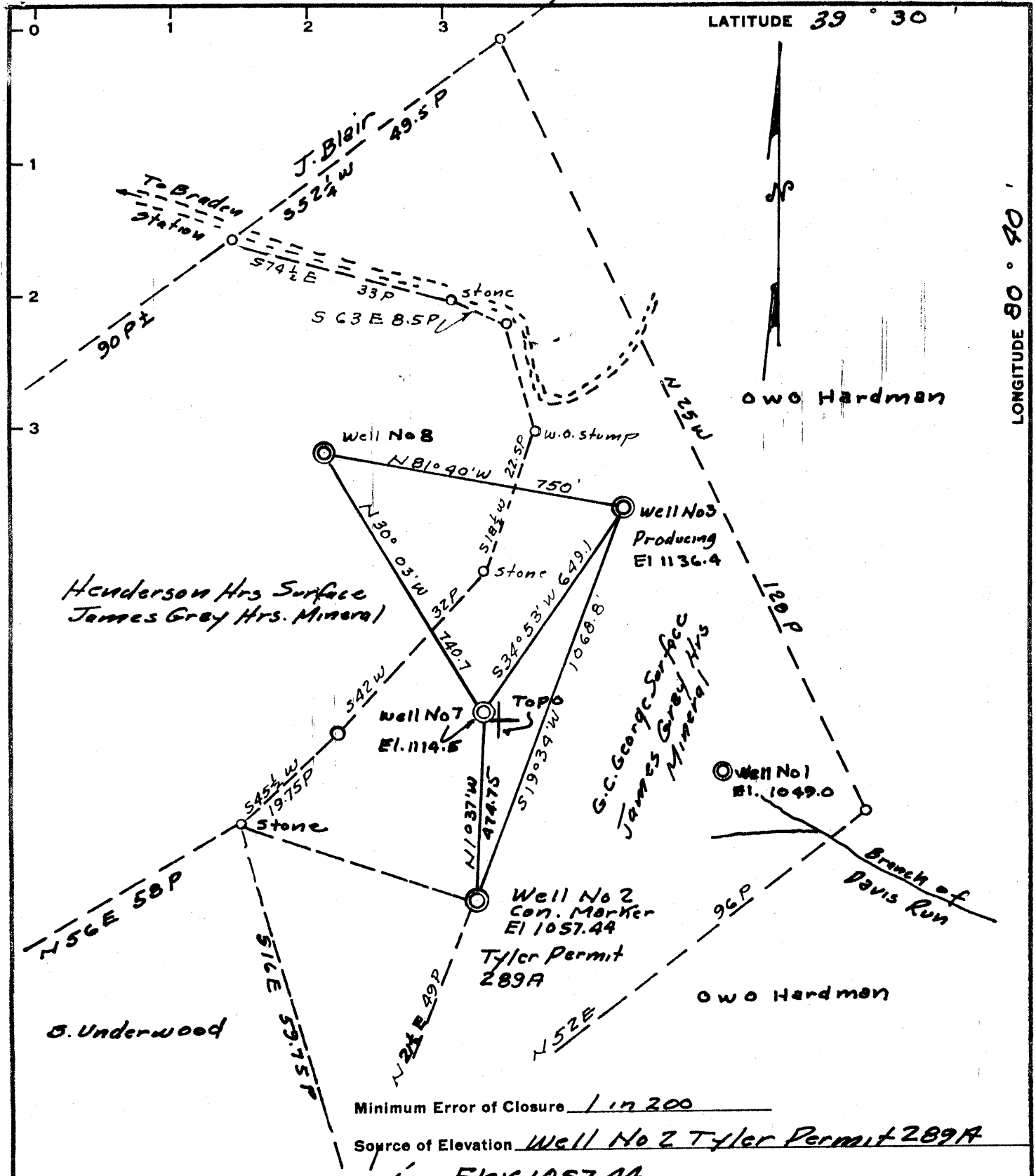


LATITUDE 39° 30'

LONGITUDE 80° 30'



Minimum Error of Closure 1 in 200

Source of Elevation Well No 2 Tyler Permit 289A
Elev 1057.44

- Fracture
- New Location
- Drill Deeper
- Abandonment

Issued 8-20-70 Map No. _____

Signed: [Signature]
Squares: N S E W

Company Quaker State Oil Refg. Corp.
 Address P.O. Box 1327 Parkersburg, W. Va
 Farm James Gray Hrs
 Tract 45 1/2 Acres 100 Lease No. _____
 Well (Farm) No. B Serial No. _____
 Elevation (Spirit Level) 1038.7
 Quadrangle Centerpoint NW
 County Tyler District McElroy
 Engineer [Signature]
 Engineer's Registration No. 2492
 File No. _____ Drawing No. _____
 Date Sept 20, 1965 Scale 1" = 330'

STATE OF WEST VIRGINIA
 DEPARTMENT OF MINES
 OIL AND GAS DIVISION
 CHARLESTON

WELL LOCATION MAP

FILE NO. TYL-392-P

+ Denotes location of well on United States Topographic Maps, scale 1 to 62,500, latitude and longitude lines being represented by border lines as shown.
 - Denotes one inch spaces on border line of original tracing.



STATE OF WEST VIRGINIA
DEPARTMENT OF MINES
OIL AND GAS DIVISION 22

Rotary
Spudder
Cable Tools
Storage

Quadrangle Centerpoint

WELL RECORD

Permit No. Tyler - 392

Oil or Gas Well Oil
(KIND)

Company QUAKER STATE OIL REFINING CORPORATION
Address P. O. Box 1327, Parkersburg, W. Va.
Farm James Gray Heirs Acres 100
Location (waters) Branch of Davis Run
Well No. 8 (Eight) Elev 1038.7
District Mc Elroy County Tyler
The surface of tract is owned in fee by G. C. George
Address Alma, W. Va.
Mineral rights are owned by James Gray Heirs
Address Middlebourne, W. Va.
Drilling commenced 10-6-65
Drilling completed 11-4-65
Date Shot From To
With

Casing and Tubing	Used in Drilling	Left in Well	Packers
Size			Kind of Packer
16			
13	16'	--	
10 5/8	431	--	Size of
8 1/4	1228	--	
7"	1950	1754	Depth set
5 3/16		2216	
4 1/2			Perf. top
3		2156	Perf. bottom
2			Perf. top
Liners Used			Perf. bottom

Open Flow /10ths Water in Inch
/10ths Merc. in Inch
Volume Cu. Ft.
Rock Pressure lbs. hrs.
Oil bbls., 1st 24 hrs.

Attach copy of cementing record.
CASING CEMENTED 4 1/2" SIZE 2216 No. Ft. 11-19-65 Date
Amount of cement used (bags) 50'3 of Pozmix
Name of Service Co. Dowell
COAL WAS ENCOUNTERED AT FEET INCHES
705 FEET show INCHES FEET INCHES
FEET INCHES FEET INCHES

WELL ACIDIZED (DETAILS)
WELL FRACTURED (DETAILS) by Halliburton on 11-29-65 in 3 stages - used 8900# 10-20 sand & 13,500 gal. of sand laden fluid
RESULT AFTER TREATMENT (Initial open Flow or bbls.) 3.20 bopd and 10,200 cf/day
ROCK PRESSURE AFTER TREATMENT HOURS
Fresh Water 70 - 80 Feet Salt Water 1165 Feet
Producing Sand Injun Depth

3 bbls Oil/day

Formation	Color	Hard or Soft	Top	Bottom	Oil, Gas or Water	Depth	Remarks
Clay			0	15			
Red rock			15	40			
Sand			40	47			
Shale & shells			47	95	Water 70-80'	- 3 - 13" bailers/hr.	
Red rock			95	102			
Shale			102	112			
Red rock			112	118			
Lime			118	125			
Shale			125	136			
Red rock			136	147			
Lime & sand			147	185			
Shale			185	197			
Lime			197	207			
Shale			207	217			
Lime			217	227			
Coal			227	228			
Sand & shale			228	250			
Lime			250	257			
Gritty shale			257	270			
Sand			270	290			
Red rock			290	297			
B. shale & shells			297	357			
Lime			357	367			
Shale & L. Shells			367	395			
Red rock			395	400			
Shale & shells			400	428			
Lime (Gritty)			428	455			
Shale			455	485			
Lime			485	498			
Slate & shells			498	518			



Formation	Color	Hard or Soft	Top 22	Bottom	Oil, Gas or Water	Depth Found	Remarks
Red rock			518	525			
Lime			525	551			
Red rock			551	554			
Lime			554	587			
Shale			587	605			
Lime			605	612			
Shale			612	620			
Red rock			620	625			
Shale & L. Shells			625	670			
Lime			670	680			
Shale & shells			680	698			
Lime			698	705			
Shale			705	712			
Lime			712	725			
Shale			725	775			
Sand			775	795			
Shale			795	805			
Lime			805	817			
Shale & shells			817	897			
Sand			897	915			
Shale & red rock			915	940			
Lime			940	947			
Shale			947	957			
Lime			957	965			
Sandy			965	985	Smell of oil - 980'		
Shale			985	995			
Lime			995	1010			
Sand			1010	1047			
Shale			1047	1051			
Lime			1051	1070			
Shale			1070	1084			
Sandy lime			1084	1090			
Shale			1090	1110			
Sand			1110	1126			
Shale			1126	1134			
Lime			1134	1162			
Sand			1162	1196	Show of oil & wtr. 1165-79 - 1 - 10"		bailer per 2 hr
Shale (black)			1196	1220			
Lime			1220	1238			
Sand			1238	1275			
Shale & lime			1275	1349			
Lime			1349	1364			
Sand			1364	1390	Show of oil 1364-70		
Slate & shells			1390	1500			
Shale			1500	1530			
Sand			1530	1545			
Shale			1545	1565			
Sand			1565	1612			
Shale			1612	1635			
Sand			1635	1650			
Shale & shells			1650	1701			
Sand			1701	1740			
Slate			1740	1774			
Sand			1774	1795			
Shale			1795	1833			
Lime			1833	1850			
Sand			1850	1896			
Slate			1896	1910			
L. Lime			1910	1926			
Shale			1926	1930			
E. Lime			1930	2000			
X. Sand			2000	2025	Show of oil & gas 2021-30		
Pay sand			2025	2030			
Sand			2030	2039			
Sand			2039	2053	Additional gas 2039-50		
Sand			2053	2056			
Sand			2056	2070	Show of oil 2056-70		

Date January 10, 1966

APPROVED QUAKER STATE OIL REFINING CORPORATION Owner
 By Thomas H. Richard
 (Title) Engineer



STATE OF WEST VIRGINIA
DEPARTMENT OF MINES
OIL AND GAS DIVISION 22A

- Rotary
- Spudder
- Cable Tools
- Storage

Quadrangle Centerpoint

Permit No. Tyler - 392

WELL RECORD

Oil or Gas Well (KIND)

Company QUAKER STATE OIL REFINING CORPORATION
 Address P. O. BOX 1327, Parkersburg, W. Va.
 Farm James Gray Heirs Acres 100
 Location (waters) Branch of Davis Run
 Well No. 8 (Eight) Elev. 1038.7
 District McElroy County Tyler
 The surface of tract is owned in fee by G. C. George
 Address Alma, W. Va.
 Mineral rights are owned by James Gray Heirs
 Address Middlebourne, W. Va.

Drilling commenced 10-6-65
 Drilling completed 11-4-65
 Date Shot From To
 With
 Open Flow /10ths Water in Inch
 /10ths Merc. in Inch
 Volume Cu. Ft.
 Rock Pressure lbs. hrs.
 Oil bbls., 1st 24 hrs.

Casing and Tubing	Used in Drilling	Left in Well	Packers
Size			Kind of Packer
16			
13			
10			Size of
8 1/4			
6 3/4			Depth set
5 3/16			
4 1/2			
3			Perf. top
2			Perf. bottom
Liners Used			Perf. top
			Perf. bottom

WELL ACIDIZED (DETAILS)
 WELL FRACTURED (DETAILS)

Attach copy of cementing record.
 CASING CEMENTED SIZE No. Ft. Date
 Amount of cement used (bags)
 Name of Service Co.
 COAL WAS ENCOUNTERED AT FEET INCHES
 FEET INCHES FEET INCHES
 FEET INCHES FEET INCHES

RESULT AFTER TREATMENT (Initial open Flow or bbls.)
 ROCK PRESSURE AFTER TREATMENT HOURS
 Fresh Water Feet Salt Water Feet
 Producing Sand Depth

Formation	Color	Hard or Soft	Top	Bottom	Oil, Gas or Water	Depth	Remarks
JAMES GRAY HEIRS WELL NO. 8 Lithology continued (Page No. 2)							
Sand			2070	2108			
Sand			2108	2123	Show of oil	2108-23	
Sand			2123	2167			
Sand			2167	2178	Show of oil	2167-78	
Sand			2178	2193			
Shale			2193	2216			
				2216	Total Depth		
LOGGED 11-5-65 by Birdwell: Gamma Ray, Neutron and Density							
PERFORATIONS: (GR-N) 2100 - 20 (5 holes) 2040 - 60 (5 holes) 2013 - 20 (5 holes) } Injun							

