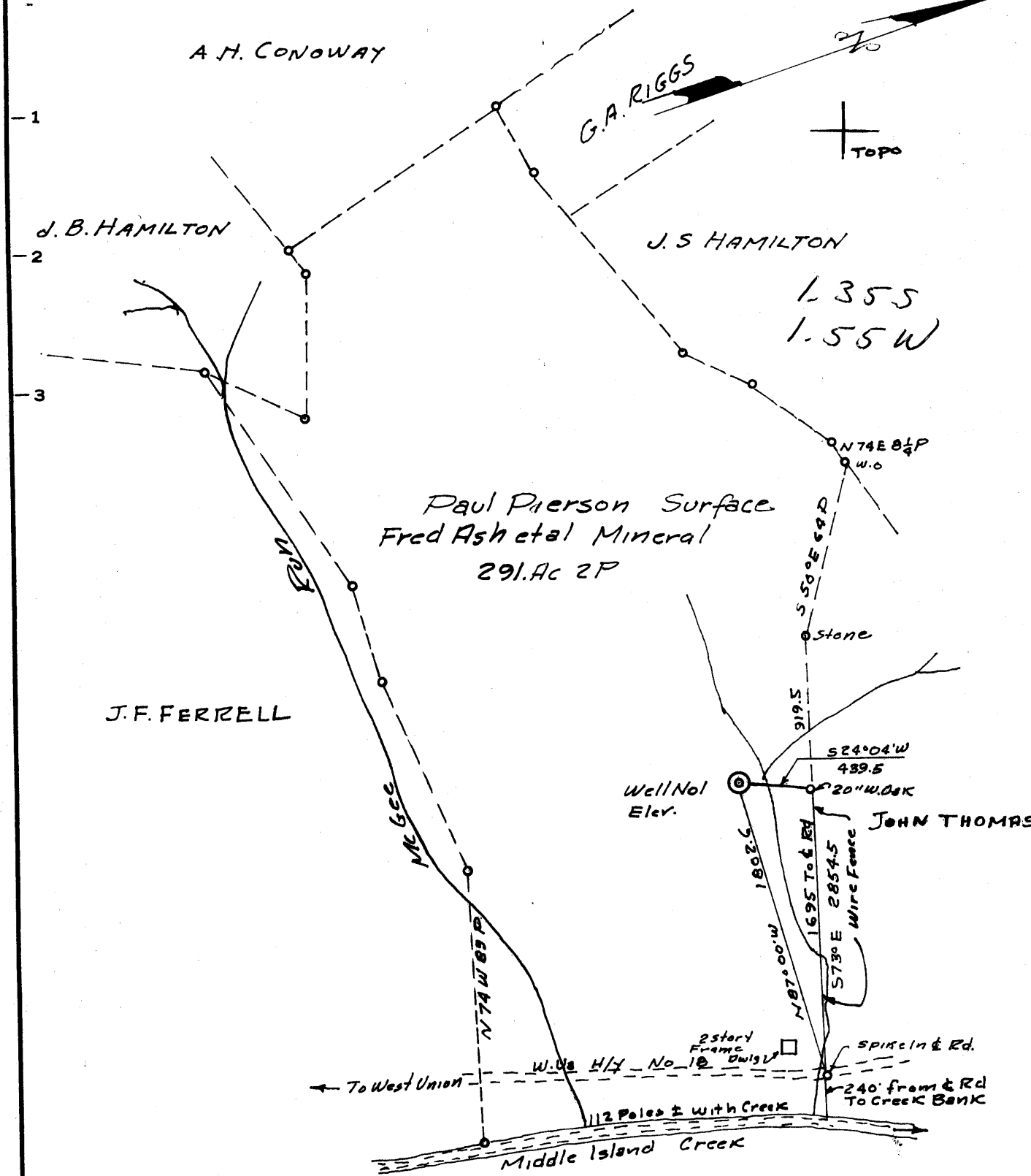


Latitude 39° 25'

Longitude 80° 50'



MINIMUM ERROR OF CLOSURE 1' in 200'

SOURCE OF ELEVATION USGS Elev @ Intersection of W. Va Highway No 10 & Purgatory Run Road Elev. 715.0

New Location    
 Drill Deeper    
 Abandonment

"I, THE UNDERSIGNED, HEREBY CERTIFY THAT THIS MAP IS CORRECT TO THE BEST OF MY KNOWLEDGE AND BELIEF AND SHOWS ALL THE INFORMATION REQUIRED BY PARAGRAPH 6 OF THE RULES AND REGULATIONS OF THE OIL AND GAS SECTION OF THE MINING LAWS OF WEST VIRGINIA."

Company QUAKER STATE OIL REFG. CORP.  
 Address P.O. Box 1327 Parkersburg, W. Va.  
Paul Pierson Surface  
 Farm/Tract Haystack Ash et al Mineral  
 Tract 291 Ac 2P Acres \_\_\_\_\_ Lease No. \_\_\_\_\_  
 Well (Farm) No. ONE Serial No. \_\_\_\_\_  
 Elevation (Spirit Level) 814.60  
 Quadrangle West Union - C  
 County Tyler District Centerville  
 Engineer J. H. Johnston  
 Engineer's Registration No. 2492  
 File No. \_\_\_\_\_ Drawing No. \_\_\_\_\_  
 Date NOV 23, 1966 Scale 1" = 50 Feet

STATE OF WEST VIRGINIA  
 DEPARTMENT OF MINES  
 OIL AND GAS DIVISION  
 CHARLESTON

**WELL LOCATION MAP**  
 FILE NO. Tyler-407

+ Denotes location of well on United States Topographic Maps, scale 1 to 62,500, latitude and longitude lines being represented by border lines as shown.

— Denotes one inch spaces on border line of original tracing.



STATE OF WEST VIRGINIA  
DEPARTMENT OF MINES  
OIL AND GAS DIVISION 14

Rotary   
Spudder   
Cable Tools   
Storage

Quadrangle West Union  
Permit No. TYL-407

**WELL RECORD**

Oil or Gas Well Gas  
(KIND)

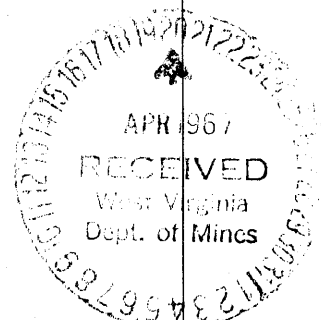
Company Quaker State Oil Refining Corporation  
Address P. O. Box 1327, Parkersburg, W. Va.  
Farm Harry Ash Acres 291  
Location (waters) Middle Island Creek  
Well No. One (1) Elev. \_\_\_\_\_  
District Centerville County Tyler  
The surface of tract is owned in fee by \_\_\_\_\_  
Address \_\_\_\_\_  
Mineral rights are owned by Harry Ash et al  
Address Alma, W. Va.  
Drilling commenced 12-27-66  
Drilling completed 1-18-67  
Date Shot \_\_\_\_\_ From \_\_\_\_\_ To \_\_\_\_\_  
With \_\_\_\_\_  
Open Flow 1/10ths Water in \_\_\_\_\_ Inch  
1/10ths Merc. in \_\_\_\_\_ Inch  
Volume 1,437,000 cf Cu. Ft.  
Rock Pressure 670 lbs. 16 hrs.  
Oil \_\_\_\_\_ bbls., 1st 24 hrs.  
WELL ACIDIZED (DETAILS) NO  
WELL FRACTURED (DETAILS) NO

Casing and Tubing	Used in Drilling	Left in Well	Packers
Size			Kind of Packer
16	16	16	
13	400	400	Size of
10	1087	1087	Depth set
8 1/4	1719	1719	
6 3/4 (17#)			
5 3/16			Perf. top
4 1/2			Perf. bottom
3			Perf. top
2			Perf. bottom
Liners Used			

Attach copy of cementing record.  
CASING CEMENTED NO SIZE \_\_\_\_\_ No. Ft. \_\_\_\_\_ Date \_\_\_\_\_  
Amount of cement used (bags) \_\_\_\_\_  
Name of Service Co. \_\_\_\_\_  
COAL WAS ENCOUNTERED AT 570 FEET 12 INCHES  
\_\_\_\_\_ FEET \_\_\_\_\_ INCHES FEET \_\_\_\_\_ INCHES  
\_\_\_\_\_ FEET \_\_\_\_\_ INCHES FEET \_\_\_\_\_ INCHES

RESULT AFTER TREATMENT (Initial open Flow or bbls.) \_\_\_\_\_  
ROCK PRESSURE AFTER TREATMENT \_\_\_\_\_ HOURS \_\_\_\_\_  
Fresh Water None Feet \_\_\_\_\_ Salt Water 346 & 1250 Feet \_\_\_\_\_  
Producing Sand Injun Depth \_\_\_\_\_

Formation	Color	Hard or Soft	Top	Bottom	Oil, Gas or Water	Depth	Remarks
Red clay			0	20			
Soap stone			20	28			
Lime			28	34			
Red rock			34	48			
Shale			48	70			
Red rock			70	85			
Shale & lime shells			85	155			
Red rock & shale			155	190			
Lime			190	205			
Shale			205	225			
Lime			225	232			
Shale			232	245			
Lime			245	262			
Shale			262	268			
Lime			268	280			
Red rock			280	303			
Lime			303	340			
Shale			340	346			
Sand			346	370			
Shale			370	397			
Lime			397	420			
Shale			420	494			
Lime			494	514			
Shale			514	530			
Lime			530	537			
Shale			537	570			
Coal (Pgh.)			570	571			
Shale & shells			571	600			
Red rock			600	620			
Lime			620	633			



2 - 13" bailers water/hr. 346-70

Formation	Color	Hard or Soft	Top 14	Bottom	Oil, Gas or Water	Depth Found	Remarks
Shale & Lime			633	655			
Red rock			655	688			
Shale			688	704			
Red rock			704	722			
Lime			722	745			
Shale			745	755			
Lime			755	760			
Shale (Dark)			760	768			
Lime			768	776			
Shale			776	796			
Lime			796	815			
Pink Rock			815	830			
Shale & L. shells			830	855			
Lime (gritty)			855	864			
Shale	Black		864	898			
Lime			898	915			
Shale			915	958			
Sand-Little Dunkard			958	1030			
Shale shells			1030	1040			
Lime			1040	1055			
Shale			1055	1080			
Sand			1080	1115			
Shale			1115	1137			
Gritty lime (sand)			1137	1175			
Shale			1175	1220			
Gas Sand 2nd			1220	1265	Water @ 1250' - 1 - 8" bailer/hr.		
Shale			1265	1295			
1st Salt Sand			1295	1340			
Shale shells			1340	1420			
Shale	Black		1420	1460	1687		
2nd Salt Sand			1460	1530	815		
Slate			1530	1540	872		
Shale & shells			1540	1560			
Sand			1560	1582			
Shale	Black	Soft	1582	1603			
Sand			1603	1648			
Shale shells			1648	1666			
Lime			1666	1680			
Shale	Black	Soft	1680	1687			
Big Lime			1687	1764			
Big Injun			1764		Gas pay 1774 - 78		
TOTAL DEPTH				1778			

Date April 18, 19<sup>67</sup>

APPROVED QUAKER STATE OIL REFINING CORPORATION, Owner

By Thomas H. Richard  
(Title) Engineer