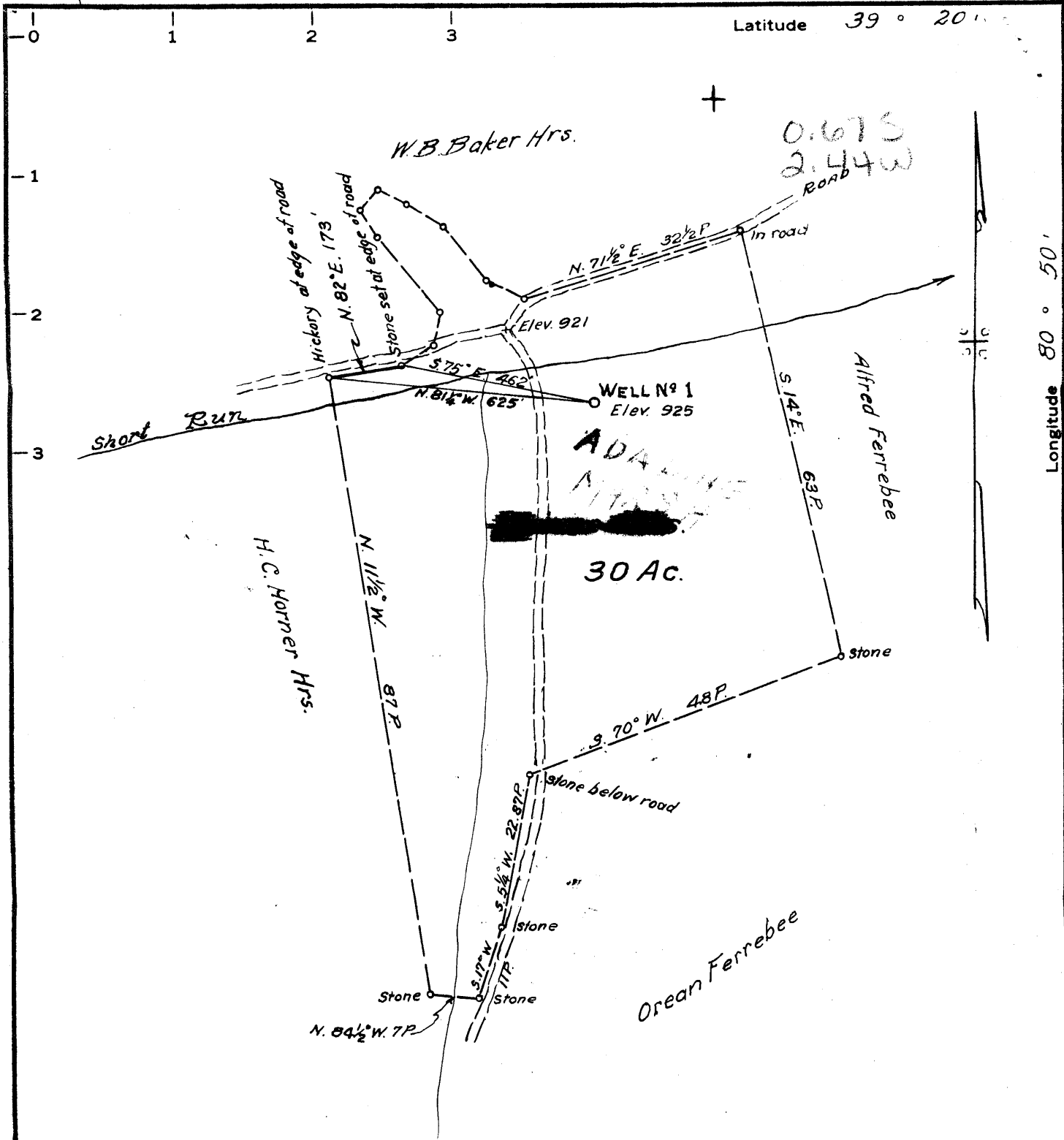


M

P



Latitude 39° 20'

Longitude 80° 50'

MINIMUM ERROR OF CLOSURE 1/500

SOURCE OF ELEVATION Junction of roads about 500' N.W. of location

Elev. 921

New Location

Drill Deeper

Abandonment

"I, THE UNDERSIGNED, HEREBY CERTIFY THAT THIS MAP IS CORRECT TO THE BEST OF MY KNOWLEDGE AND BELIEF AND SHOWS ALL THE INFORMATION REQUIRED BY PARAGRAPH 6 OF THE RULES AND REGULATIONS OF THE OIL AND GAS SECTION OF THE MINING LAWS OF WEST VIRGINIA."

Lyle K. Baker and

Company Baker Development Co.  
 Address 63 Forest St., Akron, Ohio  
 Farm ~~MAASH~~ Hrs  
 Tract 1 Acres 30 Lease No. \_\_\_\_\_  
 Well (Farm) No. 1 Serial No. \_\_\_\_\_  
 Elevation (Spirit Level) 925  
 Quadrangle West Union 5C  
 County Tyler District Centerville  
 Engineer Parker E. Peters  
 Engineer's Registration No. 485  
 File No. \_\_\_\_\_ Drawing No. \_\_\_\_\_  
 Date Aug. 17, 1965 Scale 1" = 20P.

STATE OF WEST VIRGINIA  
 DEPARTMENT OF MINES  
 OIL AND GAS DIVISION  
 CHARLESTON

WELL LOCATION MAP  
 FILE NO. Tyler 409

+ Denotes location of well on United States Topographic Maps, scale 1 to 62,500, latitude and longitude lines being represented by border lines as shown.

- Denotes one inch spaces on border line of original tracing.



STATE OF WEST VIRGINIA  
DEPARTMENT OF MINES  
OIL AND GAS DIVISION 24

Rotary   
Spudder   
Cable Tools   
Storage

Quadrangle Middlebourne

Permit No. TYL-409

WELL RECORD

Oil or Gas Well Oil & Gas  
(KIND)

Company Baker Development Co. L.K. Baker  
Address 63 Forrest St. Akron, Ohio 44306  
Farm Adaline Marsh Acres 30  
Location (waters) Short Run  
Well No. 1 Elev. 925  
District Centerville County Tyler  
The surface of tract is owned in fee by Orean Ferree  
159 Orpha St. Address Weirton, W. Va.  
Mineral rights are owned by 1/2 Orean Ferree & 1/2 Marsh heirs  
159 Orpha St. Address 258 Ido Ave. Weirton, W. Va. Akron, Ohio  
Drilling commenced December 7, 1966  
Drilling completed January 17, 1967  
Date Shot From To  
With

Agent and Tubing	Used in Drilling	Left in Well	Packer
Size			
16	16ft	16 ft	Kind of Packer
13			
10	480 ft	none	Size of
8 3/4	1009 ft	none	
6 3/4	1400 ft	none	Depth set
5 3/16			
4 1/2		2288 ft	
3			Perf. top
2			Perf. bottom
Liners Used			Perf. top
			Perf. bottom

Open Flow /10ths Water in Inch  
/10ths Merc. in Inch  
Volume 700 thousand 700,000 MCF Cu. Ft.  
Rock Pressure 580 lbs. 24 hrs.  
Oil 15 bbls., 1st 24 hrs.

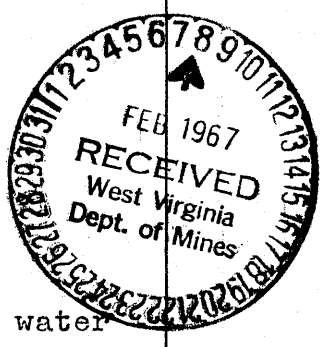
Attach copy of cementing record.  
CASING CEMENTED 4 1/2 SIZE 688 No. Ft. 1/10/67 Date  
Amount of cement used (bags) 83  
Name of Service Co. Dowell Co.

WELL ACIDIZED (DETAILS)  
WELL FRACTURED (DETAILS) January 23, 1967--1600 bbls. water

COAL WAS ENCOUNTERED AT none FEET. INCHES  
FEET. INCHES FEET INCHES  
FEET INCHES FEET INCHES

RESULT AFTER TREATMENT (Initial open flow or bbls.) 15 bbls. of oil open flow 20/10ths in 2 inches  
ROCK PRESSURE AFTER TREATMENT 580 HOURS 24  
Fresh Water only fracture Feet Salt Water Feet  
Producing Sand Big Injun and Weir Depth 1892 ft & 2234

Formation	Color	Hard or Soft	Top	Bottom	Oil, Gas or Water	Depth	Remarks
soil			0	12			
Red Rock			12	18			
Slate			18	26			
Sand	gray	soft	26	32			
Red Rock			32	36			
Slate			36	85			
Red Rock			85	124			
slate			124	130			
Red Rock							
Slate			130	250			
Sand			250	265			
Slate &							
Red Rock			265	318			
Lime			318	336			
Red Rock			336	346			
Slate			346	360			
Red Rock			360	380			
Sand			380	464			
Slate			464	510			
Sand			510	525			
Slate			525	540			
Lime			540	550			
Slate			550	650			
Sand			650	667			
Red Rock			667	675			
Slate			675	716			
Red Rock			716	772			
Sand			772	780			



Formation	Color	Hard or Soft	Top 4'	Bottom	Oil, Gas or Water	Depth Found	Remarks
Slate & Shells			780	825			
Sand			825	840			
Slate & Shells			840	880			
Red Rock			880	900			
Slate			900	920			
Sand			920	930			
Slate & Shells			930	945			
Sand			945	995			
Slate & Shells			995	1009			
Sand			1009	1037			
Slate			1037	1065			
Sand			1065	1142			
Slate			1142	1190			
Sand			1190	1215			
Slate			1215	1265			
Sand			1265	1370	water		
Slate			1370	1380			
Sand			1380	1400			
Slate			1400	1455			
Lime			1455	1456			
Slate			1456	1595			
Sand			1595	1648			
Slate			1648	1650			
Sand							
Maxon			1650	1685			
Slate			1685	1725			
little lime			1725	1748			
Slate			1748	1761			
Big Lime		Hard	1761	1830			
Sand Kenner			1830	1842			
Sand Injun			1842	1860	Gas & Oil		
<del>Sand Squaw</del>			1860	1945			
Slate			1945	2131			
Sand							
Gantz & Weir			2131	2245	Oil		
Slate & Shell			2245	2530			
Sand			2530	2541			
Slate			2541	2555			
Sand			2555	2563			
Slate			2563	2606			
Plugged back to 2288							

1761  
925  
836

Gas & Oil

Oil

Date Feb 5, 1967

APPROVED Robert Development Co. Owner

By J. K. Baker agent  
(112)