

Company J. H. WAGNER  
 Address P.O. BOX 751 EL DORADO, KANSAS  
 Farm H.C. WATSON HRS.  
 Tract \_\_\_\_\_ Acres 44.82 Lease No. \_\_\_\_\_  
 Well (Farm) No. 1 Serial No. \_\_\_\_\_  
 Elevation (Spirit Level) 1021  
 Quadrangle WEST UNION WC  
 County TYLER District MEADE  
 Engineer Gordon W. Sammons  
 Engineer's Registration No. 509  
 File No. \_\_\_\_\_ Drawing No. \_\_\_\_\_  
 Date 5-4-1967 Scale 1" = 300'

STATE OF WEST VIRGINIA  
 DEPARTMENT OF MINES  
 OIL AND GAS DIVISION  
 CHARLESTON

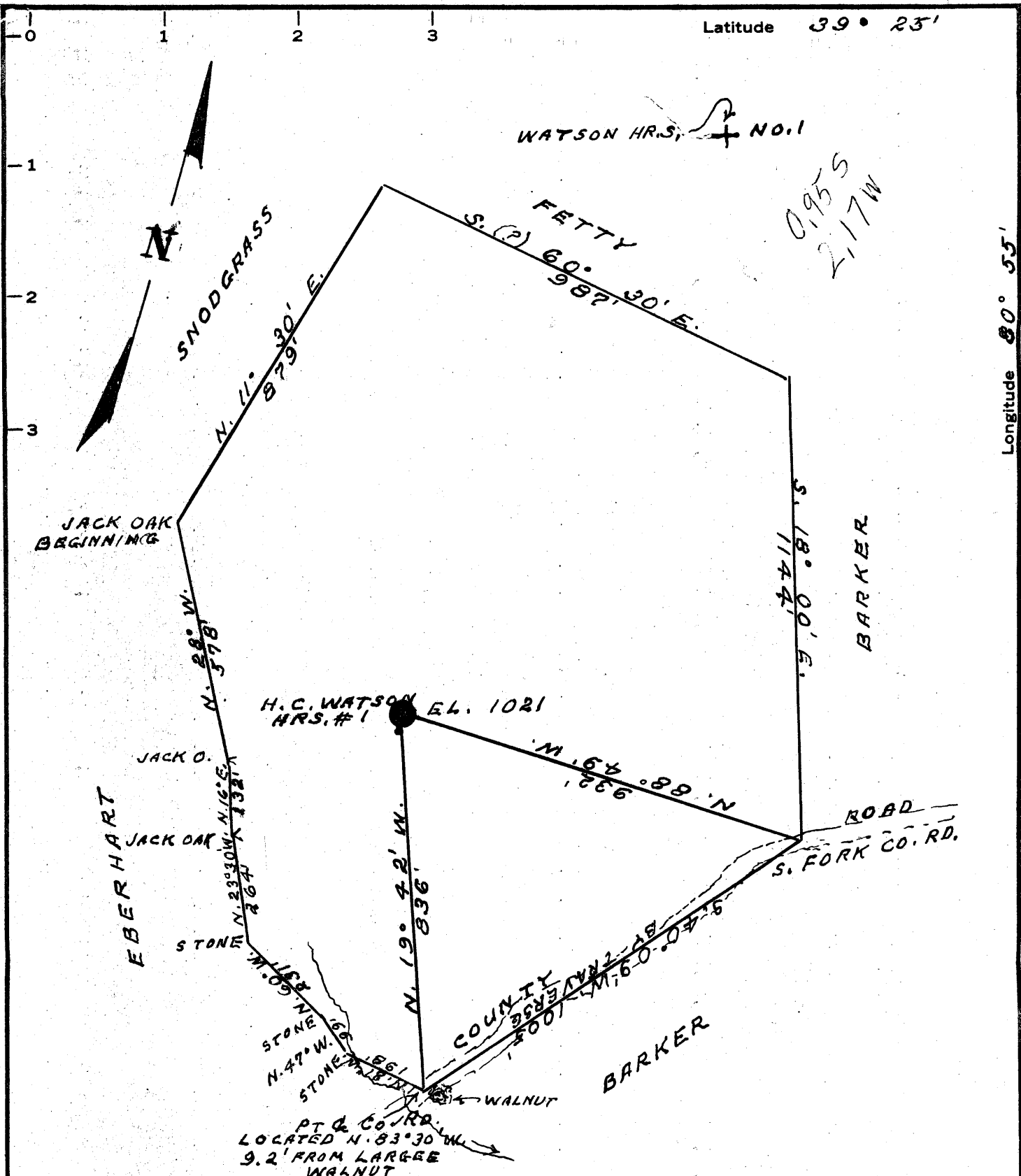
WELL LOCATION MAP  
 FILE NO. TYL-413-P

+ Denotes location of well on United States Topographic Maps, scale 1 to 62,500, latitude and longitude lines being represented by border lines as shown.

- Denotes one inch spaces on border line of original tracing.

Latitude 39° 23'

Longitude 80° 55'



MINIMUM ERROR OF CLOSURE 1:2000

SOURCE OF ELEVATION JCT. OF S. FORK CO. ROAD WITH PAVED ROAD 1/8 MI. EAST OF WICK. - ELEVATION 818

New Location   
 Drill Deeper   
 Abandonment

"I, THE UNDERSIGNED, HEREBY CERTIFY THAT THIS MAP IS CORRECT TO THE BEST OF MY KNOWLEDGE AND BELIEF AND SHOWS ALL THE INFORMATION REQUIRED BY PARAGRAPH 6 OF THE RULES AND REGULATIONS OF THE OIL AND GAS SECTION OF THE MINING LAWS OF WEST VIRGINIA."

Company J. H. WAGNER  
 Address P. O. BOX 751 EL DORADO, KANSAS  
 Farm H. C. WATSON HRS.  
 Tract \_\_\_\_\_ Acres 44.27 Lease No. \_\_\_\_\_  
 Well (Farm) No. 1 Serial No. \_\_\_\_\_  
 Elevation (Spirit Level) 1021  
 Quadrangle WEST UNION WC  
 County TYLER District MEADE  
 Engineer Gordon W. Sammons  
 Engineer's Registration No. 509  
 File No. \_\_\_\_\_ Drawing No. \_\_\_\_\_  
 Date 5-4-1967 Scale 1" = 300'

STATE OF WEST VIRGINIA  
 DEPARTMENT OF MINES  
 OIL AND GAS DIVISION  
 CHARLESTON

WELL LOCATION MAP  
 FILE NO. TYL-413

+ Denotes location of well on United States Topographic Maps, scale 1 to 62,500, latitude and longitude lines being represented by border lines as shown.

— Denotes one inch spaces on border line of original tracing.



STATE OF WEST VIRGINIA  
DEPARTMENT OF MINES  
OIL AND GAS DIVISION

- Rotary
- Spudder
- Cable Tools
- Storage

Quadrangle West Union

Permit No. TYL 413

**WELL RECORD**

Oil or Gas Well Oil  
(KIND)

Company J. H. Wagner  
 Address Box 751, El Dorado, Kansas 67042  
 Farm H. C. Watson Heirs Acres 44.27  
 Location (waters) Sugar Creek  
 Well No. 1 Elev. 1021  
 District Meade County Tyler  
 The surface of tract is owned in fee by Cloyd Watson & Miriam Watson, Cloyd Watson, Attorney in fact 1138 Hickory Rd., Charleston, W. Virginia  
 Mineral rights are owned by V. R. Hadley & Thelma Hadley Address Wick, West Virginia  
 Drilling commenced 5/24/67  
 Drilling completed 6/29/67  
 Date Shot From To  
 With

Casing and Tubing	Used in Drilling	Left in Well	Packers
Size			Kind of Packer
16			
13			
10	225		Size of
8 1/4	1210		
6 3/4	1624		Depth set
<del>XXXXX</del> 4 1/2"	2132	2132	
4 1/2			Perf. top <u>1965</u>
3		2000'	Perf. bottom <u>2050</u>
2			Perf. top
Liners Used			Perf. bottom

Open Flow /10ths Water in \_\_\_\_\_ Inch  
 /10ths Merc. in \_\_\_\_\_ Inch  
 Volume \_\_\_\_\_ Cu. Ft.  
 Rock Pressure \_\_\_\_\_ lbs. \_\_\_\_\_ hrs.  
 Oil \_\_\_\_\_ bbls., 1st 24 hrs.

Attach copy of cementing record.  
 CASING CEMENTED 4 1/2" SIZE 2132 No. Ft. 6/30/67 Date  
 Amount of cement used (bags) 40 sacks  
 Name of Service Co. Halliburton

WELL ACIDIZED (DETAILS) October, 1967: Perforated 10 shots 2004-2006. Acidized w/300 gals. 15% acid.

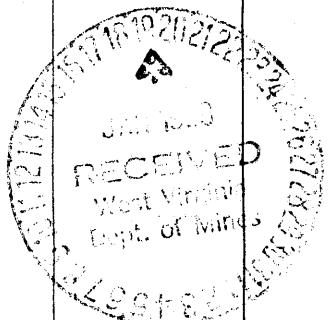
COAL WAS ENCOUNTERED AT \_\_\_\_\_ FEET \_\_\_\_\_ INCHES  
 FEET \_\_\_\_\_ INCHES FEET \_\_\_\_\_ INCHES  
 FEET \_\_\_\_\_ INCHES FEET \_\_\_\_\_ INCHES

WELL FRACTURED (DETAILS) July, 1967: Perforated w/25 from 1964.5' to 2050'. Treated w/800 gallons acid, 40,000# 20/40 sand; 38,640 gallons water.

RESULT AFTER TREATMENT (Initial open Flow or bbls.) 3/4 BOPD and 2.48 BWPD  
 ROCK PRESSURE AFTER TREATMENT \_\_\_\_\_ HOURS  
 Fresh Water 0 Feet Salt Water \_\_\_\_\_ Feet  
 Producing Sand Big Injun Depth 1955

1 Bbl oil

Formation	Color	Hard or Soft	Top	Bottom	Oil, Gas or Water	Depth	Remarks
Clay				16			
Stone				28			
Redrock				36			
Shale				50			
Redrock				56			
Lime				62			
Redrock				73			
Shale & Shells				105			
Redrock				115			
Shale & Shells				150			
Lime				157			
Redrock				172			
Sand				190			
Shale				205			
Redrock				220			
Lime				228			
Shale				245			
Redrock				280			
Shale & Shells				340			
Redrock				348			
Shale & Redrock				360			
Lime				380			
Sand				464			
Shale				476			
Redrock				482			
Shale				496			
Lime & Shale				530			
Shale				537			
Lime				585			
Shale				595			



(over)

JAN 29 1968

Formation	Color	Hard or Soft	Top	Bottom	Oil, Gas or Water	Depth Found	Remarks
Lime				608			
Shale				618			
Lime				636			
Shale				650			
Redrock				672			
Shale & Shells				695			
Shale				710			
Lime				735			
Shale				755			
Sand				780			
Shale & Shells				802			
Lime				820			
Shale & Redrock				875			
Lime				890			
Redrock				905			
Shale				942			
Redrock				958			
Lime				966			
Shale	Black			1006			
Redrock				1014			
Shale				1020			
Redrock				1050			
Lime				1062			
Shale				1082			
Sand				1088			
Shale	Black			1120			
Redrock				1130			
Shale				1150			
Sand				1165			
Shale				1172			
Sand				1187			
Shale				1198			
Redrock				1210			
Lime				1225			
Shale				1245			
Sand				1267			
Shale & Shells				1345			
Sand				1410			
Shale & Shells				1425			
Lime				1450			
Shale	Black			1468			
Lime				1480			
Sand				1505			
Shale				1515			
Sand				1555	Water	1525-50	HFW
Shale				1570			
Lime				1580			
Shale				1595			
Sand				1615			
Shale				1618			
Sand				1628			
Lime				1648			
Shale	Black			1680			
Sandy Shale				1710			
Shale				1717	1865		
Sand				1724	1021		
Shale	Black			1736	244		
Lime				1750			
Sand				1770			
Shale	Black			1845			
Sand				1860			
Shale				1865			
Big Lime				1929			
Shale Break				1930			
Sand				1950			
Shale				1955			Keener
Sand				2065	Oil	2010-23	Big Injun
Sandy Shale				2081			
Sand		Hard		2132			

Date January 15, 19 68 Total Depth

APPROVED J. H. Wagner, Owner  
 By \_\_\_\_\_ (Title)