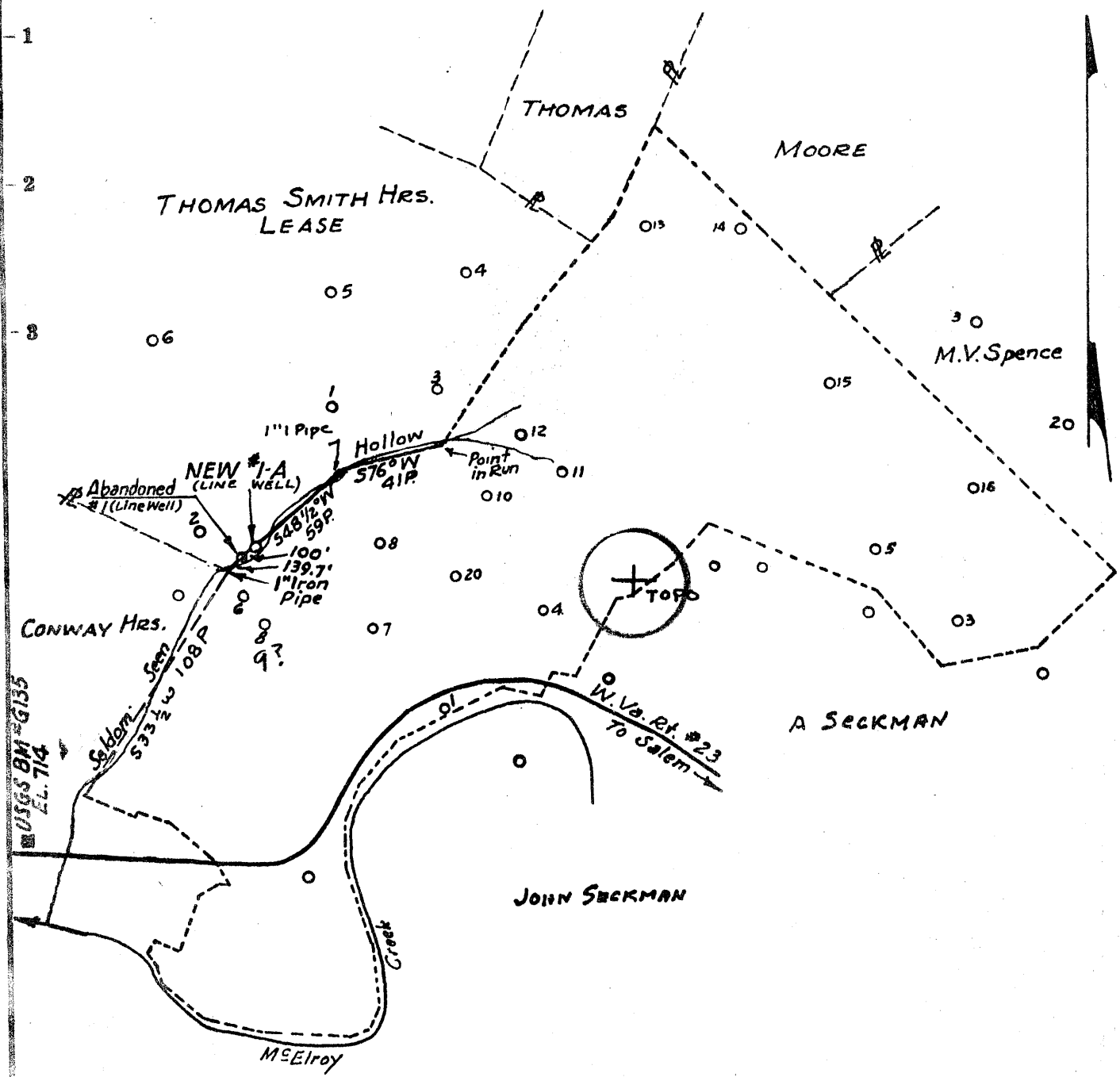


Latitude 39° 30'

4.825

3.51W

Longitude 80° 45'



- Fracture....
- Redrill.....
- New Location.
- Drill Deeper.....
- Abandonment.....

Source of Elevation USGS BM # G135, Elev. 714 as show on plat
 I, the undersigned, hereby certify that this map is correct to the best of my knowledge and belief and shows all the information required by paragraph 6 of the rules and regulations of the oil and gas section of the mining laws of West Virginia.
 Minimum accuracy, one part in

Company QUAKER STATE OIL REFG. CORP.
 Address P.O. Box 1327, Parkersburg, W.Va.
 Farm P. M. FURBEE HRS.
 Tract _____ Acres 316 Lease No. _____
 Well (Farm) No. 1-A (LINE WELL) Serial No. _____
 Elevation (Spirit Level) 789.2 Gr.
 Quadrangle West Union NE
 County Tyler District McElroy
 Surveyor or Engineer Conley L. Marshall 43
 Surveyor's or Engineer's Registration No. 3
 File No. _____ Drawing No. _____
 Date Mar. 13, 1970 Scale 1" = 990

STATE OF WEST VIRGINIA
 DEPARTMENT OF MINES
 OIL AND GAS DIVISION
 CHARLESTON
WELL LOCATION MAP
 FILE NO. TYL-424

+ Denotes location of well on United States Topographic Maps, scale 1 to 62,500, latitude and longitude lines being represented by border lines as shown.
 — Denotes one inch spaces on border line of original tracing.

6-6 Kyle 93

MAR 30 1970



STATE OF WEST VIRGINIA
DEPARTMENT OF MINES
OIL AND GAS WELLS DIVISION 8

Rotary
Spudder
Cable Tools
Storage

Quadrangle West Union

Permit No. TYL - 424

WELL RECORD

Oil or Gas Well Oil (KIND) OIL NO. OIL

Company Quaker State Oil Refining Corporation
Address P. O. Box 1327, Parkersburg, W.Va.
Farm P. M. Furbee Hrs Acres 316
Location (waters)
Well No. 1-A Elev. 789.2
District McElroy County Tyler
The surface of tract is owned in fee by P.M. Furbee Hrs.
% Fred Furbee Address Marietta, Ohio
Mineral rights are owned by Same
Address
Drilling commenced April 14, 1970
Drilling completed May 8, 1970
Date Shot 5-14-70 From 1836 To 1880
With 170 qts

Casing and Tubing	Used in Drilling	Left in Well	Packers
Size			Kind of Packer
16			
13			Size of
10	290	290	Depth set
8 1/4	1036	0	
6 3/4	1694	1690	Perf. top
5 3/16			Perf. bottom
4 1/2			
3			
2			
Liners Used 5 3/16	233	233	

Open Flow /10ths Water in Inch
/10ths Merc. in Inch
Volume Cu. Ft.
Rock Pressure Vacuum lbs. hrs.
Oil Show bbls., 1st 24 hrs.
WELL ACIDIZED (DETAILS) N.A.
WELL FRACTURED (DETAILS) N.A.

Attach copy of cementing record.
CASING CEMENTED 10" SIZE 290 No. Ft. 4-16-70 Date
Amount of cement used (bags) 100
Name of Service Co. Halliburton
COAL WAS ENCOUNTERED AT None FEET INCHES
FEET INCHES FEET INCHES
FEET INCHES FEET INCHES

RESULT AFTER TREATMENT (Initial open Flow or bbls.)
ROCK PRESSURE AFTER TREATMENT Vacuum
Fresh Water None reported Feet
Producing Sand Big Injun

Est.: 7-9 B.O.P.D. A.S. 8 BOPD
HOURS
Salt Water None Reported Feet
Depth 1836 - 1880

Formation	Color	Hard or Soft	Top	Bottom	Oil, Gas or Water	Depth	Remarks
Red Rock			0	10			
Sand			10	20			
Slate			20	40			
Red Rock			40	120			
Slate			120	150			
Red Rock			150	185			
Slate			185	245			
Lime		Hard	245	260			
Red Rock			260	285			
Lime		Hard	285	315			
Red Rock			315	335			
Sand			335	375			
Slate			375	390			
Lime			390	460			
Red Rock			460	470			
Lime			470	500			
Slate			500	540			
Sand			540	570			
Lime		Hard	570	590			
Slate			590	615			
Red Rock			615	625			
Lime			625	640			
Red Rock			640	660			
Slate			660	670			
Sand			670	700			
Red Rock			700	720			
Slate			720	745			
Lime			745	762			
Slate			762	805			

RECEIVED
JUN 30 1970
OIL & GAS DIVISION
DEPT. OF MINES

Formation	Color	Hard or Soft	Top	Bottom	Oil, Gas or Water	Depth Found	Remarks
Red Rock			805	860			
Slate			860	965			
Lime			965	1000			
Sand			1000	1010			
Slate			1010	1040			
Lime			1040	1060			
Sand			1085	1150			
Sand			1150	1175			
Slate			1175	1200			
Slate			1200	1380			
Sand			1380	1400			
Lime			1400	1430			
Slate			1430	1450			
Lime			1450	1465			
Sand			1465	1496			
Slate			1496	1608			
Red Rock			1608	1630			
Slate			1630	1645			
L. Lime		Hard	1645	1659			
Pencil Cave			1659	1670			
Big Lime			1670	1775			
Big Injun			1775	1882			
Sandy Shale			1882	T.D.	OIL Pay	1824-82	
T.D.				1900			

Date June 25, 1910

APPROVED Quaker State Oil Refining Corporation Own

By [Signature]
(Title)