

Minimum Error of Closure 1 in 200'  
 Source of Elevation B.M. at Centerville - 718'

Fracture   
 New Location   
 Drill Deeper   
 Abandonment

I, the undersigned, hereby certify that this map is correct to the best of my knowledge and belief and shows all the information required by paragraph 6 of the rules and regulations of the oil and gas section of the mining laws of West Virginia.

Signed: [Signature]  
 Squares: N S E W

Map No. issued 8-17-70  
 Company Homer L. Ice  
Oil-Gas Development Co.  
 Address 2022-16th St., Parkersburg, W. Va., 26101  
P.O. Box 237, West Union, W. Va.  
 Farm L.H. Ripley  
 Tract 03 Acres 152.87 Lease No. \_\_\_\_\_  
 Well (Farm) No. One Serial No. \_\_\_\_\_  
 Elevation (Spirit Level) 978  
 Quadrangle West Union NC  
 County Tyler District Centerville  
 Engineer [Signature]  
 Engineer's Registration No. 1227  
 File No. \_\_\_\_\_ Drawing No. \_\_\_\_\_  
 Date Sept 30, 1969 Scale 1" = 400' = 660'

STATE OF WEST VIRGINIA  
 DEPARTMENT OF MINES  
 OIL AND GAS DIVISION  
 CHARLESTON

**WELL LOCATION MAP**

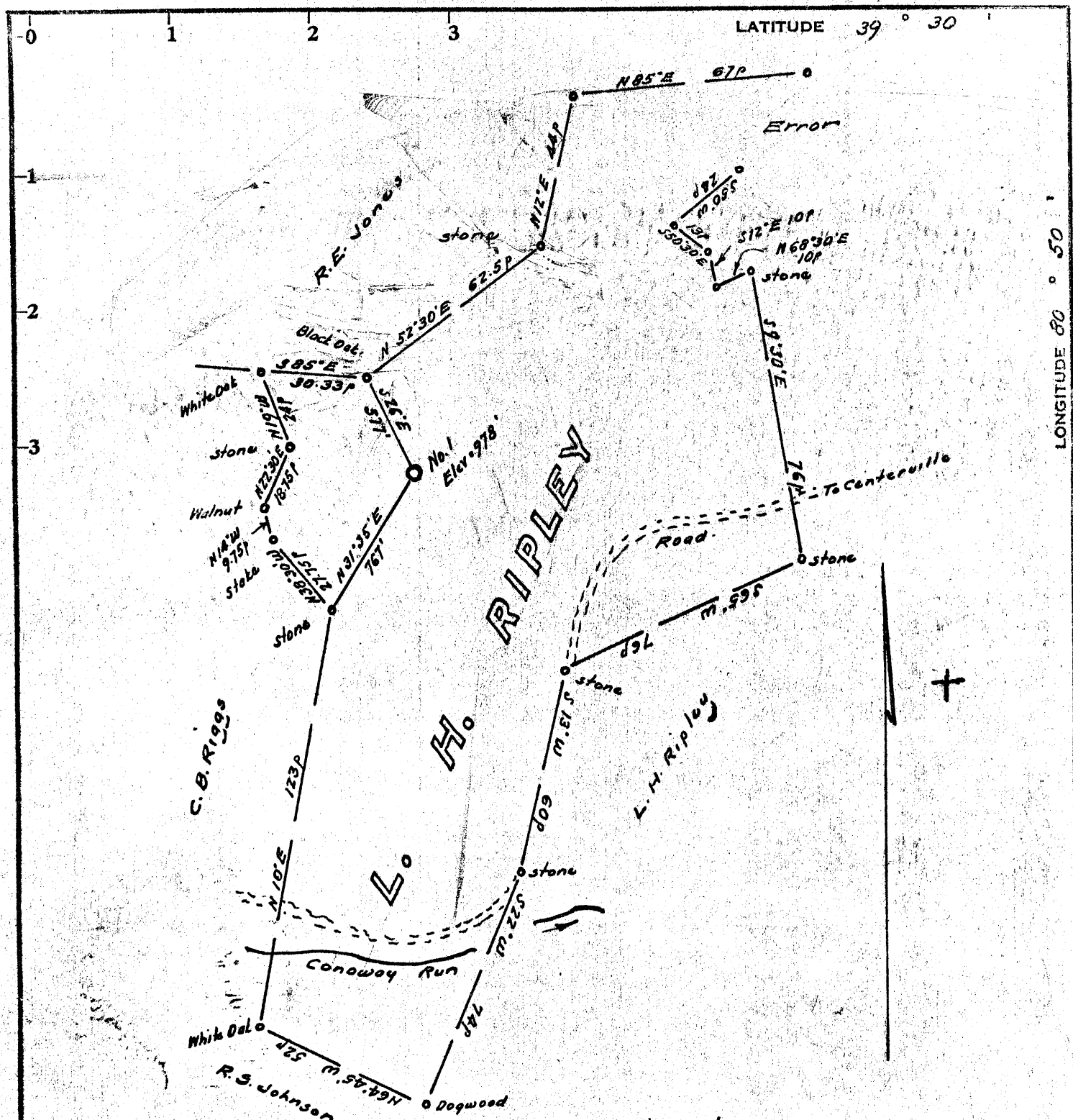
FILE NO. Tyl-426-P  
Formerly Tyl-423

+ Denotes location of well on United States Topographic Maps, scale 1 to 62,500, latitude and longitude lines being represented by border lines as shown.

- Denotes one inch spaces on border line of original tracing.



10/1/69



Minimum Error of Closure 1 in 200'

Source of Elevation B.M. at Centerville - 718'

- Fracture.....
- New Location.....
- Drill Deeper.....
- Abandonment.....

I, the undersigned, hereby certify that this map is correct to the best of my knowledge and belief and shows all the information required by paragraph 6 of the rules and regulations of the oil and gas section of the mining laws of West Virginia.

Signed: [Signature]  
 Map No. \_\_\_\_\_ Squares: N S E W

Company Ole Colony Development Co.  
 Address P.O. Box 237, West Union, W. Va.  
 Farm L.H. Ripley  
 Tract \_\_\_\_\_ Acres 152.87 Lease No. \_\_\_\_\_  
 Well (Farm) No. One Serial No. \_\_\_\_\_  
 Elevation (Spirit Level) 978  
 Quadrangle West Union NC  
 County Tyler District Centerville  
 Engineer [Signature]  
 Engineer's Registration No. 1227  
 File No. \_\_\_\_\_ Drawing No. \_\_\_\_\_  
 Date Sept 30, 1969 Scale 1" = 400' = 660'

STATE OF WEST VIRGINIA  
 DEPARTMENT OF MINES  
 OIL AND GAS DIVISION  
 CHARLESTON

**WELL LOCATION MAP**

FILE NO. Tyl-423  
now: 426

+ Denotes location of well on United States Topographic Maps, scale 1 to 62,500, latitude and longitude lines being represented by border lines as shown.

— Denotes one inch spaces on border line of original tracing.

OCT 13 1969



RECEIVED

AUG 17 1970

STATE OF WEST VIRGINIA  
DEPARTMENT OF MINES  
OIL AND GAS DIVISION

OIL & GAS DIVISION Rotary   
DEPT. OF MINES Spudder

Cable Tools   
Storage

Oil or Gas Well  **DRY**  
(KIND)

Quadrangle West Union

Permit No. TYL-426

WELL RECORD

Company	Address	Farm	Location (waters)	Well No.	District	County	The surface of tract is owned in fee by	Mineral rights are owned by	Drilling commenced	Drilling completed	Date Shot	With	Open Flow	Volume	Rock Pressure	Oil	WELL ACIDIZED (DETAILS)	WELL FRACTURED (DETAILS)	RESULT AFTER TREATMENT (Initial open Flow or bbls.)	ROCK PRESSURE AFTER TREATMENT	Fresh Water	Producing Sand	Casing and Tubing	Used in Drilling	Left in Well	Packers	
Homer L. Ice	2022-16th. St. Parkersburg, WV 26101	L. H. Ripley	Conley Run	One	Centerville	Tyler	L. H. Ripley	L. H. Ripley	June 17, 1970	July 29, 1970			/10ths Water in	None			No	No			210	None	Size	339	339		
							Alma, W. Va.	Alma, W. Va.			From	To	Inch	Cu. Ft.	lbs.	bbls., 1st 24 hrs.				HOURS	Feet	Depth					

Attach copy of cementing record.  
 CASING CEMENTED **10"** SIZE **339** No. Ft. \_\_\_\_\_ Date \_\_\_\_\_  
 Amount of cement used (bags) \_\_\_\_\_  
 Name of Service Co. \_\_\_\_\_  
 COAL WAS ENCOUNTERED AT \_\_\_\_\_ FEET \_\_\_\_\_ INCHES  
 \_\_\_\_\_ FEET \_\_\_\_\_ INCHES FEET \_\_\_\_\_ INCHES  
 \_\_\_\_\_ FEET \_\_\_\_\_ INCHES FEET \_\_\_\_\_ INCHES

Formation	Color	Hard or Soft	Top	Bottom	Oil, Gas or Water	Depth	Remarks
Red Rock			0	25			
Slate			25	60			
Sand			60	95			
Slate	White		95	130			
Red Rock			130	180	Water	130	
Slate			180	215	Water	210	
Red Rock			215	238			
Slate-Lime			238	348			
Red Rock			348	364			
Slate-Lime			364	380			
Red Rock			380	425			
Slate			425	496			
Lime		Hard	496	512			
Red Rock			512	524			
Slate-Lime			524	574			
Sand			574	645			
Slate			645	664			
Red Rock			664	670			
Slate & Shells			670	720			
Lime		Hard	720	734			
Slate			734	785			
Sand			785	795			
Slate & Shells			795	856			
Red Rock			856	874			
Lime			874	880			
Pink Rock			880	960			
Slate-Lime			960	1057			
Red Rock			1057	1080			
Sand			1080	1100			

Formation	Color	Hard or Soft	Top	Bottom	Oil, Gas or Water	Depth Found	Remarks
Lime-Slate			1100	1167			
Sand			1167	1195			
Slate			1195	1215			
Sand			1215	1248			
Slate-Lime			1248	1310			
Sand			1210	1420			
Slate			1420	1452			
Sand			1452	1528			
Slate			1528	1600			
Sand			1600	1650			
Slate			1650	1708			
Sand			1708	1760			
Slate			1760	1827			
Sand			1827	1840			
Red Lime			1840	1845			
Sand - Maxon			1845	1875	Water	1850	
Lime - Little			1875	1899			
Shale			1899	1908			
Slate			1908	1913			
Pencil Cave			1913	1915			
Big Lime			1915	1993			
Keener Sand			1993	2082	Gas	2063	show-quit in 3 hours
Slate			2082	2085			
Injun Sand - Broken			2085	2105			
Shale			2105	2111			
Sand <i>Sig u W</i>			2111	2146			
Shale			2146	2156	TOTAL DEPTH		

Date August 14, 1970

APPROVED Homer L. Ice, Owner

By Homer L. Ice  
(Title)