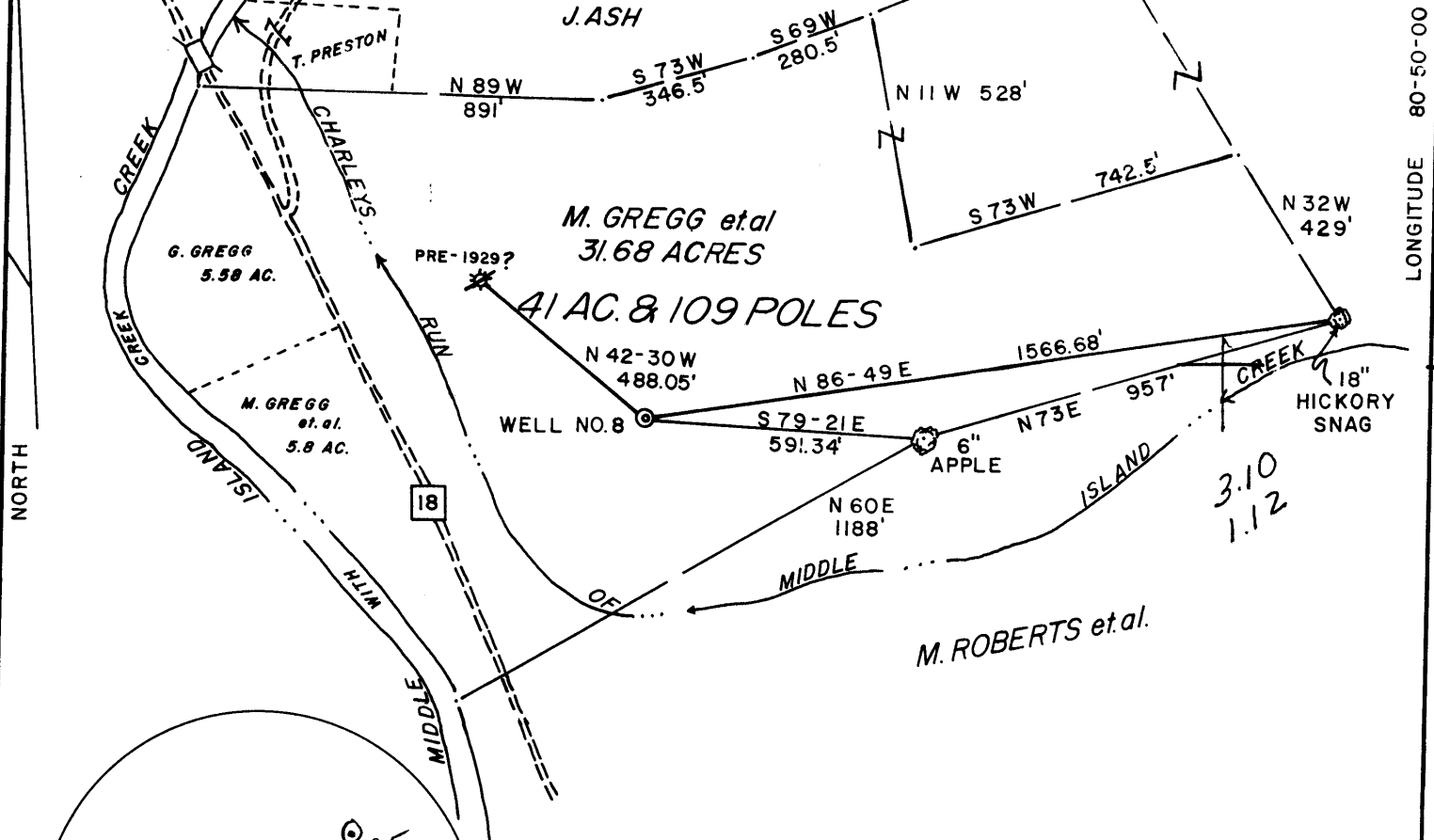


GREGG LEASE WELL NO. 8

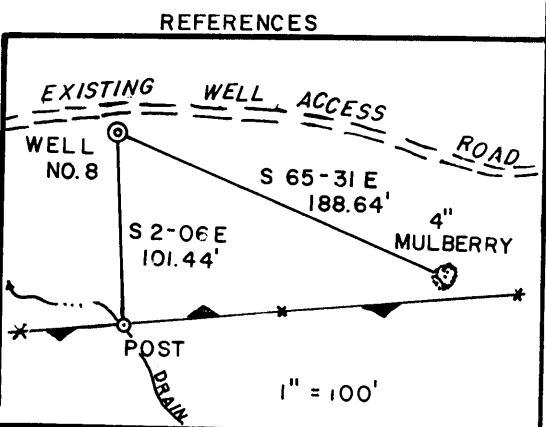
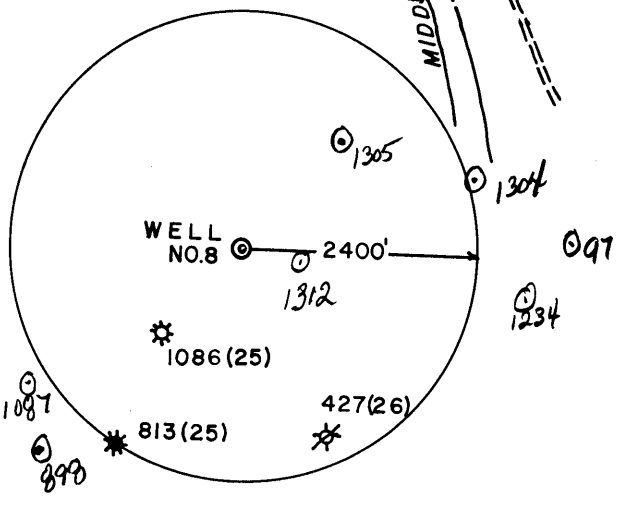
Janie 7/20/89

J. ASH 0.23
1.2

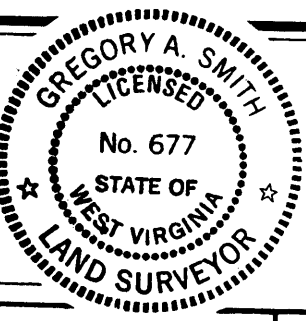


NORTH

LONGITUDE 80-50-00



I THE UNDERSIGNED, HEREBY CERTIFY THAT THIS PLAT IS CORRECT TO THE BEST OF MY KNOWLEDGE AND BELIEF AND SHOWS ALL THE INFORMATION REQUIRED BY LAW AND THE REGULATIONS ISSUED AND PRESCRIBED BY THE DEPARTMENT OF ENERGY.



L.L.S. 677 *Gregory A. Smith*

(+) DENOTES LOCATION OF WELL ON UNITED STATES TOPOGRAPHIC MAPS.
 DATE JULY 12, 19 89
 OPERATORS WELL NO. GREGG NO. 8
 API WELL NO. 47 - 095 - 1317
 STATE COUNTY PERMIT

MINIMUM DEGREE OF ACCURACY 1 / 200 FILE NO. 2113 (27-80)
 PROVEN SOURCE OF ELEVATION BENCH MARK ELEV. 734' SCALE 1" = 400'

STATE OF WEST VIRGINIA
 DEPARTMENT OF ENERGY
 OIL AND GAS DIVISION



WELL TYPE: OIL GAS LIQUID INJECTION WASTE DISPOSAL IF "GAS" PRODUCTION STORAGE DEEP SHALLOW
 LOCATION: ELEVATION 737' WATERSHED CHARLEYS RUN OF MIDDLE ISLAND CREEK +15'c
 DISTRICT CENTERVILLE COUNTY TYLER QUADRANGLE WEST UNION 7.5'671
 SURFACE OWNER MILDRED GREGG et al ACREAGE 31.68 OF 42 133
 ROYALTY OWNER MILDRED GREGG et al LEASE ACREAGE 42 5
 PROPOSED WORK: DRILL CONVERT DRILL DEEPER REDRILL FRACTURE OR STIMULATE PLUG OFF OLD FORMATION PERFORATE NEW FORMATION PLUG AND ABANDON CLEAN OUT AND REPLUG OTHER
 PHYSICAL CHANGE IN WELL (SPECIFY) _____ TARGET FORMATION BENSON
 ESTIMATED DEPTH 5200' 21 1989

WELL OPERATOR THE COASTAL CORP. DESIGNATED AGENT WILLIAM CARPENTER
 ADDRESS P.O. BOX 4119 PARKERSBURG, WV 26101 ADDRESS P.O. BOX 4119 PARKERSBURG, WV 26101

S-75

6-6 Wilbur (1989)

State of West Virginia
DEPARTMENT OF ENERGY
Division of Oil and Gas

Well Operator's Report of Well Work

Farm name: CLARK, SANDRA & DUANE Operator Well No.: GREGG #8

LOCATION: Elevation: 737.00 Quadrangle: WEST UNION

District: CENTERVILLE County: TYLER
Latitude: 1220 Feet South of 39 Deg. 22Min. 30 Sec.
Longitude 5970 Feet West of 80 Deg. 50 Min. 0 Sec.

Company: COASTAL CORP., THE
P. O. BOX 4119
PARKERSBURG, WV 26104-0000

Agent: WILLIAM E. CARPENTER

Inspector: GLEN P. ROBINSON
Permit Issued: 07/21/89
Well work Commenced: 7/25/89
Well work Completed: 8/7/89
Verbal Plugging
Permission granted on: N/A
Rotary Cable Rig
Total Depth (feet) 4867'
Fresh water depths (ft) 190'

Salt water depths (ft) 1250'

Is coal being mined in area (Y/N)? N
Coal Depths (ft): None

Casing & Tubing Size	Used in Drilling	Left in Well	Cement Fill Up Cu. Ft.
11 3/4	120	120	118 cuft
8 5/8	1606	1606	510 cuft
4 1/2	4805	4805	503 cuft

RECEIVED
AUG 14 1989

DIVISION OF OIL & GAS
DEPARTMENT OF ENERGY

OPEN FLOW DATA

Producing formation Benson/Riley Pay zone depth (ft) 4641-4647
 Gas: Initial open flow 1200 MCF/d Oil: Initial open flow 0 Bbl/d
 Final open flow 900 MCF/d Final open flow 0 Bbl/d
 Time of open flow between initial and final tests _____ Hours
 Static rock Pressure 1700 psig (surface pressure) after 24 Hours

Second producing formation _____ Pay zone depth (ft) _____
 Gas: Initial open flow _____ MCF/d Oil: Initial open flow _____ Bbl/d
 Final open flow _____ MCF/d Final open flow _____ Bbl/d
 Time of open flow between initial and final tests _____ Hours
 Static rock Pressure _____ psig (surface pressure) after _____ Hours

NOTE: ON BACK OF THIS FORM PUT THE FOLLOWING: 1). DETAILS OF PERFORATED INTERVALS, FRACTURING OR STIMULATING, PHYSICAL CHANGE, ETC. 2). THE WELL LOG WHICH IS A SYSTEMATIC DETAILED GEOLOGICAL RECORD OF ALL FORMATIONS, INCLUDING COAL ENCOUNTERED BY THE WELLBORE.

AUG 18 1989

For: COASTAL CORP., THE

By: William E. Carpenter
Date: 8/9/89

Gregg #8

1st Stage Benson - Shot 14 .39 holes from 4641' to 4647' and broke down with 500 gals of 15% HCL Acid at 1753 lbs. Ran 50 sacks of 80/100 mesh sand and 350 sacks of 20/40 mesh sand at a rate of 23.3 BPM for a total volumn of 509 bbls. Average treating pressure was 2720 lbs. with and ISIP of 1562 lbs.

2nd Stage Riley - Shot 16 .39 holes from 4001' to 4265' and broke down with 500 gals of 15% HCL Acid at 2339 lbs. Ran 50 sack so 80/100 mesh sand and 250 sack of 20/40 mesh sand at a rate of 24.3 BPM for a total volumn of 412 bbls. Averde treating pressure was 2512 lbs. with and ISIP of 1423 lbs.

RECEIVED
AUG 14 1989

Formation	Color	Hard/Soft	Top	Bottom	DEPARTMENT OF ENERGY
Mud	Brown	Soft	0	20	
Rock	White	Hard	20	137	
Sand	LGray	Med	137	190	Water 190
Shale	Gray	Med	190	476	
Sandy Shale	Gray	Med	476	790	
Sand	White	Hard	790	885	
Sand	White	Hard	885	1555	
B Lime	White	Hard	1555	1647	
Lime	White	Hard	1647	1700	
Sandy Shale	Gray	Med	1700	1900	
Sandy Shale	Gray	Med	1900	2450	
Shale	Gray	Soft	2450	2520	
Shale	Gray	Soft	2520	4859 TD	

AUG 18 1989

1776

4859 TD