

#65

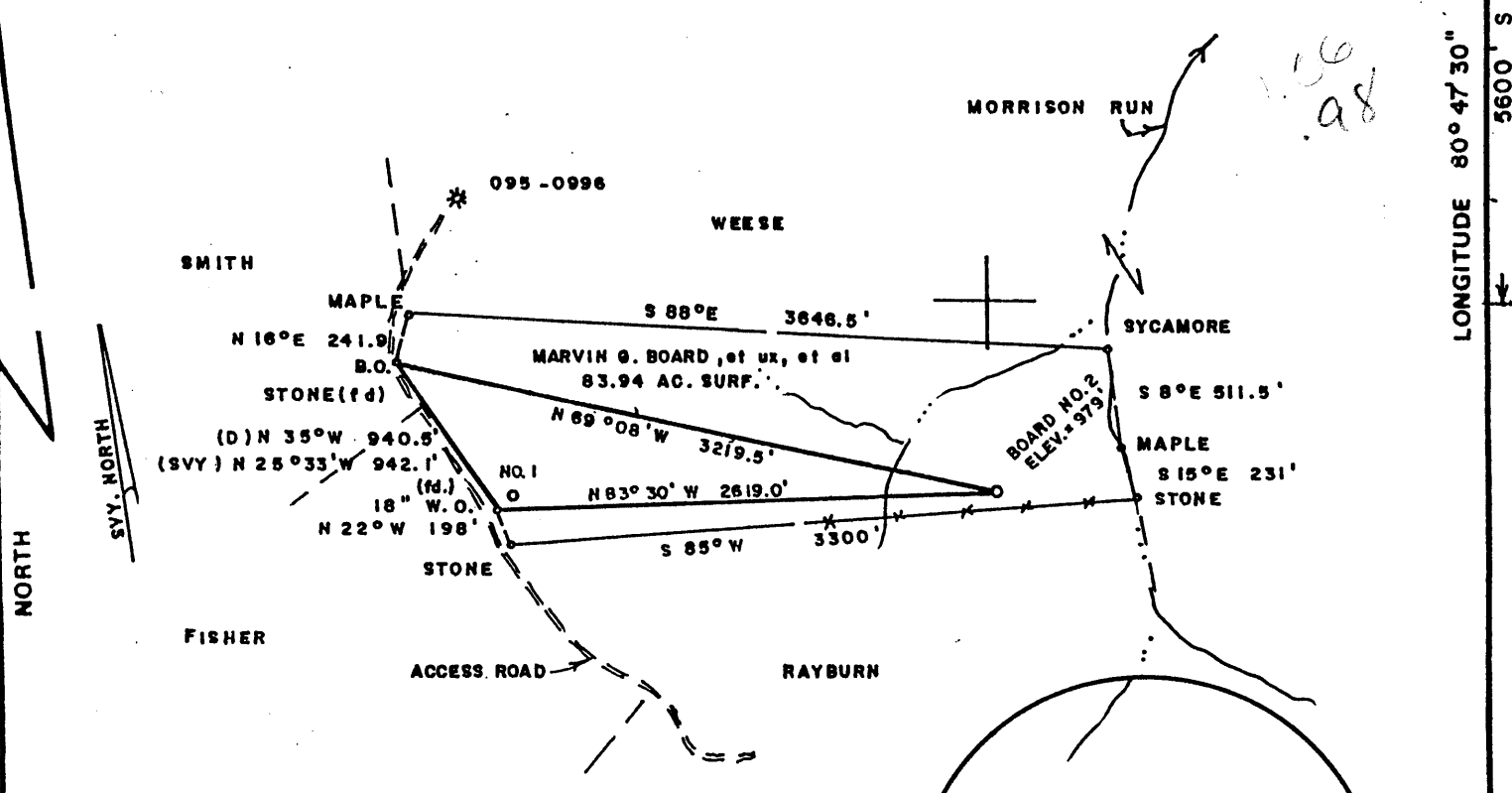
5200' W

LATITUDE 39°25'00"

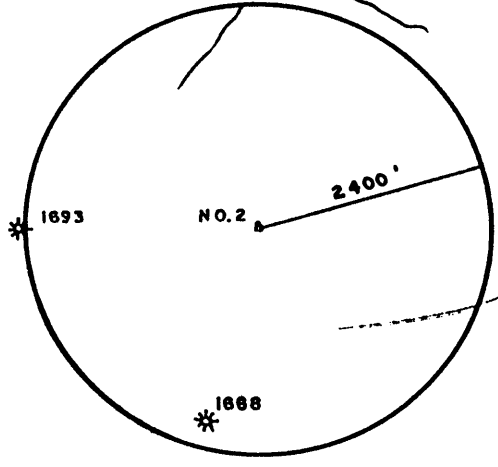
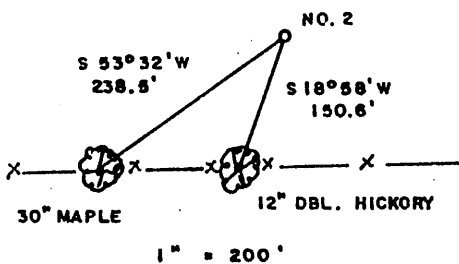
BOARD LEASE 83.94 AC. ±

LONGITUDE 80°47'30" 5600' S

116
as



WELL REFERENCES



FILE NO. _____
 DRAWING NO. _____
 SCALE 1" = 1000'
 MINIMUM DEGREE OF ACCURACY 1/200
 PROVEN SOURCE OF ELEVATION TOP OF KNOB SW CORNER OF LEASE ELEV. = 1125'

I THE UNDERSIGNED, HEREBY CERTIFY THAT THIS PLAT IS CORRECT TO THE BEST OF MY KNOWLEDGE AND BELIEF AND SHOWS ALL THE INFORMATION REQUIRED BY LAW AND THE REGULATIONS ISSUED AND PRESCRIBED BY THE DEPARTMENT OF MINES.
Mark C. Echard
 (SIGNED) MARK C. ECHARD
 R.P.E. _____ L.L.S. 490



(+) DENOTES LOCATION OF WELL ON UNITED STATES TOPOGRAPHIC MAPS
 FORM IV-6 (8-78)



DATE MAY 22, 2001
 OPERATOR'S WELL NO. BOARD NO. 2
 API WELL NO.
 47 - 095 - 01711
 STATE COUNTY PERMIT

STATE OF WEST VIRGINIA
 DEPARTMENT OF MINES
 OIL AND GAS DIVISION

WELL TYPE: OIL ___ GAS LIQUID INJECTION ___ WASTE DISPOSAL ___
 (IF "GAS.") PRODUCTION STORAGE ___ DEEP ___ SHALLOW
 LOCATION: ELEVATION 979' WATER SHED MORRISON RUN
 DISTRICT McELROY COUNTY TYLER
 QUADRANGLE SHIRLEY 7.5'
 SURFACE OWNER MARVIN G. BOARD, et ux, et al ACREAGE 83.94
 OIL & GAS ROYALTY OWNER MARVIN G. BOARD, et ux, et al LEASE ACREAGE 83.94
 LEASE NO. _____
 PROPOSED WORK: DRILL CONVERT ___ DRILL DEEPER ___ REDRILL ___ FRACTURE OR STIMULATE PLUG OFF OLD FORMATION ___ PERFORATE NEW FORMATION ___ OTHER PHYSICAL CHANGE IN WELL (SPECIFY) _____
 PLUG AND ABANDON ___ CLEAN OUT AND REPLUG ___
 TARGET FORMATION GORDON / BIG INJUN ESTIMATED DEPTH 3900'
 WELL OPERATOR D.A.C. DESIGNATED AGENT KENNETH MASON 6-6 92
 ADDRESS P.O. BOX 99 ADDRESS P.O. BOX 99
 ALMA, WV 26320 ALMA, WV 26320

BIAS BLUEPRINT Huntington, W.V. 579536

TYL 11/1

JUN 08 2001

6-8
 102 17

State of West Virginia
 Division of Environmental Protection
 Section of Oil and Gas

Well Operators Report of Well Work

Farm name: Board Operator Well #: Board #2
 Location: Elevation: 979 Quadrangle: Shirley
 District: McElroy County Tyler
 Latitude 5,600 feet south of 39 Deg. 25 Min. 00 Sec.
 Longitude 5,200 feet west of 80 Deg. 47 Min. 30 Sec.
 Company: Drilling Appalachian Corporation
 P.O. Box 99
 Alma WV 26320

Agent:	Kenneth Mason	Casing	Used in Drilling	Left in Well	Cement Fill up
Inspector:	Mike Underwood				
Permit Issued:	06-08-01	113/4	225	200	100sks
Well Work Commenced:	06-18-01				
Well Work Completed:	06-24-01	8 5/8	1900	1327	315 sks
Verbal Plugging					
Permission granted on:		4 1/2	2956	2838	290 sks
Rotary	Cable	Rig			
Total Depth (ft)	2956'				
Fresh water depth (ft)	1153'				
Salt water depth (ft)	N/A				
Is coal being mined in are (Y/N)	N				
Coal depths (ft)	1270-74				

RECEIVED
 Office of Oil & Gas
 Permitting
 JUL 30 2001
 WV Department of
 Environmental Protection
 2622-2638

OPEN FLOW DATA

Producing formation	Gordon	Pay zone depths (ft)	
Gas: Initial open flow	show mcf/d	Oil: Initial open flow	bbls/day
Final open flow	189 show mcf/d	Final open flow	bbls/day
Time of open flow between initial and final tests			48 Hours
Static rock pressure	50# psig (surface pressure)	after	48 Hours
Other producing formation	Big Injun	Pay zone depths (ft)	1996-2054
Gas: Initial open flow	* mcf/day	Oil: Initial open flow	bbls/day
Final open flow	* mcf/day	Final open flow	bbls/day
Time of open flow between initial and final tests			48 Hours
Static rock pressure	psig (surface pressure)	after	48 Hours

* = comminled zones

For: Drilling Appalachian Corporation

By: Kenneth H. Mason
 Date: 07-10-01

AUG 03 2001

TYL 1711

Board #2
07-03-01

Stage #1	perfs	sand	avg rate	isip
Gordon	2710-2768	300 sks	36 bpmr	2700#
Stage #2				
Big Injun	2000-2050	300 sks	36 bpm	2229#

Drillers Log

Sh	0	20
Sd	20	75
Sd/Sh	75	1240
RR	1240	1270
Coal	1270	1274
Sd/Sh	1274	1611
Sd	1611	1652
Sd/Sh	1652	1800
Sh	1800	1817
Ll	1817	1829
Sh	1829	1858
Bl	1858	1930
Sd	1930	2115
Sh	2115	2270
Sd	2270	2290
Sh	2290	2685
Sd	2685	2705
Sh	2705	2956
Td	2956	

Electric Log Tops

Big Lime	1854
Berea	2456
Gordon	2658