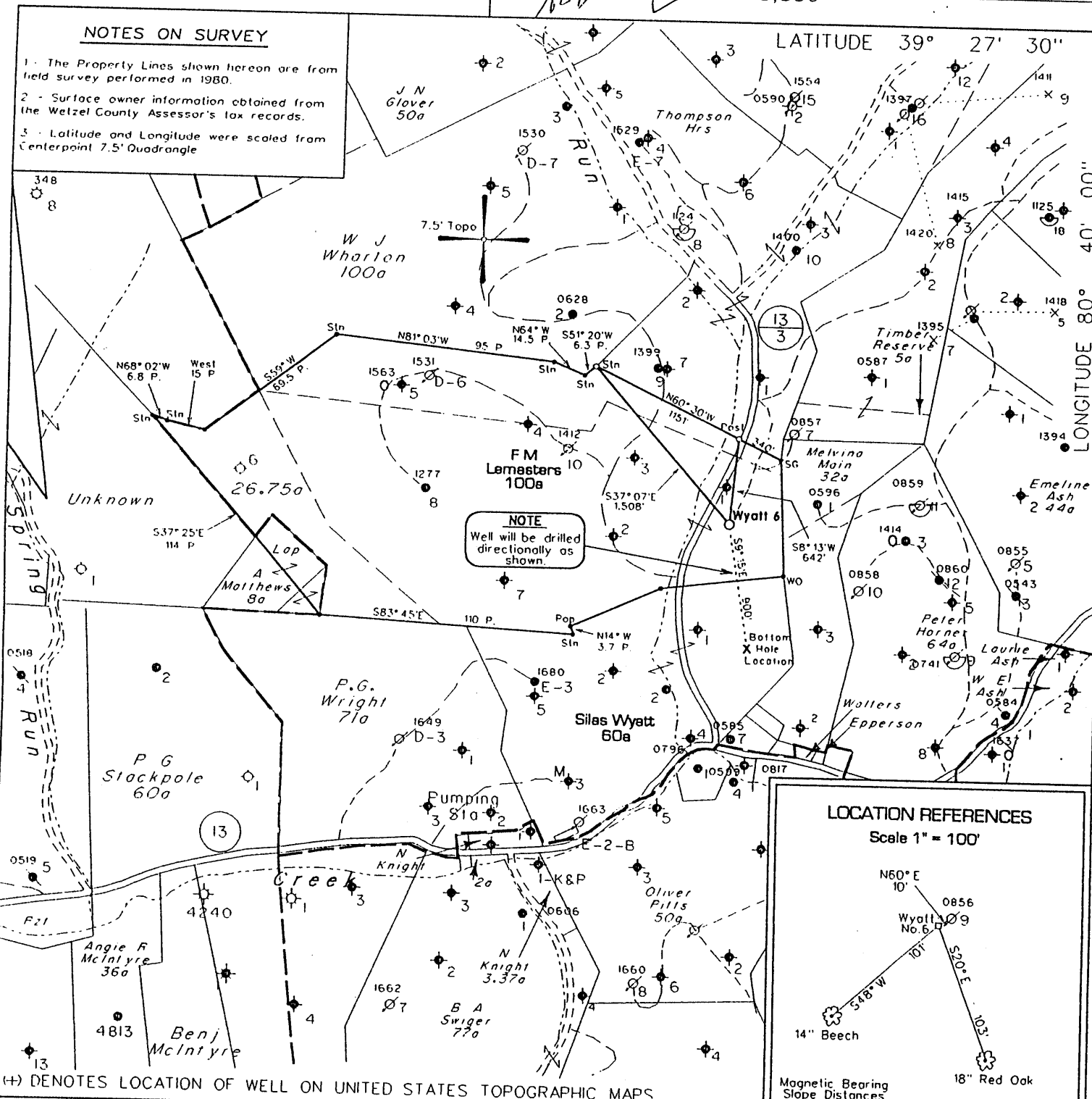
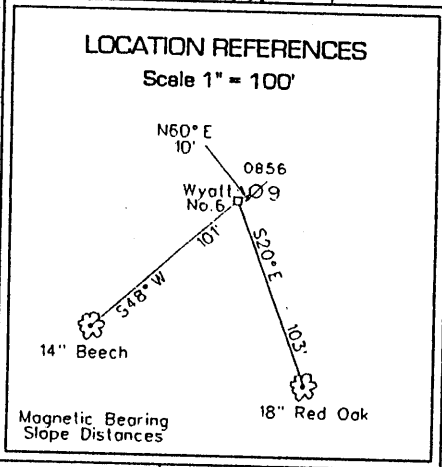


NOTES ON SURVEY

- 1 - The Property Lines shown hereon are from field survey performed in 1980.
- 2 - Surface owner information obtained from the Wetzel County Assessor's tax records.
- 3 - Latitude and Longitude were scaled from Centerpoint 7.5' Quadrangle



NOTE Well will be drilled directionally as shown.

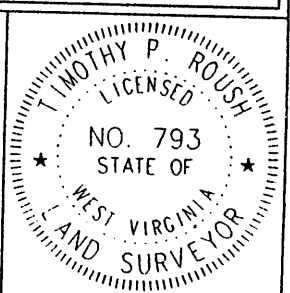


(H) DENOTES LOCATION OF WELL ON UNITED STATES TOPOGRAPHIC MAPS

FILE NO. 1038-25
 MAP NO. N47 N S 2 E W 5
 SCALE 1" = 1000'
 MINIMUM DEGREE OF ACCURACY 1 in 200
 PROVEN SOURCE OF ELEVATION F.M. Lemasters No. 9
 47-095-0856

I THE UNDERSIGNED, HEREBY CERTIFY THAT THIS PLAT IS CORRECT TO THE BEST OF MY KNOWLEDGE AND BELIEF AND SHOWS ALL THE INFORMATION REQUIRED BY LAW AND THE REGULATIONS ISSUED AND PRESCRIBED BY THE DEPARTMENT OF MINES.

(SIGNED) *Timothy P. Roush*
 TIMOTHY P. ROUSH PS 793



WEST VIRGINIA
 Division of Environmental Protection
 Office of Oil and Gas
 1356 Hansford St.
 Charleston, West Virginia 25301



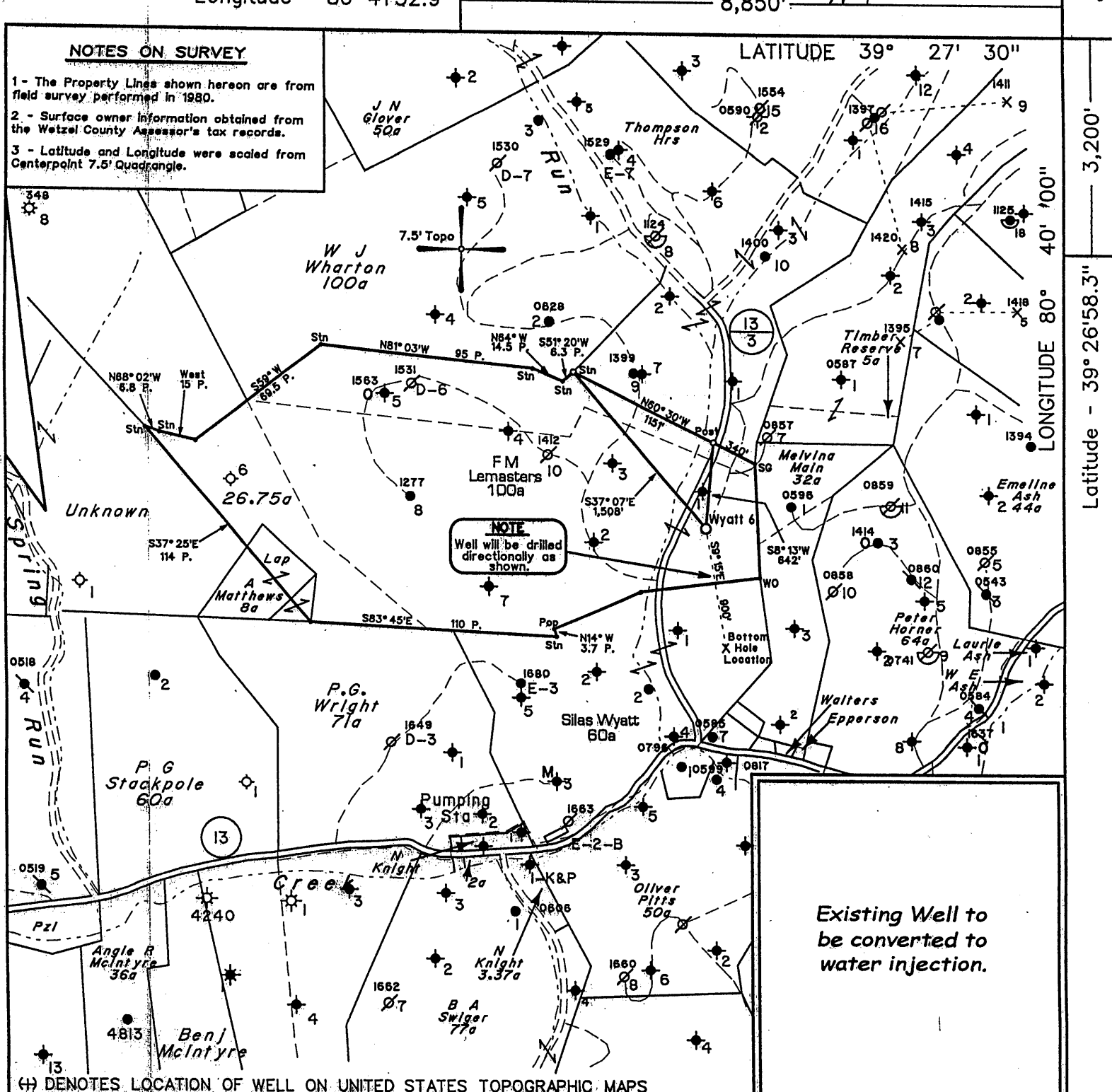
DATE June 4, 2003
 FARM Silas Wyatt NO. 6
 API WELL NO. 47-095-01748

WELL TYPE: OIL GAS LIQUID INJECTION WASTE DISPOSAL
 (IF "GAS") PRODUCTION STORAGE DEEP SHALLOW
 LOCATION: ELEVATION 913' WATERSHED Stackpole Run
 DISTRICT McElroy COUNTY Tyler
 QUADRANGLE Centerpoint 7.5'
 SURFACE OWNER Yvonne Wadsworth et al. ACREAGE 152 Ac.
 OIL & GAS ROYALTY OWNER East Resources, Inc. et al. LEASE ACREAGE 60 Ac.
 LEASE NO. 47495-00
 PROPOSED WORK: DRILL CONVERT DRILL DEEPER REDRILL FRACTURE OR STIMULATE PLUG OFF OLD FORMATION PERFORATE NEW FORMATION OTHER PHYSICAL CHANGE IN WELL (SPECIFY) _____
 PLUG AND ABANDON CLEAN OUT AND REPLUG
 TARGET FORMATION Gordon ESTIMATED DEPTH 3,100' M.D.
 WELL OPERATOR East Resources, Inc. DESIGNATED AGENT Michael McCown
 ADDRESS P. O. Box 5519 ADDRESS P. O. Box 5519
 Vienna, W.Va. 26105 6-6 Jacksonburg - Vienna, W.Va. 26105
 Stringer (95)

BALL 7KI

NOTES ON SURVEY

- 1 - The Property Lines shown hereon are from field survey performed in 1980.
- 2 - Surface owner information obtained from the Wetzel County Assessor's tax records.
- 3 - Latitude and Longitude were scaled from Centerpoint 7.5' Quadrangle.



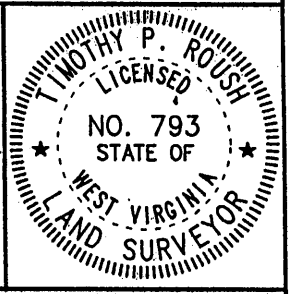
NOTE
Well will be drilled directionally as shown.

Existing Well to be converted to water injection.

FILE NO. 1038-25
 MAP NO. N47° N S 2 E W 5
 SCALE 1" = 1000'
 MINIMUM DEGREE OF ACCURACY 1 in 200
 PROVEN SOURCE OF ELEVATION F.M. Lemasters No.9
 47-095-0856

I THE UNDERSIGNED, HEREBY CERTIFY THAT THIS PLAT IS CORRECT TO THE BEST OF MY KNOWLEDGE AND BELIEF AND SHOWS ALL THE INFORMATION REQUIRED BY LAW AND THE REGULATIONS ISSUED AND PRESCRIBED BY THE DEPARTMENT OF MINES.

(SIGNED) *Timothy P. Roush*
 TIMOTHY P. ROUSH PS 793



WEST VIRGINIA
 Division of Environmental Protection
 Office of Oil and Gas
 1356 Hansford St.
 Charleston, West Virginia 25301



DATE August 27, 2004
 FARM Silas Wyatt NO. 6
 API WELL NO. 47-095-1748-S

WELL TYPE: OIL ___ GAS ___ LIQUID INJECTION WASTE DISPOSAL ___
 (IF "GAS") PRODUCTION ___ STORAGE ___ DEEP ___ SHALLOW ___
 LOCATION: ELEVATION 913' WATERSHED Stackpole Run
 DISTRICT McElroy COUNTY Tyler
 QUADRANGLE Centerpoint 7.5'

SURFACE OWNER Yvonne Wadsworth et al. ACREAGE 152 Ac.
 OIL & GAS ROYALTY OWNER East Resources, Inc. et al. LEASE ACREAGE 60 Ac.
 LEASE NO. 47495-00

PROPOSED WORK: DRILL ___ CONVERT DRILL DEEPER ___ REDRILL ___ FRACTURE OR STIMULATE ___ PLUG OFF OLD FORMATION ___ PERFORATE NEW FORMATION ___ OTHER PHYSICAL CHANGE IN WELL (SPECIFY) Convert producing well to water injection well.

PLUG AND ABANDON ___ CLEAN OUT AND REPLUG ___
 TARGET FORMATION Gordon ESTIMATED DEPTH 3,020' M.D.
 WELL OPERATOR East Resources, Inc. DESIGNATED AGENT Phillip S. Ondrusek
 ADDRESS P. O. Box 5519 ADDRESS P. O. Box 5519
 Vienna, W.Va. 26105 Vienna, W.Va. 26105

J-O Jacksonburg Stringtown (45)

Latitude - 39° 26'58.3"

3,200'

PUM IV-B

State of West Virginia
Division of Environmental Protection
Section of Oil and Gas

Mr

Well Operator's Report of Well Work

Farm name: WADSWORTH, YVONNE

Operator Well No.: WYATT 6

LOCATION: Elevation: 913.00

Quadrangle: CENTERPOINT 7.5'

District: MCELROY

County: TYLER

Latitude: 3,200 Feet south of 39 Deg 27 Min 30 Sec.

Longitude: 8,850 Feet west of 80 Deg 40 Min 00 Sec.

Company: EAST RESOURCES, INC.
P.O. BOX 5519
VIENNA, WV 26105-5519

Agent: PHILIP S. ONDRUSEK

Inspector: MIKE UNDERWOOD

Permit Issued: 06/23/03

Well work Commenced: 03/24/04

Well work Completed: 04/24/04

Verbal plugging

permission granted on:

Rotary X Cable _____ Rig _____

Total Depth (feet) 3020

Fresh water depths (ft) NA

Salt water depths (ft) NA

NA

Is coal being mined in area (Y/N) N

Coal Depths (ft): NA

Casing & Tubing Size	Used in Drilling	Left in Well	Cement Fill Up Cu. Ft.
8 5/8"	394.00'	394.00'	200 sks
4 1/2"	2986.50'	2986.50'	300 sks

RECEIVED
Office of Oil & Gas
Office of Chief
MAY 20 2004
WV Department of
Environmental Protection

OPEN FLOW DATA

Waterflood producer

This well was directionally drilled with bottom hole location 707' S and 100' E of surface location

Producing formation Gordon Pay zone depth (ft) 2962-2974

Gas: Initial open flow * MCF/d Oil: Initial open flow * Bbl/d

Final open flow * MCF/d Final open flow * Bbl/d

Time of open flow between initial and final tests * Hours

Static rock pressure * psig (surface pressure) after Hours

Second producing formation Pay zone depth (ft)

Gas: Initial open flow MCF/d Oil: Initial open flow Bbl/d

Final open flow MCF/d Final open flow Bbl/d

Time of open flow between initial and final tests Hours

Static rock pressure psig (surface pressure) after Hours

NOTE: ON BACK OF THIS FORM, PUT THE FOLLOWING: 1) DETAILS OF PERFORATED INTERVALS, FRACTURING OR STIMULATING, PHYSICAL CHANGE, ETC. 2) THE WELL LOG WHICH IS A SYSTEMATIC DETAILED GEOLOGICAL RECORD OF ALL FORMATIONS, INCLUDING COAL ENCOUNTERED BY THE WELLBORE.

For: EAST RESOURCES, INC.

By: *Bob Redden*

Date: 5/19/04

TYL 1748

JUN 18 2004

Treatment : SEE ORIGINAL RECORD
NO ADDITIONAL STIMULATION

Well Log : SEE ORIGINAL RECORD

JAN 12 2007

State of West Virginia
Division of Environmental Protection
Section of Oil and Gas

Well Operator's Report of Well Work

Farm name: WADSWORTH, YVONNE Operator Well No.: WYATT 6

LOCATION: Elevation: 913.00 Quadrangle: CENTERPOINT 7.5

District: MCELROY County: TYLER
Latitude: 3,200 Feet south of 39 Deg 27 Min 30 Sec.
Longitude: 8,850 Feet west of 80 Deg 40 Min 00 Sec.

Company: EAST RESOURCES, INC.
P.O. BOX 5519
VIENNA, WV 26105-5519

Agent: PHILIP S. ONDRUSEK

Inspector: MIKE UNDERWOOD
Permit Issued: 06/23/03
Well work Commenced: 03/24/04
Well work Completed: 04/24/04

Verbal plugging permission granted on:
Rotary X Cable _____ Rig _____
Total Depth (feet) 3,020
Fresh water depths (ft) NA

Salt water depths (ft) NA

Is coal being mined in area (Y/N) N
Coal Depths (ft): NA

Casing & Tubing Size	Used in Drilling	Left in Well	Cement Fill Up Cu. Ft.
8 5/8"	394.00'	394.00'	200 sks
4 1/2"	2986.50'	2986.50'	300 sks

OPEN FLOW DATA * WATER INJECTION WELL - CONVERTED FROM PRODUCER

Producing formation Gordon Pay zone depth (ft) 2962'-2974'
 Gas: Initial open flow * MCF/d Oil: Initial open flow * Bbl/d
 Final open flow * MCF/d Final open flow * Bbl/d
 Time of open flow between initial and final tests _____ Hours
 Static rock pressure _____ psig (surface pressure) after _____ Hours

Second producing formation _____ Pay zone depth (ft) _____
 Gas: Initial open flow _____ MCF/d Oil: Initial open flow _____ Bbl/d
 Final open flow _____ MCF/d Final open flow _____ Bbl/d
 Time of open flow between initial and final tests _____ Hours
 Static rock pressure _____ psig (surface pressure) after _____ Hours

NOTE: ON BACK OF THIS FORM, PUT THE FOLLOWING: 1) DETAILS OF PERFORATED INTERVALS, FRACTURING OR STIMULATING, PHYSICAL CHANGE, ETC. 2) THE WELL LOG WHICH IS A SYSTEMATIC DETAILED GEOLOGICAL RECORD OF ALL FORMATIONS, INCLUDING COAL ENCOUNTERED BY THE WELLBORE.

For: EAST RESOURCES, INC.

By: [Signature]
Date: 12/5/06

JAN 12 2007

RECEIVED
Office of Oil & Gas
Office of Chief
DEC 06 2006
WV Department of
Environmental Protection

7/1 174

Treatment :

Treated perforations 2964'-2974' w/ 250 gals 15% HCL, 325 Bbls cross linked gel and 20,000 # 20/40 sand

Well Log :

0	574	Sand and Shale
574	621	Sand
621	810	Shale
810	838	Sand
838	1132	Shale
1132	1208	Sand
1208	1234	Shale
1234	1258	Sand
1258	1440	Shale
1440	1498	Sand
1498	1616	Shale
1616	1698	Sand
1698	1862	Shale
1862	1885	Sand
1885	1964	Shale
1964	1992	Sand
1992	2106	Shale
2106	2144	Sand
2144	2212	Big Lime
2212	2364	Big Injun
2364	2938	Shale
2938	2957	Gordon Stray
2957	2975	Gordon
2975	3020	Shale