

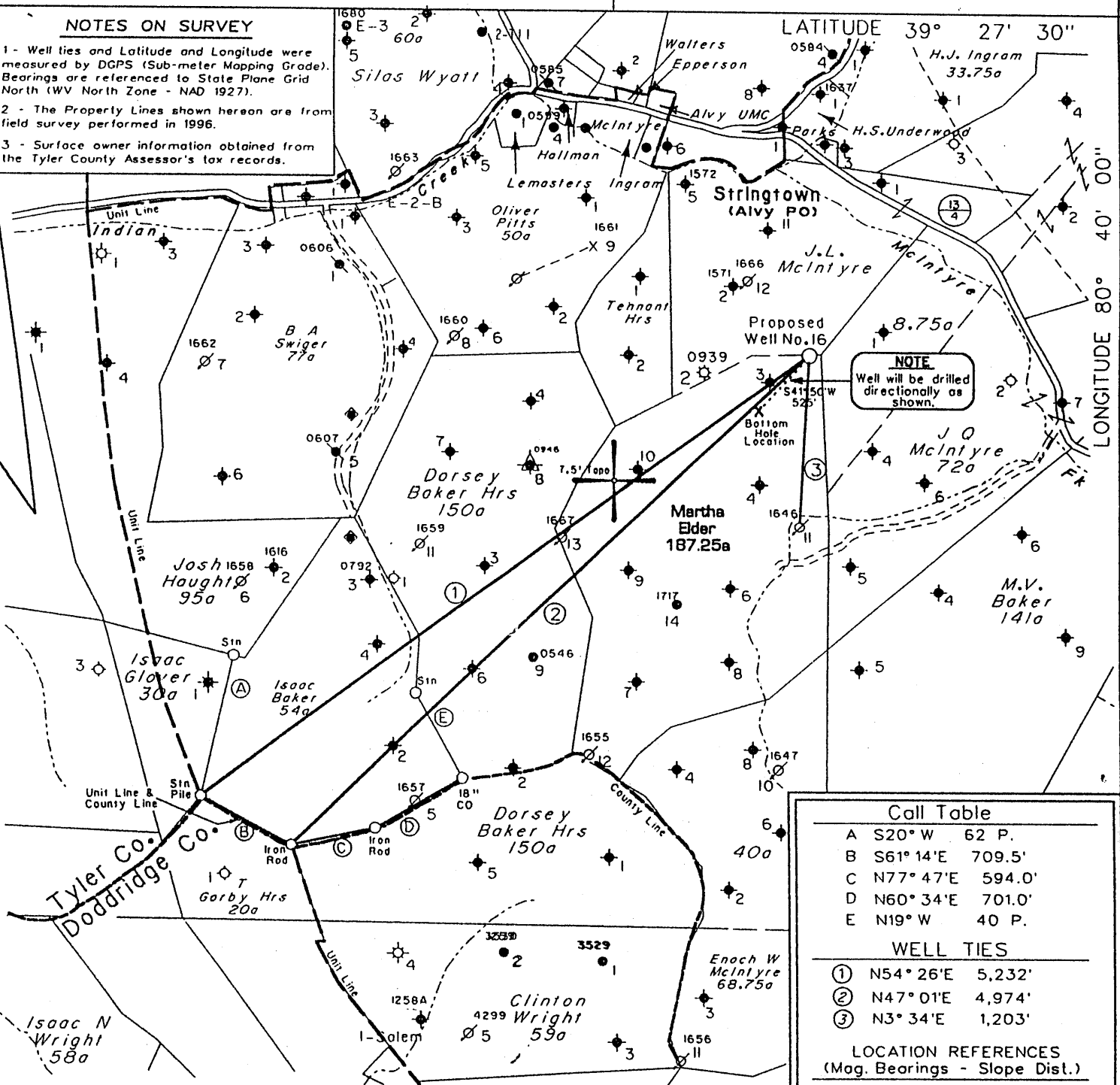
Longitude - 80° 41' 29.4"

7,000'

NOTES ON SURVEY

- 1 - Well lies and Latitude and Longitude were measured by DGPS (Sub-meter Mapping Grade). Bearings are referenced to State Plane Grid North (WV North Zone - NAD 1927).
- 2 - The Property Lines shown hereon are from field survey performed in 1996.
- 3 - Surface owner information obtained from the Tyler County Assessor's tax records.

LATITUDE 39° 27' 30"



LONGITUDE 80° 40' 00"

Latitude - 39° 26' 24.3"

Tyler 1763-5

NOTE: Well will be drilled directionally as shown.

Call Table

- A S20° W 62 P.
- B S61° 14' E 709.5'
- C N77° 47' E 594.0'
- D N60° 34' E 701.0'
- E N19° W 40 P.

WELL TIES

- ① N54° 26' E 5,232'
- ② N47° 01' E 4,974'
- ③ N3° 34' E 1,203'

LOCATION REFERENCES (Mag. Bearings - Slope Dist.)

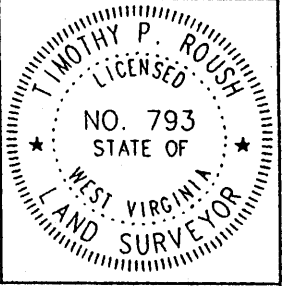
- N83° W 129' 8" Maple
- S33° E 115' 4" Sourwood

NOTE: - NO KNOWN WATER SUPPLY SOURCES ARE LOCATED WITHIN 1000' OF PROPOSED WELL. (+) DENOTES LOCATION OF WELL ON UNITED STATES TOPOGRAPHIC MAPS

FILE NO. 1038-68
 MAP NO. N47 N S 1 E W 4
 SCALE 1" = 1000'
 MINIMUM DEGREE OF ACCURACY 1 in 200
 PROVEN SOURCE OF ELEVATION DGPS Survey (Post-Processed Sub-Meter Mapping Grade)

I THE UNDERSIGNED, HEREBY CERTIFY THAT THIS PLAT IS CORRECT TO THE BEST OF MY KNOWLEDGE AND BELIEF AND SHOWS ALL THE INFORMATION REQUIRED BY LAW AND THE REGULATIONS ISSUED AND PRESCRIBED BY THE DEPARTMENT OF MINES

(SIGNED) [Signature]
 TIMOTHY P. ROUSH PS 793



WEST VIRGINIA

Division of Environmental Protection
 Office of Oil and Gas
 1356 Hansford St.
 Charleston, West Virginia 25301



DATE January 19, 2004
 FARM Martha Elder NO. 16
 API WELL NO. 47-095-01763-5

WELL TYPE: OIL GAS LIQUID INJECTION X WASTE DISPOSAL
 (IF "GAS") PRODUCTION STORAGE DEEP SHALLOW
 LOCATION: ELEVATION 1,159' WATERSHED McIntyre Fork
 DISTRICT McElroy COUNTY Tyler
 QUADRANGLE Centerpoint 7.5'

SURFACE OWNER Ray F. Glover Jr. et al. ACREAGE 95.5 Ac.
 OIL & GAS ROYALTY OWNER East Resources, Inc. et al. LEASE ACREAGE 187.25 Ac.
 LEASE NO. 99174-00

PROPOSED WORK: DRILL X CONVERT DRILL DEEPER REDRILL FRACTURE OR STIMULATE X PLUG OFF OLD FORMATION PERFORATE NEW FORMATION OTHER PHYSICAL CHANGE IN WELL (SPECIFY)

PLUG AND ABANDON CLEAN OUT AND REPLUG
 TARGET FORMATION Gordon ESTIMATED DEPTH 3,086' TVD
 WELL OPERATOR East Resources, Inc. DESIGNATED AGENT Michael McCown
 ADDRESS P. O. Box 5519 ADDRESS P. O. Box 5519
Vienna, W.Va. 26105 Vienna, W.Va. 26105

FEB 13 2004

B-O JACKSONBURG-STRINGTOWN (95)

FORM IV-b

State of West Virginia
Division of Environmental Protection
Section of Oil and Gas

me

Well Operator's Report of Well Work

Farm name: GLOVER, RAY F. JR., ETAL
LOCATION: Elevation: 1,159.00
District: MCELROY
Latitude: 6,625 Feet south of
Longitude: 7,000 Feet west of

Operator Well No.: MARTHA ELDER 16
Quadrangle: CENTERPOINT 7.5'
County: TYLER
39 Deg 27 Min 30 Sec.
80 Deg 40 Min 00 Sec.

Company: EAST RESOURCES, INC.
P.O. BOX 5519
VIENNA, WV 26105-5519

Agent: PHILIP S. ONDRUSEK

Inspector: MIKE UNDERWOOD
Permit Issued: 02/13/04
Well work Commenced: 04/16/04
Well work Completed: 04/29/04

Verbal plugging permission granted on:
Rotary X Cable _____ Rig _____
Total Depth (feet) 3239
Fresh water depths (ft) 610

Salt water depths (ft) NA
NA
Is coal being mined in area (Y/N) N
Coal Depths (ft): NA

Casing & Tubing Size	Used in Drilling	Left in Well	Cement Fill Up Cu. Ft.
8 5/8"	438.00'	438.00'	200 sks
4 1/2"	3220.05'	3220.05'	300 sks

RECEIVED
Office of Oil & Gas
Office of Chief
MAY 20 2004
WV Department of Environmental Protection

OPEN FLOW DATA Water Injection Well

This well was directionally drilled with bottom hole location 358' S and 256' W of surface location

Producing formation Gordon Pay zone depth (ft) 3082-3098

Gas: Initial open flow * MCF/d Oil: Initial open flow * Bbl/d
 Final open flow * MCF/d Final open flow * Bbl/d
 Time of open flow between initial and final tests * Hours

Static rock pressure * psig (surface pressure) after Hours

Second producing formation _____ Pay zone depth (ft) _____

Gas: Initial open flow _____ MCF/d Oil: Initial open flow _____ Bbl/d
 Final open flow _____ MCF/d Final open flow _____ Bbl/d
 Time of open flow between initial and final tests _____ Hours

Static rock pressure _____ psig (surface pressure) after _____ Hours

NOTE: ON BACK OF THIS FORM, PUT THE FOLLOWING: 1) DETAILS OF PERFORATED INTERVALS, FRACTURING OR STIMULATING, PHYSICAL CHANGE, ETC. 2) THE WELL LOG WHICH IS A SYSTEMATIC DETAILED GEOLOGICAL RECORD OF ALL FORMATIONS, INCLUDING COAL ENCOUNTERED BY THE WELLBORE.

For: EAST RESOURCES, INC
By: *Ben Elder*
Date: 5/19/04

TYL 1763

MAY 18 2004

Treatment :

Treated perforations 3084'-3098' w/ 250 gals 15% HCL, 342 Bbls cross linked gel and 21,500 # 20/40 sand

Well Log :

0	344	Sand and Shale
344	372	Sand
372	512	Shale
512	540	Sand
540	643	Shale
643	666	Sand
666	809	Shale
809	868	Sand
868	1024	Shale
1024	1060	Sand
1060	1182	Shale
1182	1207	Sand
1207	1410	Shale
1410	1451	Sand
1451	1488	Shale
1488	1504	Sand
1504	1526	Shale
1526	1547	Sand
1547	1598	Shale
1598	1644	Sand
1644	1900	Shale
1900	1990	Sand
1990	2212	Shale
2212	2304	Big Lime
2304	2430	Big Injun
2430	3052	Shale
3052	3058	Gordon Stray
3058	3074	Shale
3074	3098	Gordon
3098	3236	Shale