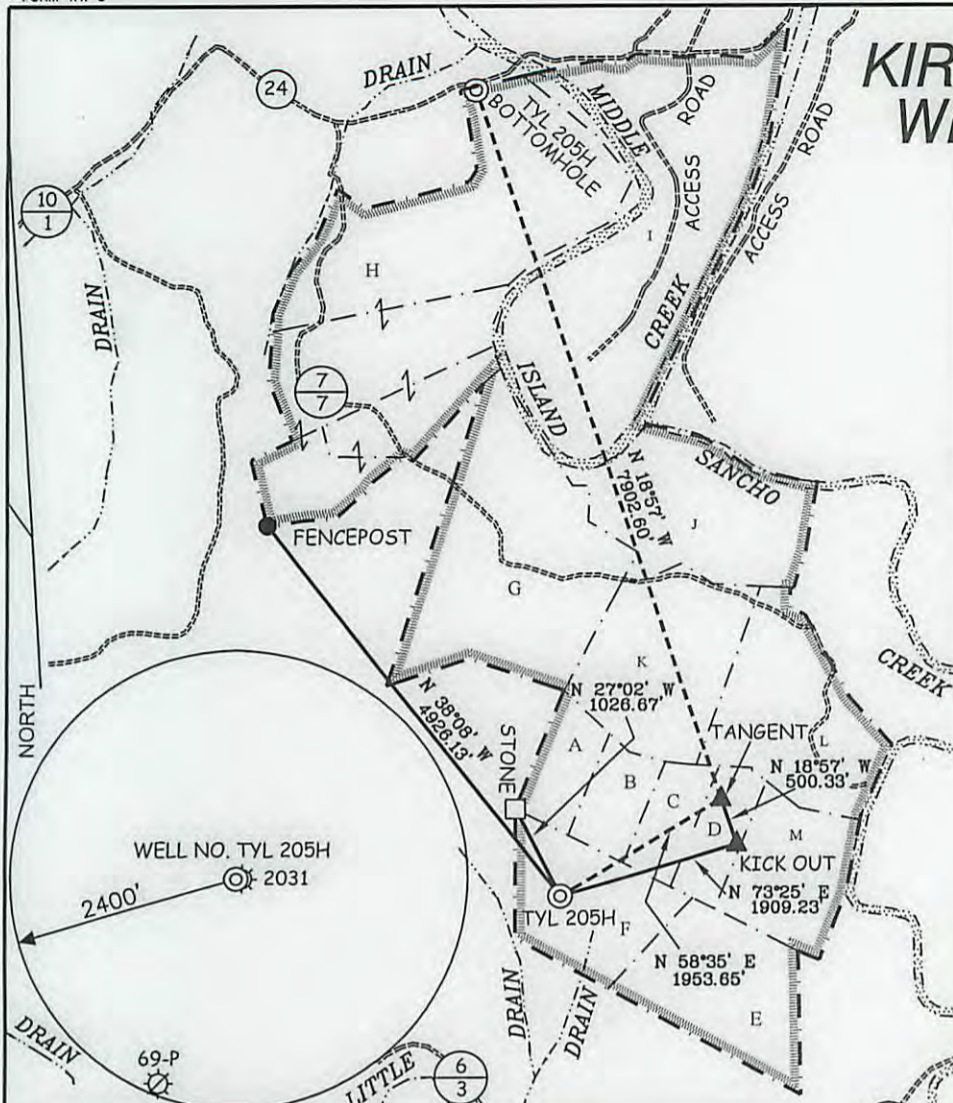


KIRK HADLEY LEASE WELL NO. TYL 205H

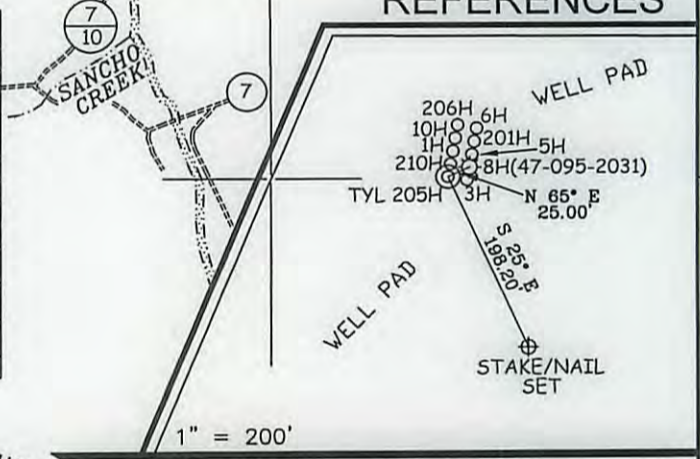


WELL NO. TYL 205H STATE PLANE COORDINATES (NORTH ZONE NAD'27) N. 354,017 E. 1,595,599 WELL NO. TYL 205H (NAD'27) LAT=(N) 39.46313 LONG=(W) 80.93240 WELL NO. TYL 205H (NAD'27) LAT=(N) 39°27'47.3" LONG=(W) 80°55'56.6" WELL NO. TYL 205H (NAD'83) LAT=(N) 39.46321 LONG=(W) 80.93223 WELL NO. TYL 205H (NAD'83) LAT=(N) 39°27'47.3" LONG=(W) 80°55'56.6" UTM (NAD'83) N. 4,368,184 E. 505,830	WELL NO. TYL 205H "KICK OUT" POINT STATE PLANE COORDINATES (NORTH ZONE NAD'27) N. 354,562 E. 1,597,428 "KICK OUT" POINT (NAD'27) LAT=(N) 39.46471 LONG=(W) 80.92595 "KICK OUT" POINT (NAD'27) LAT=(N) 39°27'53.0" LONG=(W) 80°55'33.4" "KICK OUT" POINT (NAD'83) LAT=(N) 39.46479 LONG=(W) 80.92578 "KICK OUT" POINT (NAD'83) LAT=(N) 39°27'53.0" LONG=(W) 80°55'32.8" UTM (NAD'83) N. 4,368,359 E. 506,395
WELL NO. TYL 205H TANGENT POINT STATE PLANE COORDINATES (NORTH ZONE NAD'27) N. 355,035 E. 1,597,266 TANGENT POINT (NAD'27) LAT=(N) 39.46600 LONG=(W) 80.92655 TANGENT POINT (NAD'27) LAT=(N) 39°27'57.6" LONG=(W) 80°55'35.6" TANGENT POINT (NAD'83) LAT=(N) 39.46608 LONG=(W) 80.92638 TANGENT POINT (NAD'83) LAT=(N) 39°27'57.9" LONG=(W) 80°55'35.0" UTM (NAD'83) N. 4,368,502 E. 506,333	WELL NO. TYL 205H BOTTOM HOLE STATE PLANE COORDINATES (SOUTH ZONE NAD'27) N. 362,510 E. 1,594,700 BOTTOM HOLE (NAD'27) LAT=(N) 39.48641 LONG=(W) 80.93606 BOTTOM HOLE (NAD'27) LAT=(N) 39°29'11.1" LONG=(W) 80°56'09.8" BOTTOM HOLE (NAD'83) LAT=(N) 39.48649 LONG=(W) 80.93589 BOTTOM HOLE (NAD'83) LAT=(N) 39°29'11.3" LONG=(W) 80°56'09.2" UTM (NAD'83) N. 4,370,767 E. 505,513

NOTES ON SURVEY

1. TIES TO WELLS, REFERENCES, AND CORNERS ARE BASED ON GRID NORTH FOR THE WV STATE PLANE COORDINATE SYSTEM NORTH ZONE NAD '27.
2. LEASE BOUNDARY SHOWN HEREON TAKEN FROM DEED BOOK 213 PAGE 74, DEED BOOK 88 PAGE 159, AND ADJOINING DEEDS.
3. SURFACE OWNER AND ADJOINER INFORMATION TAKEN FROM THE ASSESSOR AND COUNTY CLERK RECORDS OF TYLER COUNTY IN JULY, 2011.
4. WELL COORDINATES ESTABLISHED BY SURVEY GRADE GPS.

REFERENCES



LOT	TAXMAP/PARCEL	OWNER	ACERS ±	LEASE NUMBER
A	26/12	KIRK HADLEY	16 OF 162	1-291161-000
B	26/12	KIRK HADLEY	15 OF 162	1-309171-002
C	26/12	KIRK HADLEY	15 OF 162	3-034617-000
D	26/12	KIRK HADLEY	16 OF 162	1-309171-003
E	26/12	KIRK HADLEY	55 OF 162	1-309171-001
F	26/12	KIRK HADLEY	45 OF 162	1-309171-004
G	19/54	DEBORAH SUSAN REED	100	1-355081-000
H	19/52	RUTH MOORE	188.36	1-292575-001 & 1-281598-001
I	20/35	ROBERT C. SELLERS ETAL	140	1-309188-001 THROUGH 1-309188-003
J	20/97	DENNIS J. MOORE ETAL	66.84	1-292575-001, 1-291085-001, 1-291085-002, 1-291085-004, 1-291085-013, 1-291085-014
K	26/1	RUTH MOORE ETAL	61.78	1-291085-006, 1-292575-001, 1-291085-011, 1-291085-001, 1-324901-001, 1-291085-015, 1-291085-012
L	26/2	LARRY G. MOORE ETAL	63.4	1-292575-001, 1-291085-001, 1-324902-001, 1-291085-010, 1-291085-005, 1-291085-016, 1-291085-009
M	26/11	KIRK L. HADLEY	40	1-291161-000



I THE UNDERSIGNED, HEREBY CERTIFY THAT THIS PLAT IS CORRECT TO THE BEST OF MY KNOWLEDGE AND BELIEF AND SHOWS ALL THE INFORMATION REQUIRED BY LAW AND THE REGULATIONS ISSUED AND PRESCRIBED BY THE DIVISION OF ENVIRONMENTAL PROTECTION.

P.S. 677
Gregory A. Smith



(+) DENOTES LOCATION OF WELL ON UNITED STATES TOPOGRAPHIC MAPS.
 DATE AUGUST 9, 20 12
 OPERATORS WELL NO. KIRK HADLEY TYL 205H
 API WELL NO. 47 - 95 - 2071H6A
 STATE COUNTY PERMIT

MINIMUM DEGREE OF ACCURACY 1 / 200 FILE NO. 7422P205H (308-50)
 PROVEN SOURCE OF ELEVATION DGPS (SUBMETER MAPPING GRADE) SCALE 1" = 2,000'

STATE OF WEST VIRGINIA
 DIVISION OF ENVIRONMENTAL PROTECTION
 OFFICE OF OIL AND GAS



WELL TYPE: OIL GAS LIQUID INJECTION WASTE DISPOSAL IF "GAS" PRODUCTION STORAGE DEEP SHALLOW

LOCATION:
 ELEVATION 911' WATERSHED LITTLE SANCHO CREEK
 DISTRICT MEADE COUNTY TYLER QUADRANGLE MIDDLEBOURNE 7.5'
 SURFACE OWNER KIRK HADLEY ACREAGE 162±
 ROYALTY OWNER KIRK HADLEY, ET AL (16, 15, 15, 16, 45 & 55 OF 162, 61.78, 100, 188.36, 140, 66.84, 63.4 & 40 ACRES±)
 PROPOSED WORK: LEASE NO. _____
 DRILL CONVERT DRILL DEEPER REDRILL FRACTURE OR STIMULATE PLUG OFF OLD FORMATION
 PERFORATE NEW FORMATION PLUG AND ABANDON CLEAN OUT AND REPLUG OTHER
 PHYSICAL CHANGE IN WELL (SPECIFY) _____ TARGET FORMATION MARCELLUS
 ESTIMATED DEPTH TVD 6,201' / TMD 14,857'

WELL OPERATOR CHESAPEAKE APPALACHIA, LLC. DESIGNATED AGENT ERIC B. GILLESPIE
 ADDRESS P.O. BOX 18496 ADDRESS P.O. BOX 6070
OKLAHOMA CITY, OK 73154-0496 CHARLESTON, WV 25362 **11/23/2012**



Legend

- ◆ Other CHK Sites
- ◆ KIRK HADLEY PAD
- USGS NMIS Water Quality Well
- USGS NMIS Water Level Well
- USGS NURE Well
- ◆ CHK Baseline Sampling Location
- Streams
- 1500' Radius of Site
- Parcels Within 1500' of Site
- Parcels Outside the Radius



KIRK HADLEY PAD
39.45443
-80.92893

Notes:
1. Parcel Information from Chesapeake Energy.
2. CHK is abbreviation for Chesapeake



Chesapeake Energy
Kirk Hadley 910801,
Middlebourne 19er County, West Virginia

Site Parcel Map

Drawn	JEB	Checked	Approved	Figure no.
Date	8/13/2012	Date		1
Pub. no.	4810302312148110	File no.		
Scale	AS IS	Revision		

