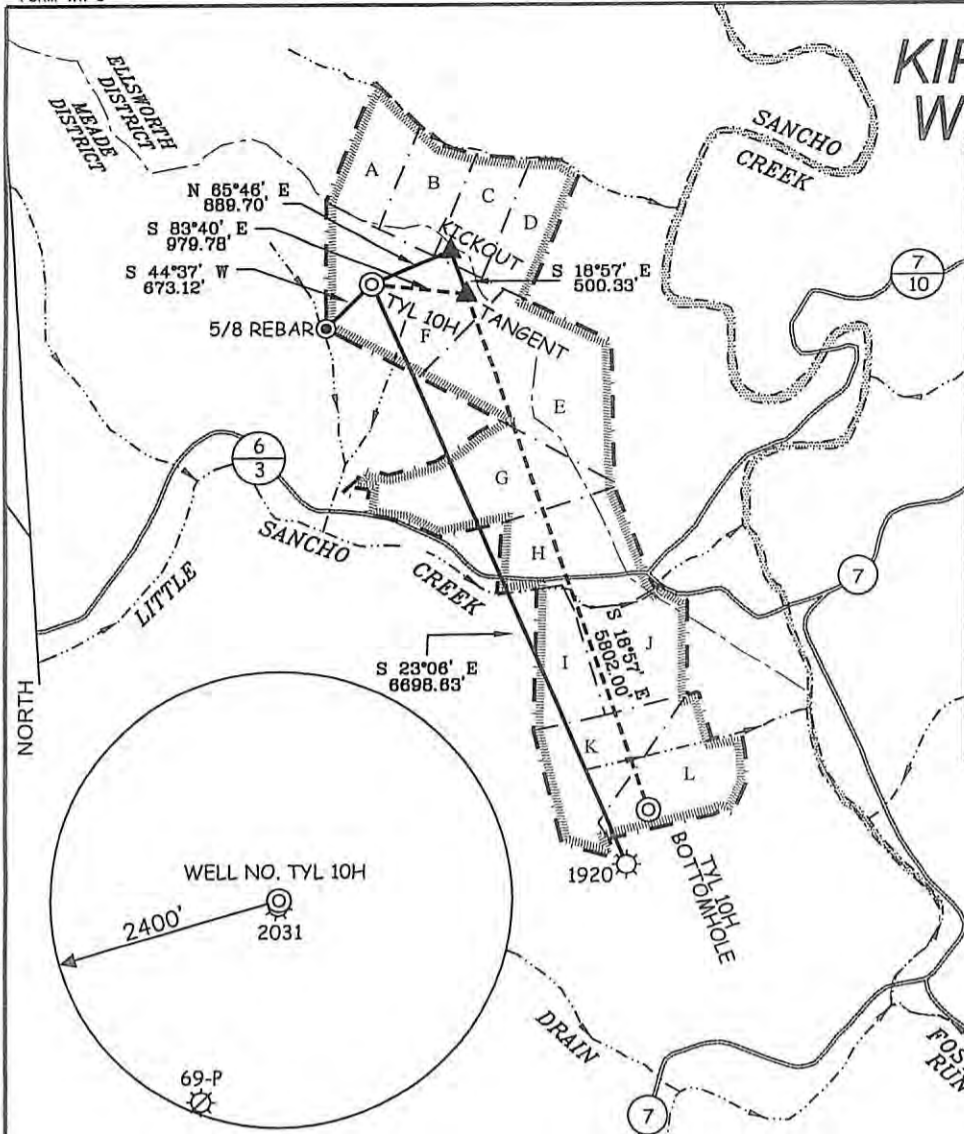


KIRK HADLEY LEASE WELL NO. TYL 10H



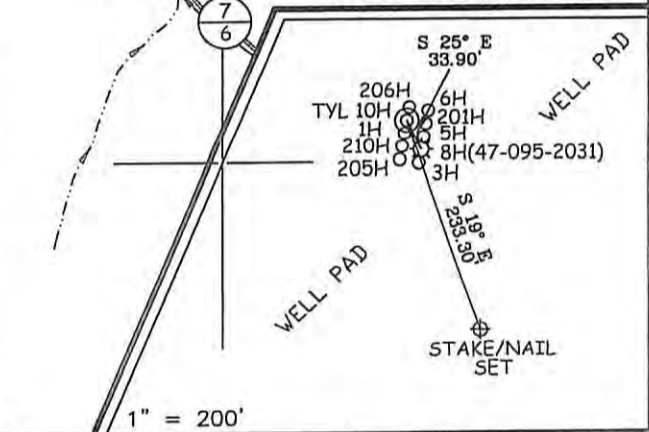
WELL NO. TYL 10H STATE PLANE COORDINATES (SOUTH ZONE NAD 27) N. 354,058 E. 1,595,607 WELL NO. TYL 10H (NAD 27) LAT=(N) 39.46325 LONG=(W) 80.93237 WELL NO. TYL 10H (NAD 27) LAT=(N) 39.27477 LONG=(W) 80.55565 WELL NO. TYL 10H (NAD 83) LAT=(N) 39.46332 LONG=(W) 80.93220 WELL NO. TYL 10H (NAD 83) LAT=(N) 39.27480 LONG=(W) 80.55559 UTM (NAD 83) N. 4,368,196 E. 505,832	WELL NO. TYL 10H "KICK OUT" POINT STATE PLANE COORDINATES (NORTH ZONE NAD 27) N. 354,423 E. 1,598,418 "KICK OUT" POINT (NAD 27) LAT=(N) 39.46428 LONG=(W) 80.92952 "KICK OUT" POINT (NAD 27) LAT=(N) 39.27514 LONG=(W) 80.55453 "KICK OUT" POINT (NAD 83) LAT=(N) 39.46436 LONG=(W) 80.92935 "KICK OUT" POINT (NAD 83) LAT=(N) 39.27517 LONG=(W) 80.55457 UTM (NAD 83) N. 4,368,312 E. 506,078
WELL NO. TYL 10H TANGENT POINT STATE PLANE COORDINATES (NORTH ZONE NAD 27) N. 353,950 E. 1,598,581 TANGENT POINT (NAD 27) LAT=(N) 39.46299 LONG=(W) 80.92892 TANGENT POINT (NAD 27) LAT=(N) 39.27468 LONG=(W) 80.55441 TANGENT POINT (NAD 83) LAT=(N) 39.46307 LONG=(W) 80.92875 TANGENT POINT (NAD 83) LAT=(N) 39.27471 LONG=(W) 80.55435 UTM (NAD 83) N. 4,368,168 E. 506,130	WELL NO. TYL 10H BOTTOM HOLE STATE PLANE COORDINATES (SOUTH ZONE NAD 27) N. 348,462 E. 1,598,464 BOTTOM HOLE (NAD 27) LAT=(N) 39.44801 LONG=(W) 80.92194 BOTTOM HOLE (NAD 27) LAT=(N) 39.25519 LONG=(W) 80.55190 BOTTOM HOLE (NAD 83) LAT=(N) 39.44809 LONG=(W) 80.92177 BOTTOM HOLE (NAD 83) LAT=(N) 39.25517 LONG=(W) 80.55184 UTM (NAD 83) N. 4,368,506 E. 506,731

NOTES ON SURVEY

1. TIES TO WELLS, REFERENCES, AND CORNERS ARE BASED ON GRID NORTH FOR THE WV STATE PLANE COORDINATE SYSTEM NORTH ZONE NAD '27.
2. LEASE BOUNDARY SHOWN HEREON TAKEN FROM DEED BOOK 213 PAGE 74, DEED BOOK 88 PAGE 159, AND ADJOINING DEEDS.
3. SURFACE OWNER AND ADJOINER INFORMATION TAKEN FROM THE ASSESSOR AND COUNTY CLERK RECORDS OF TYLER COUNTY IN JULY, 2011.
4. WELL COORDINATES ESTABLISHED BY SURVEY GRADE GPS.

REFERENCES

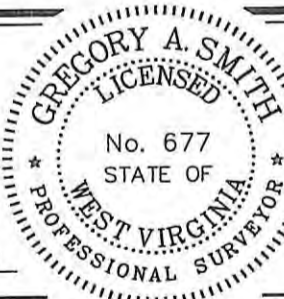
LOT	TAXMAP/PARCEL	OWNER	ACERS ±	LEASE NUMBER
A	26/12	KIRK HADLEY	16 OF 162	1-291161-000
B	26/12	KIRK HADLEY	15 OF 162	1-309171-002
C	26/12	KIRK HADLEY	15 OF 162	3-034617-000
D	26/12	KIRK HADLEY	16 OF 162	1-309171-003
E	26/12	KIRK HADLEY	55 OF 162	1-309171-001
F	26/12	KIRK HADLEY	45 OF 162	1-309171-004
G	3/1	JOHN WATSON	39.43	1-309111-001, 1-355082-001, 1-355084-001 & 1-355080-001
H	3/4	E. LIVINGSTON	33 OF 62.53	1-344616-001
I	3/4	E. LIVINGSTON	17 OF 62.53	1-344616-001
J	3/5	E. LIVINGSTON	25	1-344616-001
K	3/4	E. LIVINGSTON	28.25 OF 62.53	1-344616-001
L	3/7	MATTHEW CHILDERS	27.25	1-291181-002 & 1-324934-001



I THE UNDERSIGNED, HEREBY CERTIFY THAT THIS PLAT IS CORRECT TO THE BEST OF MY KNOWLEDGE AND BELIEF AND SHOWS ALL THE INFORMATION REQUIRED BY LAW AND THE REGULATIONS ISSUED AND PRESCRIBED BY THE DIVISION OF ENVIRONMENTAL PROTECTION.

P.S. 677

Gregory A. Smith



(+) DENOTES LOCATION OF WELL ON UNITED STATES TOPOGRAPHIC MAPS.

DATE AUGUST 9, 20 12

OPERATORS WELL NO. KIRK HADLEY TYL 10H

API WELL NO. 47 - 95 - 2072H6A
STATE COUNTY PERMIT

MINIMUM DEGREE OF ACCURACY 1 / 200 FILE NO. 7422P10HR4 (308-50)

PROVEN SOURCE OF ELEVATION DGPS (SUBMETER MAPPING GRADE) SCALE 1" = 2,000'

STATE OF WEST VIRGINIA
DIVISION OF ENVIRONMENTAL PROTECTION
OFFICE OF OIL AND GAS



WELL TYPE: OIL GAS LIQUID INJECTION WASTE DISPOSAL IF "GAS" PRODUCTION STORAGE DEEP SHALLOW

LOCATION: ELEVATION 911' WATERSHED LITTLE SANCHO CREEK

DISTRICT MEADE COUNTY TYLER QUADRANGLE MIDDLEBOURNE 7.5'

SURFACE OWNER KIRK HADLEY ACREAGE 162±

ROYALTY OWNER KIRK HADLEY, ET AL (16, 15, 15, 16, 45 & 55 OF 162, 39.43, 62.53, 25, & 27.25 ACRES±)

PROPOSED WORK: DRILL CONVERT DRILL DEEPER REDRILL FRACTURE OR STIMULATE PLUG OFF OLD FORMATION PERFORATE NEW FORMATION PLUG AND ABANDON CLEAN OUT AND REPLUG OTHER

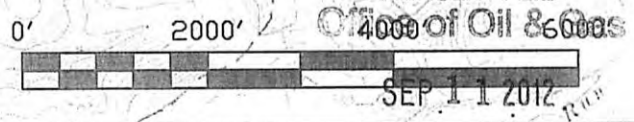
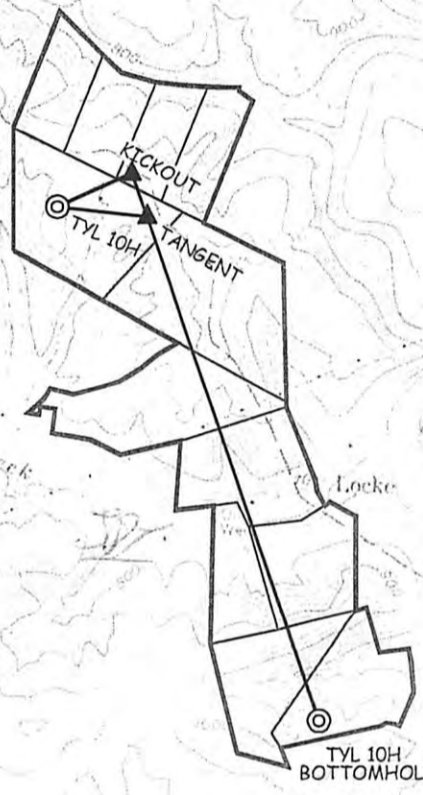
PHYSICAL CHANGE IN WELL (SPECIFY) _____ TARGET FORMATION MARCELLUS
ESTIMATED DEPTH TVD 6189' / TMD 12,407'

WELL OPERATOR CHESAPEAKE APPALACHIA, LLC. DESIGNATED AGENT ERIC B. GILLESPIE
ADDRESS P.O. BOX 18496 ADDRESS P.O. BOX 6070
OKLAHOMA CITY, OK 73154-0496 CHARLESTON, WV 25362

**KIRK HADLEY
TYL 10H**



E L L S W O R T



SLS
SMITH LAND SURVEYING, INC.
P.O. BOX 150 GLENVILLE, WV, 26351
PH: (304) 462-5634 FAX: (304) 462-5656 E-MAIL: sls@slssurveys.com

TYLER COUNTY		
MIDDLEBOURNE, WV 7.5' QUAD		
DRAWN BY C.P.M.	FILE NO. 742ZP10HR4TOP.DWG	DATE 08-09-12

OPERATOR:
CHESAPEAKE APPALACHIA, LLC
P.O. BOX 6070 Environmental Protection
CHARLESTON, WV 25362

11/30/2012