

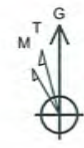
95-02079



Antero Resources
Thorkildson Unit 2H
Tyler County WV
Northing: 14306211.27
Easting: 1713821.12
As Drilled

LEGEND

- Thorkildson Unit 1H, Original Wellpath, As Drilled V0
- Ed Arnold Unit 1H, Original Wellpath, Original Wellpath V0
- Sweeney Unit 2H, Original Wellpath, Original Wellpath V0
- Thorkildson Unit 2H, Original Wellpath, Plan 5 V0
- Ed Arnold Unit 2H, Original Wellpath, Original Wellpath V0
- Sweeney Unit 1H, Original Wellpath, Original Wellpath V0
- As Drilled



To convert Magnetic North to Grid, Subtract 8.65°
 To convert True North to Grid, Subtract 0.16°

Azimuths to Grid North
 True North: -0.17°
 Magnetic North: -8.65°

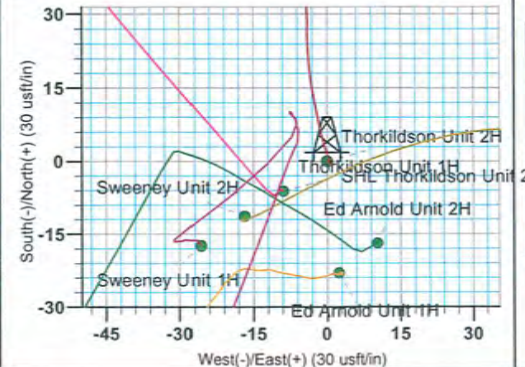
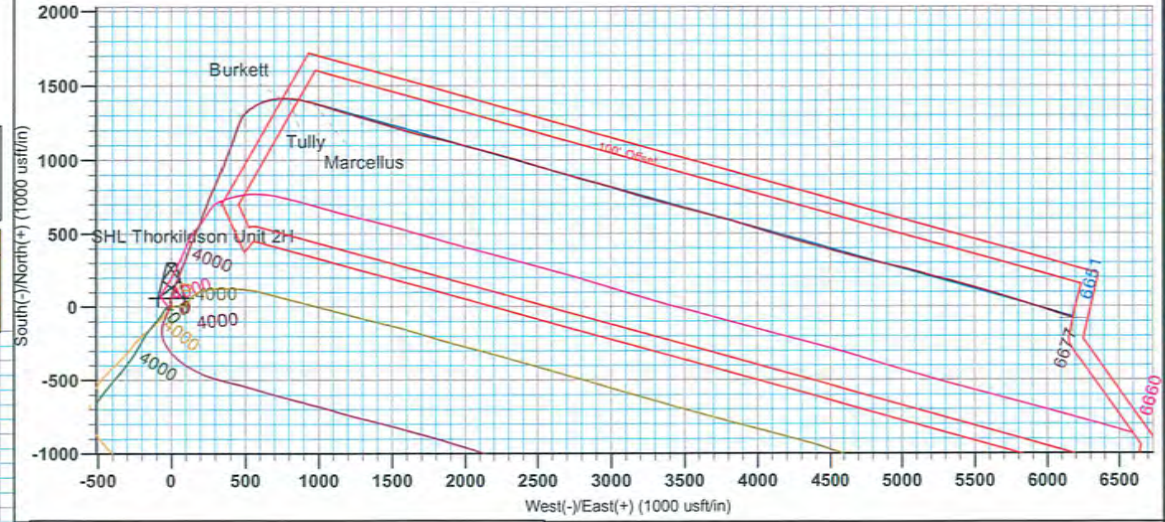
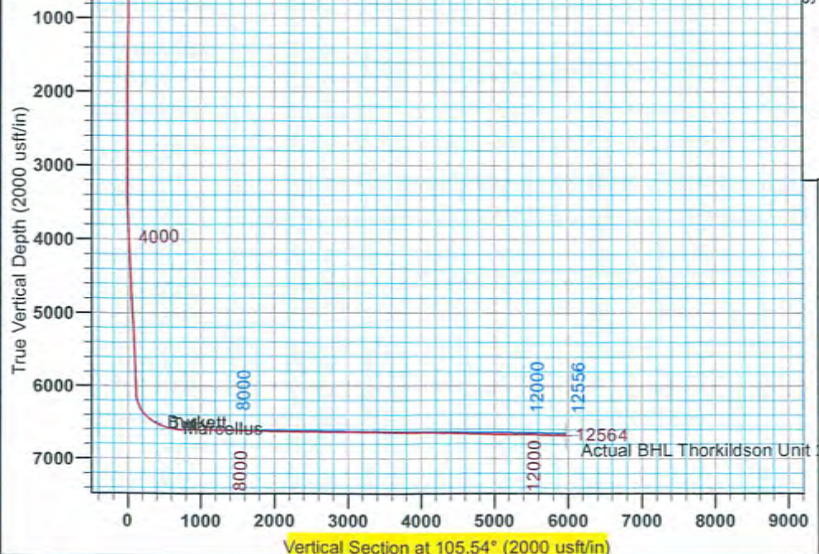
Magnetic Field
 Strength: 52481.85nT
 Dip Angle: 66.99°
 Date: 5/9/2013
 Model: IGRF2010

WELL DETAILS: Thorkildson Unit 2H

+N-S	+E-W	Ground Level:	749.0	Slot
0.0	0.0	Northing	1713821.1239° 23' 45.467 N80° 44' 24.615 W	
		Easting		
		Latitude		
		Longitude		

DESIGN TARGET DETAILS

Name	TVD	+N-S	+E-W	Northing	Easting	Latitude	Longitude
SHL Thorkildson Unit 2H	0.0	0.0	0.0	14306211.27	1713821.1239° 23' 45.467 N80° 44' 24.615 W		
Actual BHL Thorkildson Unit 2H	1256.6	-83.1	6179.04306	128.13	1720000.189° 23' 44.462 N80° 43' 5.880 W		
SHL (UTM meters)				4,360,780m	522,388m		
BHL (UTM meters)				4,360,742m	524,259m		



SITE DETAILS: Ed Arnold Pad
 Ed Arnold Pad McElroy District
 Site Centre Northing: 14306188.32
 Easting: 1713823.50
 Positional Uncertainty: 2.0
 Convergence: 0.16
 Local North: Grid

PROJECT DETAILS: Tyler County WV
 Geodetic System: Universal Transverse Mercator (US Survey Feet)
 Datum: NAD 1927 (NADCON CONUS)
 Ellipsoid: Clarke 1886
 Zone: Zone 17N (84 W to 78 W)
 System Datum: Mean Sea Level

FORMATION TOP DETAILS
 No formation data is available

Deanna Jacobs 15:05, September 09 2013
 Scientific Drilling
 421 South Eagle Lane
 Oklahoma City, OK

