

RPT 8 LEASE 85 ACRES ± WELL NO. RPT 8-3

WELL NO. RPT 8-3
STATE PLANE COORDINATES
NORTH ZONE (NAD '83)
N. 360,710.7
E. 1,605,522.0

LAT=(N) 39.483210
LONG=(W) 80.786070

UTM (NAD '83)(METERS)
N. 4,370,423.0
E. 518,397.9

LANDING POINT
WELL NO. RPT 8-3
STATE PLANE COORDINATES
NORTH ZONE (NAD '83)
N. 360,763.9
E. 1,606,355.3

LAT=(N) 39.483389
LONG=(W) 80.783121

UTM (NAD '83)(METERS)
N. 4,370,443.5
E. 518,651.5

BOTTOM HOLE
WELL NO. RPT 8-3
STATE PLANE COORDINATES
NORTH ZONE (NAD '83)
N. 356,695.0
E. 1,608,989.7

LAT=(N) 39.472322
LONG=(W) 80.773584

UTM (NAD '83)(METERS)
N. 4,369,217.3
E. 519,474.8

REFERENCES

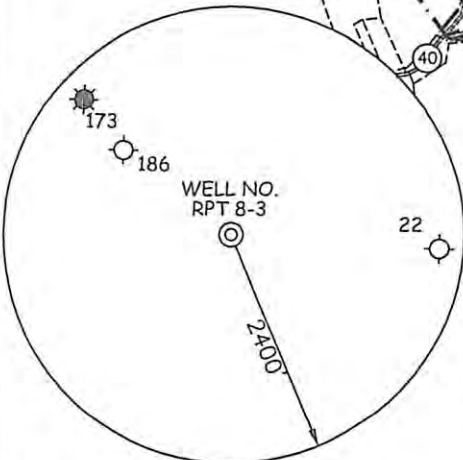
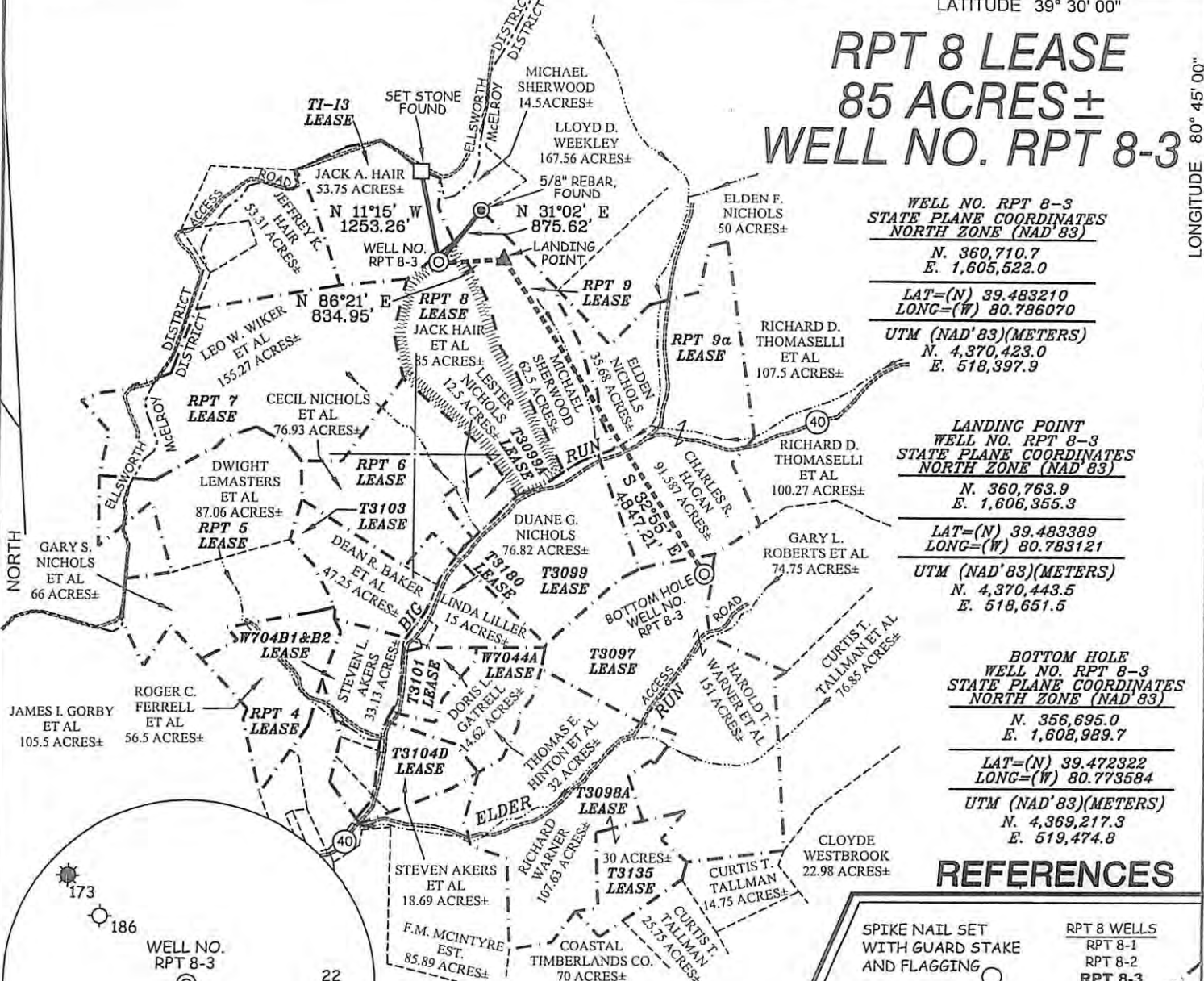
SPIKE NAIL SET WITH GUARD STAKE AND FLAGGING
RPT 8 WELLS
RPT 8-1
RPT 8-2
RPT 8-3

SPIKE NAIL SET WITH GUARD STAKE AND FLAGGING
APPROXIMATE LEASE BOUNDARY
N 26°09' W 259.35'
S 88°59' E 217.71'

1" = 200'

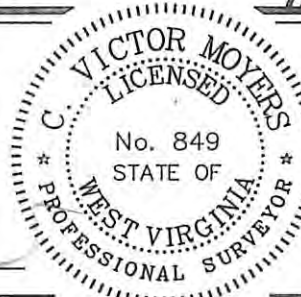
NOTES ON SURVEY

1. TIES TO WELLS, CORNERS & REFERENCES ARE BASED ON GRID NORTH FOR THE WV STATE PLANE COORDINATE SYSTEM NORTH ZONE NAD '83.
2. LEASE BOUNDARY SHOWN HEREON TAKEN FROM DEED BOOK 60 PAGE 577.
3. SURFACE OWNER AND ADJOINER INFORMATION TAKEN FROM THE ASSESSOR AND COUNTY CLERK RECORDS OF TYLER COUNTY IN JULY, 2012.
4. WELL LAT./LONG. (NAD'83) ESTABLISHED BY DGPS (SURVEY GRADE).



I THE UNDERSIGNED, HEREBY CERTIFY THAT THIS PLAT IS CORRECT TO THE BEST OF MY KNOWLEDGE AND BELIEF AND SHOWS ALL THE INFORMATION REQUIRED BY LAW AND THE REGULATIONS ISSUED AND PRESCRIBED BY THE DIVISION OF ENVIRONMENTAL PROTECTION.

P.S. 849 *C. Victor Moyers*



(+) DENOTES LOCATION OF WELL ON UNITED STATES TOPOGRAPHIC MAPS.
 DATE OCTOBER 29, 20 12
 OPERATORS WELL NO. RPT 8-3
 API WELL NO. 47 - 45 - 2083 HG
 STATE COUNTY PERMIT

MINIMUM DEGREE OF ACCURACY 1/200 FILE NO. 7872P8-3 (389-51)
 PROVEN SOURCE OF ELEVATION DGPS (SURVEY GRADE) SCALE 1" = 2000'

STATE OF WEST VIRGINIA
 DIVISION OF ENVIRONMENTAL PROTECTION
 OFFICE OF OIL AND GAS



WELL TYPE: OIL GAS INJECTION WASTE DISPOSAL IF "GAS" PRODUCTION STORAGE DEEP SHALLOW

LOCATION: ELEVATION 1260'(GROUND) 1244'(PROPOSED) WATERSHED BIG RUN
 DISTRICT McELROY COUNTY TYLER QUADRANGLE SHIRLEY 7.5'

SURFACE OWNER JACK HAIR ET AL ACREAGE 85±
 ROYALTY OWNER JACK HAIR (85 AC.±), MICHAEL SHERWOOD (62.5 AC.±), JUSTUS G. SPENCER (12.7 AC.±)

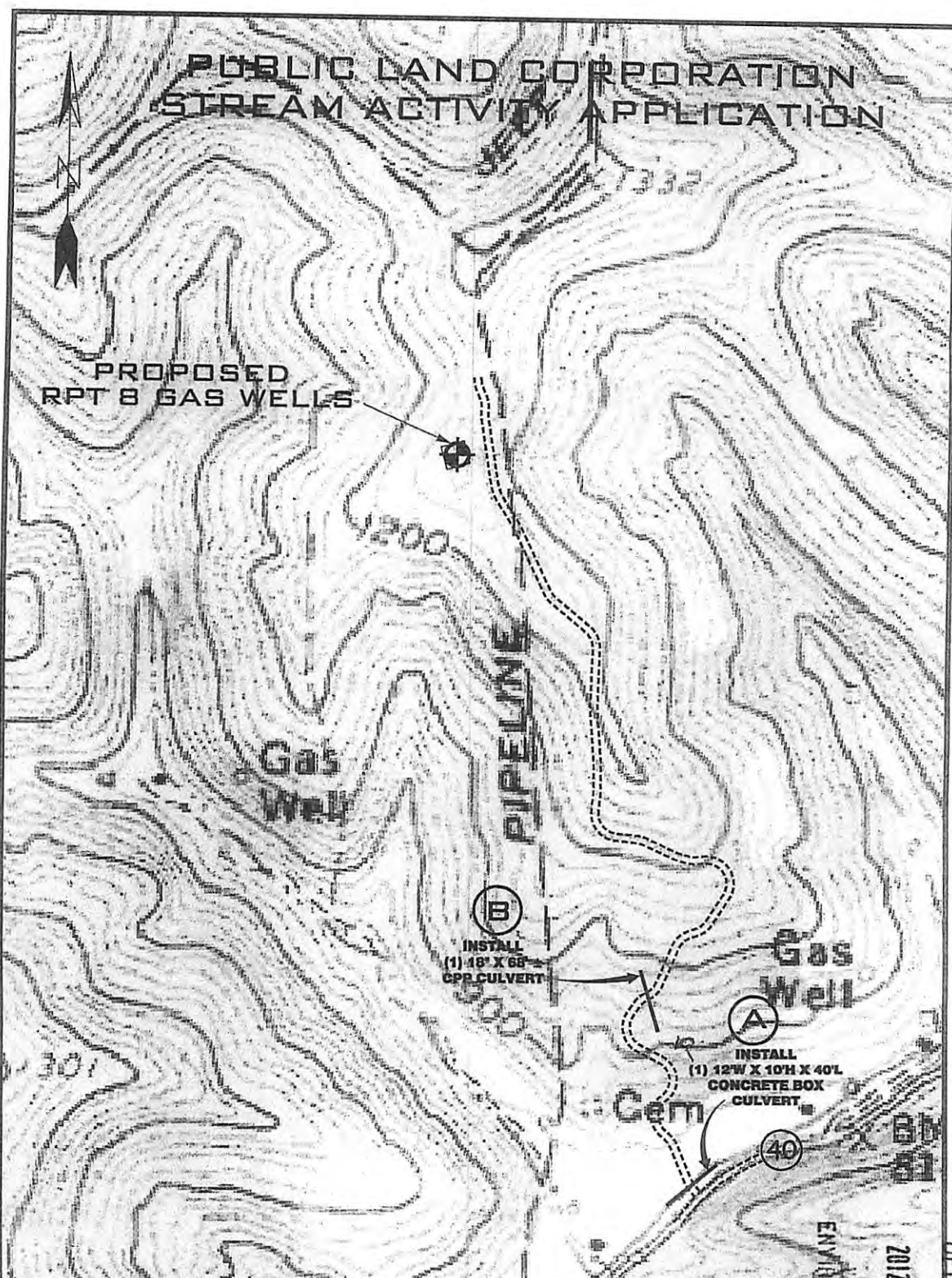
PROPOSED WORK: LEASE NO. RPT 8, RPT 9, RPT 9a
 DRILL CONVERT DRILL DEEPER REDRILL FRACTURE OR STIMULATE PLUG OFF OLD FORMATION
 PERFORATE NEW FORMATION PLUG AND ABANDON CLEAN OUT AND REPLUG OTHER

PHYSICAL CHANGE IN WELL (SPECIFY) _____ TARGET FORMATION MARCELLUS
 ESTIMATED DEPTH 7500'

WELL OPERATOR JAY BEE OIL & GAS, INC. DESIGNATED AGENT RANDY BRODA
 ADDRESS 1720 RT. 22 EAST UNION, NJ 07083 ADDRESS RT. 1 BOX 5 CAIRO, WV 26337

02/08/2013

PUBLIC LAND CORPORATION
 STREAM ACTIVITY APPLICATION



95-2083

NAD' 83		
POINT #	LATITUDE	LONGITUDE
A	39.473482 (N)	80.893632 (W)
B	39.476970 (N)	80.783030 (W)



RECEIVED
 OFFICE OF OIL & GAS

SLS
 SMITH LAND SURVEYING, INC.
 P.O. BOX 150 GLENVILLE, WV. 26351
 PH: (304) 462-5634 FAX: (304) 462-5636 E-MAIL: sls@slsurveyors.com

TOPO SECTION OF:
 SHIRLEY, WV 7.5' QUAD
 DRAWN BY: K.D.W. FILE NO: 7872PLC.DWG DATE: 10/26/12

OPERATOR:
 JAY BEE OIL & GAS
 1720 RT. 22 EAST
 UNION, NJ 07083

95-02083