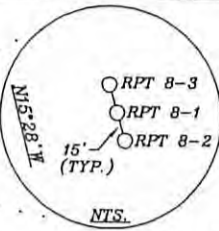
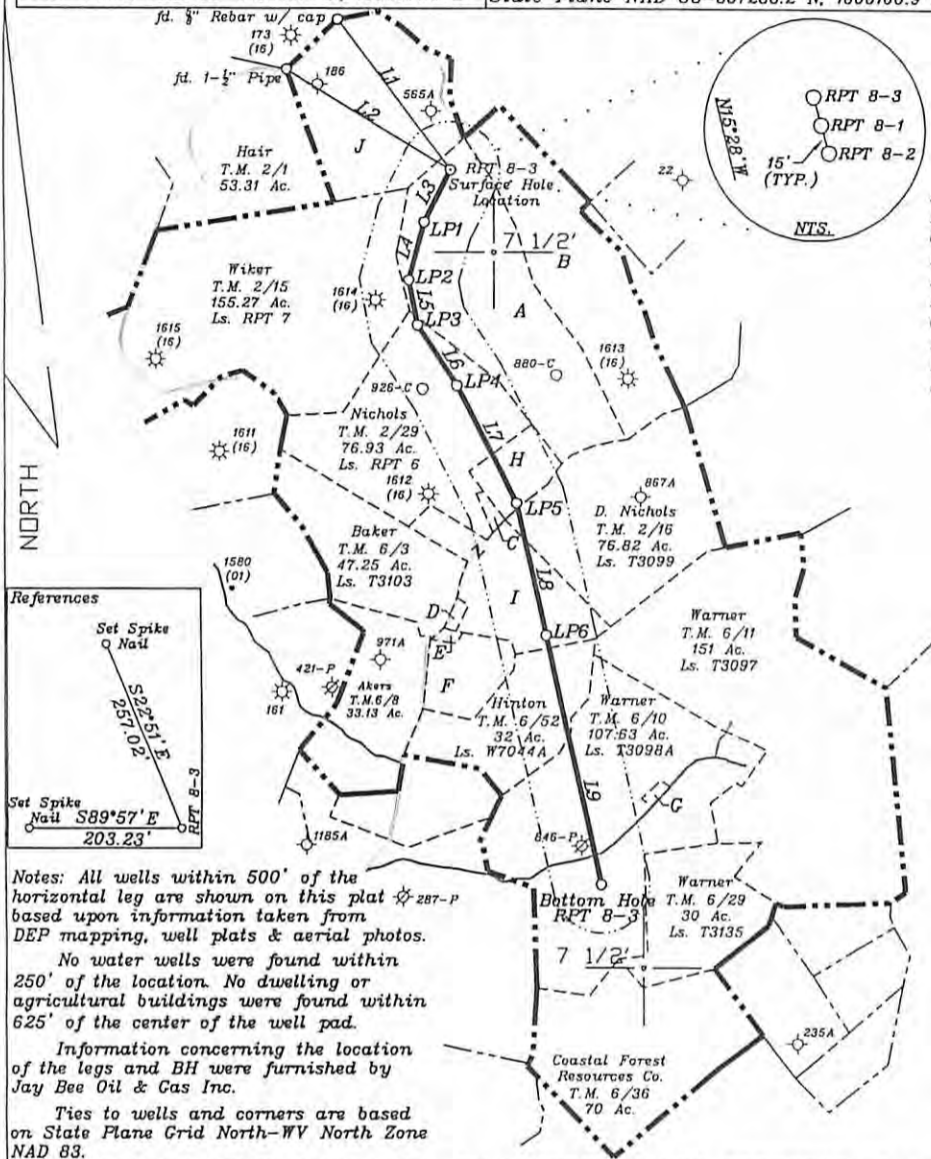
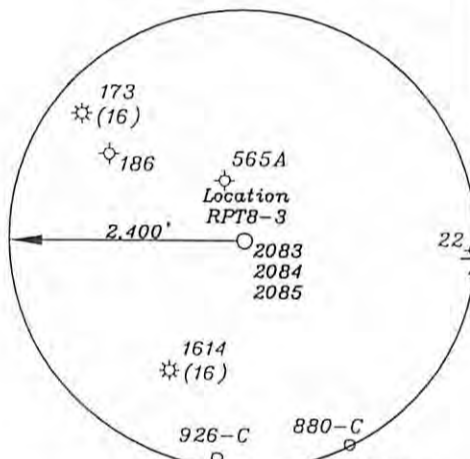


Surface Hole Location UTM NAD 83(Meters)-4370421.7 N, 518393.5 E Geo. NAD 83-39.483199 N, 80.786121 W State Plane NAD 83-360706.7 N, 1605507.6 E	Landing Point 3 UTM NAD 83(Meters)-4369923.2 N, 518295.9 E Geo. NAD 83-39.478709 N, 80.787270 W State Plane NAD 83-359076.2 N, 1605159.9 E	Landing Point 6 UTM NAD 83(Meters)-4368953.9 N, 518712.2 E Geo. NAD 83-39.469966 N, 80.782457 W State Plane NAD 83-355872.6 N, 1606472.9 E
Landing Point 1 UTM NAD 83(Meters)-4370254.5 N, 518312.9 E Geo. NAD 83-39.481694 N, 80.787063 W State Plane NAD 83-360162.3 N, 1605234.0 E	Landing Point 4 UTM NAD 83(Meters)-4369733.8 N, 518421.2 E Geo. NAD 83-39.477000 N, 80.785818 W State Plane NAD 83-358447.8 N, 1605560.8 E	Bottom Hole Location UTM NAD 83(Meters)-4368168.7 N, 518893.5 E Geo. NAD 83-39.462887 N, 80.780372 W State Plane NAD 83-353285.9 N, 1607024.7 E
Landing Point 2 UTM NAD 83(Meters)-4370066.6 N, 518266.6 E Geo. NAD 83-39.480002 N, 80.787607 W State Plane NAD 83-359548.4 N, 1605071.5 E	Landing Point 5 UTM NAD 83(Meters)-4369368.4 N, 518612.0 E Geo. NAD 83-39.473703 N, 80.783610 W State Plane NAD 83-357238.2 N, 1606166.9 E	



- A-Hair T.M. 2/17 85 Ac. Ls. RPT 8
- B-Sherwood T.M. 2/18 62.5 Ac.
- C-Nichols T.M. 6/4 1.25 Ac.
- D-Cole T.M. 6/5 1 Ac.
- E-Hostuttler T.M. 6/6 0.38 Ac.
- F-Catrell T.M. 6/7 14.62 Ac.
- G-Warner T.M. 6/10.1 0.368 Ac.
- H-D. Nichols, et al T.M. 2/19 12.5 Ac. Ls. T3099A
- I-Liller T.M. 6/3.1 15 Ac. Ls. T3180
- J-Hair T.M. 2/2 53.75 Ac. Ls. TI-13

NUMBER	DIRECTION	DISTANCE
L1	S37°31'E	1,904'
L2	S58°44'E	1,988'
L3	S26°41'W	609'
L4	S14°50'W	635'
L5	S10°36'E	480'
L6	S32°32'E	745'
L7	S26°37'E	1,353'
L8	S12°38'E	1,399'
L9	S12°02'E	2,645'



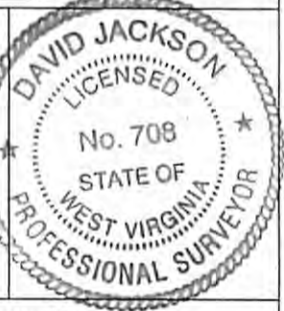
Notes: All wells within 500' of the horizontal leg are shown on this plat based upon information taken from DEP mapping, well plats & aerial photos. No water wells were found within 250' of the location. No dwelling or agricultural buildings were found within 625' of the center of the well pad. Information concerning the location of the legs and BH were furnished by Jay Bee Oil & Gas Inc. Ties to wells and corners are based on State Plane Grid North-WV North Zone NAD 83.

(+) DENOTES LOCATION OF WELL ON UNITED STATES TOPOGRAPHIC MAPS

FILE NO. _____
 DRAWING NO. 1
 SCALE 1" = 2000'
 MINIMUM DEGREE OF ACCURACY 1 in 200
 PROVEN SOURCE OF ELEVATION GPS
submeter unit

I THE UNDERSIGNED, HEREBY CERTIFY THAT THIS PLAT IS CORRECT TO THE BEST OF MY KNOWLEDGE AND BELIEF AND SHOWS ALL THE INFORMATION REQUIRED BY LAW AND THE RULES ISSUED AND PRESCRIBED BY THE DEPARTMENT OF ENVIRONMENTAL PROTECTION.

(SIGNED) David Jackson
 R.P.E. _____ L.L.S. 708



STATE OF WEST VIRGINIA
 Division of Environmental Protection
 OFFICE OF OIL AND GAS

DATE April 21, 2015
 OPERATOR'S WELL NO. RPT 8-3
 API WELL NO. _____

WELL TYPE: OIL GAS LIQUID INJECTION WASTE DISPOSAL STATE 47 COUNTY 095 PERMIT 02083
 (IF 'GAS') PRODUCTION X STORAGE DEEP SHALLOW X

LOCATION: ELEVATION 1,244.5' WATER SHED Big Run
 DISTRICT McElroy COUNTY Tyler
 QUADRANGLE Shirley 7 1/2'

SURFACE OWNER Jack Hair et al ACREAGE 85 ac
 OIL & GAS ROYALTY OWNER Jack Hair(85 Ac.), Cecil Nichols(76.93 Ac.), Lester Nichols(12.5 Ac.), Duane G. Nichols(76.82 Ac.), Linda Liller(15 Ac.), Thomas E. Hilton(32 Ac.) & Richard Warner(107.63 Ac.)

LEASE NO. RPT 8, RPT 6, T3098A, T3180, W7044A & T3099A

PROPOSED WORK: DRILL X CONVERT DRILL DEEPER REDRILL FRACTURE OR STIMULATE X PLUG OFF OLD FORMATION PERFORATE NEW FORMATION X OTHER PHYSICAL CHANGE IN WELL (SPECIFY) _____

PLUG AND ABANDON CLEAN OUT AND REPLUG
 TARGET FORMATION Marcellus ESTIMATED DEPTH 7,500'+ Horizontal leg
 WELL OPERATOR Jay Bee Oil & Gas, Inc. DESIGNATED AGENT Randy Broda
 ADDRESS 1720 Rt. 22 East Union, NJ 07083 ADDRESS Rt. 1 Box 5 Cairo, WV 26337

06/12/2015

LONGITUDE 80-45-00 W BH Bottom Hole 13,424'

LONGITUDE 80-47-00 W TH Top Hole 6,004'