

State of West Virginia
Department of Environmental Protection - Office of Oil and Gas
Well Operator's Report of Well Work

API 47 - 095 - 02092 County Tyler District McElroy
Quad Shirley 7 1/2' Pad Name T1-03 Field/Pool Name _____
Farm name Lisby, Donald J. and Judith Well Number T1-03-1
Operator (as registered with the OOG) Jay-Bee Oil & Gas, Inc.
Address 3570 Shields Hill Rd. City Cairo State WV Zip 26337

As Drilled location NAD 83/UTM Attach an as-drilled plat, profile view, and deviation survey
Top hole Northing 517,069.314 Easting 4,366,583.708
Landing Point of Curve Northing 517,284.236 Easting 4,366,417.090
Bottom Hole Northing 518,520.611 Easting 4,365,350.148

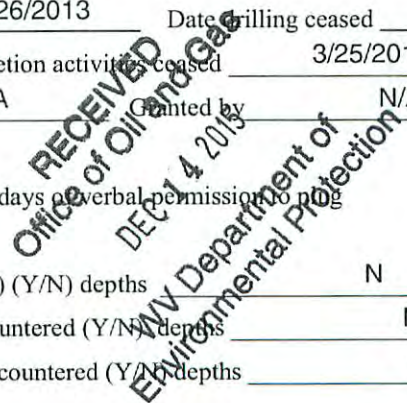
Elevation (ft) 722.85' GL Type of Well New Existing Type of Report Interim Final
Permit Type Deviated Horizontal Horizontal 6A Vertical Depth Type Deep Shallow
Type of Operation Convert Deepen Drill Plug Back Redrilling Rework Stimulate
Well Type Brine Disposal CBM Gas Oil Secondary Recovery Solution Mining Storage Other _____
Type of Completion Single Multiple Fluids Produced Brine Gas NGL Oil Other _____
Drilled with Cable Rotary

Drilling Media Surface hole Air Mud Fresh Water Intermediate hole Air Mud Fresh Water Brine
Production hole Air Mud Fresh Water Brine
Mud Type(s) and Additive(s)
Enviromul

Date permit issued 5/24/2013 Date drilling commenced 6/26/2013 Date drilling ceased 9/12/2013
Date completion activities began 10/21/2013 Date completion activities ceased 3/25/2014
Verbal plugging (Y/N) N Date permission granted N/A Granted by N/A

Please note: Operator is required to submit a plugging application within 5 days of verbal permission to plug

Freshwater depth(s) ft 65-90' Open mine(s) (Y/N) depths N
Salt water depth(s) ft N/A Void(s) encountered (Y/N) depths N
Coal depth(s) ft N/A Cavern(s) encountered (Y/N) depths N
Is coal being mined in area (Y/N) N



Reviewed by:
DmH
WSA 02/19/2016

API 47-095 - 02092 Farm name Lisby, Donald J. and Judith Well number T1-03-1

CASING STRINGS	Hole Size	Casing Size	Depth	New or Used	Grade wt/ft	Basket Depth(s)	Did cement circulate (Y/ N) * Provide details below*
Conductor	17"	16"	30'	New	20/32/24		Y
Surface	15"	11 3/4"	336.5'	New	20/23/24	50'	Y
Coal							
Intermediate 1	11"	8 5/8"	2020'	New	20/17/24	1500'	Y
Intermediate 2							
Intermediate 3							
Production	7 7/8"	5 1/2"	12,185'	New	17/20		Y
Tubing							
Packer type and depth set							

Comment Details _____

CEMENT DATA	Class/Type of Cement	Number of Sacks	Slurry wt (ppg)	Yield (ft ³ /sks)	Volume (ft ³)	Cement Top (MD)	WOC (hrs)
Conductor							
Surface	Class A	124.6	15.2	1.26	157	CTS	08
Coal							
Intermediate 1	Class A	377	14.5	1.35	510	CTS	08
Intermediate 2							
Intermediate 3							
Production	Class A	1,563.7	14.3	1.35	2111	300' from surface	08
Tubing							

Drillers TD (ft) 12,214' Loggers TD (ft) 12,214'
 Deepest formation penetrated Marcellus Plug back to (ft) N/A
 Plug back procedure N/A

Kick off depth (ft) 5,559'

Check all wireline logs run caliper density deviated/directional induction
 neutron resistivity gamma ray temperature sonic

Well cored Yes No Conventional Sidewall Were cuttings collected Yes No

DESCRIBE THE CENTRALIZER PLACEMENT USED FOR EACH CASING STRING Spiral centralizer every joint from TD back to start of
90 degree.
90 - 70 degree every second joint.
70 degree - KOP every third joint.
KOP - Surface centralizer placed every 500'.

Received
Office of Oil & Gas
DEC 14 2015

WAS WELL COMPLETED AS SHOT HOLE Yes No DETAILS _____

WAS WELL COMPLETED OPEN HOLE? Yes No DETAILS _____

WERE TRACERS USED Yes No TYPE OF TRACER(S) USED _____

API 47- 095 - 02092

Farm name Lisby, Donald J. and Judith

Well number T1-03-1

PERFORATION RECORD

Stage No.	Perforation date	Perforated from MD ft.	Perforated to MD ft.	Number of Perforations	Formation(s)
1	10/21/13	11974	12160	96	Marcellus
2	12/14/13	11749	11924	72	Marcellus
3	12/15/13	11554	11695	72	Marcellus
4	12/16/13	11272	11484	72	Marcellus
5	12/16/13	11049	11214	72	Marcellus
6	12/17/13	10780	10966	72	Marcellus
7	12/17/13	10526	10738	72	Marcellus
8	12/19/13	10218	10466	72	Marcellus
9	12/26/13	10035	10172	72	Marcellus
10	12/26/13	9732	9948	72	Marcellus
11	12/26/13	9516	9687	72	Marcellus
12	12/28/13	9234	9460	72	Marcellus
13	12/28/13	9018	9196	72	Marcellus
14	12/29/13	8761	8964	72	Marcellus
15	12/29/13	8549	8700	72	Marcellus
16	2/11/14	8328	8482	72	Marcellus

Please insert additional pages as applicable.

Received
Office of Oil & Gas
DEC 14 2015

STIMULATION INFORMATION PER STAGE

Complete a separate record for each stimulation stage.

Stage No.	Stimulations Date	Ave Pump Rate (BPM)	Ave Treatment Pressure (PSI)	Max Breakdown Pressure (PSI)	ISIP (PSI)	Amount of Proppant (lbs)	Amount of Water (bbls)	Amount of Nitrogen/other (units)
1	12/14/13	75	7102	7774	4778	183,554	7045	N/A
2	12/15/13	72	6930	7930	5385	181,350	6813	N/A
3	12/15/13	69	7004	8189	3870	182,736	7074	N/A
4	12/15/13	70	6629	7556	4261	181,621	7163	N/A
5	12/18/13	70	6652	7193	3619	183,428	6904	N/A
6	12/19/13	70	6784	7972	4076	171,439	7469	N/A
7	12/20/13	69	6802	7492	3097	166,156	6701	N/A
8	12/21/13	70	6721	7406	3922	178,285	6696	N/A
9	12/27/13	70	6902	8092	5316	179,715	6918	N/A
10	12/28/13	72	6712	7866	4241	179,893	6668	N/A
11	12/28/13	70	6704	7957	4369	181,144	6536	N/A
12	12/29/13	71	6633	8232	3859	179,102	6867	N/A
13	12/30/13	70	6490	6869	4501	179,831	6374	N/A
14	12/30/13	71	6730	8020	4987	180,326	6889	N/A
15	1/2/14	72	6730	8289	4610	172,906	9142	N/A
16	2/13/14	70	6441	7532	4527	175,000	7236	N/A

Please insert additional pages as applicable.

API 47- 095 - 02092 Farm name Lisby, Donald J. and Judith Well number T1-03-1

PERFORATION RECORD

Stage No.	Perforation date	Perforated from MD ft.	Perforated to MD ft.	Number of Perforations	Formation(s)
17	2/12/14	8172	8282	72	Marcellus
18	2/15/14	7772	8123	72	Marcellus
19	2/20/14	7561	7703	72	Marcellus
20	2/22/14	7303	7494	72	Marcellus
21	2/23/14	7040	7240	72	Marcellus
22	2/23/14	6836	7010	72	Marcellus

Please insert additional pages as applicable.

STIMULATION INFORMATION PER STAGE

Complete a separate record for each stimulation stage.

Stage No.	Stimulations Date	Ave Pump Rate (BPM)	Ave Treatment Pressure (PSI)	Max Breakdown Pressure (PSI)	ISIP (PSI)	Amount of Proppant (lbs)	Amount of Water (bbls)	Amount of Nitrogen/other (units)
17	2/13/14	71.6	6329	7008	4613	177,500	7617	N/A
18	2/17/14	69.9	6578	7460	5123	180,000	7940	N/A
19	2/21/14	68.5	6704	7529	4779	175,700	6904	N/A
20	2/25/14	70.3	6425	7333	5282	177,200	8017	N/A
21	2/25/14	69.9	6161	6644	4440	179,800	6565	N/A
22	2/25/14	70.1	6432	7002	5112	182,200	5633	N/A

Received
Office of Oil & Gas
DEC 14 2015

Please insert additional pages as applicable.

API 47-095-02092 Farm name Lisby, Donald J. and Judith Well number T1-03-1

<u>PRODUCING FORMATION(S)</u>	<u>DEPTHS</u>	
<u>Marcellus</u>	<u>6,412'</u> TVD	<u>12214'</u> MD
_____	_____	_____
_____	_____	_____
_____	_____	_____

Please insert additional pages as applicable.

GAS TEST Build up Drawdown Open Flow OIL TEST Flow Pump

SHUT-IN PRESSURE Surface 2100 psi Bottom Hole N/A psi DURATION OF TEST 24 hrs

OPEN FLOW Gas 4,800 mcfpd Oil N/A bpd NGL 70 bpd Water 71 bpd GAS MEASURED BY Estimated Orifice Pilot

LITHOLOGY/ FORMATION	TOP	BOTTOM	TOP	BOTTOM	DESCRIBE ROCK TYPE AND RECORD QUANTITY AND TYPE OF FLUID (FRESHWATER, BRINE, OIL, GAS, H ₂ S, ETC)
	DEPTH IN FT NAME TVD	DEPTH IN FT TVD	DEPTH IN FT MD	DEPTH IN FT MD	
See Attached.	0		0		
Injun	1699	1799	1699	1799	
Gordon	2402	2422	2402	2422	
Upper Marcellus	6274	6306	6183	6210	
Parcell Lime	6306	6328	6210	6225	

Received
Office of Oil & Gas
DEC 14 2015

Please insert additional pages as applicable.

Drilling Contractor HWD
Address 2915 Oklahoma 74 City Purcell State OK Zip 73080

Logging Company Precise
Address 1426 Barth Rd. City Belpre State OH Zip 45714

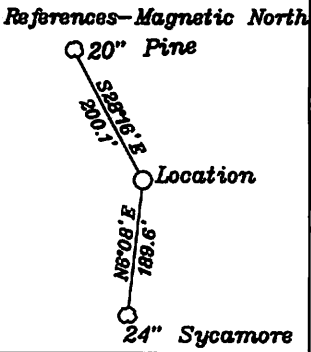
Cementing Company Nabors
Address PO Box 975682 City Dallas State TX Zip 75397-5682

Stimulating Company Baker Hughes
Address 837 Philippi Pike City Clarksburg State WV Zip 26301

Please insert additional pages as applicable.

Completed by Shane Dowell Telephone 304-628-3111
Signature  Title Office Manager Date 8-15-2015

Submittal of Hydraulic Fracturing Chemical Disclosure Information Attach copy of FRACFOCUS Registry



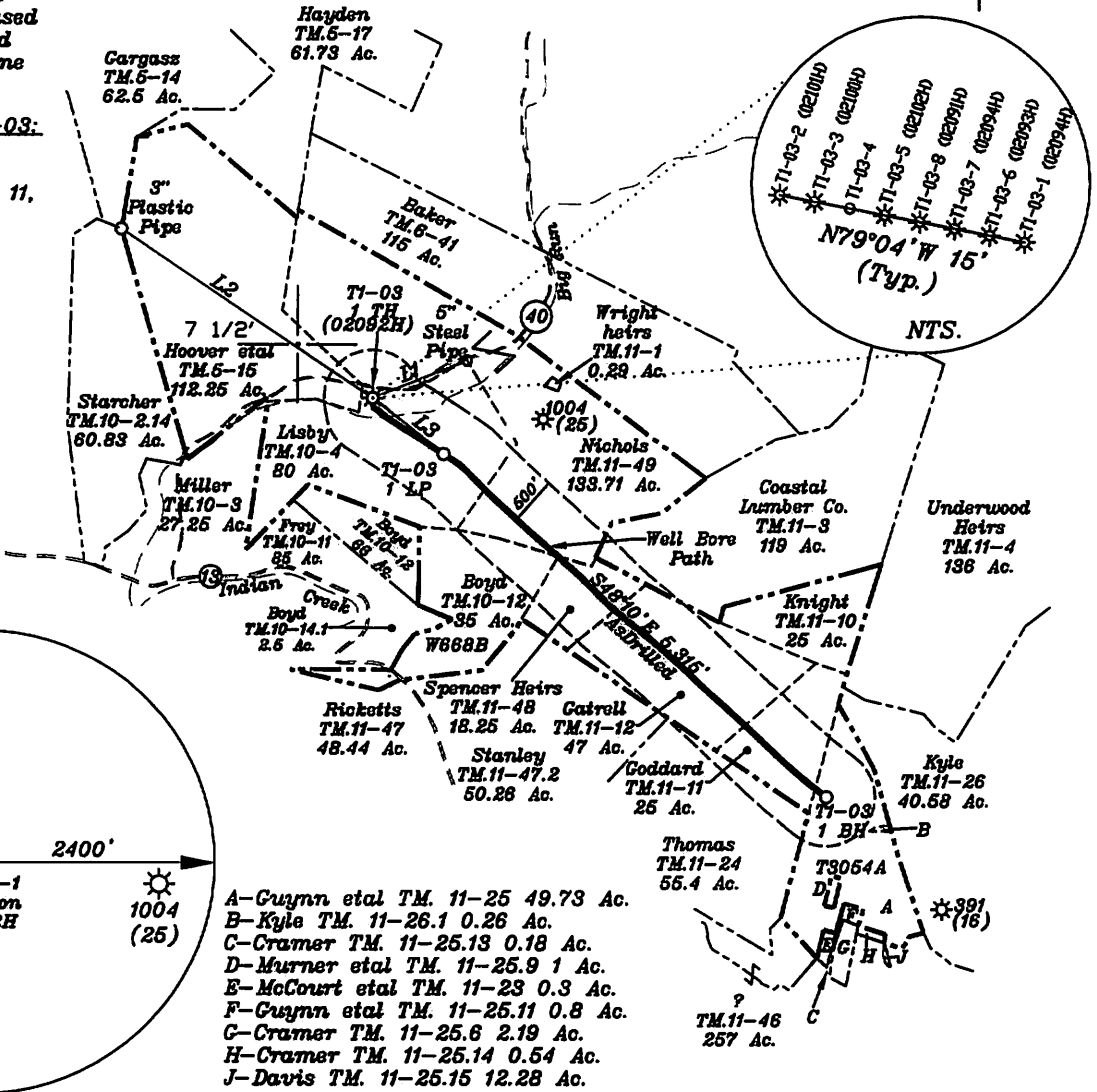
Top Hole		
Geographic NAD 83-39.448643, 80.801617		
UTM NAD83(meters)-4366583.71 N, 517089.31 E		
UTM NAD83(feet)-14326033.38 N, 1696418.24 E		
LPI-Landing Point 1		
Geographic NAD 83-39.447073, 80.798989		
UTM NAD83(meters)-4366409.91 N, 517295.87 E		
UTM NAD83(feet)-14325463.17 N, 1697161.53 E		
Bottom Hole		
Geographic NAD 83-39.437498, 80.784784		
UTM NAD83(meters)-4365350.15 N, 518520.61 E		
UTM NAD83(feet)-14321986.28 N, 1701179.70 E		

NUMBER	DIRECTION	DISTANCE
L1	S68°07'W	1052'
L2	S56°03'E	3113'
L3	S51°33'E	937'

Notes: Ties to wells and corners are based on State Plane Grid North-WV North Zone NAD 83.

Lease Number T1-03:
TM. 5 Parcel 15
TM. 10 Parcel 4
TM. 11 Parcels 10, 11, 12, 48, and 49

NORTH



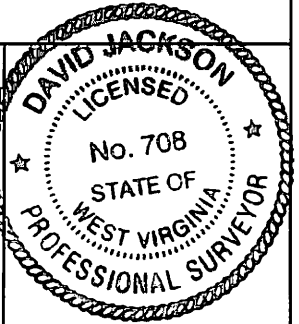
Top Hole 3530'
Longitude 80-47-30 N (TH)
Longitude 80-45-00 N (BH)
Bottom Hole 7,589'

(+) DENOTES LOCATION OF WELL ON UNITED STATES TOPOGRAPHIC MAPS

FILE NO. _____
DRAWING NO. 1
SCALE 1" = 2000'
MINIMUM DEGREE OF ACCURACY 1 in 200
PROVEN SOURCE OF ELEVATION GPS
submeter unit

I THE UNDERSIGNED, HEREBY CERTIFY THAT THIS PLAT IS CORRECT TO THE BEST OF MY KNOWLEDGE AND BELIEF AND SHOWS ALL THE INFORMATION REQUIRED BY LAW AND THE RULES ISSUED AND PRESCRIBED BY THE DEPARTMENT OF ENVIRONMENTAL PROJECTION.

(SIGNED) David Jackson
R.P.E. _____ P.I.S. 708



STATE OF WEST VIRGINIA
Division of Environmental Protection
OFFICE OF OIL AND GAS

DATE October 15, 2015
OPERATOR'S WELL NO. T1-03-1
API WELL NO. AsDrilled

WELL TYPE: OIL GAS LIQUID INJECTION WASTE DISPOSAL STATE 47 COUNTY 095 PERMIT 02092H
(IF 'GAS') PRODUCTION STORAGE DEEP SHALLOW
LOCATION: ELEVATION 723.1' WATER SHED Big Run
DISTRICT McElroy COUNTY Tyler
QUADRANGLE Shirley 7 1/2'
SURFACE OWNER Donald J. Lisby and Judith A. Lisby ACREAGE 80 ac.
OIL & GAS ROYALTY OWNER J.E. Spence LEASE ACREAGE 639 ac
LEASE NO. T1-03 (TM. 10-4, 11-49, 11-48, 11-12, & 11-11)

02/19/2016

PROPOSED WORK: DRILL CONVERT DRILL DEEPER REDRILL FRACTURE OR STIMULATE PLUG OFF OLD FORMATION PERFORATE NEW FORMATION OTHER PHYSICAL CHANGE IN WELL (SPECIFY) AsDrilled
PLUG AND ABANDON CLEAN OUT AND REPLUG
TARGET FORMATION Marcellus ESTIMATED DEPTH TVD 6,900' + Horizontal Leg - TMD 17,000'
WELL OPERATOR Jay Bee Oil & Gas, Inc. DESIGNATED AGENT Randy Broda
ADDRESS 1720 Rt. 22, East Union, NJ 07083 ADDRESS Route 1, Box 5, Cairo, WV 26337

Hydraulic Fracturing Fluid Product Component Information Disclosure

Job Start Date:	12/14/2013
Job End Date:	1/2/2014
State:	West Virginia
County:	Tyler
API Number:	47-095-02092-00-00
Operator Name:	Jay-Bee Oil & Gas, Inc.
Well Name and Number:	T1-03-1 (Stages 1 thru 15)
Longitude:	-80.80178600
Latitude:	39.44856100
Datum:	NAD27
Federal/Tribal Well:	NO
True Vertical Depth:	6,412
Total Base Water Volume (gal):	4,502,736
Total Base Non Water Volume:	0



Hydraulic Fracturing Fluid Composition:

Trade Name	Supplier	Purpose	Ingredients	Chemical Abstract Service Number (CAS #)	Maximum Ingredient Concentration in Additive (% by mass)**	Maximum Ingredient Concentration in HF Fluid (% by mass)**	Comments
Water	Operator	Carrier					
			Water	7732-18-5	100.00000	92.57140	
Sand, White, 100 mesh	Baker Hughes	Proppant					
			MSDS and Non-MSDS Ingredients Listed Below	N/A	Off:	2.96401	
Sand, White, 30/50	Baker Hughes	Proppant					
			MSDS and Non-MSDS Ingredients Listed Below	N/A	DEC 14 2015	2.91371	
Sand, White, 20/40	Baker Hughes	Proppant					
			MSDS and Non-MSDS Ingredients Listed Below	N/A		0.73572	
HCl, 10.1 - 15%	Baker Hughes	Acidizing					
			MSDS and Non-MSDS Ingredients Listed Below	N/A		0.66312	SmartCare Product
FRW-18	Baker Hughes	Friction Reducer					
			MSDS and Non-MSDS Ingredients Listed Below	N/A		0.06307	SmartCare Product
Scaletrol 720	Baker Hughes	Scale Inhibitor					
			MSDS and Non-MSDS Ingredients Listed Below	N/A		0.02633	SmartCare Product
Alpha 1427	Baker Hughes	Biocide					
			MSDS and Non-MSDS Ingredients Listed Below	N/A		0.02288	SmartCare Product

InFlo 250G, 330 gl tote	Baker Hughes	Surfactant					
			MSDS and Non-MSDS Ingredients Listed Below	N/A		0.00580	
Ferrotrol 300L	Baker Hughes	Iron Control					
			MSDS and Non-MSDS Ingredients Listed Below	N/A		0.00466	SmartCare Product
GW-3LDF	Baker Hughes	Gelling Agent					
			MSDS and Non-MSDS Ingredients Listed Below	N/A		0.00441	SmartCare Product
CI-14	Baker Hughes	Corrosion Inhibitor					
			MSDS and Non-MSDS Ingredients Listed Below	N/A		0.00215	SmartCare Product
Enzyme G-NE	Baker Hughes	Breaker					
			MSDS and Non-MSDS Ingredients Listed Below	N/A		0.00056	SmartCare Product
Ingredients shown above are subject to 29 CFR 1910.1200(i) and appear on Material Safety Data Sheets (MSDS). Ingredients shown below are Non-MSDS.							
Ingredients in Additive (s) (MSDS and non- MSDS)	Baker Hughes	See Trade Name(s) List					
			Crystalline Silica (Quartz)	14808-60-7	100.00000	6.61187	
			Water	7732-18-5	95.00000	0.62286	
			Hydrochloric Acid	7647-01-0	15.00000	0.09947	
			Poly (acrylamide-co-acrylic acid) partial sodium salt	62649-23-4	30.00000	0.01892	
			Hydrotreated Light Distillate	64742-47-8	30.00000	0.01892	
			Ethylene Glycol	107-21-1	45.00000	0.01185	
			Glutaraldehyde	111-30-8	30.00000	0.00686	
			2-Propenoic, Polymer with Sodium Phosphinate, Sodium Salt	71050-62-9	20.00000	0.00526	
			Sodium Chloride	7647-14-5	5.00000	0.00342	
			Methanol	67-56-1	100.00000	0.00330	
			Mineral Oil	8042-47-5	70.00000	0.00309	
			Citric Acid	77-92-9	60.00000	0.00280	
			Guar Gum	9000-30-0	60.00000	0.00265	
			Didecyl Dimethyl Ammonium Chloride	7173-51-5	10.00000	0.00229	
			Ammonium Chloride	12125-02-9	3.00000	0.00189	
			Surfactant	9016-45-9	15.00000	0.00157	
			Paraffinic Petroleum Distillate	64742-55-8	30.00000	0.00132	
			Petroleum Distillates	64742-47-8	30.00000	0.00132	
			Calcium Chloride	10043-52-4	5.00000	0.00132	
			Alcohols, C12-16, ethoxylated	68551-12-2	2.00000	0.00126	
			Oleamide DEA	93-83-4	2.00000	0.00126	
			Ethanol	64-17-5	5.00000	0.00114	
			Quaternary Ammonium Compound	68424-85-1	5.00000	0.00114	
			Polyoxyalkylenes	68951-67-7	30.00000	0.00064	
			Polyoxyethylene Sorbitan Monooleate	9005-65-6	0.50000	0.00032	
			Sorbitan Monooleate	1338-43-8	0.50000	0.00032	

Received
 Office of Oil & Gas
 DEC 14 2015

		Potassium Chloride	7447-40-7	1.00000	0.00026
		Isotridecanol, ethoxylated	9043-30-5	5.00000	0.00022
		Crystalline Silica: Quartz	14808-60-7	5.00000	0.00022
		1-butoxy-2-propanol	5131-66-8	5.00000	0.00022
		Fatty Acids	61790-12-3	10.00000	0.00021
		Modified Thiourea Polymer	68527-49-1	7.00000	0.00015
		Propargyl Alcohol	107-19-7	5.00000	0.00011
		Olefin	64743-02-8	5.00000	0.00011
		Hemicellulase Enzyme Concentrate	9025-56-3	5.00000	0.00003
		Formaldehyde	50-00-0	1.00000	0.00002
		2-butoxy-1-propanol	15821-83-7	0.10000	0.00000

* Total Water Volume sources may include fresh water, produced water, and/or recycled water

** Information is based on the maximum potential for concentration and thus the total may be over 100%

Note: For Field Development Products (products that begin with FDP), MSDS level only information has been provided.

Ingredient information for chemicals subject to 29 CFR 1910.1200(i) and Appendix D are obtained from suppliers Material Safety Data Sheets (MSDS)

Received
Office of Oil & Gas

DEC 14 2015

Hydraulic Fracturing Fluid Product Component Information Disclosure

Job Start Date:	10/21/2013
Job End Date:	3/18/2014
State:	West Virginia
County:	Tyler
API Number:	47-095-02092-00-00
Operator Name:	Jay-Bee Oil & Gas, Inc.
Well Name and Number:	T1-03-1 (Stages 16 thru 22)
Longitude:	-80.80178600
Latitude:	39.44856100
Datum:	NAD27
Federal/Tribal Well:	NO
True Vertical Depth:	6,412
Total Base Water Volume (gal):	2,036,832
Total Base Non Water Volume:	



Hydraulic Fracturing Fluid Composition:

Trade Name	Supplier	Purpose	Ingredients	Chemical Abstract Service Number (CAS #)	Maximum Ingredient Concentration in Additive (% by mass)**	Maximum Ingredient Concentration in HF Fluid (% by mass)**	Comments
Water	Jay-Bee Oil & Gas, Inc.	Water	Water	7732-18-5	100.00000	92.50424	
30/50 Mesh	FTS International, LLC	Frac Sand	Crystalline Silica	14808-60-7	99.90000	2.97628	
			Aluminum Oxide	1344-28-1	1.10000	0.03307	
			Iron Oxide	1309-37-1	0.10000	0.00301	
			Titanium Oxide	13463-67-7	0.10000	0.00301	
100 Mesh	FTS International, LLC	Frac Sand	Crystalline Silica	14808-60-7	99.00000	2.97455	
			Aluminum Oxide	1344-28-1	1.10000	0.03305	
			Titanium Oxide	13463-67-7	0.10000	0.00300	
			Iron Oxide	1309-37-1	0.10000	0.00300	
20/40 Mesh	FTS International, LLC	Frac Sand	Crystalline Silica	14808-60-7	99.90000	0.72060	
			Aluminum Oxide	1344-28-1	1.10000	0.00801	
			Iron Oxide	1309-37-1	0.10000	0.00073	
			Titanium Oxide	13463-67-7	0.10000	0.00073	
10.1-15% HCL	FTS International, LLC	Acid	Hydrochloric Acid	7647-01-0	15.00000	0.09537	

Office of Oil & Gas
 Received
 DEC 14 2015

CI-3240	FTS International, LLC	Biocide					
			Dazomet	533-74-4	24.00000	0.00610	
			Sodium Hydroxide	1310-73-2	4.00000	0.00102	
FRW-600	FTS International, LLC	Friction Reducer					
			Ammonium acetate	631-61-8	6.00000	0.00381	
CS-500 SI	FTS International, LLC	Scale Inhibitor					
			Ethylene Glycol	107-21-1	10.00000	0.00254	
CI-150	FTS International, LLC	Corrosion Inhibitor					
			Ethylene Glycol	107-21-1	30.00000	0.00038	
			Isopropanol	67-63-0	30.00000	0.00038	
			Dimethylformamide	68-12-2	10.00000	0.00013	
NE-100	FTS International, LLC	Non-Emulsifier					
			2-Propanol	67-63-0	10.00000	0.00006	
			Dodecylbenzenesulfonic acid	27176-87-0	5.00000	0.00003	
Ingredients shown above are subject to 29 CFR 1910.1200(i) and appear on Material Safety Data Sheets (MSDS). Ingredients shown below are Non-MSDS.							
10.1-15% HCL	FTS International, LLC	Acid					
			Water	7732-18-5	85.00000	0.54045	
FRW-600	FTS International, LLC	Friction Reducer					
			Water	7732-18-5	64.00000	0.04069	
			Hydrotreated light distillate	64742-47-8	30.00000	0.01907	
CS-500 SI	FTS International, LLC	Scale Inhibitor					
			Water	7732-18-5	90.00000	0.02289	
CI-3240	FTS International, LLC	Biocide					
			Water	7732-18-5	72.00000	0.01831	
HVG-1	FTS International, LLC	Gel					
			Petroleum Distillate	64742-47-8	55.00000	0.00105	
			Guar Gum	9000-30-0	50.00000	0.00095	
			Surfactant	68439-51-0	2.00000	0.00004	
			Clay	14808-60-7	2.00000	0.00004	
FE 100L	FTS International, LLC	Iron Control					
			Citric Acid	77-92-9	55.00000	0.00105	
			Water	7732-18-5	45.00000	0.00086	
LEB-300	FTS International, LLC	Breaker					
			Proprietary	Proprietary	100.00000	0.00095	
CI-150	FTS International, LLC	Corrosion Inhibitor					
			Organic amine resin salt	Proprietary	30.00000	0.00038	
			Aromatic aldehyde	Proprietary	10.00000	0.00013	
			Quaternary ammonium compound	Proprietary	10.00000	0.00013	
NE-100	FTS International, LLC	Non-Emulsifier					
			Water	7732-18-5	75.00000	0.00048	
			2-Butoxyethanol	111-76-2	10.00000	0.00006	

Received
Office of Oil & Gas
DEC 14 2015

- * Total Water Volume sources may include fresh water, produced water, and/or recycled water
- ** Information is based on the maximum potential for concentration and thus the total may be over 100%

Note: For Field Development Products (products that begin with FDP), MSDS level only information has been provided.
Ingredient information for chemicals subject to 29 CFR 1910.1200(l) and Appendix D are obtained from suppliers Material Safety Data Sheets (MSDS)