

State of West Virginia
Department of Environmental Protection - Office of Oil and Gas
Well Operator's Report of Well Work

API 47-095-02093 County Tyler District McElroy
Quad Shirley 7 1/2' Pad Name T1-03 Field/Pool Name _____
Farm name Lisby, Donald J. and Judith Well Number T1-03-6
Operator (as registered with the OOG) Jay-Bee Oil & Gas, Inc.
Address 3570 Shields Hill Rd. City Cairo State WV Zip 26170

As Drilled location NAD 83/UTM Attach an as-drilled plat, profile view, and deviation survey
Top hole Northing 517,065.3 Easting 4,366,584.4
Landing Point of Curve Northing 517,163.7 Easting 4,366,797.8
Bottom Hole Northing 515,854 Easting 4,368,499

Elevation (ft) 722.85' GL Type of Well New Existing Type of Report Interim Final
Permit Type Deviated Horizontal Horizontal 6A Vertical Depth Type Deep Shallow
Type of Operation Convert Deepen Drill Plug Back Redrilling Rework Stimulate
Well Type Brine Disposal CBM Gas Oil Secondary Recovery Solution Mining Storage Other _____
Type of Completion Single Multiple Fluids Produced Brine Gas NGL Oil Other _____
Drilled with Cable Rotary

Drilling Media Surface hole Air Mud Fresh Water Intermediate hole Air Mud Fresh Water Brine
Production hole Air Mud Fresh Water Brine
Mud Type(s) and Additive(s) Enviromul

Received
Office of Oil & Gas
DEC 14 2015

Date permit issued 5/24/2013 Date drilling commenced 7/8/2013 Date drilling ceased 9/22/2013
Date completion activities began 10/21/2013 Date completion activities ceased 3/25/2014
Verbal plugging (Y/N) N Date permission granted N/A Granted by N/A

Please note: Operator is required to submit a plugging application within 5 days of verbal permission to plug

Freshwater depth(s) ft 65-90' Open mine(s) (Y/N) depths N
Salt water depth(s) ft N/A Void(s) encountered (Y/N) depths N
Coal depth(s) ft N/A Cavern(s) encountered (Y/N) depths N
Is coal being mined in area (Y/N) N

Reviewed by:
DHJ
WS AX 02/15/16
02/19/2016

WR-35
Rev. 8/23/13

API 47- 095 - 02093 Farm name Lisby, Donald J. and Judith Well number T1-03-6

CASING STRINGS	Hole Size	Casing Size	Depth	New or Used	Grade wt/ft	Basket Depth(s)	Did cement circulate (Y/ N) * Provide details below*
Conductor	17"	16"	60'	New	20/32/24		Y
Surface	15"	11 3/4"	344'	New	20/23/24	50'	Y
Coal							
Intermediate 1	11"	8 5/8"	2,039'	New	20/17/24	1500'	Y
Intermediate 2							
Intermediate 3							
Production	7 7/8"	5 1/2"	14,085'	New	17/20		Y
Tubing							
Packer type and depth set							

Comment Details _____

CEMENT DATA	Class/Type of Cement	Number of Sacks	Slurry wt (ppg)	Yield (ft ³ /sks)	Volume (ft ³)	Cement Top (MD)	WOC (hrs)
Conductor							
Surface	Class A	205	15.2	1.26	258	CTS	88
Coal							
Intermediate 1	Class A	365	14.5	1.40	511	CTS	88
Intermediate 2							
Intermediate 3							
Production	Class A	1,799	14.3	1.35	2,429	300' from surface	88
Tubing							

Drillers TD (ft) 14,085' Loggers TD (ft) 14,085'
 Deepest formation penetrated Marcellus Plug back to (ft) N/A
 Plug back procedure N/A

Received
Office of Oil & Gas
DEC 14 2015

Kick off depth (ft) 5,723'

Check all wireline logs run caliper density deviated/directional induction
 neutron resistivity gamma ray temperature sonic

Well cored Yes No Conventional Sidewall Were cuttings collected Yes No

DESCRIBE THE CENTRALIZER PLACEMENT USED FOR EACH CASING STRING Spiral centralizer every joint from TD back to start of
90 degree.
90 - 70 degree every second joint.
70 degree - KOP every third joint.
KOP - Surface centralizer placed every 500'.

WAS WELL COMPLETED AS SHOT HOLE Yes No DETAILS _____

WAS WELL COMPLETED OPEN HOLE? Yes No DETAILS _____

WERE TRACERS USED Yes No TYPE OF TRACER(S) USED _____

API 47-095 . 02093

Farm name Lisby, Donald J. and Judith

Well number T1-03-6

PERFORATION RECORD

Stage No.	Perforation date	Perforated from MD ft.	Perforated to MD ft.	Number of Perforations	Formation(s)
1	10/21/13	13894'	14073'	96	Marcellus
2	12/10/13	13626'	13859'	72	Marcellus
3	12/11/13	13354'	13591'	72	Marcellus
4	12/13/13	13060'	13319'	72	Marcellus
5	12/13/13	12763'	13025'	72	Marcellus
6	12/14/13	12488'	12728'	72	Marcellus
7	12/15/13	12266'	12453'	72	Marcellus
8	12/17/13	11966'	12231'	72	Marcellus
9	12/20/13	11670'	11931'	72	Marcellus
10	12/26/13	11432'	11612'	72	Marcellus
11	12/26/13	11184'	11397'	72	Marcellus
12	12/27/13	10862'	11149'	72	Marcellus
13	12/28/13	10580'	10827'	72	Marcellus
14	12/29/13	10316'	10545'	72	Marcellus
15	12/29/13	10092'	10262'	72	Marcellus
16	12/30/13	9866'	10057'	72	Marcellus

Please insert additional pages as applicable.

Received
Office of Oil & Gas
DEC 14 2015

STIMULATION INFORMATION PER STAGE

Complete a separate record for each stimulation stage.

Stage No.	Stimulations Date	Ave Pump Rate (BPM)	Ave Treatment Pressure (PSI)	Max Breakdown Pressure (PSI)	ISIP (PSI)	Amount of Proppant (lbs)	Amount of Water (bbls)	Amount of Nitrogen/other (units)
1	12/13/13	75	7069	8118	3993	178,619	7770	N/A
2	12/14/13	70	7324	8247	5160	156,691	7383	N/A
3	12/15/13	71	7407	7742	5454	143,637	6323	N/A
4	12/16/13	69	7135	8301	4508	146,988	6225	N/A
5	12/16/13	70	6923	7512	4296	180,942	7243	N/A
6	12/18/13	70	7124	7999	3064	189,185	7469	N/A
7	12/19/13	69	6916	7791	4886	156,568	7480	N/A
8	12/20/13	69	6839	8239	4121	164,562	7401	N/A
9	12/21/13	69	6933	8141	4839	143,789	6895	N/A
10	12/27/13	70	7147	8108	5164	126,057	6453	N/A
11	12/28/13	70	6755	7770	5048	176,532	7144	N/A
12	12/28/13	70	6840	7860	3497	179,705	6738	N/A
13	12/29/13	70	6746	8134	4207	179,645	6193	N/A
14	12/30/13	70	6666	7445	6731	178,602	6608	N/A
15	12/30/13	71	6764	8072	4402	179,024	6598	N/A
16	1/2/14	70	6921	8506	5277	168,027	6935	N/A

Please insert additional pages as applicable.

API 47-095 . 02093

Farm name Lisby, Donald J. and Judith

Well number T1-03-6

PERFORATION RECORD

Stage No.	Perforation date	Perforated from MD ft.	Perforated to MD ft.	Number of Perforations	Formation(s)
17	2/13/14	9568'	9800'	72	Marcellus
18	2/13/14	9258'	9533'	72	Marcellus
19	2/13/14	9024'	9198'	72	Marcellus
20	2/15/14	8764'	8989'	72	Marcellus
21	2/16/14	8515'	8726'	72	Marcellus
22	2/17/14	8176'	8480'	72	Marcellus
23	2/17/14	7888'	8141'	72	Marcellus
24	2/18/14	7622'	7853'	72	Marcellus
25	2/18/14	7192'	7587'	72	Marcellus
26	2/20/14	6782'	7157'	72	Marcellus

Received
Office of Oil & Gas
DEC 14 2015

Please insert additional pages as applicable.

STIMULATION INFORMATION PER STAGE

Complete a separate record for each stimulation stage.

Stage No.	Stimulations Date	Ave Pump Rate (BPM)	Ave Treatment Pressure (PSI)	Max Breakdown Pressure (PSI)	ISIP (PSI)	Amount of Proppant (lbs)	Amount of Water (bbls)	Amount of Nitrogen/other (units)
17	2/14/14	72.6	6503	7130	4866	169,000	7155	N/A
18	2/15/14	71.8	6238	7132	5277	183,000	10622	N/A
19	2/21/14	69.5	6800	7354	4858	187,000	7428	N/A
20	2/25/14	69.8	6709	7071	4919	180,190	6752	N/A
21	2/25/14	69.9	6412	6960	4707	150,500	5915	N/A
22	2/26/14	69.7	6219	6878	4806	134,100	5885	N/A
23	2/26/14	70	6488	7132	4962	180,700	6314	N/A
24	2/26/14	70.1	6329	7007	4818	182,050	6355	N/A
25	2/26/14	69.8	6152	6700	4814	176,200	6905	N/A
26	2/27/14	69.3	6324	6860	4864	172,500	6278	N/A

Please insert additional pages as applicable.

API 47- 095 02093 Farm name Lisby, Donald J. and Judith Well number T1-03-6

<u>PRODUCING FORMATION(S)</u>	<u>DEPTHS</u>		
<u>Marcellus</u>	<u>6,387'</u>	<u>TVD</u>	<u>14,085'</u> <u>MD</u>

Please insert additional pages as applicable.

GAS TEST Build up Drawdown Open Flow OIL TEST Flow Pump

SHUT-IN PRESSURE Surface 2,197 psi Bottom Hole N/A psi DURATION OF TEST 24 hrs

OPEN FLOW Gas 4,757 mcfpd Oil N/A bpd NGL 86 bpd Water 69 bpd GAS MEASURED BY Estimated Orifice Pilot

LITHOLOGY/ FORMATION	TOP	BOTTOM	TOP	BOTTOM	DESCRIBE ROCK TYPE AND RECORD QUANTITY AND TYPE OF FLUID (FRESHWATER, BRINE, OIL, GAS, H ₂ S, ETC)
	DEPTH IN FT NAME TVD	DEPTH IN FT TVD	DEPTH IN FT MD	DEPTH IN FT MD	
See Attached.	0		0		
Injun	1699	1799	1699	1799	
Gordon	2402	2422	2402	2422	
Upper Marcellus	6274	6306	6199	6229	
Parcell Lime	6306	6328	6229	6256	

Received
Office of Oil & Gas
DEC 14 2015

Please insert additional pages as applicable.

Drilling Contractor HWD
Address 2915 Oklahoma 74 City Purcell State OK Zip 73080

Logging Company Precise
Address 1426 Barth Rd. City Belpre State OH Zip 45714

Cementing Company Nabors
Address PO Box 975682 City Dallas State TX Zip 75397-5682

Stimulating Company Baker Hughes
Address 837 Philippi Pike City Clarksburg State Zip 26301

Please insert additional pages as applicable.

Completed by Shane Dowell Telephone 304-628-3111
Signature  Title Office Manager Date 8-15-2015

Submittal of Hydraulic Fracturing Chemical Disclosure Information Attach copy of FRACFOCUS Registry

Hydraulic Fracturing Fluid Product Component Information Disclosure

Job Start Date:	12/13/2013
Job End Date:	1/2/2014
State:	West Virginia
County:	Tyler
API Number:	47-095-02093-00-00
Operator Name:	Jay-Bee Oil & Gas, Inc.
Well Name and Number:	T1-03-6 (Stages 1 thru 16)
Longitude:	-80.80183900
Latitude:	39.44856800
Datum:	NAD27
Federal/Tribal Well:	NO
True Vertical Depth:	6,387
Total Base Water Volume (gal):	4,843,272
Total Base Non Water Volume:	0



Hydraulic Fracturing Fluid Composition:

Trade Name	Supplier	Purpose	Ingredients	Chemical Abstract Service Number (CAS #)	Maximum Ingredient Concentration in Additive (% by mass)**	Maximum Ingredient Concentration in HF Fluid (% by mass)**	Comments
Water	Operator	Carrier	Water	7732-18-5	100.00000	93.07278	
Sand, White, 100 mesh	Baker Hughes	Proppant	MSDS and Non-MSDS Ingredients Listed Below	N/A		2.94038	
Sand, White, 30/50	Baker Hughes	Proppant	MSDS and Non-MSDS Ingredients Listed Below	N/A		2.59553	
HCl, 10.1 - 15%	Baker Hughes	Acidizing	MSDS and Non-MSDS Ingredients Listed Below	N/A		0.66117	SmartCare Product
Sand, White, 20/40	Baker Hughes	Proppant	MSDS and Non-MSDS Ingredients Listed Below	N/A		0.57011	
FRW-18	Baker Hughes	Friction Reducer	MSDS and Non-MSDS Ingredients Listed Below	N/A		0.06835	SmartCare Product
Scaletrol 720	Baker Hughes	Scale Inhibitor	MSDS and Non-MSDS Ingredients Listed Below	N/A		0.02612	SmartCare Product
Alpha 1477	Baker Hughes	Biocide	MSDS and Non-MSDS Ingredients Listed Below	N/A		0.02225	SmartCare Product

Received
Office of Oil & Gas
DEC 14 2015

GW-3LDF	Baker Hughes	Gelling Agent	MSDS and Non-MSDS Ingredients Listed Below	N/A		0.00609	SmartCare Product
InFlo 250G, 330 gl tote	Baker Hughes	Surfactant	MSDS and Non-MSDS Ingredients Listed Below	N/A		0.00569	
Ferrotrol 300L	Baker Hughes	Iron Control	MSDS and Non-MSDS Ingredients Listed Below	N/A		0.00465	SmartCare Product
CI-14	Baker Hughes	Corrosion Inhibitor	MSDS and Non-MSDS Ingredients Listed Below	N/A		0.00214	SmartCare Product
Enzyme G-NE	Baker Hughes	Breaker	MSDS and Non-MSDS Ingredients Listed Below	N/A		0.00029	SmartCare Product
Ingredients shown above are subject to 29 CFR 1910.1200(i) and appear on Material Safety Data Sheets (MSDS). Ingredients shown below are Non-MSDS.							
Ingredients in Additive (s) (MSDS and non- MSDS)	Baker Hughes	See Trade Name(s) List					
			Crystalline Silica (Quartz)	14808-60-7	100.00000	6.10443	
			Water	7732-18-5	95.00000	0.62247	
			Hydrochloric Acid	7647-01-0	15.00000	0.09917	
			Poly (acrylamide-co-acrylic acid) partial sodium salt	52649-23-4	30.00000	0.02050	
			Hydrotreated Light Distillate	54742-47-8	30.00000	0.02050	
			Ethylene Glycol	107-21-1	45.00000	0.01175	
			Glutaraldehyde	111-30-8	30.00000	0.00667	
			2-Propenoic, Polymer with Sodium Phosphinate, Sodium Salt	71050-62-9	20.00000	0.00522	
			Mineral Oil	8042-47-5	70.00000	0.00426	
			Sodium Chloride	7647-14-5	5.00000	0.00368	
			Guar Gum	9000-30-0	60.00000	0.00365	
			Methanol	67-56-1	100.00000	0.00328	
			Citric Acid	77-92-9	60.00000	0.00279	
			Didecyl Dimethyl Ammonium Chloride	7173-51-5	10.00000	0.00222	
			Ammonium Chloride	12125-02-9	3.00000	0.00205	
			Petroleum Distillates	54742-47-8	30.00000	0.00183	
			Paraffinic Petroleum Distillate	54742-55-8	30.00000	0.00183	
			Surfactant	9016-45-9	15.00000	0.00154	
			Alcohols, C12-16, ethoxylated	68551-12-2	2.00000	0.00137	
			Oleamide DEA	93-83-4	2.00000	0.00137	
			Calcium Chloride	10043-52-4	5.00000	0.00131	
			Ethanol	64-17-5	5.00000	0.00111	
			Quaternary Ammonium Compound	58424-85-1	5.00000	0.00111	
			Polyoxyalkylenes	58951-67-7	30.00000	0.00064	
			Polyoxyethylene Sorbitan Monooleate	9005-65-6	0.50000	0.00034	
			Sorbitan Monooleate	1338-43-8	0.50000	0.00034	

Received
Office of O&E

DEC 14 2011

		Isotridecanol, ethoxylated	9043-30-5	5.00000	0.00030
		Crystalline Silica: Quartz	14808-60-7	5.00000	0.00030
		1-butoxy-2-propanol	5131-66-8	5.00000	0.00030
		Potassium Chloride	7447-40-7	1.00000	0.00026
		Fatty Acids	61790-12-3	10.00000	0.00021
		Modified Thiourea Polymer	68527-49-1	7.00000	0.00015
		Olefin	64743-02-8	5.00000	0.00011
		Propargyl Alcohol	107-19-7	5.00000	0.00011
		Formaldehyde	50-00-0	1.00000	0.00002
		Hemicellulase Enzyme Concentrate	9025-56-3	5.00000	0.00001
		2-butoxy-1-propanol	15821-83-7	0.10000	0.00001

* Total Water Volume sources may include fresh water, produced water, and/or recycled water

** Information is based on the maximum potential for concentration and thus the total may be over 100%

Note: For Field Development Products (products that begin with FDP), MSDS level only information has been provided.

Ingredient information for chemicals subject to 29 CFR 1910.1200(i) and Appendix D are obtained from suppliers Material Safety Data Sheets (MSDS)

Received
Office of Oil & Gas
DEC 14 2015

Hydraulic Fracturing Fluid Product Component Information Disclosure

Job Start Date:	10/21/2013
Job End Date:	2/20/2014
State:	West Virginia
County:	Tyler
API Number:	47-095-02093-00-00
Operator Name:	Jay-Bee Oil & Gas, Inc.
Well Name and Number:	T1-03-6 (Stages 17 thru 26)
Longitude:	-80.80183900
Latitude:	39.44856800
Datum:	NAD27
Federal/Tribal Well:	NO
True Vertical Depth:	6,387
Total Base Water Volume (gal):	2,926,140
Total Base Non Water Volume:	



Received
Office of Oil & Gas
DEC 14 2015

Hydraulic Fracturing Fluid Composition:

Trade Name	Supplier	Purpose	Ingredients	Chemical Abstract Service Number (CAS #)	Maximum Ingredient Concentration in Additive (% by mass)**	Maximum Ingredient Concentration in HF Fluid (% by mass)**	Comments
Water	Jay-Bee Oil & Gas, Inc.	Water	Water	7732-18-5	100.00000	92.88151	
100 Mesh	FTS International, LLC	Frac Sand	Crystalline Silica	14808-60-7	99.00000	3.00316	
			Aluminum Oxide	1344-28-1	1.10000	0.03337	
			Titanium Oxide	13463-67-7	0.10000	0.00303	
			Iron Oxide	1309-37-1	0.10000	0.00303	
30/50 Mesh	FTS International, LLC	Frac Sand	Crystalline Silica	14808-60-7	99.90000	2.72320	
			Aluminum Oxide	1344-28-1	1.10000	0.03026	
			Iron Oxide	1309-37-1	0.10000	0.00275	
			Titanium Oxide	13463-67-7	0.10000	0.00275	
20/40 Mesh	FTS International, LLC	Frac Sand	Crystalline Silica	14808-60-7	99.90000	0.57273	
			Aluminum Oxide	1344-28-1	1.10000	0.00636	
			Iron Oxide	1309-37-1	0.10000	0.00058	
			Titanium Oxide	13463-67-7	0.10000	0.00058	
10.1-15% HCL	FTS International, LLC	Acid	Hydrochloric Acid	7647-01-0	15.00000	0.09523	

CI-3240	FTS International, LLC	Biocide				
			Dazomet	533-74-4	24.00000	0.00609
			Sodium Hydroxide	1310-73-2	4.00000	0.00102
FRW-600	FTS International, LLC	Friction Reducer				
			Ammonium acetate	631-61-8	6.00000	0.00381
CS-500 SI	FTS International, LLC	Scale Inhibitor				
			Ethylene Glycol	107-21-1	10.00000	0.00254
CI-150	FTS International, LLC	Corrosion Inhibitor				
			Isopropanol	67-63-0	30.00000	0.00038
			Ethylene Glycol	107-21-1	30.00000	0.00038
			Dimethylformamide	68-12-2	10.00000	0.00013
NE-100	FTS International, LLC	Non-Emulsifier				
			2-Propanol	67-63-0	10.00000	0.00006
			Dodecylbenzenesulfonic acid	27176-87-0	5.00000	0.00003
Ingredients shown above are subject to 29 CFR 1910.1200(j) and appear on Material Safety Data Sheets (MSDS). Ingredients shown below are Non-MSDS.						
10.1-15% HCL	FTS International, LLC	Acid				
			Water	7732-18-5	85.00000	0.53961
FRW-600	FTS International, LLC	Friction Reducer				
			Water	7732-18-5	64.00000	0.04063
			Hydrotreated light distillate	64742-47-8	30.00000	0.01905
CS-500 SI	FTS International, LLC	Scale Inhibitor				
			Water	7732-18-5	90.00000	0.02285
CI-3240	FTS International, LLC	Biocide				
			Water	7732-18-5	72.00000	0.01828
HVG-1	FTS International, LLC	Gel				
			Petroleum Distillate	64742-47-8	55.00000	0.00105
			Guar Gum	9000-30-0	50.00000	0.00095
			Surfactant	68439-51-0	2.00000	0.00004
			Clay	14808-60-7	2.00000	0.00004
FE 100L	FTS International, LLC	Iron Control				
			Citric Acid	77-92-9	55.00000	0.00105
			Water	7732-18-5	45.00000	0.00086
LEB-300	FTS International, LLC	Breaker				
			Proprietary	Proprietary	100.00000	0.00095
CI-150	FTS International, LLC	Corrosion Inhibitor				
			Organic amine resin salt	Proprietary	30.00000	0.00038
			Quaternary ammonium compound	Proprietary	10.00000	0.00013
			Aromatic aldehyde	Proprietary	10.00000	0.00013
NE-100	FTS International, LLC	Non-Emulsifier				
			Water	7732-18-5	75.00000	0.00048
			2-Butoxyethanol	111-76-2	10.00000	0.00006

Received
Office of Oil & Gas
DEC 14 2015

* Total Water Volume sources may include fresh water, produced water, and/or recycled water
** Information is based on the maximum potential for concentration and thus the total may be over 100%

Note: For Field Development Products (products that begin with FDP), MSDS level only information has been provided.
Ingredient information for chemicals subject to 29 CFR 1910.1200(i) and Appendix D are obtained from suppliers Material Safety Data Sheets (MSDS)

received
Oil & Gas
4 2015

LATITUDE 39°27'30"

2,872

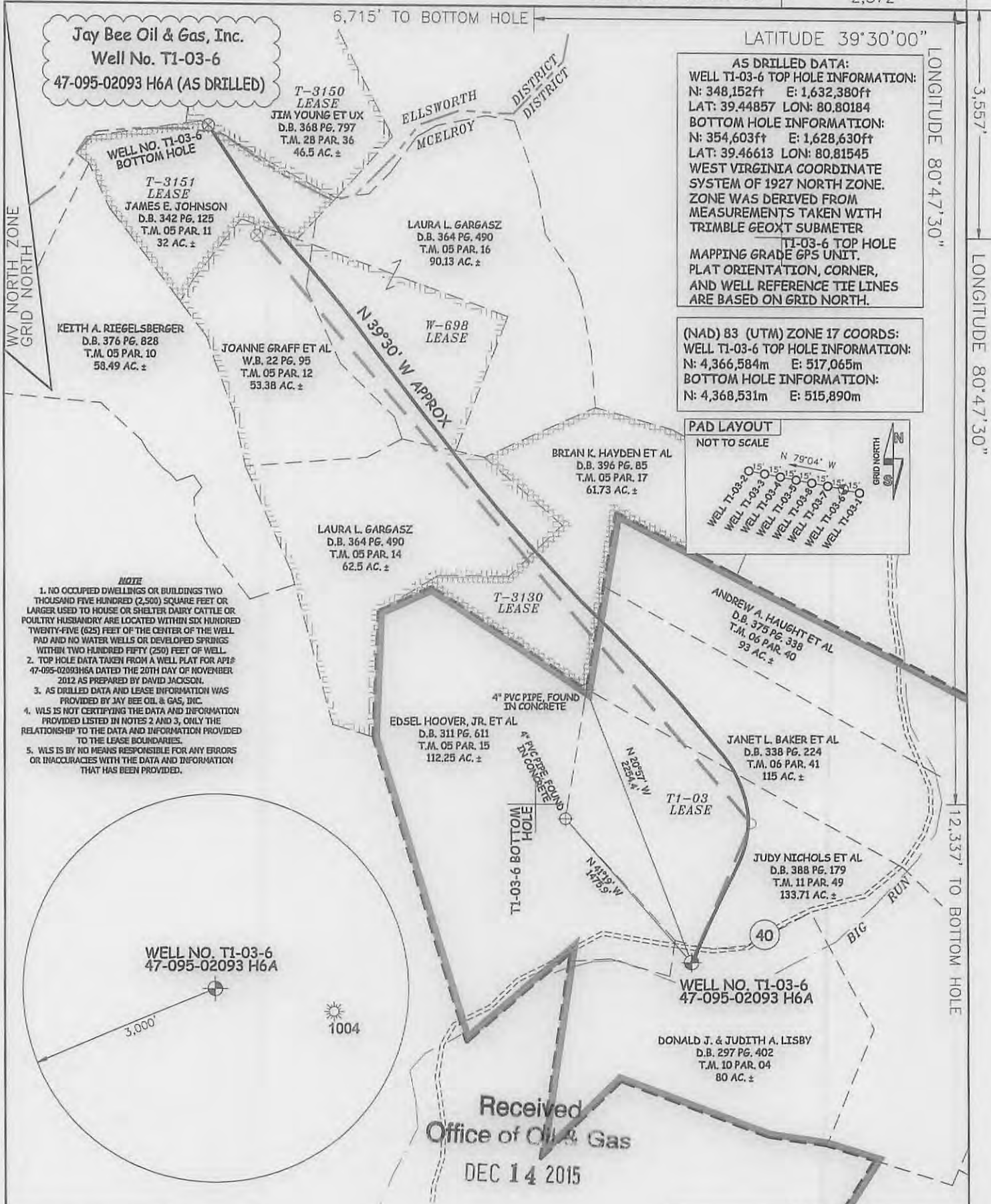
LATITUDE 39°30'00"

LONGITUDE 80°47'30"

LONGITUDE 80°47'30"

12,337' TO BOTTOM HOLE

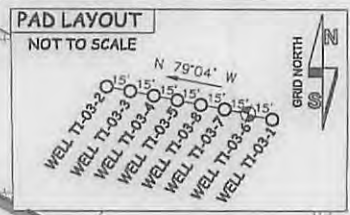
6,715' TO BOTTOM HOLE



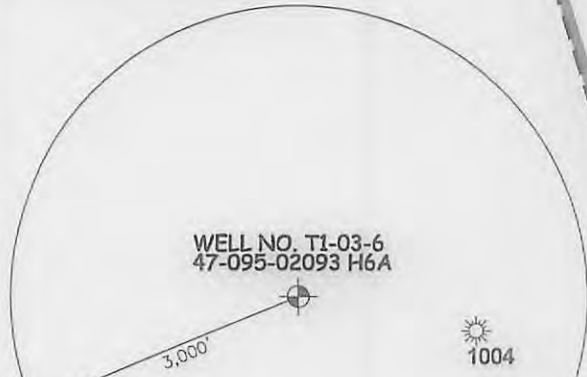
Jay Bee Oil & Gas, Inc.
Well No. T1-03-6
47-095-02093 H6A (AS DRILLED)

AS DRILLED DATA:
WELL T1-03-6 TOP HOLE INFORMATION:
N: 348,152ft E: 1,632,380ft
LAT: 39.44857 LON: 80.80184
BOTTOM HOLE INFORMATION:
N: 354,603ft E: 1,628,630ft
LAT: 39.46613 LON: 80.81545
WEST VIRGINIA COORDINATE SYSTEM OF 1927 NORTH ZONE. ZONE WAS DERIVED FROM MEASUREMENTS TAKEN WITH TRIMBLE GEOXT SUBMETER
T1-03-6 TOP HOLE MAPPING GRADE GPS UNIT. PLAT ORIENTATION, CORNER, AND WELL REFERENCE TIE LINES ARE BASED ON GRID NORTH.

(NAD) 83 (UTM) ZONE 17 COORDS:
WELL T1-03-6 TOP HOLE INFORMATION:
N: 4,366,584m E: 517,065m
BOTTOM HOLE INFORMATION:
N: 4,368,531m E: 515,890m



- NOTE**
1. NO OCCUPIED DWELLINGS OR BUILDINGS TWO THOUSAND FIVE HUNDRED (2,500) SQUARE FEET OR LARGER USED TO HOUSE OR SHELTER DAIRY CATTLE OR POULTRY HUSBANDRY ARE LOCATED WITHIN SIX HUNDRED TWENTY-FIVE (625) FEET OF THE CENTER OF THE WELL PAD AND NO WATER WELLS OR DEVELOPED SPRINGS WITHIN TWO HUNDRED FIFTY (250) FEET OF WELL.
 2. TOP HOLE DATA TAKEN FROM A WELL PLAT FOR API# 47-095-02093H6A DATED THE 20TH DAY OF NOVEMBER 2012 AS PREPARED BY DAVID JACKSON.
 3. AS DRILLED DATA AND LEASE INFORMATION WAS PROVIDED BY JAY BEE OIL & GAS, INC.
 4. WLS IS NOT CERTIFYING THE DATA AND INFORMATION PROVIDED LISTED IN NOTES 2 AND 3, ONLY THE RELATIONSHIP TO THE DATA AND INFORMATION PROVIDED TO THE LEASE BOUNDARIES.
 5. WLS IS BY NO MEANS RESPONSIBLE FOR ANY ERRORS OR INACCURACIES WITH THE DATA AND INFORMATION THAT HAS BEEN PROVIDED.



Received
Office of Oil & Gas
DEC 14 2015

JOB # JAYBEET1-03
DRAWING # T1-03-6AD
SCALE 1" = 1000'
MINIMUM DEGREE OF ACCURACY SUBMETER
PROVEN SOURCE OF ELEV. SUBMETER MAPPING GRADE GPS
STATE OF WEST VIRGINIA DEPARTMENT OF ENERGY DIVISION OF OIL AND GAS



STATE OF WEST VIRGINIA, DIVISION OF ENVIRONMENTAL PROTECTION, OFFICE OF OIL AND GAS
WILLOW LAND SURVEYING PLLC
220 MASONIC AVE. PENNSBORO WEST VIRGINIA 26415

LEGEND
--- Surface Owner Boundary Lines +/-
- - - Interior Surface Tracts +/-
⊕ Found monument, as noted
○ Proposed Well Path
⊗ As Drilled Well Path

DATE 12/04/15
OPERATOR'S WELL# T1-03-6

WELL TYPE: OIL GAS LIQUID INJECTION WASTE DISPOSAL 47 - 095 - 02093 H6A
(IF "GAS") PRODUCTION STORAGE DEEP SHALLOW STATE COUNTY PERMIT
LOCATION: ELEVATION 723.6' WATERSHED OUTLET MIDDLE ISLAND CREEK
QUADRANGLE SHIRLEY 7.5' DISTRICT MCELROY COUNTY TYLER
SURFACE OWNER DONALD J. & JUDITH A. LISBY ACREAGE 80 ACRES +/-
OIL & GAS ROYALTY OWNER T1-03; T-3130; W-698; T-3151 LEASE ACREAGE 639 ACRES±; 61.73 ACRES±; 143 ACRES±; 32 ACRES±
T-3150 46.5 ACRES±

PROPOSED WORK: DRILL CONVERT DRILL DEEPER REDRILL FRACTURE OR STIMULATE
PLUG OFF OLD FORMATION PERFORATE NEW FORMATION OTHER PHYSICAL CHANGE IN WELL
(SPECIFY) AS DRILLED PLUG & ABANDON CLEAN OUT & REPLUG
TARGET FORMATION MARCELLUS ESTIMATED DEPTH 6,396' TVD 14,085' MD
WELL OPERATOR JAY BEE OIL & GAS, INC. DESIGNATED AGENT RANDY BRODA
ADDRESS 1720 ROUTE 22 ADDRESS ROUTE 1, BOX 5
FORM WW-6 EAST UNION, NJ 07083 CAIRO, WV 26337

02/19/2016

COUNTY NAME

PERMIT

LATITUDE 39°27'30" 2,872

LATITUDE 39°30'00"

LONGITUDE 80°47'30"

LONGITUDE 80°47'30"

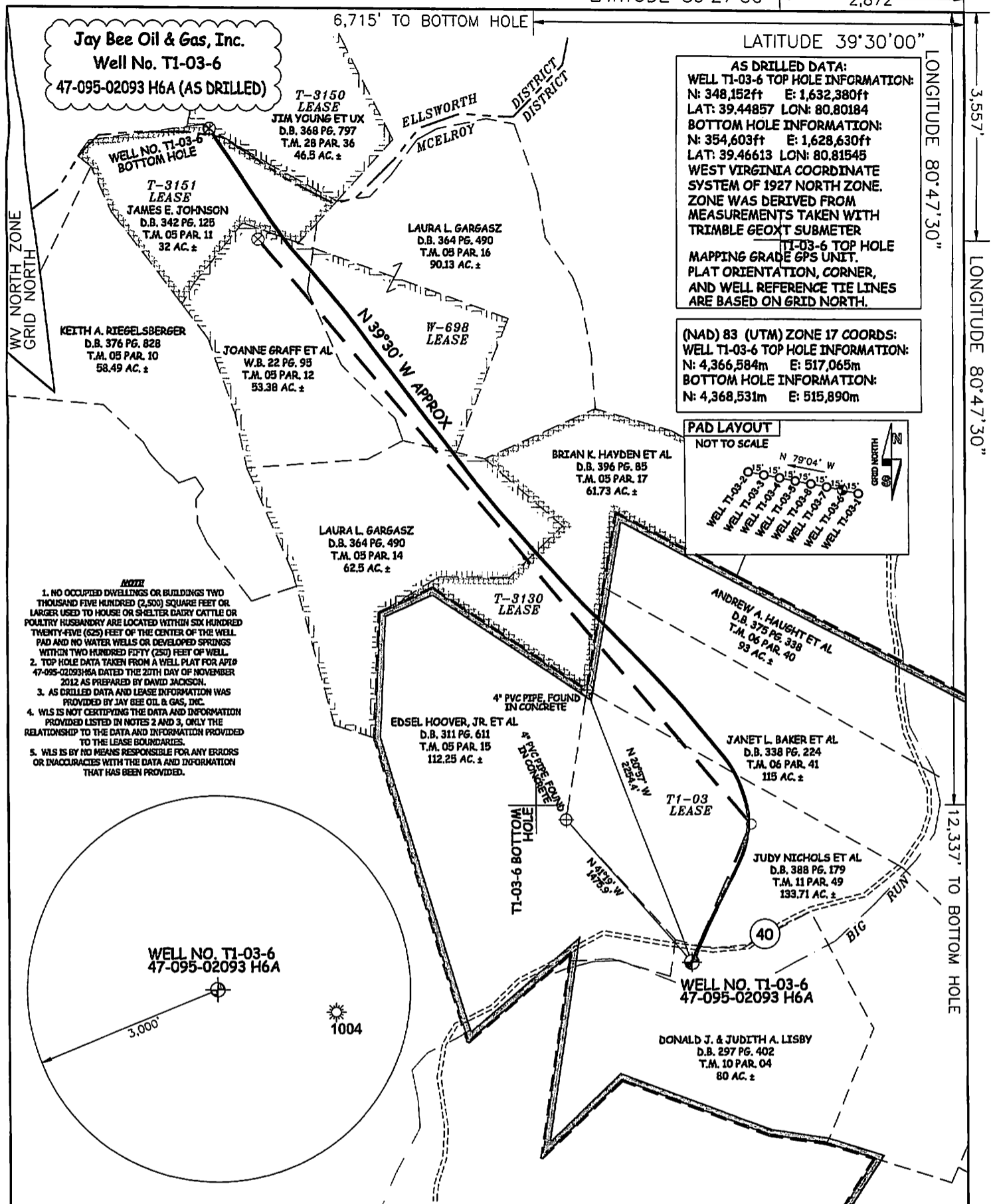
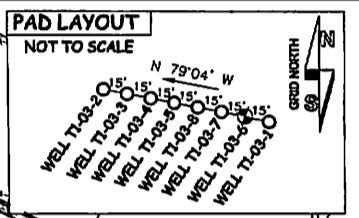
12,337' TO BOTTOM HOLE

6,715' TO BOTTOM HOLE

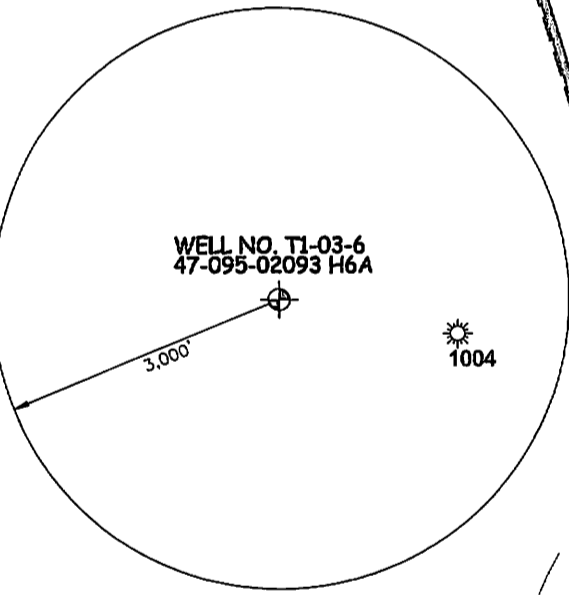
Jay Bee Oil & Gas, Inc.
Well No. T1-03-6
47-095-02093 H6A (AS DRILLED)

AS DRILLED DATA:
WELL T1-03-6 TOP HOLE INFORMATION:
N: 348,152ft E: 1,632,380ft
LAT: 39.44857 LON: 80.80184
BOTTOM HOLE INFORMATION:
N: 354,603ft E: 1,628,630ft
LAT: 39.46613 LON: 80.81545
WEST VIRGINIA COORDINATE
SYSTEM OF 1927 NORTH ZONE.
ZONE WAS DERIVED FROM
MEASUREMENTS TAKEN WITH
TRIMBLE GEOMX SUBMETER
T1-03-6 TOP HOLE
MAPPING GRADE GPS UNIT.
PLAT ORIENTATION, CORNER,
AND WELL REFERENCE TIE LINES
ARE BASED ON GRID NORTH.

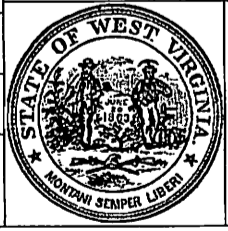
(NAD) 83 (UTM) ZONE 17 COORDS:
WELL T1-03-6 TOP HOLE INFORMATION:
N: 4,366,584m E: 517,065m
BOTTOM HOLE INFORMATION:
N: 4,368,531m E: 515,890m



- NOTE: 1. NO OCCUPIED DWELLINGS OR BUILDINGS TWO THOUSAND FIVE HUNDRED (2,500) SQUARE FEET OR LARGER USED TO HOUSE OR SHELTER DAIRY CATTLE OR POULTRY HUSBANDRY ARE LOCATED WITHIN SIX HUNDRED TWENTY-FIVE (625) FEET OF THE CENTER OF THE WELL PAD AND NO WATER WELLS OR DEVELOPED SPRINGS WITHIN TWO HUNDRED FIFTY (250) FEET OF WELL. 2. TOP HOLE DATA TAKEN FROM A WELL PLAT FOR API# 47-095-02093H6A DATED THE 20TH DAY OF NOVEMBER 2012 AS PREPARED BY DAVID JACKSON. 3. AS DRILLED DATA AND LEASE INFORMATION WAS PROVIDED BY JAY BEE OIL & GAS, INC. 4. WLS IS NOT CERTIFYING THE DATA AND INFORMATION PROVIDED LISTED IN NOTES 2 AND 3, ONLY THE RELATIONSHIP TO THE DATA AND INFORMATION PROVIDED TO THE LEASE BOUNDARIES. 5. WLS IS BY NO MEANS RESPONSIBLE FOR ANY ERRORS OR INACCURACIES WITH THE DATA AND INFORMATION THAT HAS BEEN PROVIDED.



JOB # JAYBEET1-03
DRAWING # T1-03-6AD
SCALE 1" = 1000'
MINIMUM DEGREE OF ACCURACY SUBMETER
PROVEN SOURCE OF ELEV. SUBMETER MAPPING GRADE GPS



STATE OF WEST VIRGINIA, DIVISION OF ENVIRONMENTAL PROTECTION, OFFICE OF OIL AND GAS
WILLOW LAND SURVEYING PLLC
220 MASONIC AVE. PENNSBORO WEST VIRGINIA 26415

LEGEND
--- Surface Owner Boundary Lines +/-
- - - Interior Surface Tracts +/-
⊕ Found monument, as noted
○ Proposed Well Path
○ As Drilled Well Path
DATE 12/04/15
OPERATOR'S WELL# T1-03-6

WELL TYPE: OIL ___ GAS X LIQUID INJECTION ___ WASTE DISPOSAL ___ 47 - 095 - 02093 H6A
(IF "GAS") PRODUCTION X STORAGE ___ DEEP ___ SHALLOW X STATE COUNTY PERMIT
LOCATION: ELEVATION 723.6' WATERSHED OUTLET MIDDLE ISLAND CREEK
QUADRANGLE SHIRLEY 7.5 DISTRICT MCELROY COUNTY TYLER
SURFACE OWNER DONALD J. & JUDITH A. LISBY ACREAGE 80 ACRES +/-
OIL & GAS ROYALTY OWNER T1-03; T-3130; W-698; T-3151 LEASE ACREAGE 639 ACRES+; 61.73 ACRES+; 143 ACRES+; 32 ACRES+
T-3150 46.5 ACRES+
PROPOSED WORK: DRILL ___ CONVERT ___ DRILL DEEPER ___ REDRILL ___ FRACTURE OR STIMULATE ___
PLUG OFF OLD FORMATION ___ PERFORATE NEW FORMATION ___ OTHER PHYSICAL CHANGE IN WELL
(SPECIFY) (X) AS DRILLED PLUG & ABANDON CLEAN OUT & REPLUG
TARGET FORMATION MARCELLUS ESTIMATED DEPTH 6,396' TVD 14,085' MD
WELL OPERATOR JAY BEE OIL & GAS, INC. DESIGNATED AGENT RANDY BRODA
ADDRESS 1720 ROUTE 22 ADDRESS ROUTE 1, BOX 5
FORM WW-6 EAST UNION, NJ 07083 CAIRO, WV 26337

02/19/2016

COUNTY NAME
PERMIT