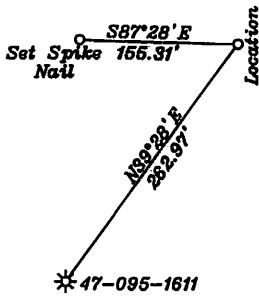


References



LATITUDE 39-30-00 N TH  
 LATITUDE 39-27-30 N BH

**Surface Hole Location**  
 UTM NAD 83(Meters)-4369716.1 N, 617781.6 E  
 Geo. NAD 83-39.476854 N, 80.793257 W  
 State Plane NAD 83-358424.7 N, 1603460.4 E

**Landing Point 1**  
 UTM NAD 83(Meters)-4369887.4 N, 618061.6 E  
 Geo. NAD 83-39.476589 N, 80.790002 W  
 State Plane NAD 83-358315.3 N, 1604377.9 E

P-Warner T.M. 6/10 107.63 Ac. Ls. T3098A  
 Q-Warner T.M. 6/10.1 0.368 Ac.

**Landing Point 2**  
 UTM NAD 83(Meters)-4369840.2 N, 618183.4 E  
 Geo. NAD 83-39.476162 N, 80.788586 W  
 State Plane NAD 83-358163.7 N, 1604776.3 E

**Landing Point 3**  
 UTM NAD 83(Meters)-4369889.5 N, 618466.6 E  
 Geo. NAD 83-39.470112 N, 80.785429 W  
 State Plane NAD 83-355937.6 N, 1605834.6 E

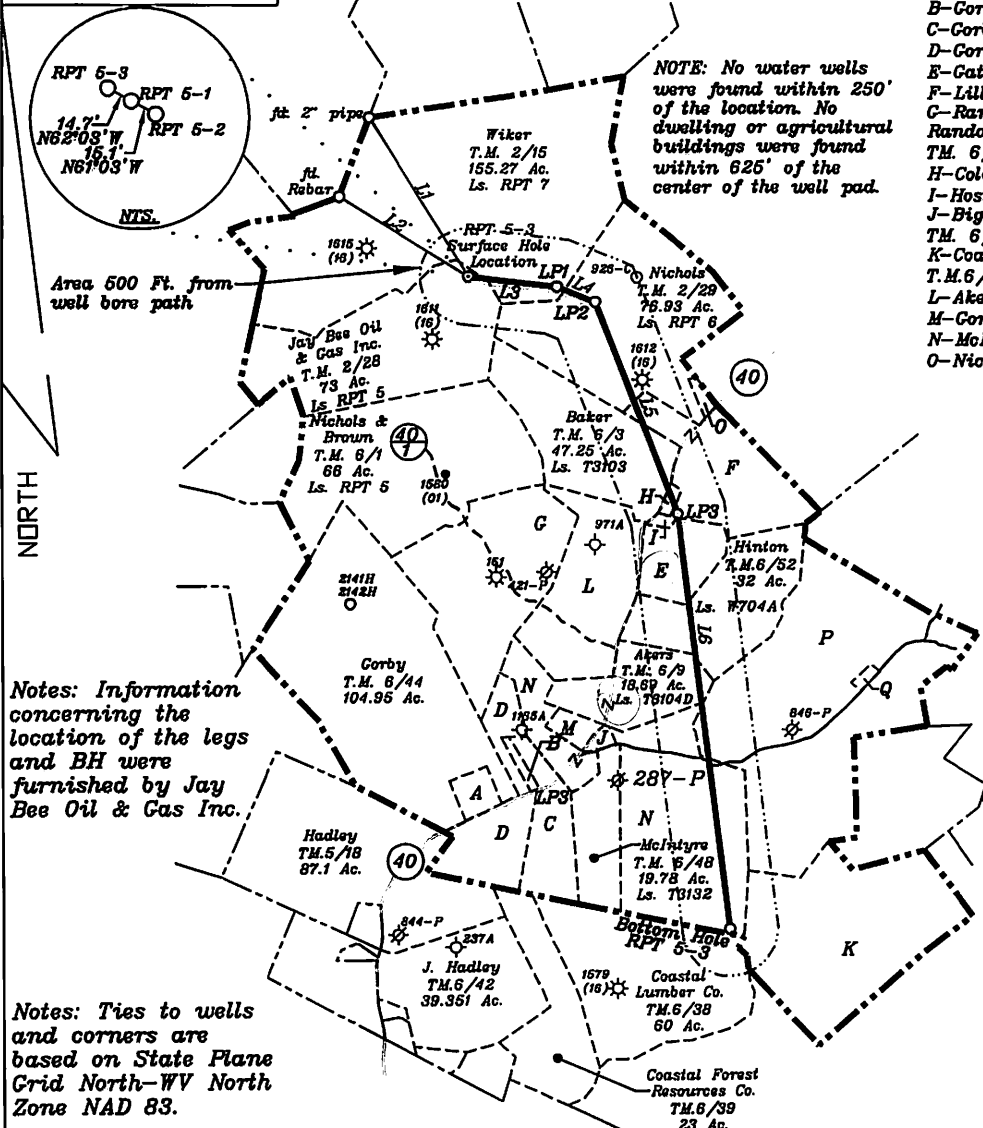
**Bottom Hole Location**  
 UTM NAD 83(Meters)-4367652.1 N, 618640.3 E  
 Geo. NAD 83-39.458238 N, 80.783329 W  
 State Plane NAD 83-351604.8 N, 1606166.6 E

- A-Corby T.M. 6/45 4 Ac.
- B-Corby T.M. 6/46.1 0.92 Ac.
- C-Corby T.M. 6/47 16.73 Ac.
- D-Corby T.M. 6/45 18.74 Ac.
- E-Catroll T.M. 6/7 14.62 Ac. Ls. T3101
- F-Liller T.M. 6/3.1 15 Ac. Ls. T3180
- G-Randall J. Broda, as trustee of Randall J. Broda Family Trust II T.M. 6/2 56.5 Ac. Ls. RPT 4
- H-Cole T.M. 6/5 1 Ac. Ls. T3100A1
- I-Hostuttler T.M. 6/6 0.38 Ac.
- J-Big Run Meth Church T.M. 6/51 2 Ac.
- K-Coastal Forest Resources Co. T.M.6/36 70 Ac.
- L-Akers T.M.6/8 33.13 Ac. Ls. W704B1
- M-Corby T.M. 6/50 3.16 Ac. Ls. W704B2
- N-McIntyre T.M. 6/49 85.89 Ac. Ls. T3132
- O-Nichols T.M. 6/4 1.25 Ac.

NOTE: No water wells were found within 250' of the location. No dwelling or agricultural buildings were found within 625' of the center of the well pad.

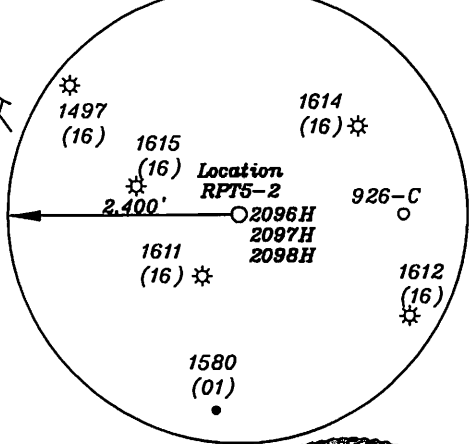
Note: All wells within 500' of the horizontal leg are shown on this plat based upon information taken from DEP mapping, well plats & aerial photos.

NUMBER	DIRECTION	DISTANCE
L1	S87°58'E	1,944'
L2	S68°13'E	1,588'
L3	S83°12'E	924'
L4	S67°52'E	429'
L5	S21°12'E	2,377'
L6	S06°59'E	4,366'



Notes: Information concerning the location of the legs and BH were furnished by Jay Bee Oil & Gas Inc.

Notes: Ties to wells and corners are based on State Plane Grid North-WV North Zone NAD 83.

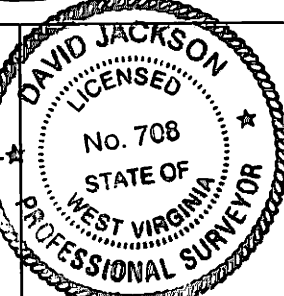


(+) DENOTES LOCATION OF WELL ON UNITED STATES TOPOGRAPHIC MAPS

FILE NO. \_\_\_\_\_  
 DRAWING NO. 1  
 SCALE 1" = 2000'  
 MINIMUM DEGREE OF ACCURACY 1 in 200  
 PROVEN SOURCE OF ELEVATION GPS  
submeter unit

I THE UNDERSIGNED, HEREBY CERTIFY THAT THIS PLAT IS CORRECT TO THE BEST OF MY KNOWLEDGE AND BELIEF AND SHOWS ALL THE INFORMATION REQUIRED BY LAW AND THE RULES ISSUED AND PRESCRIBED BY THE DEPARTMENT OF ENVIRONMENTAL PROTECTION.

(SIGNED) David L Jackson  
 R.P.E. \_\_\_\_\_ L.I.S. 708



STATE OF WEST VIRGINIA  
 Division of Environmental Protection  
 OFFICE OF OIL AND GAS

DATE April 20, 2015  
 OPERATOR'S WELL NO. RPT 5-3  
 API WELL NO. 47-095-02096

WELL TYPE: OIL X LIQUID INJECTION WASTE DISPOSAL STATE COUNTY PERMIT  
 (IF "GAS") PRODUCTION X STORAGE DEEP SHALLOW X

LOCATION: ELEVATION 1,258' WATER SHED Big Run  
 DISTRICT McElroy COUNTY Tyler  
 QUADRANGLE Shirley 7 1/2'

SURFACE OWNER Jay Bee Oil & Gas, Inc ACREAGE 73 ac  
 OIL & GAS ROYALTY OWNER Jay Bee Oil & Gas, Inc.(73Ac.), Leo W. Wiker, et al(155.27Ac.), Cecil Nichols, et al(76.93Ac.), Dean R. Baker, et al(47.25Ac.), Linda Liller(15Ac.), Dorris L. Catroll(14.62Ac.), Thomas E. Hilton, et al(32Ac.), Steven Akers, et al(18.69Ac.) & F.M. McIntyre est.(85.89Ac.)

LEASE NO. RPT 5, RPT 7, RPT 6, T3180, T3103, T3100A1, T3101, W704A, T3104D, T3098A, T3098A & T3132 10/07/2016

PROPOSED WORK: DRILL X CONVERT DRILL DEEPER REDRILL FRACTURE DR  
 STIMULATE X PLUG OFF OLD FORMATION PERFORATE NEW  
 FORMATION X OTHER PHYSICAL CHANGE IN WELL (SPECIFY) \_\_\_\_\_

PLUG AND ABANDON CLEAN OUT AND REPLUG  
 TARGET FORMATION Marcellus ESTIMATED DEPTH 7,500'+ Horizontal leg  
 WELL OPERATOR Jay Bee Oil & Gas, Inc. DESIGNATED AGENT Randy Broda  
 ADDRESS 1720 Rt. 22 East Union, NJ 07083 ADDRESS Rt. 1 Box 5 Cairo, WV 26337