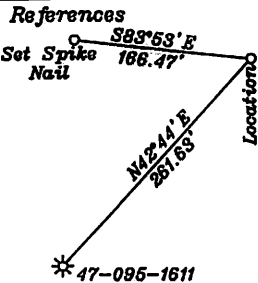


LATITUDE 39-30-00 N

Bottom Hole 11,638'



Surface Hole Location
 UTM NAD 83(Meters)-4369711.9 N, 517789.5 E
 Geo. NAD 83-39.476816 N, 80.793164 W
 State Plane NAD 83-358410.5 N, 1603486.6 E

Landing Point 1
 UTM NAD 83(Meters)-4369510.9 N, 517718.7 E
 Geo. NAD 83-39.476006 N, 80.793992 W
 State Plane NAD 83-357754.9 N, 1603243.3 E

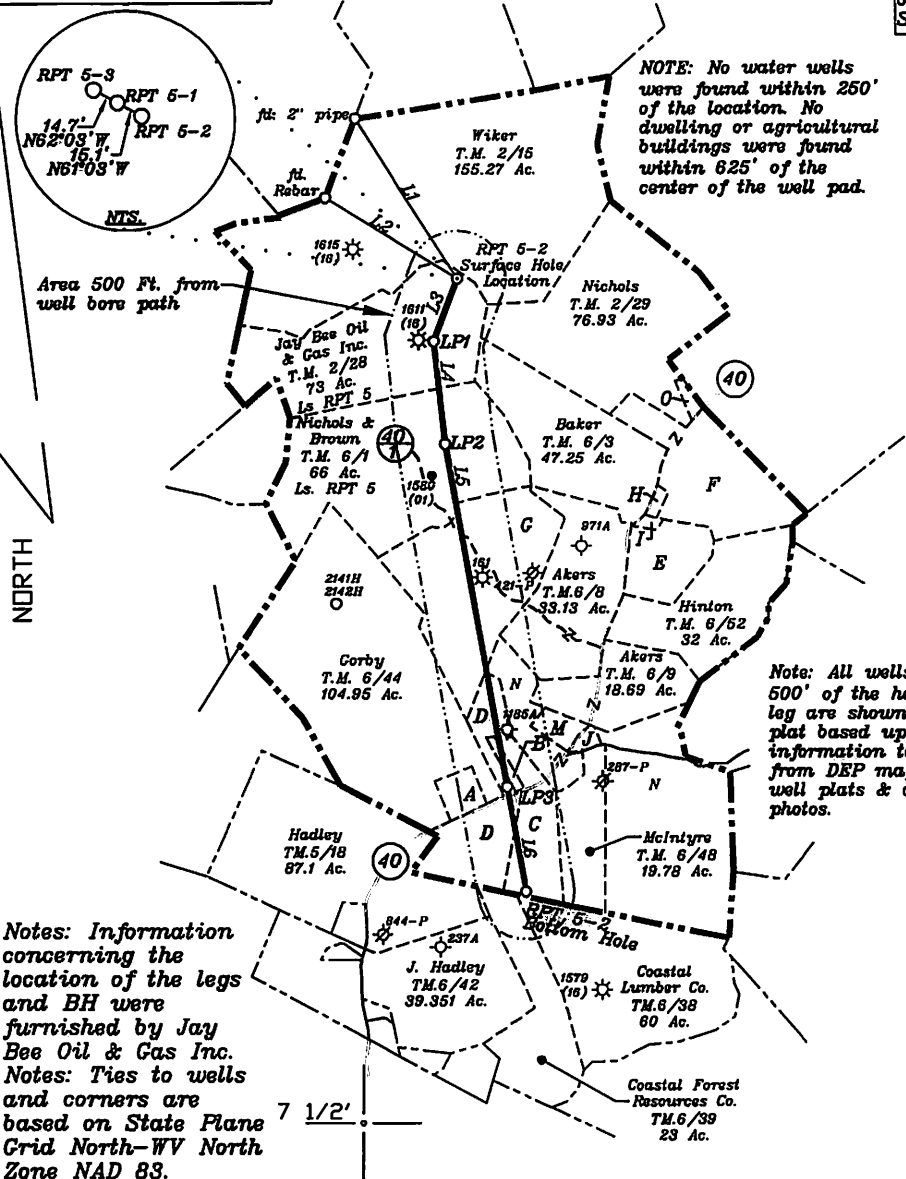
Landing Point 2
 UTM NAD 83(Meters)-4369186.6 N, 517759.8 E
 Geo. NAD 83-39.472083 N, 80.793522 W
 State Plane NAD 83-356688.3 N, 1603360.5 E

Landing Point 3
 UTM NAD 83(Meters)-4368097.5 N, 517972.7 E
 Geo. NAD 83-39.462265 N, 80.791077 W
 State Plane NAD 83-353102.9 N, 1603999.4 E

Bottom Hole Location
 UTM NAD 83(Meters)-4367764.8 N, 518038.9 E
 Geo. NAD 83-39.459266 N, 80.790317 W
 State Plane NAD 83-352007.4 N, 1604198.4 E

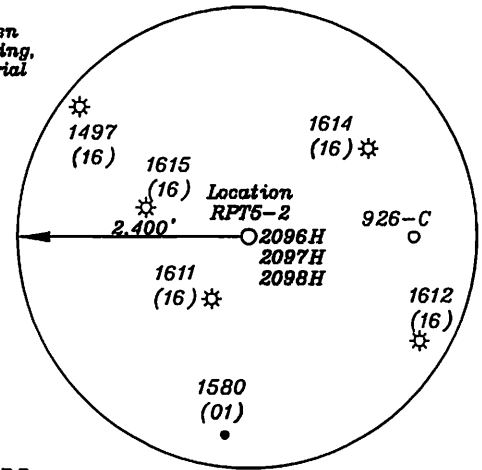
NOTE: No water wells were found within 250' of the location. No dwelling or agricultural buildings were found within 625' of the center of the well pad.

- A-Corby T.M. 6/45 4 Ac.
- B-Corby T.M. 6/46.1 0.92 Ac. Ls. T3104E2
- C-Corby T.M. 6/47 16.73 Ac. Ls. T3104E
- D-Corby T.M. 6/45 18.74 Ac. Ls. T3104E1
- E-Catrell T.M. 6/7 14.62 Ac.
- F-Liller T.M. 6/3.1 15 Ac.
- G-Randall J. Broda, as trustee of Randall J. Broda Family Trust II T.M. 6/2 58.5 Ac. Ls. RPT 4
- H-Cole T.M. 6/5 1 Ac.
- I-Hostuttler T.M. 6/6 0.38 Ac.
- J-Big Run Meth Church T.M. 6/61 2 Ac.
- M-Corby T.M. 6/50 3.16 Ac.
- N-McIntyre T.M. 6/49 25.89 Ac.
- O-Nichols T.M. 6/4 1.25 Ac.



NUMBER	DIRECTION	DISTANCE
L1	S82°24' E	1,970'
L2	S68°17' E	1,617'
L3	S20°22' W	699'
L4	S06°16' E	1,073'
L5	S10°06' E	3,642'
L6	S10°18' E	1,113'

Note: All wells within 500' of the horizontal leg are shown on this plat based upon information taken from DEP mapping, well plats & aerial photos.

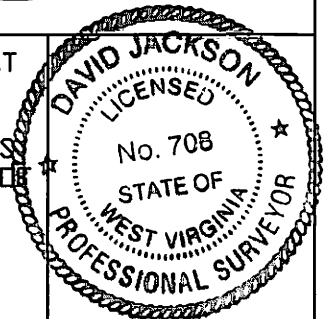


(+) DENOTES LOCATION OF WELL ON UNITED STATES TOPOGRAPHIC MAPS

FILE NO. _____
 DRAWING NO. 1
 SCALE 1" = 2000'
 MINIMUM DEGREE OF ACCURACY 1 in 200
 PROVEN SOURCE OF ELEVATION GPS
submeter unit

I THE UNDERSIGNED, HEREBY CERTIFY THAT THIS PLAT IS CORRECT TO THE BEST OF MY KNOWLEDGE AND BELIEF AND SHOWS ALL THE INFORMATION REQUIRED BY LAW AND THE RULES ISSUED AND PRESCRIBED BY THE DEPARTMENT OF ENVIRONMENTAL PROTECTION.

(SIGNED) David Jackson
 R.P.E. _____ L.S. 708



STATE OF WEST VIRGINIA
 Division of Environmental Protection
 OFFICE OF OIL AND GAS

DATE April 20, 2015
 OPERATOR'S WELL NO. RPT 5-2
 API WELL NO. _____

WELL TYPE: OIL GAS LIQUID INJECTION WASTE DISPOSAL STATE 47 COUNTY 095 PERMIT 02097
 (IF 'GAS') PRODUCTION STORAGE DEEP SHALLOW

LOCATION: ELEVATION 1,258' WATER SHED Big Run
 DISTRICT McElroy COUNTY Tyler
 QUADRANGLE Shirley 7 1/2' ACREAGE 73 ac.

SURFACE OWNER Jay Bee Oil & Gas, Inc LEASE ACREAGE ac
 OIL & GAS ROYALTY OWNER Jay Bee Oil & Gas, Inc.(73Ac.) & (56.5Ac.), Gary S. Nichols(66Ac.), James Ira Corby et al(0.92Ac.), (18.74Ac.) & (16.73Ac.) LEASE NO. RPT 5, RPT 4, T3104E1, T3104E2, & T3104E

PROPOSED WORK: DRILL CONVERT DRILL DEEPER REDRILL FRACTURE OR STIMULATE PLUG OFF OLD FORMATION PERFORATE NEW FORMATION OTHER PHYSICAL CHANGE IN WELL (SPECIFY) _____

PLUG AND ABANDON CLEAN OUT AND REPLUG
 TARGET FORMATION Marcellus ESTIMATED DEPTH 7,500' + Horizontal leg
 WELL OPERATOR Jay Bee Oil & Gas, Inc. DESIGNATED AGENT Randy Broda
 ADDRESS 1720 Rt. 22 East Union, NJ 07083 ADDRESS Rt. 1 Box 5 Cairo, WV 26337

10/07/2016