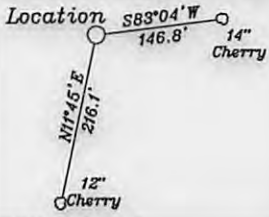


References-Magnetic North



NUMBER	DIRECTION	DISTANCE
L1	N47°52'W	614'
L2	N15°58'W	1132'
L3	S3°33'W	3294'
L4	N37°18'E	2586'

Bottom Hole 6,583'
LATITUDE 39-27-30 N

- A- Stevens TM. 12/35 45 Ac.
- B- Lancaster TM. 12/37 115.81 Ac.
- C- Stevens TM. 12/34 98.38 Ac.
- D- Walters TM. 12/33 50 Ac.
- E- Coastal Lumber Inc. TM. 12/39 97.57 Ac.
- F- Higginbotham TM. 12/38 111.09 Ac.
- G- B Doak TM. 12/10.1 3.812 Ac.
- H- Doak TM. 12/10 93.3 Ac.
- I- Stevens p/o TM. 12/29 127.84 Ac.
- J- Rover TM. 12/20 80 Ac.
- K- White TM. 12/16 21.7 Ac.
- L- Walters TM. 12/15 20.5 Ac.
- M- Walters TM. 12/14.1 23.02 Ac.
- N- Walters TM. 12/14 23.4 Ac.
- O- Doak TM. 12/13 25.088 Ac.
- P- Braucher TM. 12/11 30 Ac.
- Q- Walters TM. 12/17 30.02 Ac.
- R- Braucher TM. 12/13.1 4.912 Ac.
- S- White TM. 12/19 14.75 Ac.
- T- D. Doak TM. 12/10.2 9.158 Ac.
- U- Walters TM. 12/34.1 1.64 Ac.
- V- R.Lancaster TM. 12/37.1 4.19 Ac.
- W- White TM. 12/18 1.42 Ac.
- X- Robinson p/o TM. 12/9 63.51 Ac.
- Y - Stevens p/o TM 12/30 95.7 Ac.

Top Hole

NAD 27-39.438714 N, 80.721002 W
UTM NAD83(meters)-4365509.3 N. 524024.1 E
State Plane NAD 27-344242.3 N, 1655156.3 E

LPI-Landing Point 1

NAD 27-39.439828 N, 80.722634 W
UTM NAD83(meters)-4365632.4 N. 523883.3 E
State Plane NAD 27-344654 N, 1654701 E

LP2-Landing Point 2

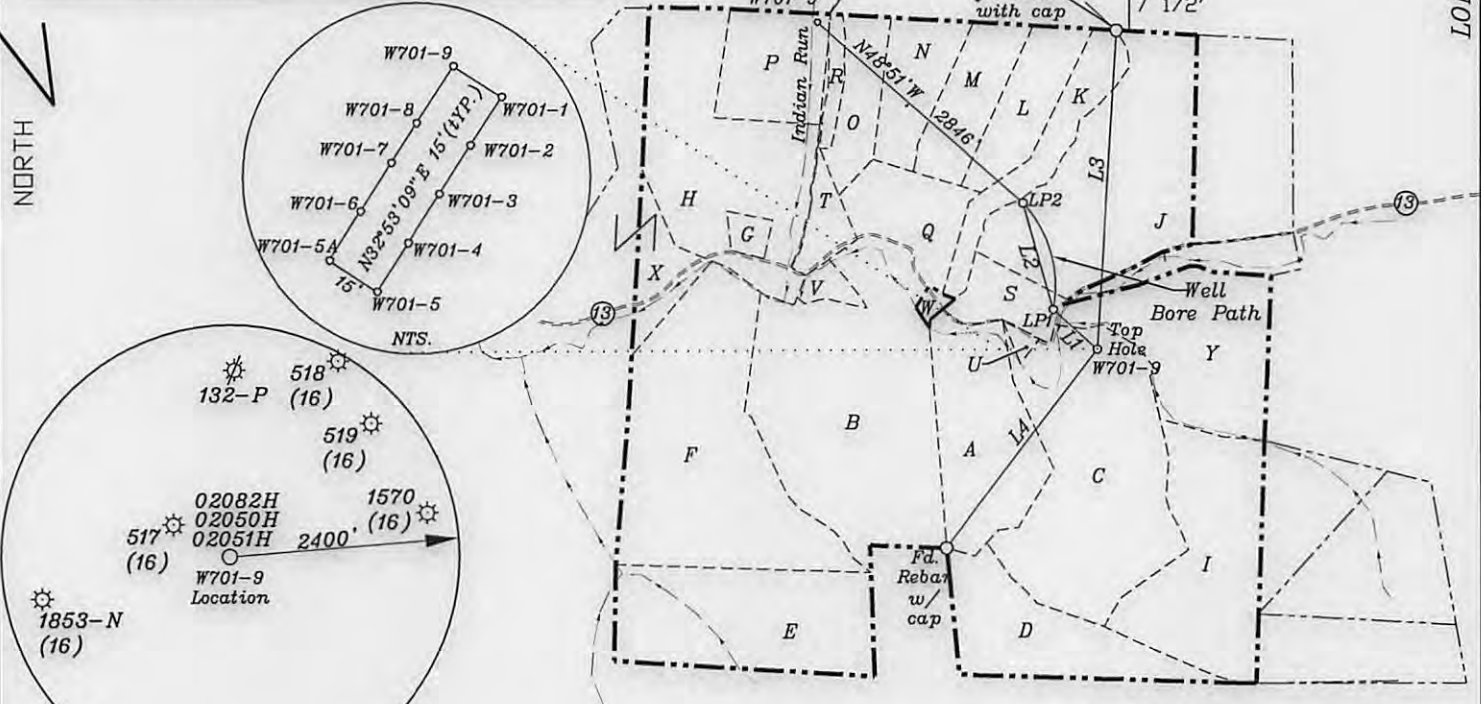
NAD 27-39.442804 N, 80.723790 W
UTM NAD83(meters)-4365962.4 N. 523782.8 E
State Plane NAD 27-345743 N, 1654389 E

Bottom Hole

NAD 27-39.447865 N, 80.731466 W
UTM NAD83(meters)-4366522.1 N. 523120.6 E
State Plane NAD 27-347615 N, 1652247 E

7 1/2'

LONGITUDE 80-42-30 N Bottom Hole 3,724' Top Hole 7,097'



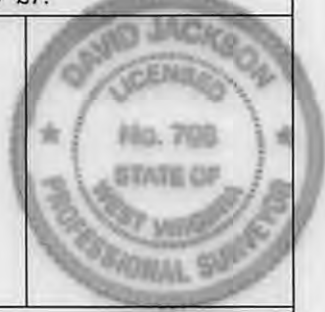
Notes: Ties to wells and corners are based on State Plane Grid North-WV North Zone NAD 27.

(+) DENOTES LOCATION OF WELL ON UNITED STATES TOPOGRAPHIC MAPS

FILE NO. _____
DRAWING NO. 1
SCALE 1" = 2000'
MINIMUM DEGREE OF ACCURACY 1 in 200
PROVEN SOURCE OF ELEVATION GPS
submeter unit

I, THE UNDERSIGNED, HEREBY CERTIFY THAT THIS PLAT IS CORRECT TO THE BEST OF MY KNOWLEDGE AND BELIEF AND SHOWS ALL THE INFORMATION REQUIRED BY LAW AND THE RULES ISSUED AND PRESCRIBED BY THE DEPARTMENT OF ENVIRONMENTAL PROTECTION.

(SIGNED) David L. Jackson
R.P.E. _____ P.L.S. 708



STATE OF WEST VIRGINIA
Division of Environmental Protection
OFFICE OF OIL AND GAS

DATE June 20, 2013
OPERATOR'S WELL NO. W701-9
API WELL NO. _____

WELL TYPE: OIL X GAS X LIQUID INJECTION X WASTE DISPOSAL _____
(IF "GAS") PRODUCTION X STORAGE _____ DEEP _____ SHALLOW X

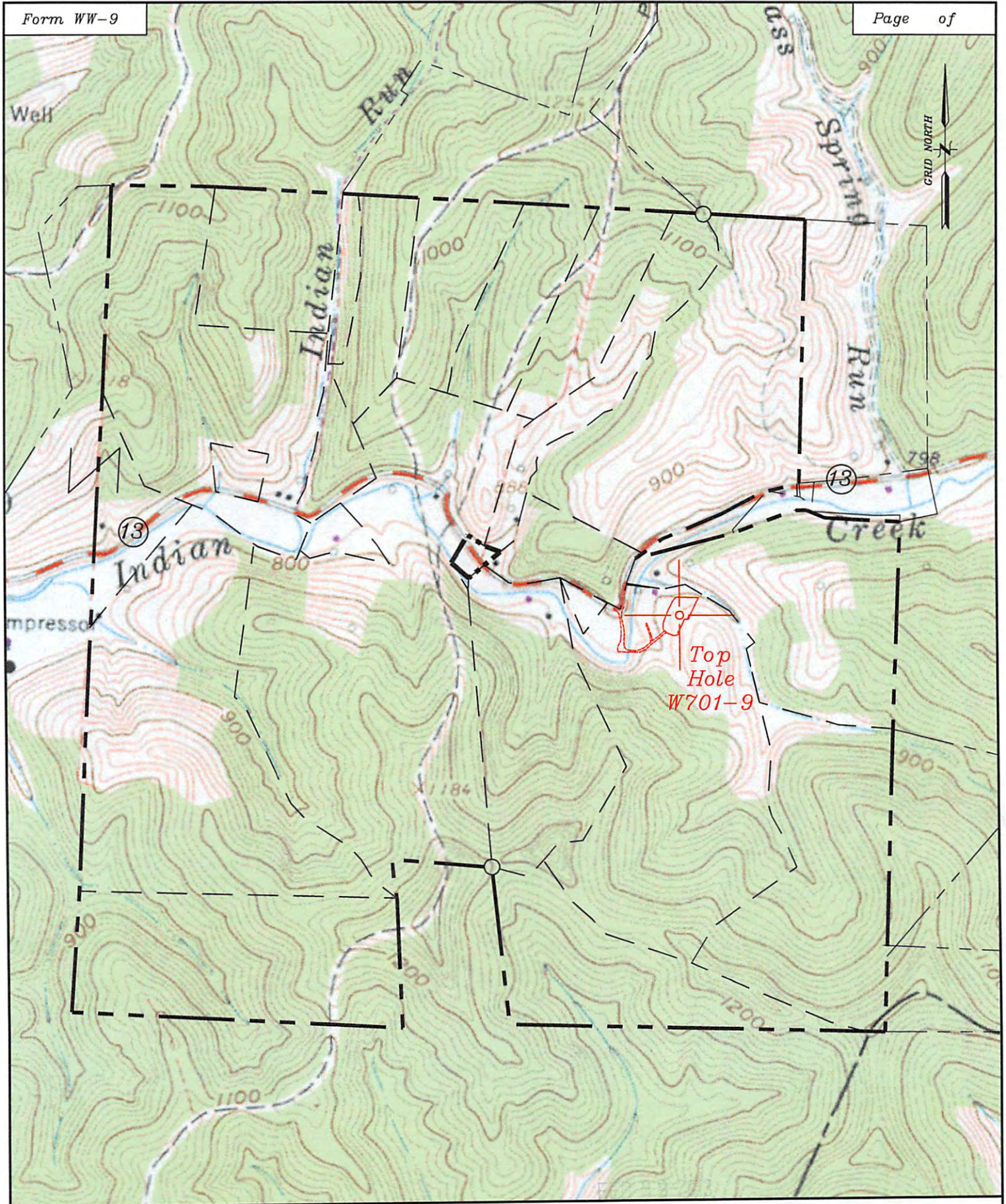
47 - 095 - 2108 H6A
STATE COUNTY PERMIT

LOCATION: ELEVATION 805' WATER SHED Indian Creek
DISTRICT McElroy COUNTY Tyler
QUADRANGLE Center Point 7 1/2'

SURFACE OWNER Phyllis Kay Stevens et al ACREAGE 98.38 ac.
OIL & GAS ROYALTY OWNER Mary Welch - 98.38 Ac.± & 95.7 Ac.±, Waco Oil & Gas Co. 14.75 Ac. ± & 80 Ac. ±, Chester Yeater 21.7 Ac. ±, 20.5 Ac.±, 23.02 Ac. ±, 23.4 Ac.±, 25.088 Ac. ±, 4.912 Ac. ± & Ralph E. Phillips 30 Ac.±
LEASE NO. W701P3 (TM. 12/34,) W701PI (TM. 12/30), T3011C (TM. 12/19, 12/20), T3011 (12/16, 12/15, 12/14.1, 12/14, 12/13, 12/13.1) T3011A (TM.12/11)

PROPOSED WORK: DRILL X CONVERT _____ DRILL DEEPER _____ REDRILL _____ FRACTURE OR STIMULATE X PLUG OFF OLD FORMATION _____ PERFORATE NEW FORMATION X OTHER PHYSICAL CHANGE IN WELL (SPECIFY) _____

PLUG AND ABANDON _____ CLEAN OUT AND REPLUG _____
TARGET FORMATION Marcellus ESTIMATED DEPTH TVD = 7250'± Horizontal Leg; TMD = 13500
WELL OPERATOR Jay Bee Oil & Gas, Inc. DESIGNATED AGENT Randy Broda
ADDRESS 1720 Rt. 22, East Union, NJ 07083 ADDRESS Route 1, Box 5, Cairo, WV 26337



Well: W701-9
 Quad: Center Point 7 1/2'
 District: McElroy
 County: Tyler

