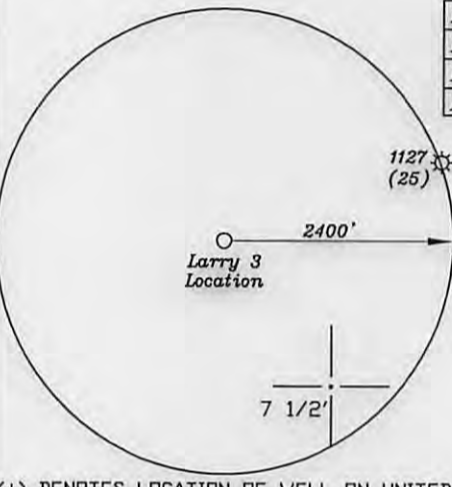
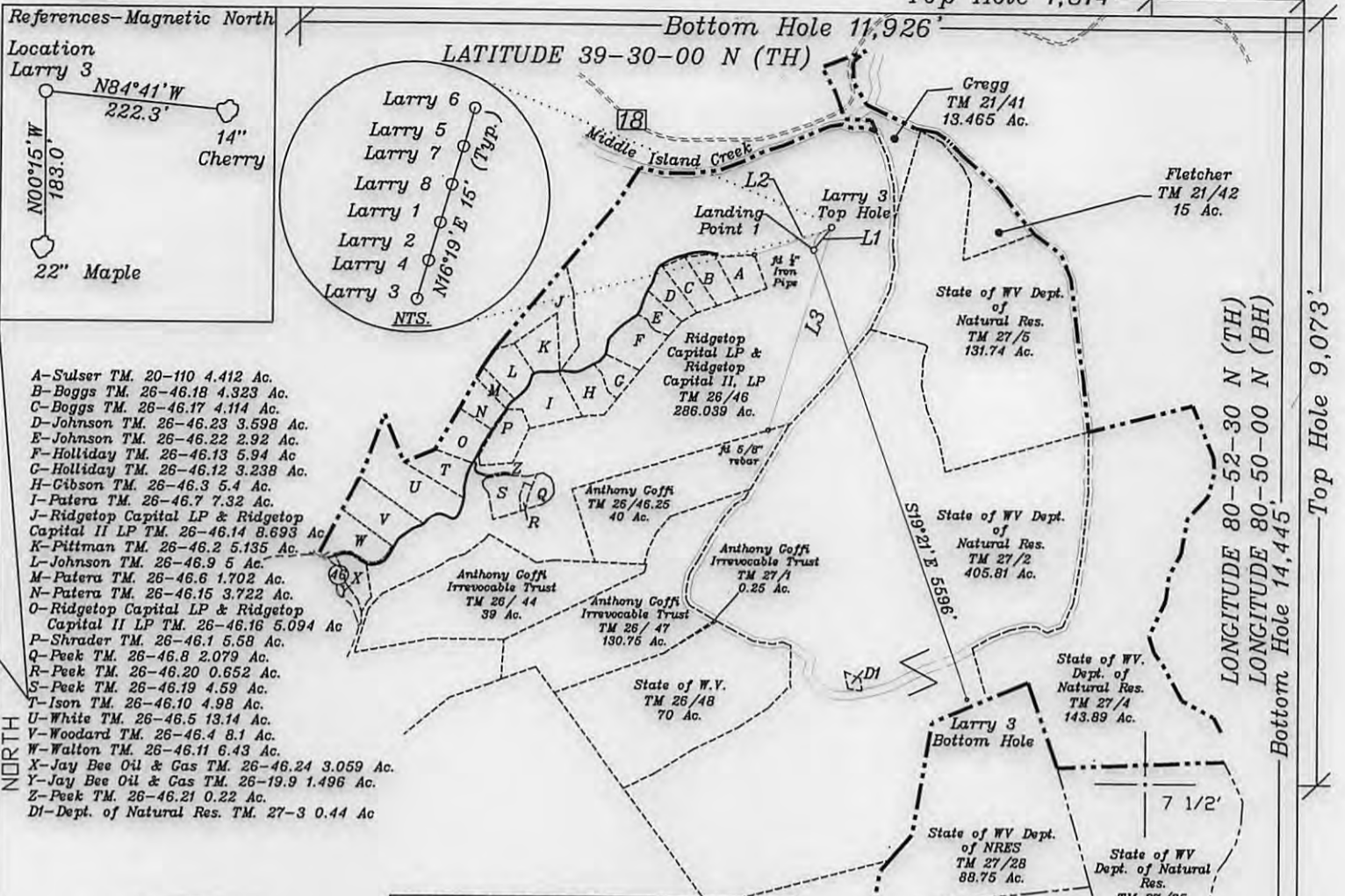


LATITUDE 39-30-00 N (TH)  
Bottom Hole 11,926'



NUMBER	DIRECTION	DISTANCE
L1	S38°00'W	341'
L2	N70°50'E	962'
L3	N17°02'E	2478'

Notes: Ties to wells and corners are based on State Plane Grid North-WV North Zone NAD 27.

<b>Top Hole</b> NAD 27- 39.475015 N, 80.880934 W NAD 83 (Meters)- 4369507.1 N, 510255.6 E State Plane NAD 27- 358116.5 N, 1610193.8 E
<b>Landing Point</b> NAD 27- 39.474269 N, 80.881663 W NAD 83 (Meters)- 4369424.3 N, 510193.0 E State Plane NAD 27- 357848 N, 1609984 E
<b>Bottom Hole</b> NAD 27- 39.459853 N, 80.874808 W NAD 83 (Meters)- 4367825.2 N, 510784.8 E State Plane NAD 27- 352568 N, 1611838 E

FILE NO. \_\_\_\_\_  
DRAWING NO. 1  
SCALE 1" = 2000'  
MINIMUM DEGREE OF ACCURACY 1 in 200  
PROVEN SOURCE OF ELEVATION GPS  
submeter unit

I THE UNDERSIGNED, HEREBY CERTIFY THAT THIS PLAT IS CORRECT TO THE BEST OF MY KNOWLEDGE AND BELIEF AND SHOWS ALL THE INFORMATION REQUIRED BY LAW AND THE REGULATIONS ISSUED AND PRESCRIBED BY THE DEPARTMENT OF ENVIRONMENTAL PROTECTION.  
(SIGNED) David A. Jackson  
R.P.E. \_\_\_\_\_ L.L.S. 708



STATE OF WEST VIRGINIA  
Division of Environmental Protection  
OFFICE OF OIL AND GAS

DATE May 30, 2013  
OPERATOR'S WELL NO. Larry 3  
API WELL NO. \_\_\_\_\_

WELL TYPE: OIL GAS  LIQUID INJECTION \_\_\_\_\_ WASTE DISPOSAL \_\_\_\_\_  
(IF "GAS") PRODUCTION  STORAGE \_\_\_\_\_ DEEP \_\_\_\_\_ SHALLOW

LOCATION: ELEVATION 739.4' WATER SHED Middle Island Creek  
DISTRICT Ellsworth COUNTY Tyler  
QUADRANGLE Middlebourne 7 1/2' (TH), Shirley 7 1/2' (BH)

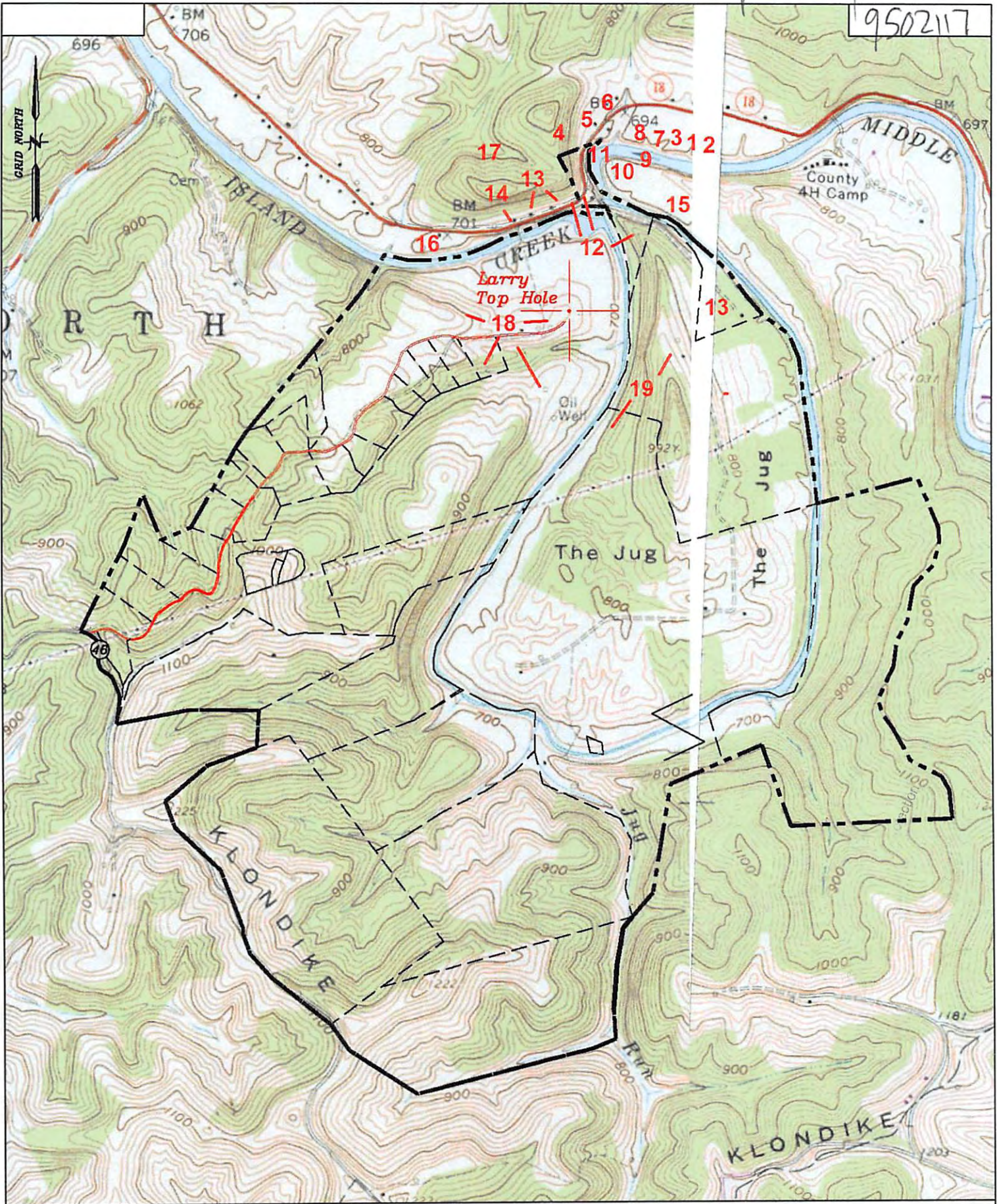
SURFACE OWNER Ridgetop Capital LP and Ridgetop Capital II, LP ACREAGE 286.03 ac.  
OIL & GAS ROYALTY OWNER Ridgetop Capital LP and Ridgetop Capital II, LP LEASE ACREAGE 286.03 ac.  
LEASE NO. RT2

PROPOSED WORK: DRILL  CONVERT \_\_\_\_\_ DRILL DEEPER \_\_\_\_\_ REDRILL \_\_\_\_\_ FRACTURE OR  
STIMULATE \_\_\_\_\_ PLUG OFF OLD FORMATION \_\_\_\_\_ PERFORATE NEW  
FORMATION  OTHER PHYSICAL CHANGE IN WELL (SPECIFY) \_\_\_\_\_

PLUG AND ABANDON \_\_\_\_\_ CLEAN OUT AND REPLUG \_\_\_\_\_  
TARGET FORMATION Marcellus ESTIMATED DEPTH 16,500'+ Horizontal leg  
WELL OPERATOR Jay-Bee Oil & Gas, Inc. DESIGNATED AGENT Randy Broda  
ADDRESS 1720 Route 22 E, Union, NJ 07083 ADDRESS 3570 Shields Hill Rd., Cairo, WV 26337

plat spotted ✓

9502117



Well: Larry 3  
 Quad: Middlebourne 7 1/2'  
 District: Ellsworth  
 County: Tyler

