



Weigle Unit 1H
Tyler County WV
Northing: 14326547.37
Easting: 1680227.52
As Drilled



To convert Magnetic North to Grid, Subtract 8.53°
 To convert True North to Grid, Subtract 0.09°

Azimuths to Grid North
 True North: -0.09°
 Magnetic North: -8.53°

Magnetic Field
 Strength: 52439.0snT
 Dip Angle: 66.99°
 Date: 1/7/2014
 Model: IGRF2010

WELL DETAILS Weigle Unit 1H						
Ground Level: 1201.0						
+N/-S	+E/-W	Northing	Easting	Latitude	Longitude	
0.0	0.0	14326547.37	1680227.52	39° 27' 7.276 N	80° 51' 32.288 W	

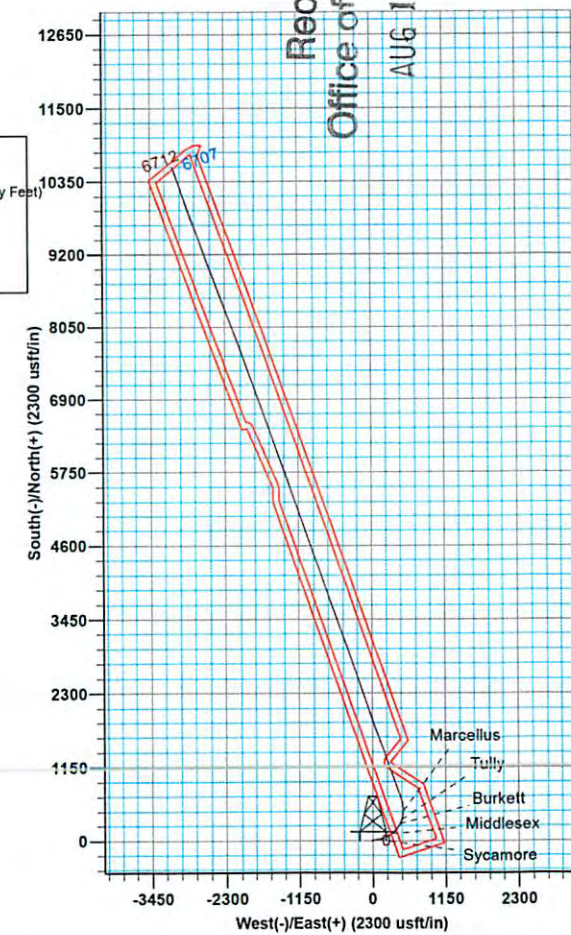
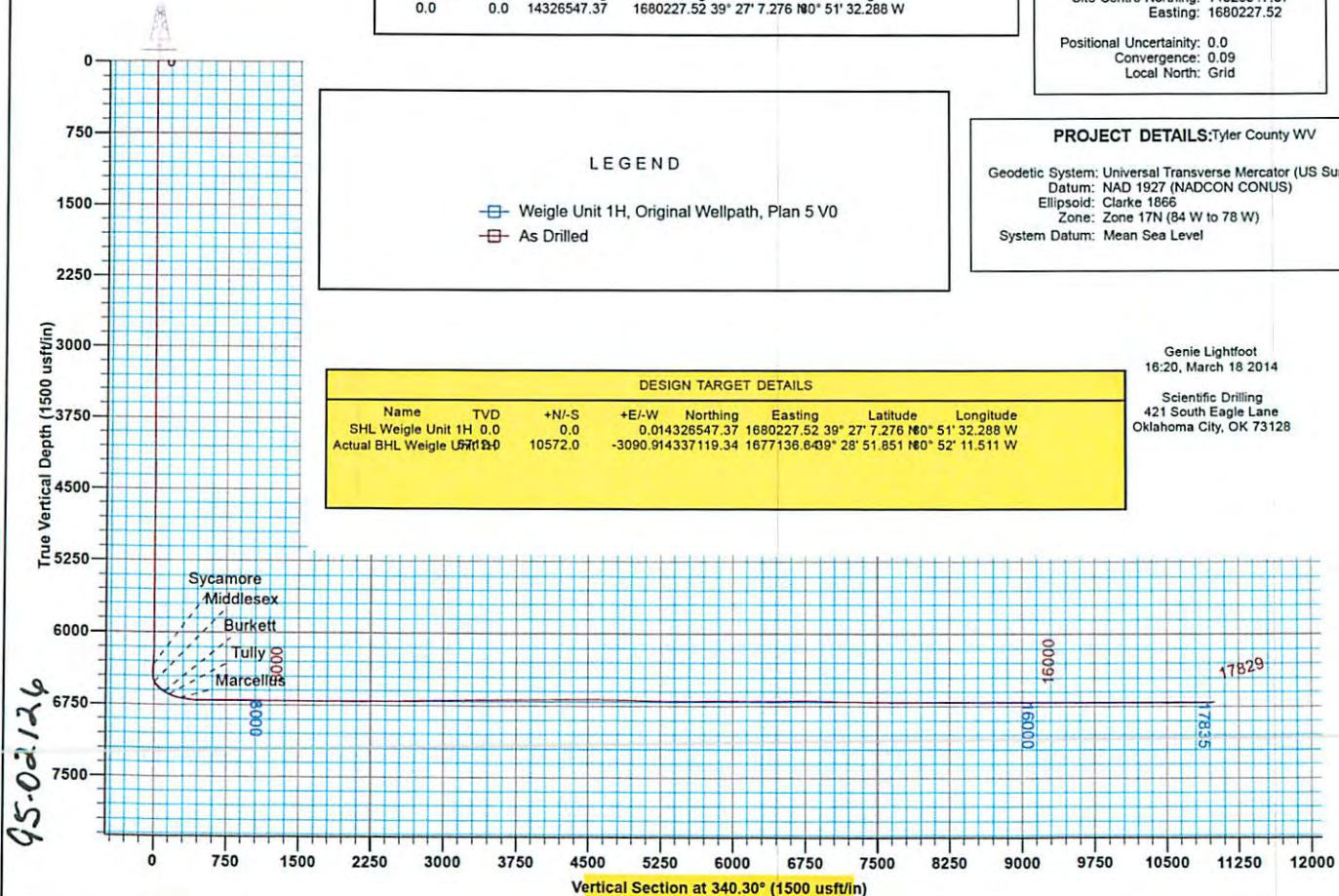
SITE DETAILS: Weigle / Klondike / Pad	
Site Centre Northing:	14326547.37
Easting:	1680227.52
Positional Uncertainty:	0.0
Convergence:	0.09
Local North:	Grid

LEGEND	
	Weigle Unit 1H, Original Wellpath, Plan 5 V0
	As Drilled

PROJECT DETAILS: Tyler County WV	
Geodetic System:	Universal Transverse Mercator (US Survey Feet)
Datum:	NAD 1927 (NADCON CONUS)
Ellipsoid:	Clarke 1866
Zone:	Zone 17N (84 W to 78 W)
System Datum:	Mean Sea Level

DESIGN TARGET DETAILS								
Name	TVD	+N/-S	+E/-W	Northing	Easting	Latitude	Longitude	
SHL Weigle Unit 1H	0.0	0.0	0.0	14326547.37	1680227.52	39° 27' 7.276 N	80° 51' 32.288 W	
Actual BHL Weigle Unit 1H	10572.0	0.0	0.0	3090.914337	119.34	1677136.6	89° 28' 51.851 N	80° 52' 11.511 W

Genie Lightfoot
 16:20, March 18 2014
 Scientific Drilling
 421 South Eagle Lane
 Oklahoma City, OK 73128



95-02126



Antero Resources

**Tyler County WV
Weigle / Klondike / Pad
Weigle Unit 1H
Original Wellpath**

Design: As Drilled

EOW Completion Report

18 March, 2014

Received
Office of Oil & Gas
AUG 17 2015



10/09/2015

95-02126



EOW Completion Report



Company:	Antero Resources	Local Co-ordinate Reference:	Well Weigle Unit 1H
Project:	Tyler County WV	TVD Reference:	Weigle Unit 1H GL 1201' + 24' RKB @ 1225.0usft
Site:	Weigle / Klondike / Pad	MD Reference:	Weigle Unit 1H GL 1201' + 24' RKB @ 1225.0usft
Well:	Weigle Unit 1H	North Reference:	Grid
Wellbore:	Original Wellpath	Survey Calculation Method:	Minimum Curvature
Design:	As Drilled	Database:	Oklahoma District

Project	Tyler County WV, Tyler Co West Virginia		
Map System:	Universal Transverse Mercator (US Survey Feet)	System Datum:	Mean Sea Level
Geo Datum:	NAD 1927 (NADCON CONUS)		
Map Zone:	Zone 17N (84 W to 78 W)		

Site	Weigle / Klondike / Pad		
Site Position:		Northing:	14,326,547.37 usft
From:	Map	Easting:	1,680,227.52 usft
Position Uncertainty:	0.0 usft	Slot Radius:	13-3/16"
		Latitude:	39° 27' 7.276 N
		Longitude:	80° 51' 32.288 W
		Grid Convergence:	0.09 °

Well	Weigle Unit 1H		
Well Position	+N/-S	0.0 usft	Northing: 14,326,547.37 usft
	+E/-W	0.0 usft	Easting: 1,680,227.52 usft
Position Uncertainty	2.0 usft	Wellhead Elevation:	1,225.0 usft
		Latitude:	39° 27' 7.276 N
		Longitude:	80° 51' 32.288 W
		Ground Level:	1,201.0 usft

Wellbore	Original Wellpath				
Magnetics	Model Name	Sample Date	Declination (°)	Dip Angle (°)	Field Strength (nT)
	IGRF2010	1/7/2014	-8.44	66.99	52,439

Design	As Drilled			
Audit Notes:				
Version:	1.0	Phase:	ACTUAL	Tie On Depth: 0.0
Vertical Section:		Depth From (TVD) (usft)	+N/-S (usft)	+E/-W (usft)
		0.0	0.0	0.0
				Direction (°) 340.30

Survey Program	Date	3/18/2014		
From (usft)	To (usft)	Survey (Wellbore)	Tool Name	Description
100.0	5,600.1	Survey #1 Gyro to KOP (Original Wellpath)	SDI Standard Keeper	Scientific Drilling Intl. Standard Wireline Keeper
5,667.0	17,829.0	Survey #2 MWD (Original Wellpath)	MWD SDI	MWD - Standard ver 1.0.1

MD (usft)	Inc (°)	Azi (azimuth) (°)	TVD (usft)	N/S (usft)	E/W (usft)	V. Sec (usft)	DLeg (°/100usft)
0.0	0.00	0.00	0.0	0.0	0.0	0.0	0.00
100.0	0.38	330.79	100.0	0.3	-0.2	0.3	0.38
200.0	0.23	344.52	200.0	0.8	-0.4	0.9	0.17
300.0	0.13	354.37	300.0	1.1	-0.4	1.2	0.10
400.0	0.08	302.48	400.0	1.2	-0.5	1.3	0.10
500.0	0.08	206.93	500.0	1.2	-0.6	1.3	0.12
600.0	0.13	177.54	600.0	1.0	-0.6	1.2	0.07
700.0	0.21	164.33	700.0	0.7	-0.6	0.9	0.09
800.0	0.17	179.39	800.0	0.4	-0.5	0.6	0.06
900.0	0.10	155.10	900.0	0.2	-0.5	0.3	0.09
1,000.0	0.11	192.82	1,000.0	0.0	-0.5	0.2	0.07

Received
Office of Oil & Gas
AUG 27 2015

95.02126



EOW Completion Report



Company:	Antero Resources	Local Co-ordinate Reference:	Well Weigle Unit 1H
Project:	Tyler County WW	TVD Reference:	Weigle Unit 1H GL 1201' + 24' RKB @ 1225.0usft
Site:	Weigle / Klondike / Pad	MD Reference:	Weigle Unit 1H GL 1201' + 24' RKB @ 1225.0usft
Well:	Weigle Unit 1H	North Reference:	Grid
Wellbore:	Original Wellpath	Survey Calculation Method:	Minimum Curvature
Design:	As Drilled	Database:	Oklahoma District

Survey

MD (usft)	Inc (°)	Azi (azimuth) (°)	TVD (usft)	N/S (usft)	E/W (usft)	V. Sec (usft)	DLeg (°/100usft)
1,100.0	0.07	101.75	1,100.0	-0.1	-0.4	0.1	0.13
1,200.0	0.07	10.60	1,200.0	0.0	-0.4	0.1	0.10
1,300.0	0.12	341.00	1,300.0	0.1	-0.4	0.2	0.07
1,400.0	0.07	319.64	1,400.0	0.3	-0.5	0.4	0.06
1,500.0	0.10	321.39	1,500.0	0.4	-0.6	0.5	0.03
1,600.0	0.05	330.59	1,600.0	0.5	-0.6	0.7	0.05
1,700.0	0.07	12.20	1,700.0	0.6	-0.6	0.8	0.05
1,800.0	0.11	64.03	1,800.0	0.7	-0.5	0.8	0.09
1,900.0	0.11	73.81	1,900.0	0.7	-0.4	0.8	0.02
2,000.0	0.21	89.99	2,000.0	0.8	-0.1	0.8	0.11
2,100.0	0.17	75.07	2,100.0	0.8	0.2	0.7	0.06
2,200.0	0.20	108.24	2,200.0	0.8	0.6	0.6	0.11
2,300.0	0.20	98.41	2,300.0	0.7	0.9	0.4	0.03
2,400.0	0.12	294.59	2,400.0	0.7	1.0	0.4	0.32
2,500.0	0.21	290.51	2,500.0	0.8	0.7	0.6	0.09
2,600.0	0.24	301.54	2,600.0	1.0	0.4	0.8	0.05
2,700.0	0.40	276.76	2,700.0	1.2	-0.2	1.2	0.21
2,800.0	0.42	280.95	2,800.0	1.3	-0.9	1.5	0.04
2,900.0	0.65	288.92	2,900.0	1.5	-1.8	2.0	0.24
3,000.0	0.69	290.61	3,000.0	1.9	-2.9	2.8	0.04
3,100.0	0.72	279.16	3,100.0	2.2	-4.1	3.5	0.14
3,200.0	0.56	278.31	3,200.0	2.4	-5.2	4.0	0.16
3,300.0	0.32	271.07	3,300.0	2.5	-5.9	4.3	0.25
3,400.0	0.31	280.53	3,400.0	2.5	-6.5	4.6	0.05
3,500.0	0.29	279.43	3,500.0	2.6	-7.0	4.8	0.02
3,600.0	0.24	272.84	3,600.0	2.7	-7.4	5.0	0.06
3,700.0	0.49	251.40	3,700.0	2.6	-8.1	5.1	0.28
3,800.0	0.67	261.67	3,799.9	2.3	-9.0	5.2	0.21
3,900.0	0.71	260.32	3,899.9	2.1	-10.2	5.5	0.04
4,000.0	0.56	273.56	3,999.9	2.1	-11.3	5.8	0.21
4,100.0	0.44	276.18	4,099.9	2.1	-12.2	6.1	0.12
4,200.0	0.39	259.56	4,199.9	2.1	-12.9	6.4	0.13
4,300.0	0.50	257.10	4,299.9	2.0	-13.7	6.5	0.11
4,400.0	0.45	268.57	4,399.9	1.9	-14.5	6.6	0.11
4,500.0	0.39	282.67	4,499.9	1.9	-15.2	6.9	0.12
4,600.0	0.29	276.36	4,599.9	2.0	-15.8	7.2	0.11
4,700.0	0.42	220.61	4,699.9	1.8	-16.3	7.2	0.35
4,800.0	0.47	205.32	4,799.9	1.1	-16.7	6.7	0.13
4,900.0	0.57	212.95	4,899.9	0.3	-17.2	6.1	0.12
5,000.0	0.49	218.42	4,999.9	-0.4	-17.7	5.6	0.09
5,100.0	0.51	225.37	5,099.9	-1.1	-18.3	5.2	0.06
5,200.0	0.62	232.72	5,199.9	-1.7	-19.0	4.8	0.13
5,300.0	0.66	235.97	5,299.9	-2.4	-19.9	4.5	0.05
5,400.0	0.58	245.42	5,399.9	-2.9	-20.9	4.3	0.13

Received
Office of Oil & Gas
AUG 17 2015

95.02126



EOW Completion Report



Company:	Antero Resources	Local Co-ordinate Reference:	Well Weigle Unit 1H
Project:	Tyler County WV	TVD Reference:	Weigle Unit 1H GL 1201' + 24' RKB @ 1225.0usft
Site:	Weigle / Klondike / Pad	MD Reference:	Weigle Unit 1H GL 1201' + 24' RKB @ 1225.0usft
Well:	Weigle Unit 1H	North Reference:	Grid
Wellbore:	Original Wellpath	Survey Calculation Method:	Minimum Curvature
Design:	As Drilled	Database:	Oklahoma District

MD (usft)	Inc (°)	Azi (azimuth) (°)	TVD (usft)	N/S (usft)	E/W (usft)	V. Sec (usft)	DLeg (°/100usft)
5,500.0	0.46	238.48	5,499.9	-3.3	-21.7	4.2	0.14
5,600.0	0.32	233.62	5,599.9	-3.7	-22.2	4.0	0.14
5,600.1	0.32	233.40	5,600.0	-3.7	-22.2	4.0	1.02
5,667.0	0.34	252.38	5,666.9	-3.9	-22.6	4.0	0.17
5,761.0	0.08	226.93	5,760.9	-4.0	-22.9	4.0	0.29
5,855.0	0.32	261.19	5,854.9	-4.1	-23.2	4.0	0.27
5,949.0	0.34	292.96	5,948.9	-4.0	-23.7	4.2	0.19
6,040.0	1.41	135.99	6,039.9	-4.7	-23.2	3.4	1.90
6,075.0	5.58	93.34	6,074.8	-5.1	-21.2	2.3	13.26
6,106.0	10.99	76.23	6,105.5	-4.5	-16.8	1.4	18.99
6,135.0	15.17	72.19	6,133.7	-2.7	-10.5	1.0	14.75
6,169.0	17.98	73.17	6,166.3	0.2	-1.2	0.6	8.31
6,200.0	20.27	73.56	6,195.6	3.1	8.5	0.1	7.40
6,229.0	22.94	74.48	6,222.5	6.0	18.8	-0.6	9.28
6,263.0	26.42	74.36	6,253.4	9.9	32.4	-1.6	10.24
6,294.0	30.05	76.61	6,280.7	13.5	46.6	-3.0	12.20
6,323.0	34.56	77.62	6,305.2	17.0	61.7	-4.8	15.66
6,357.0	36.97	76.86	6,332.8	21.4	81.1	-7.2	7.21
6,361.0	37.48	76.71	6,336.0	21.9	83.5	-7.5	13.07
Sycamore							
6,388.0	40.96	75.75	6,356.9	26.0	100.0	-9.3	13.07
6,417.0	45.37	74.41	6,378.1	31.1	119.2	-10.9	15.53
6,451.0	49.50	71.67	6,401.1	38.4	143.1	-12.1	13.52
6,482.0	52.39	70.91	6,420.6	46.1	165.9	-12.5	9.51
6,511.0	55.06	71.28	6,437.8	53.7	188.1	-12.8	9.26
6,545.0	56.50	69.07	6,456.9	63.3	214.5	-12.8	6.84
6,576.0	57.65	63.23	6,473.7	73.8	238.3	-10.9	16.24
6,605.0	59.01	57.71	6,489.0	85.9	259.7	-6.6	16.86
6,639.0	60.07	54.79	6,506.2	102.2	284.1	0.5	8.03
6,654.0	60.62	53.00	6,513.6	109.9	294.6	4.2	11.02
Middlesex							
6,671.0	61.28	50.99	6,521.9	119.1	306.3	8.8	11.02
6,699.0	63.24	46.49	6,534.9	135.4	324.9	17.9	15.85
6,734.0	64.89	42.62	6,550.2	157.8	347.0	31.6	11.00
6,765.0	65.21	40.22	6,563.3	178.9	365.6	45.2	7.09
6,793.0	65.02	37.69	6,575.1	198.7	381.6	58.4	8.22
6,828.0	65.13	33.96	6,589.9	224.4	400.2	76.4	9.67
6,859.0	65.73	30.21	6,602.7	248.3	415.1	93.8	11.17
6,886.0	66.52	26.75	6,613.7	270.0	426.9		12.09
Burkett							
6,887.0	66.55	26.62	6,614.1	270.8	427.3	110.9	12.09
6,922.0	66.83	22.93	6,627.9	300.0	440.8	133.8	9.72
6,953.0	67.44	20.28	6,640.0	326.5	451.3	155.3	8.12
6,959.0	67.78	19.59	6,642.3	331.7	453.2	159.6	12.02
Tully							

Received
Office of Oil & Gas
AUG 17 2015



95-02126

EOW Completion Report



Company:	Antero Resources	Local Co-ordinate Reference:	Well Weigle Unit 1H
Project:	Tyler County WV	TVD Reference:	Weigle Unit 1H GL 1201' + 24' RKB @ 1225.0usft
Site:	Weigle / Klondike / Pad	MD Reference:	Weigle Unit 1H GL 1201' + 24' RKB @ 1225.0usft
Well:	Weigle Unit 1H	North Reference:	Grid
Wellbore:	Original Wellpath	Survey Calculation Method:	Minimum Curvature
Design:	As Drilled	Database:	Oklahoma District

Survey

MD (usft)	Inc (°)	Azi (azimuth) (°)	TVD (usft)	N/S (usft)	E/W (usft)	V. Sec (usft)	DLeg (°/100usft)
6,985.0	69.29	16.65	6,651.8	354.7	460.7	178.7	12.02
7,016.0	72.08	12.84	6,662.0	383.0	468.1	202.8	14.68
7,047.0	74.88	9.04	6,670.8	412.2	473.8	228.4	14.82
7,079.0	77.17	5.01	6,678.6	443.0	477.6	256.1	14.16
7,100.0	78.69	1.58	6,683.0	463.5	478.7	275.0	17.54
Marcellus							
7,110.0	79.43	359.96	6,684.9	473.3	478.9	284.2	17.54
7,141.0	81.78	355.25	6,689.9	503.9	477.6	313.4	16.80
7,173.0	82.72	352.98	6,694.2	535.4	474.3	344.2	7.62
7,235.0	84.58	350.45	6,701.1	596.4	465.5	404.6	5.04
7,264.0	86.26	345.62	6,703.4	624.6	459.5	433.2	17.58
7,333.0	90.75	338.99	6,705.2	690.3	438.5	502.1	11.60
7,428.0	90.31	339.95	6,704.3	779.2	405.2	597.1	1.11
7,522.0	90.31	340.57	6,703.8	867.7	373.4	691.0	0.66
7,616.0	90.31	339.78	6,703.3	956.1	341.6	785.0	0.84
7,710.0	90.66	339.87	6,702.5	1,044.4	309.1	879.0	0.38
7,804.0	88.20	340.30	6,703.5	1,132.7	277.1	973.0	2.66
7,898.0	88.37	340.30	6,706.3	1,221.2	245.5	1,067.0	0.18
7,992.0	89.78	340.66	6,707.8	1,309.8	214.1	1,161.0	1.55
8,086.0	90.00	340.28	6,708.0	1,398.4	182.6	1,255.0	0.47
8,180.0	89.96	339.87	6,708.0	1,486.8	150.6	1,349.0	0.44
8,274.0	89.60	337.76	6,708.4	1,574.4	116.6	1,442.9	2.28
8,368.0	90.04	337.58	6,708.7	1,661.3	80.9	1,536.8	0.51
8,463.0	89.69	339.25	6,708.9	1,749.7	46.0	1,631.8	1.80
8,557.0	89.43	340.66	6,709.6	1,838.0	13.8	1,725.8	1.53
8,651.0	89.60	342.33	6,710.4	1,927.1	-16.1	1,819.7	1.79
8,745.0	89.87	342.41	6,710.8	2,016.7	-44.6	1,913.7	0.30
8,839.0	88.99	341.27	6,711.8	2,106.0	-73.8	2,007.6	1.53
8,933.0	90.04	339.51	6,712.6	2,194.5	-105.4	2,101.6	2.18
9,027.0	89.87	339.78	6,712.7	2,282.7	-138.1	2,195.6	0.34
9,122.0	91.45	343.38	6,711.6	2,372.8	-168.1	2,290.6	4.14
9,216.0	91.01	342.59	6,709.5	2,462.7	-195.6	2,384.4	0.96
9,310.0	91.36	339.69	6,707.6	2,551.6	-226.0	2,478.4	3.11
9,404.0	90.04	339.16	6,706.4	2,639.6	-259.0	2,572.4	1.51
9,498.0	91.19	341.80	6,705.4	2,728.2	-290.4	2,666.4	3.06
9,592.0	91.19	341.62	6,703.5	2,817.4	-319.9	2,760.3	0.19
9,687.0	91.63	340.57	6,701.1	2,907.2	-350.7	2,855.3	1.20
9,780.0	91.19	339.51	6,698.9	2,994.6	-382.4	2,948.3	1.23
9,875.0	91.54	339.87	6,696.6	3,083.7	-415.4	3,043.2	0.53
9,969.0	91.28	339.51	6,694.3	3,171.8	-448.0	3,137.2	0.47
10,063.0	91.45	340.83	6,692.0	3,260.2	-479.9	3,231.2	1.42
10,157.0	90.48	339.16	6,690.5	3,348.5	-512.0	3,325.1	2.05
10,251.0	90.48	339.16	6,689.7	3,436.4	-545.5	3,419.1	0.00
10,345.0	89.52	338.55	6,689.7	3,524.0	-579.4	3,513.1	1.21
10,440.0	89.60	339.43	6,690.4	3,612.7	-613.4	3,608.1	0.93

Received
Office of Oil & Gas
AUG 27 2015

95-02126



EOW Completion Report



Company:	Antero Resources	Local Co-ordinate Reference:	Well Weigle Unit 1H
Project:	Tyler County WV	TVD Reference:	Weigle Unit 1H GL 1201' + 24' RKB @ 1225.0usft
Site:	Weigle / Klondike / Pad	MD Reference:	Weigle Unit 1H GL 1201' + 24' RKB @ 1225.0usft
Well:	Weigle Unit 1H	North Reference:	Grid
Wellbore:	Original Wellpath	Survey Calculation Method:	Minimum Curvature
Design:	As Drilled	Database:	Oklahoma District

MD (usft)	Inc (")	Azi (azimuth) (°)	TVD (usft)	N/S (usft)	E/W (usft)	V. Sec (usft)	DLeg (°/100usft)
10,533.0	91.54	340.57	6,689.5	3,700.1	-645.2	3,701.0	2.42
10,628.0	91.45	341.18	6,687.0	3,789.8	-676.3	3,796.0	0.65
10,722.0	89.96	340.66	6,685.8	3,878.7	-707.1	3,890.0	1.68
10,816.0	90.31	341.18	6,685.6	3,967.5	-737.8	3,984.0	0.67
10,910.0	90.48	341.27	6,685.0	4,056.5	-768.1	4,078.0	0.20
11,004.0	90.40	341.18	6,684.2	4,145.5	-798.3	4,172.0	0.13
11,098.0	90.13	340.22	6,683.8	4,234.2	-829.4	4,266.0	1.06
11,192.0	90.31	339.60	6,683.5	4,322.5	-861.7	4,359.9	0.69
11,287.0	90.48	338.63	6,682.8	4,411.2	-895.5	4,454.9	1.04
11,381.0	88.90	340.83	6,683.3	4,499.4	-928.1	4,548.9	2.88
11,475.0	89.16	341.01	6,684.9	4,588.2	-958.8	4,642.9	0.34
11,569.0	89.60	341.10	6,685.9	4,677.1	-989.3	4,736.9	0.48
11,663.0	87.93	340.83	6,687.9	4,766.0	-1,020.0	4,830.8	1.80
11,754.0	88.81	339.87	6,690.5	4,851.6	-1,050.6	4,921.8	1.43
11,846.0	88.90	339.95	6,692.4	4,938.0	-1,082.2	5,013.8	0.13
11,938.0	87.76	340.04	6,695.0	5,024.4	-1,113.6	5,105.7	1.24
12,029.0	88.90	340.48	6,697.7	5,110.0	-1,144.3	5,196.7	1.34
12,120.0	89.16	340.74	6,699.2	5,195.9	-1,174.6	5,287.7	0.40
12,211.0	87.93	340.13	6,701.6	5,281.6	-1,205.0	5,378.7	1.51
12,302.0	91.45	341.10	6,702.0	5,367.4	-1,235.2	5,469.6	4.01
12,393.0	90.92	340.39	6,700.2	5,453.3	-1,265.2	5,560.6	0.97
12,485.0	90.92	342.33	6,698.7	5,540.5	-1,294.6	5,652.6	2.11
12,575.0	89.52	340.74	6,698.3	5,625.8	-1,323.1	5,742.6	2.35
12,667.0	89.70	340.78	6,699.0	5,712.7	-1,353.4	5,834.6	0.20
12,758.0	90.22	341.62	6,699.0	5,798.8	-1,382.8	5,925.5	1.09
12,853.0	89.60	339.25	6,699.2	5,888.3	-1,414.6	6,020.5	2.58
12,947.0	89.96	339.16	6,699.5	5,976.2	-1,447.9	6,114.5	0.39
13,041.0	89.69	338.72	6,699.8	6,063.9	-1,481.7	6,208.5	0.55
13,135.0	89.96	340.48	6,700.1	6,152.0	-1,514.5	6,302.5	1.89
13,230.0	89.52	339.51	6,700.5	6,241.3	-1,547.0	6,397.5	1.12
13,323.0	91.28	339.78	6,699.9	6,328.5	-1,579.3	6,490.5	1.91
13,417.0	91.63	340.39	6,697.5	6,416.8	-1,611.3	6,584.4	0.75
13,512.0	90.22	340.22	6,696.0	6,506.3	-1,643.4	6,679.4	1.49
13,606.0	89.60	340.66	6,696.1	6,594.8	-1,674.8	6,773.4	0.81
13,700.0	88.29	340.13	6,697.9	6,683.4	-1,706.4	6,867.4	1.50
13,794.0	87.58	339.25	6,701.2	6,771.5	-1,739.0	6,961.3	1.20
13,889.0	87.49	339.34	6,705.3	6,860.2	-1,772.5	7,056.2	0.13
13,983.0	89.43	340.66	6,707.9	6,948.5	-1,804.7	7,150.2	2.50
14,077.0	89.96	341.80	6,708.4	7,037.5	-1,834.9	7,244.2	1.34
14,171.0	89.52	341.62	6,708.8	7,126.8	-1,864.4	7,338.1	0.51
14,265.0	88.46	338.72	6,710.4	7,215.2	-1,896.3	7,432.1	3.28
14,359.0	90.04	339.25	6,711.7	7,302.9	-1,930.0	7,526.1	1.77
14,453.0	89.25	340.66	6,712.3	7,391.2	-1,962.2	7,620.1	1.72
14,547.0	89.96	341.71	6,712.9	7,480.2	-1,992.5	7,714.1	1.35

Received
Office of Oil & Gas
AUG 17 2015

95-02126



EOW Completion Report



Company:	Antero Resources	Local Co-ordinate Reference:	Well Weigle Unit 1H
Project:	Tyler County WV	TVD Reference:	Weigle Unit 1H GL 1201' + 24' RKB @ 1225.0usft
Site:	Weigle / Klondike / Pad	MD Reference:	Weigle Unit 1H GL 1201' + 24' RKB @ 1225.0usft
Well:	Weigle Unit 1H	North Reference:	Grid
Wellbore:	Original Wellpath	Survey Calculation Method:	Minimum Curvature
Design:	As Drilled	Database:	Oklahoma District

Survey								
MD (usft)	Inc (°)	Azi (azimuth) (°)	TVD (usft)	N/S (usft)	E/W (usft)	V. Sec (usft)	DLeg (°/100usft)	
14,641.0	89.87	341.71	6,713.0	7,569.4	-2,022.0	7,808.0	0.10	
14,735.0	89.96	340.74	6,713.2	7,658.4	-2,052.3	7,902.0	1.04	
14,830.0	90.13	341.01	6,713.1	7,748.2	-2,083.4	7,997.0	0.34	
14,924.0	90.13	339.69	6,712.9	7,836.7	-2,115.0	8,091.0	1.40	
15,018.0	89.87	338.81	6,712.9	7,924.6	-2,148.3	8,185.0	0.98	
15,112.0	90.04	338.20	6,713.0	8,012.1	-2,182.7	8,278.9	0.67	
15,206.0	88.99	338.81	6,713.8	8,099.5	-2,217.2	8,372.9	1.29	
15,300.0	89.78	340.48	6,714.8	8,187.7	-2,249.9	8,466.9	1.97	
15,394.0	89.96	339.78	6,715.0	8,276.1	-2,281.8	8,560.9	0.77	
15,488.0	89.70	339.84	6,715.3	8,364.3	-2,314.3	8,654.9	0.28	
15,581.0	89.78	339.16	6,715.7	8,451.4	-2,346.8	8,747.9	0.74	
15,676.0	90.57	341.27	6,715.4	8,540.8	-2,379.0	8,842.8	2.37	
15,770.0	90.48	340.48	6,714.5	8,629.6	-2,409.8	8,936.8	0.85	
15,864.0	90.04	339.60	6,714.1	8,717.9	-2,441.9	9,030.8	1.05	
15,959.0	89.34	338.20	6,714.6	8,806.6	-2,476.1	9,125.8	1.65	
16,053.0	89.52	339.34	6,715.6	8,894.2	-2,510.1	9,219.8	1.23	
16,147.0	89.96	339.60	6,716.0	8,982.2	-2,543.1	9,313.8	0.54	
16,242.0	89.52	341.18	6,716.4	9,071.7	-2,575.0	9,408.7	1.73	
16,336.0	89.78	342.06	6,717.0	9,160.9	-2,604.6	9,502.7	0.98	
16,430.0	90.48	342.41	6,716.8	9,250.4	-2,633.3	9,596.7	0.83	
16,524.0	90.48	341.62	6,716.0	9,339.8	-2,662.3	9,690.6	0.84	
16,618.0	90.31	340.74	6,715.3	9,428.8	-2,692.6	9,784.6	0.95	
16,712.0	89.96	339.60	6,715.1	9,517.2	-2,724.5	9,878.6	1.27	
16,807.0	89.60	338.81	6,715.5	9,606.0	-2,758.2	9,973.6	0.91	
16,901.0	89.78	338.11	6,716.0	9,693.5	-2,792.8	10,067.5	0.77	
16,995.0	89.78	338.81	6,716.3	9,780.9	-2,827.3	10,161.5	0.74	
17,089.0	88.90	340.74	6,717.4	9,869.1	-2,859.8	10,255.5	2.26	
17,183.0	89.60	342.41	6,718.7	9,958.3	-2,889.5	10,349.4	1.93	
17,277.0	89.60	341.97	6,719.3	10,047.8	-2,918.2	10,443.4	0.47	
17,371.0	91.10	342.33	6,718.7	10,137.2	-2,947.0	10,537.3	1.64	
17,465.0	91.54	342.33	6,716.6	10,226.8	-2,975.5	10,631.2	0.47	
17,559.0	90.34	341.16	6,715.0	10,316.0	-3,005.0	10,725.2	1.78	
17,653.0	90.57	341.71	6,714.3	10,405.1	-3,034.9	10,819.2	0.63	
17,777.0	90.92	341.62	6,712.7	10,522.8	-3,073.9	10,943.1	0.29	
17,829.0	90.50	340.30	6,712.0	10,572.0	-3,090.9	10,995.1	2.66	

Received
Office of Oil & Gas
AUG 17 2015

95-02126



EOW Completion Report



Company:	Antero Resources	Local Co-ordinate Reference:	Well Weigle Unit 1H
Project:	Tyler County WV	TVD Reference:	Weigle Unit 1H GL 1201' + 24' RKB @ 1225.0usft
Site:	Weigle / Klondike / Pad	MD Reference:	Weigle Unit 1H GL 1201' + 24' RKB @ 1225.0usft
Well:	Weigle Unit 1H	North Reference:	Grid
Wellbore:	Original Wellpath	Survey Calculation Method:	Minimum Curvature
Design:	As Drilled	Database:	Oklahoma District

Design Annotations

Measured Depth (usft)	Vertical Depth (usft)	Local Coordinates		Comment
		+N/-S (usft)	+E/-W (usft)	
6,361.0	6,336.0	21.9	83.5	Sycamore
6,654.0	6,513.6	109.9	294.6	Middlesex
6,886.0	6,613.7	270.0	426.9	Burkett
6,959.0	6,642.3	331.7	453.2	Tully
7,100.0	6,683.0	463.5	478.7	Marcellus

Checked By: _____ Approved By: _____ Date: _____

Received
Office of Oil & Gas
AUG 17 2015