

LATITUDE 39°22'30"

9,865'

1,523' TO BOTTOM HOLE
LATITUDE 39°25'00"

3,548'

LONGITUDE 81°00'00"

12,750' TO BOTTOM HOLE

LONGITUDE 80°57'30"

Antero Resources Corporation
Well No. Freeland Unit 2H
47-095-02127 (AS DRILLED)

WELL NO. 2H
BOTTOM HOLE

2H TOP HOLE

AS DRILLED DATA:
WELL 2H TOP HOLE INFORMATION:
N: 318,654ft E: 1,577,835ft
LAT: 39°21'54.94" LON: 80°59'35.62"
BOTTOM HOLE INFORMATION:
N: 324,683ft E: 1,574,497ft
LAT: 39°22'53.98" LON: 81°00'19.39"
WEST VIRGINIA COORDINATE SYSTEM OF 1927 NORTH ZONE. ZONE WAS DERIVED FROM MEASUREMENTS TAKEN WITH TRIMBLE GEOXT SUBMETER MAPPING GRADE GPS UNIT. PLAT ORIENTATION, CORNER, AND WELL REFERENCE TIE LINES ARE BASED ON GRID NORTH.

(NAD) 83 (UTM) ZONE 17 COORDS:
WELL 2H TOP HOLE INFORMATION:
N: 4,357,320m E: 500,598
BOTTOM HOLE INFORMATION:
N: 4,359,140m E: 499,551m

- NOTE**
1. NO OCCUPIED DWELLINGS OR BUILDINGS TWO THOUSAND FIVE HUNDRED (2,500) SQUARE FEET OR LARGER USED TO HOUSE OR SHELTER DAIRY CATTLE OR POULTRY HUSBANDRY ARE LOCATED WITHIN SIX HUNDRED TWENTY-FIVE (625) FEET OF THE CENTER OF THE WELL PAD.
 2. TOP HOLE DATA SHOWN HEREON WAS PROVIDED BY ALLEGHENY SURVEYS, INC.
 3. AS DRILLED DATA WAS PROVIDED BY ANTERO RESOURCES CORPORATION.
 4. WLS IS NOT CERTIFYING THE DATA AND INFORMATION PROVIDED LISTED IN NOTES 2 AND 3, ONLY THE RELATIONSHIP TO THE DATA AND INFORMATION PROVIDED TO THE LEASE AND INFORMATION PROVIDED TO THE LEASE BOUNDARIES.
 5. WLS IS BY NO MEANS RESPONSIBLE FOR ANY ERRORS OR INACCURACIES WITH THE DATA AND INFORMATION THAT HAS BEEN PROVIDED.

WV NORTH ZONE GRID NORTH

GREGORY A. WESTBROOK ET AL
D.B. 259 PG. 127
T.M. 8 PAR. 9 J
53,164 AC. ±

GREGORY A. WESTBROOK ET AL
D.B. 283 PG. 490
T.M. 8 PAR. 9
69,243 AC. ±

STEFAN J. GUN ET AL
D.B. 214 PG. 20
T.M. 12 PAR. 20
5 AC. ±

ROGER CURRY ET AL
D.B. 349 PG. 99
T.M. 12 PAR. 1
43,639 AC. ±

GARY W. FREELAND ET AL
D.B. 349 PG. 86
T.M. 12 PAR. 2,3
49,465 AC. ±

RICHARD B. REYNOLDS LEASE

REBAR FOUND

JON T. WILSON
D.B. 376 PG. 726
T.M. 12 PAR. 2,1
17,904 AC. ±

NELSON E. BROUGHMAN
D.B. 344 PG. 223
T.M. 12 PAR. 2
10,743 AC. ±

DARYL R. JACKSON JR. ET AL
D.B. 325 PG. 21
T.M. 12 PAR. 2,2
37,011 AC. ±

DAVID M. HARTLEY
D.B. 271 PG. 421
T.M. 12 PAR. 27
101,38 AC. ±

DAVID M. HARTLEY
D.B. 271 PG. 421
T.M. 12 PAR. 23
125,83 AC. ±

DAVID M. HARTLEY
D.B. 271 PG. 421
T.M. 12 PAR. 21
28 AC. ±

DAVID M. HARTLEY
D.B. 271 PG. 421
T.M. 12 PAR. 12
28 AC. ±

DAVID M. HARTLEY
D.B. 271 PG. 421
T.M. 12 PAR. 12
28 AC. ±

DAVID M. HARTLEY
D.B. 271 PG. 421
T.M. 12 PAR. 12
28 AC. ±

DAVID M. HARTLEY
D.B. 271 PG. 421
T.M. 12 PAR. 12
28 AC. ±

DAVID M. HARTLEY
D.B. 271 PG. 421
T.M. 12 PAR. 12
28 AC. ±

DAVID M. HARTLEY
D.B. 271 PG. 421
T.M. 12 PAR. 12
28 AC. ±

DAVID M. HARTLEY
D.B. 271 PG. 421
T.M. 12 PAR. 12
28 AC. ±

DAVID M. HARTLEY
D.B. 271 PG. 421
T.M. 12 PAR. 12
28 AC. ±

DAVID M. HARTLEY
D.B. 271 PG. 421
T.M. 12 PAR. 12
28 AC. ±

DAVID M. HARTLEY
D.B. 271 PG. 421
T.M. 12 PAR. 12
28 AC. ±

DAVID M. HARTLEY
D.B. 271 PG. 421
T.M. 12 PAR. 12
28 AC. ±

DAVID M. HARTLEY
D.B. 271 PG. 421
T.M. 12 PAR. 12
28 AC. ±

DAVID M. HARTLEY
D.B. 271 PG. 421
T.M. 12 PAR. 12
28 AC. ±

DAVID M. HARTLEY
D.B. 271 PG. 421
T.M. 12 PAR. 12
28 AC. ±

DAVID M. HARTLEY
D.B. 271 PG. 421
T.M. 12 PAR. 12
28 AC. ±

DAVID M. HARTLEY
D.B. 271 PG. 421
T.M. 12 PAR. 12
28 AC. ±

DAVID M. HARTLEY
D.B. 271 PG. 421
T.M. 12 PAR. 12
28 AC. ±

DAVID M. HARTLEY
D.B. 271 PG. 421
T.M. 12 PAR. 12
28 AC. ±

DAVID M. HARTLEY
D.B. 271 PG. 421
T.M. 12 PAR. 12
28 AC. ±

DAVID M. HARTLEY
D.B. 271 PG. 421
T.M. 12 PAR. 12
28 AC. ±

DAVID M. HARTLEY
D.B. 271 PG. 421
T.M. 12 PAR. 12
28 AC. ±

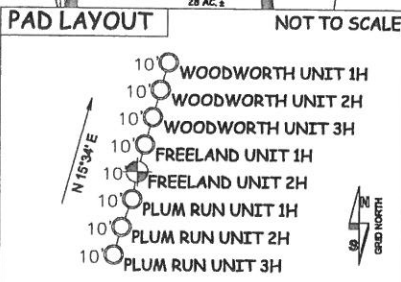
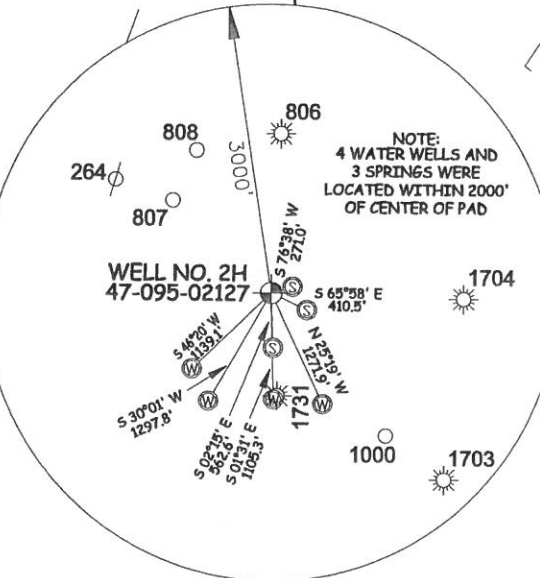
DAVID M. HARTLEY
D.B. 271 PG. 421
T.M. 12 PAR. 12
28 AC. ±

DAVID M. HARTLEY
D.B. 271 PG. 421
T.M. 12 PAR. 12
28 AC. ±

DAVID M. HARTLEY
D.B. 271 PG. 421
T.M. 12 PAR. 12
28 AC. ±

DAVID M. HARTLEY
D.B. 271 PG. 421
T.M. 12 PAR. 12
28 AC. ±

DAVID M. HARTLEY
D.B. 271 PG. 421
T.M. 12 PAR. 12
28 AC. ±



JOB # 13-042WA
DRAWING # FREELAND2HAD
SCALE 1" = 1000'
MINIMUM DEGREE OF ACCURACY SUBMETER
PROVEN SOURCE OF ELEV. SUBMETER MAPPING GRADE GPS



STATE OF WEST VIRGINIA, DIVISION OF ENVIRONMENTAL PROTECTION, OFFICE OF OIL AND GAS

WILLOW LAND SURVEYING PLLC
P.O. BOX 17
PENNSBORO, WV 26415

- LEGEND**
- Surface Owner Boundary Lines +/-
 - Interior Surface Tracts +/-
 - Existing Fence
 - Found monument, as noted
 - Proposed Well Path
 - As Drilled Well Path

STATE OF WEST VIRGINIA DEPARTMENT OF ENERGY DIVISION OF OIL AND GAS

WELL TYPE: OIL GAS LIQUID INJECTION WASTE DISPOSAL
(IF "GAS") PRODUCTION STORAGE DEEP SHALLOW

LOCATION: ELEVATION 1,031' ORIGINAL - 1,021' AS-DRILLED WATERSHED OUTLET MIDDLE ISLAND CREEK
QUADRANGLE PENNSBORO 7.5 (TOP HOLE) BENS RUN 7.5 (BOTTOM HOLE) DISTRICT MEADE COUNTY TYLER

SURFACE OWNER DAVID M. HARTLEY ACREAGE 21 ACRES +/-
OIL & GAS ROYALTY OWNER MIKE SAMMONS; HOWARD H. HARCHA, III ET AL; RODGER B. KING LEASE ACREAGE 28 AC.±; 115 AC.±; 43 AC.±
RICHARD B. REYNOLDS; BRANDI DEPHINO; 710 CORPORATION 100.38 AC.±; 122 ACRES±; 57 AC.±

PROPOSED WORK: DRILL CONVERT DRILL DEEPER REDRILL FRACTURE OR STIMULATE
PLUG OFF OLD FORMATION PERFORATE NEW FORMATION OTHER PHYSICAL CHANGE IN WELL (SPECIFY) (X) AS DRILLED PLUG & ABANDON CLEAN OUT & REPLUG
TARGET FORMATION MARCELLUS ESTIMATED DEPTH 6,260' TVD 13,206' MD

WELL OPERATOR ANTERO RESOURCES CORP. DESIGNATED AGENT DIANNA STAMPER
ADDRESS 1615 WYNKOOP STREET ADDRESS CT CORPORATION SYSTEM
DENVER, CO 80202 CHARLESTON, WV 25313

DATE 05/18/15
OPERATOR'S WELL# FREELAND UNIT #2H
API WELL # 47 - 095 - 02127
STATE COUNTY PERMIT

COUNTY NAME TYLER
PERMIT