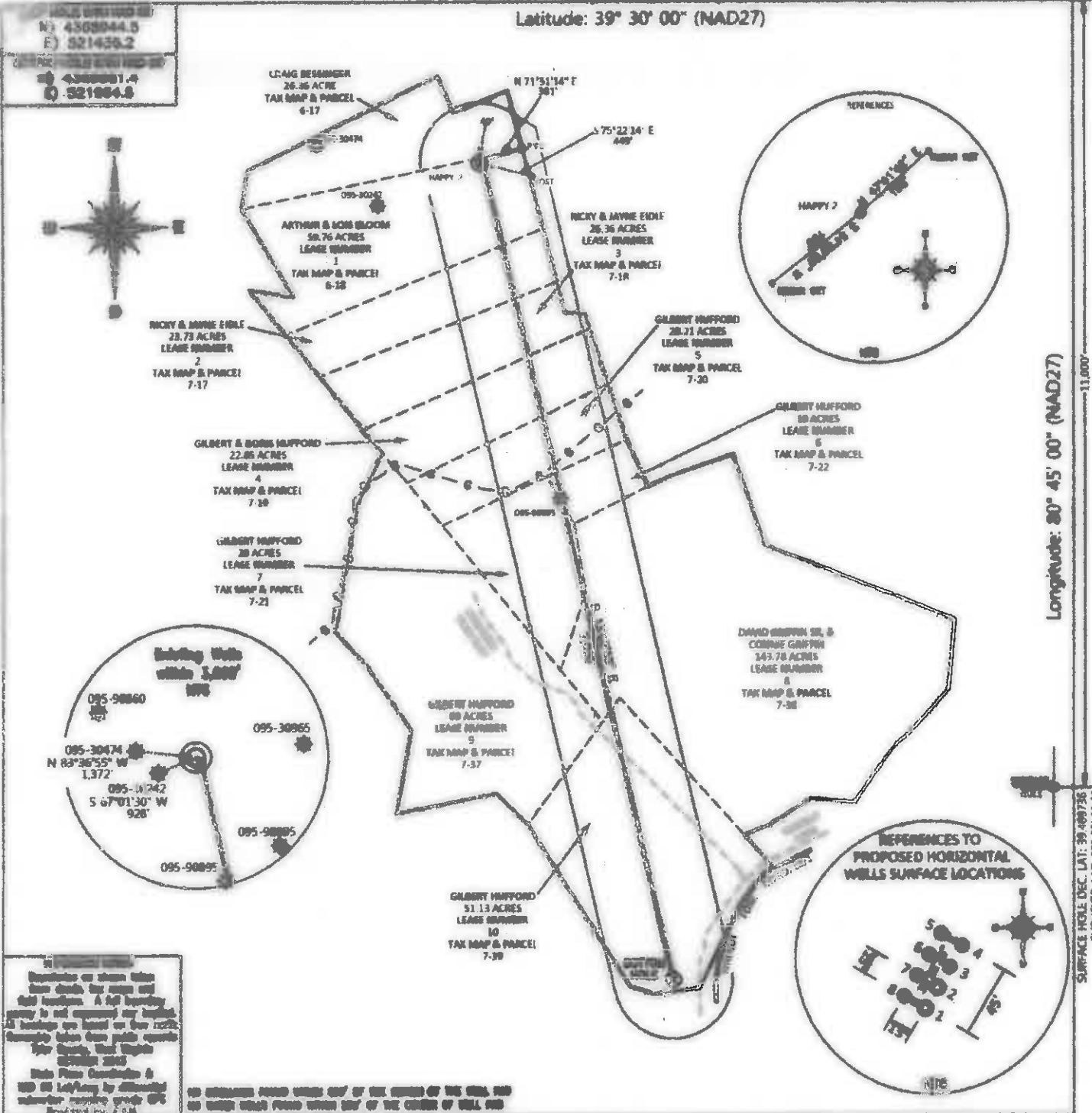


Latitude: 39° 30' 00" (NAD27)

Longitude: 80° 45' 00" (NAD27)

SURFACE HOLE DEC. LAT: 39 49 736 SURVEYED LAT: 39 28 11.1



INSTRUCTIONS TO CONTRACTOR
 Operator to show title from deeds for maps and field locations. A full boundary survey is not required nor needed. All bearings are based on true north. Generally taken from public records like deeds, plat maps, etc.
 State Plane Coordinate & 100 ft 1/4" long by 1/4" wide aluminum leveling grade 0% finished by G&G

NO DIMENSIONS SHOWN OTHER THAN ON THE CORNER OF THE WELL AND NO OTHER WELLS FOUND OTHER THAN ON THE CORNER OF WELL AND

FILE #: 201367
 DRAWING #: 2
 SCALE: 1" = 100'
 MINIMUM DEGREE OF ACCURACY: 1/300
 PROVEN SOURCE OF ELEVATION: SUBMETER MAPPING GRADE OPS

I, THE UNDERSIGNED, HEREBY CERTIFY THAT THIS PLAT IS CORRECT TO THE BEST OF MY KNOWLEDGE AND BELIEF AND SHOWS ALL THE INFORMATION REQUIRED BY LAW AND THE REGULATIONS ISSUED AND PRESCRIBED BY THE DEPARTMENT OF ENVIRONMENTAL PROTECTION.
 Signed: [Signature]
 L.L.S. #2124: Ernest J. Benchek III



(+) DENOTES LOCATION OF WELL ON UNITED STATES TOPOGRAPHIC MAPS
 WV DEP OFFICE OF OIL & GAS
 604 57TH STREET
 CHARLESTON, WV 25004

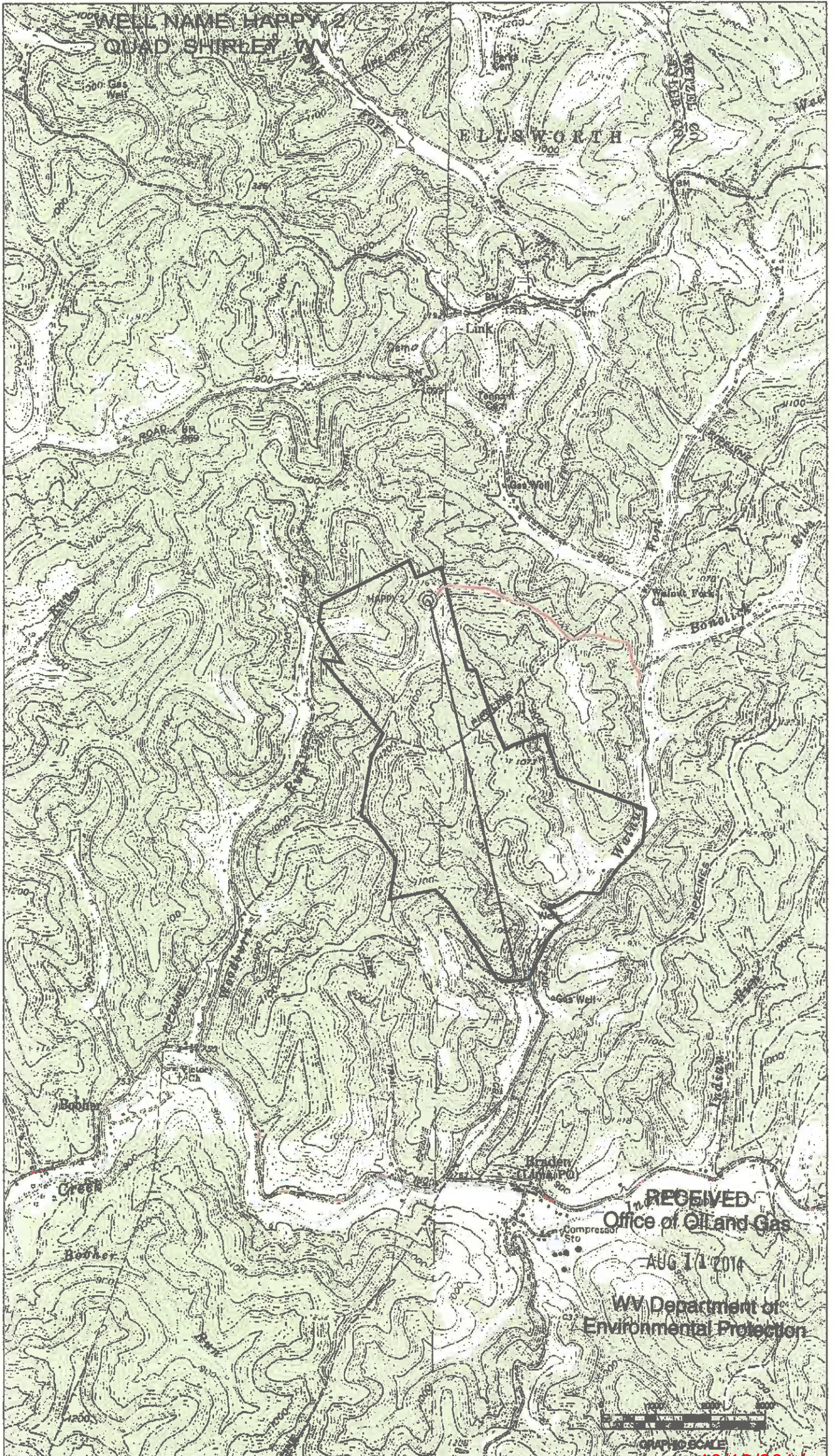
Well Type: Oil Waste Disposal Production Deep
 Gas Liquid Injection Storage Shallow

WATERSHED: OUTLET MIDDLE ISLAND CREEK ELEVATION: 1285'
 COUNTY/DISTRICT: TYLER/McELROY QUADRANGLE: SHIRLEY, WV
 SURFACE OWNER: ARTHUR & LOIS BLOOM ACREAGE: 59.76 +/-
 OIL & GAS ROYALTY OWNER: ARTHUR & LOIS BLOOM ACREAGE: 457.82 +/-
 LEASE NUMBERS: 1. 73842A1, 73842A2, 73842A3, 73842A4, 73842A5, 73842A6, 73842A7, 73842A8, 73842A9, 73842A10, 73842A11, 73842A12, 73842A13, 73842A14, 73842A15, 73842A16, 73842A17, 73842A18, 73842A19, 73842A20, 73842A21, 73842A22, 73842A23, 73842A24, 73842A25, 73842A26, 73842A27, 73842A28, 73842A29, 73842A30, 73842A31, 73842A32, 73842A33, 73842A34, 73842A35, 73842A36, 73842A37, 73842A38, 73842A39, 73842A40, 73842A41, 73842A42, 73842A43, 73842A44, 73842A45, 73842A46, 73842A47, 73842A48, 73842A49, 73842A50, 73842A51, 73842A52, 73842A53, 73842A54, 73842A55, 73842A56, 73842A57, 73842A58, 73842A59, 73842A60, 73842A61, 73842A62, 73842A63, 73842A64, 73842A65, 73842A66, 73842A67, 73842A68, 73842A69, 73842A70, 73842A71, 73842A72, 73842A73, 73842A74, 73842A75, 73842A76, 73842A77, 73842A78, 73842A79, 73842A80, 73842A81, 73842A82, 73842A83, 73842A84, 73842A85, 73842A86, 73842A87, 73842A88, 73842A89, 73842A90, 73842A91, 73842A92, 73842A93, 73842A94, 73842A95, 73842A96, 73842A97, 73842A98, 73842A99, 73842A100

DRILL CONVERT DRILL DEEPER NEDRILL FRACTURE OR STIMULATE
 PLUG OFF FORMATION PERFORATE NEW FORMATION PLUG & ABANDON
 CLEAN OUT & REPLUG OTHER CHANGE (SPECIFY): _____

TARGET FORMATION: MARCELLUS ESTIMATED DEPTH: TVD: 7,254' TMD: 15,210'
 WELL OPERATOR: JAY BEE OIL & GAS, LLC DESIGNATED AGENT: SHANE DOWELL
 ADDRESS: 3570 SHIELDS HILL ROAD ADDRESS: 3570 SHIELDS HILL ROAD
 CITY: CAIRO STATE: WV ZIP CODE: 26337 CITY: CAIRO STATE: WV ZIP CODE: 26337

10/10/2014



RECEIVED
Office of Oil and Gas

AUG 11 2014

WV Department of
Environmental Protection

