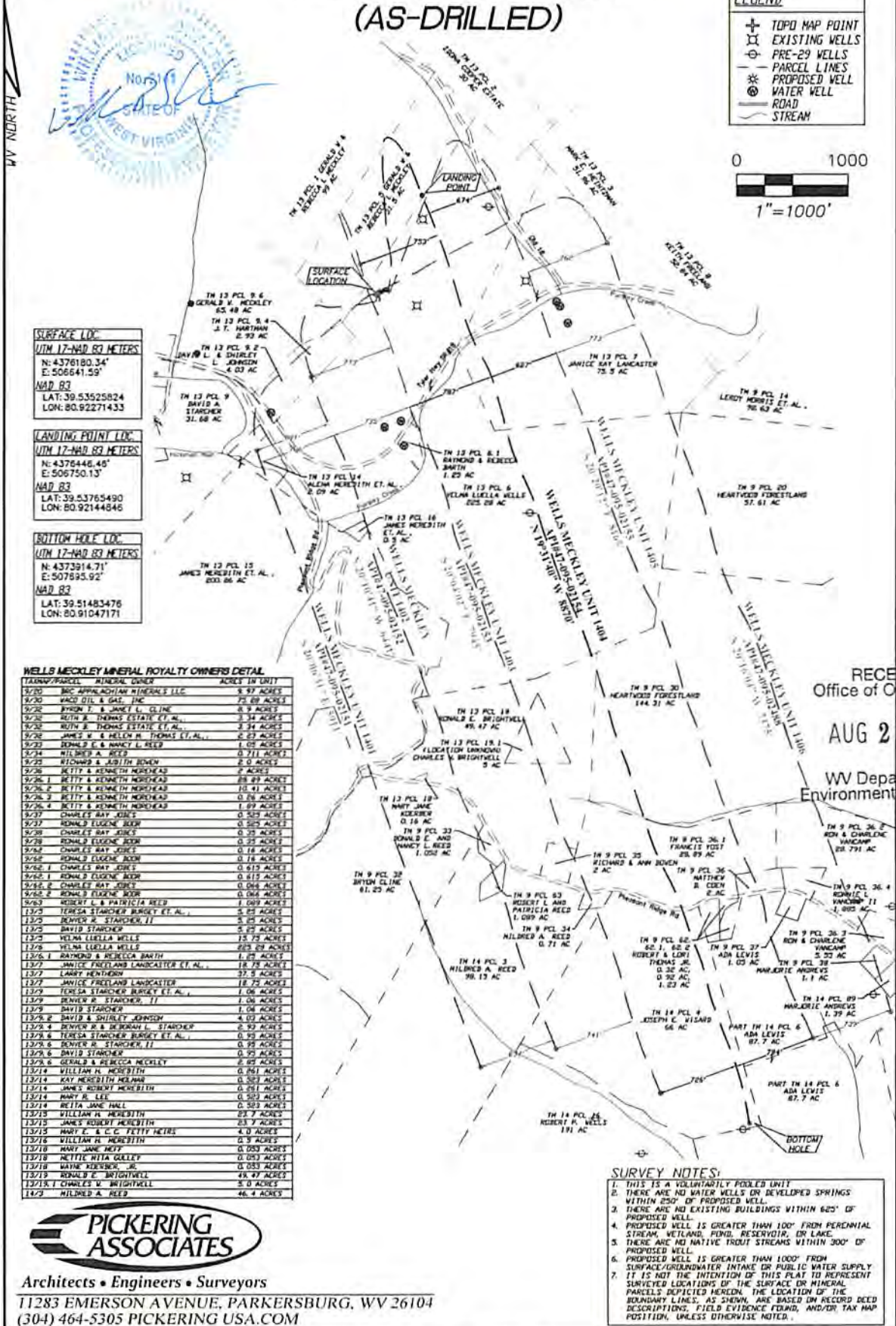


WELLS MECKLEY 1404 (AS-DRILLED)

02/15/2019



SURFACE LOC.
 UTM 17-NAD 83 METERS
 N: 4376180.34
 E: 506641.59
NAD 83
 LAT: 39.53525824
 LON: 80.92271433

LANDING POINT LOC.
 UTM 17-NAD 83 METERS
 N: 4376446.45
 E: 506750.13
NAD 83
 LAT: 39.53765490
 LON: 80.92144846

BOTTOM HOLE LOC.
 UTM 17-NAD 83 METERS
 N: 4373814.71
 E: 507895.92
NAD 83
 LAT: 39.51483476
 LON: 80.91047171

WELLS MECKLEY MINERAL ROYALTY OWNERS DETAIL

TAXMAP/PARCEL	MINERAL OWNER	ACRES IN UNIT
13/20	BOC APPALACHIAN MINERALS LLC	9.97 ACRES
13/20	WARD OIL & GAS, INC	72.89 ACRES
13/22	BYRON T. & JANE L. CLINE	8.9 ACRES
13/22	MUTA B. THOMAS ESTATE ET AL.	3.34 ACRES
13/22	MUTA B. THOMAS ESTATE ET AL.	3.34 ACRES
13/26	JAMES B. & HELEN B. THOMAS ET AL.	2.23 ACRES
13/22	RONALD E. & MARY L. REED	1.05 ACRES
13/24	MILDRED A. REED	0.711 ACRES
13/25	KEVIN & JUDITH BOWEN	2.0 ACRES
13/26	RETTY & KENNETH MORSHEAD	7 ACRES
13/26.1	RETTY & KENNETH MORSHEAD	28.89 ACRES
13/26.2	RETTY & KENNETH MORSHEAD	10.41 ACRES
13/26.3	RETTY & KENNETH MORSHEAD	0.26 ACRES
13/26.4	RETTY & KENNETH MORSHEAD	1.09 ACRES
13/27	CHARLES RAY JONES	0.583 ACRES
13/27	RONALD EUGENE BOON	0.583 ACRES
13/28	CHARLES RAY JONES	0.25 ACRES
13/28	RONALD EUGENE BOON	0.25 ACRES
13/28	CHARLES RAY JONES	0.18 ACRES
13/28	RONALD EUGENE BOON	0.18 ACRES
13/28.1	CHARLES RAY JONES	0.619 ACRES
13/28.1	RONALD EUGENE BOON	0.619 ACRES
13/28.2	CHARLES RAY JONES	0.046 ACRES
13/28.2	RONALD EUGENE BOON	0.046 ACRES
13/29	ROBERT L. & PATRICIA REED	1.089 ACRES
13/3	TERESA STANCHER BURGEE ET AL.	5.85 ACRES
13/3	BONNER R. STANCHER, II	5.25 ACRES
13/3	DAVID STANCHER	5.25 ACRES
13/3	WELMA LUELLA WELLS	15.75 ACRES
13/3	WELMA LUELLA WELLS	603.89 ACRES
13/36.1	RAYMOND & REBECCA BARTH	1.25 ACRES
13/37	JANICE FREELAND LANCASTER ET AL.	18.78 ACRES
13/37	LARRY HENTON	37.5 ACRES
13/37	JANICE FREELAND LANCASTER	18.75 ACRES
13/39	TERESA STANCHER BURGEE ET AL.	1.06 ACRES
13/39	BONNER R. STANCHER, II	1.06 ACRES
13/39	DAVID STANCHER	1.06 ACRES
13/39.2	DAVID & SHIRLEY JOHNSON	4.03 ACRES
13/39.4	BONNER R. STANCHER, II	2.52 ACRES
13/39.4	TERESA STANCHER BURGEE ET AL.	0.95 ACRES
13/39.6	BONNER R. STANCHER, II	0.95 ACRES
13/39.6	DAVID STANCHER	0.95 ACRES
13/39.8	GERALD & BECCA MECKLEY	2.42 ACRES
13/39.8	WILLIAM H. MERESTIN	0.951 ACRES
13/39.8	KAY MERESTIN MELMAN	0.503 ACRES
13/39.8	JAMES ROBERT MERESTIN	0.261 ACRES
13/39.8	MARY R. LEE	0.503 ACRES
13/39.8	BETTA JANE HALL	0.503 ACRES
13/39.8	WILLIAM H. MERESTIN	23.7 ACRES
13/39.8	JAMES ROBERT MERESTIN	23.7 ACRES
13/39.8	MARY E. & C.C. BETTY HETES	4.0 ACRES
13/39.8	WILLIAM H. MERESTIN	0.9 ACRES
13/39.8	MARY JANE NEFF	0.053 ACRES
13/39.8	RETTY WILIA GALLEY	0.053 ACRES
13/39.8	WAYNE KREIBER, JR.	0.053 ACRES
13/39.8	RONALD E. BRIGHTWELL	48.49 ACRES
13/39.8	CHARLES W. BRIGHTWELL	5.0 ACRES
13/39.8	MILDRED A. REED	46.4 ACRES

RECEIVED
 Office of Oil and Gas
 AUG 20 2018
 WV Department of
 Environmental Protection

SURVEY NOTES:

1. THIS IS A VOLUNTARILY POOLED UNIT
2. THERE ARE NO WATER WELLS OR DEVELOPED SPRINGS WITHIN 250' OF PROPOSED WELL.
3. THERE ARE NO EXISTING BUILDINGS WITHIN 600' OF PROPOSED WELL.
4. PROPOSED WELL IS GREATER THAN 100' FROM PERENNIAL STREAM, WETLAND, POND, RESERVOIR, OR LAKE.
5. THERE ARE NO NATIVE FRESH STREAMS WITHIN 300' OF PROPOSED WELL.
6. PROPOSED WELL IS GREATER THAN 1000' FROM SURFACE/GROUNDWATER INTAKE OR PUBLIC WATER SUPPLY.
7. IT IS NOT THE INTENTION OF THIS PLAN TO REPRESENT SURVEYED LOCATIONS OF THE SURFACE OR MINERAL PARCELS DEPICTED HEREON. THE LOCATION OF THE BOUNDARY LINES, AS SHOWN, ARE BASED ON RECORD DEED DESCRIPTIONS, FIELD EVIDENCE FOUND, AND/OR TAX MAP POSITION, UNLESS OTHERWISE NOTED.



Architects • Engineers • Surveyors
 11283 EMERSON AVENUE, PARKERSBURG, WV 26104
 (304) 464-5305 PICKERING USA.COM

API WELL#: 47-095-02154
 STATE COUNTY PERMIT
 OPERATOR'S WELL#: **WELLS MECKLEY 1404**

WELL OPERATOR TRIAD HUNTER, LLC (SUBSIDIARY OF BLUE RIDGE MOUNTAIN RESOURCES) ADDRESS 125 PUTNAM ST. MARIETTA OH 45750
 DESIGNATED AGENT KIMBERLY ARNOLD ADDRESS PO BOX 154 WAVERLY WV 26184 DATE: 3/14/2018