



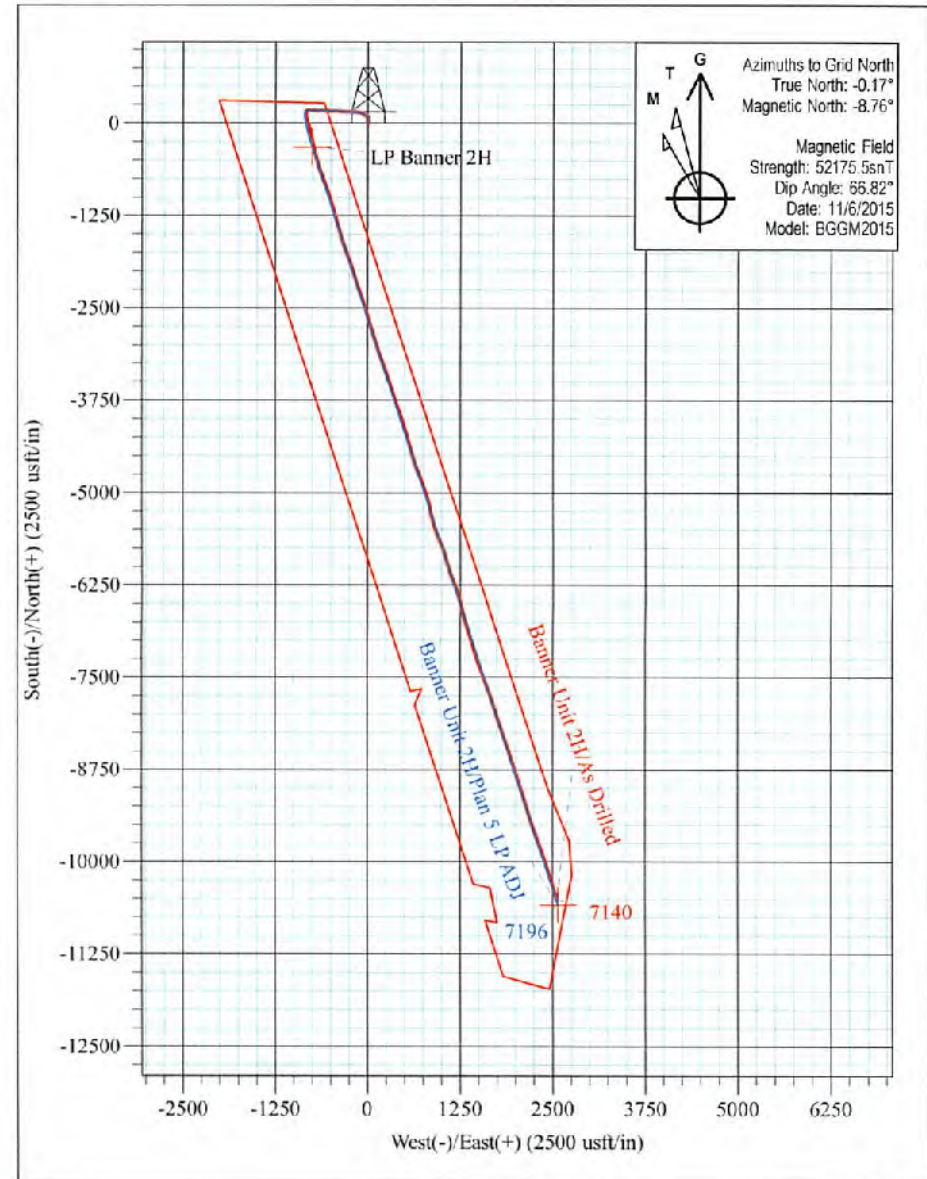
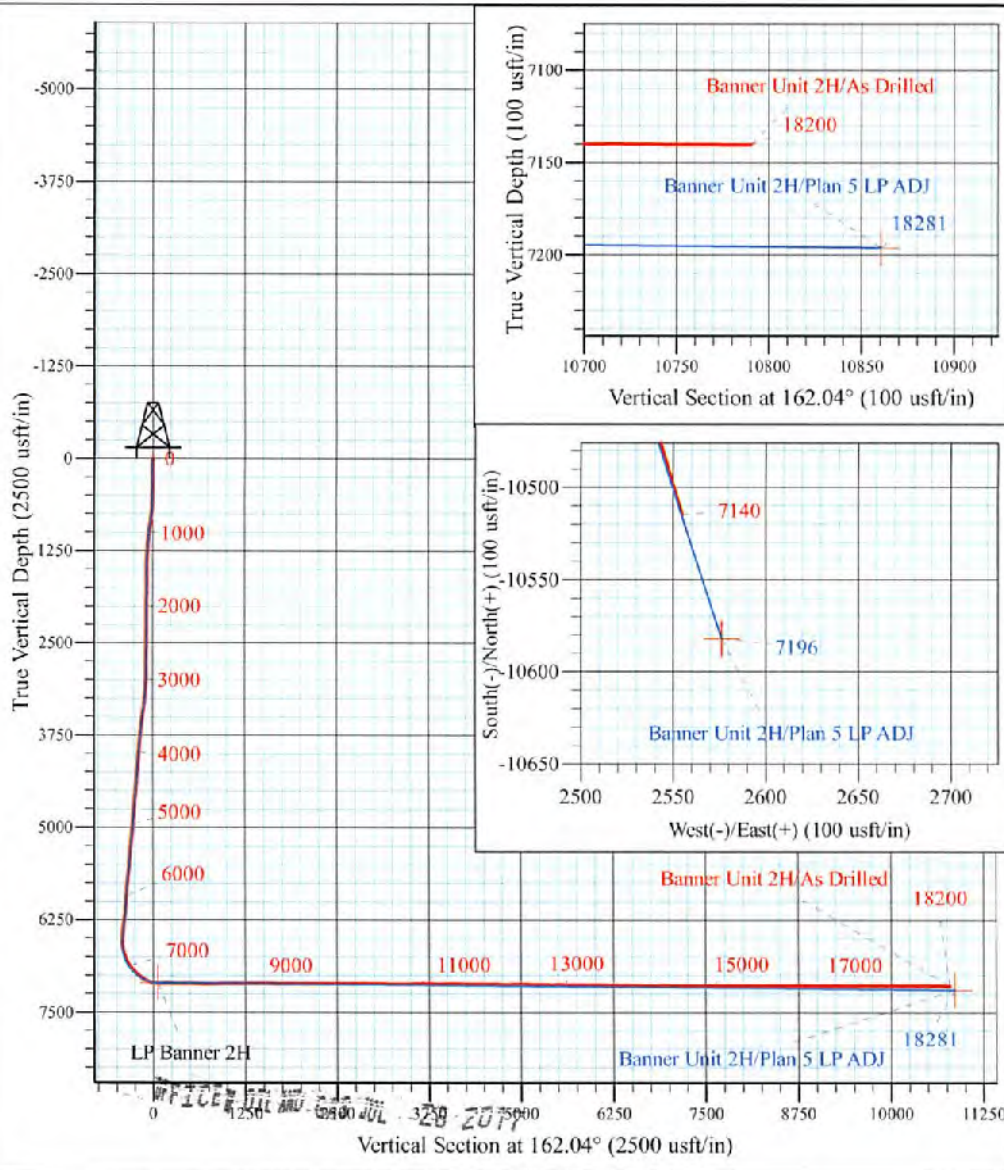
Coastal 2 Pad: Banner/Prudence/Tabor  
 Banner Unit 2H  
 Plan 5 LP ADJ  
 Precision 525: GL 1188' + KB 19' @ 1207.0usft  
 Tyler County WV

PROJECT DETAILS:  
 Geodetic System: Universal Transverse Mercator (US Survey Feet)  
 Datum: NAD 1927 (NADCON CONUS)  
 Ellipsoid: Clarke 1866  
 Zone: Zone 17N (84 W to 78 W)  
 System Datum: Mean Sea Level



WELL DETAILS: **Banner Unit 2H SHL**

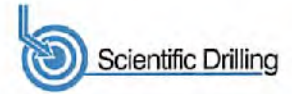
+N/-S	+E/-W	Northing	Easting	Latitude	Longitude
0.0	0.0	14318144.67	1717764.18	39° 25' 43.342 N	80° 43' 33.908 W



**Banner Unit 2H**  
**Approx. BHL**  
 39° 23' 59.299 N 80° 43' 01.758 W

Shane Rhodes  
 11:08, December 01 2015  
 Scientific Drilling International  
 124 Vista Drive  
 Charleroi, PA 15022





<b>Company:</b>	Antero Resources	<b>Local Co-ordinate Reference:</b>	Well Banner Unit 2H
<b>Project:</b>	Tyler County WV	<b>TVD Reference:</b>	Precision 525: GL 1188' + KB 19' @ 1207.0usft
<b>Site:</b>	Coastal 2 Pad: Banner/Prudence/Tabor	<b>MD Reference:</b>	Precision 525: GL 1188' + KB 19' @ 1207.0usft
<b>Well:</b>	Banner Unit 2H	<b>North Reference:</b>	Grid
<b>Wellbore:</b>	Original Wellpath	<b>Survey Calculation Method:</b>	Minimum Curvature
<b>Design:</b>	As Drilled	<b>Database:</b>	Antero NE

<b>Project</b>	Tyler County WV, Tyler Co West Virginia		
<b>Map System:</b>	Universal Transverse Mercator (US Survey Feet)	<b>System Datum:</b>	Mean Sea Level
<b>Geo Datum:</b>	NAD 1927 (NADCON CONUS)		
<b>Map Zone:</b>	Zone 17N (84 W to 78 W)		

<b>Site</b>	Coastal 2 Pad: Banner/Prudence/Tabor				
<b>Site Position:</b>		<b>Northing:</b>	14,318,150.53 usft	<b>Latitude:</b>	39° 25' 43.400 N
<b>From:</b>	Map	<b>Easting:</b>	1,717,756.08 usft	<b>Longitude:</b>	80° 43' 34.011 W
<b>Position Uncertainty:</b>	0.0 usft	<b>Slot Radius:</b>	13-3/16 "	<b>Grid Convergence:</b>	0.17 °

<b>Well</b>	Banner Unit 2H, Marcellus					
<b>Well Position</b>	<b>+N/-S</b>	0.0 usft	<b>Northing:</b>	14,318,144.67 usft	<b>Latitude:</b>	39° 25' 43.342 N
	<b>+E/-W</b>	0.0 usft	<b>Easting:</b>	1,717,764.17 usft	<b>Longitude:</b>	80° 43' 33.908 W
<b>Position Uncertainty</b>	2.0 usft		<b>Wellhead Elevation:</b>	1,207.0 usft	<b>Ground Level:</b>	1,188.0 usft

<b>Wellbore</b>	Original Wellpath				
<b>Magnetics</b>	<b>Model Name</b>	<b>Sample Date</b>	<b>Declination (°)</b>	<b>Dip Angle (°)</b>	<b>Field Strength (nT)</b>
	BGGM2015	11/6/2015	-8.59	65.82	52,176

<b>Design</b>	As Drilled				
<b>Audit Notes:</b>					
<b>Version:</b>	1.0	<b>Phase:</b>	ACTUAL	<b>Tie On Depth:</b>	0.0
<b>Vertical Section:</b>	<b>Depth From (TVD) (usft)</b>	<b>+N/-S (usft)</b>	<b>+E/-W (usft)</b>	<b>Direction (°)</b>	
	0.0	0.0	0.0	182.04	

<b>Survey Program</b>	<b>Date</b>	12/1/2015			
<b>From (usft)</b>	<b>To (usft)</b>	<b>Survey (Wellbore)</b>	<b>Tool Name</b>	<b>Description</b>	
100.4	6,250.6	Survey #6 Def FINAL Gyro (Original Wellp	Standard Keeper 104	Standard Wireline Keeper ver 1.0.4	
6,347.0	18,200.0	Survey #7 SDI MWD (Original Wellpath)	SDI MWD	Scientific Drilling Intl. MWD - Standard ver 1.0.1	

<b>Survey</b>										
<b>Measured Depth (usft)</b>	<b>Inclination (°)</b>	<b>Azimuth (°)</b>	<b>Vertical Depth (usft)</b>	<b>+N/-S (usft)</b>	<b>+E/-W (usft)</b>	<b>Vertical Section (usft)</b>	<b>Dogleg Rate (°/100usft)</b>	<b>Build Rate (°/100usft)</b>	<b>Turn Rate (°/100usft)</b>	
0.0	0.00	0.00	0.0	0.0	0.0	0.0	0.00	0.00	0.00	0.00
100.4	0.08	22.71	100.4	0.1	0.0	-0.1	0.08	0.08	0.08	0.00
123.4	0.03	53.82	123.4	0.1	0.0	-0.1	0.25	-0.22	135.26	
148.7	0.19	240.02	148.7	0.1	0.0	-0.1	0.87	0.63	-685.60	
174.2	0.07	200.22	174.2	0.0	0.0	0.0	0.56	-0.47	-156.51	
199.2	0.07	204.09	199.2	0.0	0.0	0.0	0.02	0.00	15.46	
223.0	0.11	235.29	223.0	0.0	-0.1	0.0	0.26	0.17	130.93	
248.1	0.17	246.71	248.1	-0.1	-0.1	0.0	0.26	0.24	45.50	
272.9	0.04	304.71	272.9	-0.1	-0.2	0.0	0.62	-0.52	233.97	
299.1	0.13	178.60	299.1	-0.1	-0.2	0.0	0.60	0.34	-480.79	



Scientific Drilling International  
Survey Report



<b>Company:</b>	Antero Resources	<b>Local Co-ordinate Reference:</b>	Well Banner Unit 2H
<b>Project:</b>	Tyler County WV	<b>TVD Reference:</b>	Precision 525: GL 1188' + KB 19' @ 1207.0usft
<b>Site:</b>	Coastal 2 Pad: Banner/Prudence/Tabor	<b>MD Reference:</b>	Precision 525: GL 1188' + KB 19' @ 1207.0usft
<b>Well:</b>	Banner Unit 2H	<b>North Reference:</b>	Grid
<b>Wellbore:</b>	Original Wellpath	<b>Survey Calculation Method:</b>	Minimum Curvature
<b>Design:</b>	As Drilled	<b>Database:</b>	Antero NE

Measured Depth (usft)	Inclination (°)	Azimuth (°)	Vertical Depth (usft)	+N-S (usft)	+E-W (usft)	Vertical Section (usft)	Dogleg Rate (°/100usft)	Build Rate (°/100usft)	Turn Rate (°/100usft)
323.9	0.17	212.21	323.9	-0.1	-0.2	0.1	0.38	0.16	135.58
348.7	0.20	165.63	348.7	-0.2	-0.2	0.1	0.60	0.12	-167.17
374.2	0.33	164.75	374.2	-0.3	-0.2	0.3	0.51	0.51	-4.24
399.0	0.12	151.62	399.0	-0.4	-0.1	0.4	0.87	-0.65	-53.03
423.4	0.11	144.26	423.4	-0.5	-0.1	0.4	0.07	-0.04	-30.14
448.5	0.16	145.15	448.5	-0.5	-0.1	0.5	0.28	0.28	3.54
473.5	0.07	142.22	473.5	-0.6	0.0	0.5	0.44	-0.44	-11.72
498.3	0.76	6.98	498.3	-0.4	0.0	0.4	3.35	2.66	-544.44
523.4	1.24	1.65	523.4	0.0	0.0	0.0	1.87	1.63	-21.23
549.7	1.73	2.25	549.7	0.7	0.0	-0.7	1.86	1.66	2.26
573.9	2.21	2.13	573.9	1.5	0.1	-1.4	1.99	1.99	-0.50
599.0	3.06	1.67	599.0	2.7	0.1	-2.5	3.38	3.38	-1.83
623.6	3.56	1.16	623.7	4.1	0.1	-3.9	2.02	2.02	-2.06
650.0	4.03	359.97	649.9	5.9	0.2	-5.5	1.81	1.79	-4.53
674.6	5.04	359.94	674.4	7.8	0.2	-7.4	4.11	4.11	-0.12
699.2	5.81	0.23	698.9	10.1	0.2	-9.6	3.14	3.14	1.16
724.0	6.52	0.63	723.5	12.8	0.2	-12.1	2.86	2.86	1.61
750.0	6.69	359.39	749.3	15.8	0.2	-15.0	0.86	0.66	-4.76
774.0	6.95	359.98	773.2	18.6	0.2	-17.7	1.12	1.08	2.45
799.2	7.76	358.82	798.2	21.9	0.1	-20.8	3.27	3.22	-4.61
824.5	8.34	357.16	823.2	25.4	0.0	-24.2	2.47	2.29	-6.56
849.8	8.38	356.89	848.3	29.1	-0.2	-27.7	0.22	0.16	-1.07
874.9	8.50	356.91	873.1	32.8	-0.4	-31.3	0.48	0.48	0.08
898.3	8.63	356.92	896.2	36.2	-0.6	-34.6	0.56	0.56	0.04
923.5	8.68	357.09	921.1	40.0	-0.8	-38.3	0.22	0.20	0.68
948.8	8.67	356.35	946.1	43.8	-1.0	-42.0	0.44	-0.04	-2.92
975.0	7.85	357.34	972.1	47.6	-1.2	-45.6	3.18	-3.13	3.78
999.6	7.62	358.41	996.4	50.9	-1.3	-48.8	1.10	-0.94	4.36
1,024.8	7.37	358.01	1,021.4	54.2	-1.4	-52.0	1.01	-0.99	-1.59
1,048.6	6.73	359.91	1,045.1	57.1	-1.5	-54.8	2.86	-2.69	7.98
1,073.4	6.19	0.33	1,069.6	59.9	-1.5	-57.4	2.19	-2.18	1.70
1,099.2	6.05	0.37	1,095.3	62.6	-1.5	-60.0	0.54	-0.54	0.16
1,124.9	5.28	1.23	1,120.9	65.2	-1.4	-62.4	3.01	-2.99	3.34
1,149.4	5.01	1.17	1,145.3	67.4	-1.4	-64.5	1.10	-1.10	-0.24
1,174.2	4.56	1.58	1,170.0	69.4	-1.3	-66.5	1.82	-1.81	1.65
1,199.5	4.36	2.30	1,195.2	71.4	-1.3	-68.3	0.82	-0.79	2.85
1,224.7	3.84	3.34	1,220.4	73.2	-1.2	-70.0	2.08	-2.06	4.12
1,249.8	3.61	3.42	1,245.4	74.8	-1.1	-71.5	0.92	-0.92	0.32
1,274.9	3.24	3.76	1,270.5	76.3	-1.0	-72.9	1.47	-1.47	1.35
1,299.9	2.96	3.52	1,295.5	77.7	-0.9	-74.2	1.12	-1.12	-0.96
1,325.0	2.65	2.12	1,320.6	78.9	-0.8	-75.3	1.26	-1.23	-5.57
1,349.9	2.31	3.35	1,345.4	80.0	-0.8	-76.3	1.38	-1.37	4.94
1,373.6	2.17	4.41	1,369.1	80.9	-0.7	-77.2	0.62	-0.59	4.49





Scientific Drilling International  
Survey Report



<b>Company:</b>	Antero Resources	<b>Local Co-ordinate Reference:</b>	Well Banner Unit 2H
<b>Project:</b>	Tyler County WV	<b>TVD Reference:</b>	Precision 525: GL 1188' + KB 19' @ 1207.0usft
<b>Site:</b>	Coastal 2 Pad: Banner/Prudence/Tabor	<b>MD Reference:</b>	Precision 525: GL 1188' + KB 19' @ 1207.0usft
<b>Well:</b>	Banner Unit 2H	<b>North Reference:</b>	Grid
<b>Wellbore:</b>	Original Wellpath	<b>Survey Calculation Method:</b>	Minimum Curvature
<b>Design:</b>	As Drilled	<b>Database:</b>	Antero NE

Measured Depth (usft)	Inclination (°)	Azimuth (°)	Vertical Depth (usft)	+N/-S (usft)	+E/-W (usft)	Vertical Section (usft)	Dogleg Rate (°/100usft)	Build Rate (°/100usft)	Turn Rate (°/100usft)
1,398.7	1.79	3.50	1,394.1	81.8	-0.7	-78.0	1.52	-1.51	-3.63
1,424.0	1.64	2.57	1,419.4	82.5	-0.6	-78.7	0.60	-0.59	-3.68
1,449.1	1.48	1.53	1,444.5	83.2	-0.6	-79.3	0.65	-0.64	-4.15
1,474.3	1.42	1.84	1,469.7	83.9	-0.6	-79.9	0.24	-0.24	1.23
1,499.4	1.14	2.31	1,494.8	84.4	-0.6	-80.5	1.12	-1.12	1.87
1,524.6	1.04	2.01	1,520.0	84.9	-0.5	-80.9	0.40	-0.40	-1.19
1,550.0	0.91	359.60	1,545.4	85.3	-0.5	-81.3	0.54	-0.51	-9.50
1,574.5	0.73	3.90	1,569.9	85.7	-0.5	-81.7	0.77	-0.73	17.53
1,598.6	0.67	359.46	1,594.0	86.0	-0.5	-81.9	0.34	-0.25	-18.42
1,623.0	0.58	352.38	1,618.4	86.2	-0.5	-82.2	0.49	-0.37	-29.00
1,649.5	0.47	342.86	1,644.9	86.5	-0.6	-82.4	0.53	-0.42	-35.92
1,674.0	0.46	349.31	1,669.4	86.7	-0.6	-82.6	0.22	-0.04	26.36
1,699.7	0.43	339.35	1,695.1	86.9	-0.7	-82.8	0.32	-0.12	-38.75
1,723.4	0.33	332.81	1,718.8	87.0	-0.7	-83.0	0.46	-0.42	-27.62
1,750.1	0.30	327.87	1,745.5	87.1	-0.8	-83.1	0.15	-0.11	-18.51
1,774.5	0.32	324.60	1,769.9	87.2	-0.9	-83.3	0.11	0.08	-13.40
1,799.1	0.38	336.71	1,794.5	87.4	-1.0	-83.4	0.38	0.24	49.11
1,824.8	0.28	329.19	1,820.2	87.5	-1.0	-83.6	0.42	-0.39	-29.33
1,848.2	0.29	335.04	1,843.6	87.6	-1.1	-83.7	0.13	0.04	24.95
1,874.9	0.19	347.61	1,870.3	87.7	-1.1	-83.8	0.42	-0.38	47.15
1,899.5	0.18	325.25	1,894.9	87.8	-1.2	-83.9	0.29	-0.04	-90.93
1,925.0	0.20	326.02	1,920.5	87.8	-1.2	-83.9	0.08	0.08	3.01
1,948.4	0.17	347.04	1,943.9	87.9	-1.2	-84.0	0.31	-0.13	89.87
1,973.9	0.30	311.65	1,969.3	88.0	-1.3	-84.1	0.74	0.51	-138.95
1,999.1	0.39	354.65	1,994.5	88.1	-1.3	-84.2	1.06	0.36	170.50
2,022.9	0.25	313.95	2,018.4	88.2	-1.4	-84.4	1.08	-0.59	-170.86
2,049.0	0.28	336.79	2,044.4	88.3	-1.5	-84.5	0.42	0.12	87.81
2,074.9	0.32	295.03	2,070.4	88.4	-1.6	-84.6	0.64	0.15	-160.68
2,098.9	0.39	324.18	2,094.4	88.5	-1.7	-84.7	0.60	0.29	121.51
2,124.8	0.31	318.85	2,120.2	88.6	-1.8	-84.9	0.33	-0.31	-20.60
2,148.6	0.38	315.76	2,144.0	88.8	-1.9	-85.0	0.30	0.29	-12.99
2,174.5	0.37	324.24	2,169.9	88.9	-2.0	-85.2	0.22	-0.04	32.75
2,198.4	0.26	313.94	2,193.8	89.0	-2.0	-85.3	0.52	-0.46	-43.11
2,224.2	0.30	337.40	2,219.7	89.1	-2.1	-85.4	0.47	0.15	90.72
2,250.1	0.26	324.27	2,245.5	89.2	-2.2	-85.5	0.27	-0.08	-50.83
2,275.0	0.20	302.72	2,270.4	89.3	-2.3	-85.6	0.48	-0.32	-86.55
2,299.7	0.23	326.25	2,295.1	89.3	-2.3	-85.7	0.37	0.12	95.30
2,323.6	0.16	336.58	2,319.0	89.4	-2.4	-85.8	0.33	-0.29	43.22
2,349.4	0.09	325.72	2,344.8	89.5	-2.4	-85.8	0.28	-0.27	-41.98
2,373.3	0.06	261.52	2,368.7	89.5	-2.4	-85.9	0.35	-0.13	-268.73
2,399.0	0.15	322.61	2,394.4	89.5	-2.4	-85.9	0.51	0.35	237.80
2,423.8	0.08	338.94	2,419.2	89.5	-2.5	-85.9	0.31	-0.28	65.79
2,448.9	0.25	322.44	2,444.3	89.6	-2.5	-86.0	0.70	0.68	-65.82



Scientific Drilling International  
Survey Report



<b>Company:</b>	Antero Resources	<b>Local Co-ordinate Reference:</b>	Well Banner Unit 2H
<b>Project:</b>	Tyler County WV	<b>TVD Reference:</b>	Precision 525: GL 1188' + KB 19' @ 1207.0usft
<b>Site:</b>	Coastal 2 Pad: Banner/Prudence/Tabor	<b>MD Reference:</b>	Precision 525: GL 1188' + KB 19' @ 1207.0usft
<b>Well:</b>	Banner Unit 2H	<b>North Reference:</b>	Grid
<b>Wellbore:</b>	Original Wellpath	<b>Survey Calculation Method:</b>	Minimum Curvature
<b>Design:</b>	As Drilled	<b>Database:</b>	Antero NE

Survey

Measured Depth (usft)	Inclination (°)	Azimuth (°)	Vertical Depth (usft)	+N/-S (usft)	+E/-W (usft)	Vertical Section (usft)	Dogleg Rate (°/100usft)	Build Rate (°/100usft)	Turn Rate (°/100usft)
2,474.0	0.29	338.80	2,469.5	89.7	-2.6	-86.1	0.34	0.16	65.08
2,493.4	0.24	330.88	2,488.8	89.8	-2.6	-86.2	0.32	-0.28	-40.89
2,523.5	0.16	302.91	2,518.9	89.9	-2.7	-86.3	0.41	-0.27	-92.92
2,547.9	0.15	319.87	2,543.3	89.9	-2.7	-86.4	0.19	-0.04	69.51
2,574.8	0.17	300.89	2,570.2	90.0	-2.8	-86.4	0.21	0.07	-70.51
2,599.2	0.12	300.89	2,594.6	90.0	-2.8	-86.5	0.20	-0.20	-0.82
2,624.2	0.14	308.82	2,619.6	90.0	-2.9	-86.5	0.11	0.08	32.61
2,648.6	0.24	295.66	2,644.0	90.1	-2.9	-86.6	0.44	0.41	-53.89
2,673.1	0.26	304.50	2,668.5	90.1	-3.0	-86.7	0.18	0.08	36.13
2,699.9	0.21	306.18	2,695.3	90.2	-3.1	-86.7	0.19	-0.19	6.26
2,724.3	0.26	307.47	2,719.7	90.2	-3.2	-86.8	0.21	0.21	5.29
2,749.6	0.29	306.46	2,745.0	90.3	-3.3	-86.9	0.12	0.12	-3.99
2,773.9	0.33	315.30	2,769.3	90.4	-3.4	-87.0	0.26	0.16	36.30
2,798.4	0.40	324.12	2,793.8	90.5	-3.5	-87.2	0.37	0.29	36.06
2,823.2	0.44	324.32	2,818.6	90.7	-3.6	-87.4	0.16	0.16	0.81
2,847.7	0.56	315.21	2,843.1	90.8	-3.7	-87.5	0.59	0.49	-37.29
2,874.4	0.69	314.35	2,869.8	91.0	-3.9	-87.8	0.49	0.49	-3.22
2,899.4	0.73	313.78	2,893.8	91.2	-4.2	-88.1	0.17	0.17	-2.38
2,924.7	0.83	298.32	2,920.1	91.4	-4.4	-88.4	0.86	0.38	-58.78
2,949.6	1.04	291.28	2,944.0	91.6	-4.8	-88.6	1.00	0.88	-29.44
2,974.5	3.10	294.47	2,969.9	92.0	-5.7	-89.2	7.96	7.95	12.32
2,999.9	3.62	293.61	2,994.2	92.6	-7.0	-90.2	2.14	2.13	-3.53
3,023.1	3.91	292.49	3,018.4	93.2	-8.4	-91.2	1.23	1.20	-4.62
3,049.4	5.09	291.51	3,044.6	93.9	-10.3	-92.6	4.50	4.49	-3.73
3,073.3	5.88	292.78	3,068.4	94.8	-12.5	-94.0	3.34	3.30	5.30
3,099.7	6.16	293.33	3,094.6	95.9	-15.0	-95.9	1.08	1.06	2.09
3,124.2	6.35	293.03	3,119.0	96.9	-17.5	-97.6	0.79	0.77	-1.22
3,148.5	7.19	294.93	3,143.1	98.1	-20.1	-99.5	3.59	3.47	7.84
3,174.5	7.32	295.28	3,168.9	99.5	-23.0	-101.8	0.53	0.50	1.35
3,198.4	7.51	295.01	3,192.7	100.8	-25.8	-103.9	0.81	0.79	-1.13
3,224.8	8.11	295.22	3,218.8	102.3	-29.1	-108.3	2.28	2.27	0.80
3,249.7	8.84	298.01	3,243.4	103.9	-32.4	-108.9	2.97	2.94	3.18
3,273.6	8.96	294.92	3,267.0	105.5	-35.7	-111.4	0.87	0.50	-4.57
3,297.8	9.02	295.30	3,290.9	107.1	-39.2	-114.0	0.35	0.25	1.57
3,324.5	9.45	302.71	3,317.2	109.2	-42.9	-117.1	4.74	1.61	27.62
3,348.4	9.51	304.06	3,340.8	111.4	-46.2	-120.2	0.96	0.25	5.65
3,373.1	9.71	304.22	3,365.2	113.7	-49.6	-123.4	0.82	0.81	0.65
3,398.9	9.63	306.78	3,390.6	116.2	-53.1	-126.9	1.69	-0.31	9.91
3,423.3	9.51	310.99	3,414.7	118.7	-56.3	-130.3	2.91	-0.49	17.25
3,449.1	9.43	310.26	3,440.2	121.5	-59.5	-133.9	0.56	-0.31	-2.83
3,473.5	9.28	309.42	3,464.3	124.0	-62.6	-137.3	0.83	-0.61	-3.44
3,499.7	10.16	305.65	3,490.1	126.7	-66.1	-140.9	4.21	3.44	-14.41
3,524.1	10.56	303.44	3,514.0	129.2	-69.7	-144.4	2.26	1.56	-9.07
3,548.3	10.31	301.02	3,537.9	131.6	-73.4	-147.8	2.08	-1.03	-9.98





Scientific Drilling International  
Survey Report



<b>Company:</b>	Antero Resources	<b>Local Co-ordinate Reference:</b>	Well Banner Unit 2H
<b>Project:</b>	Tyler County WV	<b>TVD Reference:</b>	Precision 525: GL 1186' + KB 19' @ 1207.0usft
<b>Site:</b>	Coastal 2 Pad: Banner/Prudence/Tabor	<b>MD Reference:</b>	Precision 525: GL 1186' + KB 19' @ 1207.0usft
<b>Well:</b>	Banner Unit 2H	<b>North Reference:</b>	Grid
<b>Wellbore:</b>	Original Wellpath	<b>Survey Calculation Method:</b>	Minimum Curvature
<b>Design:</b>	As Drilled	<b>Database:</b>	Antero NE

Survey										
Measured Depth (usft)	Inclination (°)	Azimuth (°)	Vertical Depth (usft)	+N/-S (usft)	+E/-W (usft)	Vertical Section (usft)	Dogleg Rate (°/100usft)	Build Rate (°/100usft)	Turn Rate (°/100usft)	
3,574.7	10.37	299.88	3,563.8	134.0	-77.5	-151.3	0.81	0.23	-4.32	
3,598.6	10.52	294.73	3,587.3	136.0	-81.3	-154.4	3.95	0.63	-21.50	
3,624.6	10.53	293.45	3,612.9	137.9	-85.6	-157.6	0.90	0.04	-4.93	
3,648.8	10.32	291.98	3,636.7	139.6	-89.7	-160.4	1.40	-0.87	-6.06	
3,674.8	10.54	289.19	3,662.3	141.2	-94.1	-163.4	2.12	0.85	-10.72	
3,698.8	10.83	286.06	3,685.8	142.6	-98.3	-166.0	2.70	1.21	-13.05	
3,724.3	10.71	283.28	3,710.9	143.8	-102.9	-168.5	2.09	-0.47	-10.90	
3,749.7	10.70	282.17	3,735.9	144.8	-107.5	-170.9	0.81	-0.04	-4.37	
3,773.7	11.07	278.40	3,759.4	145.6	-112.0	-173.1	3.35	1.55	-15.75	
3,799.1	10.77	277.07	3,784.3	146.3	-116.8	-175.2	1.54	-1.18	-5.23	
3,824.9	11.09	277.71	3,809.6	146.9	-121.6	-177.2	1.33	1.24	2.48	
3,848.3	11.36	277.25	3,832.7	147.5	-126.1	-179.2	1.21	1.15	-1.96	
3,873.7	11.62	275.89	3,857.6	148.1	-131.2	-181.3	1.48	1.02	-5.35	
3,899.4	11.62	275.38	3,882.8	148.6	-136.3	-183.4	0.40	0.00	-1.98	
3,924.9	11.63	274.82	3,907.7	149.0	-141.4	-185.4	0.45	0.04	-2.20	
3,948.7	12.13	274.43	3,931.0	149.4	-146.3	-187.3	2.13	2.10	-1.64	
3,974.5	12.48	274.21	3,956.1	149.9	-151.8	-189.4	1.37	1.36	-0.85	
3,998.2	12.35	273.25	3,979.3	150.2	-156.9	-191.2	1.03	-0.55	-4.05	
4,023.7	12.44	272.89	4,004.2	150.5	-162.3	-193.2	0.46	0.35	-1.41	
4,049.7	12.97	272.34	4,029.6	150.7	-168.1	-195.2	2.09	2.04	-2.12	
4,073.3	13.03	271.78	4,052.6	150.9	-173.4	-197.0	0.59	0.25	-2.37	
4,098.6	13.14	272.12	4,077.2	151.1	-179.1	-199.0	0.53	0.43	1.34	
4,124.6	13.40	272.88	4,102.6	151.4	-185.1	-201.1	1.25	1.00	3.31	
4,148.2	13.68	274.03	4,125.5	151.7	-190.6	-203.1	1.58	1.19	4.46	
4,174.0	13.50	273.11	4,150.6	152.1	-196.6	-205.3	1.09	-0.70	-3.56	
4,199.4	13.54	273.63	4,175.3	152.5	-202.6	-207.5	0.50	0.16	2.05	
4,223.3	13.21	275.36	4,198.5	152.9	-208.1	-209.6	2.17	-1.38	7.24	
4,248.6	13.34	275.52	4,223.1	153.4	-213.8	-211.9	0.53	0.51	0.63	
4,273.7	12.67	276.43	4,247.6	154.0	-219.5	-214.2	2.79	-2.67	3.63	
4,298.5	12.76	277.13	4,271.7	154.7	-224.9	-216.5	0.72	0.38	2.83	
4,323.4	12.79	276.85	4,296.1	155.3	-230.3	-218.8	0.28	0.12	-1.12	
4,350.0	12.29	275.67	4,322.0	156.0	-236.1	-221.2	2.11	-1.88	-4.44	
4,374.8	11.89	274.60	4,346.3	156.4	-241.3	-223.2	1.85	-1.61	-4.31	
4,399.3	12.27	273.53	4,370.2	156.8	-246.4	-225.1	1.80	1.55	-4.38	
4,423.7	12.55	272.73	4,394.1	157.1	-251.6	-227.0	1.35	1.15	-3.28	
4,448.4	12.27	270.82	4,418.2	157.2	-256.9	-228.8	2.01	-1.13	-7.72	
4,474.6	12.45	271.15	4,443.8	157.3	-262.5	-230.6	0.74	0.69	1.26	
4,499.8	13.07	271.93	4,468.3	157.5	-268.1	-232.5	2.56	2.47	3.10	
4,524.5	13.19	272.29	4,492.5	157.7	-273.7	-234.4	0.59	0.48	1.45	
4,548.4	13.06	271.96	4,515.7	157.9	-279.1	-236.3	0.62	-0.54	-1.30	
4,574.5	13.22	274.17	4,541.2	158.2	-285.0	-238.4	2.00	0.61	8.39	
4,598.3	13.51	276.13	4,564.3	158.7	-290.5	-240.6	2.26	1.22	8.24	
4,624.5	12.86	275.51	4,589.8	159.3	-296.5	-243.0	2.54	-2.48	-2.37	



Scientific Drilling International  
Survey Report



<b>Company:</b>	Antero Resources	<b>Local Co-ordinate Reference:</b>	Well Banner Unit 2H
<b>Project:</b>	Tyler County WV	<b>TVD Reference:</b>	Precision 525: GL 1188' + KB 19' @ 1207.0usft
<b>Site:</b>	Coastal 2 Pad: Banner/Prudence/Tabor	<b>MD Reference:</b>	Precision 525: GL 1188' + KB 19' @ 1207.0usft
<b>Well:</b>	Banner Unit 2H	<b>North Reference:</b>	Grid
<b>Wellbore:</b>	Original Wellpath	<b>Survey Calculation Method:</b>	Minimum Curvature
<b>Design:</b>	As Drilled	<b>Database:</b>	Antero NE

Survey										
Measured Depth (usft)	Inclination (°)	Azimuth (°)	Vertical Depth (usft)	+N/-S (usft)	+E/-W (usft)	Vertical Section (usft)	Dogleg Rate (°/100usft)	Build Rate (°/100usft)	Turn Rate (°/100usft)	
4,648.4	13.07	276.58	4,613.1	159.9	-301.8	-245.2	1.33	0.88	4.48	
4,674.5	13.27	275.55	4,638.5	160.5	-307.7	-247.6	1.18	0.77	-3.94	
4,698.8	13.36	274.97	4,662.1	161.0	-313.3	-249.8	0.66	0.37	-2.39	
4,723.5	12.85	272.86	4,686.2	161.4	-318.9	-251.9	2.83	-2.06	-8.54	
4,749.8	13.20	272.96	4,711.8	161.7	-324.8	-254.0	1.33	1.33	0.38	
4,773.6	13.69	273.07	4,734.9	162.0	-330.3	-256.0	2.07	2.07	0.46	
4,799.7	13.44	272.77	4,760.3	162.3	-336.4	-258.1	0.89	-0.96	-1.15	
4,823.7	13.49	271.96	4,783.7	162.5	-342.0	-260.1	0.81	0.21	-3.37	
4,849.8	13.65	271.70	4,809.1	162.7	-348.1	-262.2	0.66	0.61	-1.00	
4,873.7	13.89	271.84	4,832.2	162.9	-353.8	-264.1	1.02	1.01	0.59	
4,899.7	13.46	271.17	4,857.5	163.1	-360.0	-266.1	1.76	-1.65	-2.58	
4,923.8	13.76	270.55	4,880.9	163.2	-365.6	-268.0	1.38	1.24	-2.57	
4,949.9	15.01	271.46	4,906.2	163.3	-372.1	-270.1	4.87	4.79	3.49	
4,973.8	15.18	271.40	4,929.2	163.4	-378.3	-272.1	0.72	0.71	-0.25	
4,999.9	14.71	271.18	4,954.5	163.6	-385.1	-274.4	1.81	-1.80	-0.84	
5,024.4	14.49	273.38	4,978.2	163.8	-391.2	-276.5	2.43	-0.90	8.97	
5,048.5	14.31	275.95	5,001.6	164.3	-397.2	-278.8	2.75	-0.75	10.66	
5,074.2	13.91	275.22	5,026.5	164.9	-403.4	-281.3	1.70	-1.56	-2.84	
5,098.5	13.64	274.45	5,050.1	165.4	-409.2	-283.5	1.34	-1.11	-3.17	
5,125.0	14.34	273.68	5,075.8	165.9	-415.6	-285.9	2.74	2.65	-2.91	
5,149.2	14.60	273.10	5,099.3	166.2	-421.6	-288.1	1.23	1.07	-2.39	
5,173.4	14.25	272.73	5,122.7	166.5	-427.7	-290.3	1.50	-1.45	-1.53	
5,199.4	14.62	272.79	5,147.0	166.8	-434.1	-292.6	1.43	1.42	0.23	
5,223.6	15.05	273.04	5,171.2	167.2	-440.3	-294.8	1.80	1.78	1.03	
5,249.2	14.69	272.27	5,196.0	167.5	-446.9	-297.1	1.60	-1.41	-3.01	
5,273.4	14.20	271.44	5,219.4	167.7	-452.9	-299.2	2.19	-2.02	-3.42	
5,299.6	13.71	269.80	5,244.8	167.7	-459.2	-301.2	2.41	-1.87	-8.27	
5,325.0	13.74	269.46	5,269.5	167.7	-465.2	-303.0	0.34	0.12	-1.34	
5,348.8	13.52	268.57	5,292.6	167.6	-470.9	-304.6	1.28	-0.92	-3.74	
5,374.1	14.16	269.53	5,317.2	167.5	-476.9	-306.4	2.69	2.53	3.79	
5,399.6	15.80	271.92	5,341.8	167.6	-483.5	-308.5	6.88	6.44	9.39	
5,425.0	16.11	272.44	5,366.3	167.9	-490.5	-310.9	1.34	1.22	2.04	
5,448.7	16.21	272.90	5,389.0	168.2	-497.1	-313.2	0.69	0.42	1.94	
5,474.4	16.08	273.86	5,413.7	168.6	-504.2	-315.8	1.16	-0.51	3.74	
5,499.9	16.07	274.73	5,438.3	169.1	-511.3	-318.5	0.94	-0.04	3.40	
5,523.4	15.74	273.57	5,460.8	169.6	-517.7	-320.9	1.96	-1.41	-4.95	
5,546.7	15.81	273.47	5,485.2	170.0	-524.5	-323.5	0.30	0.28	-0.39	
5,573.7	15.54	272.42	5,509.3	170.4	-531.3	-325.9	1.57	-1.08	-4.20	
5,599.0	15.35	272.73	5,533.6	170.7	-538.0	-328.2	0.82	-0.75	1.23	
5,624.4	15.50	271.65	5,558.1	170.9	-544.7	-330.6	1.28	0.59	-4.25	
5,648.1	15.39	273.94	5,580.9	171.2	-551.1	-332.8	2.61	-0.46	9.65	
5,673.7	15.73	276.07	5,605.7	171.8	-557.9	-335.5	2.59	1.33	8.30	
5,699.2	15.64	276.06	5,630.1	172.5	-564.7	-338.3	0.35	-0.35	-0.04	





Scientific Drilling International  
Survey Report



<b>Company:</b>	Antero Resources	<b>Local Co-ordinate Reference:</b>	Well Banner Unit 2H
<b>Project:</b>	Tyler County WV	<b>TVD Reference:</b>	Precision 525: GL 1188' + KB 19' @ 1207.0usft
<b>Site:</b>	Coastal 2 Pad: Banner/Prudence/Tabor	<b>MD Reference:</b>	Precision 525: GL 1188' + KB 19' @ 1207.0usft
<b>Well:</b>	Banner Unit 2H	<b>North Reference:</b>	Grid
<b>Wellbore:</b>	Original Wellpath	<b>Survey Calculation Method:</b>	Minimum Curvature
<b>Design:</b>	As Drilled	<b>Database:</b>	Antero NE

Measured Depth (usft)	Inclination (°)	Azimuth (°)	Vertical Depth (usft)	+N-S (usft)	+E-W (usft)	Vertical Section (usft)	Dogleg Rate (°/100usft)	Build Rate (°/100usft)	Turn Rate (°/100usft)	
5,724.7	15.73	275.57	5,654.7	173.2	-571.6	-341.1	0.63	0.35	-1.92	
5,750.0	15.35	274.48	5,679.1	173.8	-578.4	-343.7	1.90	-1.51	-4.32	
5,773.5	15.38	274.05	5,701.7	174.3	-584.6	-346.1	0.47	0.04	-1.79	
5,798.8	15.00	272.68	5,726.2	174.7	-591.2	-348.5	2.01	-1.42	-5.45	
5,823.8	15.05	272.83	5,750.4	175.0	-597.7	-350.8	0.25	0.20	0.60	
5,849.2	14.65	271.51	5,774.8	175.3	-604.2	-353.0	2.07	-1.58	-5.21	
5,874.8	14.68	270.39	5,799.6	175.4	-610.6	-355.1	1.11	0.12	-4.37	
5,898.5	14.57	269.19	5,822.6	175.3	-616.6	-356.9	1.36	-0.45	-5.06	
5,923.5	14.48	271.29	5,846.7	175.4	-622.9	-358.9	2.14	-0.35	8.41	
5,948.8	14.40	272.78	5,871.3	175.6	-629.2	-361.0	1.50	-0.32	5.89	
5,974.3	14.56	272.07	5,896.0	175.9	-635.6	-363.3	0.94	0.63	-2.78	
5,998.6	14.88	270.64	5,919.4	176.0	-641.7	-365.3	2.00	1.32	-5.90	
6,024.4	15.02	269.30	5,944.4	176.0	-648.4	-367.4	1.44	0.54	-5.18	
6,048.7	15.51	266.49	5,967.8	175.8	-654.8	-369.1	3.86	2.02	-11.60	
6,074.1	15.55	265.02	5,992.3	175.3	-661.6	-370.7	1.56	0.16	-5.79	
6,099.0	15.43	265.55	6,016.3	174.7	-668.2	-372.2	0.74	-0.48	2.12	
6,124.8	14.99	268.35	6,041.2	174.4	-675.0	-374.0	3.32	-1.71	10.86	
6,149.8	15.07	267.84	6,065.4	174.1	-681.4	-375.8	0.82	0.32	-2.04	
6,174.7	15.40	267.04	6,089.3	173.8	-688.0	-377.5	1.57	1.33	-3.22	
6,199.7	15.01	269.95	6,113.5	173.7	-694.5	-379.4	3.43	-1.56	11.64	
6,224.2	14.83	273.89	6,137.2	173.9	-700.8	-381.5	3.99	-0.73	15.25	
6,250.0	15.31	273.53	6,162.1	174.3	-707.5	-384.0	1.86	1.88	-0.61	
<b>Last SDI Gyro @ 6250 MD</b>										
6,250.6	15.32	273.53	6,162.7	174.3	-707.7	-384.0	1.86	1.86	-0.59	
6,347.0	15.61	280.60	6,255.6	177.5	-733.1	-394.9	1.96	0.30	7.33	
<b>First SDI MWD @ 6347</b>										
6,437.0	14.33	277.59	6,342.5	181.2	-756.1	-405.5	1.66	-1.42	-3.34	
6,526.0	12.83	268.65	6,429.0	182.4	-776.9	-413.1	2.89	-1.69	-10.04	
6,571.0	13.44	266.65	6,472.9	182.0	-787.1	-415.8	1.69	1.36	-4.44	
6,616.0	13.70	265.33	6,516.6	181.2	-797.6	-418.3	0.90	0.58	-2.93	
6,661.0	13.42	258.32	6,560.4	179.7	-808.1	-420.1	3.70	-0.82	-15.58	
6,705.0	15.22	235.39	6,603.0	175.4	-817.8	-419.0	13.42	4.09	-52.11	
6,750.0	17.80	213.26	6,646.2	186.3	-826.5	-413.0	14.99	5.73	-49.18	
6,784.0	18.91	201.08	6,678.5	156.8	-831.3	-405.5	11.72	3.25	-35.82	
<b>SCMR @ 6784</b>										
6,795.0	19.42	197.48	6,688.9	153.4	-832.5	-402.6	11.72	4.68	-32.73	
6,840.0	21.45	188.87	6,731.0	138.1	-836.0	-389.2	8.05	4.51	-19.13	
6,885.0	24.28	184.43	6,772.5	120.8	-838.0	-373.3	7.38	8.29	-9.87	
6,929.0	27.35	177.81	6,812.0	101.5	-838.3	-365.0	10.45	8.11	-15.05	
6,963.0	31.09	172.72	6,841.6	84.8	-836.9	-338.7	12.03	9.52	-14.98	
<b>MDLX @ 6963</b>										
6,974.0	32.17	171.27	6,851.0	79.1	-836.1	-333.1	12.03	9.86	-13.14	
7,019.0	36.41	165.88	6,888.2	54.3	-831.0	-307.9	11.58	9.42	-11.98	
7,064.0	40.17	163.99	6,923.5	27.4	-823.7	-280.1	8.75	8.36	-4.20	





Scientific Drilling International  
Survey Report



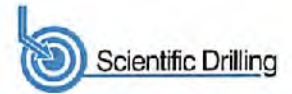
<b>Company:</b>	Antero Resources	<b>Local Co-ordinate Reference:</b>	Well Banner Unit 2H
<b>Project:</b>	Tyler County WV	<b>TVD Reference:</b>	Precision 525: GL 1188' + KB 19' @ 1207.0usft
<b>Site:</b>	Coastal 2 Pad: Banner/Prudence/Tabor	<b>MD Reference:</b>	Precision 525: GL 1188' + KB 19' @ 1207.0usft
<b>Well:</b>	Banner Unit 2H	<b>North Reference:</b>	Grid
<b>Wellbore:</b>	Original Wellpath	<b>Survey Calculation Method:</b>	Minimum Curvature
<b>Design:</b>	As Drilled	<b>Database:</b>	Antero NE

Survey										
Measured Depth (usft)	Inclination (°)	Azimuth (°)	Vertical Depth (usft)	+N/-S (usft)	+E/-W (usft)	Vertical Section (usft)	Dogleg Rate (°/100usft)	Build Rate (°/100usft)	Turn Rate (°/100usft)	
7,109.0	44.04	162.42	6,956.9	-1.5	-815.0	-249.9	8.91	8.60	-3.49	
7,134.0	46.38	161.93	6,974.5	-18.4	-809.6	-232.2	9.46	9.35	-1.97	
<b>BRKT @ 7134</b>										
7,154.0	48.25	161.56	6,988.1	-32.3	-805.0	-217.5	9.46	9.36	-1.84	
7,176.0	50.11	161.80	7,002.4	-48.1	-799.7	-200.8	8.50	8.47	1.07	
<b>TLLY @ 7176</b>										
7,199.0	52.06	162.03	7,016.9	-65.1	-794.2	-182.9	8.50	8.47	1.02	
7,243.0	58.00	164.24	7,042.1	-99.6	-793.7	-146.9	14.11	13.50	5.02	
7,288.0	63.82	167.53	7,064.0	-137.8	-774.2	-107.7	14.42	12.93	7.31	
7,291.0	64.18	167.57	7,065.3	-140.4	-773.6	-105.0	12.02	11.98	1.20	
<b>MRCL_HOT @ 7291</b>										
7,333.0	69.21	168.05	7,081.9	-178.1	-765.5	-86.6	12.02	11.98	1.15	
7,378.0	76.42	167.57	7,095.2	-220.1	-756.4	-23.9	16.05	16.02	-1.07	
7,403.0	79.40	167.23	7,100.4	-243.9	-751.1	0.5	11.99	11.92	-1.36	
7,448.0	86.65	167.39	7,105.9	-287.5	-741.3	44.9	16.11	16.11	0.36	
7,538.0	89.34	165.98	7,109.0	-375.0	-720.5	134.5	3.37	2.99	-1.57	
7,627.0	88.80	165.49	7,110.5	-461.2	-698.6	223.3	0.82	-0.61	-0.55	
7,717.0	88.27	162.86	7,112.8	-547.8	-674.1	313.2	2.98	-0.59	-2.92	
7,807.0	91.52	162.40	7,112.9	-633.7	-647.2	403.2	3.55	3.61	-0.51	
7,896.0	89.60	160.64	7,112.1	-718.1	-619.0	492.2	2.93	-2.16	-1.98	
7,986.0	88.33	158.40	7,113.7	-802.4	-587.5	582.1	2.86	-1.41	-2.49	
8,076.0	89.41	161.08	7,115.5	-886.8	-556.4	672.0	3.21	1.20	2.98	
8,165.0	90.86	162.37	7,115.3	-971.3	-526.5	751.0	2.18	1.63	1.45	
8,255.0	90.76	161.33	7,114.0	-1,056.8	-500.4	851.0	1.16	-0.11	-1.16	
8,345.0	90.56	162.99	7,112.9	-1,142.5	-472.9	941.0	1.96	-0.22	1.84	
8,434.0	86.94	162.75	7,113.3	-1,227.5	-446.6	1,030.0	1.84	-1.82	-0.27	
8,524.0	91.60	164.41	7,112.9	-1,313.8	-421.2	1,119.9	3.46	2.95	1.84	
8,614.0	89.72	164.41	7,111.9	-1,400.5	-397.0	1,209.8	2.09	-2.09	0.00	
8,703.0	88.91	164.13	7,112.9	-1,486.2	-372.9	1,298.8	0.96	-0.91	-0.31	
8,793.0	89.12	162.35	7,114.5	-1,572.3	-347.0	1,388.7	1.99	0.23	-1.98	
8,882.0	90.63	161.16	7,114.7	-1,656.8	-319.1	1,477.7	2.16	1.70	-1.34	
8,972.0	89.96	159.29	7,114.2	-1,741.5	-286.6	1,567.7	2.21	-0.74	-2.08	
9,062.0	88.51	161.66	7,115.4	-1,826.3	-256.6	1,657.6	3.09	-1.61	2.63	
9,151.0	90.19	161.69	7,116.4	-1,910.8	-230.6	1,746.6	1.89	1.89	0.03	
9,240.0	89.45	160.81	7,116.7	-1,995.1	-202.0	1,835.6	1.29	-0.83	-0.99	
9,330.0	89.52	161.41	7,117.5	-2,080.2	-172.8	1,925.6	0.67	0.08	0.67	
9,420.0	90.70	162.75	7,117.3	-2,165.9	-145.2	2,015.6	1.96	1.31	1.49	
9,509.0	90.77	161.73	7,116.2	-2,250.6	-118.0	2,104.6	1.15	0.08	-1.15	
9,599.0	88.42	160.15	7,116.8	-2,335.7	-88.6	2,194.5	3.15	-2.61	-1.76	
9,688.0	88.68	161.21	7,119.1	-2,419.6	-59.2	2,283.5	1.23	0.29	1.19	
9,778.0	90.70	163.57	7,119.6	-2,505.4	-32.0	2,373.5	3.45	2.24	2.62	
9,868.0	90.69	164.10	7,118.5	-2,591.8	-6.9	2,463.4	0.59	-0.01	0.59	
9,957.0	90.12	162.95	7,117.9	-2,677.2	18.3	2,552.4	1.44	-0.64	-1.29	
10,046.0	88.31	161.89	7,119.1	-2,762.0	45.4	2,641.4	2.48	-2.03	-1.42	





Scientific Drilling International  
Survey Report



<b>Company:</b>	Antero Resources	<b>Local Co-ordinate Reference:</b>	Well Banner Unit 2H
<b>Project:</b>	Tyler County WV	<b>TVD Reference:</b>	Precision 525: GL 1188' + KB 19' @ 1207.0usft
<b>Site:</b>	Coastal 2 Pad: Banner/Prudence/Tabor	<b>MD Reference:</b>	Precision 525: GL 1188' + KB 19' @ 1207.0usft
<b>Well:</b>	Banner Unit 2H	<b>North Reference:</b>	Grid
<b>Wellbore:</b>	Original Wellpath	<b>Survey Calculation Method:</b>	Minimum Curvature
<b>Design:</b>	As Drilled	<b>Database:</b>	Antero NE

Measured Depth (usft)	Inclination (°)	Azimuth (°)	Vertical Depth (usft)	+N/-S (usft)	+E/-W (usft)	Vertical Section (usft)	Dogleg Rate (°/100usft)	Build Rate (°/100usft)	Turn Rate (°/100usft)
10,136.0	88.68	162.03	7,121.4	-2,847.5	73.4	2,731.3	0.56	0.41	0.38
10,226.0	92.34	165.15	7,120.6	-2,933.8	98.8	2,821.3	5.34	4.07	3.47
10,315.0	91.33	162.25	7,117.8	-3,019.1	123.7	2,910.2	3.45	-1.13	-3.26
10,405.0	90.15	161.12	7,116.6	-3,104.6	152.0	3,000.2	1.82	-1.31	-1.26
10,494.0	90.02	160.74	7,116.5	-3,188.7	181.1	3,089.1	0.45	-0.15	-0.43
10,584.0	88.00	158.36	7,118.0	-3,273.0	212.5	3,179.0	3.47	-2.24	-2.64
10,673.0	89.68	160.07	7,119.8	-3,356.2	244.1	3,267.9	2.69	1.89	1.92
10,763.0	90.19	162.13	7,119.9	-3,441.3	273.3	3,357.9	2.36	0.57	2.29
10,852.0	91.06	163.17	7,119.0	-3,526.3	299.8	3,446.9	1.52	0.98	1.17
10,942.0	90.86	161.30	7,117.5	-3,612.0	327.3	3,536.9	2.09	-0.22	-2.08
11,032.0	90.79	164.98	7,116.2	-3,696.1	353.4	3,626.8	4.09	-0.08	4.09
11,121.0	89.48	162.08	7,116.0	-3,783.4	378.6	3,715.8	3.58	-1.47	-3.26
11,211.0	88.88	158.16	7,117.3	-3,868.0	409.2	3,805.7	4.41	-0.67	-4.36
11,301.0	90.12	160.61	7,118.0	-3,952.2	440.9	3,895.6	3.05	1.38	2.72
11,391.0	90.45	162.02	7,117.6	-4,037.5	469.7	3,985.6	1.61	0.37	1.57
11,480.0	90.86	163.22	7,116.6	-4,122.4	496.3	4,074.6	1.42	0.46	1.35
11,570.0	88.81	160.72	7,116.8	-4,208.0	524.1	4,164.6	3.59	-2.28	-2.78
11,659.0	89.18	163.60	7,118.4	-4,292.7	551.4	4,253.5	3.26	0.42	3.24
11,749.0	89.11	166.58	7,119.7	-4,379.6	574.5	4,343.4	3.31	-0.08	3.31
11,839.0	89.41	164.26	7,120.9	-4,466.7	597.2	4,433.2	2.60	0.33	-2.58
11,928.0	90.01	161.77	7,121.4	-4,551.8	623.2	4,522.2	2.88	0.67	-2.80
12,018.0	89.71	161.27	7,121.6	-4,637.2	651.7	4,612.2	0.85	-0.33	-0.56
12,107.0	89.34	159.33	7,122.3	-4,721.0	681.7	4,701.1	2.22	-0.42	-2.18
12,197.0	89.64	157.41	7,123.1	-4,804.6	714.9	4,790.9	2.16	0.33	-2.13
12,286.0	90.79	159.35	7,122.8	-4,887.4	747.7	4,879.8	2.53	1.29	2.18
12,376.0	90.62	161.90	7,121.7	-4,972.2	777.5	4,969.7	2.84	-0.19	2.83
12,466.0	90.18	165.28	7,121.0	-5,056.6	803.0	5,059.7	3.79	-0.49	3.76
12,556.0	89.01	165.72	7,121.7	-5,145.7	825.5	5,149.5	1.39	-1.30	0.49
12,645.0	88.94	169.26	7,123.3	-5,232.6	844.8	5,238.1	3.98	-0.08	3.98
12,735.0	87.66	163.45	7,125.9	-5,319.9	866.0	5,327.7	6.61	-1.42	-6.46
12,825.0	90.31	164.39	7,127.5	-5,406.4	890.9	5,417.7	3.12	2.94	1.04
12,914.0	90.01	163.02	7,127.3	-5,491.8	915.9	5,506.6	1.58	-0.34	-1.54
13,004.0	89.64	160.35	7,127.6	-5,577.3	944.1	5,596.6	2.99	-0.41	-2.97
13,094.0	89.17	156.65	7,128.5	-5,661.0	977.1	5,686.4	4.14	-0.52	-4.11
13,183.0	89.31	159.20	7,129.7	-5,743.4	1,010.6	5,775.2	2.87	0.16	2.87
13,273.0	90.38	163.68	7,129.9	-5,828.7	1,039.2	5,865.1	5.12	1.19	4.98
13,363.0	90.45	163.44	7,129.3	-5,915.0	1,064.7	5,955.1	0.26	0.08	-0.27
13,452.0	89.57	163.27	7,129.3	-6,000.3	1,090.2	6,044.1	1.01	-0.99	-0.19
13,542.0	89.71	161.46	7,129.8	-6,085.1	1,117.4	6,134.1	2.02	0.16	-2.01
13,632.0	89.44	159.21	7,130.5	-6,170.8	1,147.7	6,224.0	2.52	-0.30	-2.50
13,721.0	89.71	160.86	7,131.1	-6,254.5	1,178.1	6,313.0	1.88	0.30	1.85
13,811.0	89.07	160.32	7,132.1	-6,339.3	1,208.0	6,402.9	0.93	-0.71	-0.60
13,901.0	89.47	164.51	7,133.3	-6,425.1	1,235.2	6,492.9	4.68	0.44	4.66





# Scientific Drilling International

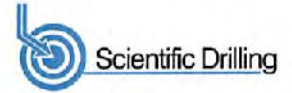
## Survey Report



<b>Company:</b>	Antero Resources	<b>Local Co-ordinate Reference:</b>	Well Banner Unit 2H
<b>Project:</b>	Tyler County WV	<b>TVD Reference:</b>	Precision 525: GL 1188' + KB 19' @ 1207.0usft
<b>Site:</b>	Coastal 2 Pad: Banner/Prudence/Tabor	<b>MD Reference:</b>	Precision 525: GL 1188' + KB 19' @ 1207.0usft
<b>Well:</b>	Banner Unit 2H	<b>North Reference:</b>	Grid
<b>Wellbore:</b>	Original Wellpath	<b>Survey Calculation Method:</b>	Minimum Curvature
<b>Design:</b>	As Drilled	<b>Database:</b>	Antero NE

Measured Depth (usft)	Inclination (°)	Azimuth (°)	Vertical Depth (usft)	+N/-S (usft)	+E/-W (usft)	Vertical Section (usft)	Dogleg Rate (°/100usft)	Build Rate (°/100usft)	Turn Rate (°/100usft)
13,990.0	90.11	165.66	7,133.6	-6,511.1	1,258.1	6,581.8	1.48	0.72	1.29
14,080.0	88.90	163.90	7,134.4	-6,596.0	1,281.7	6,671.7	2.37	-1.34	-1.96
14,170.0	88.73	164.21	7,136.2	-6,684.5	1,306.4	6,761.6	0.39	-0.19	0.34
14,259.0	90.65	164.63	7,136.7	-6,770.2	1,330.3	6,850.5	2.21	2.16	0.47
14,349.0	89.30	163.54	7,136.7	-6,856.7	1,355.0	6,940.4	1.93	-1.50	-1.21
14,439.0	89.87	163.72	7,137.4	-6,943.1	1,380.4	7,030.4	0.66	0.63	0.20
14,528.0	89.61	163.23	7,137.8	-7,028.4	1,405.7	7,119.4	0.62	-0.29	-0.55
14,618.0	90.01	162.99	7,138.1	-7,114.5	1,431.8	7,209.4	0.52	0.44	-0.27
14,708.0	90.14	163.21	7,138.0	-7,200.6	1,458.0	7,299.4	0.28	0.14	0.24
14,797.0	90.51	160.76	7,137.5	-7,285.3	1,485.5	7,388.3	2.78	0.42	-2.75
14,887.0	89.20	159.59	7,137.7	-7,369.9	1,516.1	7,478.3	1.95	-1.48	-1.30
14,977.0	89.23	159.43	7,138.9	-7,454.2	1,547.6	7,568.2	0.18	0.03	-0.18
15,066.0	90.28	160.73	7,139.3	-7,537.9	1,577.9	7,657.1	1.88	1.18	1.46
15,156.0	90.71	159.60	7,138.5	-7,622.6	1,608.4	7,747.1	1.34	0.48	-1.26
15,246.0	89.80	160.55	7,138.1	-7,707.2	1,639.1	7,837.0	1.46	-1.01	1.06
15,336.0	90.64	160.39	7,137.8	-7,792.0	1,669.2	7,927.0	0.95	0.93	-0.18
15,425.0	89.50	161.85	7,137.7	-7,876.2	1,698.0	8,016.0	2.08	-1.28	1.64
15,515.0	90.11	164.19	7,138.0	-7,962.3	1,724.2	8,106.0	2.69	0.68	2.60
15,605.0	89.17	161.61	7,138.5	-8,048.3	1,750.7	8,195.9	3.05	-1.04	-2.87
15,694.0	89.20	160.91	7,139.8	-8,132.6	1,779.3	8,284.9	0.79	0.03	-0.79
15,784.0	90.58	162.19	7,140.0	-8,217.9	1,807.8	8,374.9	2.09	1.53	1.42
15,873.0	90.38	161.07	7,139.2	-8,302.4	1,835.8	8,463.9	1.28	-0.22	-1.26
15,963.0	90.38	160.02	7,138.6	-8,387.2	1,865.8	8,553.9	1.17	0.00	-1.17
16,053.0	90.01	161.37	7,138.3	-8,472.2	1,895.6	8,643.8	1.56	-0.41	1.50
16,143.0	90.47	161.95	7,138.0	-8,557.6	1,923.9	8,733.8	0.82	0.51	0.64
16,232.0	89.33	161.82	7,138.1	-8,642.2	1,951.5	8,822.8	1.29	-1.28	-0.15
16,322.0	89.27	162.02	7,139.2	-8,727.7	1,979.5	8,912.8	0.23	-0.07	0.22
16,412.0	89.70	162.45	7,140.0	-8,813.4	2,006.9	9,002.8	0.68	0.48	0.48
16,501.0	90.64	162.26	7,139.8	-8,898.3	2,033.9	9,091.8	1.08	1.06	-0.21
16,591.0	90.67	163.93	7,138.7	-8,984.4	2,060.1	9,181.8	1.86	0.03	1.86
16,681.0	89.97	163.32	7,138.2	-9,070.7	2,085.5	9,271.8	1.03	-0.78	-0.68
16,771.0	90.61	163.23	7,137.8	-9,156.9	2,111.3	9,361.7	0.72	0.71	-0.10
16,860.0	89.37	162.04	7,137.8	-9,241.8	2,137.9	9,450.7	1.93	-1.39	-1.34
16,950.0	89.83	162.13	7,138.4	-9,327.5	2,165.6	9,540.7	0.52	0.51	0.10
17,040.0	91.11	162.29	7,137.7	-9,413.2	2,193.1	9,630.7	1.43	1.42	0.18
17,129.0	90.00	160.84	7,136.8	-9,497.6	2,221.2	9,719.7	2.05	-1.25	-1.63
17,219.0	88.69	159.00	7,137.8	-9,582.1	2,252.1	9,809.6	2.51	-1.46	-2.04
17,309.0	89.94	162.42	7,138.9	-9,667.0	2,281.9	9,899.6	4.05	1.39	3.80
17,399.0	90.04	161.41	7,138.9	-9,752.6	2,309.8	9,989.6	1.13	-0.11	-1.12
17,488.0	90.04	160.79	7,138.9	-9,836.8	2,338.6	10,078.6	0.70	0.00	-0.70
17,578.0	90.14	160.62	7,138.7	-9,921.7	2,368.4	10,168.6	0.22	0.11	-0.19
17,668.0	90.47	160.42	7,138.3	-10,006.6	2,398.4	10,258.5	0.43	0.37	-0.22
17,757.0	89.73	161.08	7,138.1	-10,090.6	2,427.7	10,347.5	1.11	-0.83	0.74
17,847.0	88.99	162.37	7,139.1	-10,176.1	2,455.9	10,437.5	1.65	-0.82	1.43





<b>Company:</b>	Antero Resources	<b>Local Co-ordinate Reference:</b>	Well Banner Unit 2H
<b>Project:</b>	Tyler County WV	<b>TVD Reference:</b>	Precision 525: GL 1188' + KB 19' @ 1207.0usft
<b>Site:</b>	Coastal 2 Pad: Banner/Prudence/Tabor	<b>MD Reference:</b>	Precision 525: GL 1188' + KB 19' @ 1207.0usft
<b>Well:</b>	Banner Unit 2H	<b>North Reference:</b>	Grid
<b>Wellbore:</b>	Original Wellpath	<b>Survey Calculation Method:</b>	Minimum Curvature
<b>Design:</b>	As Drilled	<b>Database:</b>	Antero NE

Survey										
Measured Depth (usft)	Inclination (°)	Azimuth (°)	Vertical Depth (usft)	+N/-S (usft)	+E/-W (usft)	Vertical Section (usft)	Dogleg Rate (°/100usft)	Build Rate (°/100usft)	Turn Rate (°/100usft)	
17,937.0	89.30	162.98	7,140.5	-10,262.0	2,482.7	10,527.5	0.76	0.34	0.68	
18,027.0	90.94	165.43	7,140.3	-10,348.6	2,507.2	10,617.4	3.28	1.82	2.72	
18,116.0	89.50	163.93	7,139.9	-10,434.4	2,530.7	10,706.3	2.34	-1.62	-1.69	
18,136.0	89.67	163.33	7,140.1	-10,453.6	2,536.4	10,726.3	3.12	0.85	-3.00	
<b>Last SDI MWD @ 18136</b>										
18,200.0	89.67	163.33	7,140.4	-10,514.9	2,554.7	10,790.3	0.00	0.00	0.00	
<b>Projection To Bit @ 18200 MD / 7140 TVD</b>										

Formations							
Measured Depth (usft)	Vertical Depth (usft)	Name	Lithology	Dip (°)	Dip Direction (°)		
6,784.0	6,678.5	SCMR @ 8784		0.00			
6,963.0	6,841.6	MDLX @ 6963		0.00			
7,134.0	6,974.5	BRKT @ 7134		0.00			
7,176.0	7,002.4	TLLY @ 7176		0.00			
7,291.0	7,065.3	MRCL_HOT @ 7291		0.00			

Design Annotations					
Measured Depth (usft)	Vertical Depth (usft)	Local Coordinates		Comment	
		+N/-S (usft)	+E/-W (usft)		
6,250.0	6,162.1	174.3	-707.5	Last SDI Gyro @ 6250 MD	
6,347.0	6,255.6	177.5	-733.1	First SDI MWD @ 6347	
18,136.0	7,140.1	-10,453.6	2,536.4	Last SDI MWD @ 18136	
18,200.0	7,140.4	-10,514.9	2,554.7	Projection To Bit @ 18200 MD / 7140 TVD	

Checked By: \_\_\_\_\_ Approved By: \_\_\_\_\_ Date: \_\_\_\_\_