



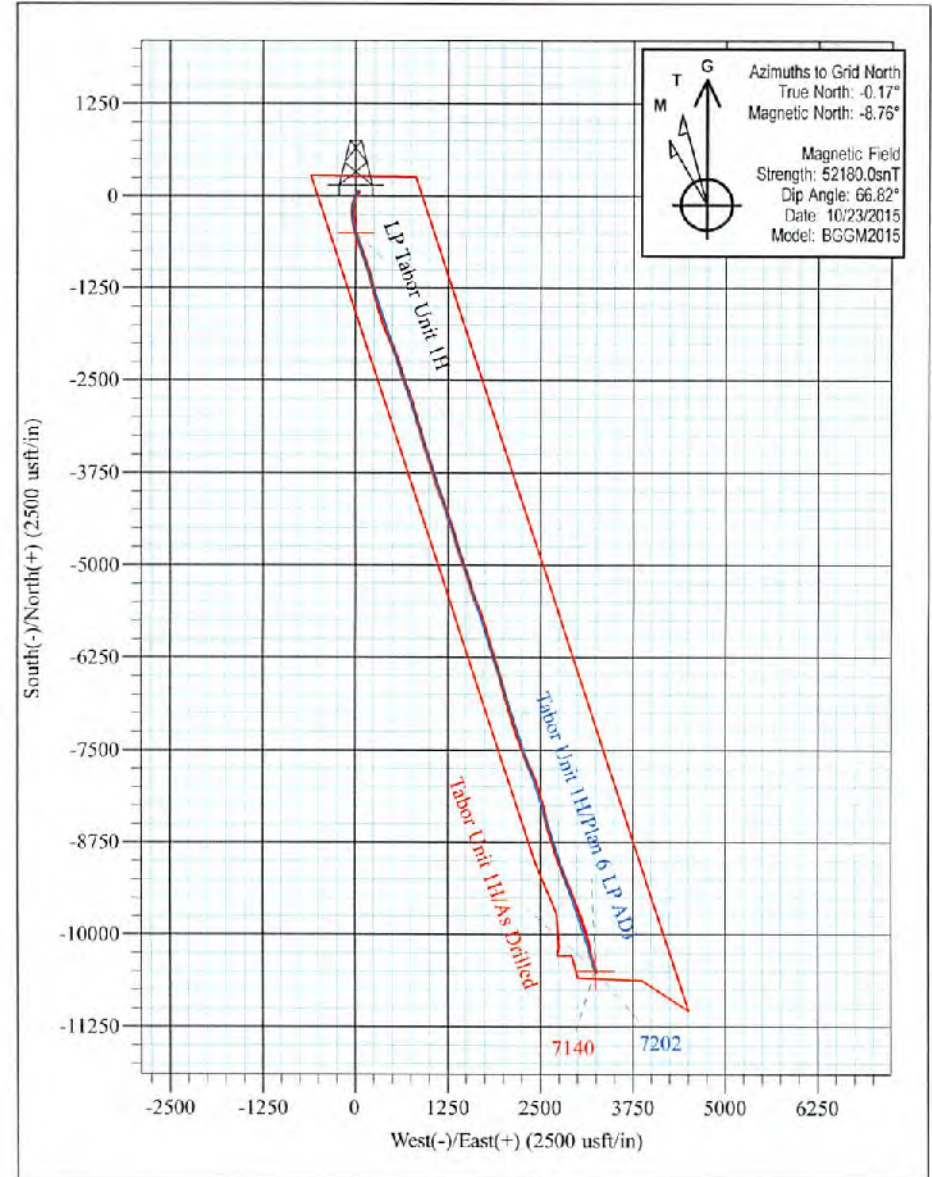
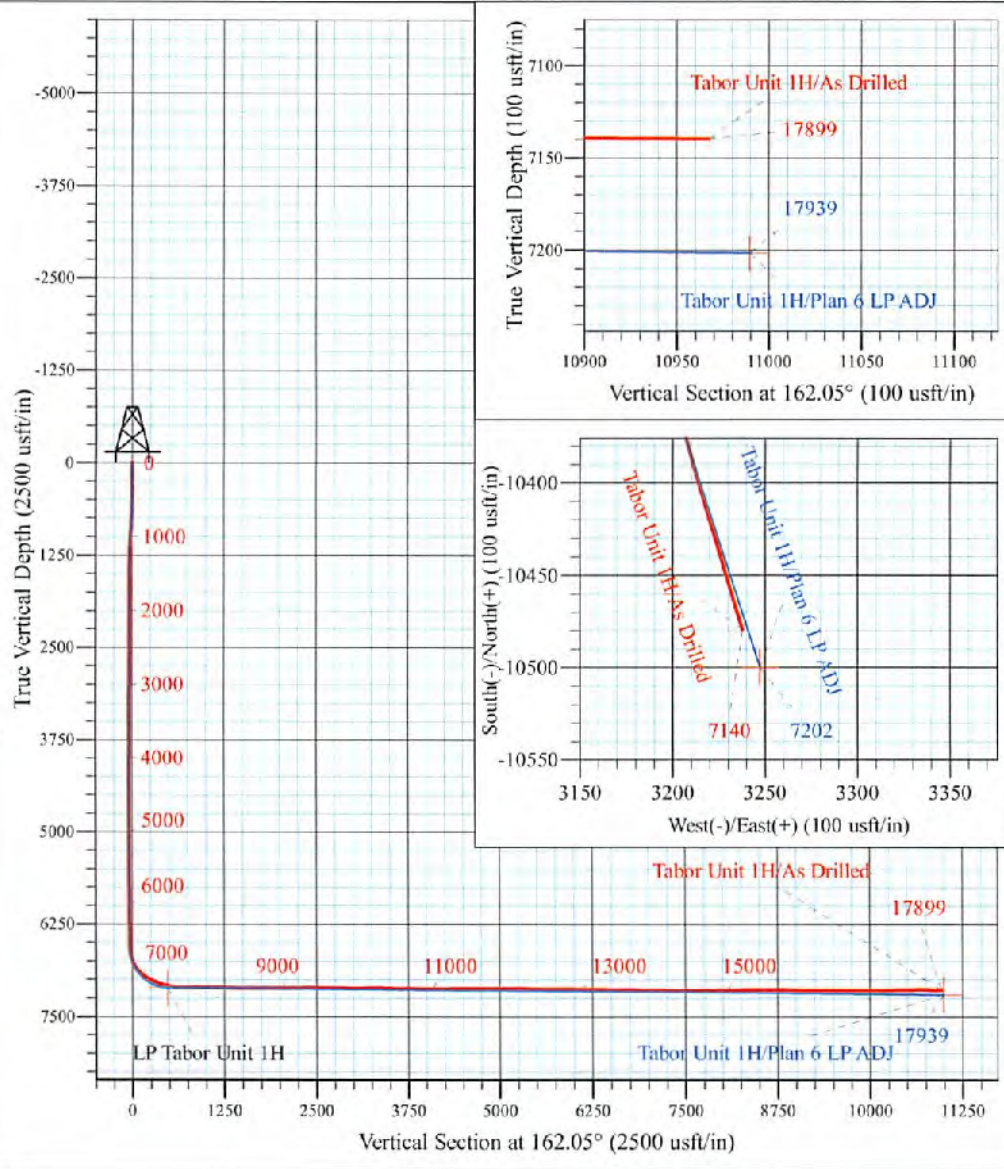
Coastal 2 Pad: Banner/Prudence/Tabor
 Tabor Unit 1H
 Plan 6 LP ADJ
 Precision 525: 1188' GL + 19' KB @ 1207.0usft
 Tyler County WV

PROJECT DETAILS:
 Geodetic System: Universal Transverse Mercator (US Survey Feet)
 Datum: NAD 1927 (NADCON CONUS)
 Ellipsoid: Clarke 1866
 Zone: Zone 17N (84 W to 78 W)
 System Datum: Mean Sea Level



WELL DETAILS: **Tabor Unit 1H SHL**

+N/-S	+E/-W	Northing	Easting	Latitude	Longitude
0.0	0.0	14318138.80	1717772.27	39° 25' 43.284 N	80° 43' 33.805 W



Tabor Unit 1H
Approx. BHL
 39° 23' 59.568 N 80° 42' 52.950 W

Shane Rhodes
 12:54, November 09 2015
 Scientific Drilling International
 124 Vista Drive
 Charleroi, PA 15022



Scientific Drilling International
Survey Report



Company:	Antero Resources	Local Co-ordinate Reference:	Well Tabor Unit 1H
Project:	Tyler County WV	TVD Reference:	Precision 525: 1188' GL + 19' KB @ 1207.0usft
Site:	Coastal 2 Pad: Banner/Prudence/Tabor	MD Reference:	Precision 525: 1188' GL + 19' KB @ 1207.0usft
Well:	Tabor Unit 1H	North Reference:	Grid
Wellbore:	Original Wellpath	Survey Calculation Method:	Minimum Curvature
Design:	As Drilled	Database:	Antero NE

Project	Tyler County WV, Tyler Co West Virginia		
Map System:	Universal Transverse Mercator (US Survey Feet)	System Datum:	Mean Sea Level
Geo Datum:	NAD 1927 (NADCON CONUS)		
Map Zone:	Zone 17N (84 W to 78 W)		

Site	Coastal 2 Pad: Banner/Prudence/Tabor				
Site Position:		Northing:	14,318,150.53 usft	Latitude:	39° 25' 43.400 N
From:	Map	Easting:	1,717,756.08 usft	Longitude:	80° 43' 34.011 W
Position Uncertainty:	0.0 usft	Slot Radius:	13-3/16 "	Grid Convergence:	0.17 °

Well	Tabor Unit 1H, Marcellus					
Well Position	+N-S	0.0 usft	Northing:	14,318,138.80 usft	Latitude:	39° 25' 43.284 N
	+E-W	0.0 usft	Easting:	1,717,772.27 usft	Longitude:	80° 43' 33.805 W
Position Uncertainty		2.0 usft	Wellhead Elevation:	1,207.0 usft	Ground Level:	1,188.0 usft

Wellbore	Original Wellpath				
Magnetics	Model Name	Sample Date	Declination (°)	Dip Angle (°)	Field Strength (nT)
	BGGM2015	10/23/2015	-8.59	66.82	52,160

Design	As Drilled				
Audit Notes:					
Version:	1.0	Phase:	ACTUAL	Tie On Depth:	0.0
Vertical Section:	Depth From (TVD) (usft)	+N-S (usft)	+E-W (usft)	Direction (°)	
	0.0	0.0	0.0	162.05	

Survey Program	Date	11/9/2015			
From (usft)	To (usft)	Survey (Wellbore)	Tool Name	Description	
100.0	6,300.4	Survey #6 Def Final Gyro (Original Wellpa	Standard Keeper 104	Standard Wireline Keeper ver 1.0.4	
6,348.0	17,899.0	Survey #7 MWD Surveys (Original Wellpa	SDI MWD	Scientific Drilling Intl. MWD - Standard ver 1.0.1	

Survey										
Measured Depth (usft)	Inclination (°)	Azimuth (°)	Vertical Depth (usft)	+N-S (usft)	+E-W (usft)	Vertical Section (usft)	Dogleg Rate (°/100usft)	Build Rate (°/100usft)	Turn Rate (°/100usft)	
0.0	0.00	0.00	0.0	0.0	0.0	0.0	0.00	0.00	0.00	
100.0	0.23	229.41	100.0	-0.1	-0.2	0.1	0.23	0.23	0.00	
First Gyro @ 100 MD										
125.0	0.29	226.00	125.0	-0.2	-0.2	0.1	0.25	0.24	-13.64	
150.0	0.32	214.84	150.0	-0.3	-0.3	0.2	0.27	0.12	-44.64	
175.0	0.25	201.16	175.0	-0.4	-0.4	0.3	0.39	-0.28	-54.72	
200.0	0.14	184.29	200.0	-0.5	-0.4	0.3	0.49	-0.44	-67.48	
225.0	0.24	216.79	225.0	-0.6	-0.4	0.4	0.59	0.40	138.00	
250.0	0.28	169.36	250.0	-0.7	-0.5	0.5	0.88	0.16	-197.72	
275.0	0.40	174.06	275.0	-0.8	-0.4	0.6	0.49	0.48	18.80	

OFFICE OF OIL AND GAS JUL 20 2011

09/15/2017



Scientific Drilling International
Survey Report



Company:	Antero Resources	Local Co-ordinate Reference:	Well Tabor Unit 1H
Project:	Tyler County WV	TVD Reference:	Precision 525: 1188' GL + 19' KB @ 1207.0usft
Site:	Coastal 2 Pad: Banner/Prudence/Tabor	MD Reference:	Precision 525: 1188' GL + 19' KB @ 1207.0usft
Well:	Tabor Unit 1H	North Reference:	Grid
Wellbore:	Original Wellpath	Survey Calculation Method:	Minimum Curvature
Design:	As Drilled	Database:	Antero NE

Survey										
Measured Depth (usft)	Inclination (°)	Azimuth (°)	Vertical Depth (usft)	+N/-S (usft)	+E/-W (usft)	Vertical Section (usft)	Dogleg Rate (°/100usft)	Build Rate (°/100usft)	Turn Rate (°/100usft)	
300.0	0.42	199.87	300.0	-1.0	-0.5	0.8	0.74	0.08	103.24	
325.0	0.46	209.62	325.0	-1.2	-0.5	0.9	0.34	0.16	39.00	
350.0	0.51	202.02	350.0	-1.4	-0.6	1.1	0.33	0.20	-30.40	
375.0	0.39	187.54	375.0	-1.5	-0.7	1.3	0.66	-0.48	-57.92	
400.0	0.41	183.32	400.0	-1.7	-0.7	1.4	0.14	0.08	-16.88	
425.0	0.50	172.62	425.0	-1.9	-0.7	1.6	0.49	0.36	-42.00	
450.0	0.52	169.73	450.0	-2.1	-0.7	1.8	0.14	0.08	-12.36	
475.0	0.46	171.38	475.0	-2.3	-0.6	2.0	0.25	-0.24	6.60	
500.0	0.45	71.84	500.0	-2.4	-0.5	2.1	2.78	-0.04	-398.16	
525.0	0.70	56.81	525.0	-2.3	-0.3	2.1	1.16	1.00	-60.12	
550.0	0.83	58.20	550.0	-2.1	0.0	2.0	0.53	0.52	5.56	
575.0	0.96	50.99	575.0	-1.9	0.3	1.9	0.69	0.52	-28.84	
600.0	1.33	42.24	600.0	-1.5	0.7	1.7	1.63	1.48	-35.00	
625.0	2.15	36.58	625.0	-1.0	1.1	1.3	3.35	3.28	-22.64	
650.0	2.92	36.26	649.9	-0.1	1.8	0.6	3.08	-3.08	-1.28	
675.0	3.60	34.29	674.9	1.1	2.6	-0.2	2.76	2.72	-7.88	
700.0	4.09	34.72	699.8	2.5	3.6	-1.3	1.86	1.96	1.72	
701.6	4.12	34.75	701.4	2.6	3.6	-1.3	1.80	1.90	1.90	
725.1	4.21	33.38	724.9	4.0	4.6	-2.4	0.58	0.38	-5.91	
751.0	4.48	34.30	750.7	5.6	5.7	-3.6	1.08	1.04	3.62	
776.5	4.76	33.42	776.1	7.3	6.8	-4.9	1.14	1.10	-3.46	
800.1	5.43	34.64	799.6	9.1	8.0	-6.2	2.87	2.84	5.17	
825.9	5.61	34.30	825.3	11.1	9.4	-7.7	0.71	0.70	-1.32	
851.4	5.67	34.66	850.7	13.2	10.8	-9.2	0.27	0.24	1.41	
875.5	5.70	34.50	874.6	15.1	12.2	-10.6	0.14	0.12	-0.67	
901.1	5.75	34.63	900.1	17.2	13.6	-12.2	0.20	0.20	0.51	
927.1	5.83	33.73	926.0	19.4	15.1	-13.8	0.47	0.31	-3.46	
950.7	5.84	34.58	949.5	21.4	16.4	-15.3	0.37	0.04	3.60	
975.4	5.62	34.51	974.0	23.4	17.8	-16.8	0.89	-0.89	-0.28	
1,001.1	5.35	33.41	999.7	25.5	19.2	-18.3	1.13	-1.05	-4.28	
1,026.8	5.30	34.69	1,025.3	27.4	20.5	-19.8	0.50	-0.19	4.88	
1,051.5	4.86	34.52	1,049.8	29.2	21.8	-21.1	1.79	-1.79	-0.69	
1,076.2	4.64	34.12	1,074.5	30.9	22.9	-22.4	0.90	-0.89	-1.62	
1,100.6	4.54	35.02	1,098.7	32.5	24.0	-23.5	0.51	-0.41	3.70	
1,125.7	4.08	36.09	1,123.8	34.1	25.1	-24.7	1.86	-1.83	4.26	
1,150.1	3.84	36.06	1,148.1	35.4	26.1	-25.7	0.98	-0.98	-0.12	
1,175.9	3.47	37.05	1,173.9	36.8	27.1	-26.6	1.45	-1.43	3.87	
1,201.9	3.27	36.88	1,199.9	38.0	28.0	-27.5	0.77	-0.77	-0.69	
1,225.9	3.00	37.63	1,223.8	39.0	28.8	-28.2	1.14	-1.13	3.13	
1,250.3	2.94	37.47	1,248.1	40.0	29.6	-29.0	0.25	-0.25	-0.66	
1,276.1	2.51	39.27	1,273.9	41.0	30.4	-29.6	1.70	-1.67	6.97	
1,300.9	2.30	39.88	1,298.8	41.8	31.0	-30.2	0.85	-0.84	2.45	
1,325.6	2.09	40.81	1,323.4	42.5	31.6	-30.7	0.86	-0.85	3.77	



Scientific Drilling International
Survey Report



Company:	Antero Resources	Local Co-ordinate Reference:	Well Tabor Unit 1H
Project:	Tyler County WV	TVD Reference:	Precision 525: 1188' GL + 19' KB @ 1207.0usft
Site:	Coastal 2 Pad: Banner/Prudence/Tabor	MD Reference:	Precision 525: 1188' GL + 19' KB @ 1207.0usft
Well:	Tabor Unit 1H	North Reference:	Grid
Wellbore:	Original Wellpath	Survey Calculation Method:	Minimum Curvature
Design:	As Drilled	Database:	Antero NE

Measured Depth (usft)	Inclination (°)	Azimuth (°)	Vertical Depth (usft)	+N/-S (usft)	+E/-W (usft)	Vertical Section (usft)	Dogleg Rate (°/100usft)	Build Rate (°/100usft)	Turn Rate (°/100usft)
1,351.5	1.92	44.87	1,349.3	43.2	32.3	-31.1	0.85	-0.66	15.68
1,375.9	1.81	42.43	1,373.7	43.7	32.8	-31.5	0.56	-0.45	-10.02
1,401.7	1.38	43.89	1,399.5	44.3	33.3	-31.9	1.67	-1.66	5.65
1,426.2	1.25	46.77	1,424.0	44.7	33.7	-32.1	0.60	-0.53	11.76
1,450.3	0.99	47.37	1,448.1	45.0	34.0	-32.3	1.08	-1.08	2.49
1,476.6	0.86	49.34	1,474.4	45.3	34.3	-32.5	0.51	-0.49	7.48
1,500.8	0.75	51.83	1,498.5	45.5	34.6	-32.6	0.48	-0.46	10.33
1,525.3	0.65	45.88	1,523.1	45.7	34.8	-32.7	0.50	-0.41	-24.23
1,551.3	0.51	40.33	1,549.0	45.9	35.0	-32.9	0.58	-0.54	-21.40
1,575.5	0.40	45.35	1,573.2	46.0	35.1	-32.9	0.48	-0.45	20.73
1,600.1	0.28	54.64	1,597.9	46.1	35.3	-33.0	0.53	-0.49	37.66
1,626.9	0.22	41.48	1,624.6	46.2	35.3	-33.0	0.31	-0.22	-49.20
1,651.1	0.22	45.90	1,648.8	46.3	35.4	-33.1	0.07	0.00	18.22
1,675.7	0.24	82.80	1,673.4	46.3	35.5	-33.1	0.29	0.08	68.64
1,701.9	0.22	82.38	1,699.6	46.3	35.6	-33.1	0.31	-0.08	74.74
1,725.1	0.22	70.99	1,722.9	46.4	35.7	-33.1	0.19	0.00	-48.88
1,751.3	0.27	75.52	1,749.1	46.4	35.8	-33.1	0.20	0.19	17.29
1,776.0	0.22	75.32	1,773.8	46.4	35.9	-33.1	0.20	-0.20	-0.81
1,801.0	0.23	53.42	1,798.7	46.5	36.0	-33.1	0.34	0.04	-87.74
1,825.6	0.29	72.89	1,823.3	46.5	36.1	-33.1	0.43	0.24	79.21
1,850.3	0.25	73.07	1,848.1	46.5	36.2	-33.1	0.16	-0.16	0.73
1,876.5	0.28	53.70	1,874.3	46.6	36.3	-33.1	0.36	0.11	-74.02
1,901.3	0.29	73.99	1,899.0	46.7	36.4	-33.2	0.41	0.04	81.95
1,925.8	0.35	59.10	1,923.5	46.7	36.5	-33.2	0.42	0.24	-60.80
1,950.5	0.17	49.64	1,948.3	46.8	36.6	-33.2	0.74	-0.73	-38.21
1,976.7	0.29	21.76	1,974.4	46.9	36.7	-33.3	0.61	0.46	-106.53
2,001.4	0.13	356.16	1,999.2	46.9	36.7	-33.4	0.73	-0.65	-103.52
2,025.4	0.16	22.72	2,023.2	47.0	36.7	-33.4	0.30	0.12	110.57
2,051.6	0.22	348.08	2,049.3	47.1	36.7	-33.5	0.48	0.23	-132.42
2,076.6	0.16	9.96	2,074.4	47.2	36.7	-33.6	0.37	-0.24	87.49
2,101.7	0.24	334.32	2,099.4	47.2	36.7	-33.6	0.57	0.32	-142.05
2,126.3	0.23	337.39	2,124.1	47.3	36.6	-33.7	0.07	-0.04	12.45
2,151.5	0.14	356.26	2,149.2	47.4	36.6	-33.8	0.43	-0.36	75.12
2,176.3	0.15	292.20	2,174.0	47.5	36.6	-33.9	0.62	0.04	-258.41
2,201.1	0.20	321.85	2,198.8	47.5	36.5	-33.9	0.41	0.20	119.51
2,226.2	0.12	322.32	2,224.0	47.6	36.5	-34.0	0.32	-0.32	1.87
2,250.9	0.09	324.20	2,248.7	47.6	36.5	-34.0	0.12	-0.12	7.61
2,276.5	0.08	280.28	2,274.2	47.6	36.4	-34.1	0.25	-0.04	-172.03
2,301.7	0.09	327.42	2,299.5	47.6	36.4	-34.1	0.27	0.04	186.69
2,326.5	0.16	2.01	2,324.2	47.7	36.4	-34.2	0.40	0.28	139.70
2,351.4	0.23	333.72	2,349.2	47.8	36.4	-34.2	0.47	0.28	-113.43
2,376.6	0.07	33.75	2,374.4	47.8	36.4	-34.3	0.81	-0.63	238.21
2,401.5	0.25	340.79	2,399.2	47.9	36.3	-34.4	0.87	0.72	-213.03



Scientific Drilling International
Survey Report



Company:	Antero Resources	Local Co-ordinate Reference:	Well Tabor Unit 1H
Project:	Tyler County WV	TVD Reference:	Precision 525: 1188' GL + 19' KB @ 1207.0usft
Site:	Coastal 2 Pad; Banner/Prudence/Tabor	MD Reference:	Precision 525: 1188' GL + 19' KB @ 1207.0usft
Well:	Tabor Unit 1H	North Reference:	Grid
Wellbore:	Original Wellpath	Survey Calculation Method:	Minimum Curvature
Design:	As Drilled	Database:	Antero NE

Measured Depth (usft)	Inclination (°)	Azimuth (°)	Vertical Depth (usft)	+N/-S (usft)	+E/-W (usft)	Vertical Section (usft)	Dogleg Rate (°/100usft)	Build Rate (°/100usft)	Turn Rate (°/100usft)
2,426.8	0.23	354.18	2,424.5	48.0	35.3	-34.5	0.23	-0.08	52.86
2,450.2	0.30	42.44	2,448.0	48.1	35.4	-34.5	0.96	0.30	205.98
2,475.9	0.21	46.65	2,473.6	48.2	36.4	-34.6	0.36	-0.35	16.42
2,502.0	0.10	355.68	2,499.8	48.2	36.5	-34.6	0.63	-0.42	-191.09
2,526.5	0.12	348.59	2,524.3	48.3	36.5	-34.7	0.10	0.08	-32.98
2,551.2	0.13	346.91	2,548.9	48.3	36.5	-34.7	0.04	0.04	-6.82
2,576.2	0.15	348.67	2,573.9	48.4	36.4	-34.8	0.08	0.08	7.04
2,600.9	0.10	339.10	2,598.6	48.4	36.4	-34.8	0.22	-0.20	-38.81
2,625.5	0.15	327.44	2,623.3	48.5	36.4	-34.9	0.23	0.20	-47.30
2,650.6	0.11	344.75	2,648.4	48.5	36.4	-35.0	0.22	-0.16	68.91
2,675.3	0.12	303.91	2,673.0	48.6	36.4	-35.0	0.33	0.04	-165.75
2,702.1	0.14	307.66	2,699.8	48.6	36.3	-35.1	0.08	0.07	13.98
2,725.4	0.09	274.37	2,723.2	48.6	36.3	-35.1	0.35	-0.21	-142.63
2,750.5	0.14	308.07	2,748.2	48.6	36.2	-35.1	0.33	0.20	134.58
2,775.7	0.11	304.88	2,773.4	48.7	36.2	-35.2	0.12	-0.12	-12.66
2,800.7	0.14	308.34	2,798.5	48.7	36.1	-35.2	0.12	0.12	13.80
2,825.9	0.21	308.62	2,823.7	48.8	36.1	-35.3	0.26	0.26	1.11
2,850.8	0.16	294.90	2,848.5	48.8	36.0	-35.3	0.27	-0.20	-55.28
2,875.5	0.14	293.35	2,873.3	48.8	35.9	-35.4	0.08	-0.08	-6.26
2,901.1	0.15	269.44	2,898.9	48.8	35.9	-35.4	0.24	0.04	-93.51
2,926.0	0.37	322.54	2,923.7	48.9	35.8	-35.5	1.23	0.66	213.60
2,950.3	0.23	299.45	2,948.1	49.0	35.7	-35.6	0.75	-0.58	-94.86
2,975.1	0.19	296.19	2,972.8	49.0	35.6	-35.7	0.17	-0.16	-13.15
3,001.5	0.23	295.70	2,999.2	49.1	35.5	-35.7	0.15	0.15	-1.86
3,026.2	0.21	292.37	3,024.0	49.1	35.5	-35.8	0.10	-0.08	-13.44
3,050.7	0.30	309.02	3,048.4	49.2	35.4	-35.9	0.47	0.37	68.21
3,075.1	0.30	300.45	3,072.9	49.2	35.3	-36.0	0.18	0.00	-35.02
3,101.9	0.35	302.96	3,099.6	49.3	35.1	-36.1	0.19	0.19	9.36
3,126.6	0.36	305.38	3,124.4	49.4	35.0	-36.2	0.07	0.04	9.79
3,151.8	0.34	303.59	3,149.5	49.5	34.9	-36.3	0.09	-0.08	-7.12
3,176.2	0.40	298.86	3,174.0	49.6	34.7	-36.5	0.28	0.25	-19.34
3,200.6	0.35	304.85	3,198.4	49.7	34.6	-36.6	0.26	-0.20	24.54
3,225.5	0.37	293.82	3,223.3	49.7	34.5	-36.7	0.29	0.08	-44.30
3,250.0	0.38	297.18	3,247.8	49.8	34.3	-36.8	0.10	0.04	13.73
3,276.9	0.31	295.89	3,274.6	49.9	34.2	-36.9	0.26	-0.26	-4.81
3,301.8	0.35	301.35	3,299.5	49.9	34.1	-37.0	0.20	0.16	21.89
3,325.0	0.33	299.23	3,322.8	50.0	33.9	-37.1	0.10	-0.09	-9.13
3,351.5	0.30	301.86	3,349.2	50.1	33.8	-37.2	0.13	-0.11	9.94
3,376.1	0.28	300.55	3,373.9	50.2	33.7	-37.3	0.09	-0.08	-5.31
3,400.9	0.26	292.25	3,398.7	50.2	33.6	-37.4	0.18	-0.08	-33.48
3,425.6	0.22	289.21	3,423.4	50.2	33.5	-37.5	0.17	-0.16	-12.31
3,450.2	0.26	303.48	3,447.9	50.3	33.4	-37.5	0.29	0.16	58.17
3,475.2	0.27	301.13	3,472.9	50.4	33.3	-37.6	0.06	0.04	-9.38
3,500.1	0.27	299.35	3,497.8	50.4	33.2	-37.7	0.03	0.00	-7.16



Scientific Drilling International
Survey Report



Company:	Antero Resources	Local Co-ordinate Reference:	Well Tabor Unit 1H
Project:	Tyler County WV	TVD Reference:	Precision 525: 1188' GL + 19' KB @ 1207.0usft
Site:	Coastal 2 Pad: Banner/Prudence/Tabor	MD Reference:	Precision 525: 1188' GL + 19' KB @ 1207.0usft
Well:	Tabor Unit 1H	North Reference:	Grid
Wellbore:	Original Wellpath	Survey Calculation Method:	Minimum Curvature
Design:	As Drilled	Database:	Antero NE

Measured Depth (usft)	Inclination (°)	Azimuth (°)	Vertical Depth (usft)	+N/-S (usft)	+E/-W (usft)	Vertical Section (usft)	Dogleg Rate (°/100usft)	Build Rate (°/100usft)	Turn Rate (°/100usft)
3,525.0	0.28	292.02	3,522.8	50.5	33.1	-37.8	0.15	0.04	-29.36
3,551.7	0.29	307.20	3,549.5	50.5	33.0	-37.9	0.28	0.04	56.90
3,576.4	0.25	286.01	3,574.2	50.6	32.9	-38.0	0.43	-0.16	-85.75
3,601.4	0.18	293.69	3,599.1	50.6	32.8	-38.0	0.30	-0.28	30.77
3,626.1	0.21	295.36	3,623.8	50.6	32.7	-38.1	0.12	0.12	6.77
3,650.8	0.24	292.39	3,648.5	50.7	32.6	-38.2	0.13	0.12	-12.01
3,675.7	0.27	294.54	3,673.5	50.7	32.5	-38.2	0.13	0.12	8.62
3,700.5	0.24	276.42	3,698.2	50.8	32.4	-38.3	0.35	-0.12	-73.21
3,725.3	0.30	291.21	3,723.1	50.8	32.3	-38.4	0.37	0.24	59.52
3,750.2	0.23	278.95	3,748.0	50.8	32.2	-38.4	0.36	-0.28	-49.22
3,776.9	0.28	262.16	3,774.6	50.8	32.1	-38.5	0.29	0.11	-62.96
3,801.1	0.22	266.70	3,798.8	50.8	32.0	-38.5	0.18	-0.17	18.77
3,825.7	0.26	274.79	3,823.4	50.8	31.9	-38.5	0.21	0.16	32.87
3,851.9	0.22	277.80	3,849.7	50.8	31.8	-38.6	0.16	-0.15	10.71
3,876.5	0.24	284.37	3,874.3	50.8	31.7	-38.6	0.14	0.03	27.51
3,900.8	0.26	270.65	3,898.5	50.9	31.8	-38.6	0.26	0.03	-56.53
3,925.1	0.23	283.85	3,922.8	50.9	31.5	-38.7	0.26	-0.12	54.34
3,950.1	0.27	286.12	3,947.8	50.9	31.4	-38.8	0.17	0.16	9.10
3,976.4	0.26	279.94	3,974.1	50.9	31.3	-38.8	0.11	-0.04	-23.48
4,001.3	0.26	272.85	3,999.1	50.9	31.1	-38.9	0.13	0.00	-28.41
4,025.7	0.33	281.46	4,023.4	51.0	31.0	-38.9	0.34	0.29	35.33
4,052.3	0.24	278.44	4,050.1	51.0	30.9	-39.0	0.34	-0.34	-11.34
4,076.8	0.28	274.48	4,074.5	51.0	30.8	-39.0	0.18	0.16	-16.19
4,101.0	0.29	263.01	4,098.8	51.0	30.7	-39.1	0.18	0.04	35.20
4,126.1	0.26	273.82	4,123.8	51.0	30.5	-39.1	0.21	-0.12	-36.64
4,150.5	0.29	285.47	4,148.3	51.0	30.4	-39.2	0.26	0.12	47.71
4,177.2	0.29	286.05	4,174.9	51.1	30.3	-39.3	0.01	0.00	2.17
4,202.0	0.25	283.24	4,199.7	51.1	30.2	-39.3	0.17	-0.18	-11.36
4,226.3	0.22	302.37	4,224.0	51.2	30.1	-39.4	0.34	-0.12	78.63
4,251.4	0.22	315.73	4,249.1	51.2	30.0	-39.5	0.20	0.00	53.18
4,276.6	0.31	323.19	4,274.3	51.3	29.9	-39.6	0.36	0.36	29.63
4,301.2	0.27	323.48	4,298.9	51.4	29.9	-39.7	0.16	-0.16	1.18
4,326.1	0.30	336.44	4,323.8	51.5	29.8	-39.8	0.28	0.12	52.05
4,350.4	0.29	340.00	4,348.2	51.6	29.8	-39.9	0.09	-0.04	14.61
4,376.8	0.23	347.37	4,374.6	51.7	29.7	-40.1	0.26	-0.23	27.92
4,400.0	0.28	350.12	4,397.8	51.8	29.7	-40.2	0.22	0.22	11.85
4,426.8	0.27	22.21	4,424.5	52.0	29.7	-40.3	0.57	-0.04	120.01
4,451.9	0.21	37.80	4,449.6	52.1	29.8	-40.3	0.35	-0.24	62.19
4,476.5	0.25	27.74	4,474.2	52.1	29.8	-40.4	0.23	0.16	-40.81
4,501.3	0.31	32.86	4,499.1	52.2	29.9	-40.5	0.26	0.24	20.61
4,525.8	0.30	27.96	4,523.6	52.4	30.0	-40.6	0.11	-0.04	-20.00
4,550.4	0.31	33.14	4,548.1	52.5	30.0	-40.7	0.12	0.04	21.12
4,576.2	0.42	17.12	4,573.9	52.6	30.1	-40.8	0.58	0.43	-62.09



Scientific Drilling International
Survey Report



Company:	Antero Resources	Local Co-ordinate Reference:	Well Tabor Unit 1H
Project:	Tyler County WV	TVD Reference:	Precision 525: 1188' GL + 19' KB @ 1207.0usft
Site:	Coastal 2 Pad: Banner/Prudence/Tabor	MD Reference:	Precision 525: 1188' GL + 19' KB @ 1207.0usft
Well:	Tabor Unit 1H	North Reference:	Grid
Wellbore:	Original Wellpath	Survey Calculation Method:	Minimum Curvature
Design:	As Drilled	Database:	Antero NE

Survey										
Measured Depth (usft)	Inclination (°)	Azimuth (°)	Vertical Depth (usft)	+N/-S (usft)	+E/-W (usft)	Vertical Section (usft)	Dogleg Rate (°/100usft)	Build Rate (°/100usft)	Turn Rate (°/100usft)	
4,600.9	0.40	42.89	4,598.6	52.8	30.2	-40.9	0.74	-0.08	104.37	
4,625.3	0.37	46.91	4,623.0	52.9	30.3	-41.0	0.17	-0.12	16.48	
4,651.1	0.45	43.86	4,648.8	53.0	30.4	-41.1	0.32	0.31	-11.41	
4,675.5	0.38	54.31	4,673.2	53.1	30.6	-41.1	0.42	-0.29	42.45	
4,701.3	0.42	55.08	4,699.0	53.2	30.7	-41.2	0.16	0.16	2.99	
4,725.7	0.51	52.02	4,723.5	53.3	30.9	-41.2	0.38	0.37	-12.51	
4,750.1	0.55	58.16	4,747.9	53.5	31.0	-41.3	0.28	0.16	25.15	
4,775.9	0.50	66.77	4,773.6	53.6	31.3	-41.3	0.36	-0.19	33.40	
4,800.4	0.50	57.84	4,798.1	53.7	31.4	-41.4	0.32	0.00	-36.45	
4,826.1	0.53	68.30	4,823.9	53.8	31.6	-41.4	0.38	0.12	40.67	
4,850.6	0.54	63.21	4,848.3	53.9	31.9	-41.4	0.20	0.04	-20.84	
4,875.3	0.50	67.97	4,873.0	54.0	32.1	-41.5	0.24	-0.16	19.23	
4,900.1	0.52	70.18	4,897.8	54.1	32.3	-41.5	0.11	0.08	8.93	
4,925.9	0.43	64.38	4,923.6	54.1	32.5	-41.5	0.39	-0.35	-22.45	
4,950.5	0.46	68.62	4,948.2	54.2	32.6	-41.5	0.18	0.12	17.21	
4,976.3	0.49	64.20	4,974.0	54.3	32.8	-41.5	0.18	0.12	-17.17	
5,000.8	0.50	76.51	4,998.5	54.4	33.0	-41.5	0.44	0.04	50.24	
5,025.4	0.49	64.01	5,023.1	54.4	33.2	-41.5	0.44	-0.04	-50.81	
5,051.2	0.50	75.63	5,048.9	54.5	33.4	-41.6	0.39	0.04	44.95	
5,075.7	0.50	71.62	5,073.4	54.6	33.6	-41.6	0.14	0.00	-16.36	
5,101.8	0.54	78.23	5,099.5	54.6	33.9	-41.5	0.28	0.15	25.39	
5,126.3	0.45	84.13	5,124.0	54.7	34.1	-41.5	0.42	-0.37	24.07	
5,151.1	0.49	77.39	5,148.8	54.7	34.3	-41.5	0.27	0.16	-27.10	
5,176.1	0.50	89.66	5,173.8	54.7	34.5	-41.4	0.43	0.04	49.12	
5,200.2	0.49	83.71	5,197.9	54.7	34.7	-41.4	0.22	-0.04	-24.66	
5,225.2	0.53	96.12	5,222.9	54.7	34.9	-41.3	0.47	0.16	49.80	
5,251.5	0.53	94.89	5,249.2	54.7	35.2	-41.2	0.04	0.00	-4.67	
5,275.8	0.51	95.46	5,273.5	54.7	35.4	-41.1	0.09	-0.08	2.35	
5,300.4	0.47	90.31	5,298.1	54.7	35.6	-41.1	0.24	-0.16	-20.88	
5,326.6	0.49	93.45	5,324.3	54.7	35.8	-41.0	0.13	0.08	12.02	
5,351.2	0.46	109.77	5,348.9	54.6	36.0	-40.9	0.56	-0.12	66.34	
5,375.5	0.46	97.64	5,373.2	54.6	36.2	-40.8	0.40	0.00	-49.88	
5,400.2	0.46	103.76	5,397.9	54.6	36.4	-40.7	0.20	0.00	24.78	
5,426.5	0.46	107.91	5,424.2	54.5	36.6	-40.6	0.13	0.00	15.80	
5,450.3	0.40	102.23	5,448.0	54.4	36.8	-40.5	0.31	-0.25	-23.80	
5,476.2	0.43	111.20	5,473.9	54.4	36.9	-40.4	0.28	0.12	34.63	
5,500.4	0.41	111.48	5,498.1	54.3	37.1	-40.2	0.08	-0.08	1.16	
5,526.0	0.45	111.85	5,523.7	54.3	37.3	-40.1	0.16	0.16	1.45	
5,550.6	0.39	102.17	5,548.3	54.2	37.5	-40.0	0.38	-0.24	-39.37	
5,576.5	0.45	117.46	5,574.2	54.1	37.6	-39.9	0.49	0.23	59.06	
5,600.4	0.39	108.05	5,598.1	54.1	37.8	-39.8	0.38	-0.25	-39.34	
5,626.4	0.42	125.25	5,624.1	54.0	38.0	-39.7	0.48	0.12	66.28	
5,650.6	0.34	107.41	5,648.3	53.9	38.1	-39.6	0.59	-0.33	-73.57	



Scientific Drilling International
Survey Report



Company:	Antero Resources	Local Co-ordinate Reference:	Well Tabor Unit 1H
Project:	Tyler County WV	TVD Reference:	Precision 525: 1188' GL + 19' KB @ 1207.0usft
Site:	Coastal 2 Pad: Banner/Prudence/Tabor	MD Reference:	Precision 525: 1188' GL + 19' KB @ 1207.0usft
Well:	Tabor Unit 1H	North Reference:	Grid
Wellbore:	Original Wellpath	Survey Calculation Method:	Minimum Curvature
Design:	As Drilled	Database:	Antero NE

Survey										
Measured Depth (usft)	Inclination (°)	Azimuth (°)	Vertical Depth (usft)	+N/-S (usft)	+E/-W (usft)	Vertical Section (usft)	Dogleg Rate (°/100usft)	Build Rate (°/100usft)	Turn Rate (°/100usft)	
5,676.3	0.37	112.00	5,674.0	53.9	38.3	-39.5	0.16	0.12	17.89	
5,700.6	0.36	112.59	5,698.3	53.8	38.4	-39.4	0.04	-0.04	2.42	
5,725.2	0.45	120.41	5,722.9	53.7	38.5	-39.2	0.43	0.37	31.80	
5,750.8	0.46	127.49	5,748.5	53.6	38.7	-39.1	0.22	0.04	27.60	
5,775.2	0.44	118.14	5,772.9	53.5	38.9	-38.9	0.31	-0.08	-36.37	
5,800.9	0.47	125.60	5,798.6	53.4	39.1	-38.8	0.26	0.12	29.06	
5,825.2	0.37	118.74	5,822.9	53.3	39.2	-38.6	0.46	-0.41	-28.21	
5,851.5	0.44	118.81	5,849.2	53.2	39.4	-38.5	0.27	0.27	0.27	
5,876.4	0.41	120.92	5,874.1	53.1	39.5	-38.4	0.14	-0.12	8.46	
5,901.0	0.50	126.58	5,898.7	53.0	39.7	-38.2	0.41	0.37	23.03	
5,925.1	0.43	122.32	5,922.8	52.9	39.8	-38.0	0.32	-0.29	-17.69	
5,951.4	0.45	136.98	5,949.1	52.8	40.0	-37.9	0.43	0.08	55.67	
5,975.7	0.46	130.34	5,973.4	52.6	40.1	-37.7	0.22	0.04	-27.20	
6,001.5	0.53	137.80	5,999.2	52.5	40.3	-37.5	0.37	0.27	28.94	
6,026.0	0.47	124.88	6,023.6	52.3	40.5	-37.3	0.52	-0.25	-52.89	
6,050.1	0.58	142.74	6,047.8	52.2	40.6	-37.1	0.81	0.48	73.92	
6,076.1	0.52	139.53	6,073.8	52.0	40.8	-36.9	0.26	-0.23	-12.33	
6,101.1	0.40	137.17	6,098.8	51.8	40.9	-36.7	0.49	-0.48	-9.45	
6,125.6	0.57	142.86	6,123.3	51.7	41.0	-36.5	0.72	0.70	23.26	
6,150.1	0.51	142.61	6,147.7	51.5	41.2	-36.3	0.25	-0.25	-1.02	
6,176.2	0.47	141.11	6,173.9	51.3	41.3	-36.1	0.16	-0.15	-5.73	
6,200.7	0.40	134.88	6,198.4	51.2	41.4	-35.9	0.34	-0.29	-25.44	
6,226.1	0.41	140.05	6,223.8	51.1	41.6	-35.8	0.15	0.04	20.32	
6,250.7	0.54	157.77	6,248.4	50.9	41.7	-35.6	0.79	0.53	72.06	
6,276.0	0.25	153.58	6,273.7	50.7	41.7	-35.4	1.15	-1.15	-16.56	
6,300.0	0.41	164.66	6,297.7	50.6	41.8	-35.3	0.70	0.68	48.25	
Last Gyro @ 6300 MD										
6,300.4	0.41	164.78	6,298.1	50.6	41.8	-35.3	0.70	0.68	28.03	
6,348.0	0.44	150.89	6,345.7	50.3	41.9	-34.9	0.22	0.05	-29.19	
First SDI MWD @ 6348 MD										
6,438.0	0.27	176.47	6,435.7	49.8	42.1	-34.4	0.25	-0.19	28.42	
6,527.0	0.40	179.89	6,524.7	49.2	42.1	-33.9	0.15	0.15	3.84	
6,572.0	4.12	219.58	6,569.6	47.8	41.1	-32.8	8.49	8.27	88.20	
6,617.0	9.95	216.16	6,614.3	43.4	37.7	-29.7	12.98	12.96	-7.60	
6,662.0	18.11	214.30	6,658.1	35.1	31.9	-23.6	13.72	13.69	-4.13	
6,684.0	18.75	213.71	6,679.1	29.7	28.2	-19.5	12.02	12.00	-2.69	
SCMR @ 6684 MD										
6,707.0	21.51	213.24	6,700.7	23.1	23.9	-14.6	12.02	12.00	-2.04	
6,751.0	26.52	210.49	6,740.8	7.8	14.5	-3.0	11.86	11.39	-6.25	
6,796.0	29.88	206.99	6,780.5	-10.8	4.3	11.6	8.32	7.47	-7.78	
6,841.0	36.09	203.68	6,818.2	-33.0	-6.1	29.5	14.36	13.80	-7.36	
6,873.0	39.99	201.39	6,843.4	-51.2	-13.7	44.5	12.94	12.17	-7.14	
MDLX @ 6873 MD										
6,886.0	41.58	200.57	6,853.3	-59.1	-16.7	51.1	12.94	12.26	-6.34	



Company:	Antero Resources	Local Co-ordinate Reference:	Well Tabor Unit 1H
Project:	Tyler County WV	TVD Reference:	Precision 525: 1168' GL + 19' KB @ 1207.0usft
Site:	Coastal 2 Pad; Banner/Prudence/Tabor	MD Reference:	Precision 525: 1168' GL + 19' KB @ 1207.0usft
Well:	Tabor Unit 1H	North Reference:	Grid
Wellbore:	Original Wellpath	Survey Calculation Method:	Minimum Curvature
Design:	As Drilled	Database:	Antero NE

Measured Depth (usft)	Inclination (°)	Azimuth (°)	Vertical Depth (usft)	+N/-S (usft)	+E/-W (usft)	Vertical Section (usft)	Dogleg Rate (°/100usft)	Build Rate (°/100usft)	Turn Rate (°/100usft)
6,931.0	47.59	184.99	6,885.3	-89.2	-26.3	76.7	15.93	13.36	-12.40
6,975.0	52.76	188.43	6,913.5	-122.2	-33.1	106.1	16.40	11.75	-14.91
7,020.0	56.13	184.11	6,939.7	-158.6	-37.0	139.5	10.82	7.49	-9.60
7,065.0	58.59	181.52	6,964.0	-196.4	-38.9	174.9	7.31	5.47	-5.76
7,091.0	60.28	180.45	6,977.2	-218.8	-39.3	196.1	7.40	6.50	-4.12
BRKT @ 7091 MD									
7,110.0	61.52	179.69	6,986.4	-235.4	-39.3	211.9	7.40	6.53	-4.00
7,149.0	63.64	177.16	7,004.4	-270.0	-38.3	245.1	7.91	5.42	-6.49
TLLY @ 7149 MD									
7,154.0	63.91	176.84	7,006.6	-274.5	-38.1	249.4	7.91	5.49	-6.36
7,199.0	67.13	173.72	7,025.2	-315.3	-34.7	289.3	9.54	7.16	-6.93
7,244.0	69.66	171.04	7,041.8	-356.8	-29.1	330.4	7.89	5.62	-5.96
7,289.0	71.87	168.80	7,056.6	-398.6	-21.7	372.5	6.80	4.91	-4.98
7,324.0	73.70	167.64	7,067.0	-431.3	-14.9	405.7	6.11	5.22	-3.32
MRCL_HOT @ 7324 MD									
7,334.0	74.22	167.31	7,069.8	-440.7	-12.8	415.3	6.11	5.23	-3.28
7,378.0	76.86	164.77	7,080.7	-492.0	-2.5	457.8	8.23	6.05	-5.77
7,423.0	78.83	163.93	7,090.2	-524.4	9.4	501.8	4.70	4.33	-1.87
7,468.0	80.77	162.45	7,098.2	-566.8	22.2	546.0	5.39	4.31	-3.29
7,513.0	86.47	159.97	7,103.2	-609.1	36.6	590.7	13.60	12.67	-5.51
7,540.0	88.56	159.74	7,104.3	-634.4	45.9	617.7	7.79	7.74	-0.85
7,585.0	89.60	160.62	7,105.1	-676.8	61.1	662.6	3.03	2.31	1.96
7,630.0	89.37	158.27	7,105.5	-718.9	76.9	707.6	5.25	-0.51	-5.22
7,719.0	89.57	161.74	7,108.3	-802.5	107.3	796.5	3.91	0.22	3.90
7,809.0	89.47	162.76	7,107.0	-888.2	134.8	866.5	1.14	-0.11	1.13
7,899.0	89.73	161.59	7,107.7	-973.9	162.3	978.5	1.33	0.29	-1.30
7,988.0	89.00	164.63	7,108.7	-1,059.0	188.2	1,065.5	3.51	-0.82	3.42
8,078.0	89.47	164.13	7,109.9	-1,145.7	212.4	1,155.4	0.76	0.52	-0.56
8,168.0	88.40	163.72	7,111.5	-1,232.2	237.3	1,245.3	1.27	-1.19	-0.46
8,257.0	88.63	163.69	7,113.8	-1,317.6	262.3	1,334.3	0.26	0.26	-0.03
8,347.0	89.54	166.00	7,115.3	-1,404.4	285.8	1,424.1	2.76	1.01	2.57
8,437.0	89.94	166.87	7,115.7	-1,491.9	306.9	1,513.9	1.06	0.44	0.97
8,526.0	89.34	163.31	7,116.2	-1,577.9	329.8	1,602.7	4.06	-0.67	-4.00
8,616.0	88.43	162.18	7,118.0	-1,663.8	356.5	1,692.7	1.61	-1.01	-1.26
8,706.0	89.78	158.67	7,119.4	-1,748.6	386.7	1,782.8	4.18	1.50	-3.90
8,795.0	89.41	158.95	7,120.0	-1,831.6	418.8	1,871.5	0.52	-0.42	0.31
8,885.0	91.00	158.21	7,119.7	-1,915.4	451.7	1,961.3	1.95	1.77	-0.62
8,974.0	91.34	157.08	7,117.9	-1,997.6	485.5	2,050.0	1.33	0.38	-1.27
9,064.0	90.27	159.11	7,116.6	-2,081.1	519.1	2,139.8	2.55	-1.19	2.26
9,154.0	90.23	160.65	7,116.2	-2,165.6	550.1	2,229.7	1.71	-0.04	1.71
9,243.0	90.84	164.07	7,115.4	-2,250.4	577.0	2,318.7	3.90	0.69	3.64
9,333.0	89.86	163.04	7,114.9	-2,336.7	602.5	2,408.7	1.58	-1.09	-1.14
9,423.0	90.00	161.77	7,115.0	-2,422.5	629.7	2,498.7	1.42	0.16	-1.41
9,512.0	89.06	161.36	7,115.7	-2,507.0	657.9	2,587.7	1.15	-1.06	-0.46



Scientific Drilling International
Survey Report



Company:	Antero Resources	Local Co-ordinate Reference:	Well Tabor Unit 1H
Project:	Tyler County WV	TVD Reference:	Precision 525: 1188' GL + 19' KB @ 1207.0usft
Site:	Coastal 2 Pad: Banner/Prudence/Tabor	MD Reference:	Precision 525: 1188' GL + 19' KB @ 1207.0usft
Well:	Tabor Unit 1H	North Reference:	Grid
Wellbore:	Original Wellpath	Survey Calculation Method:	Minimum Curvature
Design:	As Drilled	Database:	Antero NE

Measured Depth (usft)	Inclination (°)	Azimuth (°)	Vertical Depth (usft)	+N/-S (usft)	+E/-W (usft)	Vertical Section (usft)	Dogleg Rate (°/100usft)	Build Rate (°/100usft)	Turn Rate (°/100usft)
9,602.0	88.83	160.20	7,117.3	-2,591.9	687.5	2,677.6	1.31	-0.26	-1.29
9,692.0	89.20	160.61	7,118.9	-2,676.7	717.7	2,767.6	0.61	0.41	0.46
9,781.0	89.53	161.48	7,119.9	-2,760.9	746.6	2,856.6	1.05	0.37	0.98
9,871.0	90.24	164.43	7,120.1	-2,846.9	772.9	2,946.6	3.37	0.79	3.28
9,961.0	89.13	162.90	7,120.6	-2,933.3	798.3	3,036.5	2.10	-1.23	-1.70
10,050.0	89.84	162.62	7,121.4	-3,018.3	824.6	3,125.5	0.86	0.80	-0.31
10,140.0	89.60	162.39	7,121.8	-3,104.1	851.7	3,215.5	0.37	-0.27	-0.26
10,230.0	89.77	163.05	7,122.3	-3,190.0	878.4	3,305.5	0.76	0.19	0.73
10,319.0	89.43	163.79	7,122.9	-3,275.3	903.8	3,394.5	0.92	-0.38	0.83
10,409.0	88.90	165.08	7,124.2	-3,362.0	928.0	3,484.4	1.55	-0.59	1.43
10,499.0	88.39	160.47	7,126.4	-3,447.9	954.6	3,574.3	5.15	-0.57	-5.12
10,589.0	89.97	163.77	7,127.6	-3,533.6	982.2	3,664.3	4.06	1.76	3.67
10,678.0	90.30	163.03	7,127.4	-3,618.9	1,007.6	3,753.3	0.91	0.37	-0.83
10,768.0	89.40	161.20	7,127.7	-3,704.5	1,035.3	3,843.3	2.27	-1.00	-2.03
10,858.0	89.50	161.89	7,128.5	-3,789.9	1,063.8	3,933.2	0.77	0.11	0.77
10,947.0	90.17	162.38	7,128.8	-3,874.6	1,091.1	4,022.2	0.93	0.75	0.55
11,037.0	90.47	161.75	7,128.3	-3,960.2	1,118.8	4,112.2	0.78	0.33	-0.70
11,126.0	89.87	156.82	7,128.0	-4,043.4	1,150.3	4,201.1	5.58	-0.67	-5.54
11,216.0	91.01	162.19	7,127.3	-4,127.7	1,181.8	4,291.0	6.10	1.27	5.97
11,305.0	90.38	162.09	7,126.3	-4,212.4	1,209.1	4,380.0	0.72	-0.71	-0.11
11,395.0	89.37	161.05	7,126.4	-4,297.8	1,237.5	4,470.0	1.61	-1.12	-1.16
11,484.0	89.13	159.90	7,127.6	-4,381.7	1,267.2	4,558.9	1.32	-0.27	-1.29
11,574.0	90.07	161.08	7,128.2	-4,466.5	1,297.3	4,648.9	1.68	1.04	1.31
11,663.0	90.31	163.63	7,127.9	-4,551.3	1,324.3	4,737.9	2.88	0.27	2.87
11,753.0	90.67	164.83	7,127.2	-4,637.9	1,348.7	4,827.8	1.39	0.40	1.33
11,843.0	89.80	163.97	7,126.8	-4,724.6	1,372.9	4,917.7	1.36	-0.97	-0.96
11,932.0	90.07	162.31	7,126.9	-4,809.8	1,398.7	5,006.7	1.89	0.30	-1.87
12,022.0	90.34	160.85	7,126.6	-4,895.1	1,427.2	5,096.7	1.65	0.30	-1.62
12,111.0	90.44	161.43	7,126.0	-4,979.4	1,456.0	5,185.7	0.86	0.11	0.65
12,201.0	89.74	161.26	7,125.8	-5,064.6	1,484.7	5,275.7	0.80	-0.78	-0.19
12,290.0	88.73	161.21	7,127.0	-5,148.9	1,513.4	5,364.7	1.14	-1.13	-0.06
12,380.0	89.70	164.13	7,128.3	-5,234.8	1,540.2	5,454.6	3.42	1.08	3.24
12,469.0	89.97	164.38	7,128.5	-5,320.4	1,564.3	5,543.6	0.41	0.30	0.28
12,559.0	89.30	160.29	7,129.1	-5,406.2	1,591.6	5,633.6	4.80	-0.74	-4.54
12,648.0	89.16	158.60	7,130.3	-5,489.5	1,622.9	5,722.5	1.91	-0.16	-1.90
12,738.0	89.90	159.12	7,131.0	-5,573.4	1,655.3	5,812.3	1.00	0.82	0.58
12,828.0	89.30	158.04	7,131.7	-5,657.2	1,688.2	5,902.1	1.37	-0.67	-1.20
12,917.0	89.73	160.15	7,132.4	-5,740.4	1,719.9	5,991.0	2.42	0.48	2.37
13,007.0	89.60	162.33	7,132.9	-5,825.6	1,748.9	6,081.0	2.43	-0.14	2.42
13,096.0	89.50	164.86	7,133.6	-5,910.9	1,774.0	6,170.0	2.84	-0.11	2.84
13,186.0	86.45	163.24	7,135.2	-5,997.5	1,798.8	6,259.9	2.14	-1.17	-1.80
13,275.0	86.76	163.91	7,137.4	-6,082.8	1,823.9	6,348.8	0.83	0.35	0.75
13,365.0	86.72	163.47	7,139.4	-6,169.2	1,849.2	6,438.8	0.49	-0.04	-0.49
13,455.0	89.70	163.63	7,140.6	-6,255.5	1,874.7	6,528.7	1.10	1.09	0.18

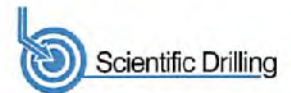


Scientific Drilling International
Survey Report



Company:	Antero Resources	Local Co-ordinate Reference:	Well Tabor Unit 1H
Project:	Tyler County WV	TVD Reference:	Precision 525: 1188' GL + 19' KB @ 1207.0usft
Site:	Coastal 2 Pad: Banner/Prudence/Tabor	MD Reference:	Precision 525: 1188' GL + 19' KB @ 1207.0usft
Well:	Tabor Unit 1H	North Reference:	Grid
Wellbore:	Original Wellpath	Survey Calculation Method:	Minimum Curvature
Design:	As Drilled	Database:	Antero NE

Measured Depth (usft)	Inclination (°)	Azimuth (°)	Vertical Depth (usft)	+N/-S (usft)	+E/-W (usft)	Vertical Section (usft)	Dogleg Rate (°/100usft)	Build Rate (°/100usft)	Turn Rate (°/100usft)
13,544.0	89.02	163.58	7,141.5	-6,340.8	1,899.8	5,517.7	0.77	-0.76	-0.06
13,634.0	89.02	162.46	7,143.2	-6,426.9	1,926.1	5,707.7	1.24	0.00	-1.24
13,724.0	89.06	162.58	7,144.7	-6,512.7	1,953.1	5,797.6	0.14	0.04	0.13
13,814.0	90.97	166.35	7,144.6	-6,599.4	1,977.2	5,887.5	4.70	2.12	4.19
13,903.0	90.13	165.17	7,143.8	-6,685.7	1,999.1	5,976.4	1.63	-0.94	-1.33
13,993.0	90.03	162.83	7,143.7	-6,772.2	2,023.9	7,066.3	2.60	-0.11	-2.60
14,083.0	89.13	161.26	7,144.3	-6,657.6	2,051.6	7,156.3	2.01	-1.00	-1.74
14,173.0	89.90	163.62	7,145.1	-6,943.6	2,078.8	7,246.3	2.76	0.86	2.62
14,262.0	89.39	165.39	7,145.6	-7,029.4	2,102.6	7,335.2	2.07	-0.57	1.99
14,352.0	89.53	165.26	7,146.5	-7,116.4	2,125.4	7,425.0	0.21	0.16	-0.14
14,442.0	87.85	160.09	7,148.5	-7,202.3	2,152.1	7,515.0	6.04	-1.87	-5.74
14,531.0	90.57	158.90	7,149.8	-7,285.6	2,183.3	7,603.9	3.34	3.06	-1.34
14,621.0	91.68	161.16	7,148.0	-7,370.2	2,214.0	7,693.8	2.80	1.23	2.51
14,711.0	90.74	160.90	7,146.1	-7,455.3	2,243.3	7,783.8	1.08	-1.04	-0.29
14,800.0	90.67	159.49	7,145.0	-7,539.0	2,273.4	7,872.7	1.58	-0.08	-1.58
14,890.0	90.47	158.63	7,144.1	-7,623.1	2,305.6	7,962.6	0.98	-0.22	-0.96
14,980.0	89.73	157.01	7,144.0	-7,706.4	2,339.6	8,052.3	1.98	-0.82	-1.80
15,070.0	90.06	156.53	7,144.1	-7,789.1	2,375.1	8,141.9	0.65	0.37	-0.53
15,159.0	90.90	159.38	7,143.4	-7,871.6	2,408.5	8,230.7	3.34	0.94	3.20
15,249.0	90.90	162.16	7,142.0	-7,956.5	2,438.1	8,320.7	3.09	0.00	3.09
15,339.0	91.03	163.41	7,140.4	-8,042.5	2,464.7	8,410.6	1.40	0.14	1.39
15,428.0	90.30	163.66	7,139.4	-8,127.8	2,490.0	8,499.6	0.87	-0.82	0.28
15,518.0	90.63	161.94	7,138.7	-8,213.8	2,516.6	8,589.6	1.95	0.37	-1.91
15,608.0	90.67	165.60	7,137.7	-8,300.2	2,541.7	8,679.5	4.07	0.04	4.07
15,698.0	89.63	166.33	7,137.4	-8,387.5	2,563.5	8,769.3	1.41	-1.16	0.81
15,787.0	89.02	165.27	7,138.5	-8,473.8	2,585.4	8,858.1	1.37	-0.69	-1.19
15,876.0	88.92	165.33	7,140.1	-8,559.9	2,608.0	8,947.0	0.13	-0.11	0.07
15,966.0	89.39	163.76	7,141.4	-8,646.6	2,631.9	9,035.9	1.82	0.52	-1.74
16,056.0	88.79	161.64	7,142.8	-8,732.5	2,658.7	9,125.8	2.45	-0.67	-2.36
16,145.0	90.06	162.64	7,143.7	-8,817.2	2,686.0	9,215.8	1.82	1.43	1.12
16,235.0	91.34	164.45	7,142.6	-8,903.5	2,711.5	9,305.8	2.46	1.42	2.01
16,325.0	89.02	159.88	7,142.3	-8,989.2	2,739.0	9,395.7	5.69	-2.58	-5.08
16,414.0	89.83	159.04	7,143.2	-9,072.5	2,770.3	9,484.7	1.31	0.91	-0.94
16,504.0	91.04	160.76	7,142.6	-9,157.0	2,801.2	9,574.6	2.34	1.34	1.91
16,593.0	90.33	158.90	7,141.5	-9,240.5	2,831.9	9,663.5	2.24	-0.80	-2.09
16,683.0	89.83	156.96	7,141.4	-9,323.9	2,865.7	9,753.3	2.23	-0.56	-2.16
16,772.0	90.33	158.16	7,141.2	-9,406.2	2,899.7	9,842.0	1.46	0.56	1.35
16,862.0	89.49	158.20	7,141.4	-9,489.7	2,933.1	9,931.8	0.93	-0.93	0.04
16,951.0	90.23	160.52	7,141.6	-9,573.0	2,964.5	10,020.7	2.74	0.83	2.61
17,041.0	90.60	161.76	7,140.9	-9,658.2	2,993.6	10,110.7	1.44	0.41	1.38
17,130.0	90.27	159.72	7,140.3	-9,742.2	3,022.9	10,199.6	2.32	-0.37	-2.29
17,220.0	89.96	158.88	7,140.1	-9,826.4	3,054.7	10,289.5	0.99	-0.34	-0.93
17,309.0	90.44	160.90	7,139.8	-9,910.0	3,085.3	10,378.5	2.33	0.54	2.27



Company:	Antero Resources	Local Co-ordinate Reference:	Well Tabor Unit 1H
Project:	Tyler County WV	TVD Reference:	Precision 525: 1188' GL + 19' KB @ 1207.0usft
Site:	Coastal 2 Pad: Banner/Prudence/Tabor	MD Reference:	Precision 525: 1188' GL + 19' KB @ 1207.0usft
Well:	Tabor Unit 1H	North Reference:	Grid
Wellbore:	Original Wellpath	Survey Calculation Method:	Minimum Curvature
Design:	As Drilled	Database:	Antero NE

Measured Depth (usft)	Inclination (°)	Azimuth (°)	Vertical Depth (usft)	+N/-S (usft)	+E/-W (usft)	Vertical Section (usft)	Dogleg Rate (°/100usft)	Build Rate (°/100usft)	Turn Rate (°/100usft)
17,399.0	91.11	165.50	7,138.6	-9,996.1	3,111.3	10,468.4	5.16	0.74	5.11
17,488.0	90.33	167.03	7,137.4	-10,082.5	3,132.5	10,557.2	1.93	-0.88	1.72
17,578.0	90.37	167.10	7,136.9	-10,170.2	3,152.6	10,646.8	0.09	0.04	0.08
17,667.0	89.53	165.23	7,137.0	-10,256.7	3,173.9	10,735.6	2.30	-0.94	-2.10
17,757.0	88.86	164.22	7,138.2	-10,343.5	3,197.6	10,825.5	1.35	-0.74	-1.12
17,834.0	89.66	163.34	7,139.2	-10,417.4	3,219.1	10,902.4	1.54	1.04	-1.14
Last SDI MWD @ 17834 MD									
17,899.0	89.66	163.34	7,139.6	-10,479.7	3,237.7	10,967.4	0.00	0.00	0.00
Projection To Bit @ 17899 MD									

Measured Depth (usft)	Vertical Depth (usft)	Name	Lithology	Dip (°)	Dip Direction (°)
6,684.0	6,679.1	SCMR @ 6684 MD		0.00	
6,873.0	6,843.4	MDLX @ 6873 MD		0.00	
7,091.0	6,977.2	BRKT @ 7091 MD		0.00	
7,149.0	7,004.4	TLLY @ 7149 MD		0.00	
7,324.0	7,067.0	MRCL_HOT @ 7324 MD		0.00	

Measured Depth (usft)	Vertical Depth (usft)	Local Coordinates		Comment
		+N/-S (usft)	+E/-W (usft)	
100.0	100.0	-0.1	-0.2	First Gyro @ 100 MD
6,300.0	6,297.7	50.6	41.8	Last Gyro @ 6300 MD
6,348.0	6,345.7	50.3	41.9	First SDI MWD @ 6348 MD
17,834.0	7,139.2	-10,417.4	3,219.1	Last SDI MWD @ 17834 MD
17,899.0	7,139.6	-10,479.7	3,237.7	Projection To Bit @ 17899 MD

Checked By: _____ Approved By: _____ Date: _____

OFFICE OF OIL AND GAS JUL 28 2015