

State of West Virginia
Department of Environmental Protection - Office of Oil and Gas
Well Operator's Report of Well Work

API 47-095-02172 County Tyler District Ellsworth
Quad Shirley 7.5' Pad Name Weigle East Pad Field/Pool Name -----
Farm name Edwin C. Weigle Well Number Scardina Unit 2H
Operator (as registered with the OOG) Antero Resources Corporation
Address 1615 Wynkoop Street City Denver State CO Zip 80202

As Drilled location NAD 83/UTM Attach an as-drilled plat, profile view, and deviation survey
Top hole Northing 4,368,524m Easting 512,679m
Landing Point of Curve Northing 4,368,554.35m Easting 512,791.65m
Bottom Hole Northing 4,365,452m Easting 513,964m

Elevation (ft) 817' GL Type of Well New Existing Type of Report Interim Final
Permit Type Deviated Horizontal Horizontal 6A Vertical Depth Type Deep Shallow
Type of Operation Convert Deepen Drill Plug Back Redrilling Rework Stimulate
Well Type Brine Disposal CBM Gas Oil Secondary Recovery Solution Mining Storage Other _____
Type of Completion Single Multiple Fluids Produced Brine Gas NGL Oil Other _____
Drilled with Cable Rotary

Drilling Media Surface hole Air Mud Fresh Water Intermediate hole Air Mud Fresh Water Brine
Production hole Air Mud Fresh Water Brine
Mud Type(s) and Additive(s)
Air- Foam & 4% KCL
Mud- Polymer

Date permit issued 4/25/2014 Date drilling commenced 12/1/2014 Date drilling ceased 4/12/2015
Date completion activities began 7/3/2015 Date completion activities ceased 4/17/2016
Verbal plugging (Y/N) N/A Date permission granted N/A Granted by N/A

Please note: Operator is required to submit a plugging application within 5 days of verbal permission to plug

Freshwater depth(s) ft 194', 366' Open mine(s) (Y/N) depths _____
Salt water depth(s) ft 842', 1027', 1199' Void(s) encountered (Y/N) depths JUL 10 2016
Coal depth(s) ft None Cavern(s) encountered (Y/N) depths None
Is coal being mined in area (Y/N) No

RECEIVED
Office of Oil and Gas
No
JUL 10 2016
WV Department of
Environmental Protection
Reviewed by:

APPROVED

NAME: [Signature]

DATE: 9/18/16

10/28/2016

API 47-095 - 02172 Farm name Edwin C. Weigle Well number Scardina Unit 2H

CASING STRINGS	Hole Size	Casing Size	Depth	New or Used	Grade wt/ft	Basket Depth(s)	Did cement circulate (Y/N) * Provide details below*
Conductor	30"	20"	60'	New	94#; H-40	N/A	Yes
Surface	17 1/2"	13 3/8"	503'	New	48#; H-40	N/A	Yes
Coal							
Intermediate 1	12 1/4"	9 5/8"	2480'	New	36#; J-55	N/A	Yes
Intermediate 2							
Intermediate 3							
Production	8 3/4" & 8 1/2"	5 1/2"	17,273'	New	23#; P-110	N/A	Yes
Tubing		2 3/8"	6491'		4.70#N-80		
Packer type and depth set		N/A					

Comment Details _____

CEMENT DATA	Class/Type of Cement	Number of Sacks	Slurry wt (ppg)	Yield (ft ³ /sks)	Volume (ft ³)	Cement Top (MD)	WOC (hrs)
Conductor	Class A	213 sx	15.6	1.18	58 Cu. Ft.	0'	8 Hrs.
Surface	Class A	600 sx	15.6	1.18	349 Cu. Ft.	0'	8 Hrs.
Coal							
Intermediate 1	Class A	974 sx	15.6	1.18	777 Cu. Ft.	0'	8 Hrs.
Intermediate 2							
Intermediate 3							
Production	Class H	796 sx (Lead); 1768 sx (Tail)	13.5 (Lead); 15.2 (Tail)	1.44 (Lead); 1.81 (Tail)	3504 Cu. Ft.	-500' into Intermediate Casing	8 Hrs.
Tubing							

Drillers TD (ft) 17,275' MD, 6408' TVD (BHL), 6416' TVD (Deepest Point Drilled) Loggers TD (ft) 17,226'
 Deepest formation penetrated Marcellus Shale Plug back to (ft) N/A
 Plug back procedure N/A

Kick off depth (ft) 5621'

Check all wireline logs run caliper density deviated/directional induction
 neutron resistivity gamma ray temperature

Well cored Yes No Conventional Sidewall Were cuttings collected Yes No

DESCRIBE THE CENTRALIZER PLACEMENT USED FOR EACH CASING STRING _____
 Conductor- 0
 Surface- 1 above guide shoe, 1 above insert float, 1 every 4th joint to surface
 Intermediate- 1 above float joint, 1 above float collar, 1 every 4th joint to surface
 Production- 1 above float joint, 1 below float collar, 1 every 3rd joint to top of cement

WAS WELL COMPLETED AS SHOT HOLE Yes No DETAILS N/A - WOC

WAS WELL COMPLETED OPEN HOLE? Yes No DETAILS N/A - WOC

WERE TRACERS USED Yes No TYPE OF TRACER(S) USED N/A - WOC

** This is a subsequent well. Antero only runs wireline logs on one well on a multi-well pad (Scardina Unit 1H API# 47-095-02169). Please reference the wireline logs submitted with Form WR-35 for the Scardina Unit 1H. A Cement Bond Log has been included with this submittal.

RECEIVED
Office of Oil and Gas
JUL 12 2016
WV Department of Environmental Protection

API 47-095-02172 Farm Name Edwin C. Weigle Well Number Scardina Unit 2H					
EXHIBIT 1					
Stage No.	Perforation Date	Perforated from MD ft.	Perforated to MD ft.	Number of Perforations	Formations
1	3-Jul-15	17,013	17,181	60	Marcellus
2	19-Jan-16	16,865	16,990	60	Marcellus
3	19-Jan-16	16,716	16,842	60	Marcellus
4	20-Jan-16	16,568	16,694	60	Marcellus
5	20-Jan-16	16,420	16,545	60	Marcellus
6	26-Jan-16	16,272	16,397	60	Marcellus
7	26-Jan-16	16,124	16,249	60	Marcellus
8	26-Jan-16	15,975	16,101	60	Marcellus
9	27-Jan-16	15,827	15,953	60	Marcellus
10	27-Jan-16	15,679	15,804	60	Marcellus
11	27-Jan-16	15,531	15,656	60	Marcellus
12	27-Jan-16	15,383	15,508	60	Marcellus
13	27-Jan-16	15,234	15,360	60	Marcellus
14	29-Jan-16	15,086	15,212	60	Marcellus
15	30-Jan-16	14,938	15,063	60	Marcellus
16	30-Jan-16	14,790	14,915	60	Marcellus
17	30-Jan-16	14,642	14,767	60	Marcellus
18	30-Jan-16	14,493	14,619	60	Marcellus
19	30-Jan-16	14,345	14,471	60	Marcellus
20	31-Jan-16	14,197	14,322	60	Marcellus
21	31-Jan-16	14,049	14,174	60	Marcellus
22	31-Jan-16	13,901	14,026	60	Marcellus
23	31-Jan-16	13,752	13,878	60	Marcellus
24	31-Jan-16	13,604	13,730	60	Marcellus
25	1-Feb-16	13,456	13,581	60	Marcellus
26	1-Feb-16	13,308	13,433	60	Marcellus
27	1-Feb-16	13,160	13,285	60	Marcellus
28	1-Feb-16	13,011	13,137	60	Marcellus
29	1-Feb-16	12,863	12,989	60	Marcellus
30	2-Feb-16	12,715	12,840	60	Marcellus
31	2-Feb-16	12,567	12,692	60	Marcellus
32	2-Feb-16	12,419	12,544	60	Marcellus
33	2-Feb-16	12,270	12,396	60	Marcellus
34	2-Feb-16	12,122	12,248	60	Marcellus
35	3-Feb-16	11,974	12,099	60	Marcellus
36	3-Feb-16	11,826	11,951	60	Marcellus
37	3-Feb-16	11,678	11,803	60	Marcellus
38	3-Feb-16	11,529	11,655	60	Marcellus
39	3-Feb-16	11,381	11,507	60	Marcellus
40	4-Feb-16	11,233	11,358	60	Marcellus
41	4-Feb-16	11,085	11,210	60	Marcellus
42	4-Feb-16	10,937	11,062	60	Marcellus
43	4-Feb-16	10,788	10,914	60	Marcellus
44	4-Feb-16	10,640	10,766	60	Marcellus
45	5-Feb-16	10,492	10,617	60	Marcellus
46	5-Feb-16	10,344	10,469	60	Marcellus
47	5-Feb-16	10,196	10,321	60	Marcellus
48	5-Feb-16	10,047	10,173	60	Marcellus
49	5-Feb-16	9,899	10,025	60	Marcellus
50	5-Feb-16	9,751	9,876	60	Marcellus
51	6-Feb-16	9,603	9,728	60	Marcellus
52	6-Feb-16	9,455	9,580	60	Marcellus
53	6-Feb-16	9,306	9,432	60	Marcellus
54	6-Feb-16	9,158	9,284	60	Marcellus
55	6-Feb-16	9,010	9,135	60	Marcellus
56	7-Feb-16	8,862	8,987	60	Marcellus
57	7-Feb-16	8,714	8,839	60	Marcellus
58	7-Feb-16	8,565	8,691	60	Marcellus
59	7-Feb-16	8,417	8,543	60	Marcellus
60	7-Feb-16	8,269	8,394	60	Marcellus
61	7-Feb-16	8,121	8,246	60	Marcellus
62	8-Feb-16	7,973	8,098	60	Marcellus
63	8-Feb-16	7,824	7,950	60	Marcellus
64	8-Feb-16	7,676	7,802	60	Marcellus
65	8-Feb-16	7,528	7,653	60	Marcellus
66	8-Feb-16	7,380	7,505	60	Marcellus
67	8-Feb-16	7,232	7,357	60	Marcellus
68	9-Feb-16	7,083	7,209	60	Marcellus
69	9-Feb-16	6,935	7,061	60	Marcellus
70	9-Feb-16	6,787	6,912	60	Marcellus
71	9-Feb-16	6,639	6,764	60	Marcellus

RECEIVED
Office of Oil and Gas
JUL 12 2016
WV Department of
Environmental Protection
10/28/2016

EXHIBIT 2

Stage No.	Stimulations Date	Avg Pump Rate	Avg Treatment Pressure (PSI)	Max Breakdown Pressure (PSI)	ISIP (PSI)	Amount of Proppant (lbs)	Amount of Water (bbls)	Amount of Nitrogen/ other (units)
1	19-Jan-16	63.8	7,826	N/A	4,283	211150	6294	N/A
2	19-Jan-16	68.9	7,391	5,781	4,517	224160	6018	N/A
3	19-Jan-16	67.7	7,373	5,536	4,857	192000	6188	N/A
4	20-Jan-16	70.7	7,492	5,804	4,878	222895	5895	N/A
5	20-Jan-16	69.3	7,423	5,564	4,592	220240	6731	N/A
6	26-Jan-16	68.6	7,432	5,604	5,150	222560	5906	N/A
7	26-Jan-16	68.5	7,391	5,668	4,731	191920	5550	N/A
8	26-Jan-16	71.1	7,363	5,455	5,128	221400	5960	N/A
9	27-Jan-16	72.4	7,192	5,407	5,364	183400	6383	N/A
10	27-Jan-16	68.7	7,348	5,883	5,261	215700	5726	N/A
11	27-Jan-16	71.2	7,492	5,507	4,706	210460	5822	N/A
12	27-Jan-16	70.6	7,514	5,955	4,617	182100	5790	N/A
13	27-Jan-16	69.1	7,526	5,844	4,971	206500	6294	N/A
14	29-Jan-16	71.6	7,416	5,504	5,507	201600	5753	N/A
15	30-Jan-16	78.3	7,256	5,229	5,111	221600	5840	N/A
16	30-Jan-16	72.1	7,111	5,400	5,271	223200	5774	N/A
17	30-Jan-16	72.2	7,057	5,343	4,785	222760	5777	N/A
18	30-Jan-16	71.9	7,174	5,482	5,153	223000	5762	N/A
19	30-Jan-16	75.3	7,243	5,232	4,972	222500	5770	N/A
20	31-Jan-16	73.0	7,133	5,257	5,175	204300	6111	N/A
21	31-Jan-16	73.1	6,936	5,193	5,246	223560	5731	N/A
22	31-Jan-16	72.6	7,030	5,261	4,803	223200	5700	N/A
23	31-Jan-16	72.8	7,144	5,329	4,796	195780	5929	N/A
24	31-Jan-16	72.0	6,997	5,225	5,039	222600	5684	N/A
25	1-Feb-16	72.3	6,909	5,321	4,846	221800	5670	N/A
26	1-Feb-16	72.5	6,848	5,304	4,925	222700	5775	N/A
27	1-Feb-16	72.7	7,069	5,282	4,796	218700	5605	N/A
28	1-Feb-16	73.0	7,134	5,304	4,921	222900	5638	N/A
29	1-Feb-16	73.1	7,017	5,418	4,922	223175	5649	N/A
30	2-Feb-16	72.8	6,885	5,314	4,578	222930	5633	N/A
31	2-Feb-16	71.7	7,150	5,261	4,270	223270	6016	N/A
32	2-Feb-16	69.2	7,231	5,447	5,025	220200	6166	N/A
33	2-Feb-16	70.3	7,091	5,314	4,967	223600	5600	N/A
34	2-Feb-16	73.8	7,234	5,308	4,846	223600	5591	N/A
35	3-Feb-16	73.7	7,087	5,213	4,828	223210	5589	N/A
36	3-Feb-16	72.3	7,138	5,314	5,454	223385	5572	N/A
37	3-Feb-16	70.1	7,064	5,400	4,867	223900	5582	N/A
38	3-Feb-16	70.0	7,130	5,490	4,689	224900	5577	N/A
39	3-Feb-16	74.5	7,255	5,786	4,681	223635	5549	N/A
40	4-Feb-16	73.8	7,158	5,801	4,896	223480	5532	N/A
41	4-Feb-16	75.4	6,955	5,385	4,907	222770	5522	N/A
42	4-Feb-16	73.7	6,935	5,275	5,461	225100	5542	N/A
43	4-Feb-16	71.9	6,758	5,289	5,382	223380	5534	N/A
44	4-Feb-16	72.7	6,933	5,607	4,988	223110	5490	N/A
45	4-Feb-16	73.6	7,041	5,572	4,807	223135	5483	N/A
46	5-Feb-16	68.4	7,484	5,722	4,495	182355	6264	N/A
47	5-Feb-16	68.8	7,201	5,386	5,275	98700	6011	N/A
48	5-Feb-16	71.4	6,919	5,264	4,710	223180	5523	N/A
49	5-Feb-16	72.6	7,102	5,414	4,789	222945	5998	N/A
50	5-Feb-16	74.5	6,983	5,401	4,914	223200	5437	N/A
51	6-Feb-16	74.0	6,991	5,371	5,016	223100	5424	N/A
52	6-Feb-16	71.5	6,814	5,479	5,300	223230	5448	N/A
53	6-Feb-16	71.9	6,708	5,339	5,808	223700	5439	N/A
54	6-Feb-16	71.6	6,760	5,304	4,885	223460	5413	N/A
55	6-Feb-16	74.0	6,961	5,501	4,817	223120	5385	N/A
56	7-Feb-16	73.5	6,951	5,528	5,005	223150	5375	N/A
57	7-Feb-16	73.0	6,801	5,462	5,025	224270	5372	N/A
58	7-Feb-16	72.5	6,578	5,608	5,050	224400	5455	N/A
59	7-Feb-16	72.8	6,655	5,393	5,103	222500	5356	N/A
60	7-Feb-16	72.8	6,593	5,533	4,478	223390	5342	N/A
61	7-Feb-16	74.9	6,647	5,463	4,358	223175	5336	N/A
62	8-Feb-16	74.8	6,678	5,603	4,727	223085	5321	N/A
63	8-Feb-16	72.7	6,697	5,541	4,857	213365	5246	N/A
64	8-Feb-16	72.0	6,523	5,654	5,393	221720	5323	N/A
65	8-Feb-16	70.7	6,832	5,751	4,967	222130	5373	N/A
66	8-Feb-16	71.1	6,333	5,608	5,389	223190	5293	N/A
67	8-Feb-16	74.5	6,818	5,401	4,975	217085	5282	N/A
68	9-Feb-16	74.4	6,528	5,736	4,911	223295	5274	N/A
69	9-Feb-16	73.8	6,521	5,314	5,214	179315	5259	N/A
70	9-Feb-16	72.2	6,459	5,579	5,597	223300	5365	N/A
71	9-Feb-16	72.2	6,380	5,840	5,197	223960	5296	N/A
AVG=		72.0	7,027	5,466	4,961	15,349,185	402,313	TOTAL

RECEIVED
Office of Oil and Gas
JUL 12 2016
WV Department of
Environmental Protection
10/28/2016

EXHIBIT 3

LITHOLOGY/ FORMATION	TOP DEPTH (TVD)	BOTTOM DEPTH (TVD)	TOP DEPTH (MD)	BOTTOM DEPTH (MD)
	From Surface	From Surface	From Surface	From Surface
Fresh Water	194	N/A	194	N/A
Fresh Water	366	N/A	366	N/A
Siltstone	0	227	0	227
Siltstone and Coal	est 227	275	est 227	275
Siltstone	est 275	411	est 275	411
Sandstone	est 411	542	est 411	542
Shale w/ Trace Coal	est 542	567	est 542	567
Shale w/ Trace Coal	est 567	767	est 567	767
Siltstone	est 767	807	est 767	807
Shale w/ Trace Coal	est 807	947	est 807	947
Siltstone	est 947	1,139	est 947	1,139
Sandstone	est 1139	1,201	est 1139	1,201
Siltstone	est 1201	1,237	est 1201	1,237
Sandstone	est 1237	1,317	est 1237	1,317
Siltstone	est 1317	1,725	est 1317	1,726
Big Lime	1,725	1,837	1,726	1,838
Big Injun	1,837	2,335	1,838	2,336
Gantz Sand	2,335	2,460	2,336	2,461
Fifty Foot Sandstone	2,460	2,549	2,461	2,550
Gordon	2,549	2,903	2,550	2,904
Fifth Sandstone	2,903	2,957	2,904	2,958
Bayard	2,957	3,311	2,958	3,312
Warren	3,311	3,714	3,312	3,715
Speechley	3,714	4,412	3,715	4,413
Bradford	4,412	4,830	4,413	4,831
Benson	4,830	5,069	4,831	5,070
Alexander	5,069	5,245	5,070	5,246
Elk	5,245	5,600	5,246	5,602
Rhinestreet	5,600	5,946	5,602	6,002
Sycamore	5,946	6,120	6,002	6,252
Middlesex	6,120	6,216	6,252	6,411
Burkett	6,216	6,244	6,411	6,467
Tully	6,244	6,288	6,467	6,596
Marcellus	6,288	NA	6,596	NA

*Please note Antero determines shallow formation tops based on mud logs that are only run on one well on a multi-well pad. The measured depth (MD) data on subsequent wells may be slightly different due to the well's unique departure.

RECEIVED
Office of Oil and Gas
JUL 12 2016
WV Department of
Environmental Protection
10/28/2016

Hydraulic Fracturing Fluid Product Component Information Disclosure

Job Start Date:	1/19/2016
Job End Date:	2/9/2016
State:	West Virginia
County:	Tyler
API Number:	47-095-02172-00-00
Operator Name:	Antero Resources Corporation
Well Name and Number:	Scardina 2H
Latitude:	39.46620130
Longitude:	-80.85260030
Datum:	NAD83
Federal Well:	NO
Indian Well:	NO
True Vertical Depth:	6,416
Total Base Water Volume (gal):	17,805,078
Total Base Non Water Volume:	0



Hydraulic Fracturing Fluid Composition:

Trade Name	Supplier	Purpose	Ingredients	Chemical Abstract Service Number (CAS #)	Maximum Ingredient Concentration in Additive (% by mass)**	Maximum Ingredient Concentration in HF Fluid (% by mass)**	Comments
Water	Antero Resources	Base Fluid	Water	7732-18-5	100.00000	90.19865	
Sand	U.S. Well Services, LLC	Proppant					
HCL Acid (12.6%-18.0%)	U.S. Well Services, LLC	Bulk Acid	Crystalline Silica, quartz	14808-60-7	100.00000	9.32342	
			Water	7732-18-5	87.50000	0.17270	
			Hydrogen Chloride	7647-01-0	18.00000	0.04125	
LGC-15	U.S. Well Services	Gelling Agents					
			Guar Gum	9000-30-0	50.00000	0.07213	
			Petroleum Distillates	64742-47-8	60.00000	0.06831	
			Suspending agent (solid)	14808-60-7	3.00000	0.01103	
			Surfactant	68439-51-0	3.00000	0.00433	
WERA-405	U.S. Well Services	Friction Reducer					
			Water	7732-18-5	60.00000	0.04105	
			2-Propenoic acid, polymer with propanamide	29003-06-9	30.00000	0.02052	
			Hydrated light distillate (petroleum)	64742-47-8	30.00000	0.01652	

SI-1100	J.S. Well Services	Scale Inhibitor	Ethoxylated alcohol blend	68002-97-1	4.00000	0.00274
			Water	7732-18-5	80.00000	0.01006
			Ethylene Glycol	107-21-1	25.00000	0.00355
			Copolymer of Maleic and Acrylic acid	52255-49-9	10.00000	0.00148
			Potassium salt of diethylene triamine penta (methylene phosphonic acid)	15827-60-8	7.50000	0.00127
			Hexamethylene tramine penta (methylene phosphonic acid)	34690-00-1	5.00000	0.00082
			Phosphino carboxylic acid polymer	71050-62-9	5.00000	0.00082
			Hexamethylene diamine penta (methylene phosphonic acid)	23605-74-5	2.00000	0.00033
K-BAC 1020	J.S. Well Services	Anti-Bacterial Agent	2,2-dibromo-3-nitropropanamide	10222-01-2	20.00000	0.00434
			Deionized Water	7732-18-5	28.00000	0.00248
AP One	J.S. Well Services	Gel Breakers	Ammonium Persulfate	7727-54-0	100.00000	0.00175
AI-302	J.S. Well Services	Acid Corrosion Inhibitors	Water	7732-18-5	95.00000	0.00038
			2-Propyn-1-ol compound with methylxirane	38172-91-7	15.00000	0.00006

Ingredients shown above are subject to 29 CFR 1910.120(b) and appear on Material Safety Data Sheets (MSDS). Ingredients shown below are Non-MSDS.

* Total Water Volume sources may include fresh water, produced water, and/or recycled water
 ** Information is based on the maximum potential for concentration and thus the total may be over 100%

Note: For Field Development Products (products that begin with FDP), MSDS level only information has been provided.
 Ingredient information for chemicals subject to 29 CFR 1910.120(b) and Appendix D are obtained from suppliers Material Safety Data Sheets (MSDS)

LATITUDE 39°30'00"

5,488'

1,290' TO BOTTOM HOLE

LATITUDE 39°27'30"

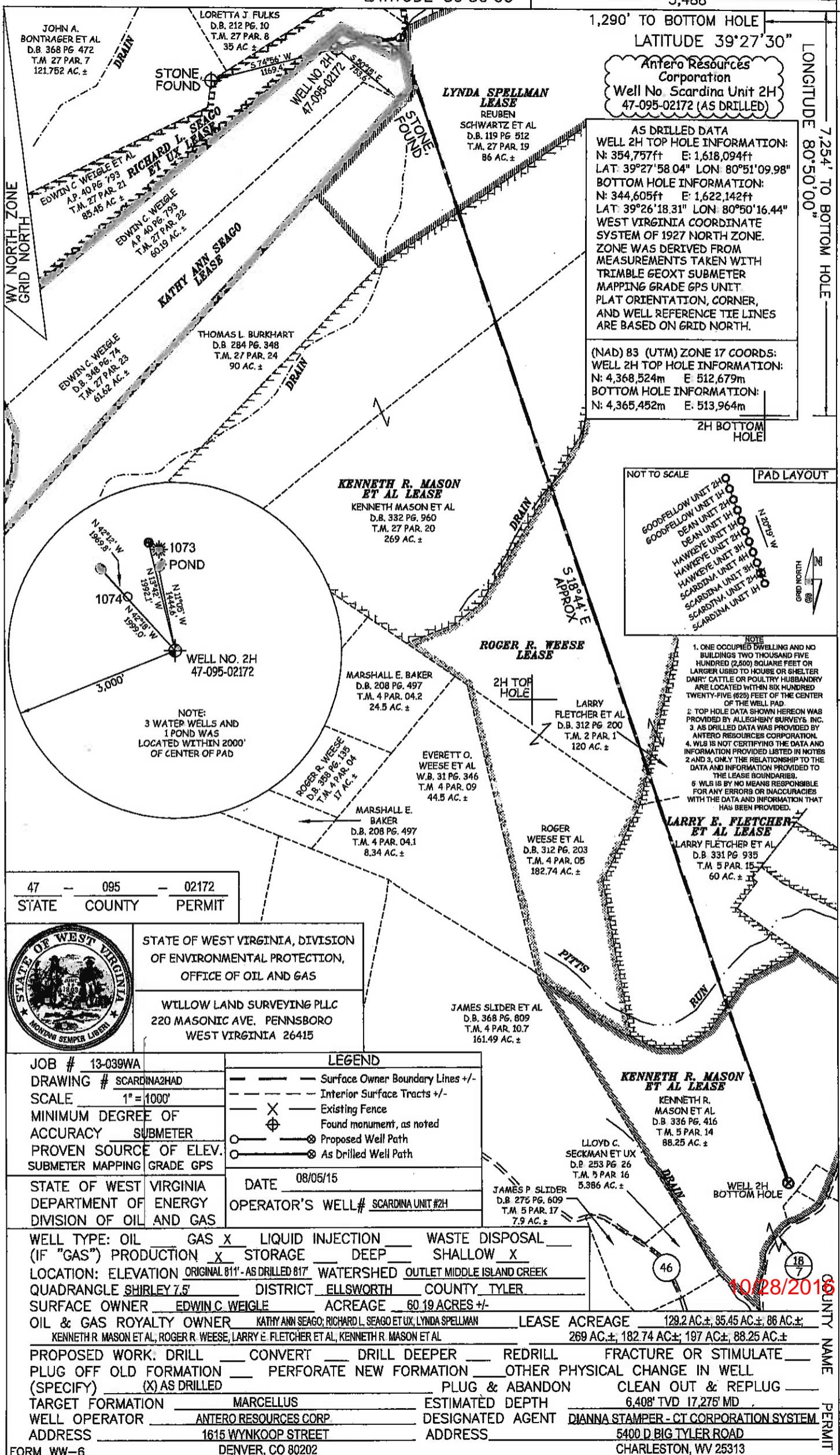
Antero Resources Corporation
Well No. Scardina Unit 2H
47-095-02172 (AS DRILLED)

LONGITUDE 80°50'00"

7,254' TO BOTTOM HOLE

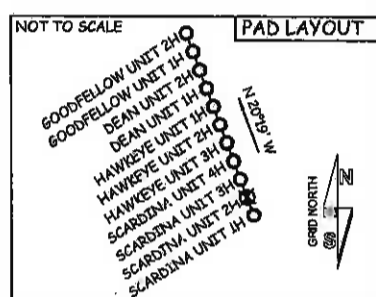
12,340'

LONGITUDE 80°50'00"



AS DRILLED DATA
WELL 2H TOP HOLE INFORMATION:
N: 354,757ft E: 1,618,094ft
LAT: 39°27'58.04" LON: 80°51'09.98"
BOTTOM HOLE INFORMATION:
N: 344,605ft E: 1,622,142ft
LAT: 39°26'18.31" LON: 80°50'16.44"
WEST VIRGINIA COORDINATE SYSTEM OF 1927 NORTH ZONE.
ZONE WAS DERIVED FROM MEASUREMENTS TAKEN WITH TRIMBLE GEOXT SUBMETER MAPPING GRADE GPS UNIT. PLAT ORIENTATION, CORNER, AND WELL REFERENCE TIE LINES ARE BASED ON GRID NORTH.

(NAD) 83 (UTM) ZONE 17 COORDS:
WELL 2H TOP HOLE INFORMATION:
N: 4,368,524m E: 512,679m
BOTTOM HOLE INFORMATION:
N: 4,365,452m E: 513,964m



- NOTE
- 1. ONE OCCUPIED DWELLING AND NO BUILDINGS TWO THOUSAND FIVE HUNDRED (2,500) SQUARE FEET OR LARGER USED TO HOUSE OR SHELTER DAIRY, CATTLE OR POULTRY HUSBANDRY ARE LOCATED WITHIN SIX HUNDRED TWENTY-FIVE (625) FEET OF THE CENTER OF THE PAD.
 - 2. TOP HOLE DATA SHOWN HEREON WAS PROVIDED BY ALLEGHENY SURVEY'S, INC.
 - 3. AS DRILLED DATA WAS PROVIDED BY ANTERO RESOURCES CORPORATION.
 - 4. WLS IS NOT CERTIFYING THE DATA AND INFORMATION PROVIDED LISTED IN NOTES 2 AND 3, ONLY THE RELATIONSHIP TO THE DATA AND INFORMATION PROVIDED TO THE LEASE BOUNDARIES.
 - 5. WLS IS BY NO MEANS RESPONSIBLE FOR ANY ERRORS OR INACCURACIES WITH THE DATA AND INFORMATION THAT HAS BEEN PROVIDED.

47 STATE 095 COUNTY 02172 PERMIT



STATE OF WEST VIRGINIA, DIVISION OF ENVIRONMENTAL PROTECTION, OFFICE OF OIL AND GAS

WILLOW LAND SURVEYING PLLC
220 MASONIC AVE. PENNSBORO WEST VIRGINIA 26415

JOB # 13-039WA
DRAWING # SCARDINA2HAD
SCALE 1" = 1000'
MINIMUM DEGREE OF ACCURACY SUBMETER
PROVEN SOURCE OF ELEV. SUBMETER MAPPING GRADE GPS
STATE OF WEST VIRGINIA DEPARTMENT OF ENERGY DIVISION OF OIL AND GAS

LEGEND	
---	Surface Owner Boundary Lines +/-
- - -	Interior Surface Tracts +/-
X	Existing Fence
⊕	Found monument, as noted
○	Proposed Well Path
○	As Drilled Well Path

DATE 08/05/15
OPERATOR'S WELL# SCARDINA UNIT #2H

WELL TYPE: OIL GAS LIQUID INJECTION WASTE DISPOSAL
(IF "GAS") PRODUCTION STORAGE DEEP SHALLOW
LOCATION: ELEVATION ORIGINAL 811' - AS DRILLED 817' WATERSHED OUTLET MIDDLE ISLAND CREEK
QUADRANGLE SHIRLEY 7.5 DISTRICT ELLSWORTH COUNTY TYLER
SURFACE OWNER EDWIN C. WEIGLE ACREAGE 60.19 ACRES +/-
OIL & GAS ROYALTY OWNER KATHY ANN SEAGO; RICHARD L. SEAGO ET UX, LYNDIA SPELLMAN LEASE ACREAGE 129.2 AC +/-, 85.45 AC +/-, 86 AC +/-
KENNETH R. MASON ET AL, ROGER R. WEESE, LARRY E. FLETCHER ET AL, KENNETH R. MASON ET AL 269 AC +/-, 182.74 AC +/-, 197 AC +/-, 88.25 AC +/-
PROPOSED WORK: DRILL CONVERT DRILL DEEPER REDRILL FRACTURE OR STIMULATE
PLUG OFF OLD FORMATION PERFORATE NEW FORMATION OTHER PHYSICAL CHANGE IN WELL (SPECIFY) (X) AS DRILLED PLUG & ABANDON CLEAN OUT & REPLUG
TARGET FORMATION MARCELLUS ESTIMATED DEPTH 6,408' TVD 17,275' MD
WELL OPERATOR ANTERO RESOURCES CORP DESIGNATED AGENT DIANNA STAMPER - CT CORPORATION SYSTEM
ADDRESS 1615 WYNKOOP STREET ADDRESS 5400 D BIG TYLER ROAD
FORM WW-6 DENVER, CO 80202 CHARLESTON, WV 25313

10/28/2016

COUNTY NAME PERMIT