

State of West Virginia
Department of Environmental Protection - Office of Oil and Gas
Well Operator's Report of Well Work

API 47 - 095 - 02182 County Tyler District Ellsworth
Quad Shirley 7.5' Pad Name Weigle East Pad Field/Pool Name -----
Farm name Edwin C. Weigle Well Number Hawkeye Unit 2H
Operator (as registered with the OOG) Antero Resources Corporation
Address 1615 Wynkoop Street City Denver State CO Zip 80202

As Drilled location NAD 83/UTM Attach an as-drilled plat, profile view, and deviation survey
Top hole Northing 4368535m Easting 512675m
Landing Point of Curve Northing 4368217.51m Easting 512333.28m
Bottom Hole Northing 4364905m Easting 513522m

Elevation (ft) 817' GL Type of Well New Existing Type of Report Interim Final
Permit Type Deviated Horizontal Horizontal 6A Vertical Depth Type Deep Shallow
Type of Operation Convert Deepen Drill Plug Back Redrilling Rework Stimulate
Well Type Brine Disposal CBM Gas Oil Secondary Recovery Solution Mining Storage Other _____
Type of Completion Single Multiple Fluids Produced Brine Gas NGL Oil Other _____
Drilled with Cable Rotary

Drilling Media Surface hole Air Mud Fresh Water Intermediate hole Air Mud Fresh Water Brine
Production hole Air Mud Fresh Water Brine

Mud Type(s) and Additive(s)
Air - Foam & 4% KCL
Mud - Polymer

Date permit issued 6/25/2014 Date drilling commenced 10/23/2014 Date drilling ceased 6/3/2015
Date completion activities began 7/2/2015 Date completion activities ceased 4/11/2016
Verbal plugging (Y/N) N/A Date permission granted N/A Granted by N/A

Please note: Operator is required to submit a plugging application within 5 days of verbal permission to plug

Freshwater depth(s) ft 194', 366' Open mine(s) (Y/N) depths -----
Salt water depth(s) ft 842', 1027', 1199' Void(s) encountered (Y/N) depths -----
Coal depth(s) ft None Identified Cavern(s) encountered (Y/N) depths -----
Is coal being mined in area (Y/N) N

Received
Office of Oil & Gas
JUN 2 11 2016

Reviewed by:
APPROVED
NAME: [Signature] 10/28/2016
DATE: 7/2/16

API 47-095 - 02182 Farm name Edwin C. Weigle Well number Hawkeye Unit 2H

CASING STRINGS	Hole Size	Casing Size	Depth	New or Used	Grade wt/ft	Basket Depth(s)	Did cement circulate (Y/ N) * Provide details below*
Conductor	30"	20"	60'	New	94#/J-55	N/A	Y
Surface	17-1/2"	13-3/8"	526'	New	48#/H-40	N/A	Y
Coal							
Intermediate 1	12-1/4"	9-5/8"	2530'	New	36#/J-55	N/A	Y
Intermediate 2							
Intermediate 3							
Production	8-3/4"/8-1/2"	5-1/2"	18,721'	New	23#/P-110	N/A	Y
Tubing		2-3/8"	6678'		4.7#/N-80		
Packer type and depth set		N/A					

Comment Details _____

CEMENT DATA	Class/Type of Cement	Number of Sacks	Slurry wt (ppg)	Yield (ft ³ /sks)	Volume (ft ³)	Cement Top (MD)	WOC (hrs)
Conductor	Class A	170 sx	15.6	1.18	58 Cu. Ft.	0'	8 Hrs.
Surface	Class A	622 sx	15.6	1.18	365 Cu. Ft.	0'	8 Hrs.
Coal							
Intermediate 1	Class A	977 sx	15.6	1.18	792 Cu. Ft.	0'	8 Hrs.
Intermediate 2							
Intermediate 3							
Production	Class H	1011 sx (Lead), 1866 sx (Tail)	14.2 (Lead), 14.8 (Tail)	1.24 (Lead), 1.81 (Tail)	3824 Cu. Ft.	-500' into Intermediate Casing	8 Hrs.
Tubing							

Drillers TD (ft) 18,721' MD, 6413' TVD (BHL) Loggers TD (ft) 18,672' MD
 Deepest formation penetrated Marcellus Plug back to (ft) N/A
 Plug back procedure N/A

Kick off depth (ft) 6146'

** This is a subsequent well. Antero only runs wireline logs on one well on a multi-well pad (Scardina Unit 1H API# 47-095-02169). Please reference the wireline logs submitted with Form WR-35 for the Scardina Unit 1H. A Cement Bond Log has been included with this submittal.

Check all wireline logs run caliper density deviated/directional induction neutron resistivity gamma ray temperature temperature

Well cored Yes No Conventional Sidewall Were cuttings collected Yes No

DESCRIBE THE CENTRALIZER PLACEMENT USED FOR EACH CASING STRING _____

Conductor - 0
 Surface - 1 above guide shoe, 1 above insert float, 1 every 4th joint to surface
 Intermediate - 1 above float joint, 1 above float collar, 1 every 4th joint to surface
 Production - 1 above float joint, 1 below float collar, 1 every 3rd joint to top of cement

WAS WELL COMPLETED AS SHOT HOLE Yes No DETAILS _____

WAS WELL COMPLETED OPEN HOLE? Yes No DETAILS _____

WERE TRACERS USED Yes No TYPE OF TRACER(S) USED N/A

Received
Office of Oil & Gas
JUN 21 2016

API 47-095-02182 Farm Name Edwin C. Weigle Well Number Hawkeye Unit 2H

EXHIBIT 1

Stage No.	Perforation Date	Perforated from MD ft.	Perforated to MD ft.	Number of Perforations	Formations
1	2-Jul-15	18,468	18,635	60	Marcellus
2	28-Nov-15	18,270	18,437	60	Marcellus
3	28-Nov-15	18,072	18,239	60	Marcellus
4	28-Nov-15	17,874	18,041	60	Marcellus
5	28-Nov-15	17,677	17,843	60	Marcellus
6	29-Nov-15	17,479	17,646	60	Marcellus
7	29-Nov-15	17,281	17,448	60	Marcellus
8	29-Nov-15	17,083	17,250	60	Marcellus
9	30-Nov-15	16,885	17,052	60	Marcellus
10	30-Nov-15	16,687	16,854	60	Marcellus
11	30-Nov-15	16,489	16,656	60	Marcellus
12	1-Dec-15	16,291	16,458	60	Marcellus
13	1-Dec-15	16,093	16,260	60	Marcellus
14	1-Dec-15	15,895	16,062	60	Marcellus
15	2-Dec-15	15,698	15,865	60	Marcellus
16	3-Dec-15	15,500	15,667	60	Marcellus
17	3-Dec-15	15,302	15,469	60	Marcellus
18	3-Dec-15	15,104	15,271	60	Marcellus
19	5-Dec-15	14,906	15,073	60	Marcellus
20	5-Dec-15	14,708	14,875	60	Marcellus
21	5-Dec-15	14,510	14,677	60	Marcellus
22	6-Dec-15	14,312	14,479	60	Marcellus
23	6-Dec-15	14,114	14,281	60	Marcellus
24	6-Dec-15	13,917	14,083	60	Marcellus
25	7-Dec-15	13,719	13,886	60	Marcellus
26	7-Dec-15	13,521	13,688	60	Marcellus
27	7-Dec-15	13,323	13,490	60	Marcellus
28	7-Dec-15	13,125	13,292	60	Marcellus
29	8-Dec-15	12,927	13,094	60	Marcellus
30	8-Dec-15	12,729	12,896	60	Marcellus
31	8-Dec-15	12,531	12,698	60	Marcellus
32	8-Dec-15	12,333	12,500	60	Marcellus
33	9-Dec-15	12,136	12,302	60	Marcellus
34	9-Dec-15	11,938	12,105	60	Marcellus
35	9-Dec-15	11,740	11,907	60	Marcellus
36	9-Dec-15	11,542	11,709	60	Marcellus
37	9-Dec-15	11,344	11,511	60	Marcellus
38	10-Dec-15	11,146	11,313	60	Marcellus
39	10-Dec-15	10,948	11,115	60	Marcellus
40	10-Dec-15	10,750	10,917	60	Marcellus
41	10-Dec-15	10,552	10,719	60	Marcellus
42	11-Dec-15	10,355	10,521	60	Marcellus
43	11-Dec-15	10,157	10,324	60	Marcellus
44	11-Dec-15	9,959	10,126	60	Marcellus
45	11-Dec-15	9,761	9,928	60	Marcellus
46	12-Dec-15	9,563	9,730	60	Marcellus
47	12-Dec-15	9,365	9,532	60	Marcellus
48	12-Dec-15	9,167	9,334	60	Marcellus
49	12-Dec-15	8,969	9,136	60	Marcellus
50	12-Dec-15	8,771	8,938	60	Marcellus
51	12-Dec-15	8,573	8,740	60	Marcellus
52	13-Dec-15	8,376	8,543	60	Marcellus
53	13-Dec-15	8,178	8,345	60	Marcellus
54	13-Dec-15	7,980	8,147	60	Marcellus
55	13-Dec-15	7,782	7,949	60	Marcellus
56	14-Dec-15	7,584	7,751	60	Marcellus
57	14-Dec-15	7,386	7,553	60	Marcellus
58	14-Dec-15	7,188	7,355	60	Marcellus
59	14-Dec-15	6,990	7,157	60	Marcellus
60	14-Dec-15	6,792	6,959	60	Marcellus

Received
Office of Oil & Gas
JUN 21 2016

10/28/2016

EXHIBIT 2

Stage No.	Stimulations Date	Avg Pump Rate	Avg Treatment Pressure (PSI)	Max Breakdown Pressure (PSI)	ISIP (PSI)	Amount of Proppant (lbs)	Amount of Water (bbls)	Amount of Nitrogen/ other (units)
1	27-Dec-15	69.7	7,613	N/A	4,714	245,000	8,525	N/A
2	28-Nov-15	71.6	7,702	5,911	4,688	272,740	8,373	N/A
3	28-Nov-15	66.9	7,387	6,595	4,796	226,100	7,569	N/A
4	28-Nov-15	65.8	7,397	5,690	4,921	244,900	7,573	N/A
5	28-Nov-15	70.5	7,627	5,525	4,774	293,300	7,971	N/A
6	29-Nov-15	72.0	7,589	5,304	4,878	277,300	7,589	N/A
7	29-Nov-15	66.2	7,429	5,329	4,442	258,500	7,331	N/A
8	29-Nov-15	73.9	7,722	5,350	4,642	266,180	8,112	N/A
9	30-Nov-15	72.7	7,759	5,314	4,649	300,260	7,815	N/A
10	30-Nov-15	68.3	7,388	5,274	4,206	261,950	7,264	N/A
11	30-Nov-15	73.9	7,589	5,296	4,878	300,820	7,655	N/A
12	1-Dec-15	73.8	7,520	5,811	5,143	300,460	7,646	N/A
13	1-Dec-15	74.1	7,397	5,601	4,167	238,750	7,939	N/A
14	1-Dec-15	74.5	7,692	5,600	4,452	292,140	7,502	N/A
15	2-Dec-15	72.6	7,359	5,361	4,428	300,530	7,922	N/A
16	3-Dec-15	75.6	7,555	6,216	4,352	301,935	7,588	N/A
17	3-Dec-15	74.8	7,483	6,033	4,513	298,900	7,540	N/A
18	3-Dec-15	67.2	6,989	5,397	5,114	225,320	8,041	N/A
19	5-Dec-15	70.8	7,316	5,404	4,034	300,985	7,577	N/A
20	5-Dec-15	73.1	7,436	5,500	5,029	298,160	7,493	N/A
21	5-Dec-15	71.0	7,222	5,490	4,674	274,120	8,245	N/A
22	6-Dec-15	72.6	7,319	5,203	4,836	271,255	8,252	N/A
23	6-Dec-15	74.8	7,481	5,513	4,406	299,975	7,528	N/A
24	6-Dec-15	75.0	7,408	5,407	4,478	299,920	7,517	N/A
25	7-Dec-15	72.5	7,359	5,372	4,824	300,960	7,512	N/A
26	7-Dec-15	74.0	7,248	5,671	4,331	300,920	7,467	N/A
27	7-Dec-15	73.8	7,283	5,508	4,192	300,325	7,508	N/A
28	7-Dec-15	70.8	7,229	5,643	4,824	281,800	8,112	N/A
29	8-Dec-15	70.7	7,037	5,897	5,236	301,300	7,449	N/A
30	8-Dec-15	72.0	7,321	5,497	4,326	300,180	7,439	N/A
31	8-Dec-15	72.4	7,244	5,468	4,653	267,605	7,315	N/A
32	8-Dec-15	69.7	7,021	5,439	4,982	301,900	7,434	N/A
33	9-Dec-15	70.2	7,120	5,600	4,860	268,800	8,073	N/A
34	9-Dec-15	72.8	7,188	5,411	4,406	299,975	7,373	N/A
35	9-Dec-15	72.5	7,160	5,473	4,859	300,315	7,351	N/A
36	9-Dec-15	70.3	6,875	5,472	5,107	300,400	7,354	N/A
37	9-Dec-15	71.3	6,933	5,711	4,789	300,400	7,352	N/A
38	10-Dec-15	70.5	6,982	5,543	5,007	300,900	7,347	N/A
39	10-Dec-15	72.9	7,092	5,541	4,574	299,485	7,302	N/A
40	10-Dec-15	72.9	7,086	5,472	4,496	297,610	7,245	N/A
41	10-Dec-15	70.1	6,897	5,790	5,057	285,900	7,972	N/A
42	11-Dec-15	70.5	6,947	5,493	4,481	277,445	7,978	N/A
43	11-Dec-15	72.4	7,158	5,365	4,109	287,965	7,081	N/A
44	11-Dec-15	68.7	7,162	6,037	4,030	218,920	6,964	N/A
45	11-Dec-15	70.4	6,881	6,126	4,703	276,200	7,564	N/A
46	12-Dec-15	72.0	7,019	5,668	4,327	301,900	7,232	N/A
47	12-Dec-15	72.8	6,614	5,528	4,457	300,005	7,206	N/A
48	12-Dec-15	72.7	6,717	5,622	4,116	300,255	7,190	N/A
49	12-Dec-15	73.4	6,681	5,706	4,603	274,805	6,840	N/A
50	12-Dec-15	70.4	6,427	5,518	4,703	301,000	7,185	N/A
51	12-Dec-15	70.3	6,522	5,397	4,824	282,100	7,837	N/A
52	13-Dec-15	73.7	6,521	5,568	4,657	299,725	7,119	N/A
53	13-Dec-15	72.7	6,599	5,869	4,613	286,960	6,987	N/A
54	13-Dec-15	72.2	6,676	5,797	4,964	255,330	7,299	N/A
55	13-Dec-15	70.2	6,348	5,525	4,698	286,300	7,806	N/A
56	14-Dec-15	71.5	6,419	6,437	4,506	286,300	7,762	N/A
57	14-Dec-15	71.4	6,255	6,244	4,975	300,300	7,071	N/A
58	14-Dec-15	71.8	6,278	5,965	5,136	301,100	7,070	N/A
59	14-Dec-15	71.8	6,303	5,286	4,492	301,100	7,061	N/A
60	14-Dec-15	70.9	6,308	5,950	3,930	300,400	7,047	N/A
AVG=		71.7	7,104	5,621	4,634	17,096,385	452,471	TOTAL

Office of Oil & Gas

JUN 21 2016

EXHIBIT 3

LITHOLOGY/ FORMATION	TOP DEPTH (TVD)	BOTTOM DEPTH (TVD)	TOP DEPTH (MD)	BOTTOM DEPTH (MD)
	From Surface	From Surface	From Surface	From Surface
Fresh Water	194	N/A	194	N/A
Fresh Water	366	N/A	366	N/A
Siltstone	0	227	0	227
Siltstone and Coal	227	275	227	275
Siltstone	275	411	275	411
Sandstone	411	542	411	542
Shale w. Trace Coal	542	567	542	567
Shale w. Trace Coal	567	767	567	767
Siltstone	767	807	767	807
Shale w. Trace Coal	807	947	807	947
Siltstone	947	1,139	947	1,139
Sandstone	1,139	1,201	1,139	1,201
Siltstone	1,201	1,237	1,201	1,237
Sandstone	1,237	1,317	1,237	1,317
Siltstone	1,317	1,720	1,317	1,722
Big Lime	1,720	1,820	1,722	1,822
Big Injun	1,820	2,326	1,822	2,328
Gantz Sand	2,326	2,462	2,328	2,464
Fifty Foot Sandstone	2,462	2,542	2,464	2,544
Gordon	2,542	2,903	2,544	2,905
Fifth Sandstone	2,903	2,957	2,905	2,959
Bayard	2,957	3,313	2,959	3,315
Warren	3,313	3,694	3,315	3,700
Speechley	3,694	4,409	3,700	4,456
Bradford	4,409	4,815	4,456	4,928
Benson	4,815	5,080	4,928	5,236
Alexander	5,080	5,255	5,236	5,436
Elk	5,255	5,622	5,436	5,857
Rhinestreet	5,622	5,932	5,857	6,212
Sycamore	5,932	6,104	6,212	6,431
Middlesex	6,104	6,198	6,431	6,579
Burkett	6,198	6,222	6,579	6,629
Tully	6,222	6,265	6,629	6,753
Marcellus	6,265	NA	6,753	NA

*Please note Antero determines shallow formation tops based on mud logs that are only run on one well on a multi-well pad. The measured depth (MD) data on subsequent wells may be slightly different due to the well's unique departure.

Received
Office of Oil & Gas
JUN 21 2016

10/28/2016

Hydraulic Fracturing Fluid Product Component Information Disclosure

Job Start Date:	11/27/2015
Job End Date:	12/14/2015
State:	West Virginia
County:	Tyler
API Number:	47-095-02182-00-00
Operator Name:	Antero Resources Corporation
Well Name and Number:	Hawkeye 2H
Longitude:	-80.85265300
Latitude:	39.46630300
Datum:	NAD83
Federal/Tribal Well:	NO
True Vertical Depth:	6,411
Total Base Water Volume (gal):	19,957,062
Total Base Non Water Volume:	6



Hydraulic Fracturing Fluid Composition:

Trade Name	Supplier	Purpose	Ingredients	Chemical Service Abstract Number (CAS #)	Maximum Ingredient Concentration in Additive (% by mass)**	Maximum Ingredient Concentration in HF Fluid (% by mass)**	Comments
Water	Antero Resources	Base Fluid	Water	7732-18-5	100.00000	90.39160	
Sand	U.S. Well Services, LLC	Proppant	Crystalline Silica, quartz	14808-60-7	100.00000	9.28474	
LGC-15	U.S. Well Services	Gelling Agents	Guar Gum	9000-30-0	50.00000	0.06415	
			Petroleum Distillates	64742-47-8	60.00000	0.06076	
			Suspending agent (solid)	14808-60-7	3.00000	0.00981	
			Surfactant	68439-51-0	3.00000	0.00385	
HCL Acid (12.6%-18.0%)	U.S. Well Services, LLC	Bulk Acid	Water	7732-18-5	87.50000	0.06700	
			Hydrogen Chloride	7647-01-0	18.00000	0.01600	
WFRA-405	U.S. Well Services	Friction Reducer	Water	7732-18-5	60.00000	0.03842	
			2-Propenoic acid, polymer with 2-propanamide	29093-06-9	30.00000	0.01921	
			Hydrated light distillate (petroleum)	64742-47-8	30.00000	0.01546	
			Ethoxylated alcohol blend	68002-97-1	4.00000	0.00256	

SI-1100	U.S. Well Services	Scale Inhibitor						
			Water	7732-18-5		80.00000	0.01001	
			Ethylene Glycol	107-21-1		25.00000	0.00353	
			Copolymer of Maleic and Acrylic acid	62255-49-9		10.00000	0.00148	
			Potassium salt of diethylene triamine penta (methylene phosphonic acid)	15827-60-8		7.50000	0.00127	
			Hexamethylene tramine penta (methylene phosphonic acid)	34690-00-1		5.00000	0.00081	
			Phosphino carboxylic acid polymer	71050-62-9		5.00000	0.00081	
			Hexamethylene diamine penta (methylene phosphonic acid)	23605-74-5		2.00000	0.00033	
K-BAC 1020	U.S. Well Services	Anti-Bacterial Agent						
			2,2-dibromo-3-nitripropionamide	10222-01-2		20.00000	0.00400	
			Deionized Water	7732-18-5		28.00000	0.00229	
AP One	U.S. Well Services	Gel Breakers						
			Ammonium Persulfate	7727-54-0		100.00000	0.00157	
AI-302	U.S. Well Services	Acid Corrosion Inhibitors						
			Water	7732-18-5		95.00000	0.00029	
			2-Propyn-1-ol compound with methylcyclohexane	38172-91-7		15.00000	0.00005	
Ingredients shown above are subject to 29 CFR 1910.1200(i) and appear on Material Safety Data Sheets (MSDS). Ingredients shown below are Non-MSDS.								

* Total Water Volume sources may include fresh water, produced water, and/or recycled water
 ** Information is based on the maximum potential for concentration and thus the total may be over 100%

Note: For Field Development Products (products that begin with FDP), MSDS level only information has been provided.
 Ingredient information for chemicals subject to 29 CFR 1910.1200(i) and Appendix D are obtained from suppliers Material Safety Data Sheets (MSDS)

Received
 Office of Oil & Gas
 JUN 21 2016

LATITUDE 39°30'00"

5,504'

LATITUDE 39°27'30"

LONGITUDE 80°50'00"

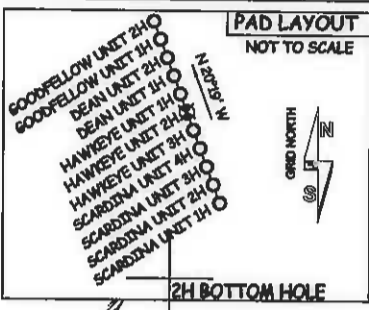
12,302'

LONGITUDE 80°50'00"

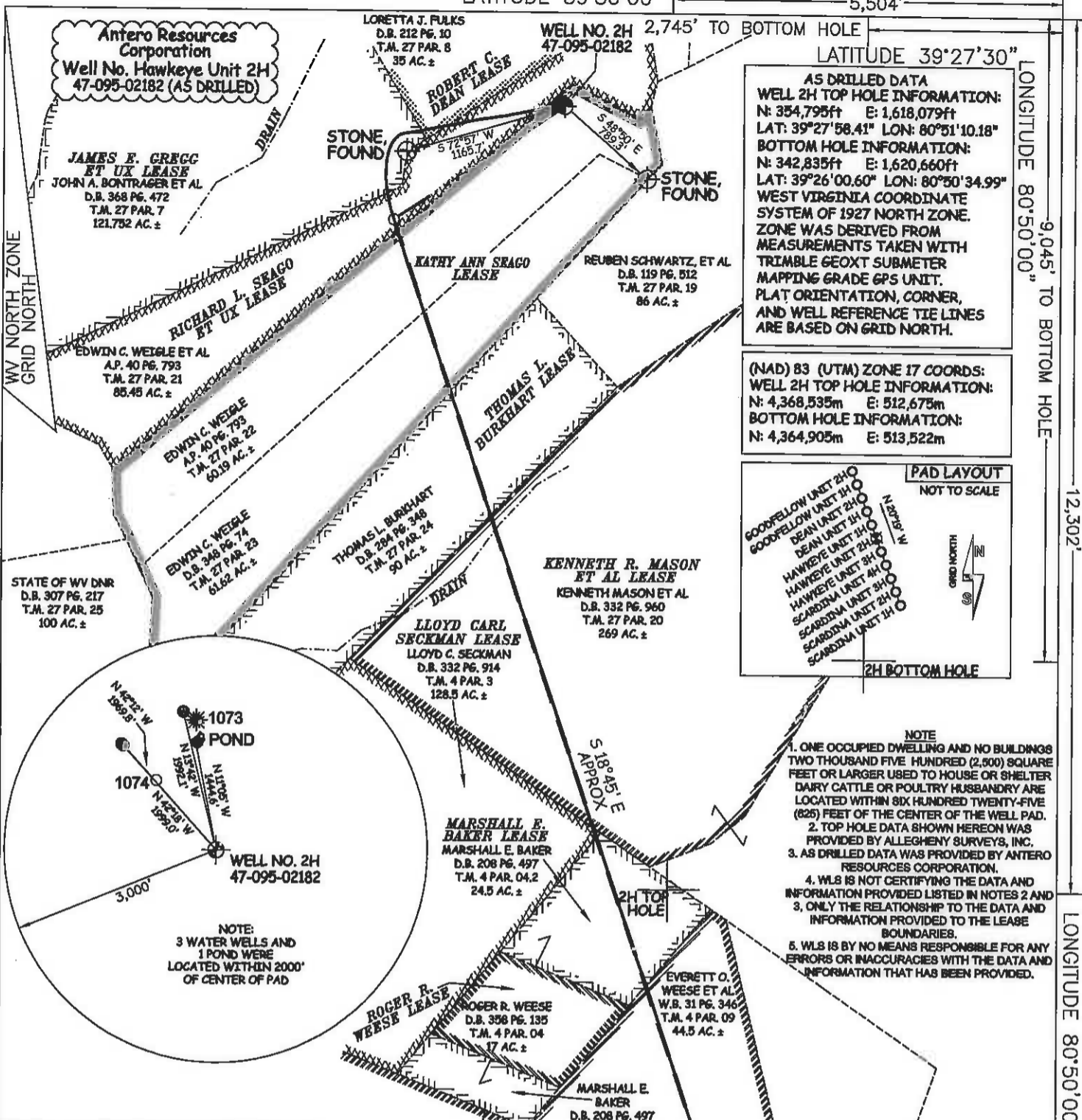
Antero Resources Corporation
Well No. Hawkeye Unit 2H
47-095-02182 (AS DRILLED)

AS DRILLED DATA
WELL 2H TOP HOLE INFORMATION:
N: 354,795ft E: 1,618,079ft
LAT: 39°27'58.41" LON: 80°51'10.18"
BOTTOM HOLE INFORMATION:
N: 342,835ft E: 1,620,660ft
LAT: 39°26'00.60" LON: 80°50'34.99"
WEST VIRGINIA COORDINATE SYSTEM OF 1927 NORTH ZONE. ZONE WAS DERIVED FROM MEASUREMENTS TAKEN WITH TRIMBLE GEOXT SUBMETER MAPPING GRADE GPS UNIT. PLAT ORIENTATION, CORNER, AND WELL REFERENCE TIE LINES ARE BASED ON GRID NORTH.

(NAD) 83 (UTM) ZONE 17 COORDS:
WELL 2H TOP HOLE INFORMATION:
N: 4,368,535m E: 512,675m
BOTTOM HOLE INFORMATION:
N: 4,364,905m E: 513,522m



- NOTE
1. ONE OCCUPIED DWELLING AND NO BUILDINGS TWO THOUSAND FIVE HUNDRED (2,500) SQUARE FEET OR LARGER USED TO HOUSE OR SHELTER DAIRY CATTLE OR POULTRY HUSBANDRY ARE LOCATED WITHIN SIX HUNDRED TWENTY-FIVE (625) FEET OF THE CENTER OF THE WELL PAD.
2. TOP HOLE DATA SHOWN HEREON WAS PROVIDED BY ALLEGHENY SURVEYS, INC.
3. AS DRILLED DATA WAS PROVIDED BY ANTERO RESOURCES CORPORATION.
4. WLS IS NOT CERTIFYING THE DATA AND INFORMATION PROVIDED LISTED IN NOTES 2 AND 3, ONLY THE RELATIONSHIP TO THE DATA AND INFORMATION PROVIDED TO THE LEASE BOUNDARIES.
5. WLS IS BY NO MEANS RESPONSIBLE FOR ANY ERRORS OR INACCURACIES WITH THE DATA AND INFORMATION THAT HAS BEEN PROVIDED.



47 - 095 - 02182
STATE COUNTY PERMIT



STATE OF WEST VIRGINIA, DIVISION OF ENVIRONMENTAL PROTECTION, OFFICE OF OIL AND GAS
WILLOW LAND SURVEYING PLLC
220 MASONIC AVE. PENNSBORO WEST VIRGINIA 26415

JOB # 13-038WA
DRAWING # HAWKEYE2HAD
SCALE 1" = 1000'
MINIMUM DEGREE OF ACCURACY SUBMETER
PROVEN SOURCE OF ELEV. SUBMETER MAPPING GRADE GPS

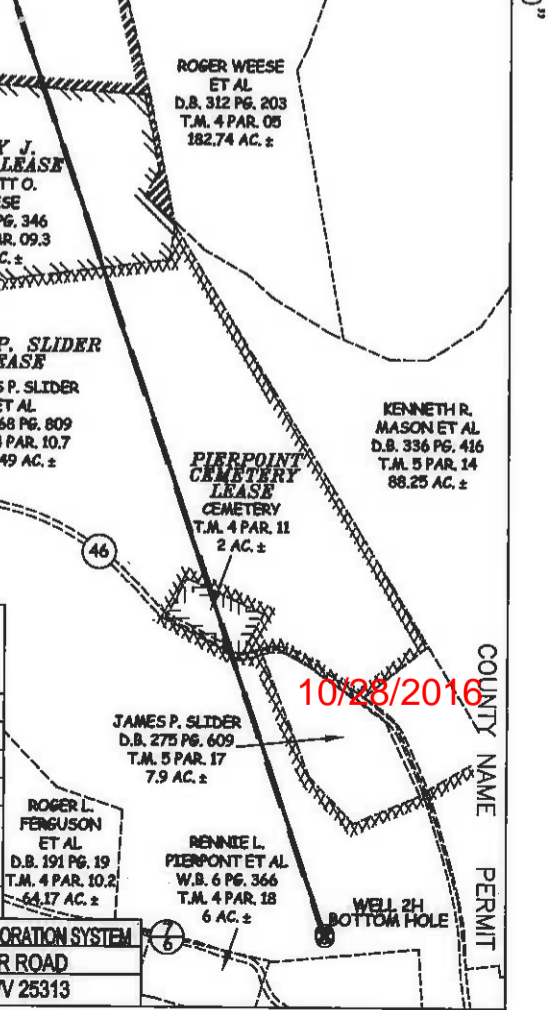
LEGEND table with symbols for Surface Owner Boundary Lines, Interior Surface Tracts, Existing Fence, Found monument, Proposed Well Path, and As Drilled Well Path.

STATE OF WEST VIRGINIA DEPARTMENT OF ENERGY DIVISION OF OIL AND GAS
DATE 08/04/15
OPERATOR'S WELL# HAWKEYE UNIT #2H

WELL TYPE: OIL GAS X LIQUID INJECTION WASTE DISPOSAL
(IF "GAS") PRODUCTION X STORAGE DEEP SHALLOW X
LOCATION: ELEVATION ORIGINAL 811' - AS DRILLED 817' WATERSHED OUTLET MIDDLE ISLAND CREEK
QUADRANGLE SHIRLEY 7.5' DISTRICT ELLSWORTH COUNTY TYLER

SURFACE OWNER EDWIN C. WEIGLE ACREAGE 60.19 ACRES +/-
OIL & GAS ROYALTY OWNER KATHY ANN SEAGO, RICHARD L. SEAGO, EDWIN C. WEIGLE, ROBERT C. DEAN, JAMES E. GREGG, EDWIN C. WEIGLE, THOMAS L. BURKHART, ROBERT C. DEAN, LLOYD C. SECKMAN, MARSHALL E. BAKER, BETTY J. WEESE, BETTY J. WEESE, JAMES P. SLIDER, PIERPOINT CEMETERY LEASE
LEASE ACREAGE 129.2 AC.; 74.2 AC.; 25 AC.; 141 AC.; 80 AC.; 200 AC.; 120.5 AC.; 24.5 AC.; 175.1 AC.; 40 AC.; 101.74 AC.; 2 AC.

PROPOSED WORK: DRILL CONVERT DRILL DEEPER REDRILL FRACTURE OR STIMULATE
PLUG OFF OLD FORMATION PERFORATE NEW FORMATION OTHER PHYSICAL CHANGE IN WELL (SPECIFY) (X) AS DRILLED PLUG & ABANDON CLEAN OUT & REPLUG
TARGET FORMATION MARCELLUS ESTIMATED DEPTH 6,413' TVD 18,721' MD
WELL OPERATOR ANTERO RESOURCES CORP. DESIGNATED AGENT DIANNA STAMPER - CT CORPORATION SYSTEM
ADDRESS 1615 WYNKOOP STREET ADDRESS 5400 D BIG TYLER ROAD
FORM WW-6 DENVER, CO 80202 CHARLESTON, WV 25313



10/28/2016

LATITUDE 39°30'00"

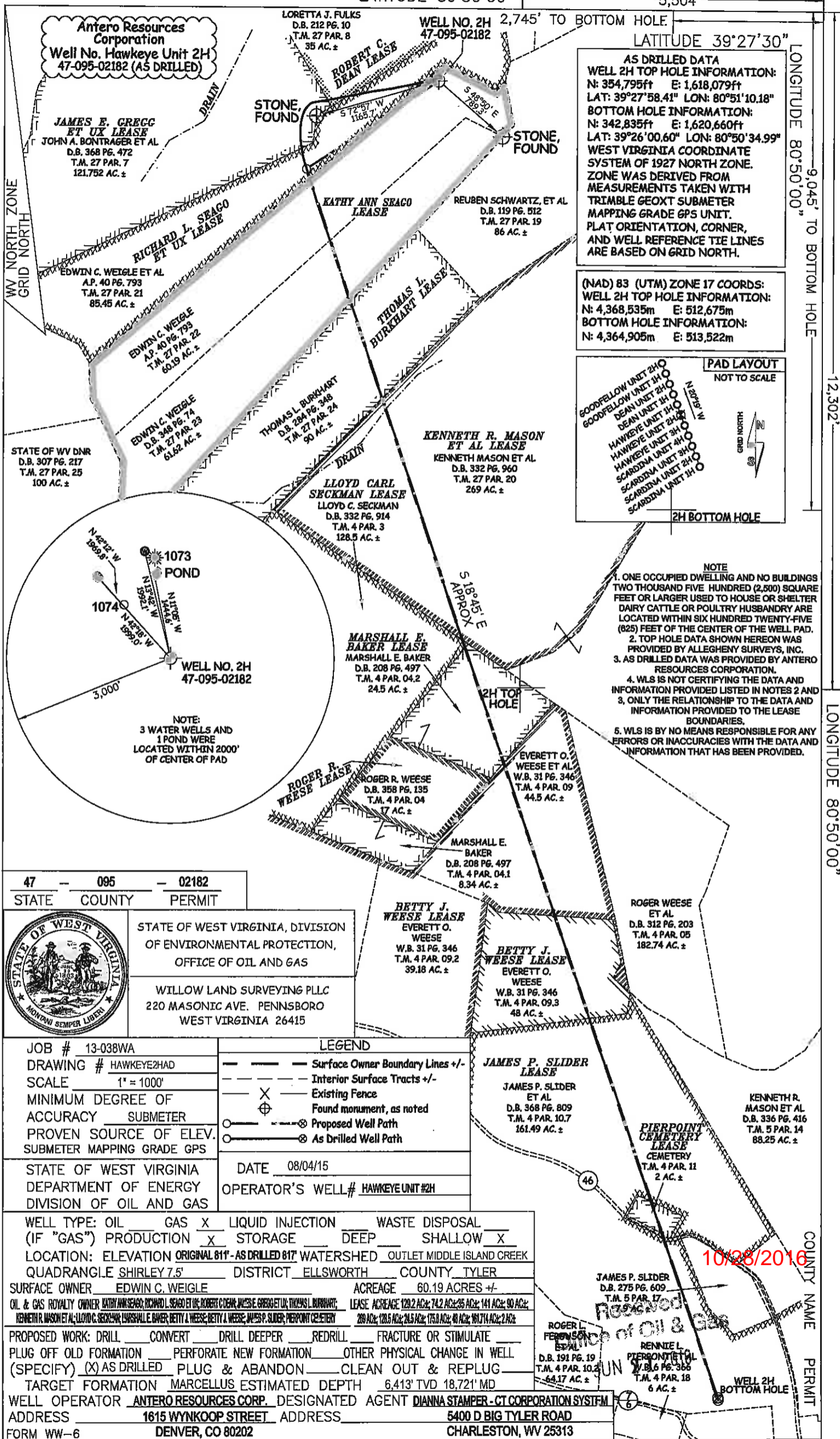
5,504'

LATITUDE 39°27'30"

LONGITUDE 80°50'00"

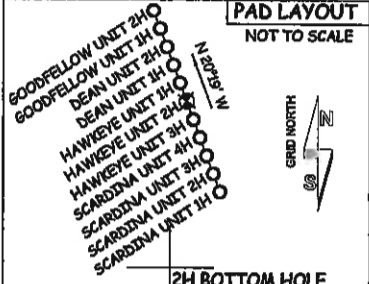
12,302'

LONGITUDE 80°50'00"



AS DRILLED DATA
WELL 2H TOP HOLE INFORMATION:
 N: 354,795ft E: 1,618,079ft
 LAT: 39°27'58.41" LON: 80°51'10.18"
BOTTOM HOLE INFORMATION:
 N: 342,835ft E: 1,620,660ft
 LAT: 39°26'00.60" LON: 80°50'34.99"
 WEST VIRGINIA COORDINATE SYSTEM OF 1927 NORTH ZONE. ZONE WAS DERIVED FROM MEASUREMENTS TAKEN WITH TRIMBLE GEOXT SUBMETER MAPPING GRADE GPS UNIT. PLAT ORIENTATION, CORNER, AND WELL REFERENCE TIE LINES ARE BASED ON GRID NORTH.

(NAD) 83 (UTM) ZONE 17 COORDS:
WELL 2H TOP HOLE INFORMATION:
 N: 4,368,535m E: 512,675m
BOTTOM HOLE INFORMATION:
 N: 4,364,905m E: 513,522m



- NOTE**
- ONE OCCUPIED DWELLING AND NO BUILDINGS TWO THOUSAND FIVE HUNDRED (2,500) SQUARE FEET OR LARGER USED TO HOUSE OR SHELTER DAIRY CATTLE OR POULTRY HUSBANDRY ARE LOCATED WITHIN SIX HUNDRED TWENTY-FIVE (625) FEET OF THE CENTER OF THE WELL PAD.
 - TOP HOLE DATA SHOWN HEREON WAS PROVIDED BY ALLEGHENY SURVEYS, INC.
 - AS DRILLED DATA WAS PROVIDED BY ANTERO RESOURCES CORPORATION.
 - WLS IS NOT CERTIFYING THE DATA AND INFORMATION PROVIDED LISTED IN NOTES 2 AND 3, ONLY THE RELATIONSHIP TO THE DATA AND INFORMATION PROVIDED TO THE LEASE BOUNDARIES.
 - WLS IS BY NO MEANS RESPONSIBLE FOR ANY ERRORS OR INACCURACIES WITH THE DATA AND INFORMATION THAT HAS BEEN PROVIDED.

47 - 095 - 02182
 STATE COUNTY PERMIT

STATE OF WEST VIRGINIA, DIVISION OF ENVIRONMENTAL PROTECTION, OFFICE OF OIL AND GAS
 WILLOW LAND SURVEYING PLLC
 220 MASONIC AVE. PENNSBORO WEST VIRGINIA 26415

JOB # 13-038WA
 DRAWING # HAWKEYE2HAD
 SCALE 1" = 1000'
 MINIMUM DEGREE OF ACCURACY SUBMETER
 PROVEN SOURCE OF ELEV. SUBMETER MAPPING GRADE GPS
 STATE OF WEST VIRGINIA DEPARTMENT OF ENERGY DIVISION OF OIL AND GAS

LEGEND
 - - - Surface Owner Boundary Lines +/-
 - - - Interior Surface Tracts +/-
 X Existing Fence
 ⊕ Found monument, as noted
 ⊙ Proposed Well Path
 ⊙ As Drilled Well Path

DATE 08/04/15
 OPERATOR'S WELL # HAWKEYE UNIT #2H

WELL TYPE: OIL GAS LIQUID INJECTION WASTE DISPOSAL
 (IF "GAS") PRODUCTION STORAGE DEEP SHALLOW
 LOCATION: ELEVATION ORIGINAL 817' - AS DRILLED 817' WATERSHED OUTLET MIDDLE ISLAND CREEK
 QUADRANGLE SHIRLEY 7.5' DISTRICT ELLSWORTH COUNTY TYLER
 SURFACE OWNER EDWIN C. WEIGLE ACREAGE 60.19 ACRES +/-
 OIL & GAS ROYALTY OWNER KATHY ANN SEAGO, RICHARD L. SEAGO ET U, ROBERT C. DEAN, JAMES E. GREGG ET U, THOMAS L. BURKHART, KENNETH R. MASON ET AL, LLOYD C. SECKMAN, MARSHALL E. BAKER, BETTY J. WEESE, BETTY J. WEESE, JAMES P. SLIDER, PIERPOINT CEMETERY LEASE
 LEASE ACREAGE 120.2 AC±; 74.2 AC±; 35 AC±; 141 AC±; 90 AC±; 280 AC±; 120.5 AC±; 24.5 AC±; 175.0 AC±; 40 AC±; 161.714 AC±; 2 AC±
 PROPOSED WORK: DRILL CONVERT DRILL DEEPER REDRILL FRACTURE OR STIMULATE
 PLUG OFF OLD FORMATION PERFORATE NEW FORMATION OTHER PHYSICAL CHANGE IN WELL (SPECIFY) (X) AS DRILLED PLUG & ABANDON CLEAN OUT & REPLUG
 TARGET FORMATION MARCELLUS ESTIMATED DEPTH 6,413' TVD 18,721' MD
 WELL OPERATOR ANTERO RESOURCES CORP. DESIGNATED AGENT DIANNA STAMPER - CT CORPORATION SYSTEM
 ADDRESS 1615 WYNKOOP STREET DENVER, CO 80202 ADDRESS 5400 D BIG TYLER ROAD CHARLESTON, WV 25313
 FORM WW-6

ROGER WEESE ET AL D.B. 312 PG. 203 T.M. 4 PAR. 05 182.74 AC. ±
 BETTY J. WEESE LEASE EVERETT O. WEESE W.B. 31 PG. 346 T.M. 4 PAR. 09.2 39.18 AC. ±
 BETTY J. WEESE LEASE EVERETT O. WEESE W.B. 31 PG. 346 T.M. 4 PAR. 09.3 48 AC. ±
 JAMES P. SLIDER LEASE JAMES P. SLIDER ET AL D.B. 368 PG. 809 T.M. 4 PAR. 10.7 161.49 AC. ±
 KENNETH R. MASON ET AL D.B. 336 PG. 414 T.M. 5 PAR. 14 88.25 AC. ±
 PIERPOINT CEMETERY LEASE CEMETERY T.M. 4 PAR. 11 2 AC. ±
 JAMES P. SLIDER D.B. 275 PG. 609 T.M. 5 PAR. 17
 ROGER L. PERKINSON ET AL D.B. 191 PG. 19 T.M. 4 PAR. 10.2 64.17 AC. ±
 RENNIE L. PIERPOINT ET AL W.B. 6 PG. 366 T.M. 4 PAR. 18 6 AC. ±
 WELL 2H BOTTOM HOLE

10/28/2016

Office of Oil & Gas

UN