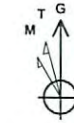




**Ingot Unit 1H**  
**Tyler County WV**  
 Northing: 14326543.53  
 Easting: 1680236.58  
 As Drilled



To convert Magnetic North to Grid, Subtract 8.55°  
 To convert True North to Grid, Subtract 0.09°

Azimuths to Grid North  
 True North: -0.09°  
 Magnetic North: -8.55°  
 Magnetic Field  
 Strength: 52230.0nT  
 Dip Angle: 66.92°  
 Date: 5/18/2015  
 Model: BGM2014

Precision 525 GL 1201' + KB 19' @ 1220.0usft  
 Gr: 1201.0

		WELL DETAILS Ingot Unit 1H			
+N/-S	+E/-W	Northing	Easting	Latitude	Longitude
0.0	0.0	14326543.53	1680236.58	39° 27' 7.238 N	80° 51' 32.172 W

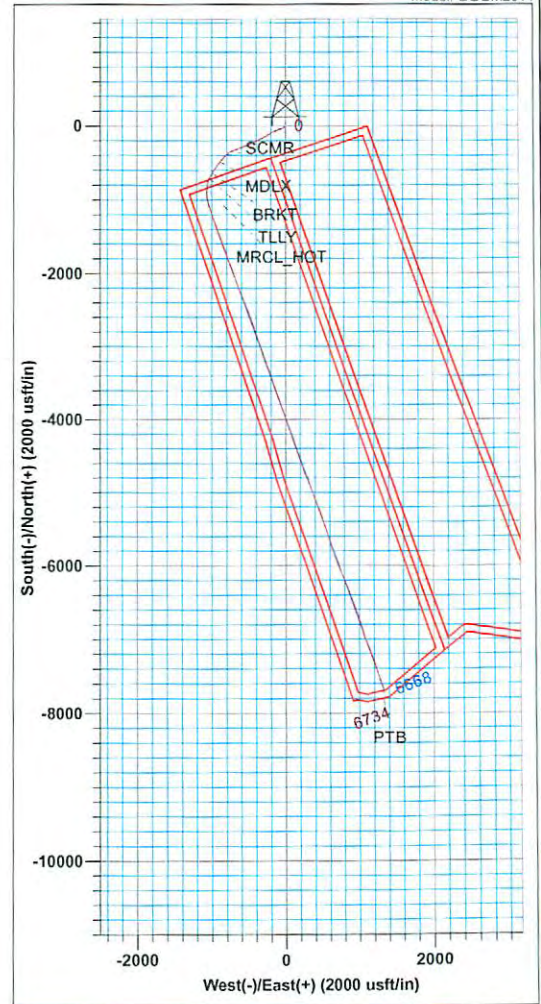
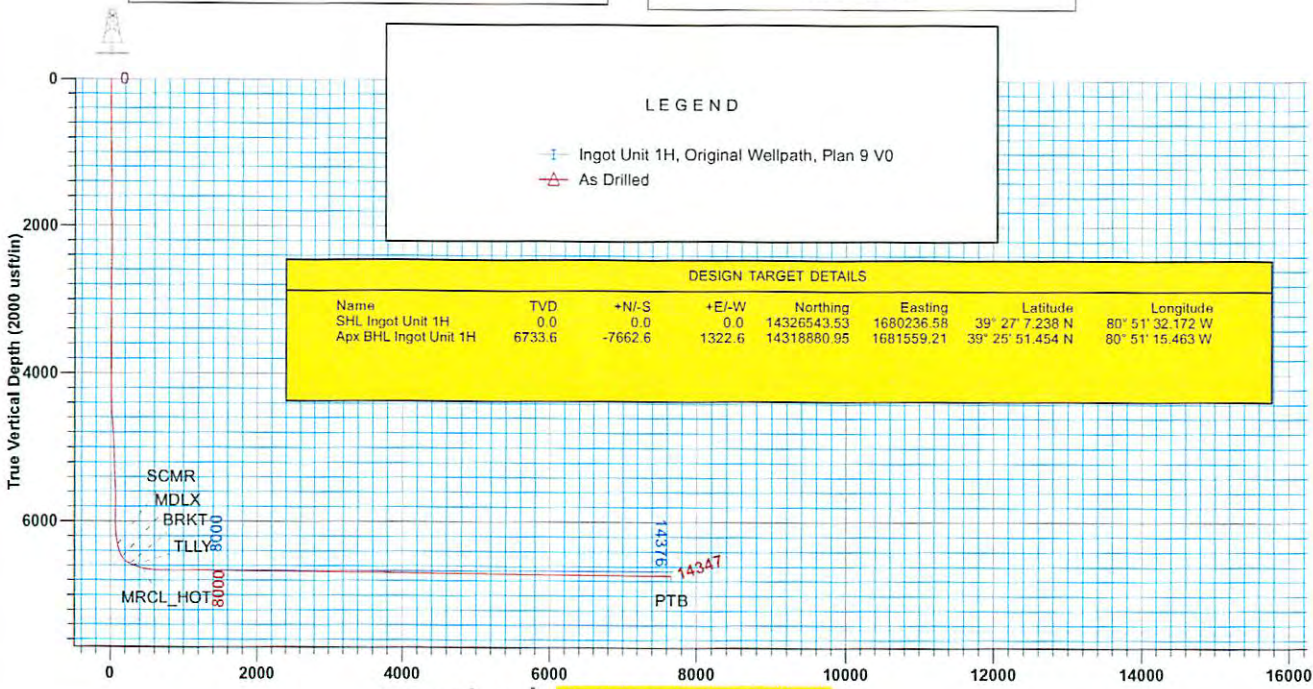
Genie Lightfoot  
 10:35, June 09 2015  
 Scientific Drilling  
 11220 NW 10th Street  
 Yukon OK 73099

**PROJECT DETAILS:** Tyler County WV  
 Geodetic System: Universal Transverse Mercator (US Survey Feet)  
 Datum: NAD 1927 (NADCON CONUS)  
 Ellipsoid: Clarke 1866  
 Zone: Zone 17N (84 W to 78 W)  
 System Datum: Mean Sea Level

**SITE DETAILS:** Pierpoint Pad: Ingot/Klondike/Wall/Weigle  
 Site Centre Northing: 14326547.37  
 Easting: 1680227.52  
 Positional Uncertainty: 0.0  
 Convergence: 0.09  
 Local North: Grid

**LEGEND**  
 -i- Ingot Unit 1H, Original Wellpath, Plan 9 V0  
 -△- As Drilled

DESIGN TARGET DETAILS							
Name	TVD	+N/-S	+E/-W	Northing	Easting	Latitude	Longitude
SHL Ingot Unit 1H	0.0	0.0	0.0	14326543.53	1680236.58	39° 27' 7.238 N	80° 51' 32.172 W
ApX BHL Ingot Unit 1H	6733.6	-7662.6	1322.6	14318880.95	1681559.21	39° 25' 51.454 N	80° 51' 15.463 W



Received Vertical Section at 160.29° (2000 usft/in)  
 Office of Oil & Gas  
 JAN 13 2016



# Antero

Tyler County WV  
Pierpoint Pad:Ingot/Klondike/Wall/Weigle  
Ingot Unit 1H  
Original Wellpath

Design: As Drilled

## EOW Completion Report

09 June, 2015

Received  
Office of Oil & Gas  
JAN 13 2016



02/12/2016



<b>Company:</b>	Antero	<b>Local Co-ordinate Reference:</b>	Well Ingot Unit 1H
<b>Project:</b>	Tyler County WV	<b>TVD Reference:</b>	Precision 525 GL 1201' + KB 19' @ 1220.0usft
<b>Site:</b>	Pierpoint Pad:Ingot/Klondike/Wall/Weigle	<b>MD Reference:</b>	Precision 525 GL 1201' + KB 19' @ 1220.0usft
<b>Well:</b>	Ingot Unit 1H	<b>North Reference:</b>	Grid
<b>Wellbore:</b>	Original Wellpath	<b>Survey Calculation Method:</b>	Minimum Curvature
<b>Design:</b>	As Drilled	<b>Database:</b>	Oklahoma District

<b>Project</b>	Tyler County WV, Tyler Co West Virginia		
<b>Map System:</b>	Universal Transverse Mercator (US Survey Feet)	<b>System Datum:</b>	Mean Sea Level
<b>Geo Datum:</b>	NAD 1927 (NADCON CONUS)		
<b>Map Zone:</b>	Zone 17N (84 W to 78 W)		

<b>Site</b>	Pierpoint Pad:Ingot/Klondike/Wall/Weigle		
-------------	--	--	--

<b>Site Position:</b>		<b>Northing:</b>	14,326,547.37 usft	<b>Latitude:</b>	39° 27' 7.276 N
<b>From:</b>	Map	<b>Easting:</b>	1,680,227.52 usft	<b>Longitude:</b>	80° 51' 32.288 W
<b>Position Uncertainty:</b>	0.0 usft	<b>Slot Radius:</b>	13-3/16"	<b>Grid Convergence:</b>	0.09 °

<b>Well</b>	Ingot Unit 1H, Marcellus				
-------------	--------------------------	--	--	--	--

<b>Well Position</b>	<b>+N/-S</b>	0.0 usft	<b>Northing:</b>	14,326,543.53 usft	<b>Latitude:</b>	39° 27' 7.238 N
	<b>+E/-W</b>	0.0 usft	<b>Easting:</b>	1,680,236.58 usft	<b>Longitude:</b>	80° 51' 32.172 W
<b>Position Uncertainty</b>		2.0 usft	<b>Wellhead Elevation:</b>	1,220.0 usft	<b>Ground Level:</b>	1,201.0 usft

<b>Wellbore</b>	Original Wellpath				
-----------------	-------------------	--	--	--	--

Magnetics	Model Name	Sample Date	Declination (°)	Dip Angle (°)	Field Strength (nT)
	BGGM2014	5/18/2015	-8.47	66.92	52,230

<b>Design</b>	As Drilled				
---------------	------------	--	--	--	--

<b>Audit Notes:</b>					
<b>Version:</b>	1.0	<b>Phase:</b>	ACTUAL	<b>Tie On Depth:</b>	0.0

<b>Vertical Section:</b>	<b>Depth From (TVD) (usft)</b>	<b>+N/-S (usft)</b>	<b>+E/-W (usft)</b>	<b>Direction (°)</b>
	0.0	0.0	0.0	160.29

Received  
Office of Oil & Gas  
JAN 13 2016

<b>Survey Program</b>	Date 6/9/2015				
-----------------------	---------------	--	--	--	--

From (usft)	To (usft)	Survey (Wellbore)	Tool Name	Description
99.9	6,087.9	Survey #8 Final Gyro (Original Wellpath)	Standard Keeper 104	Standard Wireline Keeper ver 1.0.4
6,150.0	14,347.0	Survey #9 SDI MWD (Original Wellpath)	MWD SDI	MWD - Standard ver 1.0.1

<b>Survey</b>									
---------------	--	--	--	--	--	--	--	--	--

MD (usft)	Inc (°)	Azi (azimuth) (°)	TVD (usft)	N/S (usft)	E/W (usft)	V. Sec (usft)	DLeg (°/100usft)
0.0	0.00	0.00	0.0	0.0	0.0	0.0	0.00
99.9	0.12	214.41	99.9	-0.1	-0.1	0.1	0.12
106.5	0.06	206.13	106.5	-0.1	-0.1	0.1	0.93
132.6	0.15	202.59	132.6	-0.1	-0.1	0.1	0.35
156.3	0.19	186.83	156.3	-0.2	-0.1	0.2	0.26
181.6	0.43	217.66	181.6	-0.3	-0.2	0.2	1.12
206.8	0.21	277.24	206.8	-0.4	-0.3	0.3	1.47
232.9	0.10	297.16	232.9	-0.4	-0.3	0.2	0.46
256.0	0.09	235.60	256.0	-0.4	-0.4	0.2	0.42
281.1	0.16	188.92	281.1	-0.4	-0.4	0.3	0.47
306.3	0.21	203.84	306.3	-0.5	-0.4	0.3	0.27





<b>Company:</b>	Antero	<b>Local Co-ordinate Reference:</b>	Well Ingot Unit 1H
<b>Project:</b>	Tyler County WV	<b>TVD Reference:</b>	Precision 525 GL 1201' + KB 19' @ 1220.0usft
<b>Site:</b>	Pierpoint Pad:Ingot/Klondike/Wall/Weigle	<b>MD Reference:</b>	Precision 525 GL 1201' + KB 19' @ 1220.0usft
<b>Well:</b>	Ingot Unit 1H	<b>North Reference:</b>	Grid
<b>Wellbore:</b>	Original Wellpath	<b>Survey Calculation Method:</b>	Minimum Curvature
<b>Design:</b>	As Drilled	<b>Database:</b>	Oklahoma District

Survey							
MD (usft)	Inc (°)	Azi (azimuth) (°)	TVD (usft)	N/S (usft)	E/W (usft)	V. Sec (usft)	DLeg (°/100usft)
331.5	0.25	168.21	331.5	-0.6	-0.4	0.4	0.58
356.7	0.34	215.63	356.7	-0.7	-0.5	0.5	1.00
376.3	0.17	209.91	376.3	-0.8	-0.5	0.6	0.88
380.0	0.06	158.65	380.0	-0.8	-0.5	0.6	3.76
404.4	0.10	98.36	404.4	-0.8	-0.5	0.6	0.36
430.7	0.26	202.48	430.7	-0.9	-0.5	0.7	1.14
455.7	0.20	198.60	455.7	-1.0	-0.5	0.7	0.25
480.7	0.54	211.49	480.7	-1.1	-0.6	0.8	1.39
505.1	1.14	224.21	505.1	-1.4	-0.8	1.0	2.56
530.1	1.45	225.20	530.1	-1.8	-1.2	1.3	1.25
554.3	1.62	227.59	554.3	-2.2	-1.7	1.5	0.75
578.9	2.36	231.11	578.9	-2.8	-2.3	1.8	3.04
603.4	2.85	233.08	603.4	-3.5	-3.2	2.2	2.03
628.7	3.62	234.25	628.6	-4.3	-4.4	2.6	3.05
655.5	4.14	234.45	655.3	-5.4	-5.8	3.1	1.94
679.4	4.68	235.68	679.2	-6.4	-7.3	3.6	2.29
705.8	4.90	233.95	705.4	-7.7	-9.1	4.1	1.00
729.5	4.96	234.30	729.1	-8.9	-10.8	4.7	0.28
756.0	5.06	233.75	755.4	-10.2	-12.7	5.4	0.42
779.7	5.13	233.72	779.1	-11.5	-14.4	6.0	0.30
803.5	5.19	233.47	802.8	-12.7	-16.1	6.6	0.27
829.7	5.27	233.56	828.9	-14.2	-18.0	7.3	0.31
855.6	5.28	234.86	854.7	-15.6	-19.9	7.9	0.46
879.1	5.28	233.28	878.0	-16.8	-21.7	8.5	0.62
904.8	5.15	232.99	903.7	-18.2	-23.6	9.2	0.52
930.6	5.16	234.01	929.4	-19.6	-25.4	9.9	0.36
954.0	4.71	232.09	952.7	-20.8	-27.0	10.5	2.04
979.7	4.32	230.73	978.3	-22.1	-28.6	11.1	1.57
1,004.0	4.07	231.31	1,002.5	-23.2	-30.0	11.7	1.04
1,029.9	3.73	231.54	1,028.4	-24.3	-31.4	12.3	1.32
1,055.7	3.61	232.49	1,054.1	-25.3	-32.7	12.8	0.52
1,078.8	3.40	229.99	1,077.2	-26.2	-33.8	13.3	1.12
1,104.7	3.15	233.41	1,103.0	-27.1	-34.9	13.7	1.23
1,130.4	3.11	233.35	1,128.7	-27.9	-36.1	14.1	0.16
1,153.6	2.78	233.07	1,151.9	-28.7	-37.0	14.5	1.42
1,179.6	2.37	233.09	1,177.8	-29.4	-38.0	14.8	1.58
1,205.3	2.24	233.55	1,203.5	-30.0	-38.8	15.1	0.51
1,228.4	2.19	232.63	1,226.7	-30.5	-39.5	15.4	0.26
1,254.4	1.98	232.41	1,252.6	-31.1	-40.2	15.7	0.81
1,280.7	1.77	232.35	1,278.8	-31.6	-40.9	16.0	0.80
1,303.2	1.50	235.73	1,301.4	-32.0	-41.4	16.1	1.27
1,329.6	1.45	233.48	1,327.7	-32.4	-42.0	16.3	0.29
1,355.5	1.34	236.30	1,353.6	-32.8	-42.5	16.5	0.50
1,378.7	1.18	234.77	1,376.8	-33.0	-42.9	16.6	0.70

Received  
Office of Oil & Gas  
JAN 13 2016

<b>Company:</b>	Antero	<b>Local Co-ordinate Reference:</b>	Well Ingot Unit 1H
<b>Project:</b>	Tyler County WV	<b>TVD Reference:</b>	Precision 525 GL 1201' + KB 19' @ 1220.0usft
<b>Site:</b>	Pierpoint Pad:Ingot/Klondike/Wall/Weigle	<b>MD Reference:</b>	Precision 525 GL 1201' + KB 19' @ 1220.0usft
<b>Well:</b>	Ingot Unit 1H	<b>North Reference:</b>	Grid
<b>Wellbore:</b>	Original Wellpath	<b>Survey Calculation Method:</b>	Minimum Curvature
<b>Design:</b>	As Drilled	<b>Database:</b>	Oklahoma District

Survey								
MD (usft)	Inc (°)	Azi (azimuth) (°)	TVD (usft)	N/S (usft)	E/W (usft)	V. Sec (usft)	DLeg (°/100usft)	
1,404.3	1.25	234.75	1,402.5	-33.4	-43.4	16.8	0.27	
1,430.3	1.12	232.23	1,428.4	-33.7	-43.8	16.9	0.54	
1,456.0	0.88	236.82	1,454.1	-33.9	-44.2	17.0	0.99	
1,479.1	0.86	237.20	1,477.3	-34.1	-44.5	17.1	0.09	
1,505.1	0.76	234.42	1,503.2	-34.3	-44.8	17.2	0.41	
1,530.7	0.91	242.71	1,528.8	-34.5	-45.1	17.3	0.75	
1,553.9	0.78	234.52	1,552.0	-34.7	-45.4	17.4	0.76	
1,579.9	0.56	237.18	1,578.0	-34.9	-45.6	17.4	0.86	
1,603.1	0.58	233.29	1,601.2	-35.0	-45.8	17.5	0.19	
1,628.7	0.48	242.90	1,626.8	-35.1	-46.0	17.5	0.52	
1,654.8	0.43	226.66	1,652.9	-35.2	-46.2	17.6	0.53	
1,680.2	0.32	234.60	1,678.3	-35.4	-46.3	17.7	0.48	
1,705.5	0.31	231.31	1,703.6	-35.4	-46.4	17.7	0.08	
1,730.9	0.29	229.23	1,729.0	-35.5	-46.5	17.7	0.09	
1,753.7	0.15	229.39	1,751.8	-35.6	-46.6	17.8	0.61	
1,778.9	0.21	203.61	1,777.0	-35.6	-46.6	17.8	0.39	
1,804.3	0.19	218.73	1,802.4	-35.7	-46.7	17.9	0.22	
1,829.5	0.18	157.81	1,827.6	-35.8	-46.7	17.9	0.74	
1,854.8	0.11	153.23	1,852.9	-35.8	-46.7	18.0	0.28	
1,880.5	0.13	149.59	1,878.6	-35.9	-46.6	18.1	0.08	
1,905.9	0.05	178.91	1,904.0	-35.9	-46.6	18.1	0.35	
1,928.6	0.13	156.78	1,926.7	-36.0	-46.6	18.1	0.38	
1,953.9	0.15	128.88	1,952.0	-36.0	-46.6	18.2	0.28	
1,979.2	0.17	149.72	1,977.4	-36.1	-46.5	18.3	0.24	
2,004.5	0.08	117.05	2,002.6	-36.1	-46.5	18.3	0.44	
2,029.7	0.16	200.60	2,027.8	-36.1	-46.5	18.3	0.68	
2,055.0	0.11	170.99	2,053.1	-36.2	-46.5	18.4	0.33	
2,080.4	0.19	145.46	2,078.5	-36.3	-46.5	18.5	0.40	
2,105.6	0.26	138.16	2,103.7	-36.3	-46.4	18.6	0.30	
2,130.8	0.23	158.27	2,129.0	-36.4	-46.4	18.7	0.36	
2,154.2	0.18	157.56	2,152.3	-36.5	-46.3	18.7	0.21	
2,179.6	0.15	197.43	2,177.7	-36.6	-46.3	18.8	0.46	
2,204.8	0.16	131.86	2,203.0	-36.6	-46.3	18.9	0.67	
2,230.1	0.15	149.85	2,228.2	-36.7	-46.3	18.9	0.20	
2,255.5	0.22	173.70	2,253.6	-36.8	-46.2	19.0	0.40	
2,280.8	0.24	204.90	2,278.9	-36.9	-46.3	19.1	0.49	
2,306.0	0.22	148.21	2,304.1	-36.9	-46.3	19.2	0.87	
2,329.0	0.02	214.02	2,327.1	-37.0	-46.2	19.2	0.92	
2,354.4	0.09	279.33	2,352.5	-37.0	-46.3	19.2	0.33	
2,379.7	0.24	287.00	2,377.8	-37.0	-46.3	19.2	0.60	
2,404.9	0.22	285.65	2,403.1	-36.9	-46.4	19.1	0.08	
2,430.8	0.24	279.80	2,428.9	-36.9	-46.5	19.1	0.12	
2,456.0	0.34	283.46	2,454.1	-36.9	-46.7	19.0	0.40	
2,505.1	0.31	305.90	2,503.2	-36.8	-46.9	18.8	0.26	
2,530.9	0.35	295.22	2,529.0	-36.7	-47.0	18.7	0.28	

Received  
Office of Oil & Gas  
JAN 13 2016





EOW Completion Report



<b>Company:</b>	Antero	<b>Local Co-ordinate Reference:</b>	Well Ingot Unit 1H
<b>Project:</b>	Tyler County WV	<b>TVD Reference:</b>	Precision 525 GL 1201' + KB 19' @ 1220.0usft
<b>Site:</b>	Pierpoint Pad:Ingot/Klondike/Wall/Weigle	<b>MD Reference:</b>	Precision 525 GL 1201' + KB 19' @ 1220.0usft
<b>Well:</b>	Ingot Unit 1H	<b>North Reference:</b>	Grid
<b>Wellbore:</b>	Original Wellpath	<b>Survey Calculation Method:</b>	Minimum Curvature
<b>Design:</b>	As Drilled	<b>Database:</b>	Oklahoma District

MD (usft)	Inc (°)	Azi (azimuth) (°)	TVD (usft)	N/S (usft)	E/W (usft)	V. Sec (usft)	DLeg (°/100usft)
2,554.4	0.39	285.32	2,552.6	-36.6	-47.2	18.6	0.32
2,580.6	0.27	303.76	2,578.7	-36.6	-47.3	18.5	0.61
2,604.2	0.29	301.31	2,602.3	-36.5	-47.4	18.4	0.10
2,629.8	0.32	310.35	2,627.9	-36.4	-47.5	18.3	0.22
2,655.7	0.29	291.96	2,653.8	-36.4	-47.6	18.2	0.39
2,679.1	0.38	295.69	2,677.2	-36.3	-47.8	18.1	0.40
2,704.9	0.30	304.11	2,703.0	-36.2	-47.9	18.0	0.37
2,728.3	0.42	298.95	2,726.4	-36.2	-48.0	17.9	0.53
2,754.4	0.37	299.48	2,752.5	-36.1	-48.2	17.7	0.19
2,780.3	0.31	293.50	2,778.4	-36.0	-48.3	17.6	0.27
2,804.1	0.36	300.55	2,802.2	-36.0	-48.4	17.5	0.27
2,829.5	0.38	287.91	2,827.6	-35.9	-48.6	17.4	0.33
2,855.2	0.43	298.53	2,853.3	-35.8	-48.8	17.3	0.35
2,879.0	0.41	296.51	2,877.1	-35.7	-48.9	17.1	0.10
2,904.9	0.43	303.08	2,903.0	-35.6	-49.1	17.0	0.20
2,930.6	0.50	291.81	2,928.7	-35.5	-49.3	16.8	0.45
2,954.1	0.39	294.07	2,952.1	-35.5	-49.4	16.7	0.47
2,979.8	0.45	296.73	2,977.9	-35.4	-49.6	16.6	0.24
3,005.9	0.49	296.31	3,004.0	-35.3	-49.8	16.4	0.15
3,029.4	0.55	298.61	3,027.5	-35.2	-50.0	16.3	0.27
3,055.2	0.54	293.25	3,053.3	-35.1	-50.2	16.1	0.20
3,080.9	0.53	294.80	3,079.0	-35.0	-50.4	15.9	0.07
3,104.4	0.48	292.19	3,102.5	-34.9	-50.6	15.8	0.23
3,130.5	0.60	291.30	3,128.6	-34.8	-50.8	15.6	0.46
3,153.9	0.54	293.27	3,152.0	-34.7	-51.0	15.5	0.27
3,179.9	0.53	301.70	3,177.9	-34.6	-51.3	15.3	0.31
3,205.6	0.32	292.79	3,203.7	-34.5	-51.4	15.2	0.85
3,229.0	0.53	293.75	3,227.1	-34.5	-51.6	15.0	0.90
3,254.4	0.58	286.52	3,252.5	-34.4	-51.8	14.9	0.34
3,280.2	0.58	295.86	3,278.3	-34.3	-52.1	14.7	0.37
3,305.4	0.44	287.33	3,303.5	-34.2	-52.3	14.6	0.63
3,330.8	0.46	287.82	3,328.8	-34.1	-52.5	14.4	0.08
3,353.7	0.50	283.77	3,351.7	-34.1	-52.6	14.3	0.23
3,379.0	0.56	287.68	3,377.0	-34.0	-52.9	14.2	0.28
3,404.7	0.48	291.39	3,402.8	-33.9	-53.1	14.0	0.34
3,429.5	0.51	282.07	3,427.6	-33.9	-53.3	13.9	0.35
3,455.0	0.46	283.86	3,453.1	-33.8	-53.5	13.8	0.21
3,480.2	0.52	279.92	3,478.3	-33.8	-53.7	13.7	0.27
3,505.7	0.44	278.79	3,503.8	-33.8	-53.9	13.6	0.32
3,530.3	0.47	280.28	3,528.3	-33.7	-54.1	13.5	0.13
3,555.4	0.53	275.46	3,553.5	-33.7	-54.3	13.4	0.29
3,580.2	0.66	267.05	3,578.3	-33.7	-54.6	13.3	0.63
3,605.1	0.99	256.45	3,603.2	-33.7	-54.9	13.2	1.46
3,630.5	1.41	250.57	3,628.6	-33.9	-55.5	13.2	1.72

Received  
Office of Oil & Gas  
JAN 13 2016



<b>Company:</b>	Antero	<b>Local Co-ordinate Reference:</b>	Well Ingot Unit 1H
<b>Project:</b>	Tyler County WV	<b>TVD Reference:</b>	Precision 525 GL 1201' + KB 19' @ 1220.0usft
<b>Site:</b>	Pierpoint Pad:Ingot/Klondike/Wall/Weigle	<b>MD Reference:</b>	Precision 525 GL 1201' + KB 19' @ 1220.0usft
<b>Well:</b>	Ingot Unit 1H	<b>North Reference:</b>	Grid
<b>Wellbore:</b>	Original Wellpath	<b>Survey Calculation Method:</b>	Minimum Curvature
<b>Design:</b>	As Drilled	<b>Database:</b>	Oklahoma District

Survey								
MD (usft)	Inc (°)	Azi (azimuth) (°)	TVD (usft)	N/S (usft)	E/W (usft)	V. Sec (usft)	DLeg (°/100usft)	
3,655.8	1.95	246.01	3,653.9	-34.2	-56.1	13.2	2.20	
3,680.3	2.26	246.20	3,678.3	-34.5	-57.0	13.3	1.27	
3,705.5	2.48	244.93	3,703.6	-35.0	-57.9	13.4	0.90	
3,730.6	2.89	244.52	3,728.6	-35.5	-59.0	13.5	1.64	
3,755.5	3.33	246.12	3,753.5	-36.0	-60.2	13.6	1.80	
3,780.0	3.81	246.33	3,777.9	-36.7	-61.6	13.7	1.96	
3,805.2	4.20	246.68	3,803.1	-37.4	-63.2	13.9	1.55	
3,830.7	4.66	246.86	3,828.5	-38.1	-65.0	14.0	1.80	
3,854.5	5.16	246.85	3,852.2	-38.9	-66.9	14.1	2.10	
3,880.2	5.68	247.90	3,877.7	-39.9	-69.1	14.2	2.07	
3,905.4	5.99	248.86	3,902.8	-40.8	-71.5	14.3	1.29	
3,930.6	6.43	250.20	3,927.9	-41.8	-74.1	14.3	1.84	
3,955.2	6.87	251.80	3,952.3	-42.7	-76.8	14.3	1.95	
3,980.7	7.23	251.91	3,977.7	-43.7	-79.7	14.2	1.41	
4,004.9	7.55	251.65	4,001.7	-44.6	-82.7	14.1	1.33	
4,031.0	8.07	250.64	4,027.5	-45.8	-86.0	14.1	2.07	
4,055.7	8.44	250.40	4,051.9	-47.0	-89.4	14.1	1.50	
4,080.3	8.53	250.58	4,076.3	-48.2	-92.8	14.1	0.38	
4,105.0	8.98	249.46	4,100.7	-49.5	-96.3	14.1	1.95	
4,130.2	9.39	249.45	4,125.5	-50.9	-100.1	14.1	1.63	
4,154.9	9.70	248.90	4,149.9	-52.3	-103.9	14.2	1.31	
4,180.6	10.07	248.91	4,175.2	-53.9	-108.1	14.3	1.44	
4,205.6	10.39	248.73	4,199.8	-55.5	-112.2	14.4	1.29	
4,230.0	11.06	248.99	4,223.8	-57.2	-116.4	14.5	2.75	
4,255.0	11.71	248.78	4,248.3	-58.9	-121.0	14.7	2.60	
4,280.3	12.16	248.30	4,273.1	-60.9	-125.9	14.8	1.82	
4,305.2	12.38	247.60	4,297.4	-62.8	-130.8	15.0	1.07	
4,330.8	12.49	246.41	4,322.4	-65.0	-135.9	15.4	1.09	
4,355.9	12.83	245.91	4,346.8	-67.2	-140.9	15.8	1.43	
4,380.6	12.98	245.12	4,371.0	-69.5	-145.9	16.2	0.94	
4,405.9	13.20	244.63	4,395.5	-71.9	-151.1	16.8	0.98	
4,430.1	13.48	244.45	4,419.2	-74.3	-156.2	17.3	1.17	
4,455.1	13.78	244.49	4,443.5	-76.9	-161.5	17.9	1.20	
4,480.0	14.23	245.03	4,467.6	-79.4	-166.9	18.5	1.89	
4,505.9	14.48	245.48	4,492.6	-82.1	-172.8	19.1	1.06	
4,529.9	14.70	245.50	4,515.9	-84.6	-178.3	19.6	0.92	
4,555.9	14.71	244.50	4,541.1	-87.4	-184.3	20.2	0.98	
4,580.6	14.69	240.98	4,565.0	-90.3	-189.8	21.0	3.62	
4,605.8	15.19	239.56	4,589.3	-93.5	-195.5	22.1	2.46	
4,630.1	15.83	237.59	4,612.7	-96.9	-201.0	23.4	3.41	
4,655.3	16.80	236.63	4,636.9	-100.8	-206.9	25.1	4.00	
4,680.0	17.37	236.82	4,660.6	-104.7	-213.0	26.8	2.32	
4,705.9	17.92	237.07	4,685.2	-109.0	-219.6	28.6	2.14	
4,731.0	18.21	237.61	4,709.1	-113.2	-226.1	30.3	1.34	

Received  
Office of the State Auditor  
JAN 13 2016





EOW Completion Report



<b>Company:</b>	Antero	<b>Local Co-ordinate Reference:</b>	Well Ingot Unit 1H
<b>Project:</b>	Tyler County WV	<b>TVD Reference:</b>	Precision 525 GL 1201' + KB 19' @ 1220.0usft
<b>Site:</b>	Pierpoint Pad:Ingot/Klondike/Wall/Weigle	<b>MD Reference:</b>	Precision 525 GL 1201' + KB 19' @ 1220.0usft
<b>Well:</b>	Ingot Unit 1H	<b>North Reference:</b>	Grid
<b>Wellbore:</b>	Original Wellpath	<b>Survey Calculation Method:</b>	Minimum Curvature
<b>Design:</b>	As Drilled	<b>Database:</b>	Oklahoma District

Survey							
MD (usft)	Inc (°)	Azi (azimuth) (°)	TVD (usft)	N/S (usft)	E/W (usft)	V. Sec (usft)	DLeg (°/100usft)
4,755.9	18.51	237.71	4,732.7	-117.4	-232.8	32.0	1.21
4,780.7	18.91	238.39	4,756.2	-121.6	-239.5	33.7	1.84
4,805.0	19.53	238.76	4,779.2	-125.8	-246.4	35.3	2.59
4,830.8	20.24	239.64	4,803.4	-130.3	-253.9	37.0	3.00
4,855.0	20.73	240.27	4,826.1	-134.5	-261.2	38.6	2.21
4,880.9	20.93	241.03	4,850.3	-139.0	-269.3	40.1	1.30
4,905.9	20.96	241.82	4,873.6	-143.3	-277.1	41.5	1.14
4,930.6	21.14	241.65	4,896.6	-147.5	-284.9	42.8	0.77
4,955.3	20.72	241.58	4,919.7	-151.7	-292.7	44.1	1.70
4,979.5	20.40	241.06	4,942.4	-155.8	-300.1	45.4	1.52
5,004.9	20.34	241.24	4,966.2	-160.1	-307.9	46.8	0.34
5,030.9	20.50	242.11	4,990.6	-164.4	-315.9	48.2	1.32
5,055.6	20.43	242.86	5,013.7	-168.3	-323.5	49.4	1.10
5,079.4	20.29	244.10	5,036.0	-172.1	-330.9	50.4	1.90
5,105.2	20.21	244.99	5,060.3	-175.9	-339.0	51.3	1.23
5,129.9	20.42	246.40	5,083.4	-179.4	-346.8	51.9	2.16
5,155.4	20.67	246.55	5,107.3	-183.0	-355.0	52.5	1.00
5,180.8	21.10	246.70	5,131.0	-186.6	-363.3	53.1	1.70
5,205.5	21.46	246.76	5,154.1	-190.1	-371.6	53.7	1.46
5,229.8	21.85	246.68	5,176.6	-193.7	-379.8	54.2	1.61
5,255.4	22.34	246.91	5,200.3	-197.5	-388.6	54.8	1.95
5,280.1	22.78	247.03	5,223.2	-201.2	-397.4	55.4	1.78
5,304.5	23.32	247.19	5,245.6	-204.9	-406.2	55.9	2.23
5,330.0	23.46	246.95	5,269.0	-208.8	-415.5	56.5	0.66
5,354.9	22.81	246.61	5,291.9	-212.7	-424.5	57.1	2.67
5,380.8	22.77	245.73	5,315.8	-216.7	-433.7	57.8	1.32
5,404.6	22.77	244.99	5,337.7	-220.6	-442.0	58.6	1.20
5,430.8	22.67	244.19	5,361.9	-224.9	-451.2	59.6	1.24
5,455.5	22.38	243.17	5,384.7	-229.1	-459.6	60.7	1.97
5,480.6	22.41	243.68	5,407.9	-233.4	-468.2	61.8	0.78
5,505.5	22.48	243.55	5,430.9	-237.6	-476.7	62.9	0.34
5,530.3	22.42	243.41	5,453.9	-241.8	-485.2	64.0	0.32
5,555.4	21.76	242.75	5,477.1	-246.1	-493.6	65.2	2.81
5,580.4	21.41	243.09	5,500.3	-250.3	-501.8	66.4	1.49
5,605.9	21.42	243.63	5,524.0	-254.5	-510.1	67.5	0.78
5,630.1	21.67	243.95	5,546.6	-258.4	-518.1	68.5	1.14
5,655.1	21.64	244.50	5,569.9	-262.4	-526.4	69.5	0.82
5,680.1	21.55	245.06	5,593.1	-266.3	-534.7	70.4	0.90
5,705.6	21.86	246.39	5,616.8	-270.2	-543.3	71.1	2.28
5,729.9	21.58	247.54	5,639.3	-273.7	-551.6	71.7	2.10
5,754.8	22.03	248.18	5,662.5	-277.2	-560.2	72.1	2.04
5,779.7	22.45	249.30	5,685.5	-280.6	-568.9	72.3	2.40
5,805.2	22.41	250.10	5,709.1	-284.0	-578.1	72.4	1.20
5,830.7	21.88	250.75	5,732.7	-287.2	-587.1	72.4	2.30

Received  
Office of Oil & Gas  
JAN 13 2016





<b>Company:</b>	Antero	<b>Local Co-ordinate Reference:</b>	Well Ingot Unit 1H
<b>Project:</b>	Tyler County WV	<b>TVD Reference:</b>	Precision 525 GL 1201' + KB 19' @ 1220.0usft
<b>Site:</b>	Pierpoint Pad:Ingot/Klondike/Wall/Weigle	<b>MD Reference:</b>	Precision 525 GL 1201' + KB 19' @ 1220.0usft
<b>Well:</b>	Ingot Unit 1H	<b>North Reference:</b>	Grid
<b>Wellbore:</b>	Original Wellpath	<b>Survey Calculation Method:</b>	Minimum Curvature
<b>Design:</b>	As Drilled	<b>Database:</b>	Oklahoma District

Survey							
MD (usft)	Inc (°)	Azi (azimuth) (°)	TVD (usft)	N/S (usft)	E/W (usft)	V. Sec (usft)	DLeg (°/100usft)
5,854.4	22.18	251.51	5,754.7	-290.1	-595.5	72.3	1.74
5,879.6	22.14	251.74	5,778.0	-293.1	-604.5	72.0	0.38
5,904.9	22.23	251.56	5,801.5	-296.1	-613.6	71.8	0.44
5,930.3	22.68	250.85	5,824.9	-299.2	-622.8	71.7	2.07
5,955.7	22.82	250.36	5,848.4	-302.5	-632.1	71.6	0.93
5,980.7	23.06	250.14	5,871.4	-305.8	-641.2	71.6	1.02
6,005.7	23.44	249.74	5,894.3	-309.2	-650.5	71.7	1.65
6,029.9	23.78	249.90	5,916.5	-312.5	-659.6	71.7	1.43
6,055.3	23.80	249.43	5,939.8	-316.1	-669.2	71.9	0.75
6,080.2	24.01	249.46	5,962.5	-319.6	-678.7	72.0	0.85
6,087.9	23.88	249.40	5,969.5	-320.7	-681.6	72.1	1.73
6,150.0	23.85	247.80	6,026.3	-329.9	-705.0	72.8	1.04
6,195.0	23.27	246.39	6,067.6	-336.9	-721.5	73.8	1.80
6,240.0	22.62	245.28	6,109.0	-344.1	-737.6	75.2	1.74
6,285.0	21.88	244.36	6,150.7	-351.3	-753.0	76.8	1.82
6,330.0	20.71	235.05	6,192.6	-359.5	-767.1	79.7	7.94
6,375.0	20.43	225.82	6,234.7	-369.5	-779.2	85.1	7.23
6,419.0	22.34	224.86	6,275.7	-380.8	-790.6	91.9	4.41
6,457.0	25.30	224.03	6,310.5	-391.8	-801.4	98.6	7.85
<b>SCMR</b>							
6,464.0	25.85	223.90	6,316.8	-393.9	-803.5	99.9	7.85
6,482.0	28.12	223.85	6,332.8	-399.8	-809.1	103.5	12.61
6,527.0	32.02	224.34	6,371.8	-416.0	-824.8	113.5	8.68
6,571.0	38.31	222.95	6,407.7	-434.4	-842.3	124.9	14.41
6,616.0	43.15	219.65	6,441.8	-456.4	-861.6	139.1	11.77
6,661.0	48.54	218.56	6,473.1	-481.5	-882.0	155.8	12.10
6,673.0	50.20	218.30	6,481.0	-488.6	-887.6	160.6	13.89
<b>MDLX</b>							
6,706.0	54.75	217.63	6,501.1	-509.3	-903.7	174.6	13.89
6,751.0	60.17	216.87	6,525.3	-539.4	-926.7	195.3	12.13
6,796.0	64.86	216.55	6,546.0	-571.4	-950.5	217.4	10.44
6,841.0	69.73	215.42	6,563.4	-605.0	-974.9	240.8	11.07
6,879.0	71.62	212.48	6,576.0	-634.8	-994.9	262.0	8.83
<b>BRKT</b>							
6,885.0	71.92	212.02	6,577.8	-639.6	-997.9	265.5	8.83
6,930.0	72.96	205.64	6,591.4	-677.2	-1,018.6	293.9	13.71
6,961.0	73.81	201.78	6,600.3	-704.3	-1,030.6	315.5	12.23
<b>TLLY</b>							
6,975.0	74.21	200.05	6,604.2	-716.9	-1,035.4	325.7	12.23
7,020.0	75.04	194.21	6,616.1	-758.4	-1,048.1	360.4	12.65
7,065.0	75.83	189.58	6,627.4	-801.0	-1,057.1	397.5	10.11
7,110.0	76.76	185.85	6,638.1	-844.3	-1,063.0	436.3	8.31
7,114.0	76.96	185.44	6,639.0	-848.2	-1,063.4	439.8	11.28
<b>MRCL_HOT</b>							
7,155.0	79.06	181.22	6,647.5	-888.2	-1,065.7	476.7	11.28

Received  
 Office of Oil & Gas  
 JAN 13 2016  
 Office of Oil & Gas  
 JAN 13 2016



<b>Company:</b>	Antero	<b>Local Co-ordinate Reference:</b>	Well Ingot Unit 1H
<b>Project:</b>	Tyler County WV	<b>TVD Reference:</b>	Precision 525 GL 1201' + KB 19' @ 1220.0usft
<b>Site:</b>	Pierpoint Pad:Ingot/Klondike/Wall/Weigle	<b>MD Reference:</b>	Precision 525 GL 1201' + KB 19' @ 1220.0usft
<b>Well:</b>	Ingot Unit 1H	<b>North Reference:</b>	Grid
<b>Wellbore:</b>	Original Wellpath	<b>Survey Calculation Method:</b>	Minimum Curvature
<b>Design:</b>	As Drilled	<b>Database:</b>	Oklahoma District

Survey							
MD (usft)	Inc (°)	Azi (azimuth) (°)	TVD (usft)	N/S (usft)	E/W (usft)	V. Sec (usft)	DLeg (°/100usft)
7,199.0	81.23	176.38	6,655.0	-931.5	-1,064.8	517.8	11.91
7,244.0	83.56	171.44	6,661.0	-975.8	-1,060.0	561.2	12.05
7,289.0	85.67	167.29	6,665.2	-1,019.9	-1,051.8	605.4	10.31
7,358.0	89.33	162.04	6,668.2	-1,086.3	-1,033.5	674.1	9.27
7,447.0	90.60	162.66	6,668.3	-1,171.1	-1,006.5	763.0	1.59
7,537.0	90.70	161.43	6,667.3	-1,256.7	-978.8	853.0	1.37
7,627.0	89.60	159.96	6,667.0	-1,341.7	-949.1	943.0	2.04
7,716.0	88.83	159.10	6,668.3	-1,425.0	-917.9	1,032.0	1.30
7,806.0	89.83	160.54	6,669.3	-1,509.5	-886.9	1,122.0	1.95
7,896.0	90.07	161.41	6,669.4	-1,594.6	-857.5	1,211.9	1.00
7,986.0	88.79	158.72	6,670.3	-1,679.2	-826.9	1,301.9	3.31
8,075.0	89.19	160.33	6,671.8	-1,762.5	-795.7	1,390.9	1.86
8,165.0	90.27	160.42	6,672.3	-1,847.3	-765.5	1,480.9	1.20
8,255.0	89.43	160.26	6,672.5	-1,932.1	-735.2	1,570.9	0.95
8,345.0	89.66	160.03	6,673.2	-2,016.7	-704.7	1,660.9	0.36
8,435.0	89.33	158.63	6,674.0	-2,100.9	-672.9	1,750.9	1.60
8,524.0	90.13	160.96	6,674.4	-2,184.4	-642.2	1,839.9	2.77
8,614.0	89.70	158.27	6,674.6	-2,268.8	-610.8	1,929.9	3.03
8,704.0	88.92	156.49	6,675.7	-2,351.8	-576.2	2,019.7	2.16
8,794.0	89.13	158.17	6,677.2	-2,434.9	-541.5	2,109.6	1.88
8,883.0	89.50	158.17	6,678.2	-2,517.5	-508.4	2,198.5	0.42
8,973.0	89.30	161.25	6,679.2	-2,601.9	-477.2	2,288.5	3.43
9,062.0	89.40	161.27	6,680.2	-2,686.2	-448.6	2,377.5	0.11
9,152.0	88.99	160.22	6,681.5	-2,771.1	-419.0	2,467.5	1.25
9,242.0	90.03	163.46	6,682.2	-2,856.6	-390.9	2,557.4	3.78
9,332.0	89.29	161.58	6,682.8	-2,942.5	-363.9	2,647.3	2.24
9,421.0	88.46	159.30	6,684.5	-3,026.3	-334.1	2,736.3	2.73
9,511.0	90.20	161.07	6,685.6	-3,111.0	-303.6	2,826.3	2.76
9,601.0	89.60	159.54	6,685.7	-3,195.7	-273.3	2,916.3	1.83
9,690.0	89.76	160.04	6,686.2	-3,279.2	-242.5	3,005.3	0.59
9,780.0	89.19	159.31	6,687.0	-3,363.6	-211.3	3,095.3	1.03
9,870.0	89.87	162.65	6,687.8	-3,448.7	-181.9	3,185.3	3.79
9,960.0	89.73	164.14	6,688.1	-3,534.9	-156.2	3,275.1	1.66
10,049.0	89.97	162.70	6,688.3	-3,620.2	-130.8	3,364.0	1.64
10,139.0	90.07	162.26	6,688.3	-3,706.0	-103.7	3,453.9	0.50
10,228.0	89.60	160.41	6,688.6	-3,790.4	-75.2	3,542.9	2.14
10,318.0	89.63	158.46	6,689.2	-3,874.6	-43.6	3,632.9	2.17
10,408.0	88.59	160.24	6,690.6	-3,958.8	-11.9	3,722.9	2.29
10,497.0	88.39	159.47	6,692.9	-4,042.3	18.7	3,811.8	0.89
10,587.0	89.16	160.10	6,694.8	-4,126.8	49.8	3,901.8	1.11
10,677.0	88.49	160.48	6,696.7	-4,211.5	80.2	3,991.8	0.86
10,766.0	89.93	160.84	6,697.9	-4,295.5	109.7	4,080.8	1.67
10,856.0	89.36	161.45	6,698.5	-4,380.6	138.7	4,170.8	0.93
10,946.0	89.06	162.35	6,699.7	-4,466.2	166.7	4,260.7	1.05

Received  
Office of Oil & Gas  
JAN 13 2016





<b>Company:</b> Antero	<b>Local Co-ordinate Reference:</b> Well Ingot Unit 1H
<b>Project:</b> Tyler County WV	<b>TVD Reference:</b> Precision 525 GL 1201' + KB 19' @ 1220.0usft
<b>Site:</b> Pierpoint Pad:Ingot/Klondike/Wall/Weigle	<b>MD Reference:</b> Precision 525 GL 1201' + KB 19' @ 1220.0usft
<b>Well:</b> Ingot Unit 1H	<b>North Reference:</b> Grid
<b>Wellbore:</b> Original Wellpath	<b>Survey Calculation Method:</b> Minimum Curvature
<b>Design:</b> As Drilled	<b>Database:</b> Oklahoma District

MD (usft)	Inc (°)	Azi (azimuth) (°)	TVD (usft)	N/S (usft)	E/W (usft)	V. Sec (usft)	DLeg (°/100usft)
11,035.0	89.46	160.48	6,700.9	-4,550.5	195.1	4,349.7	2.15
11,125.0	87.21	160.80	6,703.5	-4,635.4	224.9	4,439.6	2.53
11,215.0	89.03	159.48	6,706.4	-4,720.0	255.4	4,529.6	2.50
11,304.0	88.42	157.87	6,708.4	-4,802.9	287.8	4,618.5	1.93
11,394.0	89.63	158.88	6,709.9	-4,886.5	321.0	4,708.5	1.75
11,484.0	89.83	158.43	6,710.4	-4,970.3	353.7	4,798.4	0.55
11,574.0	89.73	159.24	6,710.7	-5,054.3	386.2	4,888.4	0.91
11,663.0	89.33	158.59	6,711.4	-5,137.3	418.2	4,977.4	0.86
11,753.0	90.47	160.25	6,711.6	-5,221.6	449.9	5,067.3	2.24
11,843.0	90.60	159.27	6,710.7	-5,306.0	481.0	5,157.3	1.10
11,932.0	90.24	160.95	6,710.1	-5,389.7	511.3	5,246.3	1.93
12,022.0	89.13	162.77	6,710.6	-5,475.2	539.3	5,336.3	2.37
12,112.0	89.06	162.87	6,712.0	-5,561.2	565.9	5,426.2	0.14
12,201.0	89.06	162.94	6,713.5	-5,646.2	592.0	5,515.1	0.08
12,291.0	89.43	162.61	6,714.7	-5,732.2	618.7	5,605.0	0.55
12,380.0	89.26	160.75	6,715.7	-5,816.7	646.6	5,694.0	2.10
12,470.0	88.22	158.63	6,717.7	-5,901.0	677.9	5,783.9	2.62
12,560.0	89.46	158.45	6,719.5	-5,984.8	710.8	5,873.9	1.39
12,649.0	89.16	156.20	6,720.5	-6,066.9	745.1	5,962.7	2.55
12,739.0	89.90	158.95	6,721.3	-6,150.1	779.4	6,052.6	3.16
12,829.0	88.89	156.39	6,722.2	-6,233.3	813.6	6,142.5	3.06
12,918.0	89.80	159.12	6,723.3	-6,315.7	847.3	6,231.4	3.23
13,008.0	89.53	159.34	6,723.8	-6,399.8	879.2	6,321.4	0.39
13,098.0	89.52	159.58	6,724.5	-6,484.1	910.8	6,411.4	0.27
13,187.0	90.23	160.61	6,724.7	-6,567.8	941.1	6,500.4	1.41
13,277.0	89.29	158.63	6,725.1	-6,652.1	972.4	6,590.4	2.44
13,366.0	89.09	161.30	6,726.4	-6,735.7	1,002.9	6,679.3	3.01
13,456.0	89.97	163.30	6,727.1	-6,821.5	1,030.3	6,769.3	2.43
13,546.0	89.66	165.06	6,727.4	-6,908.1	1,054.8	6,859.1	1.99
13,635.0	89.66	159.93	6,727.9	-6,992.9	1,081.6	6,948.0	5.76
13,725.0	88.69	157.06	6,729.2	-7,076.6	1,114.6	7,037.9	3.37
13,815.0	90.40	159.35	6,729.9	-7,160.2	1,148.0	7,127.8	3.18
13,905.0	90.47	159.42	6,729.2	-7,244.4	1,179.7	7,217.8	0.11
13,994.0	89.66	161.52	6,729.1	-7,328.3	1,209.4	7,306.8	2.53
14,084.0	89.50	161.86	6,729.8	-7,413.7	1,237.7	7,396.8	0.42
14,173.0	89.33	161.82	6,730.7	-7,498.3	1,265.4	7,485.8	0.20
14,263.0	88.93	160.80	6,732.1	-7,583.5	1,294.3	7,575.7	1.22
14,283.0	88.96	160.18	6,732.4	-7,602.4	1,300.9	7,595.7	3.10
14,347.0	88.96	160.18	6,733.6	-7,662.6	1,322.6	7,659.7	0.00

PTB

Received  
Office of Oil & Gas  
JAN 13 2016



<b>Company:</b>	Antero	<b>Local Co-ordinate Reference:</b>	Well Ingot Unit 1H
<b>Project:</b>	Tyler County WV	<b>TVD Reference:</b>	Precision 525 GL 1201' + KB 19' @ 1220.0usft
<b>Site:</b>	Pierpoint Pad:Ingot/Klondike/Wall/Weigle	<b>MD Reference:</b>	Precision 525 GL 1201' + KB 19' @ 1220.0usft
<b>Well:</b>	Ingot Unit 1H	<b>North Reference:</b>	Grid
<b>Wellbore:</b>	Original Wellpath	<b>Survey Calculation Method:</b>	Minimum Curvature
<b>Design:</b>	As Drilled	<b>Database:</b>	Oklahoma District

Design Annotations

Measured Depth (usft)	Vertical Depth (usft)	Local Coordinates		Comment
		+N/-S (usft)	+E/-W (usft)	
6,457.0	6,310.5	-391.8	-801.4	SCMR
6,673.0	6,481.0	-488.6	-887.6	MDLX
6,879.0	6,576.0	-634.8	-994.9	BRKT
6,961.0	6,600.3	-704.3	-1,030.6	TLLY
7,114.0	6,639.0	-848.2	-1,063.4	MRCL_HOT
14,347.0	6,733.6	-7,662.6	1,322.6	PTB

Checked By: \_\_\_\_\_ Approved By: \_\_\_\_\_ Date: \_\_\_\_\_

Received  
Office of Oil & Gas  
JAN 13 2016