

State of West Virginia
Department of Environmental Protection - Office of Oil and Gas
Well Operator's Report of Well Work

API 47-095-02215 County Tyler District Ellsworth
Quad Shirley 7.5' Pad Name Pierpoint Pad Field/Pool Name ---
Farm name Lloyd C. Seckman Well Number Weigle Unit 2H
Operator (as registered with the OOG) Antero Resources Corporation
Address 1615 Wynkoop Street City Denver State CO Zip 80202

As Drilled location NAD 83/UTM Attach an as-drilled plat, profile view, and deviation survey
Top hole Northing 4366960m Easting 512146m
Landing Point of Curve Northing 4366960.80m Easting 512137.94m
Bottom Hole Northing 4370051m Easting 511040m

Elevation (ft) 1201' GL Type of Well New Existing Type of Report Interim Final
Permit Type Deviated Horizontal Horizontal 6A Vertical Depth Type Deep Shallow
Type of Operation Convert Deepen Drill Plug Back Redrilling Rework Stimulate
Well Type Brine Disposal CBM Gas Oil Secondary Recovery Solution Mining Storage Other _____
Type of Completion Single Multiple Fluids Produced Brine Gas NGL Oil Other _____
Drilled with Cable Rotary

Drilling Media Surface hole Air Mud Fresh Water Intermediate hole Air Mud Fresh Water Brine
Production hole Air Mud Fresh Water Brine
Mud Type(s) and Additive(s)
Air - Foam & 4% KCL
Mud - Polymer

Date permit issued 1/15/2015 Date drilling commenced 1/23/2015 Date drilling ceased 5/21/2015
Date completion activities began 8/28/2015 Date completion activities ceased 11/2/2015
Verbal plugging (Y/N) N/A Date permission granted N/A Granted by N/A

Please note: Operator is required to submit a plugging application within 5 days of verbal permission to plug

Freshwater depth(s) ft 256', 267' Open mine(s) (Y/N) depths No
Salt water depth(s) ft 889', 2253' Void(s) encountered (Y/N) depths None
Coal depth(s) ft None Cavern(s) encountered (Y/N) depths None
Is coal being mined in area (Y/N) No

RECEIVED
Office of Oil and Gas

Reviewed by:

JAN 27 2016

DMH
02/12/2016

API 47-095 - 02215 Farm name Lloyd C. Seckman Well number Weigle Unit 2H

CASING STRINGS	Hole Size	Casing Size	Depth	New or Used	Grade wt/ft	Basket Depth(s)	Did cement circulate (Y/N) * Provide details below*
Conductor	24"	20"	40'	New	94#/H-40	N/A	Y
Surface	17-1/2"	13-3/8"	479'	New	48#/J-55	N/A	Y
Coal							
Intermediate 1	12-1/4"	9-5/8"	2541'	New	36#/J-55	N/A	Y
Intermediate 2							
Intermediate 3							
Production	8-3/4"/8-1/2"	5-1/2"	17,469'	New	23#/P-110	N/A	Y
Tubing		2-3/8"	6805'		4.7#/N-80	N/A	
Packer type and depth set		N/A					

Comment Details _____

CEMENT DATA	Class/Type of Cement	Number of Sacks	Slurry wt (ppg)	Yield (ft ³ /sks)	Volume (ft ³)	Cement Top (MD)	WOC (hrs)
Conductor	Class A	200 sx	15.6	1.18	38 Cu. Ft.	0'	8 hrs
Surface	Class A	617 sx	15.6	1.18	333 Cu. Ft.	0'	8 hrs
Coal							
Intermediate 1	Class A	877 sx	15.2	1.86	796 Cu. Ft.	0'	8 hrs
Intermediate 2							
Intermediate 3							
Production	Class H	1017 sx (Lead), 1648 sx (Tail)	14.5 (Lead), 15.2 (Tail)	1.3 (Lead), 1.85 (Tail)	3535 Cu. Ft.	~500' into Intermediate Casing	8 hrs
Tubing							

Drillers TD (ft) 17,469' MD, 6687' TVD Loggers TD (ft) 17,420'

Deepest formation penetrated Marcellus Shale Plug back to (ft) N/A

Plug back procedure N/A

** Logs were submitted with INTERIM Completion Report Form WR-35

Kick off depth (ft) 6190'

Check all wireline logs run caliper density deviated/directional induction
 neutron resistivity gamma ray temperature sonic

Well cored Yes No Conventional Sidewall Were cuttings collected Yes No

DESCRIBE THE CENTRALIZER PLACEMENT USED FOR EACH CASING STRING _____

Conductor - 0
Surface - 1 above guide shoe, 1 above insert float, 1 every 4th joint to surface
Intermediate - 1 above float joint, 1 above float collar, 1 every 4th joint to surface
Production - 1 above float joint, 1 below float collar, 1 every 3rd joint to top of cement

WAS WELL COMPLETED AS SHOT HOLE Yes No DETAILS _____

WAS WELL COMPLETED OPEN HOLE? Yes No DETAILS _____

WERE TRACERS USED Yes No TYPE OF TRACER(S) USED None

RECEIVED
Office of Oil and Gas

JAN 27 2016

WV Department of Environmental Protection 02/12/2016

API 47-095 - 02215

Farm name Lloyd C. Seckman

Well number Weigle Unit 2H

PERFORATION RECORD

Stage No.	Perforation date	Perforated from MD ft.	Perforated to MD ft.	Number of Perforations	Formation(s)
		*PLEASE SEE ATTACHED EXHIBIT 1			

Please insert additional pages as applicable.

STIMULATION INFORMATION PER STAGE

Complete a separate record for each stimulation stage.

Stage No.	Stimulations Date	Ave Pump Rate (BPM)	Ave Treatment Pressure (PSI)	Max Breakdown Pressure (PSI)	ISIP (PSI)	Amount of Proppant (lbs)	Amount of Water (bbls)	Amount of Nitrogen/other (units)
		*PLEASE SEE ATTACHED EXHIBIT 2						

RECEIVED
Office of Oil and Gas

Please insert additional pages as applicable.

JAN 27 2016

API 47- 095 - 02215 Farm name Lloyd C. Seckman Well number Weigle Unit 2H

<u>PRODUCING FORMATION(S)</u>	<u>DEPTHS</u>	
<u>Marcellus</u>	<u>6647' (Top)</u> TVD	<u>6817' (Top)</u> MD
_____	_____	_____
_____	_____	_____
_____	_____	_____

Please insert additional pages as applicable.

GAS TEST Build up Drawdown Open Flow OIL TEST Flow Pump

SHUT-IN PRESSURE Surface 4100 psi Bottom Hole --- psi DURATION OF TEST --- hrs

OPEN FLOW Gas 11,394 mcfpd Oil 14 bpd NGL --- bpd Water 0 bpd GAS MEASURED BY Estimated Orifice Pilot

LITHOLOGY/ FORMATION	TOP	BOTTOM	TOP	BOTTOM	DESCRIBE ROCK TYPE AND RECORD QUANTITY AND TYPE OF FLUID (FRESHWATER, BRINE, OIL, GAS, H ₂ S, ETC)
	DEPTH IN FT NAME TVD	DEPTH IN FT TVD	DEPTH IN FT MD	DEPTH IN FT MD	
	<u>0</u>		<u>0</u>		

*PLEASE SEE ATTACHED EXHIBIT 3

Please insert additional pages as applicable.

Drilling Contractor Precision Drilling Company, LP
Address 2640 Reach Road City Williamsport State PA Zip 17701

Logging Company Rush Wellsite Services
Address 600 Alpha Drive City Canonsburg State PA Zip 15317

Cementing Company Nabors Completion & Production Services, Co.
Address 1650 Hackers Creek City Jane Lew State WV Zip 26378

Stimulating Company US Well Services
Address 533 Industrial Park Drive City Jane Lew State WV Zip 26378

Please insert additional pages as applicable.

Completed by Natalie Komp Telephone 303-357-6820 RECEIVED
Signature  Title Permitting Agent Date 1/20/2016 Office of Oil and Gas

Submittal of Hydraulic Fracturing Chemical Disclosure Information Attach copy of FRACFOCUS Registry

JAN 27 2016
02/12/2016
WV Department of
Environmental Protection

API 47-095-02215 Farm Name Lloyd C. Seckman Well Number Weigle Unit 2H

EXHIBIT 1

Stage No.	Perforation Date	Perforated from MD ft.	Perforated to MD ft.	Number of Perforations	Formations
1	28-Aug-15	17,210	17,378	60	Marcellus
2	16-Oct-15	17,011	17,179	60	Marcellus
3	16-Oct-15	16,812	16,980	60	Marcellus
4	16-Oct-15	16,613	16,781	60	Marcellus
5	16-Oct-15	16,414	16,582	60	Marcellus
6	17-Oct-15	16,215	16,382	60	Marcellus
7	17-Oct-15	16,015	16,183	60	Marcellus
8	17-Oct-15	15,816	15,984	60	Marcellus
9	17-Oct-15	15,617	15,785	60	Marcellus
10	18-Oct-15	15,418	15,586	60	Marcellus
11	18-Oct-15	15,219	15,387	60	Marcellus
12	18-Oct-15	15,020	15,188	60	Marcellus
13	19-Oct-15	14,821	14,989	60	Marcellus
14	19-Oct-15	14,622	14,790	60	Marcellus
15	19-Oct-15	14,423	14,590	60	Marcellus
16	19-Oct-15	14,223	14,391	60	Marcellus
17	20-Oct-15	14,024	14,192	60	Marcellus
18	20-Oct-15	13,825	13,993	60	Marcellus
19	20-Oct-15	13,626	13,794	60	Marcellus
20	20-Oct-15	13,427	13,595	60	Marcellus
21	20-Oct-15	13,228	13,396	60	Marcellus
22	21-Oct-15	13,029	13,197	60	Marcellus
23	21-Oct-15	12,830	12,998	60	Marcellus
24	21-Oct-15	12,631	12,798	60	Marcellus
25	21-Oct-15	12,431	12,599	60	Marcellus
26	22-Oct-15	12,232	12,400	60	Marcellus
27	22-Oct-15	12,033	12,201	60	Marcellus
28	22-Oct-15	11,834	12,002	60	Marcellus
29	22-Oct-15	11,635	11,803	60	Marcellus
30	22-Oct-15	11,436	11,604	60	Marcellus
31	23-Oct-15	11,237	11,405	60	Marcellus
32	23-Oct-15	11,038	11,206	60	Marcellus
33	23-Oct-15	10,839	11,006	60	Marcellus
34	23-Oct-15	10,639	10,807	60	Marcellus
35	24-Oct-15	10,440	10,608	60	Marcellus
36	24-Oct-15	10,241	10,409	60	Marcellus
37	24-Oct-15	10,042	10,210	60	Marcellus
38	24-Oct-15	9,843	10,011	60	Marcellus
39	25-Oct-15	9,644	9,812	60	Marcellus
40	25-Oct-15	9,445	9,613	60	Marcellus
41	25-Oct-15	9,246	9,414	60	Marcellus
42	25-Oct-15	9,047	9,214	60	Marcellus
43	25-Oct-15	8,847	9,015	60	Marcellus
44	26-Oct-15	8,648	8,816	60	Marcellus
45	26-Oct-15	8,449	8,617	60	Marcellus
46	26-Oct-15	8,250	8,418	60	Marcellus
47	26-Oct-15	8,051	8,219	60	Marcellus
48	26-Oct-15	7,852	8,020	60	Marcellus
49	27-Oct-15	7,653	7,821	60	Marcellus
50	27-Oct-15	7,454	7,622	60	Marcellus
51	27-Oct-15	7,255	7,423	60	Marcellus
52	27-Oct-15	7,055	7,223	60	Marcellus
53	27-Oct-15	6,856	7,024	60	Marcellus

RECEIVED
Office of Oil and Gas

JAN 27 2016

WV Department of
Environmental Protection

02/12/2016

EXHIBIT 2

Stage No.	Stimulations Date	Avg Pump Rate	Avg Treatment Pressure (PSI)	Max Breakdown Pressure (PSI)	ISIP (PSI)	Amount of Proppant (lbs)	Amount of Water (bbls)	Amount of Nitrogen/ other (units)
1	15-Oct-15	69.5	7,203	N/A	4,689	252,100	6,843	N/A
2	16-Oct-15	69.8	7,206	5,915	4,742	251,400	6,848	N/A
3	16-Oct-15	70.9	7,103	5,597	4,377	248,300	6,513	N/A
4	16-Oct-15	69.3	7,180	5,418	4,277	253,300	6,799	N/A
5	16-Oct-15	68.5	6,935	5,525	4,832	194,100	7,153	N/A
6	17-Oct-15	71.3	7,159	5,504	4,792	249,900	6,556	N/A
7	17-Oct-15	73.2	7,157	5,811	4,588	248,100	6,508	N/A
8	17-Oct-15	68.1	7,198	5,218	4,517	184,900	7,116	N/A
9	17-Oct-15	69.8	6,837	5,246	4,814	249,800	6,538	N/A
10	18-Oct-15	73.1	7,177	5,085	4,621	249,600	6,492	N/A
11	18-Oct-15	73.6	6,992	5,254	4,649	247,100	6,457	N/A
12	18-Oct-15	72.2	6,946	5,540	4,939	247,200	6,463	N/A
13	19-Oct-15	71.5	6,979	5,114	4,921	252,400	6,535	N/A
14	19-Oct-15	72.2	7,097	5,111	4,545	250,180	6,565	N/A
15	19-Oct-15	71.4	7,076	5,450	4,427	236,670	6,204	N/A
16	19-Oct-15	69.3	7,103	5,114	4,660	250,800	6,455	N/A
17	20-Oct-15	66.4	6,732	5,075	4,624	251,200	6,444	N/A
18	20-Oct-15	68.5	7,115	5,479	4,249	247,450	6,441	N/A
19	20-Oct-15	71.9	6,658	5,537	4,308	249,115	6,333	N/A
20	20-Oct-15	67.7	6,704	5,708	4,184	246,020	6,321	N/A
21	20-Oct-15	68.8	6,855	5,536	4,696	207,000	6,171	N/A
22	21-Oct-15	67.1	6,736	5,440	4,274	217,500	6,893	N/A
23	21-Oct-15	74.8	6,908	5,209	4,106	248,655	6,283	N/A
24	21-Oct-15	72.8	7,104	5,278	4,002	249,600	6,269	N/A
25	21-Oct-15	69.1	6,757	5,400	3,995	250,160	6,400	N/A
26	22-Oct-15	69.5	6,579	5,307	5,075	213,800	6,557	N/A
27	22-Oct-15	75.8	6,785	5,413	4,167	249,755	6,257	N/A
28	22-Oct-15	74.8	6,639	5,517	4,031	250,335	6,231	N/A
29	22-Oct-15	73.2	6,534	5,389	4,760	252,700	6,216	N/A
30	22-Oct-15	73.7	6,795	5,697	4,570	234,720	5,975	N/A
31	23-Oct-15	71.9	6,689	5,518	4,520	240,220	6,209	N/A
32	23-Oct-15	75.4	6,825	5,413	3,903	232,735	6,785	N/A
33	23-Oct-15	69.2	6,651	5,107	4,213	236,380	6,020	N/A
34	23-Oct-15	63.8	6,450	5,350	4,324	109,120	6,423	N/A
35	24-Oct-15	68.6	6,588	5,313	4,360	250,690	6,126	N/A
36	24-Oct-15	67.4	6,309	5,468	3,794	252,450	6,207	N/A
37	24-Oct-15	66.4	6,214	5,824	4,560	250,690	6,194	N/A
38	24-Oct-15	73.3	6,643	6,083	4,581	236,460	6,618	N/A
39	25-Oct-15	71.6	6,676	5,955	4,263	223,640	6,628	N/A
40	25-Oct-15	66.4	6,274	5,507	4,213	251,870	6,069	N/A
41	25-Oct-15	65.8	6,528	5,587	4,184	252,835	6,050	N/A
42	25-Oct-15	68.2	6,340	6,098	4,528	251,020	6,040	N/A
43	25-Oct-15	63.9	7,154	6,080	4,506	102,420	6,565	N/A
44	26-Oct-15	65.2	6,668	5,708	4,892	225,200	6,163	N/A
45	26-Oct-15	67.5	6,609	5,802	4,582	231,320	6,602	N/A
46	26-Oct-15	77.3	7,065	6,722	4,371	228,535	5,747	N/A
47	26-Oct-15	67.0	6,733	6,076	5,833	165,800	6,546	N/A
48	26-Oct-15	70.3	6,332	5,722	4,531	252,700	5,993	N/A
49	27-Oct-15	71.4	6,183	5,912	4,828	233,350	6,542	N/A
50	27-Oct-15	75.7	6,586	6,105	4,098	250,140	5,946	N/A
51	27-Oct-15	76.4	6,285	6,132	4,278	250,785	5,919	N/A
52	27-Oct-15	76.5	6,331	6,112	4,381	251,340	5,922	N/A
53	27-Oct-15	76.7	6,099	5,643	3,741	255,200	6,173	N/A
AVG=		70.6	6,764	5,579	4,470	12,468,760	338,323	TOTAL

RECEIVED
Office of Oil and Gas

OCT 27 2016

WV Department of
Environmental Protection

02/12/2016

EXHIBIT 3

LITHOLOGY/ FORMATION	TOP DEPTH (TVD)	BOTTOM DEPTH (TVD)	TOP DEPTH (MD)	BOTTOM DEPTH (MD)
	From Surface	From Surface	From Surface	From Surface
Fresh Water	256'	N/A	256'	N/A
Fresh Water	267'	N/A	267'	N/A
Siltstone	0	296	0	296
Siltstone w/trace coal	296	316	296	316
Siltstone	316	336	316	336
Sandstone	336	376	336	376
Siltstone w/trace coal	376	466	376	466
Sandstone	466	716	466	716
Sandstone/Siltstone	716	956	716	956
Limestone/Siltstone	956	1,176	956	1,176
Siltstone/Sandstone w/trace coal	1,176	1,216	1,176	1,216
Siltstone	1,216	1,356	1,216	1,356
Sandstone	1,356	1,496	1,356	1,496
Siltstone w/trace coal	1,496	1,516	1,496	1,516
Sandstone/Siltstone	1,516	1,916	1,516	1,916
Sandstone w/trace coal	1,916	1,956	1,916	1,956
Sandstone/Siltstone	1,956	2,109	1,956	2,121
Big Lime	2,109	2,213	2,121	2,226
Big Injun	2,213	2,712	2,226	2,727
Gantz Sand	2,712	2,834	2,727	2,850
Fifty Foot Sandstone	2,834	2,937	2,850	2,953
Gordon	2,937	3,294	2,953	3,310
Fifth Sandstone	3,294	3,338	3,310	3,354
Bayard	3,338	3,692	3,354	3,708
Warren	3,692	4,086	3,708	4,102
Speechley	4,086	4,795	4,102	4,811
Bradford	4,795	5,203	4,811	5,219
Benson	5,203	5,423	5,219	5,452
Alexander	5,423	5,590	5,452	5,606
Elk	5,590	5,989	5,606	6,005
Rhinestreet	5,989	6,309	6,005	6,330
Sycamore	6,309	6,485	6,330	6,531
Middlesex	6,485	6,583	6,531	6,677
Burkett	6,583	6,609	6,677	6,723
Tully	6,609	6,647	6,723	6,817
Marcellus	6,647	NA	6,817	NA

RECEIVED
Office of Oil and Gas

JAN 27 2016

WV Department of
Environmental Protection

02/12/2016

Hydraulic Fracturing Fluid Product Component Information Disclosure

Job Start Date:	10/15/2015
Job End Date:	10/27/2015
State:	West Virginia
County:	Tyler
API Number:	47-095-02215-00-00
Operator Name:	Antero Resources Corporation
Well Name and Number:	Weigle 2H
Longitude:	-80.85899700
Latitude:	39.45203600
Datum:	NAD83
Federal/Tribal Well:	NO
True Vertical Depth:	6,693
Total Base Water Volume (gal):	15,049,238
Total Base Non Water Volume:	0



Hydraulic Fracturing Fluid Composition:

Trade Name	Supplier	Purpose	Ingredients	Chemical Abstract Service Number (CAS #)	Maximum Ingredient Concentration in Additive (% by mass)**	Maximum Ingredient Concentration in HF Fluid (% by mass)**	Comments
Water	Antero Resources	Base Fluid	Water	7732-18-5	100.00000	90.56504	
Sand	U.S. Well Services, LLC	Proppant	Crystalline Silica, quartz	14808-60-7	100.00000	8.99712	
HCL Acid (12.6%-18.0%)	U.S. Well Services, LLC	Bulk Acid	Water	7732-18-5	87.50000	0.15781	
			Hydrogen Chloride	7647-01-0	18.00000	0.03770	
LGC-15	U.S. Well Services	Gelling Agents	Guar Gum	9000-30-0	50.00000	0.06959	
			Petroleum Distillates	64742-47-8	60.00000	0.06590	
			Suspending agent (solid)	14808-60-7	3.00000	0.01064	
			Surfactant	68439-51-0	3.00000	0.00418	
WFRA-405	U.S. Well Services	Friction Reducer	Water	7732-18-5	40.00000	0.02598	
			2-Propenoic acid, polymer with 2-propenamide	9003-06-9	30.00000	0.02598	
			Petroleum Distillates	64742-47-8	20.00000	0.01046	
			Ethoxylated alcohol blend	68002-97-1	4.00000	0.00325	
SI-1100	U.S. Well Services	Scale Inhibitor					

			Water	7732-18-5	80.00000	0.00981
			Ethylene Glycol	107-21-1	25.00000	0.00346
			Copolymer of Maleic and Acrylic acid	52255-49-9	10.00000	0.00145
			Potassium salt of diethylene triamine penta (methylene phosphonic acid)	15827-60-8	7.50000	0.00124
			Phosphino carboxylic acid polymer	71050-62-9	5.00000	0.00080
			Hexamethylene triamine penta (methylene phosphonic acid)	34690-00-1	5.00000	0.00080
			Hexamethylene diamine penta (methylene phosphonic acid)	23605-74-5	2.00000	0.00032
K-BAC 1020	U.S. Well Services	Anti-Bacterial Agent				
			2,2-dibromo-3-nitrilopropionamide	10222-01-2	20.00000	0.00406
			Deionized Water	7732-18-5	28.00000	0.00232
AP One	U.S. Well Services	Gel Breakers				
			Ammonium Persulfate	7727-54-0	100.00000	0.00181
AI-301	U.S. Well Services	Acid Corrosion Inhibitors				
			Diethylene Glycol	111-46-6	30.00000	0.00012
			Methenamine	100-97-0	20.00000	0.00010
			Hydrogen Chloride	7647-01-0	10.00000	0.00004
			Polyethylene polyamine	68603-67-8	10.00000	0.00004
			Coco amine	61791-14-8	5.00000	0.00002

Ingredients shown above are subject to 29 CFR 1910.1200(i) and appear on Material Safety Data Sheets (MSDS). Ingredients shown below are Non-MSDS.

* Total Water Volume sources may include fresh water, produced water, and/or recycled water

** Information is based on the maximum potential for concentration and thus the total may be over 100%

Note: For Field Development Products (products that begin with FDP), MSDS level only information has been provided.

Ingredient information for chemicals subject to 29 CFR 1910.1200(i) and Appendix D are obtained from suppliers Material Safety Data Sheets (MSDS)

RECEIVED
Office of Oil and Gas
JAN 27 2016
WV Department of
Environmental Protection

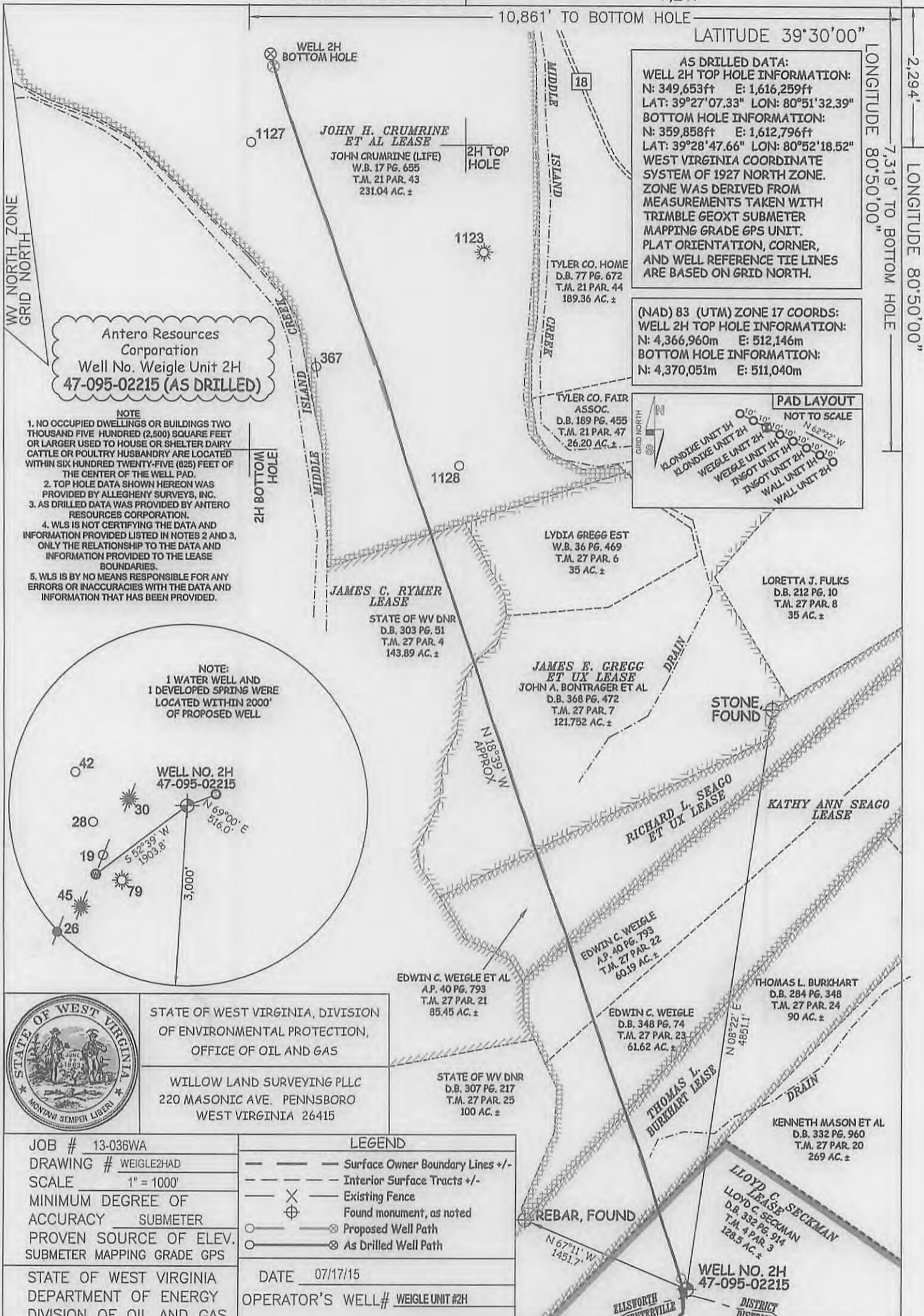
LATITUDE 39°27'30"

7,247'

10,861' TO BOTTOM HOLE

LATITUDE 39°30'00"

LONGITUDE 80°50'00" TO BOTTOM HOLE
LONGITUDE 80°50'00"



Antero Resources Corporation
Well No. Weigle Unit 2H
47-095-02215 (AS DRILLED)

- NOTE**
1. NO OCCUPIED DWELLINGS OR BUILDINGS TWO THOUSAND FIVE HUNDRED (2,500) SQUARE FEET OR LARGER USED TO HOUSE OR SHELTER DAIRY CATTLE OR POULTRY HUSBANDRY ARE LOCATED WITHIN SIX HUNDRED TWENTY-FIVE (625) FEET OF THE CENTER OF THE WELL PAD.
 2. TOP HOLE DATA SHOWN HEREON WAS PROVIDED BY ALLEGHENY SURVEYS, INC.
 3. AS DRILLED DATA WAS PROVIDED BY ANTERO RESOURCES CORPORATION.
 4. WLS IS NOT CERTIFYING THE DATA AND INFORMATION PROVIDED LISTED IN NOTES 2 AND 3, ONLY THE RELATIONSHIP TO THE DATA AND INFORMATION PROVIDED TO THE LEASE BOUNDARIES.
 5. WLS IS BY NO MEANS RESPONSIBLE FOR ANY ERRORS OR INACCURACIES WITH THE DATA AND INFORMATION THAT HAS BEEN PROVIDED.



STATE OF WEST VIRGINIA, DIVISION OF ENVIRONMENTAL PROTECTION, OFFICE OF OIL AND GAS
WILLOW LAND SURVEYING PLLC
220 MASONIC AVE. PENNSBORO WEST VIRGINIA 26415

STATE OF WV DNR
D.B. 307 PG. 217
T.M. 27 PAR. 25
100 AC. ±

JOB # 13-036WA
DRAWING # WEIGLE2HAD
SCALE 1" = 1000'
MINIMUM DEGREE OF ACCURACY SUBMETER
PROVEN SOURCE OF ELEV. SUBMETER MAPPING GRADE GPS
STATE OF WEST VIRGINIA DEPARTMENT OF ENERGY DIVISION OF OIL AND GAS

LEGEND	
---	Surface Owner Boundary Lines +/-
---	Interior Surface Tracts +/-
X	Existing Fence
⊕	Found monument, as noted
○	Proposed Well Path
⊗	As Drilled Well Path
DATE 07/17/15	
OPERATOR'S WELL# WEIGLE UNIT #2H	

WELL TYPE: OIL GAS LIQUID INJECTION WASTE DISPOSAL 47 - 095 - 02215
 (IF "GAS") PRODUCTION STORAGE DEEP SHALLOW STATE COUNTY PERMIT
 LOCATION: ELEVATION 1,216' ORIGINAL - 1,201' AS DRILLED WATERSHED OUTLET MIDDLE ISLAND CREEK QUADRANGLE SHIRLEY 7.5' DISTRICT ELLSWORTH COUNTY TYLER
 SURFACE OWNER LLOYD C. SECKMAN ACREAGE 128.5 ACRES +/- LEASE ACREAGE 128.5 ACRES ±; 90 ACRES ±; 129.2 ACRES ±
 OIL & GAS ROYALTY OWNER LLOYD C. SECKMAN; THOMAS L. BURKHART; KATHY ANN SEAGO; RICHARD L. SEAGO ET UX; JAMES E. GREGG ET UX; JAMES C. RYMER; JOHN H. CRUMRINE ET AL 74.2 AC ±; 141 AC ±; 143.89 AC ±; 256 AC ±
 PROPOSED WORK: DRILL CONVERT DRILL DEEPER REDRILL FRACTURE OR STIMULATE
 PLUG OFF OLD FORMATION PERFORATE NEW FORMATION OTHER PHYSICAL CHANGE IN WELL (SPECIFY) (X) AS DRILLED
 TARGET FORMATION MARCELLUS ESTIMATED DEPTH 6,687' TVD 17,469' MD
 WELL OPERATOR ANTERO RESOURCES CORP. DESIGNATED AGENT DIANNA STAMPER - CT CORPORATION SYSTEM
 ADDRESS 1615 WYNKOOP STREET ADDRESS 5400 D BIG TYLER ROAD
 DENVER, CO 80202 CHARLESTON, WV 25313

02/12/2016



Antero Resources
1615 Wynkoop Street
Denver, CO 80202
Office 303.357.7310
Fax 303.357.7315

January 21, 2016

West Virginia Department of Environmental Protection
Office of Oil and Gas
Attn: John Kearney
601 57th Street
Charleston, WV 25304

Mr. Kearney:

Please find enclosed the Well Operator's Report of Well Work, Form WR-35 (including the Directional Survey and FracFocus report) and Discharge Monitoring Report Form WR-34 for the following wells:

- Wall Unit 1H (API# 47-095-02202) – Pierpoint Pad
- Wall Unit 2H (API# 47-095-02203) – Pierpoint Pad
- Weigle Unit 2H (API# 47-095-02215) – Pierpoint Pad

The As-Drilled Survey Plat and corresponding logs for these wells were submitted with the INTERIM Well Operator's Report of Well Work on October 30, 2015.

If you have any questions please feel free to contact me at (303) 357-6820.

Sincerely,

A handwritten signature in blue ink that reads "Natalie Komp".

Natalie Komp
Permitting Representative
Antero Resources Corporation

RECEIVED
Office of Oil and Gas

JAN 27 2016

WV Department of
Environmental Protection

Enclosures

02/12/2016

*Antero is submitting an "Interim" Form WR-35 showing the well work that has been completed to date. This well has been drilled to TD, but is waiting on completion operations, which are currently deferred at this time. We will follow up with the "Final" Form WR-35 & WR-34 within 90 days of completion.

WR-35
Rev. 8/23/13

Page ___ of ___

PM

State of West Virginia
Department of Environmental Protection - Office of Oil and Gas
Well Operator's Report of Well Work

API 47-095-02215 County Tyler District Ellsworth
Quad Shirley 7.5' Pad Name Pierpoint Pad Field/Pool Name ----
Farm name Lloyd C. Seckman Well Number Weigle Unit 2H
Operator (as registered with the OOG) Antero Resources Corporation
Address 1615 Wynkoop Street City Denver State CO Zip 80202

As Drilled location NAD 83/UTM Attach an as-drilled plat, profile view, and deviation survey
Top hole Northing 4,366,960m Easting 512,146m
Landing Point of Curve Northing 4,366,960.80m Easting 512,137.94m
Bottom Hole Northing 4,370,051m Easting 511,040m

Elevation (ft) 1201' GL Type of Well New Existing Type of Report Interim Final
Permit Type Deviated Horizontal Horizontal 6A Vertical Depth Type Deep Shallow
Type of Operation Convert Deepen Drill Plug Back Redrilling Rework Stimulate
Well Type Brine Disposal CBM Gas Oil Secondary Recovery Solution Mining Storage Other _____
Type of Completion Single Multiple Fluids Produced Brine Gas NGL Oil Other _____
Drilled with Cable Rotary

Drilling Media Surface hole Air Mud Fresh Water Intermediate hole Air Mud Fresh Water Brine
Production hole Air Mud Fresh Water Brine
Mud Type(s) and Additive(s)
Air- Foam & 4% KCL
Mud- Polymer

Date permit issued 1/15/2015 Date drilling commenced 1/23/2015 Date drilling ceased 5/21/2015
Date completion activities began WOC Date completion activities ceased WOC
Verbal plugging (Y/N) N/A Date permission granted N/A Granted by N/A

Please note: Operator is required to submit a plugging application within 5 days of verbal permission to plug

RECEIVED
Office of Oil and Gas

Freshwater depth(s) ft 256', 267' Open mine(s) (Y/N) depths No
Salt water depth(s) ft 889', 2253' Void(s) encountered (Y/N) depths None
Coal depth(s) ft None Cavern(s) encountered (Y/N) depths None
Is coal being mined in area (Y/N) No

NOV 02 2015
WV Department of
Environmental Protection
Reviewed by:

MDC
12-02/15/2016

API 47-095 - 02215 Farm name Lloyd C. Seckman Well number Weigle Unit 2H

CASING STRINGS	Hole Size	Casing Size	Depth	New or Used	Grade wt/ft	Basket Depth(s)	Did cement circulate (Y/ N) * Provide details below*
Conductor	24"	20"	40'	New	94#; H-40	N/A	Yes
Surface	17 1/2"	13 3/8"	479'	New	48#; J-55	N/A	Yes
Coal							
Intermediate 1	12 1/4"	9 5/8"	2541'	New	36#; J-55	N/A	Yes
Intermediate 2							
Intermediate 3							
Production	8 3/4" & 8 1/2"	5 1/2"	17,469'	New	23#; P-110	N/A	Yes
Tubing							
Packer type and depth set		N/A					

Comment Details _____

CEMENT DATA	Class/Type of Cement	Number of Sacks	Slurry wt (ppg)	Yield (ft ³ /sks)	Volume (ft ³)	Cement Top (MD)	WOC (hrs)
Conductor	Class A	200 sx	15.60	1.18	38 Cu. Ft.	0'	8 Hrs.
Surface	Class A	617 sx	15.60	1.18	333 Cu. Ft.	0'	8 Hrs.
Coal							
Intermediate 1	Class A	877 sx	15.20	1.86	796 Cu. Ft.	0'	8 Hrs.
Intermediate 2							
Intermediate 3							
Production	Class H	1017 sx (Lead); 1648 sx (Tail)	14.5 (Lead); 15.2 (Tail)	1.3 (Lead); 1.85 (Tail)	3535 Cu. Ft.	-500' into Intermediate Casing	8 Hrs.
Tubing							

Drillers TD (ft) 17,469' MD; 6687' TVD (BHL) Loggers TD (ft) 17,420'
 Deepest formation penetrated Marcellus Shale Plug back to (ft) N/A
 Plug back procedure N/A

Kick off depth (ft) 6190' **Logs will be submitted with FINAL Completion Report Form WR-35

Check all wireline logs run caliper density deviated/directional induction
 neutron resistivity gamma ray temperature sonic

Well cored Yes No Conventional Sidewall Were cuttings collected Yes No

DESCRIBE THE CENTRALIZER PLACEMENT USED FOR EACH CASING STRING _____

Conductor- 0
 Surface- 1 above guide shoe, 1 above insert float, 1 every 4th joint to surface
 Intermediate- 1 above float joint, 1 above float collar, 1 every 4th joint to surface
 Production- 1 above float joint, 1 below float collar, 1 every 3rd joint to top of cement

WAS WELL COMPLETED AS SHOT HOLE Yes No DETAILS N/A - WOC

WAS WELL COMPLETED OPEN HOLE? Yes No DETAILS N/A - WOC

WERE TRACERS USED Yes No TYPE OF TRACER(S) USED N/A - WOC

RECEIVED
Office of Oil and Gas
NOV 02 2015
WV Department of
Environmental Protection
02/12/2016

API 47- 095 - 02215 Farm name Lloyd C. Seckman Well number Weigle Unit 2H

PERFORATION RECORD

Stage No.	Perforation date	Perforated from MD ft.	Perforated to MD ft.	Number of Perforations	Formation(s)
WELL IS WAITING ON COMPLETION Information will be updated on FINAL WR-35 once completed					

Please insert additional pages as applicable.

STIMULATION INFORMATION PER STAGE

Complete a separate record for each stimulation stage.

Stage No.	Stimulations Date	Ave Pump Rate (BPM)	Ave Treatment Pressure (PSI)	Max Breakdown Pressure (PSI)	ISIP (PSI)	Amount of Proppant (lbs)	Amount of Water (bbls)	Amount of Nitrogen/other (units)
WELL IS WAITING ON COMPLETION Information will be updated on FINAL WR-35 once completed								

Please insert additional pages as applicable.

RECEIVED
 Office of Oil and Gas
 NOV 02 2015
 WV Department of Environmental Protection
 02/12/2016

API 47- 095 - 02215 Farm name Lloyd C. Seckman Well number Weigle Unit 2H

<u>PRODUCING FORMATION(S)</u>	<u>DEPTHS</u>		
<u>Marcellus</u>	<u>6647' (Top)</u>	<u>TVD</u>	<u>6817' (Top)</u> <u>MD</u>
_____	_____	_____	_____
_____	_____	_____	_____

Please insert additional pages as applicable.

GAS TEST Build up Drawdown Open Flow OIL TEST Flow Pump

SHUT-IN PRESSURE Surface _____ psi Bottom Hole _____ psi DURATION OF TEST _____ hrs

OPEN FLOW Gas _____ mcfpd Oil _____ bpd NGL _____ bpd Water _____ bpd GAS MEASURED BY Estimated Orifice Pilot

LITHOLOGY/ FORMATION	TOP DEPTH IN FT NAME TVD	BOTTOM DEPTH IN FT TVD	TOP DEPTH IN FT MD	BOTTOM DEPTH IN FT MD	DESCRIBE ROCK TYPE AND RECORD QUANTITY AND TYPE OF FLUID (FRESHWATER, BRINE, OIL, GAS, H ₂ S, ETC)
	0		0		
* PLEASE SEE ATTACHED EXHIBIT 3					

Please insert additional pages as applicable.

Drilling Contractor Precision Drilling Company, LP
Address 2640 Reach Road City Williamsport State PA Zip 17701

Logging Company _____
Address _____ City _____ State _____ Zip _____

Cementing Company Nabors Completion & Production Services Co. (bought Superior)
Address 1650 Hackers Creek City Jane Lew State WV Zip 26378

Stimulating Company _____
Address _____ City _____ State _____ Zip _____

Please insert additional pages as applicable.

Completed by Natalie Komp Telephone 303-357-6820
Signature  Title Permitting Agent Date 10/27/2015

Submittal of Hydraulic Fracturing Chemical Disclosure Information* Attach copy of FRACFOCUS Registry*
WV Department of Environmental Protection **02/12/2016**

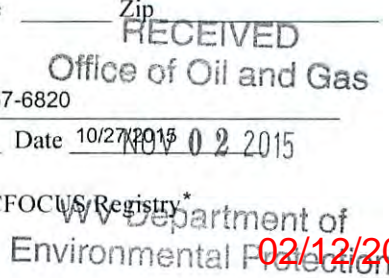


EXHIBIT 3

LITHOLOGY/ FORMATION	TOP DEPTH (TVD) From Surface	BOTTOM DEPTH (TVD) From Surface	TOP DEPTH (MD) From Surface	BOTTOM DEPTH (MD) From Surface
Fresh Water	256'	N/A	256'	N/A
Fresh Water	267'	N/A	267'	N/A
Siltstone	0	296	0	296
Siltstone w/trace coal	est 296	316	est 296	316
Siltstone	est 316	336	est 316	336
Sandstone	est 336	376	est 336	376
Siltstone w/trace coal	est 376	466	est 376	466
Sandstone	est 466	716	est 466	716
Sandstone/Siltstone	est 716	956	est 716	956
Limestone/Siltstone	est 956	1,176	est 956	1,176
Siltstone/Sandstone w/trace coal	est 1176	1,216	est 1176	1,216
Siltstone	est 1216	1,356	est 1216	1,356
Sandstone	est 1356	1,496	est 1356	1,496
Siltstone w/trace coal	est 1496	1,516	est 1496	1,516
Sandstone/Siltstone	est 1516	1,916	est 1516	1,916
Sandstone w/trace coal	est 1916	1,956	est 1916	1,956
Sandstone/Siltstone	est 1956	2,109	est 1956	2,121
Big Lime	2,109	2,213	2,121	2,226
Big Injun	2,213	2,712	2,226	2,727
Gantz Sand	2,712	2,834	2,727	2,850
Fifty Foot Sandstone	2,834	2,937	2,850	2,953
Gordon	2,937	3,294	2,953	3,310
Fifth Sandstone	3,294	3,338	3,310	3,354
Bayard	3,338	3,692	3,354	3,708
Warren	3,692	4,086	3,708	4,102
Speechley	4,086	4,795	4,102	4,811
Bradford	4,795	5,203	4,811	5,219
Benson	5,203	5,423	5,219	5,452
Alexander	5,423	5,590	5,452	5,606
Elk	5,590	5,989	5,606	6,005
Rhinestreet	5,989	6,309	6,005	6,330
Sycamore	6,309	6,485	6,330	6,531
Middlesex	6,485	6,583	6,531	6,677
Burkett	6,583	6,609	6,677	6,723
Tully	6,609	6,647	6,723	6,817
Marcellus	6,647	NA	6,817	NA

*Please note Antero determines shallow formation tops based on mud logs that are only run on one well on a multi-well pad. The measured depth (MD) data on subsequent wells may be slightly different due to the well's unique departure.

RECEIVED
Office of Oil and Gas

NOV 02 2015

WV Department of
Environmental Protection



Weigle Unit 2H
Tyler County WW
Northing: 14326552.31
Easting: 1680219.07
As Drilled



WELL DETAILS Weigle Unit 2H
 Ground Level: 1201.0
 +N/-S +E/-W Northing Easting Longitude
 0.0 0.0 14326552.31 1680219.07 39° 27' 7.325" N 80° 51' 32.395" W

Genie Lightfoot
 15.23, June 01 2015
 Scientific Drilling
 11220 NW 10th St
 Yukon, OK 73099

PROJECT DETAILS: Tyler County WW
 Geodetic System: Universal Transverse Mercator (US Survey Feet)
 Datum: NAD 1927 (NADCON CONUS)
 Ellipsoid: Clarke 1866
 Zone: 17N (84 W to 78 W)
 System Datum: Mean Sea Level

SITE DETAILS:
 Pierpoint Padington/Kondike/Wall/Weigle
 Site Centre Northing: 14326547.37
 Easting: 1680227.52
 Positional Uncertainty: 0.0
 Convergence: 0.09
 Local North: Grid

LEGEND

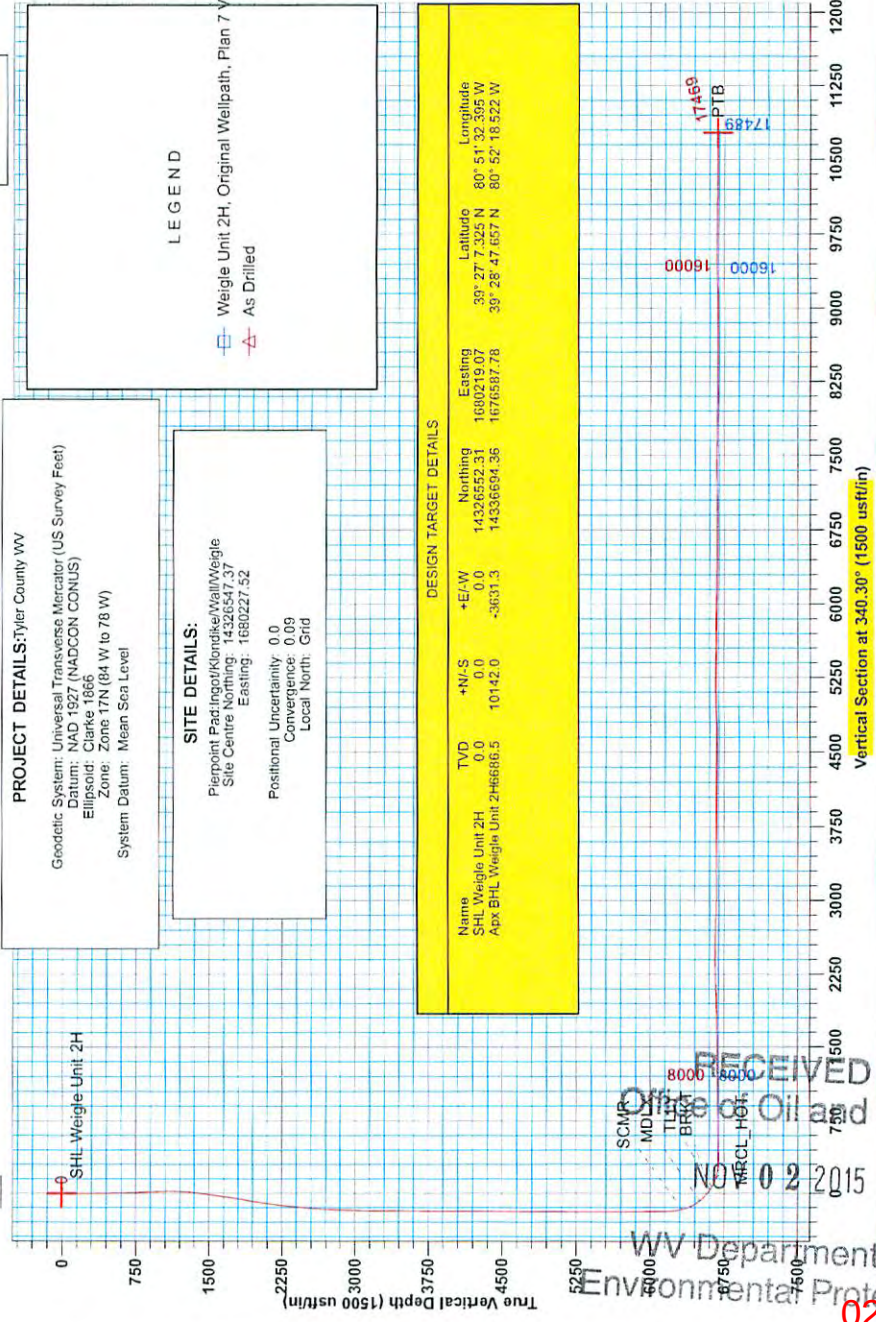
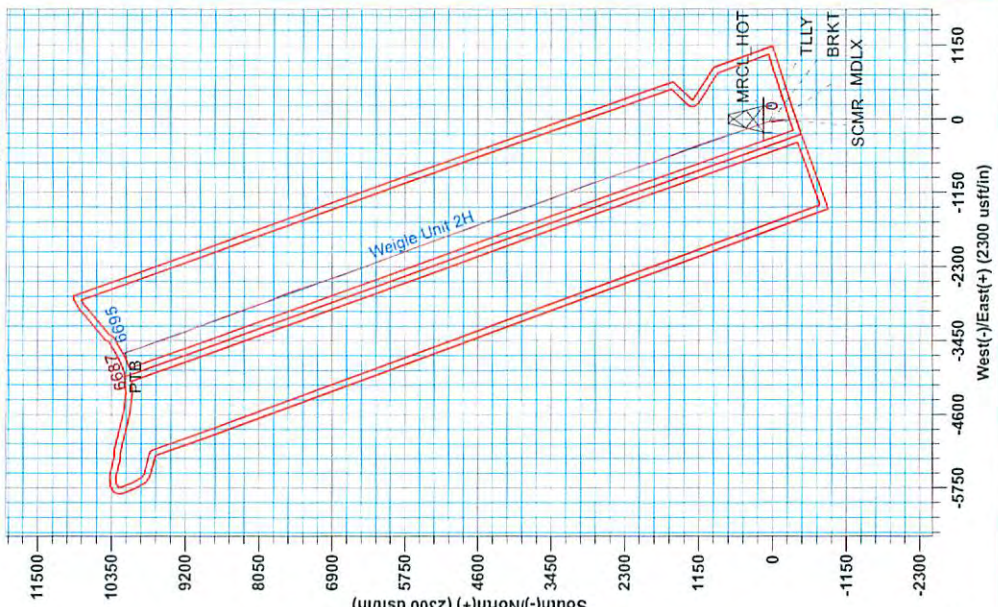
- Weigle Unit 2H, Original Wellpath, Plan 7V0
- As Drilled

DESIGN TARGET DETAILS

Name	TVD	+N/-S	+E/-W	Northing	Easting	Longitude
SHL Weigle Unit 2H	0.0	0.0	0.0	14326552.31	1680219.07	80° 51' 32.395" W
App. BHL Weigle Unit 2H	666.5	10142.0	+3631.3	14336694.36	1676587.78	80° 52' 18.522" W

Azimuths to Grid North
 True North: -0.09°
 Magnetic North: -8.85°
 Magnetic Field
 Strength: 52234.66 nT
 Declination: 8.93°
 Date: 5/4/2015
 Model: BGGN2014

To convert Magnetic North to Grid, Subtract 8.93°
 To convert True North to Grid, Subtract 0.09°



RECEIVED
 Office of Oil and Gas
 NOV 02 2015

WV Department of
 Environmental Protection

02/12/2016



Antero

Tyler County WV
Pierpoint Pad: Ingot/Klondike/Wall/Weigle
Weigle Unit 2H
Original Wellpath

Design: As Drilled

EOW Completion Report

01 June, 2015



Scientific Drilling

RECEIVED
Office of Oil and Gas

NOV 02 2015

02/12/2016

WV Department of
Environmental Protection



EOW Completion Report



Company:	Antero	Local Co-ordinate Reference:	Well Weigle Unit 2H
Project:	Tyler County WV	TVD Reference:	Precision 525: GL 1201' + KB 19' @ 1220.0usft
Site:	Pierpoint Pad:Ingot/Klondike/Wall/Weigle	MD Reference:	Precision 525: GL 1201' + KB 19' @ 1220.0usft
Well:	Weigle Unit 2H	North Reference:	Grid
Wellbore:	Original Wellpath	Survey Calculation Method:	Minimum Curvature
Design:	As Drilled	Database:	Oklahoma District

Project	Tyler County WV, Tyler Co West Virginia		
Map System:	Universal Transverse Mercator (US Survey Feet)	System Datum:	Mean Sea Level
Geo Datum:	NAD 1927 (NADCON CONUS)		
Map Zone:	Zone 17N (84 W to 78 W)		

Site	Pierpoint Pad:Ingot/Klondike/Wall/Weigle				
Site Position:	Northing:	14,326,547.37 usft	Latitude:	39° 27' 7.276 N	
From: Map	Easting:	1,680,227.52 usft	Longitude:	80° 51' 32.288 W	
Position Uncertainty:	0.0 usft	Slot Radius:	13-3/16"	Grid Convergence:	0.09 °

Well	Weigle Unit 2H, Marcellus					
Well Position	+N/-S	0.0 usft	Northing:	14,326,552.31 usft	Latitude:	39° 27' 7.325 N
	+E/-W	0.0 usft	Easting:	1,680,219.07 usft	Longitude:	80° 51' 32.395 W
Position Uncertainty	2.0 usft		Wellhead Elevation:	1,220.0 usft	Ground Level:	1,201.0 usft

Wellbore	Original Wellpath		
-----------------	-------------------	--	--

Magnetics	Model Name	Sample Date	Declination (°)	Dip Angle (°)	Field Strength (nT)
	BGGM2014	5/4/2015	-8.46	66.93	52,235

Design	As Drilled		
---------------	------------	--	--

Audit Notes:					
Version:	1.0	Phase:	ACTUAL	Tie On Depth:	0.0
Vertical Section:	Depth From (TVD) (usft)	+N/-S (usft)	+E/-W (usft)	Direction (°)	
	0.0	0.0	0.0	340.30	

Survey Program	Date	6/1/2015			
From (usft)	To (usft)	Survey (Wellbore)	Tool Name	Description	
106.5	5,896.4	Survey #6 Final Gyro KOP (Original Wellp	Standard Keeper 104	Standard Wireline Keeper ver 1.0.4	
5,896.4	17,469.0	Survey #7 SDI MWD (Original Wellpath)	SDI MWD	Scientific Drilling Intl. MWD - Standard ver 1.0.1	

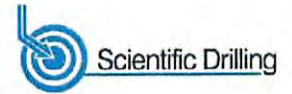
MD (usft)	Inc (°)	Azi (azimuth) (°)	TVD (usft)	N/S (usft)	E/W (usft)	V. Sec (usft)	DLeg (°/100usft)
0.0	0.00	0.00	0.0	0.0	0.0	0.0	0.00
106.5	0.15	112.59	106.5	-0.1	0.1	-0.1	0.14
130.7	0.16	115.24	130.7	-0.1	0.2	-0.1	0.05
155.6	0.20	97.00	155.6	-0.1	0.3	-0.2	0.28
181.0	0.18	100.33	181.0	-0.1	0.3	-0.2	0.09
204.8	0.17	107.13	204.8	-0.1	0.4	-0.3	0.10
230.0	0.20	105.19	230.0	-0.2	0.5	-0.3	0.12
255.4	0.20	97.14	255.4	-0.2	0.6	-0.4	0.05
280.6	0.24	86.73	280.6	-0.2	0.7	-0.4	0.22
304.4	0.24	104.77	304.4	-0.2	0.8	-0.4	0.32
329.9	0.15	111.99	329.9	-0.2	0.9	-0.5	0.36

RECEIVED
Office of Oil and Gas
NOV 02 2015

WV Department of Environmental Protection
COMPASS 5000.1 Build 74
02/12/2016



EOW Completion Report



Company: Antero	Local Co-ordinate Reference: Well Weigle Unit 2H
Project: Tyler County WV	TVD Reference: Precision 525: GL 1201' + KB 19' @ 1220.0usft
Site: Pierpoint Pad:Ingot/Klondike/Wall/Weigle	MD Reference: Precision 525: GL 1201' + KB 19' @ 1220.0usft
Well: Weigle Unit 2H	North Reference: Grid
Wellbore: Original Wellpath	Survey Calculation Method: Minimum Curvature
Design: As Drilled	Database: Oklahoma District

Survey									
MD (usft)	Inc (°)	Azi (azimuth) (°)	TVD (usft)	N/S (usft)	E/W (usft)	V. Sec (usft)	DLeg (°/100usft)		
355.0	0.35	107.31	355.0	-0.2	1.0	-0.6	0.80		
380.5	0.17	80.64	380.5	-0.3	1.1	-0.6	0.83		
405.5	0.16	97.05	405.5	-0.3	1.1	-0.6	0.19		
430.6	0.07	295.67	430.6	-0.3	1.2	-0.6	0.91		
455.8	0.10	104.36	455.8	-0.3	1.2	-0.6	0.67		
480.5	0.12	234.74	480.5	-0.3	1.2	-0.7	0.81		
503.8	0.68	266.79	503.8	-0.3	1.0	-0.6	2.49		
530.3	1.08	283.52	530.3	-0.2	0.6	-0.4	1.78		
554.0	1.50	278.60	554.0	-0.1	0.1	-0.2	1.83		
578.8	2.12	278.90	578.8	0.0	-0.7	0.2	2.50		
605.1	2.78	277.53	605.1	0.1	-1.8	0.7	2.52		
629.4	3.20	277.76	629.4	0.3	-3.1	1.3	1.73		
655.9	4.00	279.01	655.8	0.5	-4.7	2.1	3.03		
679.6	4.75	279.81	679.4	0.8	-6.5	3.0	3.17		
703.6	5.19	282.16	703.3	1.2	-8.5	4.0	2.03		
729.9	5.39	283.25	729.5	1.8	-10.9	5.3	0.85		
753.8	5.47	283.51	753.3	2.3	-13.1	6.6	0.35		
780.3	5.52	283.20	779.6	2.9	-15.6	8.0	0.22		
803.9	5.60	283.62	803.2	3.4	-17.8	9.2	0.38		
829.9	5.60	284.00	829.0	4.0	-20.2	10.6	0.14		
855.9	5.77	283.48	854.9	4.6	-22.7	12.0	0.68		
879.1	5.74	283.86	878.0	5.2	-25.0	13.3	0.21		
905.0	5.87	283.40	903.8	5.8	-27.6	14.7	0.53		
931.0	5.86	282.95	929.6	6.4	-30.1	16.2	0.18		
954.2	5.97	280.38	952.7	6.9	-32.5	17.4	1.23		
980.1	5.99	278.98	978.4	7.3	-35.1	18.8	0.57		
1,003.6	6.00	277.26	1,001.8	7.7	-37.6	19.9	0.77		
1,028.6	5.39	269.36	1,026.7	7.8	-40.0	20.9	3.96		
1,055.0	4.83	263.85	1,053.0	7.7	-42.4	21.5	2.81		
1,078.2	4.43	258.25	1,076.1	7.4	-44.2	21.9	2.61		
1,104.2	3.96	248.85	1,102.0	6.9	-46.0	22.0	3.20		
1,130.4	3.69	238.62	1,128.2	6.1	-47.6	21.8	2.79		
1,153.9	3.33	224.62	1,151.6	5.2	-48.7	21.4	3.96		
1,179.7	3.37	209.44	1,177.4	4.1	-49.6	20.5	3.43		
1,205.4	3.67	193.59	1,203.0	2.6	-50.2	19.4	3.94		
1,228.8	4.08	181.69	1,226.4	1.0	-50.4	18.0	3.85		
1,254.6	4.73	174.62	1,252.1	-0.9	-50.3	16.1	3.28		
1,279.7	5.28	168.66	1,277.1	-3.1	-50.0	13.9	3.01		
1,305.7	6.17	163.95	1,303.0	-5.6	-49.4	11.4	3.87		
1,328.9	6.57	163.47	1,326.1	-8.1	-48.7	8.8	1.74		
1,354.7	7.01	162.02	1,351.7	-11.0	-47.8	5.7	1.83		
1,380.6	7.48	160.34	1,377.4	-14.1	-46.7	2.5	1.99		
1,403.7	7.67	160.41	1,400.3	-17.0	-45.7	-0.6	0.82		
1,429.6	7.80	160.32	1,425.9	-20.2	-44.5	-4.1	0.50		

RECEIVED
 Office of Oil and Gas
 NOV 02 2015
 WV Department of Environmental Protection
 COMPASS 5000.1 Build 74
 02/12/2016



EOW Completion Report



Company:	Antero	Local Co-ordinate Reference:	Well Weigle Unit 2H
Project:	Tyler County WV	TVD Reference:	Precision 525: GL 1201' + KB 19' @ 1220.0usft
Site:	Pierpoint Pad:Ingot/Klondike/Wall/Weigle	MD Reference:	Precision 525: GL 1201' + KB 19' @ 1220.0usft
Well:	Weigle Unit 2H	North Reference:	Grid
Wellbore:	Original Wellpath	Survey Calculation Method:	Minimum Curvature
Design:	As Drilled	Database:	Oklahoma District

Survey								
MD (usft)	Inc (°)	Azi (azimuth) (°)	TVD (usft)	N/S (usft)	E/W (usft)	V. Sec (usft)	DLeg (°/100usft)	
1,455.4	7.87	160.61	1,451.5	-23.6	-43.3	-7.6	0.31	
1,478.8	7.90	160.48	1,474.6	-26.6	-42.3	-10.8	0.15	
1,504.5	8.06	160.58	1,500.1	-30.0	-41.1	-14.4	0.62	
1,530.4	8.18	160.67	1,525.8	-33.4	-39.9	-18.0	0.47	
1,553.7	8.20	160.71	1,548.8	-36.5	-38.8	-21.3	0.09	
1,579.5	8.25	160.41	1,574.4	-40.0	-37.5	-25.0	0.25	
1,605.8	7.82	163.88	1,600.4	-43.5	-36.4	-28.7	2.47	
1,629.1	7.89	164.70	1,623.4	-46.6	-35.5	-31.9	0.57	
1,654.2	8.02	166.29	1,648.4	-50.0	-34.7	-35.3	1.02	
1,679.6	8.54	170.38	1,673.4	-53.5	-33.9	-39.0	3.10	
1,705.0	8.69	171.25	1,698.6	-57.3	-33.3	-42.7	0.78	
1,730.4	8.90	171.76	1,723.7	-61.1	-32.8	-46.5	0.88	
1,755.7	8.91	171.17	1,748.7	-65.0	-32.2	-50.3	0.36	
1,780.9	9.06	171.37	1,773.6	-68.9	-31.6	-54.2	0.61	
1,803.9	9.17	171.49	1,796.3	-72.5	-31.0	-57.8	0.49	
1,829.1	9.36	171.00	1,821.2	-76.5	-30.4	-61.8	0.82	
1,854.4	9.48	170.83	1,846.1	-80.6	-29.8	-65.8	0.49	
1,880.2	9.50	170.62	1,871.5	-84.8	-29.1	-70.0	0.16	
1,905.6	9.63	170.74	1,896.6	-88.9	-28.4	-74.2	0.52	
1,930.9	9.79	170.63	1,921.6	-93.2	-27.7	-78.4	0.63	
1,953.6	9.81	170.75	1,943.9	-97.0	-27.1	-82.2	0.13	
1,979.0	9.85	171.32	1,968.9	-101.3	-26.4	-86.4	0.41	
2,004.8	9.46	172.69	1,994.4	-105.5	-25.8	-90.7	1.75	
2,030.1	8.96	176.62	2,019.4	-109.6	-25.4	-94.6	3.17	
2,055.3	8.95	177.62	2,044.3	-113.5	-25.2	-98.4	0.62	
2,078.7	9.09	178.07	2,067.4	-117.2	-25.1	-101.8	0.67	
2,104.0	9.34	177.61	2,092.4	-121.2	-24.9	-105.7	1.03	
2,129.2	9.54	178.12	2,117.2	-125.3	-24.8	-109.6	0.86	
2,154.7	9.54	177.68	2,142.3	-129.6	-24.6	-113.7	0.29	
2,180.0	9.00	176.53	2,167.3	-133.6	-24.4	-117.6	2.25	
2,205.4	8.41	176.22	2,192.4	-137.5	-24.2	-121.3	2.33	
2,230.7	7.47	177.23	2,217.4	-140.9	-24.0	-124.6	3.76	
2,256.0	6.65	178.60	2,242.5	-144.1	-23.9	-127.6	3.31	
2,279.0	6.13	178.30	2,265.4	-146.6	-23.8	-130.0	2.27	
2,304.3	5.68	177.59	2,290.6	-149.2	-23.7	-132.5	1.80	
2,329.7	5.44	176.50	2,315.8	-151.7	-23.6	-134.9	1.03	
2,353.6	5.50	175.98	2,339.6	-153.9	-23.4	-137.0	0.33	
2,380.2	5.69	174.25	2,366.1	-156.5	-23.2	-139.5	0.95	
2,403.9	5.64	172.12	2,389.8	-158.9	-22.9	-141.8	0.91	
2,430.3	5.69	171.97	2,416.0	-161.4	-22.6	-144.4	0.20	
2,479.5	5.73	169.62	2,464.9	-166.3	-21.8	-149.2	0.48	
2,505.1	5.70	168.85	2,490.4	-168.8	-21.3	-151.7	0.17	
2,528.8	5.74	168.92	2,514.0	-171.1	-20.8	-154.1	0.55	
2,554.4	5.72	167.53	2,539.4	-173.6	-20.3	-156.6	1.61	
2,579.9	5.33	168.90	2,564.9	-176.0	-19.8	-159.0		

RECEIVED
Office of Oil and Gas
NOV 02 2015



EOW Completion Report



Company:	Antero	Local Co-ordinate Reference:	Well Weigle Unit 2H
Project:	Tyler County WV	TVD Reference:	Precision 525: GL 1201' + KB 19' @ 1220.0usft
Site:	Pierpoint Pad:Ingot/Klondike/Wall/Weigle	MD Reference:	Precision 525: GL 1201' + KB 19' @ 1220.0usft
Well:	Weigle Unit 2H	North Reference:	Grid
Wellbore:	Original Wellpath	Survey Calculation Method:	Minimum Curvature
Design:	As Drilled	Database:	Oklahoma District

Survey							
MD (usft)	Inc (°)	Azi (azimuth) (°)	TVD (usft)	N/S (usft)	E/W (usft)	V. Sec (usft)	DLeg (°/100usft)
2,605.4	4.97	168.92	2,590.2	-178.2	-19.4	-161.3	1.41
2,628.8	4.63	170.37	2,613.6	-180.2	-19.0	-163.2	1.54
2,654.8	4.17	169.76	2,639.5	-182.1	-18.7	-165.2	1.78
2,680.3	3.83	169.74	2,664.9	-183.9	-18.4	-166.9	1.33
2,705.8	3.52	171.22	2,690.4	-185.5	-18.1	-168.5	1.27
2,729.1	3.17	170.39	2,713.6	-186.8	-17.9	-169.9	1.52
2,754.4	2.87	171.93	2,739.0	-188.2	-17.7	-171.2	1.23
2,780.5	2.69	172.03	2,765.0	-189.4	-17.5	-172.4	0.69
2,805.9	2.41	172.69	2,790.4	-190.5	-17.3	-173.5	1.10
2,829.3	2.23	174.11	2,813.7	-191.5	-17.2	-174.4	0.81
2,854.7	2.05	173.86	2,839.2	-192.4	-17.1	-175.4	0.71
2,880.2	1.93	174.70	2,864.6	-193.3	-17.0	-176.2	0.48
2,903.8	1.82	176.40	2,888.2	-194.1	-17.0	-177.0	0.52
2,929.3	1.68	178.95	2,913.7	-194.8	-17.0	-177.7	0.63
2,954.9	1.54	178.54	2,939.2	-195.6	-16.9	-178.4	0.55
2,980.2	1.52	178.93	2,964.6	-196.2	-16.9	-179.0	0.09
3,005.8	1.41	180.79	2,990.2	-196.9	-16.9	-179.7	0.47
3,029.4	1.19	184.31	3,013.8	-197.4	-16.9	-180.2	0.99
3,055.0	1.24	183.93	3,039.3	-198.0	-17.0	-180.7	0.20
3,080.5	1.12	185.92	3,064.8	-198.5	-17.0	-181.1	0.50
3,105.9	1.07	189.71	3,090.3	-199.0	-17.1	-181.6	0.35
3,129.1	0.93	192.01	3,113.4	-199.4	-17.2	-181.9	0.63
3,155.1	0.97	188.61	3,139.4	-199.8	-17.2	-182.3	0.27
3,180.7	0.89	194.29	3,165.0	-200.2	-17.3	-182.6	0.48
3,203.9	0.84	199.79	3,188.2	-200.5	-17.4	-182.9	0.42
3,229.1	0.66	205.21	3,213.4	-200.8	-17.6	-183.2	0.77
3,254.2	0.70	205.63	3,238.5	-201.1	-17.7	-183.4	0.16
3,279.6	0.73	200.17	3,263.9	-201.4	-17.8	-183.6	0.29
3,304.7	0.80	204.20	3,289.0	-201.7	-17.9	-183.9	0.35
3,329.7	0.76	200.32	3,314.0	-202.0	-18.1	-184.1	0.26
3,354.7	0.72	208.04	3,339.0	-202.3	-18.2	-184.3	0.43
3,379.7	0.62	207.62	3,364.0	-202.6	-18.3	-184.5	0.40
3,405.1	0.71	208.99	3,389.4	-202.8	-18.5	-184.7	0.36
3,430.1	0.69	208.83	3,414.4	-203.1	-18.6	-184.9	0.08
3,455.4	0.61	213.23	3,439.7	-203.3	-18.8	-185.1	0.37
3,480.1	0.65	211.96	3,464.4	-203.6	-18.9	-185.3	0.17
3,505.0	0.59	211.93	3,489.3	-203.8	-19.1	-185.5	0.24
3,530.6	0.54	240.43	3,514.9	-204.0	-19.2	-185.6	1.10
3,555.9	0.50	223.89	3,540.2	-204.1	-19.4	-185.7	0.61
3,580.5	0.48	224.43	3,564.8	-204.3	-19.6	-185.7	0.08
3,605.9	0.48	221.82	3,590.2	-204.4	-19.7	-185.8	0.09
3,628.8	0.38	232.46	3,613.1	-204.5	-19.8	-185.9	0.56
3,654.1	0.46	225.49	3,638.4	-204.7	-20.0	-186.0	0.38
3,679.4	0.48	231.85	3,663.7	-204.8	-20.1	-186.0	0.22

RECEIVED
 Office of Oil and Gas
 NOV 12 2015
 WV Department of
 Environmental Protection
 COMPASS 5000 Client 74



EOW Completion Report



Company:	Antero	Local Co-ordinate Reference:	Well Weigle Unit 2H
Project:	Tyler County WV	TVD Reference:	Precision 525: GL 1201' + KB 19' @ 1220.0usft
Site:	Pierpoint Pad:Ingot/Klondike/Wall/Weigle	MD Reference:	Precision 525: GL 1201' + KB 19' @ 1220.0usft
Well:	Weigle Unit 2H	North Reference:	Grid
Wellbore:	Original Wellpath	Survey Calculation Method:	Minimum Curvature
Design:	As Drilled	Database:	Oklahoma District

Survey								
MD (usft)	Inc (°)	Azi (azimuth) (°)	TVD (usft)	N/S (usft)	E/W (usft)	V. Sec (usft)	DLeg (°/100usft)	
3,704.8	0.55	230.46	3,689.1	-204.9	-20.3	-186.1	0.28	
3,730.6	0.47	237.62	3,714.9	-205.1	-20.5	-186.2	0.40	
3,753.0	0.58	242.20	3,737.2	-205.2	-20.7	-186.2	0.53	
3,778.7	0.49	239.58	3,763.0	-205.3	-20.9	-186.2	0.36	
3,804.1	0.52	241.35	3,788.4	-205.4	-21.1	-186.3	0.13	
3,829.5	0.55	243.12	3,813.8	-205.5	-21.3	-186.3	0.13	
3,854.9	0.55	244.66	3,839.2	-205.6	-21.5	-186.3	0.06	
3,880.2	0.49	234.47	3,864.5	-205.7	-21.7	-186.4	0.43	
3,905.7	0.60	240.49	3,890.0	-205.9	-21.9	-186.4	0.49	
3,928.5	0.52	241.27	3,912.8	-206.0	-22.1	-186.5	0.35	
3,954.0	0.57	245.60	3,938.3	-206.1	-22.3	-186.5	0.25	
3,979.4	0.62	239.89	3,963.7	-206.2	-22.5	-186.5	0.31	
4,004.9	0.57	244.07	3,989.2	-206.3	-22.8	-186.6	0.26	
4,029.9	0.56	244.80	4,014.2	-206.4	-23.0	-186.6	0.05	
4,054.7	0.54	238.43	4,039.0	-206.5	-23.2	-186.6	0.26	
4,079.5	0.51	241.95	4,063.8	-206.7	-23.4	-186.7	0.18	
4,104.4	0.54	239.99	4,088.7	-206.8	-23.6	-186.7	0.14	
4,129.3	0.60	251.48	4,113.6	-206.9	-23.8	-186.7	0.52	
4,154.2	0.58	242.79	4,138.5	-207.0	-24.1	-186.7	0.37	
4,178.9	0.48	248.26	4,163.2	-207.1	-24.3	-186.8	0.45	
4,203.9	0.55	253.68	4,188.1	-207.1	-24.5	-186.8	0.34	
4,229.0	0.60	244.67	4,213.2	-207.2	-24.7	-186.8	0.41	
4,254.0	0.60	248.03	4,238.3	-207.3	-25.0	-186.8	0.14	
4,278.7	0.59	248.66	4,263.0	-207.4	-25.2	-186.8	0.05	
4,303.6	0.64	246.03	4,287.8	-207.5	-25.4	-186.8	0.23	
4,330.9	0.63	235.68	4,315.1	-207.7	-25.7	-186.9	0.42	
4,355.7	0.67	235.83	4,340.0	-207.8	-25.9	-186.9	0.16	
4,380.5	0.64	236.84	4,364.8	-208.0	-26.2	-187.0	0.13	
4,405.2	0.75	235.36	4,389.5	-208.2	-26.4	-187.1	0.45	
4,430.1	0.69	232.03	4,414.3	-208.3	-26.7	-187.2	0.29	
4,455.3	0.66	231.79	4,439.6	-208.5	-26.9	-187.3	0.12	
4,480.2	0.79	226.68	4,464.4	-208.7	-27.1	-187.4	0.58	
4,505.0	0.78	223.10	4,489.2	-209.0	-27.4	-187.5	0.20	
4,529.9	0.72	227.96	4,514.1	-209.2	-27.6	-187.7	0.35	
4,554.6	0.86	221.65	4,538.9	-209.4	-27.9	-187.8	0.66	
4,579.3	0.85	224.44	4,563.5	-209.7	-28.1	-188.0	0.17	
4,604.2	0.90	227.27	4,588.5	-210.0	-28.4	-188.1	0.26	
4,629.0	0.89	219.21	4,613.2	-210.3	-28.6	-188.3	0.51	
4,653.8	0.86	220.38	4,638.0	-210.6	-28.9	-188.5	0.14	
4,679.0	0.78	220.57	4,663.2	-210.8	-29.1	-188.7	0.32	
4,703.9	0.71	222.64	4,688.2	-211.1	-29.3	-188.8	0.20	
4,728.8	0.70	221.57	4,713.1	-211.3	-29.5	-189.0	0.07	
4,753.5	0.72	223.33	4,737.7	-211.5	-29.8	-189.1	0.12	
4,780.3	0.74	225.47	4,764.5	-211.8	-30.0	-189.3	0.13	

RECEIVED
Office of Oil and Gas
NOV 02 2015

WV Department of
Environmental Protection
COMPASS 5000 v Build 11
02/12/2016



EOW Completion Report



Company:	Antero	Local Co-ordinate Reference:	Well Weigle Unit 2H
Project:	Tyler County WV	TVD Reference:	Precision 525: GL 1201' + KB 19' @ 1220.0usft
Site:	Pierpoint Pad:Ingot/Klondike/Wall/Weigle	MD Reference:	Precision 525: GL 1201' + KB 19' @ 1220.0usft
Well:	Weigle Unit 2H	North Reference:	Grid
Wellbore:	Original Wellpath	Survey Calculation Method:	Minimum Curvature
Design:	As Drilled	Database:	Oklahoma District

MD (usft)	Inc (°)	Azi (azimuth) (°)	TVD (usft)	N/S (usft)	E/W (usft)	V. Sec (usft)	DLeg (°/100usft)
4,804.4	0.75	227.49	4,788.6	-212.0	-30.2	-189.4	0.12
4,829.0	0.71	221.88	4,813.2	-212.2	-30.4	-189.5	0.33
4,853.7	0.70	222.06	4,838.0	-212.4	-30.6	-189.7	0.04
4,880.4	0.67	224.13	4,864.6	-212.7	-30.9	-189.8	0.15
4,904.8	0.66	223.19	4,889.0	-212.9	-31.1	-189.9	0.06
4,929.1	0.69	227.28	4,913.3	-213.1	-31.3	-190.1	0.23
4,955.9	0.68	225.50	4,940.1	-213.3	-31.5	-190.2	0.09
4,980.1	0.59	239.80	4,964.3	-213.5	-31.7	-190.3	0.75
5,004.5	0.57	229.06	4,988.7	-213.6	-31.9	-190.3	0.45
5,029.1	0.64	227.88	5,013.3	-213.8	-32.1	-190.4	0.29
5,056.0	0.55	236.45	5,040.2	-213.9	-32.3	-190.5	0.47
5,080.3	0.60	234.55	5,064.5	-214.1	-32.5	-190.6	0.22
5,104.6	0.76	227.33	5,088.8	-214.3	-32.7	-190.7	0.75
5,128.9	0.43	238.78	5,113.1	-214.4	-32.9	-190.8	1.44
5,155.6	0.91	228.00	5,139.8	-214.6	-33.2	-190.9	1.85
5,180.6	0.72	226.85	5,164.8	-214.9	-33.4	-191.0	0.76
5,204.4	0.62	239.29	5,188.6	-215.0	-33.7	-191.1	0.74
5,230.7	0.79	227.93	5,214.9	-215.2	-33.9	-191.2	0.83
5,255.0	0.53	251.68	5,239.1	-215.4	-34.1	-191.2	1.53
5,278.2	0.51	248.00	5,262.4	-215.4	-34.3	-191.3	0.17
5,304.8	0.47	248.60	5,289.0	-215.5	-34.6	-191.3	0.15
5,328.8	0.60	237.04	5,313.0	-215.6	-34.8	-191.3	0.70
5,355.0	0.56	245.52	5,339.2	-215.8	-35.0	-191.3	0.36
5,378.8	0.57	245.37	5,363.0	-215.9	-35.2	-191.4	0.04
5,405.2	0.50	245.72	5,389.4	-216.0	-35.4	-191.4	0.27
5,428.9	0.56	243.81	5,413.1	-216.0	-35.6	-191.4	0.26
5,455.3	0.58	248.76	5,439.5	-216.2	-35.9	-191.4	0.20
5,479.1	0.57	253.17	5,463.3	-216.2	-36.1	-191.4	0.19
5,505.3	0.50	245.24	5,489.5	-216.3	-36.3	-191.4	0.39
5,528.7	0.57	248.51	5,512.9	-216.4	-36.5	-191.4	0.33
5,554.4	0.68	247.49	5,538.6	-216.5	-36.8	-191.4	0.43
5,580.2	0.69	245.45	5,564.4	-216.6	-37.1	-191.5	0.10
5,603.6	0.52	261.60	5,587.8	-216.7	-37.3	-191.4	1.02
5,629.3	0.62	254.25	5,613.5	-216.8	-37.5	-191.4	0.48
5,655.0	0.68	249.33	5,639.2	-216.8	-37.8	-191.4	0.32
5,678.8	0.56	257.60	5,663.0	-216.9	-38.1	-191.4	0.63
5,704.6	0.62	260.18	5,688.8	-217.0	-38.3	-191.4	0.25
5,730.3	0.56	264.31	5,714.4	-217.0	-38.6	-191.3	0.29
5,753.5	0.67	250.55	5,737.7	-217.1	-38.8	-191.3	0.79
5,779.4	0.66	261.24	5,763.5	-217.1	-39.1	-191.2	0.48
5,805.1	0.56	272.04	5,789.3	-217.2	-39.4	-191.2	0.59
5,830.7	0.57	257.60	5,814.9	-217.2	-39.6	-191.1	0.56
5,854.2	0.69	260.64	5,838.4	-217.2	-39.9	-191.1	0.53
5,880.3	0.64	254.93	5,864.5	-217.3	-40.2	-191.0	0.32

RECEIVED
 Office of Oil and Gas
 NOV 02 2015
 WV Department of
 Environmental Protection
 COMPASS 5000.1 Build 2.0
 02/12/2016



EOW Completion Report



Company:	Antero	Local Co-ordinate Reference:	Well Weigle Unit 2H
Project:	Tyler County WV	TVD Reference:	Precision 525: GL 1201' + KB 19' @ 1220.0usft
Site:	Pierpoint Pad:Ingot/Klondike/Wall/Weigle	MD Reference:	Precision 525: GL 1201' + KB 19' @ 1220.0usft
Well:	Weigle Unit 2H	North Reference:	Grid
Wellbore:	Original Wellpath	Survey Calculation Method:	Minimum Curvature
Design:	As Drilled	Database:	Oklahoma District

Survey							
MD (usft)	Inc (°)	Azi (azimuth) (°)	TVD (usft)	N/S (usft)	E/W (usft)	V. Sec (usft)	DLeg (°/100usft)
5,896.4	0.52	253.19	5,880.6	-217.3	-40.3	-191.0	0.75
5,920.0	0.58	244.26	5,904.2	-217.4	-40.6	-191.0	0.44
5,965.0	0.60	261.14	5,949.2	-217.6	-41.0	-191.0	0.39
6,010.0	0.70	255.47	5,994.1	-217.7	-41.5	-190.9	0.26
6,055.0	0.89	252.68	6,039.1	-217.8	-42.1	-190.9	0.43
6,100.0	0.93	255.07	6,084.1	-218.0	-42.8	-190.9	0.12
6,144.0	2.49	44.89	6,128.1	-217.4	-42.4	-190.4	7.56
6,190.0	8.29	54.76	6,173.9	-214.8	-39.0	-189.1	12.72
6,234.0	12.65	53.76	6,217.2	-210.1	-32.5	-186.9	9.92
6,279.0	12.65	43.72	6,261.1	-203.7	-25.2	-183.3	4.88
6,324.0	15.21	22.12	6,304.8	-194.6	-19.5	-176.7	12.78
6,349.0	17.71	15.36	6,328.8	-187.9	-17.3	-171.1	12.59
SCMR							
6,369.0	19.84	11.18	6,347.7	-181.7	-15.8	-165.7	12.59
6,414.0	25.32	4.80	6,389.2	-164.6	-13.5	-150.4	13.32
6,459.0	30.36	0.58	6,429.0	-143.6	-12.6	-130.9	12.02
6,504.0	34.79	357.39	6,466.9	-119.4	-13.1	-108.0	10.56
6,548.0	39.93	354.83	6,501.9	-92.8	-14.9	-82.3	12.20
6,550.0	40.12	354.81	6,503.4	-91.5	-15.1	-81.0	9.40
MDLX							
6,593.0	44.15	354.38	6,535.3	-62.8	-17.8	-53.1	9.40
6,638.0	48.48	352.50	6,566.4	-30.4	-21.5	-21.4	10.08
6,683.0	52.93	348.54	6,594.9	3.9	-27.3	12.8	12.00
6,696.0	54.49	347.61	6,602.6	14.1	-29.4	23.2	13.33
BRKT							
6,728.0	58.37	345.47	6,620.3	40.0	-35.7	49.7	13.33
6,742.0	60.13	344.90	6,627.4	51.7	-38.7	61.7	13.08
TLLY							
6,773.0	64.05	343.70	6,641.9	78.0	-46.2	89.0	13.08
6,818.0	68.15	341.97	6,660.2	117.3	-58.3	130.1	9.77
6,836.0	70.00	342.07	6,666.6	133.3	-63.5	146.9	10.28
MRCL_HOT							
6,862.0	72.67	342.20	6,674.9	156.8	-71.0	171.5	10.28
6,907.0	79.50	341.39	6,685.7	198.2	-84.7	215.2	15.28
6,952.0	87.18	340.23	6,690.9	240.4	-99.4	259.8	17.26
7,001.0	91.04	339.22	6,691.7	286.4	-116.3	308.8	8.14
7,090.0	90.80	341.42	6,690.3	370.2	-146.3	397.8	2.49
7,180.0	89.03	340.38	6,690.4	455.2	-175.8	487.8	2.28
7,270.0	88.79	340.67	6,692.1	540.0	-205.8	577.8	0.42
7,359.0	90.37	342.00	6,692.8	624.3	-234.2	666.8	2.32
7,449.0	90.94	342.63	6,691.7	710.1	-261.6	756.7	0.94
7,538.0	90.10	342.63	6,690.9	795.0	-288.2	845.6	0.94
7,628.0	90.84	342.57	6,690.2	880.9	-315.1	935.5	0.82
7,718.0	90.60	340.88	6,689.1	966.3	-343.3	1,025.5	1.90
7,808.0	90.40	342.16	6,688.3	1,051.7	-371.8	1,115.2	1.44

RECEIVED
Office of Oil and Gas
NOV 12 2015



EOW Completion Report



Company:	Antero	Local Co-ordinate Reference:	Well Weigle Unit 2H
Project:	Tyler County WV	TVD Reference:	Precision 525: GL 1201' + KB 19' @ 1220.0usft
Site:	Pierpoint Pad:Ingot/Klondike/Wall/Weigle	MD Reference:	Precision 525: GL 1201' + KB 19' @ 1220.0usft
Well:	Weigle Unit 2H	North Reference:	Grid
Wellbore:	Original Wellpath	Survey Calculation Method:	Minimum Curvature
Design:	As Drilled	Database:	Oklahoma District

Survey							
MD (usft)	Inc (°)	Azi (azimuth) (°)	TVD (usft)	N/S (usft)	E/W (usft)	V. Sec (usft)	DLeg (°/100usft)
7,897.0	90.40	339.35	6,687.7	1,135.7	-401.1	1,204.5	3.16
7,987.0	90.17	339.18	6,687.2	1,219.9	-433.0	1,294.5	0.32
8,077.0	90.50	338.03	6,686.7	1,303.7	-465.8	1,384.4	1.33
8,167.0	90.07	338.18	6,686.2	1,387.2	-499.4	1,474.3	0.51
8,256.0	91.14	337.84	6,685.3	1,469.7	-532.7	1,563.3	1.26
8,346.0	90.50	338.37	6,684.0	1,553.2	-566.3	1,653.2	0.92
8,436.0	91.84	339.11	6,682.2	1,637.1	-598.9	1,743.1	1.70
8,526.0	91.98	339.54	6,679.2	1,721.2	-630.7	1,833.1	0.50
8,616.0	91.85	338.43	6,676.2	1,805.2	-662.9	1,923.0	1.24
8,706.0	91.34	340.52	6,673.7	1,889.4	-694.5	2,012.9	2.39
8,795.0	91.65	340.40	6,671.3	1,973.3	-724.2	2,101.9	0.37
8,885.0	91.55	340.13	6,668.8	2,058.0	-754.6	2,191.9	0.32
8,974.0	90.54	341.74	6,667.2	2,142.1	-783.7	2,280.9	2.14
9,064.0	90.37	340.81	6,666.5	2,227.3	-812.6	2,370.8	1.05
9,154.0	90.47	341.35	6,665.8	2,312.4	-841.7	2,460.8	0.61
9,244.0	90.70	340.51	6,664.9	2,397.5	-871.1	2,550.8	0.97
9,333.0	88.69	341.64	6,665.4	2,481.7	-900.0	2,639.8	2.59
9,423.0	88.42	342.44	6,667.6	2,567.3	-927.7	2,729.7	0.94
9,513.0	88.89	340.86	6,669.8	2,652.7	-956.1	2,819.7	1.83
9,602.0	88.66	341.68	6,671.7	2,736.9	-984.6	2,908.6	0.96
9,692.0	88.42	342.26	6,674.0	2,822.5	-1,012.5	2,998.6	0.70
9,782.0	89.40	339.72	6,675.7	2,907.5	-1,041.8	3,088.5	3.02
9,871.0	90.50	338.46	6,675.7	2,990.7	-1,073.6	3,177.5	1.88
9,961.0	90.23	337.74	6,675.2	3,074.2	-1,107.1	3,267.5	0.85
10,051.0	89.80	339.15	6,675.1	3,157.9	-1,140.2	3,357.4	1.64
10,140.0	89.63	338.61	6,675.6	3,240.9	-1,172.3	3,446.4	0.64
10,230.0	89.87	339.00	6,676.0	3,324.8	-1,204.8	3,536.3	0.51
10,319.0	89.53	337.64	6,676.4	3,407.5	-1,237.7	3,625.3	1.58
10,409.0	90.10	340.68	6,676.7	3,491.6	-1,269.7	3,715.3	3.44
10,499.0	89.87	339.19	6,676.8	3,576.1	-1,300.6	3,805.3	1.68
10,588.0	89.93	340.58	6,676.9	3,659.7	-1,331.2	3,894.2	1.56
10,678.0	90.03	341.16	6,676.9	3,744.7	-1,360.7	3,984.2	0.65
10,768.0	90.10	341.13	6,676.8	3,829.9	-1,389.8	4,074.2	0.08
10,857.0	90.17	340.38	6,676.6	3,913.9	-1,419.1	4,163.2	0.85
10,947.0	89.73	338.71	6,676.7	3,998.3	-1,450.5	4,253.2	1.92
11,036.0	90.13	340.92	6,676.8	4,081.8	-1,481.2	4,343.2	2.52
11,126.0	89.90	341.42	6,676.8	4,167.0	-1,510.3	4,432.2	0.61
11,216.0	90.24	342.57	6,676.7	4,252.6	-1,538.1	4,522.2	1.33
11,305.0	90.17	340.71	6,676.4	4,337.0	-1,566.1	4,611.1	2.09
11,395.0	89.87	340.01	6,676.3	4,421.8	-1,596.4	4,701.1	0.85
11,485.0	89.66	337.96	6,676.7	4,505.8	-1,628.7	4,791.1	2.29
11,575.0	91.11	339.39	6,676.1	4,589.6	-1,661.4	4,881.1	2.26
11,664.0	90.80	339.67	6,674.6	4,673.0	-1,692.5	4,970.0	1.10
11,754.0	90.77	342.28	6,673.4	4,758.1	-1,721.8	5,060.0	2.90

RECEIVED
 Office of Oil and Gas
 NOV 12 2015
 WV Department of
 Environmental Protection



EOW Completion Report



Company:	Antero	Local Co-ordinate Reference:	Well Weigle Unit 2H
Project:	Tyler County WV	TVD Reference:	Precision 525: GL 1201' + KB 19' @ 1220.0usft
Site:	Pierpoint Pad:Ingot/Klondike/Wall/Weigle	MD Reference:	Precision 525: GL 1201' + KB 19' @ 1220.0usft
Well:	Weigle Unit 2H	North Reference:	Grid
Wellbore:	Original Wellpath	Survey Calculation Method:	Minimum Curvature
Design:	As Drilled	Database:	Oklahoma District

Survey							
MD (usft)	Inc (°)	Azi (azimuth) (°)	TVD (usft)	N/S (usft)	E/W (usft)	V. Sec (usft)	DLeg (°/100usft)
11,844.0	91.51	342.02	6,671.6	4,843.7	-1,749.4	5,149.9	0.87
11,933.0	89.63	341.58	6,670.7	4,928.3	-1,777.2	5,238.9	2.17
12,023.0	89.43	341.73	6,671.4	5,013.7	-1,805.5	5,328.9	0.28
12,113.0	89.53	339.54	6,672.3	5,098.6	-1,835.4	5,418.9	2.44
12,203.0	89.30	340.05	6,673.2	5,183.0	-1,866.5	5,508.9	0.62
12,293.0	89.66	339.85	6,674.0	5,267.6	-1,897.3	5,598.9	0.46
12,382.0	90.60	340.68	6,673.8	5,351.4	-1,927.4	5,687.9	1.41
12,472.0	90.97	340.62	6,672.6	5,436.3	-1,957.2	5,777.8	0.42
12,562.0	89.46	342.67	6,672.2	5,521.7	-1,985.5	5,867.8	2.83
12,652.0	88.69	340.19	6,673.7	5,607.0	-2,014.2	5,957.8	2.88
12,742.0	88.89	339.64	6,675.6	5,691.5	-2,045.1	6,047.8	0.65
12,831.0	88.69	339.44	6,677.5	5,774.8	-2,076.2	6,136.7	0.32
12,921.0	89.77	340.06	6,678.7	5,859.3	-2,107.3	6,226.7	1.38
13,010.0	89.90	339.66	6,678.9	5,942.8	-2,138.0	6,315.7	0.47
13,100.0	89.13	339.65	6,679.7	6,027.2	-2,169.3	6,405.7	0.86
13,190.0	89.03	338.96	6,681.1	6,111.4	-2,201.1	6,495.7	0.77
13,279.0	90.64	341.52	6,681.4	6,195.1	-2,231.2	6,584.7	3.40
13,369.0	90.54	340.22	6,680.5	6,280.2	-2,260.7	6,674.6	1.45
13,458.0	90.22	339.58	6,679.9	6,363.7	-2,291.2	6,763.6	0.80
13,548.0	90.10	339.23	6,679.6	6,448.0	-2,322.9	6,853.6	0.41
13,637.0	89.87	338.42	6,679.6	6,531.0	-2,355.0	6,942.6	0.95
13,727.0	90.60	340.57	6,679.3	6,615.3	-2,386.6	7,032.6	2.52
13,816.0	90.47	339.55	6,678.4	6,698.9	-2,416.9	7,121.6	1.16
13,906.0	90.34	342.18	6,677.8	6,784.0	-2,446.4	7,211.6	2.93
13,995.0	90.23	343.39	6,677.4	6,869.0	-2,472.8	7,300.5	1.37
14,085.0	90.34	344.10	6,676.9	6,955.4	-2,497.9	7,390.3	0.80
14,175.0	88.76	341.95	6,677.6	7,041.4	-2,524.2	7,480.2	2.96
14,264.0	89.33	341.54	6,679.1	7,125.9	-2,552.1	7,569.2	0.79
14,354.0	89.70	344.11	6,679.9	7,211.9	-2,578.7	7,659.1	2.88
14,444.0	88.72	343.24	6,681.1	7,298.3	-2,604.0	7,748.9	1.46
14,534.0	88.86	340.62	6,683.0	7,383.8	-2,631.9	7,838.8	2.91
14,623.0	88.73	341.03	6,684.9	7,467.9	-2,661.1	7,927.8	0.48
14,713.0	89.56	339.50	6,686.2	7,552.6	-2,691.5	8,017.8	1.93
14,803.0	89.13	338.99	6,687.3	7,636.7	-2,723.4	8,107.8	0.74
14,893.0	90.74	337.74	6,687.4	7,720.4	-2,756.6	8,197.7	2.26
14,982.0	90.50	336.28	6,686.4	7,802.3	-2,791.3	8,286.6	1.66
15,072.0	90.81	337.77	6,685.4	7,885.1	-2,826.4	8,376.4	1.69
15,162.0	90.94	340.49	6,684.0	7,969.2	-2,858.5	8,466.4	3.03
15,252.0	88.79	339.61	6,684.2	8,053.8	-2,889.2	8,556.4	2.58
15,341.0	90.44	340.37	6,684.8	8,137.4	-2,919.7	8,645.4	2.64
15,431.0	90.70	341.20	6,683.9	8,222.4	-2,949.3	8,735.3	0.97
15,521.0	89.30	340.98	6,683.9	8,307.6	-2,978.4	8,825.3	1.57
15,610.0	90.71	339.97	6,683.9	8,391.4	-3,008.2	8,914.3	1.95
15,700.0	90.77	340.84	6,682.7	8,476.2	-3,038.4	9,004.3	0.97

RECEIVED
 Office of Oil and Gas
 NOV 12 2015
 WV Department of
 Environmental Protection
 COMPASS 5000.1 Build 74
 02/12/2016

Company:	Antero	Local Co-ordinate Reference:	Well Weigle Unit 2H
Project:	Tyler County WV	TVD Reference:	Precision 525: GL 1201' + KB 19' @ 1220.0usft
Site:	Pierpoint Pad:Ingot/Klondike/Wall/Weigle	MD Reference:	Precision 525: GL 1201' + KB 19' @ 1220.0usft
Well:	Weigle Unit 2H	North Reference:	Grid
Wellbore:	Original Wellpath	Survey Calculation Method:	Minimum Curvature
Design:	As Drilled	Database:	Oklahoma District

MD (usft)	Inc (°)	Azi (azimuth) (°)	TVD (usft)	N/S (usft)	E/W (usft)	V. Sec (usft)	DLeg (°/100usft)
15,790.0	89.90	340.50	6,682.2	8,561.1	-3,068.2	9,094.3	1.04
15,879.0	89.90	342.50	6,682.4	8,645.5	-3,096.4	9,183.3	2.25
15,969.0	90.00	339.92	6,682.4	8,730.7	-3,125.4	9,273.3	2.87
16,058.0	89.93	337.78	6,682.5	8,813.7	-3,157.5	9,362.2	2.41
16,148.0	90.07	336.05	6,682.5	8,896.5	-3,192.8	9,452.1	1.93
16,237.0	90.40	339.04	6,682.1	8,978.8	-3,226.8	9,541.0	3.38
16,327.0	90.77	340.40	6,681.2	9,063.2	-3,258.0	9,631.0	1.57
16,416.0	90.27	340.04	6,680.4	9,146.9	-3,288.1	9,720.0	0.69
16,506.0	90.64	339.52	6,679.7	9,231.4	-3,319.2	9,809.9	0.71
16,596.0	89.83	339.90	6,679.3	9,315.8	-3,350.4	9,899.9	0.99
16,686.0	88.79	340.79	6,680.4	9,400.5	-3,380.7	9,989.9	1.52
16,775.0	88.62	340.57	6,682.4	9,484.5	-3,410.1	10,078.9	0.31
16,865.0	89.23	340.42	6,684.1	9,569.3	-3,440.1	10,168.9	0.70
16,955.0	89.36	338.26	6,685.2	9,653.5	-3,471.9	10,258.9	2.40
17,013.0	89.50	340.00	6,685.8	9,707.7	-3,492.5	10,316.8	3.01
17,044.0	90.13	340.92	6,685.9	9,736.9	-3,502.9	10,347.8	3.60
17,134.0	90.04	342.13	6,685.8	9,822.3	-3,531.4	10,437.8	1.35
17,224.0	90.00	343.36	6,685.7	9,908.2	-3,558.1	10,527.7	1.37
17,313.0	89.46	342.12	6,686.1	9,993.2	-3,584.5	10,616.7	1.52
17,403.0	90.07	342.54	6,686.5	10,079.0	-3,611.9	10,706.6	0.82
17,411.0	89.97	342.90	6,686.5	10,086.6	-3,614.2	10,714.6	4.67
17,469.0	89.97	342.90	6,686.5	10,142.1	-3,631.3	10,772.5	0.00

PTB

Measured Depth (usft)	Vertical Depth (usft)	Local Coordinates		Comment
		+N/-S (usft)	+E/-W (usft)	
6,349.0	6,328.8	-187.9	-17.3	SCMR
6,550.0	6,503.4	-91.5	-15.1	MDLX
6,696.0	6,602.6	14.1	-29.4	BRKT
6,742.0	6,627.4	51.7	-38.7	TLLY
6,836.0	6,666.6	133.3	-63.5	MRCL_HOT
17,469.0	6,686.5	10,142.1	-3,631.3	PTB

Checked By: _____	Approved By: _____	Date: _____
-------------------	--------------------	-------------

LATITUDE 39°27'30"

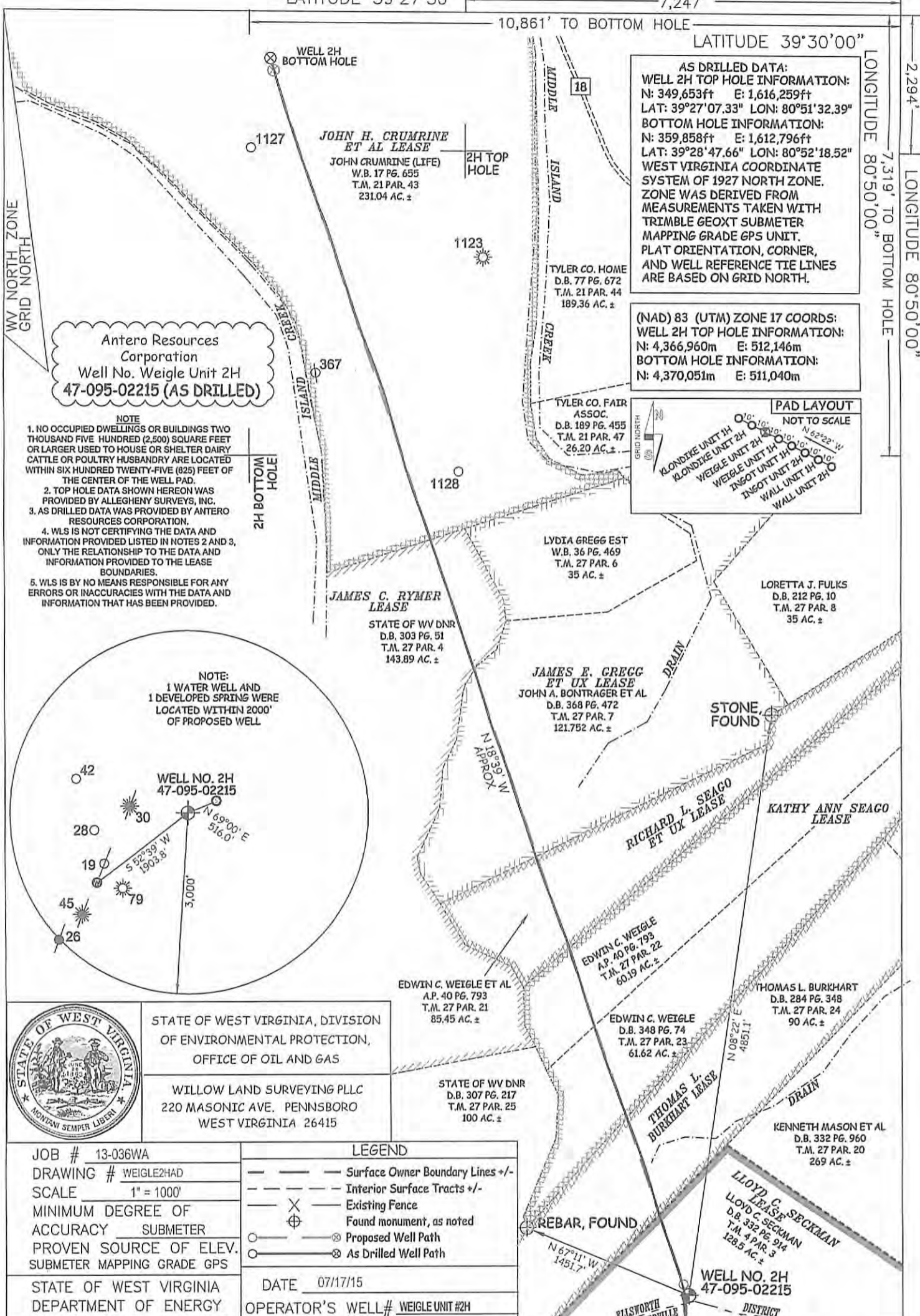
7,247'

10,861' TO BOTTOM HOLE

LATITUDE 39°30'00"

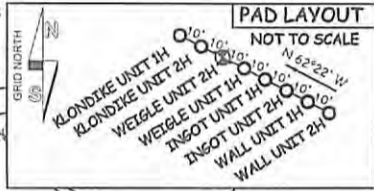
LONGITUDE 80°50'00"

LONGITUDE 80°50'00"



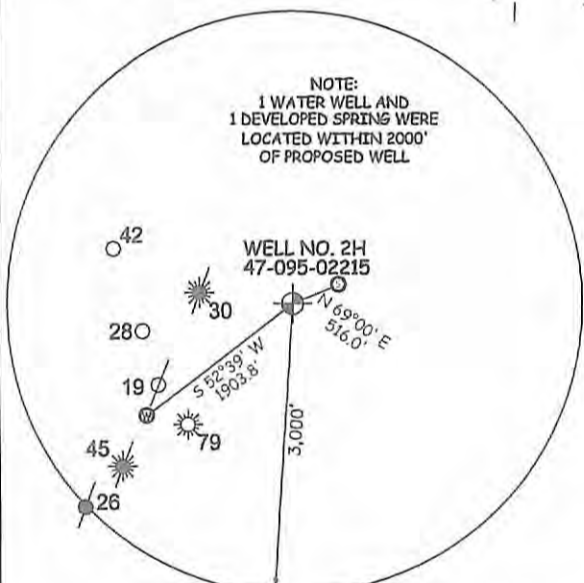
AS DRILLED DATA:
 WELL 2H TOP HOLE INFORMATION:
 N: 349,653ft E: 1,616,259ft
 LAT: 39°27'07.33" LON: 80°51'32.39"
 BOTTOM HOLE INFORMATION:
 N: 359,858ft E: 1,612,796ft
 LAT: 39°28'47.66" LON: 80°52'18.52"
 WEST VIRGINIA COORDINATE SYSTEM OF 1927 NORTH ZONE. ZONE WAS DERIVED FROM MEASUREMENTS TAKEN WITH TRIMBLE GEOXT SUBMETER MAPPING GRADE GPS UNIT. PLAT ORIENTATION, CORNER, AND WELL REFERENCE TIE LINES ARE BASED ON GRID NORTH.

(NAD) 83 (UTM) ZONE 17 COORDS:
 WELL 2H TOP HOLE INFORMATION:
 N: 4,366,960m E: 512,146m
 BOTTOM HOLE INFORMATION:
 N: 4,370,051m E: 511,040m



Antero Resources Corporation
 Well No. Weigle Unit 2H
 47-095-02215 (AS DRILLED)

- NOTE
1. NO OCCUPIED DWELLINGS OR BUILDINGS TWO THOUSAND FIVE HUNDRED (2,500) SQUARE FEET OR LARGER USED TO HOUSE OR SHELTER DAIRY CATTLE OR POULTRY HUSBANDRY ARE LOCATED WITHIN SIX HUNDRED TWENTY-FIVE (625) FEET OF THE CENTER OF THE WELL PAD.
 2. TOP HOLE DATA SHOWN HEREON WAS PROVIDED BY ALLEGHENY SURVEYS, INC.
 3. AS DRILLED DATA WAS PROVIDED BY ANTERO RESOURCES CORPORATION.
 4. WLS IS NOT CERTIFYING THE DATA AND INFORMATION PROVIDED LISTED IN NOTES 2 AND 3, ONLY THE RELATIONSHIP TO THE DATA AND INFORMATION PROVIDED TO THE LEASE BOUNDARIES.
 5. WLS IS BY NO MEANS RESPONSIBLE FOR ANY ERRORS OR INACCURACIES WITH THE DATA AND INFORMATION THAT HAS BEEN PROVIDED.



STATE OF WEST VIRGINIA, DIVISION OF ENVIRONMENTAL PROTECTION, OFFICE OF OIL AND GAS
 WILLOW LAND SURVEYING PLLC
 220 MASONIC AVE. PENNSBORO WEST VIRGINIA 26415

JOB # 13-036WA
 DRAWING # WEIGLE2HAD
 SCALE 1" = 1000'
 MINIMUM DEGREE OF ACCURACY SUBMETER
 PROVEN SOURCE OF ELEV. SUBMETER MAPPING GRADE GPS
 STATE OF WEST VIRGINIA DEPARTMENT OF ENERGY DIVISION OF OIL AND GAS

LEGEND	
---	Surface Owner Boundary Lines +/-
---	Interior Surface Tracts +/-
X	Existing Fence
⊕	Found monument, as noted
○	Proposed Well Path
⊗	As Drilled Well Path

DATE 07/17/15
 OPERATOR'S WELL# WEIGLE UNIT #2H

WELL TYPE: OIL GAS LIQUID INJECTION WASTE DISPOSAL 47 - 095 - 02215
 (IF "GAS") PRODUCTION STORAGE DEEP SHALLOW
 LOCATION: ELEVATION 1,216' ORIGINAL - 1,201' AS DRILLED WATERSHED STATE COUNTY DISTRICT
 QUADRANGLE SHIRLEY 7.5' DISTRICT ELLSWORTH COUNTY TYLER
 SURFACE OWNER LLOYD C. SECKMAN ACREAGE 128.5 ACRES +/-
 OIL & GAS ROYALTY OWNER LLOYD C. SECKMAN; THOMAS L. BURKHART; KATHY ANN SEAGO; LEASE ACREAGE 128.5 ACRES +/- 129.2 ACRES +/-
 RICHARD L. SEAGO ET UX; JAMES E. GREGG ET UX; JAMES C. RYMER; JOHN H. CRUMRINE ET AL 74.2 AC +/-; 141 AC +/-; 143.89 AC +/-; 256 AC +/-
 PROPOSED WORK: DRILL CONVERT DRILL DEEPER REDRILL FRACTURE OR STIMULANT
 PLUG OFF OLD FORMATION PERFORATE NEW FORMATION OTHER PHYSICAL CHANGE IN WELL
 (SPECIFY) (X) AS DRILLED PLUG & ABANDON CLEAN OUT & REPLUG
 TARGET FORMATION MARCELLUS ESTIMATED DEPTH 5,687' TVD 17,469' MD
 WELL OPERATOR ANTERO RESOURCES CORP. DESIGNATED AGENT DIANNA STAMPER - CT CORPORATION SYSTEM
 ADDRESS 1615 WYNKOOP STREET ADDRESS 5400 D BIG TYLER ROAD
 DENVER, CO 80202 CHARLESTON, WV 25313

RECEIVED
STATE DEPARTMENT OF ENVIRONMENTAL PROTECTION
02/02/2016