

SHR 60
WV 514463
EQT Production Company

LATITUDE 39 - 25 - 00

5525'

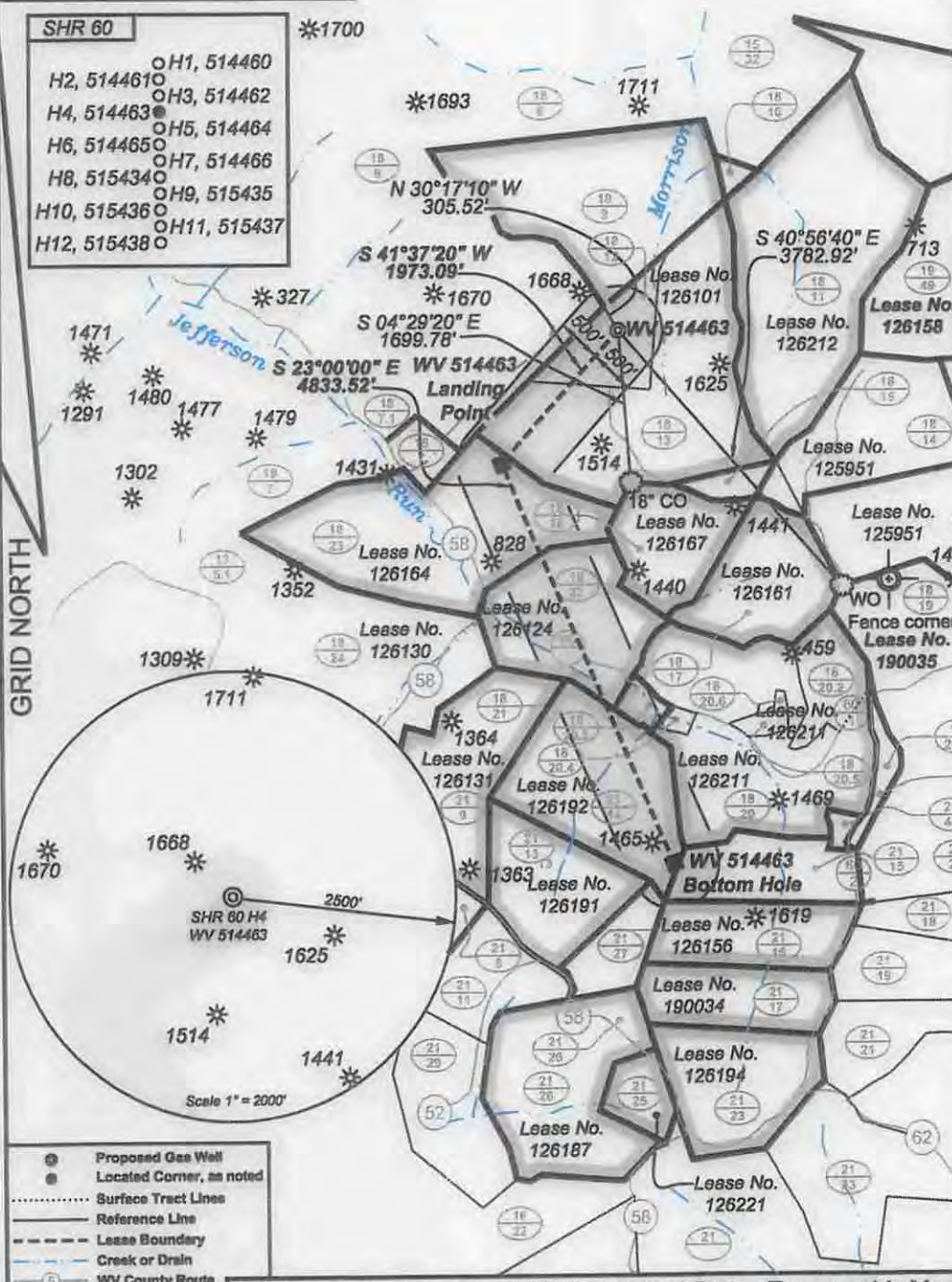
LONGITUDE 80 - 47 - 30

- SHR 60** *1700
- H1, 514460
 - H2, 514461
 - H3, 514462
 - H4, 514463
 - H5, 514464
 - H6, 514465
 - H7, 514466
 - H8, 515434
 - H9, 515435
 - H10, 515436
 - H11, 515437
 - H12, 515438

Notes:
 WV 514463 coordinates are
 NAD 27 N: 328,537.21 E: 1,628,438.95
 NAD 27 Lat: 39.394804 Long: -80.811237
 NAD 83 UTM N: 4,360,593.72 E: 516,269.03
 WV 514463 Landing Point coordinates are
 NAD 27 N: 327,062.27 E: 1,628,128.36
 NAD 27 Lat: 39.390502 Long: -80.815797
 NAD 83 UTM N: 4,360,137.70 E: 515,877.25
 WV 514463 Bottom Hole coordinates are
 NAD 27 N: 322,612.99 E: 1,630,016.96
 NAD 27 Lat: 39.378363 Long: -80.808866
 NAD 83 UTM N: 4,358,791.83 E: 516,475.24

West Virginia Coordinate system of 1927 (North Zone)
 based upon Differential GPS Measurements.
 Plat orientation, corner and well ties are based upon
 the grid north meridian.
 Well location references are based upon the grid north
 meridian.
 UTM coordinates are NAD83, Zone 17, Meters.

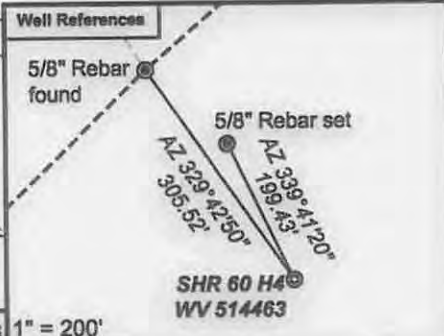
GRID NORTH



Lease No. 125951

Lease No.	Acres	Owner
126164	113	Stephen Seckman, et. al.
126124	60	Donald Bible, et. al.
126192	22	Sue E. Costlow

- Proposed Gas Well
- Located Corner, as noted
- Surface Tract Lines
- Reference Line
- Lease Boundary
- Creek or Drain
- WV County Route
- WV State Route



I, the undersigned, hereby certify that this plat is correct to the best of my knowledge and belief and shows all the information required by law and the regulations issued and prescribed by the Department of Environmental Protection.

Ben Singleton
 P.S. 2092



FILE NO: 208-13
 DRAWING NO: 208-13 SHR 60 H4
 SCALE: 1" = 2000'
 MINIMUM DEGREE OF ACCURACY: 1:2500
 PROVEN SOURCE OF ELEVATION: NGS CORN Station

STATE OF WEST VIRGINIA
 DEPARTMENT OF ENVIRONMENTAL PROTECTION
OIL AND GAS DIVISION

DATE: March 18 20 15
 OPERATOR'S WELL NO.: WV 514463
 API WELL NO
 47 - 95 - 02220
 STATE COUNTY PERMIT

WELL TYPE: OIL GAS LIQUID INJECTION WASTE DISPOSAL
 (IF GAS) PRODUCTION: STORAGE DEEP SHALLOW
 LOCATION: ELEVATION: Ground 1,016' Proposed 1,011' WATERSHED Morrison Run of McElroy Creek QUADRANGLE: Shirley
 DISTRICT: McElroy COUNTY: Tyler
 SURFACE OWNER: Vivian J. Wells, et al. ACREAGE: 35.38
 ROYALTY OWNER: George Birklein, et al. LEASE NO: 126101 ACREAGE: 240
 PROPOSED WORK: DRILL CONVERT DRILL DEEPER FRACTURE OR STIMULATE PLUG OFF OLD FORMATION
 PERFORATE NEW FORMATION OTHER PHYSICAL CHANGE IN WELL (SPECIFY) _____
 PLUG AND ABANDON CLEAN OUT AND REPLUG TARGET FORMATION: Marcellus ESTIMATED DEPTH: TVD 6,634'

WELL OPERATOR: EQT Production Company DESIGNATED AGENT: Rex C. Ray
 ADDRESS: 115 Professional Place PO Box 280 ADDRESS: 115 Professional Place PO Box 280
Bridgeport, WV 26330 Bridgeport, WV 26330

03/27/2015

H6A

Topo Quad: Shirley 7.5'

Scale: 1" = 4700' 9 5 0 2 2 2 0

County: Tyler

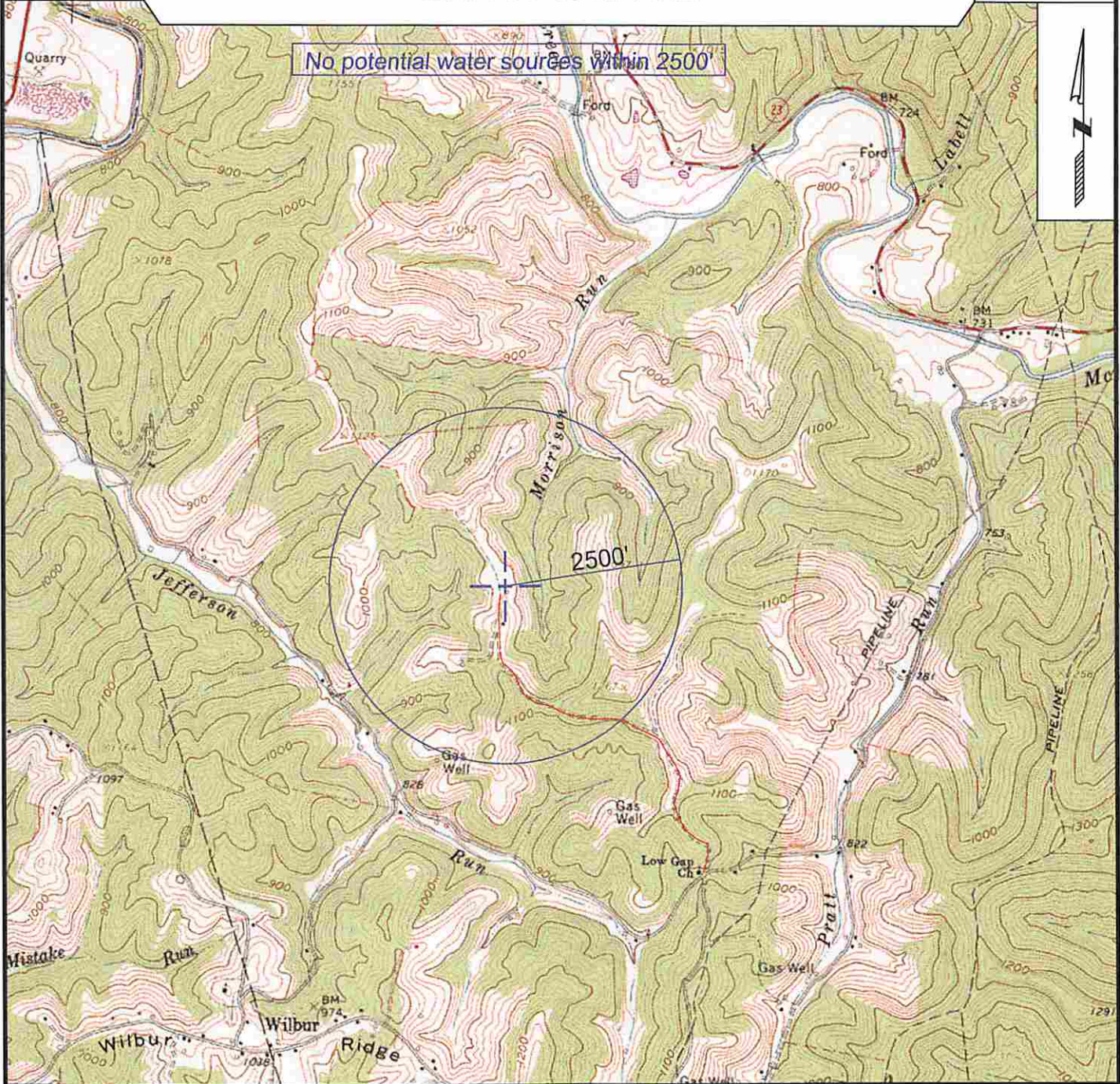
Date: October 30, 2014

District: McElroy

Project No: 208-12-C-13

Water

SHR 60 Well PAD



SURVEYING AND MAPPING SERVICES PERFORMED BY:

ALLEGHENY SURVEYS, INC.

1-800-482-8606
 237 Birch River Road
 Birch River, WV 26610
 PH: (304) 649-8606
 FAX: (304) 649-8608

PREPARED FOR:

Received by **EQT Production Company**
 Office of Oil & Gas
 P.O. Box 280
 Bridgeport, WV 26330

NOV 17 2014