

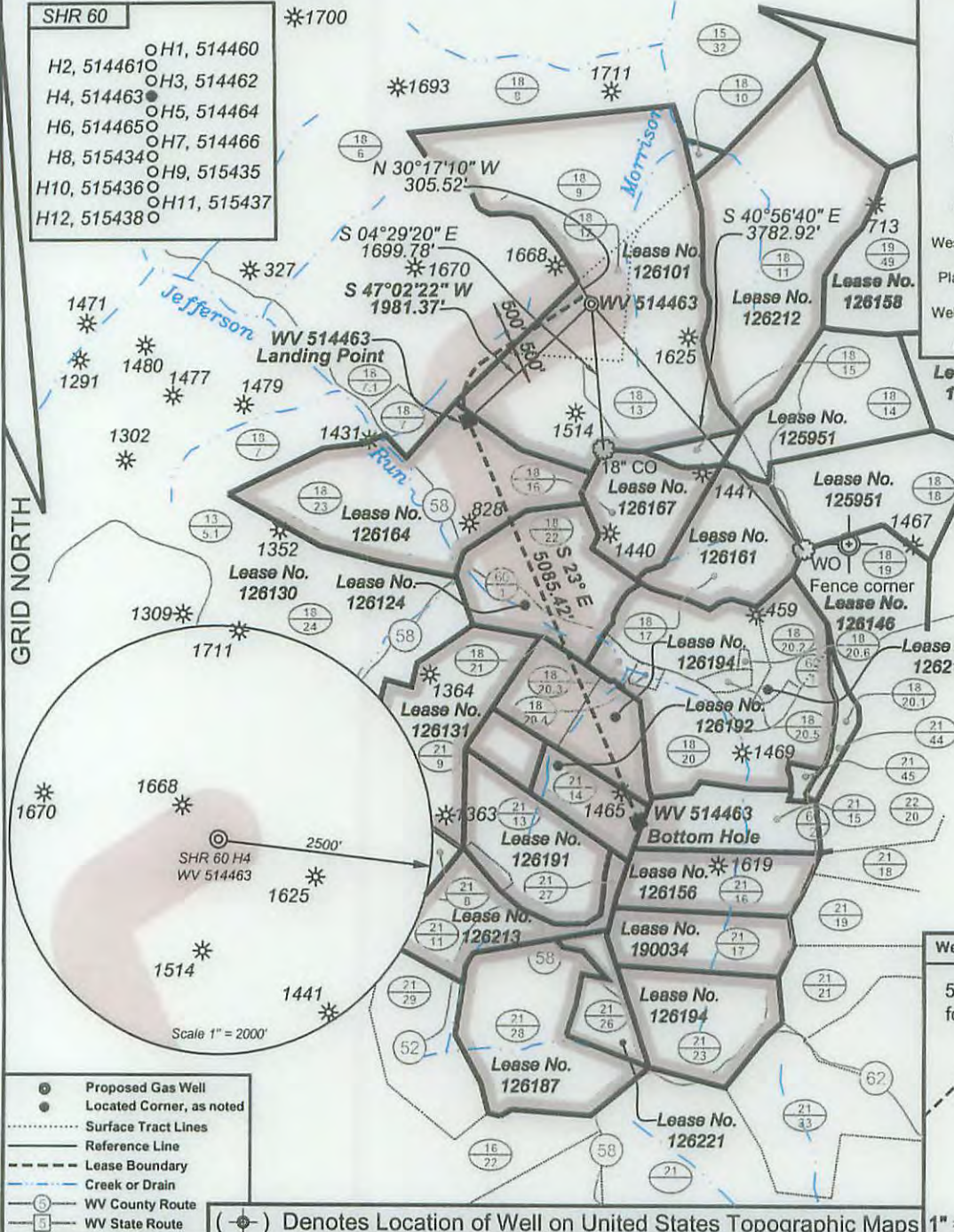
SHR 60
WV 514463
EQT Production Company

LATITUDE 39 - 25 - 00
LONGITUDE 80 - 47 - 30

- SHR 60
- H1, 514460
 - H2, 514461
 - H3, 514462
 - H4, 514463
 - H5, 514464
 - H6, 514465
 - H7, 514466
 - H8, 515434
 - H9, 515435
 - H10, 515436
 - H11, 515437
 - H12, 515438

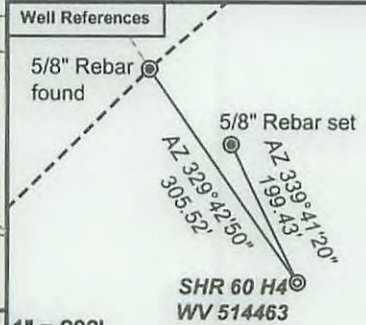
Notes:
WV 514463 coordinates are
NAD 27 N: 328,537.09 E: 1,629,439.07
NAD 27 Lat: 39.394604 Long: -80.811236
NAD 83 UTM N: 4,360,593.68 E: 516,269.06
WV 514463 Landing Point coordinates are
NAD 27 N: 327,186.79 E: 1,627,989.06
NAD 27 Lat: 39.390838 Long: -80.816296
NAD 83 UTM N: 4,360,174.92 E: 515,834.18
WV 514463 Bottom Hole coordinates are
NAD 27 N: 322,505.64 E: 1,629,976.09
NAD 27 Lat: 39.378067 Long: -80.809025
NAD 83 UTM N: 4,358,758.91 E: 516,463.33

West Virginia Coordinate system of 1927 (North Zone) based upon Differential GPS Measurements. Plat orientation, corner and well ties are based upon the grid north meridian. Well location references are based upon the grid north meridian.
UTM coordinates are NAD83, Zone 17, Meters.



Lease No.	Acres	Owner
126164	113	Stephen Seckman, et. al.
126124	60	Donald Bible, et. al.
126194	45	Mark A. Stack, et. al.
126192	22	Sue E. Costlow

Lease No. 125951

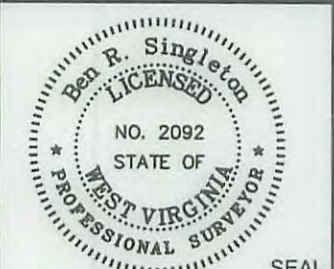


- Proposed Gas Well
 - Located Corner, as noted
 - Surface Tract Lines
 - Reference Line
 - Lease Boundary
 - Creek or Drain
 - WV County Route
 - WV State Route
- (⊙) Denotes Location of Well on United States Topographic Maps 1" = 200'



I, the undersigned, hereby certify that this plat is correct to the best of my knowledge and belief and shows all the information required by law and the regulations issued and prescribed by the Department of Environmental Protection.

Ben R. Singleton
P.S. 2092



FILE NO: 208-13
DRAWING NO: 208-13 SHR 60 H4
SCALE: 1" = 2000'
MINIMUM DEGREE OF ACCURACY: 1:2500
PROVEN SOURCE OF ELEVATION: NGS CORS Station

STATE OF WEST VIRGINIA
DEPARTMENT OF ENVIRONMENTAL PROTECTION
OIL AND GAS DIVISION

DATE: January 5 20 16
OPERATOR'S WELL NO.: WV 514463
API WELL NO
47 - 95 - 02220
STATE COUNTY PERMIT

WELL TYPE: OIL GAS LIQUID INJECTION WASTE DISPOSAL
(IF GAS) PRODUCTION: STORAGE DEEP SHALLOW
LOCATION: ELEVATION: ^{Ground 1,018'} Proposed 1,011' WATERSHED Morrison Run of McElroy Creek QUADRANGLE: Shirley
DISTRICT: McElroy COUNTY: Tyler
SURFACE OWNER: Vivian J. Wells, et al. ACREAGE: 35.38
ROYALTY OWNER: George Birklein, et al. LEASE NO: 126101 ACREAGE: 240
PROPOSED WORK: DRILL CONVERT DRILL DEEPER FRACTURE OR STIMULATE PLUG OFF OLD FORMATION
 PERFORATE NEW FORMATION OTHER PHYSICAL CHANGE IN WELL (SPECIFY)
 PLUG AND ABANDON CLEAN OUT AND REPLUG TARGET FORMATION: Marcellus ESTIMATED DEPTH: TVD 6,596'

WELL OPERATOR: EQT Production Company DESIGNATED AGENT: Rex C. Ray
ADDRESS: 115 Professional Place PO Box 280 ADDRESS: 115 Professional Place PO Box 280
Bridgeport, WV 26330 Bridgeport, WV 26330