

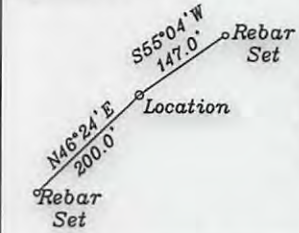
References

LATITUDE 39-30-00 N

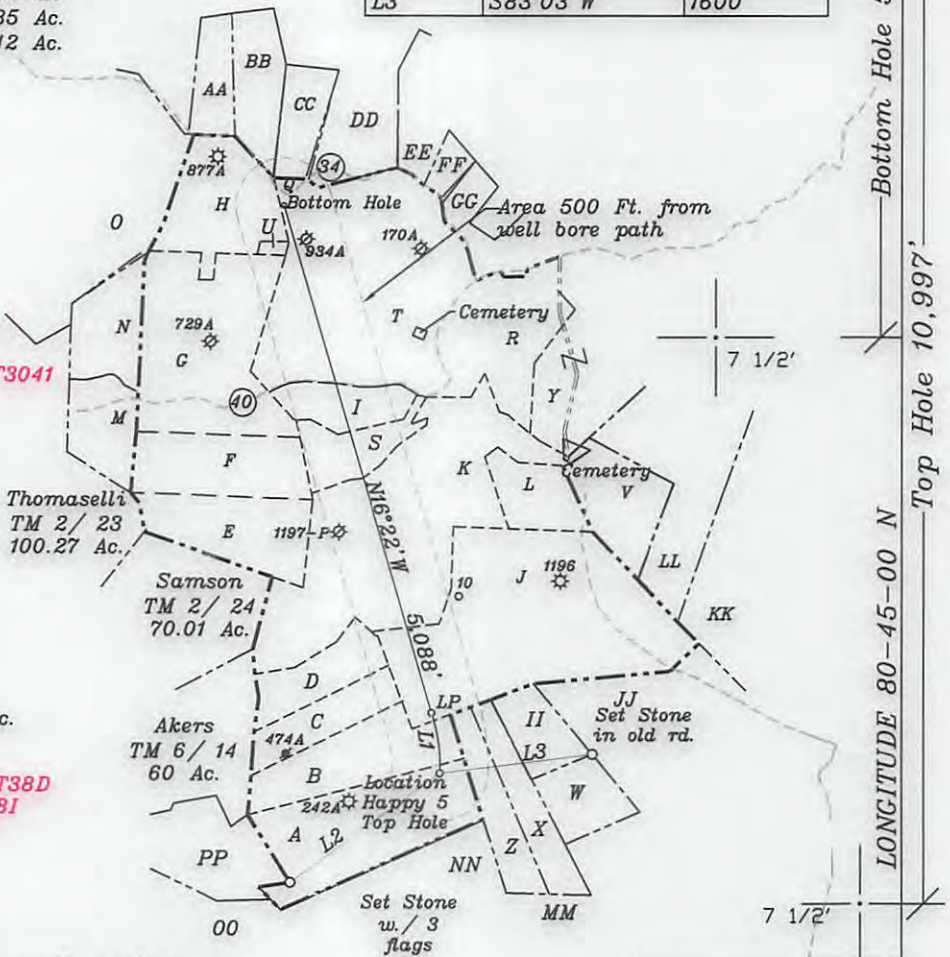
Bottom Hole 1,938'

- II- Thompson TM 7-4 11.66 Ac.
- JJ- Jay Bee Royalty TM 7-1 46.84 Ac.
- KK- Weimer TM 3-23 102 Ac.
- LL- Weimer TM 3-22 6.22 Ac.
- MM- Thompson TM 7/23 15.34 Ac.
- NN- Eidle TM 7/17 23.73 Ac.
- OO- Samson TM 6/20 85 Ac.
- PP- Samson TM 6/19 42 Ac.

NUMBER	DIRECTION	DISTANCE
L1	N10°59'W	1020'
L2	N53°53'E	1928'
L3	S83°03'W	1600'

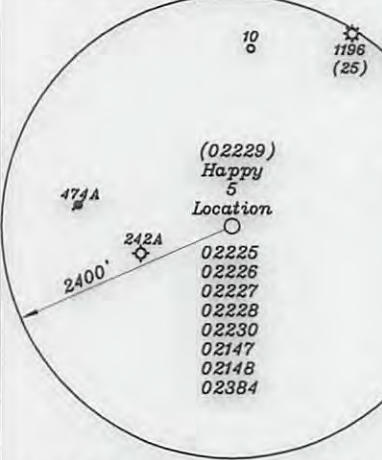


- A- Bloom TM 6/18 59.76 Ac. T3042A1
- B- Eidle TM 6/17 26.36 Ac. T3042A1
- C- Bouser TM 6/16 15.82 Ac.
- D- McHenry TM 6/15 15.81 Ac.
- E- Thomaselli TM 2/14 29 Ac.
- F- Jones p/o TM 2/12 31 Ac.
- G- Jones p/o TM 2/12 61 Ac. T3087A
- H- Ferrell & Doak TM 2/11 31 Ac. T3085 T6-A
- I- Pettit TM 2/31 11.5 Ac. T3209A
- J- Jay-Bee Oil & Gas, Inc TM 7/1.1 93.6 Ac. T3041
- K- R.Lemasters TM 2/26 87.06 Ac. T3086T4
- L- Bryant & Alpheus Tennent Hrs. TM 3/20 15 Acs. T3076A
- M- Rush TM 2-13 8.88 Ac. Ls. T3089
- N- Rush TM 2-13.1 23.56 Ac. Ls. T3089
- O- Parr TM 2-10 104.75 Ac. Ls. T3203
- Q- H.Lemasters TM. 2-32 1 Ac.
- R- H.Lemasters TM. 3-1 40.84 Ac.
- S- D.Lemasters TM. 2-25 29 Ac. T3209
- T- Hannen TM. 2-27 98.86 Ac. T3086A1
- U- Reservation from tract H (Bailey) 1 Ac.
- V- Bryant TM 3-21 18.66 Ac.
- W- Thompson TM 7-5 11.66 Ac.
- X- Thompson TM 7/3 17.5 Ac.
- Y- Alma Bees & Trees Farm TM 3-2 51.86 Ac.
- Z- Thompson TM 7/2 17.5 Ac.
- AA- Rick Staley et al TM 23-16 13 Ac
- BB- Rick Staley et al TM 23-17 15.5 Ac. FoutT38D
- CC- Rick Staley et al TM 23-18 13 Ac. FoutT38I
- DD- L. Lemasters TM 23-19 14.75 Ac. T6805B
- EE- Eidle TM 23-26 26.36 Ac.
- FF- Anderson TM 3-26 6.65 Ac.
- GG- Eidle TM 24-7 31.64 Ac.



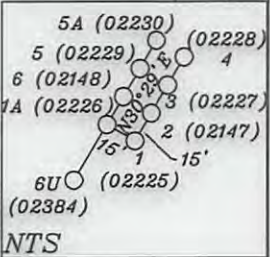
NORTH

Bottom Hole 5,113'
Top Hole 10,997'
LONGITUDE 80-45-00 N



Notes: 1) Ties to wells and corners are based on State Plane Grid North-WV North Zone NAD 27.
2) All wells within 500' of the horizontal leg are shown on this plat based upon information taken from DEP mapping, well plats & aerial photos.
3) No water wells were found within 250' of the location. No dwellings or agricultural buildings were found within 625' of the center of the well pad.

500' from Bore Path



Top Hole	UTM NAD 83 (Meters)- 4368950.7 N, 521434.4 E
Landing Point	UTM NAD 83 (Meters)- 4369254.8 N, 521370.2 E
Bottom Hole	UTM NAD 83 (Meters)- 4370734.9 N, 520908.7 E

(+) DENOTES LOCATION OF WELL ON UNITED STATES TOPOGRAPHIC MAPS

FILE NO. _____
 DRAWING NO. 1
 SCALE 1" = 2000'
 MINIMUM DEGREE OF ACCURACY 1 in 200
 PROVEN SOURCE OF ELEVATION GPS
submeter unit

I THE UNDERSIGNED, HEREBY CERTIFY THAT THIS PLAT IS CORRECT TO THE BEST OF MY KNOWLEDGE AND BELIEF AND SHOWS ALL THE INFORMATION REQUIRED BY LAW AND THE REGULATIONS ISSUED AND PRESCRIBED BY THE DEPARTMENT OF ENERGY.
 (SIGNED) David L Jackson
 R.P.E. _____ P.S. 708



STATE OF WEST VIRGINIA
 Division of Environmental Protection
 OFFICE OF OIL AND GAS

DATE February 21, 2017
 OPERATOR'S WELL NO. Happy 5
 API WELL NO. _____

WELL TYPE: OIL GAS X LIQUID INJECTION WASTE DISPOSAL 47 - 095 - 02229 MOD
 (IF "GAS") PRODUCTION X STORAGE DEEP SHALLOW X STATE COUNTY PERMIT H6A

LOCATION: ELEVATION 1253.5' WATER SHED Walnut Fork & Woodburn Run
 DISTRICT McElroy COUNTY Tyler
 QUADRANGLE TH Shirley 7 1/2', BH Center Point 7 1/2'

SURFACE OWNER Arthur & Lois Bloom ACREAGE 59.76 ac.
 OIL & GAS ROYALTY OWNER John Lambert Ice LEASE ACREAGE 498.14 ac.

02/25/2017

LEASE NO. & ACREAGE: "See ownership list above for lease numbers"

PROPOSED WORK: DRILL X CONVERT _____ DRILL DEEPER _____ REDRILL _____ FRACTURE OR STIMULATE X PLUG OFF OLD FORMATION _____ PERFORATE NEW FORMATION X OTHER PHYSICAL CHANGE IN WELL (SPECIFY) _____

PLUG AND ABANDON _____ CLEAN OUT AND REPLUG _____

TARGET FORMATION Marcellus ESTIMATED DEPTH TVD=7,255 - TMD=13,863' +
 WELL OPERATOR Jay-Bee Oil & Gas, Inc. DESIGNATED AGENT Randy Broda
 ADDRESS 1720 Rt. 22, East Union, NJ 07083 ADDRESS 3570 Shields Hill Rd., Cairo, WV 26337