

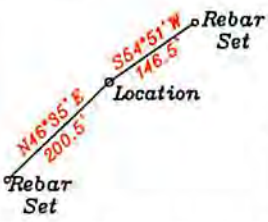
LATITUDE 39-30-00 N

Bottom Hole 1,833'

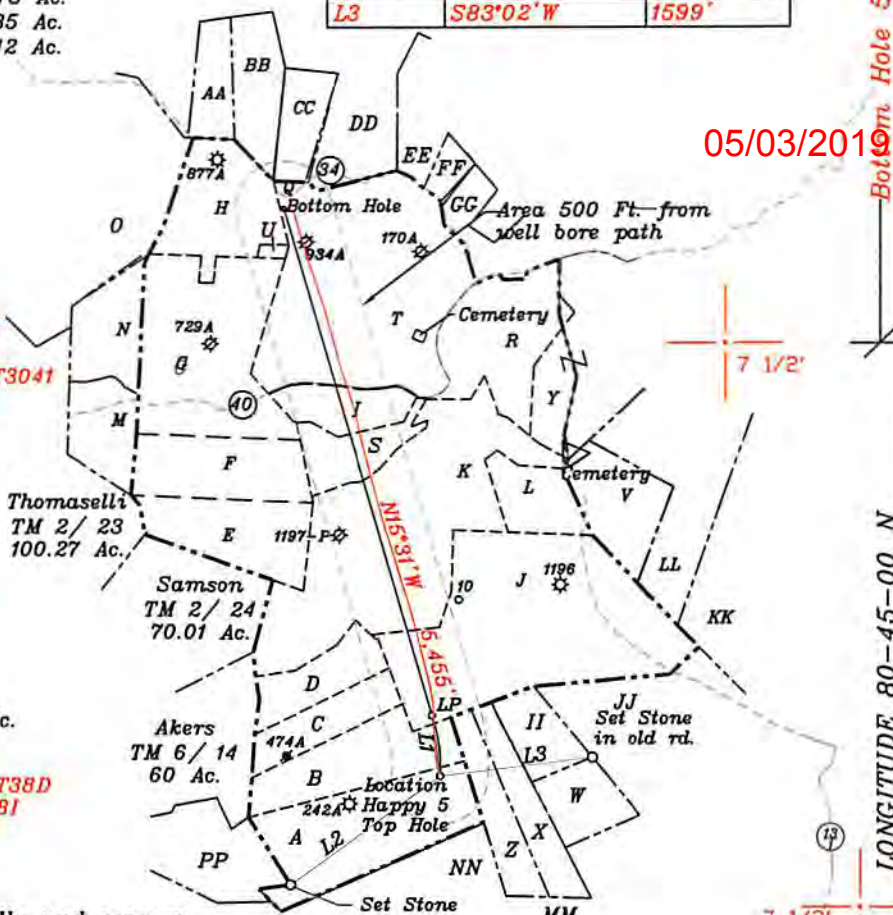
References

- II- Thompson TM 7-4 11.66 Ac.
- JJ- Jay Bee Royalty TM 7-1 46.84 Ac.
- KK- Weimer TM 3-23 102 Ac.
- LL- Weimer TM 3-22 6.22 Ac.
- MM- Thompson TM 7/23 15.34 Ac.
- NN- Eidle TM 7/17 23.73 Ac.
- OO- Samson TM 6/20 85 Ac.
- PP- Samson TM 6/19 42 Ac.

NUMBER	DIRECTION	DISTANCE
L1	N06°12'W	598'
L2	N53°54'E	1929'
L3	S83°02'W	1599'



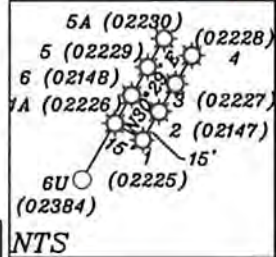
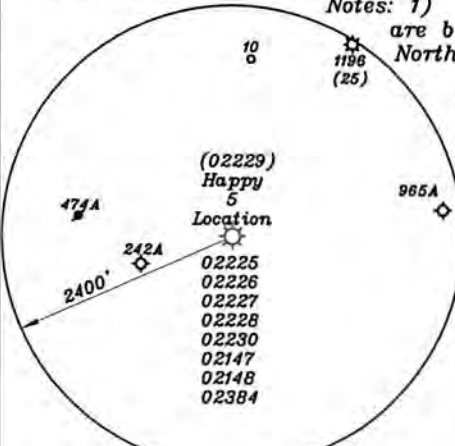
- A- Bloom TM 6/18 59.76 Ac. T3042A1
- B- Eidle TM 6/17 26.36 Ac. T3042A1
- C- Bouser TM 6/16 15.82 Ac.
- D- McHenry TM 6/15 15.81 Ac.
- E- Thomaselli TM 2/14 29 Ac.
- F- Jones p/o TM 2/12 31 Ac.
- G- Jones p/o TM 2/12 61 Ac. T3087A
- H- Ferrell & Doak TM 2/11 31 Ac. T3085 T6-A
- I- Pettit TM 2/31 11.5 Ac. T3209A
- J- Jay-Bee Oil & Gas, Inc TM 7/1.1 93.6 Ac. T3041
- K- R.Lemasters TM 2/26 87.06 Ac. T3086T4
- L- Bryant & Alpheus Tennent Hrs. TM 3/20 15 Acs. T3076A
- M- Rush TM 2-13 8.88 Ac. Ls. T3089
- N- Rush TM 2-13.1 23.56 Ac. Ls. T3089
- O- Parr TM 2-10 104.75 Ac. Ls. T3203
- Q- H.Lemasters TM. 2-32 1 Ac.
- R- H.Lemasters TM. 3-1 40.84 Ac.
- S- D.Lemasters TM. 2-25 29 Ac. T3209
- T- Hannen TM. 2-27 98.86 Ac. T3086A1
- U- Reservation from tract H (Bailey) 1 Ac.
- V- Bryant TM 3-21 18.66 Ac.
- W- Thompson TM 7-5 11.66 Ac.
- X- Thompson TM 7/3 17.5 Ac.
- Y- Alma Bees & Trees Farm TM 3-2 51.86 Ac.
- Z- Thompson TM 7/2 17.5 Ac.
- AA- Rick Staley et al TM 23-16 13 Ac
- BB- Rick Staley et al TM 23-17 15.5 Ac. FoutT38D
- CC- Rick Staley et al TM 23-18 13 Ac. FoutT38I
- DD- L. Lemasters TM 23-19 14.75 Ac. T6805B
- EE- Eidle TM 23-26 26.36 Ac.
- FF- Anderson TM 3-26 6.65 Ac.
- GG- Eidle TM 24-7 31.64 Ac.



NORTH

LONGITUDE 80-45-00 N

- Notes: 1) Ties to wells and corners are based on State Plane Grid North-WV North Zone NAD 27.
- 2) All wells within 500' of the horizontal leg are shown on this plat based upon information taken from DEP mapping, well plats & aerial photos.
- 3) No water wells were found within 250' of the location. No dwellings or agricultural buildings were found within 625' of the center of the well pad.



AS-DRILLED LEG
PROPOSED LEG

AsDrilled	Proposed
Top Hole UTM NAD 83(Meters)- 4368950.7 N, 521434.6 E	Top Hole UTM NAD 83(Meters)- 4368950.7 N, 521434.4 E
Landing Point UTM NAD 83(Meters)- 4369131.4 N, 521411.9 E	Landing Point UTM NAD 83(Meters)- 4369254.8 N, 521370.2 E
Bottom Hole UTM NAD 83(Meters)- 4370725.2 N, 520940.5 E	Bottom Hole UTM NAD 83(Meters)- 4370734.9 N, 520908.7 E

(+) DENOTES LOCATION OF WELL ON UNITED STATES TOPOGRAPHIC MAPS

FILE NO. _____
DRAWING NO. 1
SCALE 1" = 2000'
MINIMUM DEGREE OF ACCURACY 1 in 200
PROVEN SOURCE OF ELEVATION GPS
submeter unit

I THE UNDERSIGNED, HEREBY CERTIFY THAT THIS PLAT IS CORRECT TO THE BEST OF MY KNOWLEDGE AND BELIEF AND SHOWS ALL THE INFORMATION REQUIRED BY LAW AND THE REGULATIONS ISSUED AND PRESCRIBED BY THE DEPARTMENT OF ENERGY.

(SIGNED) David L Jackson
R.P.E. _____ P.S. 708



STATE OF WEST VIRGINIA
Division of Environmental Protection
OFFICE OF OIL AND GAS

DATE December 29, 2017
OPERATOR'S WELL NO. Happy 5
API WELL NO. AsDrilled

WELL TYPE: OIL X GAS X LIQUID INJECTION WASTE DISPOSAL 47 095 02229
(IF 'GAS') PRODUCTION STORAGE DEEP SHALLOW X STATE COUNTY PERMIT

LOCATION: ELEVATION 1256.6' WATER SHED Walnut Fork & Woodburn Run
DISTRICT McElroy COUNTY Tyler
QUADRANGLE TH Shirley 7 1/2', BH Center Point 7 1/2'

SURFACE OWNER Arthur & Lois Bloom ACREAGE 59.76 ac.
OIL & GAS ROYALTY OWNER John Lambert Ice LEASE ACREAGE 498.14 ac.

LEASE NO. & ACREAGE: "See ownership list above for lease numbers"

PROPOSED WORK: DRILL CONVERT DRILL DEEPER REDRILL FRACTURE OR STIMULATE PLUG OFF OLD FORMATION PERFORATE NEW FORMATION X OTHER PHYSICAL CHANGE IN WELL (SPECIFY)

PLUG AND ABANDON CLEAN OUT AND REPLUG

TARGET FORMATION Marcellus ESTIMATED DEPTH TVD=7.064' - TMD=12.853'

WELL OPERATOR Jay-Bee Oil & Gas, Inc. DESIGNATED AGENT Randy Broda
ADDRESS 1720 Rt, 22, East Union, NJ 07083 ADDRESS 3570 Shields Hill Rd., Cairo, WV 26337

RECEIVED
Office of Oil and Gas

MAR 04 2019

WV Department of Environmental Protection
AsDrilled