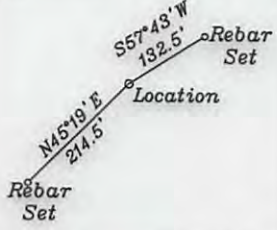


References

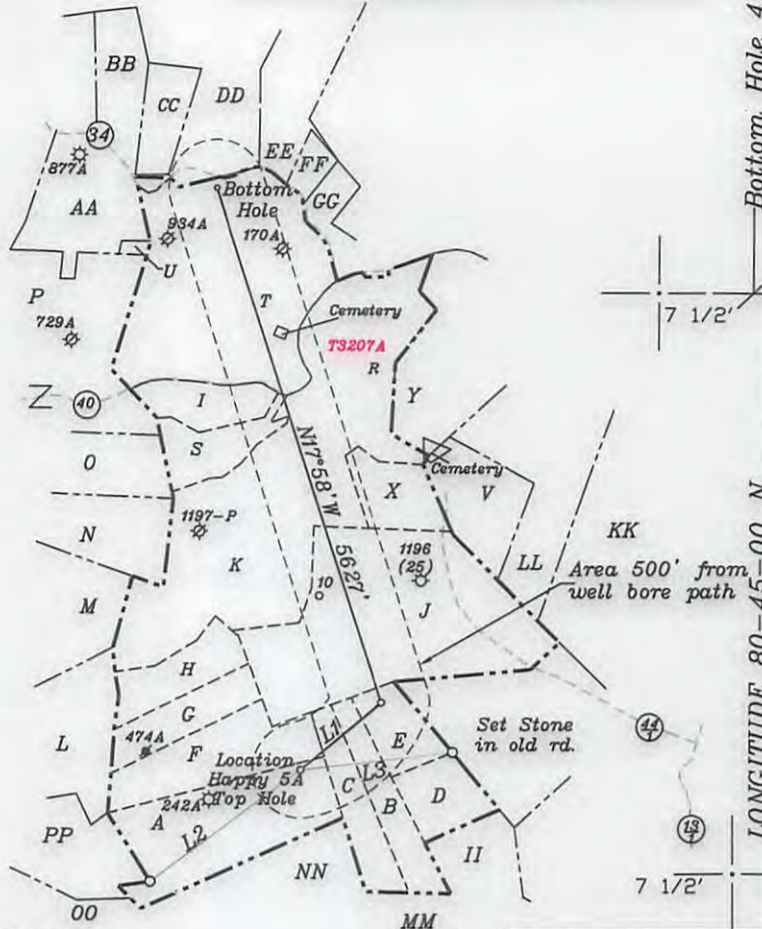
LATITUDE 39-30-00 N

- V- Bryant TM 3-21 18.66 Ac
- X- Bryant & Alpheus Tennent Hrs. TM 3-20 15 Ac. **T3076A**
- Y- Alma Bees & Trees Farm TM 3-2 51.86 Ac.

NUMBER	DIRECTION	DISTANCE
L1	N50°18' E	1091'
L2	N53°43' E	1942'
L3	S83°28' W	1591'

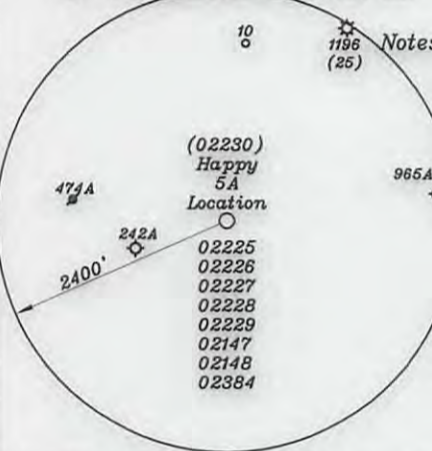


- A- Bloom TM 6/18 59.76 Ac. **T3042A1**
- B- Thompson TM 7/3 17.5 Ac. **T3040 & T3041AA**
- C- Thompson TM 7/2 17.5 Ac. **T3040 & T3041AA**
- D- Thompson TM 7/5 11.66 Ac.
- E- Thompson TM 7/4 11.66 Ac. **T3040 & T3041AA**
- F- Eidle TM 6/17 26.36 Ac. **T3042A1**
- G- Bowser TM 6/16 15.82 Ac.
- H- McHenry TM 6/15 15.81 Ac.
- I- Pettit TM 2/31 11.5 Ac. **T3209A**
- J- Jay-Bee Oil & Gas TM 7/1.1 93.6 Ac. **T3041**
- K- R.Lemasters TM 2/26 87.06 Ac. **T3086T4**
- L- Akers TM 6/14 60 Ac. **T3042**
- M- Samson TM 2/24 70.10 Ac. **T3095A**
- N- Thomaselli TM 2/14 29 Ac. **T3088**
- O- Jones p/o TM 2/12 31 Ac. **T3087B**
- P- Jones p/o TM 2/12 61 Ac. **T3087A**
- Q- H.Lemasters TM. 2-32 1 Ac.
- R- H.Lemasters TM. 3-1 40.84 Ac.
- S- D.Lemasters TM. 2-25 29 Ac. **T3209**
- T- Hanner TM. 2-27 98.86 Ac. **T3086A1**
- U- Reservation from tract AA (Bailey) 1 Ac.
- AA- Ferrell & Doak TM 2/11 31 Ac. **T3085 T6A**
- BB- Rick Staley et al TM 23-17 15.5 Ac. **FoutT38D**
- CC- Rick Staley et al TM 23-18 13 Ac. **FoutT38I**
- DD- L. Lemasters TM 23-19 14.75 Ac. **T6805B**
- EE- Eidle TM 23-26 26.36 Ac.
- FF- Anderson TM 3-26 6.65 Ac.
- GG- Eidle TM 24-7 31.64 Ac.
- HH- Thompson TM 7-3 17.5 Ac.
- II- Thompson TM 7-6 11.66 Ac.
- JJ- Jay Bee Royalty TM 7-1 46.84 Ac.
- KK- Weimer TM 3-23 102 Ac.
- LL- Weimer TM 3-22 6.22 Ac.



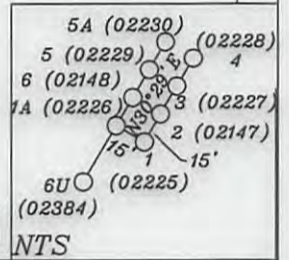
NORTH

Bottom Hole 4,924'  
Top Hole 10,984'  
LONGITUDE 80-45-00 N



- Notes: 1) Ties to wells and corners are based on State Plane Grid North-WV North Zone NAD 27.
- 2) All wells within 500' of the horizontal leg are shown on this plat based upon information taken from DEP mapping, well plats & aerial photos.
- 3) No water wells were found within 250' of the location. No dwellings or agricultural buildings were found within 625' of the center of the well pad.

- MM- Thompson TM 7/23 15.34 Ac.
- NN- Eidle TM 7/17 23.73 Ac.
- OO- Samson TM 6/20 85 Ac.
- PP- Samson TM 6/19 42 Ac. **T3039E**



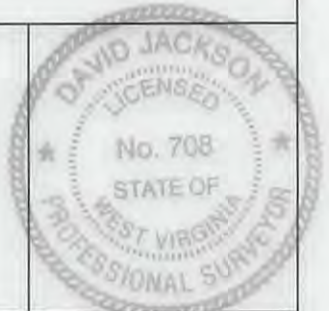
Top Hole	UTM NAD 83 (Meters)- 4368954.7 N, 521436.7 E
Landing Point	UTM NAD 83 (Meters)- 4369171.2 N, 521688.8 E
Bottom Hole	UTM NAD 83 (Meters)- 4370793.2 N, 521132.8 E

(+) DENOTES LOCATION OF WELL ON UNITED STATES TOPOGRAPHIC MAPS

FILE NO. \_\_\_\_\_  
DRAWING NO. 1  
SCALE 1" = 2000'  
MINIMUM DEGREE OF ACCURACY 1 in 200  
PROVEN SOURCE OF ELEVATION GPS  
submeter unit

I THE UNDERSIGNED, HEREBY CERTIFY THIS PLAT IS CORRECT TO THE BEST OF MY KNOWLEDGE AND BELIEF AND SHOWS ALL THE INFORMATION REQUIRED BY LAW AND THE REGULATIONS ISSUED AND PRESCRIBED BY THE DEPARTMENT OF ENERGY.

(SIGNED) David L Jackson  
R.P.E. \_\_\_\_\_ P.S. 708



STATE OF WEST VIRGINIA  
Division of Environmental Protection  
OFFICE OF OIL AND GAS

DATE February 21, 2017  
OPERATOR'S WELL NO. Happy 5A  
API WELL NO. \_\_\_\_\_

WELL TYPE: OIL GAS  LIQUID INJECTION \_\_\_\_\_ WASTE DISPOSAL \_\_\_\_\_ 47 - 095 - 02230 MOD  
(IF "GAS") PRODUCTION  STORAGE \_\_\_\_\_ DEEP \_\_\_\_\_ SHALLOW \_\_\_\_\_ STATE COUNTY PERMIT H6A

LOCATION: ELEVATION 1253.5' WATER SHED Walnut Fork & Woodburn Run  
DISTRICT McElroy COUNTY Tyler  
QUADRANGLE TH Shirley 7 1/2', BH Center Point 7 1/2'

SURFACE OWNER Arthur & Lois Bloom ACREAGE 59.76 ac.  
OIL & GAS ROYALTY OWNER John Lambert Ice LEASE ACREAGE 452.8 ac.

02/25/2017

LEASE NO. & ACREAGE: "See ownership list above for lease numbers"

PROPOSED WORK: DRILL  CONVERT \_\_\_\_\_ DRILL DEEPER \_\_\_\_\_ REDRILL \_\_\_\_\_ FRACTURE OR STIMULATE  PLUG OFF OLD FORMATION \_\_\_\_\_ PERFORATE NEW FORMATION  OTHER PHYSICAL CHANGE IN WELL (SPECIFY) \_\_\_\_\_

PLUG AND ABANDON \_\_\_\_\_ CLEAN OUT AND REPLUG \_\_\_\_\_  
TARGET FORMATION Marcellus ESTIMATED DEPTH TVD=7,255 - TMD=14,473' +  
WELL OPERATOR Jay-Bee Oil & Gas, Inc. DESIGNATED AGENT Randy Broda  
ADDRESS 1720 Rt. 22, East Union, NJ 07083 ADDRESS 3570 Shields Hill Rd., Cairo, WV 26337