

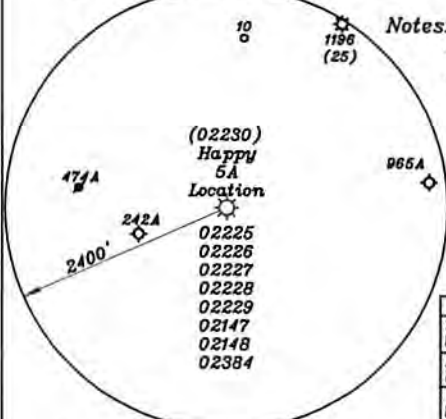
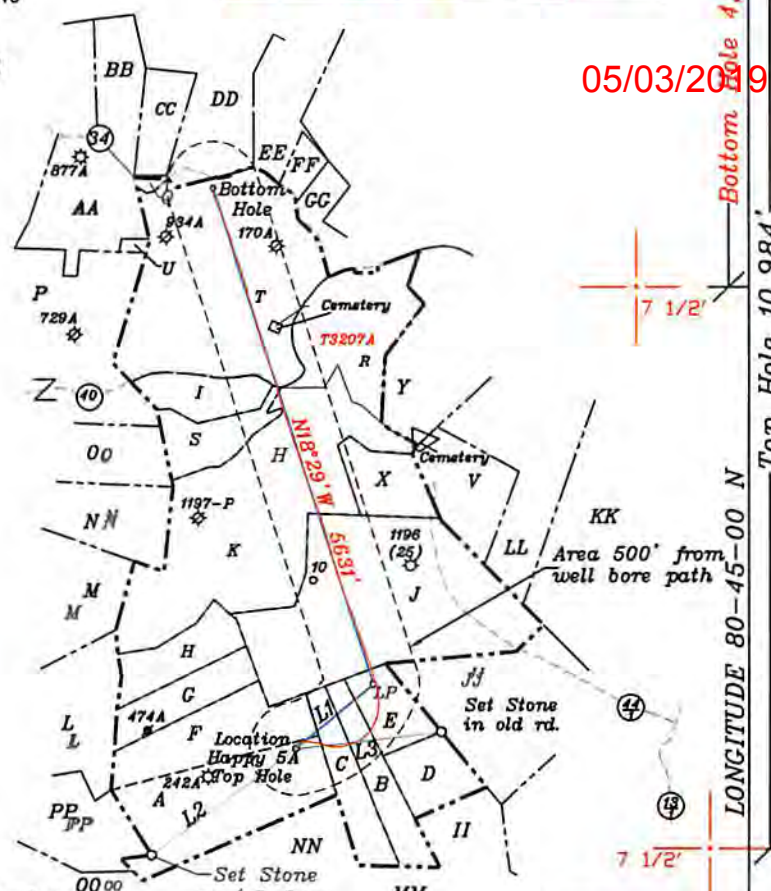
LATITUDE 39-30-00 N

V- Bryant TM 3-21 18.66 Ac
 X- Bryant & Alpheus Tennent Hrs. TM 3-20 15 Ac. T3076A
 Y- Alma Bees & Trees Farm TM 3-2 51.86 Ac.

3) No water wells were found within 250' of the location. No dwellings or agricultural buildings were found within 625' of the center of the well pad.

NUMBER	DIRECTION	DISTANCE
L1	N50°46' E	1118'
L2	N53°43' E	1942'
L3	S83°28' W	1591'

- A- Bloom TM 6/18 59.76 Ac. T3042A1
- B- Thompson TM 7/3 17.5 Ac. T3040 & T3041AA
- C- Thompson TM 7/2 17.5 Ac. T3040 & T3041AA
- D- Thompson TM 7/5 11.66 Ac.
- E- Thompson TM 7/4 11.66 Ac. T3040 & T3041AA
- F- Eidle TM 6/17 26.36 Ac. T3042A1
- G- Bowser TM 6/16 15.82 Ac.
- H- McHenry TM 6/15 15.81 Ac.
- I- Pettit TM 2/31 11.5 Ac. T3209A
- J- Jay-Bee Oil & Gas TM 7/1.1 93.6 Ac. T3041
- K- R.Lemasters TM 2/26 87.06 Ac. T30867A
- L- Akers TM 6/14 60 Ac. T3042
- M- Samson TM 2/24 70.10 Ac. T3095A
- N- Thomaselli TM 2/14 29 Ac. T3088
- O- Jones p/o TM 2/12 31 Ac. T3087B
- P- Jones p/o TM 2/12 61 Ac. T3087A
- Q- H.Lemasters TM. 2-32 1 Ac.
- R- H.Lemasters TM. 3-1 40.84 Ac.
- S- D.Lemasters TM. 2-25 29 Ac. T3209
- T- Hannen TM. 2-27 98.86 Ac. T3086A1
- U- Reservation from tract AA (Bailey) 1 Ac.
- AA- Ferrell & Doak TM 2/11 31 Ac. T3085 T6A
- BB- Rick Staley et al TM 23-17 15.5 Ac. FoudT38D
- CC- Rick Staley et al TM 23-18 13 Ac. FoudT38I
- DD- L. Lemasters TM 23-19 14.75 Ac. T6805B
- EE- Eidle TM 23-26 26.36 Ac.
- FF- Anderson TM 3-26 6.65 Ac.
- GG- Eidle TM 24-7 31.64 Ac.
- HH- Thompson TM 7-3 17.5 Ac.
- II- Thompson TM 7-6 11.66 Ac.
- JJ- Jay Bee Royalty TM 7-1 46.84 Ac.
- KK- Weimer TM 3-23 102 Ac.
- LL- Weimer TM 3-22 6.22 Ac.



Notes: 1) Ties to wells and corners are based on State Plane Grid North-WV North Zone NAD 27.

2) All wells within 500' of the horizontal leg are shown on this plat based upon information taken from DEP mapping, well plats & aerial photos.

AS-DRILLED LEG
 PROPOSED LEG

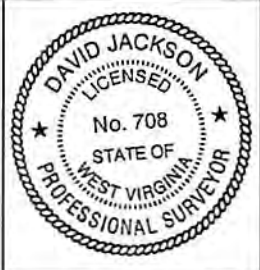
AsDrilled	Proposed
Top Hole UTM NAD 83(Meters)- 4358954.6 N, 521436.7 E	Top Hole UTM NAD 83(Meters)- 4368964.7 N, 521436.7 E
Landing Point UTM NAD 83(Meters)- 4369174.5 N, 521697.0 E	Landing Point UTM NAD 83(Meters)- 4369171.2 N, 521688.8 E
Bottom Hole UTM NAD 83(Meters)- 4370792.5 N, 521126.0 E	Bottom Hole UTM NAD 83(Meters)- 4370792.2 N, 521132.8 E

(+) DENOTES LOCATION OF WELL ON UNITED STATES TOPOGRAPHIC MAPS

FILE NO. _____
 DRAWING NO. 1
 SCALE 1" = 2000'
 MINIMUM DEGREE OF ACCURACY 1 in 200
 PROVEN SOURCE OF ELEVATION GPS
submeter unit

I THE UNDERSIGNED, HEREBY CERTIFY THIS PLAT IS CORRECT TO THE BEST OF MY KNOWLEDGE AND BELIEF AND SHOWS ALL THE INFORMATION REQUIRED BY LAW AND THE REGULATIONS ISSUED AND PRESCRIBED BY THE DEPARTMENT OF ENERGY.

(SIGNED) David L Jackson
 R.P.E. _____ P.S. 708



STATE OF WEST VIRGINIA
 Division of Environmental Protection
 OFFICE OF OIL AND GAS

DATE December 27, 2017
 OPERATOR'S WELL NO. Happy 5A
 API WELL NO. AsDrilled

WELL TYPE: OIL X GAS X LIQUID INJECTION WASTE DISPOSAL 47 095 02230
 (IF 'GAS') PRODUCTION STORAGE DEEP SHALLOW X STATE COUNTY PERMIT

LOCATION: ELEVATION 1256.4' WATER SHED Walnut Fork & Woodburn Run
 DISTRICT McElroy COUNTY Tyler
 QUADRANGLE TH Shirley 7 1/2', BH Center Point 7 1/2'

SURFACE OWNER Arthur & Lois Bloom ACREAGE 59.76 ac.
 OIL & GAS ROYALTY OWNER John Lambert Ice LEASE ACREAGE 452.8 ac.

LEASE NO. & ACREAGE: "See ownership list above for lease numbers"

PROPOSED WORK: DRILL CONVERT DRILL DEEPER REDRILL FRACTURE DR STIMULATE PLUG OFF OLD FORMATION PERFORATE NEW FORMATION X OTHER PHYSICAL CHANGE IN WELL (SPECIFY) AsDrilled
 PLUG AND ABANDON CLEAN OUT AND REPLUG

TARGET FORMATION Marcellus ESTIMATED DEPTH TVD=7,072' - TMD=13,495'
 WELL OPERATOR Jay-Bee Oil & Gas, Inc. DESIGNATED AGENT Randy Broda
 ADDRESS 1720 Rt. 22, East Union, NJ 07083 ADDRESS 3570 Shields Hill Rd., Cairo, WV 26337