

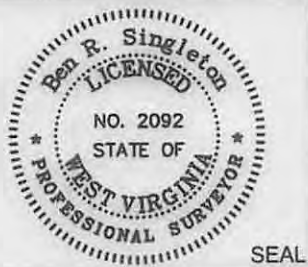
Notes:
 WV 514464 coordinates are
 NAD 27 N: 328,522.21 E: 1,629,439.06
 NAD 27 Lat: 39.394563 Long: -80.811236
 NAD 83 UTM N: 4,360,589.15 E: 516,269.14
 WV 514464 Landing Point coordinates are
 NAD 27 N: 327,646.87 E: 1,628,781.89
 NAD 27 Lat: 39.392133 Long: -80.813515
 NAD 83 UTM N: 4,360,319.13 E: 516,073.38
 WV 514464 Bottom Hole coordinates are
 NAD 27 N: 323,039.17 E: 1,630,737.74
 NAD 27 Lat: 39.379562 Long: -80.806359
 NAD 83 UTM N: 4,358,925.33 E: 516,692.66
 West Virginia Coordinate system of 1927 (North Zone) based upon Differential GPS Measurements. Plat orientation, corner and well ties are based upon the grid north meridian. Well location references are based upon the grid north meridian. UTM coordinates are NAD83, Zone 17, Meters.

Lease No.	Acres	Owner
126164	113	Stephen Seckman, et. al.
126167	43	James D. Spencer, et. al.
126124	60	Donald Bible, et. al.
126211	145	John A. Dillon, et. al.



I, the undersigned, hereby certify that this plat is correct to the best of my knowledge and belief and shows all the information required by law and the regulations issued and prescribed by the Department of Environmental Protection.

Ben R. Singleton
 P.S. 2092



FILE NO: 208-13
 DRAWING NO: 208-13 SHR 60 H5
 SCALE: 1" = 2000'
 MINIMUM DEGREE OF ACCURACY: 1:2500
 PROVEN SOURCE OF ELEVATION: NGS CORS Station

STATE OF WEST VIRGINIA
 DEPARTMENT OF ENVIRONMENTAL PROTECTION
OIL AND GAS DIVISION

DATE: April 23 20 15
 OPERATOR'S WELL NO.: 514464
 API WELL NO
 47 - 95 - 02256
 STATE COUNTY PERMIT

WELL TYPE: OIL GAS LIQUID INJECTION WASTE DISPOSAL
 (IF GAS) PRODUCTION: STORAGE DEEP SHALLOW
 LOCATION: ELEVATION: Ground 1,018' Proposed 1,011' WATERSHED Morrison Run of McElroy Creek QUADRANGLE: Shirley
 DISTRICT: McElroy COUNTY: Tyler
 SURFACE OWNER: Vivian J. Wells, et al. ACREAGE: 36.58
 ROYALTY OWNER: George Bircklein, et al. LEASE NO: 126101 ACREAGE: 240
 PROPOSED WORK: DRILL CONVERT DRILL DEEPER FRACTURE OR STIMULATE PLUG OFF OLD FORMATION
 PERFORATE NEW FORMATION OTHER PHYSICAL CHANGE IN WELL (SPECIFY) _____
 PLUG AND ABANDON CLEAN OUT AND REPLUG TARGET FORMATION: Marcellus ESTIMATED DEPTH: TVD 6,812'
 WELL OPERATOR: EQT Production Company DESIGNATED AGENT: Rex C. Ray
 ADDRESS: 115 Professional Place PO Box 280 ADDRESS: 115 Professional Place PO Box 280
Bridgeport, WV 26330 Bridgeport, WV 26330

07/24/2015

Topo Quad: Shirley 7.5' Scale: 1" = 1000'
 County: Tyler Date: October 30, 2014
 District: McElroy Project No: 208-12-C-13

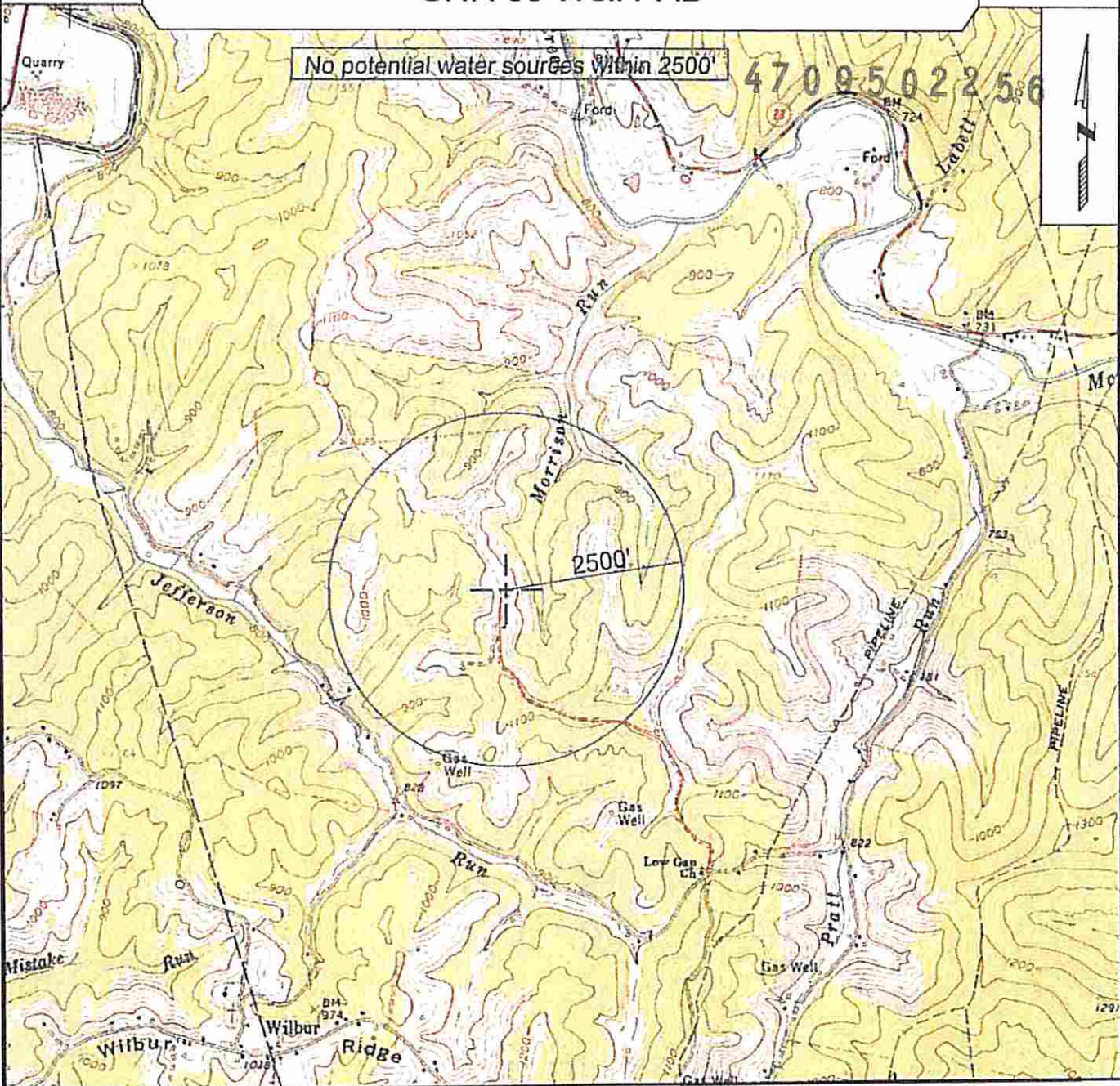
4709502256

Water

SHR 60 Well PAD

No potential water sources within 2500'

4709502256



SURVEYING AND MAPPING SERVICES PERFORMED BY:
ALLEGHENY SURVEYS, INC.
 1-800-482-8606
 237 Birch River Road
 Birch River, WV 26610
 PH: (304) 649-8606
 FAX: (304) 649-8608

PREPARED FOR:
EQT Production Company
 P.O. Box 280
 Bridgeport, WV 26330