

Well Operator's Report of Well Work



Where energy meets innovation.

RECEIVED
Office of Oil and Gas

FEB 14 2018

WV Department of
Environmental Protection

Well Number: 514461

API: 47 - 095 - 02264

Submission: Initial Amended

Notes: Final

Reviewed

State of West Virginia
Department of Environmental Protection - Office of Oil and Gas
Well Operator's Report of Well Work

API 47 - 095 - 02264 County TYLER District _____
Quad SHIRLEY Pad Name SHR60 Field/Pool Name _____
Farm name WELLS, VIVIAN J. Well Number 514461
Operator (as registered with the OOG) EQT Production Company
Address 625 Liberty Ave. EQT Plaza, Suite 1700 City Pittsburgh State PA Zip 15222

As Drilled location NAD 83/UTM Attach an as-drilled plat, profile view, and deviation survey
Top hole Northing N 4,360,602.83 Easting E 516,268.86
Landing Point of Curve Northing N 4,360,588.45 Easting E 516,463.26
Bottom Hole Northing N 4,356,699.12 Easting E 518,235.32

Elevation (ft) 1011 GL Type of Well New Existing Type of Report Interim Final
Permit Type Deviated Horizontal Horizontal 6A Vertical Depth Type Deep Shallow
Type of Operation Convert Deepen Drill Plug Back Redrilling Rework Stimulate
Well Type Brine Disposal CBM Gas Oil Secondary Recovery Solution Mining Storage Other _____
Type of Completion Single Multiple Fluids Produced Brine Gas NGL Oil Other _____
Drilled with Cable Rotary

Drilling Media Surface hole Air Mud Fresh Water Intermediate hole Air Mud Fresh Water Brine
Production hole Air Mud Fresh Water Brine

Mud Type(s) and Additive(s)

Synthetic Oil Based Mud 12.9 ppg barium sulfate, sodium chloride, xanthan gum, polyanionic cellulose, modified starch, sodium hydroxide, phosphonates and alkyl phosphates, glutaraldehyde solution, calcium hydroxide,
partially hydrolyzed polyacrylamide/polyacrylate, potassium chloride, sodium carbonate, ground walnut shells, alcohol and modified fatty acid, ferrochrome lignosulfonate, calcium carbonate, fibrous cellulose

Date permit issued 07/23/2015 Date drilling commenced 07/24/2015 Date drilling ceased 10/16/2017
Date completion activities began 10/27/2017 Date completion activities ceased 11/16/2017
Verbal plugging (Y/N) N Date permission granted N/A Granted by N/A

RECEIVED
Office of Oil and Gas
FEB 14 2018
WV Department of
Environmental Protection

Please note: Operator is required to submit a plugging application within 5 days of verbal permission to plug

Freshwater depth(s) ft 909 Open mine(s) (Y/N) depths N
Salt water depth(s) ft 1868 Void(s) encountered (Y/N) depths N
Coal depth(s) ft 22, 423, 689, 878, 1318 Cavern(s) encountered (Y/N) depths N
Is coal being mined in area (Y/N) N

Reviewed
Virginia Blum
5/10/2014

Reviewed by:
JEB

API 47-095 - 02264 Farm name WELLS, VIVIAN J. Well number 514461

CASING STRINGS	Hole Size	Casing Size	Depth	New or Used	Grade wt/ft	Basket Depth(s)	Did cement circulate (Y/N) * Provide details below*
Conductor	26"	20"	60'	NEW	A-500 94LB/FT	NONE	Y
Surface	17.5"	13.375"	1003'	NEW	J-55 54.5LB/FT	830	Y
Coal							
Intermediate 1	12.375"	9.625"	2797'	NEW	A-500 40LB/FT	1083', 1907'	Y
Intermediate 2							
Intermediate 3							
Production	8.5"	5.5"	21228'	NEW	P-110 20LB/FT	NONE	N
Tubing							
Packer type and depth set							

Comment Details _____

CEMENT DATA	Class/Type of Cement	Number of Sacks	Slurry wt (ppg)	Yield (ft ³ /sks)	Volume (ft ³)	Cement Top (MD)	WOC (hrs)
Conductor	CLASS A	90	15.6	1.18	70	0	8
Surface	CLASS A	873	15.6	1.2	1048	0	8
Coal							
Intermediate 1	CLASS A	964 / 257	15.2 / 15.6	1.25 / 1.19	1205 / 306	0	8
Intermediate 2							
Intermediate 3							
Production	CLASS H / CLASS H	388 / 1834	15.2 / 15.6	1.25 / 2.06	485 / 3778	4000'	8
Tubing							

Drillers TD (ft) 21240' MD Loggers TD (ft) N/A

Deepest formation penetrated MARCELLUS Plug back to (ft) _____

Plug back procedure _____

Kick off depth (ft) 5115' MD

Check all wireline logs run caliper density deviated/directional induction
 neutron resistivity gamma ray temperature sonic

Well cored Yes No Conventional Sidewall Were cuttings collected Yes No

DESCRIBE THE CENTRALIZER PLACEMENT USED FOR EACH CASING STRING _____

CONDUCTOR- NONE
 SURFACE- JOINTS: 1, 5, 12
 INTERMEDIATE- 6 CENTRALIZERS RAN AT LEAST EVERY 500' FEET
 PRODUCTION- 1 EVERY JOINT FROM TD TO 5115' md

RECEIVED
 Office of Oil and Gas
FEB 14 2018
 WV Department of
 Environmental Protection

WAS WELL COMPLETED AS SHOT HOLE Yes No DETAILS _____

WAS WELL COMPLETED OPEN HOLE? Yes No DETAILS _____


WERE TRACERS USED Yes No TYPE OF TRACER(S) USED _____

API 47- 095 - 02264 Farm name WELLS, VIVIAN J. Well number 514461

Drilling Contractor Savanna Drilling (Rig 655)
Address 125 Industry Road City Waynesburg State pa Zip 15370

Logging Company GYRODATA
Address 601 MAYER ST City BRIDGEVILLE State PA Zip 15017

Logging Company Baker Hughes Oilfield Operations, 
Address 837 Phillipi Pike City Clarksburg State WV Zip 26301

Cementing Company Baker Hughes Oilfield Operations, 
Address 837 Phillipi Pike City Clarksburg State WV Zip 26301

RECEIVED
Office of Oil and Gas
FEB 14 2018
WV Department of
Environmental Protection

WELL # 514461 API # 47-950-2257

Formation Name	Drill Top MD (ftKB)	Drill Top (TVD) (ftKB)	Drill Btm MD (ftKB)	Drill Btm (TVD) (ftKB)
SAND/SHALE	1	1	22	22
COAL	22	22	26	26
SAND/SHALE	26	26	423	423
COAL	423	423	427	427
SAND/SHALE	427	427	689	689
COAL	689	689	693	693
SAND/SHALE	693	693	878	878
COAL	878	878	882	882
SAND/SHALE	882	882	1,318.00	1,318.00
COAL	1,318.00	1,318.00	1,322.00	1,322.00
SAND/SHALE	1,322.00	1,322.00	1,537.00	1,536.90
MAXTON	1,537.00	1,536.90	1,590.00	1,589.90
SAND/SHALE	1,590.00	1,589.90	1,832.00	1,831.90
BIGLIME	1,832.00	1,831.90	2,114.00	2,113.90
SAND/SHALE	2,114.00	2,113.90	2,254.00	2,253.90
WEIR	2,254.00	2,253.90	2,320.00	2,319.90
SAND/SHALE	2,320.00	2,319.90	2,371.00	2,370.90
GANTZ	2,371.00	2,370.90	2,418.00	2,417.90
SAND/SHALE	2,418.00	2,417.90	2,464.00	2,463.90
50F	2,464.00	2,463.90	2,496.00	2,495.90
SAND/SHALE	2,496.00	2,495.90	2,598.00	2,597.90
30F	2,598.00	2,597.90	2,639.00	2,638.90
SAND/SHALE	2,639.00	2,638.90	2,689.00	2,688.90
GORDON	2,689.00	2,688.90	2,703.00	2,702.90
SAND/SHALE	2,703.00	2,702.90	2,894.00	2,893.90
STHSAND	2,894.00	2,893.90	2,923.00	2,922.90
SAND/SHALE	2,923.00	2,922.90	3,010.00	3,009.90
BAYARD	3,010.00	3,009.90	3,070.00	3,069.90
SAND/SHALE	3,070.00	3,069.90	3,342.00	3,341.90
WARREN	3,342.00	3,341.90	3,416.00	3,415.90
SAND/SHALE	3,416.00	3,415.90	3,436.00	3,435.90
SPEECHLEY	3,436.00	3,435.90	3,554.00	3,553.90
SAND/SHALE	3,554.00	3,553.90	3,858.00	3,857.90
BALLTOWNA	3,858.00	3,857.90	3,928.00	3,927.90
SAND/SHALE	3,928.00	3,927.90	4,551.00	4,550.80
RILEY	4,551.00	4,550.80	4,558.00	4,557.80
SAND/SHALE	4,558.00	4,557.80	4,968.00	4,967.80
BENSON	4,968.00	4,967.80	5,005.00	5,004.80
SAND/SHALE	5,005.00	5,004.80	5,225.00	5,224.20
ALEXANDER	5,225.00	5,224.20	6,465.00	6,464.80
SONYEA	6,465.00	6,286.80	6,610.00	6,396.70
MIDDLESEX	6,610.00	6,396.70	6,674.00	6,441.10
GENESSEE	6,674.00	6,441.10	6,806.00	6,519.60
GENESE0	6,806.00	6,519.60	6,870.00	6,546.40
TULLY	6,870.00	6,546.40	6,946.00	6,570.20
HAMILTON	6,946.00	6,570.20	7,017.00	6,587.20
MARCELLUS	7,017.00	6,587.20	21,240.00	6,662.40

RECEIVED
Office of Oil and Gas
FEB 14 2018
WV Department of Environmental Protection



Where energy meets innovation.

Actual Wellpath Report

SHR-60 514461 AWP Proj: 21240'

Page 1 of 16



REFERENCE WELLPATH IDENTIFICATION			
Operator	EQT	Slot	Slot 514461
Area	Tyler County, WV	Well	SHR-60 514461
Field	Tyler	Wellbore	SHR-60 514461 AWB
Facility	SHR-60 Pad		

REPORT SETUP INFORMATION			
Projection System	NAD27 / Lambert West Virginia SP, Northern Zone (4701), US feet	Software System	WellArchitect® 5.0
North Reference	Grid	User	Edsaryar
Scale	0.999949	Report Generated	13/Oct/2017 at 20:14
Convergence at slot	0.84° West	Database/Source file	WA_MPL_EASTERNUS_Defn/SHR-60_514461_AWP_Proj_21240_.xml

WELLPATH LOCATION	Local coordinates		Grid coordinates		Geographic coordinates	
	North[ft]	East[ft]	Easting[US ft]	Northing[US ft]	Latitude	Longitude
Slot Location	-15.00	0.11	1629438.73	328567.21	39°23'40.871"N	80°48'40.460"W
Facility Reference Pt			1629438.62	328582.21	39°23'41.019"N	80°48'40.465"W
Field Reference Pt			609601.22	0.00	38°23'48.753"N	84°21'09.765"W

WELLPATH DATUM			
Calculation method	Minimum curvature	Savanna 655 (RKB) to Facility Vertical Datum	1027.00ft
Horizontal Reference Pt	Slot	Savanna 655 (RKB) to Mean Sea Level	1027.00ft
Vertical Reference Pt	Savanna 655 (RKB)	Savanna 655 (RKB) to Ground Level at Slot (Slot 514461)	16.00ft
MD Reference Pt	Savanna 655 (RKB)	Section Origin	N 0.00, E 0.00 ft
Field Vertical Reference	Mean Sea Level	Section Azimuth	154.22°

RECEIVED
Office of Oil and Gas
FEB 14 2018
WV Department of
Environmental Protection



Actual Wellpath Report

SHR-60 514461 AWP Proj: 21240'

Page 2 of 16



Where energy meets innovation.

REFERENCE WELLPATH IDENTIFICATION			
Operator	EQT	Slot	Slot 514461
Area	Tyler County, WV	Well	SHR-60 514461
Field	Tyler	Wellbore	SHR-60 514461 AWB
Facility	SHR-60 Pad		

WELLPATH DATA (371 stations) † = interpolated/extrapolated station											
MD (ft)	Inclination (°)	Azimuth (°)	TVD (ft)	TVDSS (ft)	Vert Sect (ft)	North (ft)	East (ft)	DLS (°/100ft)	Build Rate (°/100ft)	Turn Rate (°/100ft)	Comments
0.00†	0.000	122.850	0.00	-1027.00	0.00	0.00	0.00	0.00	0.00	0.00	0.00
16.00	0.000	122.850	16.00	-1011.00	0.00	0.00	0.00	0.00	0.00	0.00	0.00
100.00	0.240	122.850	100.00	-927.00	0.15	-0.10	0.15	0.29	0.29	146.25	
200.00	0.240	116.330	200.00	-827.00	0.49	-0.30	0.51	0.03	0.00	-6.52	
300.00	0.130	143.150	300.00	-727.00	0.77	-0.49	0.77	0.14	-0.11	26.82	
400.00	0.070	148.600	400.00	-627.00	0.94	-0.63	0.87	0.06	-0.06	5.45	
500.00	0.080	195.120	500.00	-527.00	1.06	-0.75	0.88	0.06	0.01	46.52	
600.00	0.070	125.830	600.00	-427.00	1.16	-0.85	0.91	0.09	-0.01	-69.29	
700.00	0.030	69.360	700.00	-327.00	1.22	-0.88	0.99	0.06	-0.04	-56.47	
800.00	0.160	339.220	800.00	-227.00	1.08	-0.74	0.96	0.16	0.13	-90.14	
900.00	0.080	40.780	900.00	-127.00	0.92	-0.55	0.96	0.14	-0.08	61.56	
1000.00	0.170	54.370	1000.00	-27.00	0.86	-0.42	1.12	0.09	0.09	13.59	
1100.00	0.800	346.940	1099.99	72.99	0.16	0.35	1.09	0.75	0.63	-67.43	
1200.00	0.890	347.020	1199.98	172.98	-1.28	1.79	0.75	0.09	0.09	0.08	
1300.00	0.910	350.070	1299.97	272.97	-2.80	3.33	0.44	0.05	-0.02	3.05	
1400.00	0.890	351.520	1399.96	372.96	-4.31	4.88	0.19	0.03	-0.02	1.45	
1500.00	0.800	352.110	1499.95	472.95	-5.71	6.34	-0.02	0.09	-0.09	0.59	
1600.00	0.620	359.190	1599.94	572.94	-6.87	7.57	-0.12	0.20	-0.18	7.08	
1700.00	0.510	3.750	1699.93	672.93	-7.75	8.55	-0.10	0.12	-0.11	4.56	
1800.00	0.430	340.630	1799.93	772.93	-8.51	9.35	-0.20	0.20	-0.08	-23.12	
1900.00	0.380	323.650	1899.93	872.93	-9.21	9.97	-0.52	0.13	-0.05	-16.98	
2000.00	0.400	332.730	1999.93	972.93	-9.88	10.55	-0.87	0.06	0.02	9.08	
2100.00	0.320	329.970	2099.92	1072.92	-10.51	11.10	-1.17	0.08	-0.08	-2.76	
2200.00	0.320	318.970	2199.92	1172.92	-11.06	11.56	-1.50	0.06	0.00	-11.00	
2300.00	0.290	323.390	2299.92	1272.92	-11.57	11.97	-1.83	0.04	-0.03	4.42	
2400.00	0.240	286.360	2399.92	1372.92	-11.96	12.23	-2.18	0.17	-0.05	-37.03	
2500.00	0.280	276.700	2499.92	1472.92	-12.24	12.32	-2.63	0.06	0.04	-9.66	
2600.00	0.290	270.740	2599.92	1572.92	-12.48	12.35	-3.12	0.03	0.01	-5.96	
2700.00	0.350	267.960	2699.92	1672.92	-12.72	12.34	-3.68	0.06	0.06	-2.78	
2800.00	0.330	269.750	2799.92	1772.92	-12.96	12.33	-4.27	0.02	-0.02	1.79	

RECEIVED
Office of Oil and Gas
FEB 14 2018
WV Department of
Environmental Protection



Where energy meets innovation.

Actual Wellpath Report

SHR-60 514461 AWP Proj: 21240'

Page 3 of 16



REFERENCE WELLPATH IDENTIFICATION			
Operator	EQT	Slot	Slot 514461
Area	Tyler County, WV	Well	SHR-60 514461
Field	Tyler	Wellbore	SHR-60 514461 AWB
Facility	SHR-60 Pad		

WELLPATH DATA (371 stations)											
MD (ft)	Inclination (°)	Azimuth (°)	TVD (ft)	TVDSS (ft)	Vert Sect (ft)	North (ft)	East (ft)	DLS (°/100ft)	Build Rate (°/100ft)	Turn Rate (°/100ft)	Comments
2900.00	0.340	256.790	2899.91	1872.91	-13.15	12.26	-4.85	0.08	0.01	-12.96	
3000.00	0.360	253.440	2999.91	1972.91	-13.27	12.10	-5.44	0.03	0.02	-3.35	
3100.00	0.390	253.000	3099.91	2072.91	-13.37	11.92	-6.07	0.03	0.03	-0.44	
3200.00	0.350	247.420	3199.91	2172.91	-13.44	11.70	-6.67	0.05	-0.04	-5.58	
3300.00	0.300	243.600	3299.91	2272.91	-13.45	11.47	-7.19	0.05	-0.05	-3.82	
3400.00	0.260	238.640	3399.90	2372.90	-13.43	11.23	-7.62	0.05	-0.04	-4.96	
3500.00	0.290	234.670	3499.90	2472.90	-13.36	10.97	-8.02	0.04	0.03	-3.97	
3600.00	0.380	237.890	3599.90	2572.90	-13.28	10.64	-8.51	0.09	0.09	3.22	
3700.00	0.380	229.180	3699.90	2672.90	-13.16	10.25	-9.04	0.06	0.00	-8.71	
3800.00	0.420	217.150	3799.90	2772.90	-12.91	9.74	-9.51	0.09	0.04	-12.03	
3900.00	0.450	220.900	3899.89	2872.89	-12.59	9.15	-9.99	0.04	0.03	3.75	
4000.00	0.530	261.630	3999.89	2972.89	-12.57	8.79	-10.70	0.35	0.08	40.73	
4100.00	0.520	247.660	4099.89	3072.89	-12.74	8.55	-11.58	0.13	-0.01	-13.97	
4200.00	0.560	238.630	4199.88	3172.88	-12.71	8.12	-12.42	0.09	0.04	-9.03	
4300.00	0.730	220.470	4299.88	3272.88	-12.41	7.38	-13.25	0.26	0.17	-18.16	
4400.00	1.010	215.180	4399.86	3372.86	-11.73	6.18	-14.17	0.29	0.28	-5.29	
4500.00	1.080	210.490	4499.85	3472.85	-10.77	4.65	-15.16	0.11	0.07	-4.69	
4600.00	1.070	206.680	4599.83	3572.83	-9.68	3.00	-16.05	0.07	-0.01	-3.81	
4700.00	1.090	205.990	4699.81	3672.81	-8.53	1.31	-16.89	0.02	0.02	-0.69	
4800.00	1.120	205.600	4799.79	3772.79	-7.33	-0.43	-17.73	0.03	0.03	-0.39	
4900.00	1.180	202.860	4899.77	3872.77	-6.04	-2.26	-18.55	0.08	0.06	-2.74	
5000.00	1.120	197.600	4999.75	3972.75	-4.65	-4.14	-19.25	0.12	-0.06	-5.26	
5001.00	1.120	197.620	5000.75	3973.75	-4.63	-4.16	-19.25	0.04	0.00	2.00	
5004.00	1.120	198.530	5003.75	3976.75	-4.59	-4.21	-19.27	0.59	0.00	30.33	
5009.00	1.150	198.210	5008.75	3981.75	-4.52	-4.31	-19.30	0.61	0.60	-6.40	
5014.00	1.240	200.470	5013.75	3986.75	-4.44	-4.40	-19.34	2.03	1.80	45.20	
5019.00	1.370	199.600	5018.75	3991.75	-4.37	-4.51	-19.38	2.63	2.60	-17.40	
5024.00	1.070	201.840	5023.75	3996.75	-4.29	-4.61	-19.41	6.07	-6.00	44.80	
5029.00	0.960	199.350	5028.75	4001.75	-4.23	-4.69	-19.44	2.37	-2.20	-49.80	
5034.00	1.060	199.080	5033.75	4006.75	-4.17	-4.78	-19.47	2.00	2.00	-5.40	

RECEIVED
Office of Oil and Gas
FEB 14 2018
WV Department of
Environmental Protection



Where energy meets innovation.

Actual Wellpath Report

SHR-60 514461 AWP Proj: 21240'

Page 4 of 16



REFERENCE WELLPATH IDENTIFICATION			
Operator	EQT	Slot	Slot 514461
Area	Tyler County, WV	Well	SHR-60 514461
Field	Tyler	Wellbore	SHR-60 514461 AWB
Facility	SHR-60 Pad		

WELLPATH DATA (371 stations)											
MD (ft)	Inclination (°)	Azimuth (°)	TVD (ft)	TVDSS (ft)	Vert Sect (ft)	North (ft)	East (ft)	DLS (°/100ft)	Build Rate (°/100ft)	Turn Rate (°/100ft)	Comments
5039.00	1.240	200.300	5038.75	4011.75	-4.10	-4.87	-19.51	3.63	3.60	24.40	
5044.00	1.250	199.650	5043.74	4016.74	-4.02	-4.97	-19.54	0.35	0.20	-13.00	
5048.00	1.120	198.220	5047.74	4020.74	-3.96	-5.05	-19.57	3.33	-3.25	-35.75	
5049.00	1.330	199.600	5048.74	4021.74	-3.95	-5.07	-19.58	21.20	21.00	138.00	
5054.00	1.190	195.930	5053.74	4026.74	-3.87	-5.18	-19.61	3.23	-2.80	-73.40	
5059.00	0.820	198.040	5058.74	4031.74	-3.80	-5.26	-19.64	7.44	-7.40	42.20	
5064.00	0.810	200.330	5063.74	4036.74	-3.75	-5.33	-19.66	0.68	-0.20	45.80	
5069.00	0.960	199.760	5068.74	4041.74	-3.70	-5.40	-19.69	3.01	3.00	-11.40	
5074.00	0.970	201.670	5073.74	4046.74	-3.64	-5.48	-19.72	0.67	0.20	38.20	
5079.00	1.150	208.540	5078.74	4051.74	-3.58	-5.56	-19.76	4.40	3.60	137.40	
5084.00	1.350	202.540	5083.74	4056.74	-3.52	-5.66	-19.80	4.78	4.00	-120.00	
5089.00	0.870	201.650	5088.74	4061.74	-3.45	-5.75	-19.84	9.61	-9.60	-17.80	
5094.00	0.670	209.480	5093.74	4066.74	-3.41	-5.81	-19.87	4.51	-4.00	156.60	
5099.00	0.960	206.770	5098.74	4071.74	-3.37	-5.87	-19.90	5.85	5.80	-54.20	
5104.00	1.010	206.940	5103.73	4076.73	-3.31	-5.95	-19.94	1.00	1.00	3.40	
5109.00	1.120	210.770	5108.73	4081.73	-3.26	-6.03	-19.99	2.62	2.20	76.60	
5114.00	1.130	212.580	5113.73	4086.73	-3.21	-6.12	-20.04	0.74	0.20	36.20	
5119.00	0.970	206.380	5118.73	4091.73	-3.16	-6.19	-20.08	3.92	-3.20	-124.00	
5124.00	0.870	212.630	5123.73	4096.73	-3.11	-6.26	-20.12	2.83	-2.00	125.00	
5129.00	0.980	217.280	5128.73	4101.73	-3.07	-6.33	-20.17	2.66	2.20	93.00	
5134.00	0.910	222.180	5133.73	4106.73	-3.04	-6.39	-20.22	2.14	-1.40	98.00	
5140.00	1.200	226.160	5139.73	4112.73	-3.00	-6.47	-20.30	4.98	4.83	66.33	Gyro Tie In=5140' MD
5151.00	1.600	291.320	5150.73	4123.73	-3.08	-6.50	-20.52	14.04	3.64	592.36	KOP 1=5151' MD
5168.00	3.620	267.690	5167.71	4140.71	-3.46	-6.43	-21.28	13.22	11.88	-139.00	
5199.00	7.400	283.160	5198.56	4171.56	-4.50	-6.71	-24.24	12.26	12.19	-14.61	
5231.00	10.950	260.210	5230.15	4203.15	-6.01	-7.47	-29.28	11.19	11.09	-9.22	
5267.00	13.440	261.260	5265.33	4238.33	-8.18	-8.69	-36.79	6.94	6.92	2.92	
5300.00	16.140	268.920	5297.24	4270.24	-11.22	-9.36	-45.17	10.09	8.18	23.21	
5332.00	14.850	282.500	5328.08	4301.08	-15.62	-8.55	-53.62	12.00	-4.03	42.44	
5364.00	13.540	302.700	5359.13	4332.13	-21.36	-5.64	-60.78	15.92	-4.09	63.13	

RECEIVED
Office of Oil and Gas
FEB 14 2018
WV Department of
Environmental Protection



Where energy meets innovation.

Actual Wellpath Report

SHR-60 514461 AWP Proj: 21240'

Page 5 of 16



REFERENCE WELLPATH IDENTIFICATION			
Operator	EQT	Slot	Slot 514461
Area	Tyler County, WV	Well	SHR-60 514461
Field	Tyler	Wellbore	SHR-60 514461 AWB
Facility	SHR-60 Pad		

WELLPATH DATA (371 stations)											
MD [ft]	Inclination [°]	Azimuth [°]	TVD [ft]	TVDSS [ft]	Vert Sect [ft]	North [ft]	East [ft]	DLS [°/100ft]	Build Rate [°/100ft]	Turn Rate [°/100ft]	Comments
5396.00	14.300	322.690	5390.20	4363.20	-28.43	-0.47	-66.33	15.14	2.38	62.47	
5427.00	15.990	339.670	5420.14	4393.14	-36.43	6.58	-70.14	15.25	5.45	54.77	
5459.00	16.800	351.980	5450.85	4423.85	-45.23	15.30	-72.32	11.13	2.53	38.47	
5490.00	17.100	4.810	5480.51	4453.51	-53.42	24.28	-72.56	12.08	0.97	41.39	
5522.00	17.710	12.020	5511.05	4484.05	-61.32	33.73	-71.15	7.00	1.91	22.53	
5554.00	18.890	11.080	5541.43	4514.43	-69.31	43.57	-69.14	3.80	3.69	-2.94	
5586.00	21.370	10.470	5571.47	4544.47	-78.15	54.39	-67.09	7.78	7.75	-1.91	
5617.00	25.140	11.770	5599.95	4572.95	-87.93	66.39	-64.72	12.27	12.16	4.19	
5649.00	29.200	13.460	5628.41	4601.41	-99.37	80.65	-61.51	12.91	12.69	5.28	
5681.00	33.560	15.620	5655.73	4628.73	-112.06	96.76	-57.31	14.07	13.63	6.75	
5713.00	37.690	16.940	5681.73	4654.73	-125.89	114.65	-52.08	13.13	12.91	4.13	
5744.00	41.920	18.830	5705.54	4678.54	-140.23	133.52	-45.97	14.19	13.65	6.10	
5776.00	43.640	20.310	5729.03	4702.03	-155.50	154.00	-38.69	6.23	5.38	4.62	
5840.00	42.850	24.150	5775.66	4748.66	-184.83	194.58	-22.12	4.29	-1.23	6.00	
5903.00	40.280	26.640	5822.79	4795.79	-211.05	232.34	-4.22	4.85	-4.08	3.95	
5935.00	39.820	25.170	5847.29	4820.29	-223.81	250.86	4.78	3.29	-1.44	-4.59	
5966.00	39.670	21.990	5871.13	4844.13	-236.71	269.02	12.71	6.58	-0.48	-10.26	
5998.00	39.430	20.850	5895.80	4868.80	-250.56	287.98	20.15	2.39	-0.75	-3.56	KOP 2=5998' MD
6030.00	38.220	25.530	5920.74	4893.74	-263.73	306.42	28.04	9.92	-3.78	14.62	
6062.00	35.250	32.570	5946.39	4919.39	-274.77	323.14	37.28	16.09	-9.28	22.00	
6093.00	32.730	40.960	5972.11	4945.11	-282.78	337.02	47.60	17.16	-8.13	27.06	
6125.00	31.930	49.180	5999.16	4972.16	-288.39	349.09	59.68	13.95	-2.50	25.69	
6157.00	32.010	56.870	6026.32	4999.32	-291.68	359.26	73.19	12.72	0.25	24.03	
6188.00	31.520	62.780	6052.68	5025.68	-292.93	367.46	87.28	10.16	-1.58	19.06	
6220.00	30.240	66.990	6080.15	5053.15	-292.75	374.44	102.14	7.85	-4.00	13.16	
6252.00	30.370	70.960	6107.78	5080.78	-291.41	380.23	117.20	6.27	0.41	12.41	
6283.00	32.160	71.240	6134.27	5107.27	-289.48	385.44	132.42	5.79	5.77	0.90	
6315.00	33.270	71.230	6161.20	5134.20	-287.37	391.00	148.80	3.47	3.47	-0.03	
6347.00	32.620	76.470	6188.06	5161.06	-284.47	395.85	165.50	9.13	-2.03	16.38	
6378.00	32.340	83.050	6214.22	5187.22	-280.02	398.80	181.86	11.43	-0.90	21.23	

RECEIVED
Office of Oil and Gas
FEB 14 2018
WV Department of
Environmental Protection



Where energy meets innovation.

Actual Wellpath Report

SHR-60 514461 AWP Proj: 21240'

Page 6 of 16



REFERENCE WELLPATH IDENTIFICATION			
Operator	EQT	Slot	Slot 514461
Area	Tyler County, WV	Well	SHR-60 514461
Field	Tyler	Wellbore	SHR-60 514461 AWB
Facility	SHR-60 Pad		

WELLPATH DATA (371 stations)											
MD (ft)	Inclination (°)	Azimuth (°)	TVD (ft)	TVDSS (ft)	Vert Sect (ft)	North (ft)	East (ft)	DLS (%/100ft)	Build Rate (%/100ft)	Turn Rate (%/100ft)	Comments
6410.00	32.840	89.900	6241.19	5214.19	-273.50	399.86	199.04	11.63	1.56	21.41	
6442.00	34.010	96.010	6267.90	5240.90	-265.02	398.93	216.62	11.13	3.66	19.09	
6474.00	35.910	101.620	6294.13	5267.13	-254.60	396.11	234.72	11.66	5.94	17.53	
6506.00	38.620	107.470	6319.61	5292.61	-242.05	391.21	253.44	13.93	8.47	18.28	
6538.00	40.940	112.550	6344.20	5317.20	-227.37	384.19	272.66	12.47	7.25	15.87	
6570.00	42.950	117.140	6368.01	5341.01	-210.84	375.20	292.05	11.46	6.28	14.34	
6601.00	44.740	121.050	6390.37	5363.37	-193.27	364.75	310.80	10.47	5.77	12.61	
6633.00	45.770	124.620	6412.90	5385.90	-173.87	352.42	329.89	8.55	3.22	11.16	
6665.00	46.920	127.580	6434.99	5407.99	-153.46	338.78	348.59	7.60	3.59	9.25	
6696.00	49.240	129.800	6455.70	5428.70	-132.64	324.36	366.58	9.19	7.48	7.16	
6728.00	51.680	131.080	6476.07	5449.07	-110.06	308.35	385.36	8.23	7.63	4.00	
6760.00	54.750	132.120	6495.23	5468.23	-86.41	291.33	404.52	9.94	9.59	3.25	
6791.00	59.110	133.770	6512.15	5485.15	-62.20	273.63	423.52	14.75	14.06	5.32	
6823.00	63.820	135.400	6527.43	5500.43	-35.73	253.90	443.53	15.38	14.72	5.09	
6855.00	67.090	137.730	6540.72	5513.72	-8.00	232.76	463.54	12.18	10.22	7.28	
6886.00	70.200	139.740	6552.01	5525.01	19.82	211.06	482.57	11.71	10.03	6.48	
6918.00	72.630	142.300	6562.21	5535.21	49.35	187.48	501.64	10.73	7.59	8.00	
6982.00	76.300	146.820	6579.36	5552.36	110.11	137.26	537.36	8.90	5.73	7.06	
7014.00	77.780	148.840	6586.53	5559.53	141.10	110.86	553.96	7.70	4.63	6.31	
7046.00	79.130	150.310	6592.94	5565.94	172.35	83.83	569.84	6.17	4.22	4.59	
7077.00	82.560	151.160	6597.87	5570.87	202.89	57.13	584.80	11.39	11.06	2.74	
7109.00	85.380	152.420	6601.23	5574.23	234.68	29.09	599.84	9.64	8.81	3.94	
7141.00	86.640	156.080	6603.46	5576.46	266.60	0.34	613.70	12.07	3.94	11.44	
7172.00	85.810	158.440	6605.50	5578.50	297.49	-28.18	625.66	8.05	-2.68	7.61	
7204.00	88.210	158.640	6607.17	5580.17	329.35	-57.92	637.35	7.53	7.50	0.62	LP=7204' MD / 6607.17' TVD
7236.00	89.970	158.820	6607.68	5580.68	361.24	-87.74	648.96	5.53	5.50	0.56	
7299.00	89.850	159.610	6607.77	5580.77	424.00	-146.64	671.31	1.27	-0.19	1.25	
7362.00	90.030	159.820	6607.84	5580.84	486.72	-205.73	693.15	0.44	0.29	0.33	
7425.00	89.880	159.290	6607.89	5580.89	549.44	-264.76	715.16	0.87	-0.24	-0.84	
7489.00	89.940	158.160	6607.99	5580.99	613.24	-324.40	738.38	1.77	0.09	-1.77	

RECEIVED
Office of Oil and Gas
FEB 14 2018
WV Department of
Environmental Protection



Where energy meets innovation.

Actual Wellpath Report

SHR-60 514461 AWP Proj: 21240'

Page 7 of 16



REFERENCE WELLPATH IDENTIFICATION			
Operator	EQT	Slot	Slot 514461
Area	Tyler County, WV	Well	SHR-60 514461
Field	Tyler	Wellbore	SHR-60 514461 AWB
Facility	SHR-60 Pad		

WELLPATH DATA (371 stations)											
MD (ft)	Inclination (°)	Azimuth (°)	TVD (ft)	TVDSS (ft)	Vert Sect (ft)	North (ft)	East (ft)	DLS (%/100ft)	Build Rate (%/100ft)	Turn Rate (%/100ft)	Comments
7552.00	89.750	156.260	6608.16	5581.16	676.15	-382.48	762.78	3.03	-0.30	-3.02	
7615.00	90.090	152.940	6608.25	5581.25	739.14	-439.38	789.80	5.30	0.54	-5.27	
7678.00	90.060	152.370	6608.17	5581.17	802.12	-495.34	818.74	0.91	-0.05	-0.90	
7742.00	90.220	152.530	6608.01	5581.01	866.09	-552.08	848.34	0.35	0.25	0.25	
7805.00	90.090	153.460	6607.84	5580.84	929.07	-608.21	876.95	1.49	-0.21	1.48	
7869.00	90.000	154.880	6607.79	5580.79	993.07	-665.81	904.83	2.22	-0.14	2.22	
7932.00	90.120	153.580	6607.72	5580.72	1056.07	-722.55	932.22	2.07	0.19	-2.06	
7995.00	89.940	153.520	6607.69	5580.69	1119.07	-778.95	960.28	0.30	-0.29	-0.10	
8058.00	89.970	156.270	6607.74	5580.74	1182.06	-836.00	987.01	4.37	0.05	4.37	
8122.00	90.030	157.460	6607.74	5580.74	1245.99	-894.85	1012.16	1.86	0.09	1.86	
8185.00	90.090	157.460	6607.67	5580.67	1308.89	-953.04	1036.30	0.10	0.10	0.00	
8248.00	90.090	157.880	6607.58	5580.58	1371.77	-1011.31	1060.24	0.67	0.00	0.67	
8311.00	89.970	158.130	6607.54	5580.54	1434.63	-1069.73	1083.84	0.44	-0.19	0.40	
8375.00	89.970	158.560	6607.58	5580.58	1498.47	-1129.21	1107.45	0.67	0.00	0.67	
8438.00	90.060	160.220	6607.56	5580.56	1561.21	-1188.17	1129.63	2.64	0.14	2.63	
8501.00	90.150	162.270	6607.44	5580.44	1623.73	-1247.83	1149.88	3.26	0.14	3.25	
8565.00	90.550	162.020	6607.05	5580.05	1687.12	-1308.74	1169.51	0.74	0.62	-0.39	
8627.00	90.340	160.270	6606.57	5579.57	1748.66	-1367.41	1189.54	2.84	-0.34	-2.82	
8691.00	91.020	159.510	6605.81	5578.81	1812.35	-1427.50	1211.54	1.59	1.06	-1.19	
8754.00	90.280	158.380	6605.10	5578.10	1875.13	-1486.29	1234.18	2.14	-1.17	-1.79	
8817.00	90.280	157.920	6604.79	5577.79	1937.98	-1544.77	1257.62	0.73	0.00	-0.73	
8879.00	90.370	158.100	6604.44	5577.44	1999.84	-1602.26	1280.84	0.32	0.15	0.29	
8943.00	90.030	157.160	6604.21	5577.21	2063.73	-1661.44	1305.20	1.56	-0.53	-1.47	
9006.00	90.090	155.030	6604.15	5577.15	2126.69	-1719.03	1330.72	3.38	0.10	-3.38	
9069.00	90.120	154.000	6604.03	5577.03	2189.69	-1776.90	1357.83	1.64	0.05	-1.63	
9132.00	90.000	153.230	6603.97	5576.97	2252.68	-1832.34	1385.83	1.24	-0.19	-1.22	
9196.00	89.970	152.490	6603.98	5576.98	2316.66	-1889.29	1415.02	1.16	-0.05	-1.16	
9259.00	90.490	153.140	6603.73	5576.73	2379.64	-1945.33	1443.80	1.32	0.83	1.03	
9321.00	90.400	155.610	6603.25	5576.25	2441.64	-2001.22	1470.61	3.99	-0.15	3.98	
9385.00	90.460	156.670	6602.77	5575.77	2505.60	-2059.75	1496.50	1.66	0.09	1.66	

RECEIVED
Office of Oil and Gas
FEB 14 2018
WV Department of
Environmental Protection



Where energy meets innovation.

Actual Wellpath Report

SHR-60 514461 AWP Proj: 21240'

Page 8 of 16



REFERENCE WELLPATH IDENTIFICATION			
Operator	EQT	Slot	Slot 514461
Area	Tyler County, WV	Well	SHR-60 514461
Field	Tyler	Wellbore	SHR-60 514461 AWB
Facility	SHR-60 Pad		

WELLPATH DATA (371 stations)											
MD (ft)	Inclination (°)	Azimuth (°)	TVD (ft)	TVDSS (ft)	Vert Sect (ft)	North (ft)	East (ft)	DLS (°/100ft)	Build Rate (°/100ft)	Turn Rate (°/100ft)	Comments
9448.00	90.520	158.680	6602.23	5575.23	2568.48	-2118.03	1520.43	3.19	0.10	3.19	
9511.00	89.940	159.130	6601.98	5574.98	2631.27	-2176.80	1543.10	1.17	-0.92	0.71	
9575.00	89.940	158.880	6602.04	5575.04	2695.04	-2236.55	1566.03	0.39	0.00	-0.39	
9638.00	89.910	157.190	6602.13	5575.13	2757.90	-2294.98	1589.60	2.68	-0.05	-2.68	
9701.00	90.090	155.180	6602.13	5575.13	2820.86	-2352.61	1615.04	3.20	0.29	-3.19	
9764.00	90.280	153.290	6601.92	5574.92	2883.86	-2409.35	1642.42	3.02	0.30	-3.00	
9827.00	90.060	153.690	6601.74	5574.74	2946.85	-2465.72	1670.54	0.72	-0.35	0.63	
9890.00	89.850	153.360	6601.79	5574.79	3009.85	-2522.11	1698.62	0.62	-0.33	-0.52	
9954.00	90.090	150.940	6601.82	5574.82	3073.80	-2578.70	1728.52	3.80	0.38	-3.78	
10016.00	89.380	151.410	6602.11	5575.11	3135.71	-2633.01	1758.41	1.37	-1.15	0.76	
10079.00	89.420	155.000	6602.77	5575.77	3198.69	-2689.24	1786.81	5.70	0.06	5.70	
10143.00	89.450	159.260	6603.40	5576.40	3262.59	-2748.19	1811.67	6.66	0.05	6.66	
10206.00	89.350	159.970	6604.06	5577.06	3325.31	-2807.24	1833.62	1.14	-0.16	1.13	
10269.00	89.350	158.750	6604.77	5577.77	3388.05	-2866.19	1855.82	1.94	0.00	-1.94	
10332.00	89.290	155.830	6605.52	5578.52	3450.95	-2924.30	1880.14	4.64	-0.10	-4.63	
10395.00	89.230	154.480	6606.33	5579.33	3513.93	-2981.46	1906.61	2.14	-0.10	-2.14	
10458.00	89.380	156.210	6607.10	5580.10	3576.91	-3038.71	1932.88	2.76	0.24	2.75	
10520.00	89.290	157.750	6607.82	5580.82	3638.83	-3095.77	1957.13	2.49	-0.15	2.48	
10584.00	89.290	158.990	6608.61	5581.61	3702.66	-3155.25	1980.72	1.94	0.00	1.94	
10647.00	89.290	158.790	6609.39	5582.39	3765.45	-3214.02	2003.40	0.32	0.00	-0.32	
10709.00	89.260	157.900	6610.18	5583.18	3827.28	-3271.64	2026.28	1.44	-0.05	-1.44	
10772.00	90.490	156.590	6610.31	5583.31	3890.19	-3329.74	2050.65	2.85	1.95	-2.08	
10834.00	89.420	155.970	6610.36	5583.36	3952.15	-3386.50	2075.59	1.99	-1.73	-1.00	
10897.00	89.750	155.490	6610.82	5583.82	4015.12	-3443.93	2101.48	0.92	0.52	-0.76	
10960.00	89.540	156.060	6611.21	5584.21	4078.10	-3501.38	2127.33	0.96	-0.33	0.90	
11022.00	89.850	156.490	6611.54	5584.54	4140.06	-3558.14	2152.28	0.85	0.50	0.69	
11086.00	89.540	156.290	6611.88	5584.88	4204.01	-3616.78	2177.91	0.58	-0.48	-0.31	
11148.00	89.820	155.970	6612.23	5585.23	4265.98	-3673.47	2203.00	0.69	0.45	-0.52	
11211.00	89.570	155.630	6612.56	5585.56	4328.95	-3730.94	2228.82	0.67	-0.40	-0.54	
11274.00	89.660	155.380	6612.98	5585.98	4391.93	-3788.27	2254.94	0.42	0.14	-0.40	

RECEIVED
Office of Oil and Gas
FEB 14 2018
WV Department of
Environmental Protection



Where energy meets innovation.

Actual Wellpath Report

SHR-60 514461 AWP Proj: 21240'

Page 9 of 16



REFERENCE WELLPATH IDENTIFICATION			
Operator	EQT	Slot	Slot 514461
Area	Tyler County, WV	Well	SHR-60 514461
Field	Tyler	Wellbore	SHR-60 514461 AWB
Facility	SHR-60 Pad		

WELLPATH DATA (371 stations)											
MD (ft)	Inclination (°)	Azimuth (°)	TVD (ft)	TVDSS (ft)	Vert Sect (ft)	North (ft)	East (ft)	DLS (°/100ft)	Build Rate (°/100ft)	Turn Rate (°/100ft)	Comments
11306.00	89.630	154.920	6613.18	5586.18	4423.93	-3817.30	2268.39	1.44	-0.09	-1.44	
11337.00	89.720	154.700	6613.36	5586.36	4454.93	-3845.35	2281.58	0.77	0.29	-0.71	
11369.00	89.720	154.120	6613.51	5586.51	4486.93	-3874.21	2295.41	1.81	0.00	-1.81	
11400.00	89.630	153.680	6613.69	5586.69	4517.92	-3902.05	2309.04	1.45	-0.29	-1.42	
11463.00	89.630	153.670	6614.10	5587.10	4580.92	-3958.52	2336.98	0.02	0.00	-0.02	
11526.00	89.850	154.130	6614.38	5587.38	4643.92	-4015.09	2364.70	0.81	0.35	0.73	
11590.00	89.600	154.440	6614.69	5587.69	4707.92	-4072.75	2392.47	0.62	-0.39	0.48	
11653.00	89.720	155.000	6615.06	5588.06	4770.91	-4129.72	2419.37	0.91	0.19	0.89	
11717.00	89.570	155.680	6615.46	5588.46	4834.90	-4187.88	2446.07	1.09	-0.23	1.06	
11780.00	89.780	156.340	6615.82	5588.82	4897.87	-4245.44	2471.69	1.10	0.33	1.05	
11844.00	89.690	157.240	6616.11	5589.11	4961.80	-4304.26	2496.91	1.41	-0.14	1.41	
11907.00	89.600	157.420	6616.50	5589.50	5024.71	-4362.39	2521.19	0.32	-0.14	0.29	
11970.00	89.780	157.520	6616.85	5589.85	5087.61	-4420.58	2545.33	0.33	0.29	0.16	
12034.00	89.570	156.860	6617.21	5590.21	5151.52	-4479.57	2570.14	1.08	-0.33	-1.03	
12097.00	89.480	156.410	6617.73	5590.73	5214.46	-4537.40	2595.12	0.73	-0.14	-0.71	
12161.00	89.510	156.300	6618.29	5591.29	5278.41	-4596.03	2620.79	0.18	0.05	-0.17	
12224.00	89.570	156.560	6618.80	5591.80	5341.36	-4653.77	2645.98	0.42	0.10	0.41	
12287.00	89.450	156.450	6619.34	5592.34	5404.31	-4711.55	2671.10	0.26	-0.19	-0.17	
12350.00	89.690	156.990	6619.81	5592.81	5467.25	-4769.41	2695.99	0.94	0.38	0.86	
12413.00	89.600	157.390	6620.20	5593.20	5530.16	-4827.49	2720.42	0.65	-0.14	0.63	
12477.00	89.660	157.700	6620.62	5593.62	5594.06	-4886.63	2744.86	0.49	0.09	0.48	
12540.00	89.690	157.480	6620.97	5593.97	5656.95	-4944.87	2768.88	0.35	0.05	-0.35	
12603.00	89.690	157.820	6621.31	5594.31	5719.83	-5003.14	2792.84	0.54	0.00	0.54	
12666.00	89.850	158.560	6621.57	5594.57	5782.68	-5061.63	2816.24	1.20	0.25	1.17	
12730.00	89.690	159.480	6621.82	5594.82	5846.45	-5121.39	2839.16	1.46	-0.25	1.44	
12793.00	89.570	159.130	6622.23	5595.23	5909.20	-5180.32	2861.42	0.59	-0.19	-0.56	
12856.00	89.780	159.050	6622.59	5595.59	5971.98	-5239.17	2883.90	0.36	0.33	-0.13	
12919.00	89.750	158.200	6622.85	5595.85	6034.79	-5297.84	2906.87	1.35	-0.05	-1.35	
12983.00	89.630	157.630	6623.19	5596.19	6098.65	-5357.14	2930.93	0.91	-0.19	-0.89	
13046.00	89.690	156.800	6623.57	5596.57	6161.57	-5415.22	2955.33	1.32	0.10	-1.32	

RECEIVED
Office of Oil and Gas
FEB 14 2018
WV Department of
Environmental Protection



Where energy meets innovation.

Actual Wellpath Report

SHR-60 514461 AWP Proj: 21240'
Page 10 of 16



REFERENCE WELLPATH IDENTIFICATION			
Operator	EQT	Slot	Slot 514461
Area	Tyler County, WV	Well	SHR-60 514461
Field	Tyler	Wellbore	SHR-60 514461 AWB
Facility	SHR-60 Pad		

WELLPATH DATA (371 stations)												
MD (ft)	Inclination (°)	Azimuth (°)	TVD (ft)	TVDSS (ft)	Vert Sect (ft)	North (ft)	East (ft)	DLS (°/100ft)	Build Rate (°/100ft)	Turn Rate (°/100ft)	Comments	
13110.00	90.250	155.820	6623.60	5596.60	6225.52	-5473.83	2981.04	1.76	0.88	-1.53		
13173.00	89.600	155.490	6623.68	5596.68	6288.50	-5531.22	3007.01	1.16	-1.03	-0.52		
13236.00	89.480	155.580	6624.19	5597.19	6351.48	-5588.57	3033.10	0.24	-0.19	0.14		
13299.00	89.630	155.770	6624.68	5597.68	6414.46	-5645.97	3059.05	0.38	0.24	0.30		
13363.00	89.570	155.420	6625.12	5598.12	6478.44	-5704.25	3085.49	0.55	-0.09	-0.55		
13426.00	89.690	155.570	6625.53	5598.53	6541.42	-5761.57	3111.62	0.30	0.19	0.24		
13490.00	89.510	155.490	6625.98	5598.98	6605.41	-5819.82	3138.13	0.31	-0.28	-0.12		
13552.00	89.450	156.430	6626.54	5599.54	6667.37	-5876.44	3163.39	1.52	-0.10	1.52		
13616.00	89.570	156.730	6627.09	5600.09	6731.32	-5935.17	3188.82	0.50	0.19	0.47		
13679.00	89.570	157.190	6627.56	5600.56	6794.24	-5993.14	3213.48	0.73	0.00	0.73		
13742.00	89.570	157.690	6628.03	5601.03	6857.14	-6051.32	3237.65	0.79	0.00	0.79		
13806.00	89.750	156.820	6628.41	5601.41	6921.05	-6110.34	3262.39	1.39	0.28	-1.36		
13869.00	90.060	156.070	6628.52	5601.52	6984.00	-6168.09	3287.57	1.29	0.49	-1.19		
13932.00	89.750	155.000	6628.62	5601.62	7046.99	-6225.43	3313.66	1.77	-0.49	-1.70		
13996.00	89.690	154.150	6628.93	5601.93	7110.98	-6283.23	3341.14	1.33	-0.09	-1.33		
14059.00	89.850	153.890	6629.19	5602.19	7173.98	-6339.87	3368.73	0.48	0.25	-0.41		
14122.00	89.720	153.790	6629.42	5602.42	7236.98	-6396.41	3396.51	0.26	-0.21	-0.16		
14186.00	89.720	154.100	6629.74	5602.74	7300.98	-6453.91	3424.62	0.48	0.00	0.48		
14249.00	89.850	155.440	6629.97	5602.97	7363.97	-6510.90	3451.47	2.14	0.21	2.13		
14313.00	89.750	157.090	6630.20	5603.20	7427.93	-6569.48	3477.23	2.58	-0.16	2.58		
14377.00	89.940	157.110	6630.37	5603.37	7491.85	-6628.44	3502.14	0.30	0.30	0.03		
14439.00	90.370	157.910	6630.20	5603.20	7553.75	-6685.72	3525.85	1.46	0.69	1.29		
14503.00	90.280	157.600	6629.84	5602.84	7617.62	-6744.96	3550.08	0.50	-0.14	-0.48		
14566.00	90.030	157.370	6629.67	5602.67	7680.52	-6803.15	3574.20	0.54	-0.40	-0.37		
14630.00	90.150	156.820	6629.57	5602.57	7744.44	-6862.11	3599.11	0.88	0.19	-0.86		
14693.00	90.180	156.710	6629.39	5602.39	7807.38	-6920.00	3623.97	0.18	0.05	-0.17		
14756.00	89.780	156.490	6629.41	5602.41	7870.32	-6977.82	3648.99	0.72	-0.63	-0.35		
14818.00	90.150	155.690	6629.45	5602.45	7932.29	-7034.49	3674.11	1.42	0.60	-1.29		
14882.00	89.820	155.350	6629.46	5602.46	7996.27	-7092.74	3700.63	0.74	-0.52	-0.53		
14945.00	89.750	156.240	6629.70	5602.70	8059.25	-7150.20	3726.46	1.42	-0.11	1.41		

RECEIVED
Office of Oil and Gas
FEB 14 2018
WV Department of
Environmental Protection



Where energy meets innovation.

Actual Wellpath Report

SHR-60 514461 AWP Proj: 21240'

Page 11 of 16



REFERENCE WELLPATH IDENTIFICATION			
Operator	EQT	Slot	Slot 514461
Area	Tyler County, WV	Well	SHR-60 514461
Field	Tyler	Wellbore	SHR-60 514461 AWB
Facility	SHR-60 Pad		

WELLPATH DATA (371 stations)											
MD (ft)	Inclination (°)	Azimuth (°)	TVD (ft)	TVDSS (ft)	Vert Sect (ft)	North (ft)	East (ft)	DLS (°/100ft)	Build Rate (°/100ft)	Turn Rate (°/100ft)	Comments
15007.00	89.750	157.220	6629.97	5602.97	8121.19	-7207.16	3750.96	1.58	0.00	1.58	
15071.00	89.780	157.410	6630.23	5603.23	8185.09	-7266.20	3775.64	0.30	0.05	0.30	
15134.00	89.850	158.260	6630.44	5603.44	8247.97	-7324.55	3799.41	1.35	0.11	1.35	
15197.00	89.750	158.080	6630.66	5603.66	8310.82	-7383.03	3822.83	0.33	-0.16	-0.29	
15260.00	89.780	157.150	6630.91	5603.91	8373.70	-7441.28	3846.83	1.48	0.05	-1.48	
15323.00	89.750	156.750	6631.17	5604.17	8436.63	-7499.25	3871.49	0.64	-0.05	-0.63	
15386.00	89.820	156.700	6631.41	5604.41	8499.57	-7557.12	3896.39	0.14	0.11	-0.08	
15449.00	89.820	155.080	6631.61	5604.61	8562.54	-7614.63	3922.12	2.57	0.00	-2.57	
15512.00	90.060	155.110	6631.67	5604.67	8625.54	-7671.77	3948.65	0.38	0.38	0.05	
15576.00	89.970	155.830	6631.66	5604.66	8689.52	-7729.99	3975.22	1.13	-0.14	1.13	
15639.00	90.030	156.060	6631.66	5604.66	8752.49	-7787.52	4000.90	0.38	0.10	0.37	
15702.00	89.820	156.270	6631.74	5604.74	8815.45	-7845.15	4026.36	0.47	-0.33	0.33	
15766.00	89.850	155.630	6631.92	5604.92	8879.43	-7903.59	4052.44	1.00	0.05	-1.00	
15829.00	89.820	155.030	6632.10	5605.10	8942.41	-7960.84	4078.74	0.95	-0.05	-0.95	
15892.00	89.880	154.510	6632.27	5605.27	9005.41	-8017.83	4105.59	0.83	0.10	-0.83	
15955.00	89.910	155.040	6632.39	5605.39	9068.41	-8074.82	4132.44	0.84	0.05	0.84	
16018.00	89.880	156.460	6632.50	5605.50	9131.38	-8132.26	4158.31	2.25	-0.05	2.25	
16081.00	89.910	156.850	6632.62	5605.62	9194.32	-8190.10	4183.28	0.62	0.05	0.62	
16144.00	89.820	156.570	6632.76	5605.76	9257.27	-8247.97	4208.19	0.47	-0.14	-0.44	
16208.00	89.880	156.620	6632.93	5605.93	9321.21	-8306.70	4233.61	0.12	0.09	0.08	
16271.00	89.940	157.160	6633.03	5606.03	9384.14	-8364.65	4258.34	0.86	0.10	0.86	
16335.00	89.850	158.540	6633.15	5606.15	9448.01	-8423.92	4282.47	2.16	-0.14	2.16	
16398.00	89.940	159.260	6633.26	5606.26	9510.80	-8482.70	4305.15	1.15	0.14	1.14	
16462.00	89.880	158.280	6633.36	5606.36	9574.60	-8542.35	4328.32	1.53	-0.09	-1.53	
16525.00	89.910	156.580	6633.48	5606.48	9637.50	-8600.53	4352.50	2.70	0.05	-2.70	
16588.00	89.630	155.820	6633.73	5606.73	9700.46	-8658.17	4377.92	1.29	-0.44	-1.21	
16652.00	89.690	155.510	6634.11	5607.11	9764.44	-8716.48	4404.30	0.49	0.09	-0.48	
16715.00	89.690	155.780	6634.45	5607.45	9827.42	-8773.87	4430.28	0.43	0.00	0.43	
16779.00	89.630	156.630	6634.83	5607.83	9891.38	-8832.43	4456.10	1.33	-0.09	1.33	
16842.00	89.630	156.090	6635.24	5608.24	9954.33	-8890.14	4481.36	0.86	0.00	-0.86	

RECEIVED
Office of Oil and Gas
FEB 14 2018
WV Department of
Environmental Protection



Where energy meets innovation.

Actual Wellpath Report

SHR-60 514461 AWP Proj: 21240'
Page 12 of 16



REFERENCE WELLPATH IDENTIFICATION			
Operator	EQT	Slot	Slot 514461
Area	Tyler County, WV	Well	SHR-60 514461
Field	Tyler	Wellbore	SHR-60 514461 AWB
Facility	SHR-60 Pad		

WELLPATH DATA (371 stations)											
MD (ft)	Inclination (°)	Azimuth (°)	TVD (ft)	TVDSS (ft)	Vert Sect (ft)	North (ft)	East (ft)	DLS (°/100ft)	Build Rate (°/100ft)	Turn Rate (°/100ft)	Comments
16905.00	89.450	155.160	6635.75	5608.75	10017.31	-8947.52	4507.36	1.50	-0.29	-1.48	
16968.00	89.630	155.340	6636.25	5609.25	10080.30	-9004.74	4533.73	0.40	0.29	0.29	
17031.00	89.660	156.220	6636.64	5609.64	10143.27	-9062.19	4559.58	1.40	0.05	1.40	
17094.00	89.720	156.220	6636.98	5609.98	10206.23	-9119.84	4584.98	0.10	0.10	0.00	
17157.00	89.630	154.490	6637.34	5610.34	10269.22	-9177.10	4611.25	2.75	-0.14	-2.75	
17220.00	89.780	154.270	6637.66	5610.66	10332.22	-9233.90	4638.49	0.42	0.24	-0.35	
17283.00	89.850	155.790	6637.87	5610.87	10395.21	-9291.01	4665.08	2.42	0.11	2.41	
17346.00	89.910	155.870	6638.00	5611.00	10458.18	-9348.49	4690.88	0.16	0.10	0.13	
17409.00	89.880	156.340	6638.12	5611.12	10521.15	-9406.09	4716.40	0.75	-0.05	0.75	
17471.00	89.880	156.970	6638.25	5611.25	10583.09	-9463.01	4740.97	1.02	0.00	1.02	
17535.00	89.970	157.760	6638.33	5611.33	10646.99	-9522.08	4765.60	1.24	0.14	1.23	
17598.00	89.690	158.810	6638.52	5611.52	10709.83	-9580.61	4788.91	1.72	-0.44	1.67	
17661.00	89.720	158.850	6638.84	5611.84	10772.63	-9639.36	4811.66	0.08	0.05	0.06	
17725.00	89.820	158.320	6639.10	5612.10	10836.44	-9698.94	4835.03	0.84	0.16	-0.83	
17788.00	89.750	157.330	6639.33	5612.33	10899.32	-9757.28	4858.80	1.58	-0.11	-1.57	
17851.00	89.750	156.460	6639.61	5612.61	10962.25	-9815.22	4883.53	1.38	0.00	-1.38	
17915.00	89.660	156.110	6639.94	5612.94	11026.21	-9873.82	4909.26	0.56	-0.14	-0.55	
17977.00	89.690	154.740	6640.29	5613.29	11088.19	-9930.20	4935.05	2.21	0.05	-2.21	
18040.00	89.750	153.790	6640.60	5613.60	11151.19	-9986.95	4962.40	1.51	0.10	-1.51	
18104.00	89.850	152.600	6640.82	5613.82	11215.18	-10044.07	4991.26	1.87	0.16	-1.86	
18167.00	89.850	153.040	6640.99	5613.99	11278.16	-10100.11	5020.04	0.70	0.00	0.70	
18230.00	89.690	154.340	6641.24	5614.24	11341.15	-10156.59	5047.96	2.08	-0.25	2.06	
18294.00	89.600	156.640	6641.64	5614.64	11405.13	-10214.81	5074.51	3.60	-0.14	3.59	
18357.00	89.660	157.110	6642.04	5615.04	11468.06	-10272.75	5099.25	0.75	0.10	0.75	
18420.00	89.630	156.700	6642.43	5615.43	11530.99	-10330.70	5123.97	0.65	-0.05	-0.65	
18483.00	89.660	156.780	6642.82	5615.82	11593.93	-10388.58	5148.84	0.14	0.05	0.13	
18547.00	89.750	156.400	6643.15	5616.15	11657.87	-10447.31	5174.27	0.61	0.14	-0.59	
18610.00	89.850	157.510	6643.37	5616.37	11720.80	-10505.28	5198.93	1.77	0.16	1.76	
18673.00	89.910	159.570	6643.50	5616.50	11783.62	-10563.91	5221.98	3.27	0.10	3.27	
18737.00	89.660	159.840	6643.74	5616.74	11847.32	-10623.94	5244.18	0.57	-0.39	0.42	

RECEIVED
Office of Oil and Gas
FEB 14 2018
WV Department of
Environmental Protection



Where energy meets innovation.

Actual Wellpath Report

SHR-60 514461 AWP Proj: 21240'

Page 13 of 16



REFERENCE WELLPATH IDENTIFICATION			
Operator	EQT	Slot	Slot 514461
Area	Tyler County, WV	Well	SHR-60 514461
Field	Tyler	Wellbore	SHR-60 514461 AWB
Facility	SHR-60 Pad		

WELLPATH DATA (371 stations)											
MD (ft)	Inclination (°)	Azimuth (°)	TVD (ft)	TVDSS (ft)	Vert Sect (ft)	North (ft)	East (ft)	DLS (%/100ft)	Build Rate (%/100ft)	Turn Rate (%/100ft)	Comments
18800.00	89.880	160.130	6644.00	5617.00	11910.00	-10683.13	5265.74	0.58	0.35	0.46	
18863.00	89.690	160.650	6644.23	5617.23	11972.64	-10742.48	5286.88	0.88	-0.30	0.83	
18925.00	89.600	160.310	6644.62	5617.62	12034.27	-10800.91	5307.60	0.57	-0.15	-0.55	
18988.00	89.910	159.730	6644.89	5617.89	12096.94	-10860.12	5329.13	1.04	0.49	-0.92	
19051.00	89.940	157.990	6644.97	5617.97	12159.74	-10918.88	5351.85	2.76	0.05	-2.76	
19115.00	89.780	156.500	6645.13	5618.13	12223.64	-10977.89	5376.60	2.34	-0.25	-2.33	
19178.00	89.820	155.920	6645.35	5618.35	12286.61	-11035.54	5402.01	0.92	0.06	-0.92	
19241.00	89.750	155.250	6645.58	5618.58	12349.59	-11092.91	5428.05	1.07	-0.11	-1.06	
19303.00	89.690	154.440	6645.89	5618.89	12411.58	-11149.02	5454.41	1.31	-0.10	-1.31	
19367.00	89.780	153.990	6646.18	5619.18	12475.58	-11206.65	5482.25	0.72	0.14	-0.70	
19430.00	89.780	155.110	6646.42	5619.42	12538.58	-11263.54	5509.32	1.78	0.00	1.78	
19493.00	89.750	154.990	6646.68	5619.68	12601.57	-11320.66	5535.89	0.20	-0.05	-0.19	
19555.00	89.820	153.920	6646.91	5619.91	12663.57	-11376.59	5562.83	1.73	0.11	-1.73	
19619.00	89.780	154.420	6647.14	5620.14	12727.57	-11434.20	5590.51	0.78	-0.06	0.78	
19682.00	89.750	155.330	6647.40	5620.40	12790.56	-11491.24	5617.26	1.45	-0.05	1.44	
19745.00	89.780	155.090	6647.65	5620.65	12853.55	-11548.43	5643.68	0.38	0.05	-0.38	
19808.00	89.780	153.860	6647.90	5620.90	12916.55	-11605.28	5670.82	1.95	0.00	-1.95	
19872.00	89.540	154.170	6648.28	5621.28	12980.55	-11662.81	5698.86	0.61	-0.37	0.48	
19935.00	89.780	154.040	6648.65	5621.65	13043.55	-11719.48	5726.38	0.43	0.38	-0.21	
19999.00	89.600	154.300	6649.00	5622.00	13107.55	-11777.09	5754.26	0.49	-0.28	0.41	
20063.00	89.690	155.030	6649.39	5622.39	13171.54	-11834.93	5781.65	1.15	0.14	1.14	
20126.00	89.690	155.350	6649.73	5622.73	13234.53	-11892.12	5808.08	0.51	0.00	0.51	
20189.00	89.600	155.640	6650.12	5623.12	13297.52	-11949.44	5834.21	0.48	-0.14	0.46	
20253.00	89.420	157.040	6650.67	5623.67	13361.47	-12008.06	5859.89	2.21	-0.28	2.19	
20316.00	89.380	156.220	6651.33	5624.33	13424.41	-12065.89	5884.88	1.90	-0.06	-1.30	
20379.00	89.320	155.260	6652.05	5625.05	13487.38	-12123.32	5910.77	1.53	-0.10	-1.52	
20443.00	89.380	156.200	6652.77	5625.77	13551.36	-12181.66	5937.07	1.47	0.09	1.47	
20506.00	89.380	156.700	6653.45	5626.45	13614.30	-12239.41	5962.24	0.79	0.00	0.79	
20569.00	89.320	157.670	6654.17	5627.17	13677.22	-12297.47	5986.67	1.54	-0.10	1.54	
20632.00	89.230	157.900	6654.97	5627.97	13740.09	-12355.79	6010.48	0.39	-0.14	0.37	

RECEIVED
Office of Oil and Gas
FEB 14 2018
WV Department of
Environmental Protection



Where energy meets innovation.

Actual Wellpath Report

SHR-60 514461 AWP Proj: 21240'

Page 14 of 16



REFERENCE WELLPATH IDENTIFICATION			
Operator	EQT	Slot	Slot 514461
Area	Tyler County, WV	Well	SHR-60 514461
Field	Tyler	Wellbore	SHR-60 514461 AWB
Facility	SHR-60 Pad		

WELLPATH DATA (371 stations)											
MD [ft]	Inclination [°]	Azimuth [°]	TVD [ft]	TVDSS [ft]	Vert Sect [ft]	North [ft]	East [ft]	DLS [°/100ft]	Build Rate [°/100ft]	Turn Rate [°/100ft]	Comments
20695.00	89.320	159.240	6655.76	5628.76	13802.90	-12414.43	6033.50	2.13	0.14	2.13	
20758.00	89.230	159.750	6656.56	5629.56	13865.63	-12473.43	6055.57	0.82	-0.14	0.81	
20822.00	89.380	159.020	6657.34	5630.34	13929.36	-12533.33	6078.10	1.16	0.23	-1.14	
20885.00	89.350	159.040	6658.03	5631.03	13992.14	-12592.15	6100.64	0.06	-0.05	0.03	
20949.00	89.140	158.150	6658.88	5631.88	14055.94	-12651.73	6124.00	1.43	-0.33	-1.39	
21012.00	89.320	157.500	6659.72	5632.72	14118.81	-12710.07	6147.77	1.07	0.29	-1.03	
21074.00	89.350	156.710	6660.44	5633.44	14180.73	-12767.18	6171.89	1.28	0.05	-1.27	
21138.00	89.230	156.270	6661.24	5634.24	14244.68	-12825.86	6197.42	0.71	-0.19	-0.69	
21201.00	89.480	155.200	6661.95	5634.95	14307.65	-12883.29	6223.31	1.74	0.40	-1.70	
21215.00	89.230	155.100	6662.10	5635.10	14321.65	-12896.00	6229.19	1.92	-1.79	-0.71	Final Survey=21215' MD / 6662.10' TVD
21240.00	89.230	155.100	6662.44	5635.44	14346.64	-12918.67	6239.72	0.00	0.00	0.00	Projection to TD=21240' MD / 6662.44' TVD, Deepest Point of Well=21240' MD / 6662.44' TVD

HOLE & CASING SECTIONS - Ref Wellbore: SHR-60 514461 AWB Ref Wellpath: SHR-60 514461 AWP Proj: 21240'									
String/Diameter	Start MD [ft]	End MD [ft]	Interval [ft]	Start TVD [ft]	End TVD [ft]	Start N/S [ft]	Start E/W [ft]	End N/S [ft]	End E/W [ft]
26in Conductor	16.00	63.00	47.00	16.00	63.00	0.00	0.00	-0.03	0.05
17.5in Open Hole	63.00	1006.00	943.00	63.00	1006.00	-0.03	0.05	-0.40	1.14
13.375in Casing Surface	16.00	1006.00	990.00	16.00	1006.00	0.00	0.00	-0.40	1.14
12.25in Open Hole	1006.00	2800.00	1794.00	1006.00	2799.92	-0.40	1.14	12.33	-4.27
9.625in Casing Intermediate	16.00	2800.00	2784.00	16.00	2799.92	0.00	0.00	12.33	-4.27
8.75in Open Hole	2800.00	5115.00	2315.00	2799.92	5114.73	12.33	-4.27	-6.13	-20.05
8.5in Open Hole	5115.00	21240.00	16125.00	5114.73	6662.44	-6.13	-20.05	-12918.67	6239.72
5.5in Casing Production	16.00	21240.00	21224.00	16.00	6662.44	0.00	0.00	-12918.67	6239.72

RECEIVED
Office of Oil and Gas
FEB 14 2018
WV Department of
Environmental Protection



Where energy meets innovation.

Actual Wellpath Report

SHR-60 514461 AWP Proj: 21240'

Page 15 of 16



REFERENCE WELLPATH IDENTIFICATION			
Operator	EQT	Slot	Slot 514461
Area	Tyler County, WV	Well	SHR-60 514461
Field	Tyler	Wellbore	SHR-60 514461 AWB
Facility	SHR-60 Pad		

TARGETS								
Name	TVD [ft]	North [ft]	East [ft]	Grid East [US ft]	Grid North [US ft]	Latitude	Longitude	Shape
SHR-60 514461 LP Rev-3	6602.92	-9.24	610.17	1630048.87	328557.97	39°23'40.867"N	80°48'32.687"W	point
SHR-60 514461 BHL Rev-3	6635.02	-12919.33	6239.76	1635678.16	315648.57	39°21'34.087"N	80°47'18.629"W	point
SHR-60 HL1 Rev-1	7000.00	15.00	-0.11	1629438.62	328582.21	39°23'41.019"N	80°48'40.465"W	polygon
SHR-60 HL2 Rev-1	7000.00	15.00	-0.11	1629438.62	328582.21	39°23'41.019"N	80°48'40.465"W	polygon
SHR-60 HL3 Rev-1	7000.00	15.00	-0.11	1629438.62	328582.21	39°23'41.019"N	80°48'40.465"W	polygon

WELLPATH COMPOSITION - Ref Wellbore: SHR-60 514461 AWB					Ref Wellpath: SHR-60 514461 AWP Proj: 21240'	
Start MD [ft]	End MD [ft]	Positional Uncertainty Model	Log Name/Comment	Wellbore		
16.00	5001.00	Gyrodata standard - Drop gyro or Multi-shot	02 Gyrodata MS Gyro <8-3/4"> (100'-5001')	SHR-60 514461 AWB		
5001.00	5140.00	Gyrodata standard - Drop gyro or Multi-shot	03 Gyrodata MS Gyro <8-1/2"> (5001')(5004'-5140')	SHR-60 514461 AWB		
5140.00	5231.00	BHI NaviTrak (Axial)	04 BH MWD <8-1/2"> (5140')(5151'-5231')	SHR-60 514461 AWB		
5231.00	21215.00	BHI AutoTrak Curve (Short)	05 BH AT Curve <8-1/2"> (5231')(5267'-21215')	SHR-60 514461 AWB		
21215.00	21240.00	Blind Drilling (std)	Projection to bit	SHR-60 514461 AWB		

RECEIVED
Office of Oil and Gas
FEB 14 2018
WV Department of
Environmental Protection



Where energy meets innovation.

Actual Wellpath Report

SHR-60 514461 AWP Proj: 21240'

Page 16 of 16



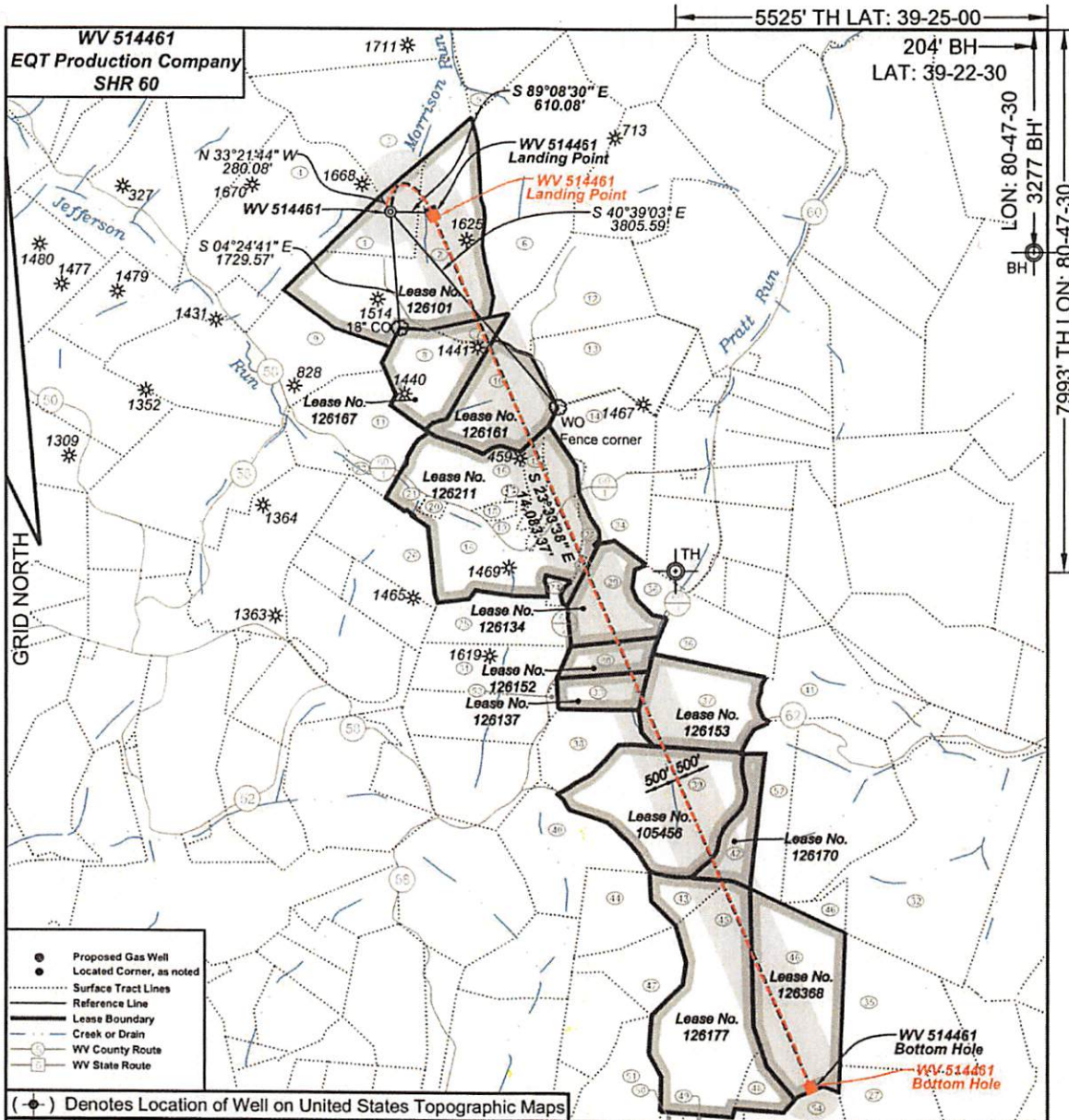
REFERENCE WELLPATH IDENTIFICATION			
Operator	EQT	Slot	Slot 514461
Area	Tyler County, WV	Well	SHR-60 514461
Field	Tyler	Wellbore	SHR-60 514461 AWB
Facility	SHR-60 Pad		

WELLPATH COMMENTS				
MD [ft]	Inclination [°]	Azimuth [°]	TVD [ft]	Comment
5140.00	1.200	226.160	5139.73	Gyro Tie In=5140' MD
5151.00	1.600	291.320	5150.73	KOP 1=5151' MD
5998.00	39.430	20.850	5895.80	KOP 2=5998' MD
7204.00	88.210	158.640	6607.17	LP=7204' MD / 6607.17' TVD
21215.00	89.230	155.100	6662.10	Final Survey=21215' MD / 6662.10' TVD
21240.00	89.230	155.100	6662.44	Projection to TD=21240' MD / 6662.44' TVD, Deepest Point of Well=21240' MD / 6662.44' TVD

RECEIVED
Office of Oil and Gas

FEB 14 2018

WV Department of
Environmental Protection



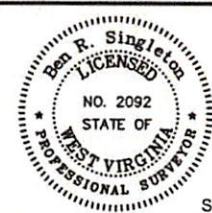
- Proposed Gas Well
- Located Corner, as noted
- Surface Tract Lines
- Reference Line
- Lease Boundary
- Creek or Drain
- WV County Routes
- WV State Route

(●) Denotes Location of Well on United States Topographic Maps



I, the undersigned, hereby certify that this plat is correct to the best of my knowledge and belief and shows all the information required by law and the regulations issued and prescribed by the Department of Environmental Protection,

Ben R. Singleton
P.S. 2092



SEAL

FILE NO: 208-13
DRAWING NO: 208-13 SHR 60 H2
SCALE: 1" = 2000'
MINIMUM DEGREE OF ACCURACY: 1:2500
PROVEN SOURCE OF ELEVATION: NGS CORS Station

STATE OF WEST VIRGINIA
DEPARTMENT OF ENVIRONMENTAL PROTECTION
OIL AND GAS DIVISION

DATE: October 31 20 17
OPERATOR'S WELL NO.: WV 514461
API WELL NO
47 - 95 - 02264
STATE COUNTY PERMIT

WELL TYPE: OIL GAS LIQUID INJECTION WASTE DISPOSAL
(IF GAS) PRODUCTION: STORAGE DEEP SHALLOW
LOCATION: ELEVATION: As-Built 1,011' WATERSHED: Morrison Run of McElroy Creek QUADRANGLE: Shirley
DISTRICT: McElroy COUNTY: Tyler
SURFACE OWNER: Vivian J. Wells, et al. ACREAGE: 35.38
ROYALTY OWNER: George Birklein, et al. LEASE NO: 126101 ACREAGE: 240
PROPOSED WORK: DRILL CONVERT DRILL DEEPER FRACTURE OR STIMULATE PLUG OFF OLD FORMATION
 PERFORATE NEW FORMATION OTHER PHYSICAL CHANGE IN WELL (SPECIFY)
 PLUG AND ABANDON CLEAN OUT AND REPLUG TARGET FORMATION: Marcellus ESTIMATED DEPTH: 6596

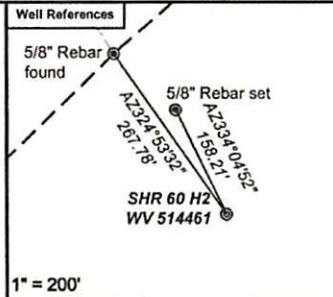
WELL OPERATOR: EQT Production Company DESIGNATED AGENT: Rex C. Ray
ADDRESS: 115 Professional Place PO Box 280 ADDRESS: 115 Professional Place PO Box 280
Bridgeport, WV 26330 Bridgeport, WV 26330

RECEIVED
Office of Oil and Gas
FEB 14 2018
WV Department of Environmental Protection

WV 514461
EQT Production Company
SHR 60

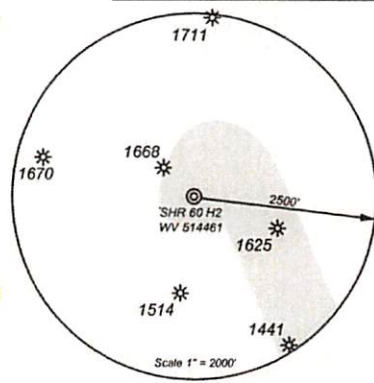
Tract I.D.	Tax Map No.	Parcel No.	County	District	Surface Tract Owner	Acres
1	18	12	Tyler	McElroy	Hanna A. Underwood Estate	35.00
2	18	13	Tyler	McElroy	Blaine Underwood Estate, et al.	104.73
3	18	9	Tyler	McElroy	Lawrence Rayburn, et al.	100.00
4	18	7.1	Tyler	McElroy	Patricia A. Keys, et al.	102.31
5	18	10	Tyler	McElroy	Susan Spencer	2.92
6	18	11	Tyler	McElroy	Susan Spencer	132.00
7	18	15	Tyler	McElroy	Susan Spencer	8.00
8	18	16	Tyler	McElroy	Donald E. Bible Sr.	35.50
9	18	23	Tyler	McElroy	Clyde Seckman Estate	111.75
10	18	17	Tyler	McElroy	Allen Dale Fornash, et al.	41.00
11	18	22	Tyler	McElroy	Donald E. Bible Sr.	39.26
12	18	14	Tyler	McElroy	Terry J. Cumberledge, et al.	54.81
13	18	18	Tyler	McElroy	Terry J. Cumberledge, et al.	49.87
14	18	19	Tyler	McElroy	John Paul Davis	35.00
15	18	20.2	Tyler	McElroy	Richard E. Hansen	19.96
16	18	20	Tyler	McElroy	Clarence G. Dillon, et al.	113.42
17	18	20.6	Tyler	McElroy	Clarence G. Dillon Jr.	0.71
18	18	20.5	Tyler	McElroy	Clarence G. Dillon Jr.	2.94
19	18	20	Tyler	McElroy	Clarence G. Dillon, et al.	113.42
20	18	20.4	Tyler	McElroy	John A. Dillow	2.04
21	18	20.3	Tyler	McElroy	Peter H. Mueller	4.69
22	18	20.1	Tyler	McElroy	William R. Doll Jr., et al.	3.06
23	21	44	Tyler	McElroy	William R. Doll Jr., et al.	2.43
24	21	45	Tyler	McElroy	Clarence G. Dillon, et al.	2.43
25	21	15	Tyler	McElroy	Paul Weekley	36.00
26	21	14	Tyler	McElroy	Donalde N. & Kim M. Wilmoth	73.39
27	2	30	Doddridge	West Union	Susan Walker, et al.	88.65
28	18	21	Tyler	McElroy	Barbara Willer	5.90
29	22	20	Tyler	McElroy	James B. Scott	30.00
30	21	18	Tyler	McElroy	Richard E. & Barbara A. Mullins	20.00
31	21	16	Tyler	McElroy	Paul Weekley	36.00
32	22	13	Tyler	McElroy	Warren C. Putman	147.77
33	21	19	Tyler	McElroy	Richard E. & Barbara A. Mullins	20.00
34	19	80	Tyler	McElroy	John Paul Davis	25.00
35	2	2	Doddridge	West Union	Jason J. Boggs	66.87
36	21	21	Tyler	McElroy	James B. Scott	30.00
37	22	19	Tyler	McElroy	Berdina Rosa, et al.	55.00
38	21	21	Tyler	McElroy	James B. Scott	30.00
39	22	18	Tyler	McElroy	Bruce W. Boland	86.75
40	21	33	Tyler	McElroy	Bruce W. Boland	52.46
41	22	3	Tyler	McElroy	Jacqueline Wickman, et al.	71.62
42	22	18.1	Tyler	McElroy	Bruce W. Boland	18.51
43	22	17	Tyler	McElroy	David R. & Elizabeth A. Beveridge	12.00
44	22	16	Tyler	McElroy	Leah Weekley	29.00
45	2	18	Doddridge	West Union	David R. & Elizabeth A. Beveridge	125.00
46	2	1	Doddridge	West Union	James M. Petrovich, et al.	70.00
47	22	15	Tyler	McElroy	Isaiah Weekley	25.00
48	2	5.4	Doddridge	West Union	David R. & Elizabeth A. Beveridge	11.90
49	2	5.2	Doddridge	West Union	David R. & Elizabeth A. Beveridge	20.88
50	2	4.1	Doddridge	West Union	Robert B. & Marry E. Simpson	20.00
51	2	4	Doddridge	West Union	Robert B. & Marry E. Simpson	38.50
52	22	14	Tyler	McElroy	Paul Dean Steinman Jr. & Marc J. Steinman	126.00
53	22	20	Tyler	McElroy	James B. Scott	30.00
54	2	9	Doddridge	West Union	Charles C. Hittel II	115.75

- SHR 60**
- H1, 514460
 - H2, 514461
 - H3, 514462
 - H4, 514463
 - H5, 514464
 - H6, 514465
 - H7, 514466
 - H8, 515434
 - H9, 515435
 - H10, 515436
 - H11, 515437
 - H12, 515438



As-Drilled Well Information:
 WV 514461 coordinates are:
 NAD 27 N: 328,567.11 E: 1,629,438.89
 NAD 83 UTM N: 4,360,602.83 E: 516,268.86
 WV 514461 Landing Point coordinates are:
 NAD 27 N: 328,509.29 E: 1,630,076.05
 NAD 83 UTM N: 4,360,588.45 E: 516,463.26
 WV 514461 Bottom Hole coordinates are:
 NAD 27 N: 315,649.23 E: 1,635,678.12
 NAD 83 UTM N: 4,356,699.12 E: 518,235.32

West Virginia Coordinate system of 1927 (North Zone) based upon Differential GPS Measurements. Plat orientation, corner and well ties are based upon the grid north meridian. Well location references are based upon the grid north meridian. UTM coordinates are NAD83, Zone 17, Meters.



Lease No.	Acres	Owner
126167	43	Berdina Rose, et al.
126161	43	John A. Dillon, et al.
126211	145	John A. Dillon, et al.
126134	30	Dorothy H. Bode
126137	20	S. A. Smith, et al.
126152	20	Linda Sue Lamb, et al.
126153	55	Jeffrey T. Hefflin, et al.
105456	96	Kimberly Wilcox
126170	15	Mary Ann Ketelson
126177	138	Regina M. Buck, et al.
126368	75	Robin A. Smith, et al.

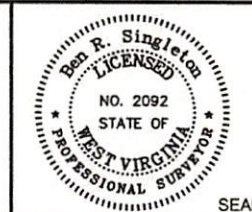
- Proposed Gas Well
- Located Corner, as noted
- Surface Tract Lines
- Reference Line
- Lease Boundary
- Creek or Drain
- WV County Route
- WV State Route



I, the undersigned, hereby certify that this plat is correct to the best of my knowledge and belief and shows all the information required by law and the regulations issued and prescribed by the Department of Environmental Protection.

Ben R. Singleton

P.S. 2092



FILE NO: 208-13
 DRAWING NO: 208-13 SHR 60 H2
 SCALE: 1" = 2000'
 MINIMUM DEGREE OF ACCURACY: 1:2500
 PROVEN SOURCE OF ELEVATION: NGS CORS Station

STATE OF WEST VIRGINIA
 DEPARTMENT OF ENVIRONMENTAL PROTECTION
 OIL AND GAS DIVISION

DATE: October 31 20 17
 OPERATOR'S WELL NO.: WV 514461
 API WELL NO
 47 - 95 - 02264
 STATE COUNTY PERMIT

WELL TYPE: OIL GAS LIQUID INJECTION WASTE DISPOSAL
 (IF GAS) PRODUCTION: STORAGE DEEP SHALLOW

LOCATION: ELEVATION: As-Built 1,011' WATERSHED Morrison Run of McElroy Creek QUADRANGLE: Shirley

DISTRICT: McElroy COUNTY: Tyler

SURFACE OWNER: Vivian J. Wells, et al. ACREAGE: 35.38

ROYALTY OWNER: George Birklein, et al. LEASE NO: 126101 ACREAGE: 240

PROPOSED WORK: DRILL CONVERT DRILL DEEPER FRACTURE OR STIMULATE PLUG OFF OLD FORMATION
 PERFORATE NEW FORMATION OTHER PHYSICAL CHANGE IN WELL (SPECIFY) _____
 PLUG AND ABANDON CLEAN OUT AND REPLUG TARGET FORMATION: Marcellus ESTIMATED DEPTH: 6596

WELL OPERATOR: EQT Production Company DESIGNATED AGENT: Rex C. Ray
 ADDRESS: 115 Professional Place PO Box 280 ADDRESS: 115 Professional Place PO Box 280
 Bridgeport, WV 26330 Bridgeport, WV 26330

RECEIVED
 Office of Oil and Gas
 FEB 14 2018
 WV Department of
 Environmental Protection

514461 47-095-02264-0000 - Perforations

Stage Number	Perforation Date	Top Perf Depth (ftKB)	Bottom Perf Depth (ftKB)	Number of Shots	Formation
Initiation Sleeve	10/22/2017	21,179	21,228	10	MARCELLUS
1	10/28/2017	21,058	21140	24	MARCELLUS
2	10/29/2017	20,898	21020	32	MARCELLUS
3	10/29/2017	20,738	20860	32	MARCELLUS
4	10/29/2017	20,578	20700	32	MARCELLUS
5	10/30/2017	20,418	20540	32	MARCELLUS
6	10/30/2017	20,258	20380	32	MARCELLUS
7	10/30/2017	20,098	20220	32	MARCELLUS
8	10/31/2017	19,938	20060	32	MARCELLUS
9	10/31/2017	19,778	19900	32	MARCELLUS
10	10/31/2017	19,618	19740	32	MARCELLUS
11	10/31/2017	19,458	19580	32	MARCELLUS
12	11/1/2017	19,298	19420	32	MARCELLUS
13	11/2/2017	19,138	19260	32	MARCELLUS
14	11/2/2017	18,978	19100	32	MARCELLUS
15	11/2/2017	18,818	18940	32	MARCELLUS
16	11/3/2017	18,658	18780	32	MARCELLUS
17	11/3/2017	18,498	18620	32	MARCELLUS
18	11/3/2017	18,338	18460	32	MARCELLUS
19	11/4/2017	18,178	18300	32	MARCELLUS
20	11/4/2017	18,018	18140	32	MARCELLUS
21	11/5/2017	17,858	17980	32	MARCELLUS
22	11/5/2017	17,698	17820	32	MARCELLUS
23	11/5/2017	17,538	17660	32	MARCELLUS
24	11/5/2017	17,378	17500	40	MARCELLUS
25	11/6/2017	17,218	17340	40	MARCELLUS
26	11/6/2017	17,058	17180	40	MARCELLUS
27	11/7/2017	16,898	17020	40	MARCELLUS
28	11/7/2017	16,738	16860	40	MARCELLUS
29	11/7/2017	16,578	16700	40	MARCELLUS
30	11/7/2017	16,418	16540	40	MARCELLUS
31	11/7/2017	16,258	16380	40	MARCELLUS
32	11/8/2017	16,098	16220	40	MARCELLUS
33	11/8/2017	15,938	16060	40	MARCELLUS
34	11/9/2017	15,778	15900	40	MARCELLUS
35	11/9/2017	15,618	15740	40	MARCELLUS
36	11/9/2017	15,458	15580	40	MARCELLUS
37	11/10/2017	15,298	15420	40	MARCELLUS
38	11/10/2017	15,138	15260	40	MARCELLUS
39	11/10/2017	14,978	15100	40	MARCELLUS
40	11/11/2017	14,818	14940	40	MARCELLUS
41	11/11/2017	14,658	14780	40	MARCELLUS
42	11/11/2017	14,498	14620	40	MARCELLUS
43	11/11/2017	14,338	14460	40	MARCELLUS
44	11/12/2017	14,178	14300	40	MARCELLUS
45	11/12/2017	14,018	14140	40	MARCELLUS
46	11/12/2017	13,858	13980	40	MARCELLUS
47	11/13/2017	13,698	13820	40	MARCELLUS
48	11/13/2017	13,538	13660	40	MARCELLUS
49	11/14/2017	13,378	13500	40	MARCELLUS
50	11/14/2017	13,218	13340	40	MARCELLUS
51	11/14/2017	13,058	13180	40	MARCELLUS
52	11/15/2017	12,898	13020	40	MARCELLUS
53	11/15/2017	12,738	12860	40	MARCELLUS
54	11/15/2017	12,578	12700	40	MARCELLUS
55	11/16/2017	12,418	12540	40	MARCELLUS

RECEIVED
Office of Oil and Gas
FEB 14 2018
WV Department of
Environmental Protection

514461-095-02264-0000 - Stimulated Stages

Stage Number	Stimulation Date	Ave Pump Rate (BPM)	Ave Treatment Pressure (PSI)	Max Breakdown Pressure (PSI)	ISIP (PSI)	Amount of Proppant (lbs)	Amount of Water (bbls)	Amount of Nitrogen/other (units)
1.01	10/28/2017	19	4,877	6,020	3,933	0	6,060	0
1	10/29/2017	73	7,999	8,700	2,804	440,068	10,196	0
2	10/29/2017	80	8,133	8,364	2,983	440,652	8,471	0
3	10/29/2017	80	8,128	8,370	3,011	440,780	8,496	0
4	10/30/2017	80	8,047	8,804	3,195	440,077	8,885	0
5	10/30/2017	80	8,039	8,247	3,072	440,743	8,317	0
6	10/30/2017	80	7,968	8,528	2,947	441,660	8,431	0
7	10/31/2017	81	8,068	8,244	3,216	440,003	8,417	0
8	10/31/2017	80	8,066	8,397	3,074	440,557	8,297	0
9	10/31/2017	80	8,052	8,232	3,206	441,240	8,458	0
10	10/31/2017	80	8,175	8,498	3,630	441,092	8,342	0
11	11/1/2017	80	8,021	8,404	3,562	440,094	8,387	0
12	11/2/2017	80	7,985	8,617	3,654	442,085	8,407	0
13	11/2/2017	80	8,187	8,397	3,912	442,539	8,311	0
14	11/2/2017	80	8,250	8,962	3,380	440,002	8,167	0
15	11/3/2017	80	8,426	8,850	3,364	440,076	8,271	0
16	11/3/2017	80	8,246	8,353	4,211	438,232	8,350	0
17	11/3/2017	80	8,145	8,581	3,889	442,725	8,267	0
18	11/3/2017	80	8,292	9,125	3,490	434,430	7,920	0
19	11/4/2017	74	8,488	9,174	3,971	440,062	11,360	0
20	11/5/2017	80	8,035	8,622	4,043	440,021	8,023	0
21	11/5/2017	80	8,203	8,702	3,988	440,008	8,153	0
22	11/5/2017	80	8,280	8,523	4,097	442,614	7,974	0
23	11/5/2017	79	8,277	8,721	3,904	441,630	8,643	0
24	11/6/2017	90	8,535	8,686	4,320	550,107	9,567	0
25	11/6/2017	90	8,981	9,226	3,766	551,020	9,621	0
26	11/7/2017	92	8,829	9,007	3,702	550,058	9,745	0
27	11/7/2017	94	8,877	9,176	3,917	550,592	9,746	0
28	11/7/2017	97	9,047	9,230	4,387	553,157	10,022	0
29	11/7/2017	96	8,916	9,188	3,540	551,042	9,406	0
30	11/8/2017	99	8,877	9,102	3,753	551,100	9,479	0
31	11/8/2017	98	8,849	9,181	3,965	550,840	9,675	0
32	11/9/2017	96	8,833	9,010	3,542	551,900	10,587	0
33	11/9/2017	94	8,879	9,241	4,534	547,900	10,505	0
34	11/9/2017	97	9,089	9,238	4,643	549,700	9,711	0
35	11/10/2017	100	8,848	9,087	4,507	551,680	9,406	0
36	11/10/2017	99	8,987	9,252	3,560	549,930	9,642	0
37	11/10/2017	99	9,028	9,272	3,759	550,090	9,276	0
38	11/10/2017	97	8,985	9,275	4,191	550,560	9,362	0
39	11/11/2017	98	8,741	9,062	3,838	551,230	9,685	0
40	11/11/2017	100	8,905	9,260	4,664	552,250	9,391	0
41	11/11/2017	101	8,578	8,760	3,881	550,190	9,396	0
42	11/12/2017	99	8,629	8,895	3,816	549,650	9,303	0
43	11/12/2017	99	8,749	9,216	4,587	550,054	9,172	0
44	11/12/2017	100	8,751	9,234	4,457	550,570	9,090	0
45	11/13/2017	99	8,785	9,184	3,719	549,790	8,803	0
46	11/13/2017	100	8,731	9,206	4,401	550,052	9,099	0
47	11/13/2017	100	8,624	9,075	3,415	549,970	9,038	0
48	11/14/2017	100	8,681	8,954	3,764	549,144	9,109	0
49	11/14/2017	100	8,735	9,327	3,661	550,078	9,049	0
50	11/14/2017	98	8,667	9,466	3,515	549,290	9,127	0
51	11/15/2017	100	8,555	9,258	3,998	550,132	9,016	0
52	11/15/2017	99	8,666	9,333	3,671	550,017	8,909	0
53	11/15/2017	101	8,468	8,876	3,385	553,005	9,296	0
54	11/15/2017	101	8,366	8,815	3,318	553,038	8,963	0
55	11/16/2017	101	8,618	9,010	3,826	540,580	9,047	0

RECEIVED
Office of Oil and Gas
FEB 14 2018
WV Department of
Environmental Protection

Hydraulic Fracturing Fluid Product Component Information Disclosure

Job Start Date:	10/27/2017
Job End Date:	11/16/2017
State:	West Virginia
County:	Tyler
API Number:	47-095-02264-00-00
Operator Name:	EQT Production
Well Name and Number:	514461
Latitude:	39.39468600
Longitude:	-80.81123900
Datum:	NAD83
Federal Well:	NO
Indian Well:	NO
True Vertical Depth:	6,587
Total Base Water Volume (gal):	21,161,532
Total Base Non Water Volume:	0



Hydraulic Fracturing Fluid Composition:

Trade Name	Supplier	Purpose	Ingredients	Chemical Abstract Service Number (CAS #)	Maximum Ingredient Concentration in Additive (% by mass)**	Maximum Ingredient Concentration in HF Fluid (% by mass)**	Comments
Water	FTS International	Carrier/Base Fluid					
			Water	7732-18-5	100.00000	86.14744	None
Silv 7500 Pipe On Pipe	Silverback Chemical	Drilling Compound					
			Water	7732-18-5	15.00000	0.00021	None

RECEIVED
 Office of Oil and Gas
 WV Department of
 Environmental Protection
 FEB 14 2018

Other Chemical (s)	Listed Above	See Trade Name (s) List					
			Water	7732-18-5	15.00000	0.00021	
APB-1	FTS International	Gel Breaker					
				Listed Below			
CS-500-SI	FTS International	Scale inhibitor					
				Listed Below			
MC MX 5-3886	Multi-Chem	Specialty Brine					
				Listed Below			
FRW-1450	FTS International	Polymer					
				Listed Below			
Sand (Proppant)	FTS International	Proppant					
				Listed Below			
HVG-1 4.0	FTS International	Water Gelling Agent					
				Listed Below			
Hydrochloric Acid (15%)	FTS International	Acidizing					
				Listed Below			
CI-150	FTS International	Acid corrosion inhibitor					

RECEIVED
 Office of Oil and Gas
 FEB 14 2018
 MN Department of
 Environmental Protection

				Listed Below			
MC MX 8-4543	Multi-Chem	Bacteria Treatment					
				Listed Below			
Items above are Trade Names with the exception of Base Water . Items below are the individual ingredients.							
			Silica Substrate	14808-60-7	100.00000	13.53247	None
			Calcium Nitrate.4H2O	13477-34-4	100.00000	0.05670	None
			Hydrochloric Acid	7647-01-0	15.00000	0.02361	None
			Distillates (Petroleum), Hydrotreated Light	64742-47-8	30.00000	0.02249	None
			Distillates (Petroleum), Hydrotreated Light	64742-47-8	30.00000	0.02249	
			Trade Secret	Proprietary	100.00000	0.00496	
			Trade Secret	Proprietary	100.00000	0.00496	None
			Alcohols, C11-14-iso-, C13-Rich, Ethoxylated	78330-21-9	5.00000	0.00375	
			Alcohols, C11-14-iso-, C13-Rich, Ethoxylated	78330-21-9	5.00000	0.00375	None
			Ethylene Glycol	107-21-1	10.00000	0.00242	None
			Lubricating Oils (Petroleum),C20-50, Hydrotreated Neutral Oil-Based	72623-87-1	45.00000	0.00064	None
			Lubricating Oils (Petroleum),C20-50, Hydrotreated Neutral Oil-Based	72623-87-1	45.00000	0.00064	
			Trade Secret	Proprietary	40.00000	0.00057	None
			Trade Secret	Proprietary	40.00000	0.00057	
			Trade Secret	Proprietary	15.00000	0.00021	None
			Trade Secret	Proprietary	15.00000	0.00021	
			Organic Amine Resin Salt	Proprietary	30.00000	0.00009	None
			Ethylene Glycol	107-21-1	30.00000	0.00009	None
			Isopropanol	67-63-0	30.00000	0.00009	None

RECEIVED
 Office of Oil and Gas
 FEB 14 2018
 MN Department of
 Environmental Protection

			Raffinates, Sorption Process	64741-85-1	55.00000	0.00008	None
			Raffinates, Sorption Process	64741-85-1	55.00000	0.00008	
			Guar Gum	9000-30-0	50.00000	0.00008	
			Guar Gum	9000-30-0	50.00000	0.00008	None
			Trade Secret	Proprietary	5.00000	0.00007	None
			Trade Secret	Proprietary	5.00000	0.00007	
			Ammonium Persulfate	7727-54-0	95.00000	0.00005	
			Ammonium Persulfate	7727-54-0	95.00000	0.00005	None
			Dimethylformamide	68-12-2	10.00000	0.00003	None
			Aromatic Aldehyde	Proprietary	10.00000	0.00003	None
			Quaternary ammonium compound	Proprietary	10.00000	0.00003	None
			Trade Secret	Proprietary	1.00000	0.00001	
			Trade Secret	Proprietary	1.00000	0.00001	None
			Quartz	14808-60-7	4.00000	0.00001	None
			Quartz	14808-60-7	4.00000	0.00001	
			Isotridecanol, Ethoxylated	9043-30-5	2.00000	0.00000	None
			Isotridecanol, Ethoxylated	9043-30-5	2.00000	0.00000	

* Total Water Volume sources may include various types of water including fresh water, produced water, and recycled water

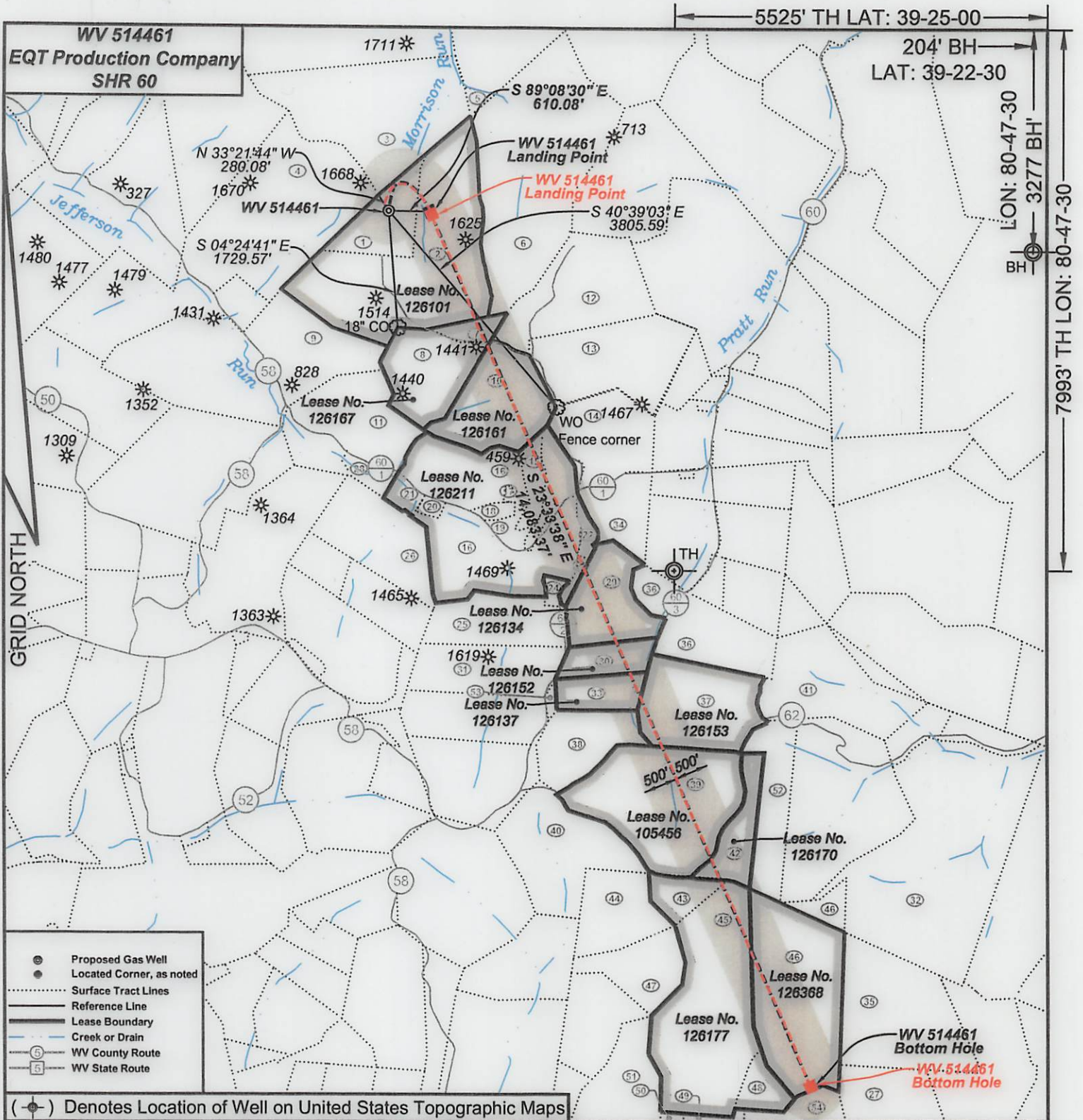
** Information is based on the maximum potential for concentration and thus the total may be over 100%

*** If you are calculating a percentage of total ingredients do not add the water volume below the green line to the water volume above the green line

Note: For Field Development Products (products that begin with FDP), MSDS level only information has been provided.

Ingredient information for chemicals subject to 29 CFR 1910.1200(i) and Appendix D are obtained from suppliers Material Safety Data Sheets (MSDS)

RECEIVED
Office of Oil and Gas
FEB 14 2018
WV Department of
Environmental Protection

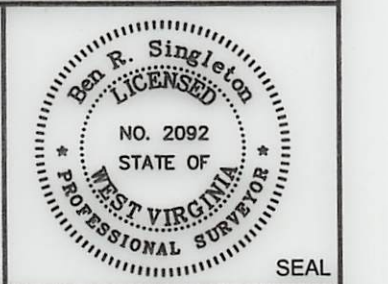


- ⊙ Proposed Gas Well
 - Located Corner, as noted
 - Surface Tract Lines
 - Reference Line
 - Lease Boundary
 - Creek or Drain
 - Ⓢ WV County Route
 - Ⓟ WV State Route
- (⊙) Denotes Location of Well on United States Topographic Maps



I, the undersigned, hereby certify that this plat is correct to the best of my knowledge and belief and shows all the information required by law and the regulations issued and prescribed by the Department of Environmental Protection.

Ben R. Stoltz
P.S. 2092



FILE NO: 208-13
DRAWING NO: 208-13 SHR 60 H2
SCALE: 1" = 2000'
MINIMUM DEGREE OF ACCURACY: 1:2500
PROVEN SOURCE OF ELEVATION: NGS CORS Station

STATE OF WEST VIRGINIA
DEPARTMENT OF ENVIRONMENTAL PROTECTION
OIL AND GAS DIVISION

DATE: October 31 20 17
OPERATOR'S WELL NO.: WV 514461
API WELL NO
47 - 95 - 02264
STATE COUNTY PERMIT

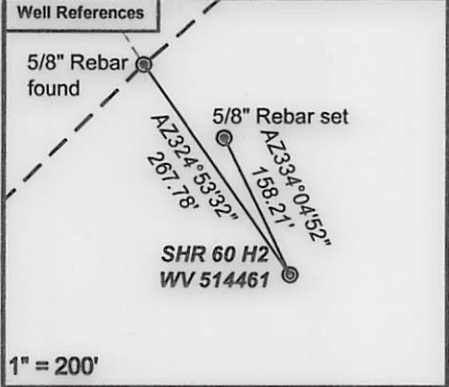
WELL TYPE: OIL GAS LIQUID INJECTION WASTE DISPOSAL
(IF GAS) PRODUCTION: STORAGE DEEP SHALLOW
LOCATION: ELEVATION: As-Built 1,011' WATERSHED Morrison Run of McElroy Creek QUADRANGLE: Shirley
DISTRICT: McElroy COUNTY: Tyler
SURFACE OWNER: Vivian J. Wells, et al. ACREAGE: 35.38
ROYALTY OWNER: George Birklein, et al. LEASE NO: 126101 ACREAGE: 240
PROPOSED WORK: DRILL CONVERT DRILL DEEPER FRACTURE OR STIMULATE PLUG OFF OLD FORMATION
 PERFORATE NEW FORMATION OTHER PHYSICAL CHANGE IN WELL (SPECIFY)
 PLUG AND ABANDON CLEAN OUT AND REPLUG TARGET FORMATION: Marcellus ESTIMATED DEPTH: 6596

WELL OPERATOR: EQT Production Company DESIGNATED AGENT: Rex C. Ray
ADDRESS: 115 Professional Place PO Box 280 ADDRESS: 115 Professional Place PO Box 280
Bridgeport, WV 26330 Bridgeport, WV 26330

WV 514461
EQT Production Company
SHR 60

SHR 60

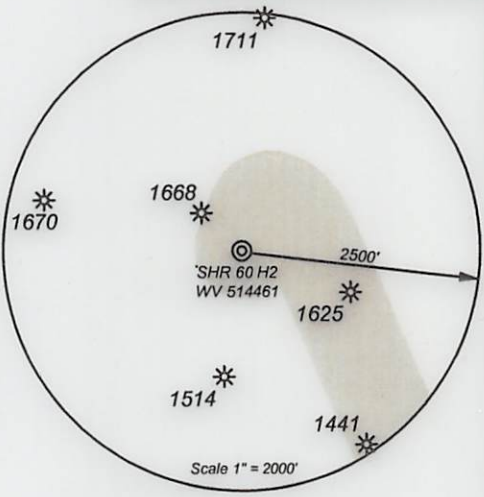
○ H1, 514460
 H2, 514461
 ○ H3, 514462
 H4, 514463
 ○ H5, 514464
 H6, 514465
 ○ H7, 514466
 H8, 515434
 ○ H9, 515435
 H10, 515436
 ○ H11, 515437
 H12, 515438 ○



As-Drilled Well Information:
WV 514461 coordinates are
 NAD 27 N: 328,567.11 E: 1,629,438.89
 NAD 83 UTM N: 4,360,602.83 E: 516,268.86
WV 514461 Landing Point coordinates are
 NAD 27 N: 328,509.29 E: 1,630,076.05
 NAD 83 UTM N: 4,360,588.45 E: 516,463.26
WV 514461 Bottom Hole coordinates are
 NAD 27 N: 315,649.23 E: 1,635,678.12
 NAD 83 UTM N: 4,356,699.12 E: 518,235.32

West Virginia Coordinate system of 1927 (North Zone) based upon Differential GPS Measurements. Plat orientation, corner and well ties are based upon the grid north meridian. Well location references are based upon the grid north meridian. UTM coordinates are NAD83, Zone 17, Meters.

Tract ID.	Tax Map No.	Parcel No.	County	District	Surface Tract Owner	Acres
1	18	12	Tyler	McElroy	Hanna A. Underwood Estate	35.00
2	18	13	Tyler	McElroy	Blaine Underwood Estate, et al.	104.73
3	18	9	Tyler	McElroy	Lawrence Rayburn, et al.	100.00
4	18	7.1	Tyler	McElroy	Patricia A. Keys, et al.	102.31
5	18	10	Tyler	McElroy	Susan Spencer	2.92
6	18	11	Tyler	McElroy	Susan Spencer	132.00
7	18	15	Tyler	McElroy	Susan Spencer	8.00
8	18	16	Tyler	McElroy	Donald E. Bible Sr.	35.50
9	18	23	Tyler	McElroy	Clyde Seckman Estate	111.75
10	18	17	Tyler	McElroy	Allen Dale Fornash, et al.	43.00
11	18	22	Tyler	McElroy	Donald E. Bible Sr.	39.26
12	18	14	Tyler	McElroy	Terry J. Cumberledge, et al.	54.81
13	18	18	Tyler	McElroy	Terry J. Cumberledge, et al.	49.87
14	18	19	Tyler	McElroy	John Paul Davis	35.00
15	18	20.2	Tyler	McElroy	Richard E. Hansen	19.96
16	18	20	Tyler	McElroy	Clarence G. Dillon, et al.	113.42
17	18	20.6	Tyler	McElroy	Clarence G. Dillon Jr.	0.71
18	18	20.5	Tyler	McElroy	Clarence G. Dillon Jr.	2.94
19	18	20	Tyler	McElroy	Clarence G. Dillon, et al.	113.42
20	18	20.4	Tyler	McElroy	John A. Dillon	2.04
21	18	20.3	Tyler	McElroy	Peter H. Mueller	4.69
22	18	20.1	Tyler	McElroy	William R. Doll Jr, et al.	3.06
23	21	44	Tyler	McElroy	William R. Doll Jr, et al.	2.43
24	21	45	Tyler	McElroy	Clarence G. Dillon, et al.	2.43
25	21	15	Tyler	McElroy	Paul Weekley	36.00
26	21	14	Tyler	McElroy	Donnie N. & Kim M. Wilmoth	73.39
27	2	10	Doddridge	West Union	Susan Walker, et al.	88.65
28	18	21	Tyler	McElroy	Barbara Willier	5.90
29	22	20	Tyler	McElroy	James B. Scott	30.00
30	21	18	Tyler	McElroy	Richard E. & Barbara A. Mullins	20.00
31	21	16	Tyler	McElroy	Paul Weekley	36.00
32	22	13	Tyler	McElroy	Warren C. Putman	147.77
33	21	19	Tyler	McElroy	Richard E. & Barbara A. Mullins	20.00
34	19	80	Tyler	McElroy	John Paul Davis	25.00
35	2	2	Doddridge	West Union	Jason J. Boggs	66.87
36	21	21	Tyler	McElroy	James B. Scott	30.00
37	22	19	Tyler	McElroy	Berdina Rose, et al.	55.00
38	21	21	Tyler	McElroy	James B. Scott	30.00
39	22	18	Tyler	McElroy	Bruce W. Boland	86.75
40	21	33	Tyler	McElroy	Bruce W. Boland	52.46
41	22	3	Tyler	McElroy	Jacqueline Wickman, et al.	71.62
42	22	18.1	Tyler	McElroy	Bruce W. Boland	18.91
43	22	17	Tyler	McElroy	David R. & Elizabeth A. Beveridge	12.00
44	22	16	Tyler	McElroy	Leah Weekley	29.00
45	2	18	Doddridge	West Union	David R. & Elizabeth A. Beveridge	125.00
46	2	1	Doddridge	West Union	James M. Petrovich, et al.	70.00
47	22	15	Tyler	McElroy	Isaiah Weekley	25.00
48	2	5.4	Doddridge	West Union	David R. & Elizabeth A. Beveridge	11.90
49	2	5.1	Doddridge	West Union	David R. & Elizabeth A. Beveridge	20.88
50	2	4.1	Doddridge	West Union	Robert B. & Marry E. Simpson	20.00
51	2	4	Doddridge	West Union	Robert B. & Marry E. Simpson	38.50
52	22	14	Tyler	McElroy	Paul Dean Steinman Jr. & Marc J. Steinman	126.00
53	22	20	Tyler	McElroy	James B. Scott	30.00
54	2	9	Doddridge	West Union	Charles C. Hittel III	115.75



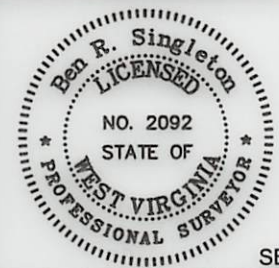
Lease No.	Acres	Owner
126167	43	Berdina Rose, et al.
126161	43	John A. Dillon, et al.
126211	145	John A. Dillon, et al.
126134	30	Dorothy H. Bode
126137	20	S. A. Smith, et al.
126152	20	Linda Sue Lamb, et al.
126153	55	Jeffrey T. Hefflin, et al.
105456	96	Kimberly Wilcox
126170	15	Mary Ann Ketelson
126177	138	Regina M. Buck, et al.
126368	75	Robin A. Smith, et al.

- Proposed Gas Well
- Located Corner, as noted
- Surface Tract Lines
- Reference Line
- Lease Boundary
- Creek or Drain
- ⑤ WV County Route
- ⑤ WV State Route



I, the undersigned, hereby certify that this plat is correct to the best of my knowledge and belief and shows all the information required by law and the regulations issued and prescribed by the Department of Environmental Protection.

Ben R. Singleton
 P.S. 2092



FILE NO: 208-13
 DRAWING NO: 208-13 SHR 60 H2
 SCALE: 1" = 2000'
 MINIMUM DEGREE OF ACCURACY: 1:2500
 PROVEN SOURCE OF ELEVATION: NGS CORS Station

STATE OF WEST VIRGINIA
 DEPARTMENT OF ENVIRONMENTAL PROTECTION
OIL AND GAS DIVISION

DATE: October 31 20 17
 OPERATOR'S WELL NO.: WV 514461
 API WELL NO
 47 - 95 - 02264
 STATE COUNTY PERMIT

WELL TYPE: OIL GAS LIQUID INJECTION WASTE DISPOSAL
 (IF GAS) PRODUCTION: STORAGE DEEP SHALLOW
 LOCATION: ELEVATION: As-Built 1,011' WATERSHED Morrison Run of McElroy Creek QUADRANGLE: Shirley
 DISTRICT: McElroy COUNTY: Tyler
 SURFACE OWNER: Vivian J. Wells, et al. ACREAGE: 35.38
 ROYALTY OWNER: George Birklein, et al. LEASE NO: 126101 ACREAGE: 240
 PROPOSED WORK: DRILL CONVERT DRILL DEEPER FRACTURE OR STIMULATE PLUG OFF OLD FORMATION
 PERFORATE NEW FORMATION OTHER PHYSICAL CHANGE IN WELL (SPECIFY)
 PLUG AND ABANDON CLEAN OUT AND REPLUG TARGET FORMATION: Marcellus ESTIMATED DEPTH: 6596

WELL OPERATOR: EQT Production Company DESIGNATED AGENT: Rex C. Ray
 ADDRESS: 115 Professional Place PO Box 280 ADDRESS: 115 Professional Place PO Box 280
 Bridgeport, WV 26330 Bridgeport, WV 26330