

State of West Virginia  
Department of Environmental Protection - Office of Oil and Gas  
Well Operator's Report of Well Work

*PM Jackie Hand*  
*11-18-15*

API 47-95-2266 County TYLER District ELLSWORTH  
Quad Porter Falls Pad Name \_\_\_\_\_ Field/Pool Name \_\_\_\_\_  
Farm name WALLACE, CLARA & RICKIE Well Number KLEEH 2V SOUTH  
Operator (as registered with the OOG) ALLIANCE PETROLEUM CORPOATION  
Address 4150 BELDEN VILLAGE AVE. NW SUITE 410 City CANTON State OHIO Zip 44718-2553

As Drilled location NAD 83/UTM Attach an as-drilled plat, profile view, and deviation survey  
Top hole Northing \_\_\_\_\_ Easting \_\_\_\_\_  
Landing Point of Curve Northing \_\_\_\_\_ Easting \_\_\_\_\_  
Bottom Hole Northing \_\_\_\_\_ Easting \_\_\_\_\_

Elevation (ft) 1172 GL Type of Well  New  Existing Type of Report  Interim  Final  
Permit Type  Deviated  Horizontal  Horizontal 6A  Vertical Depth Type  Deep  Shallow  
Type of Operation  Convert  Deepen  Drill  Plug Back  Redrilling  Rework  Stimulate  
Well Type  Brine Disposal  CBM  Gas  Oil  Secondary Recovery  Solution Mining  Storage  Other \_\_\_\_\_  
Type of Completion  Single  Multiple Fluids Produced  Brine  Gas  NGL  Oil  Other \_\_\_\_\_  
Drilled with  Cable  Rotary

Drilling Media Surface hole  Air  Mud  Fresh Water Intermediate hole  Air  Mud  Fresh Water  Brine  
Production hole  Air  Mud  Fresh Water  Brine  
Mud Type(s) and Additive(s)  
POTASH- CLAY SLAY- SOAP

Date permit issued 5/28/15 Date drilling commenced 7-14-15 Date drilling ceased 7-21/15  
Date completion activities began 8/25/15 Date completion activities ceased 8/29/15  
Verbal plugging (Y/N) \_\_\_\_\_ Date permission granted \_\_\_\_\_ Granted by \_\_\_\_\_

Please note: Operator is required to submit a plugging application within 5 days of verbal permission to plug

Freshwater depth(s) ft 48' - 300' Open mine(s) (Y/N) depths N/A  
Salt water depth(s) ft 1632' - 2370' Void(s) encountered (Y/N) depths NOV 0 9 2015  
Coal depth(s) ft 960' - 965' Cavern(s) encountered (Y/N) depths N  
Is coal being mined in area (Y/N) N

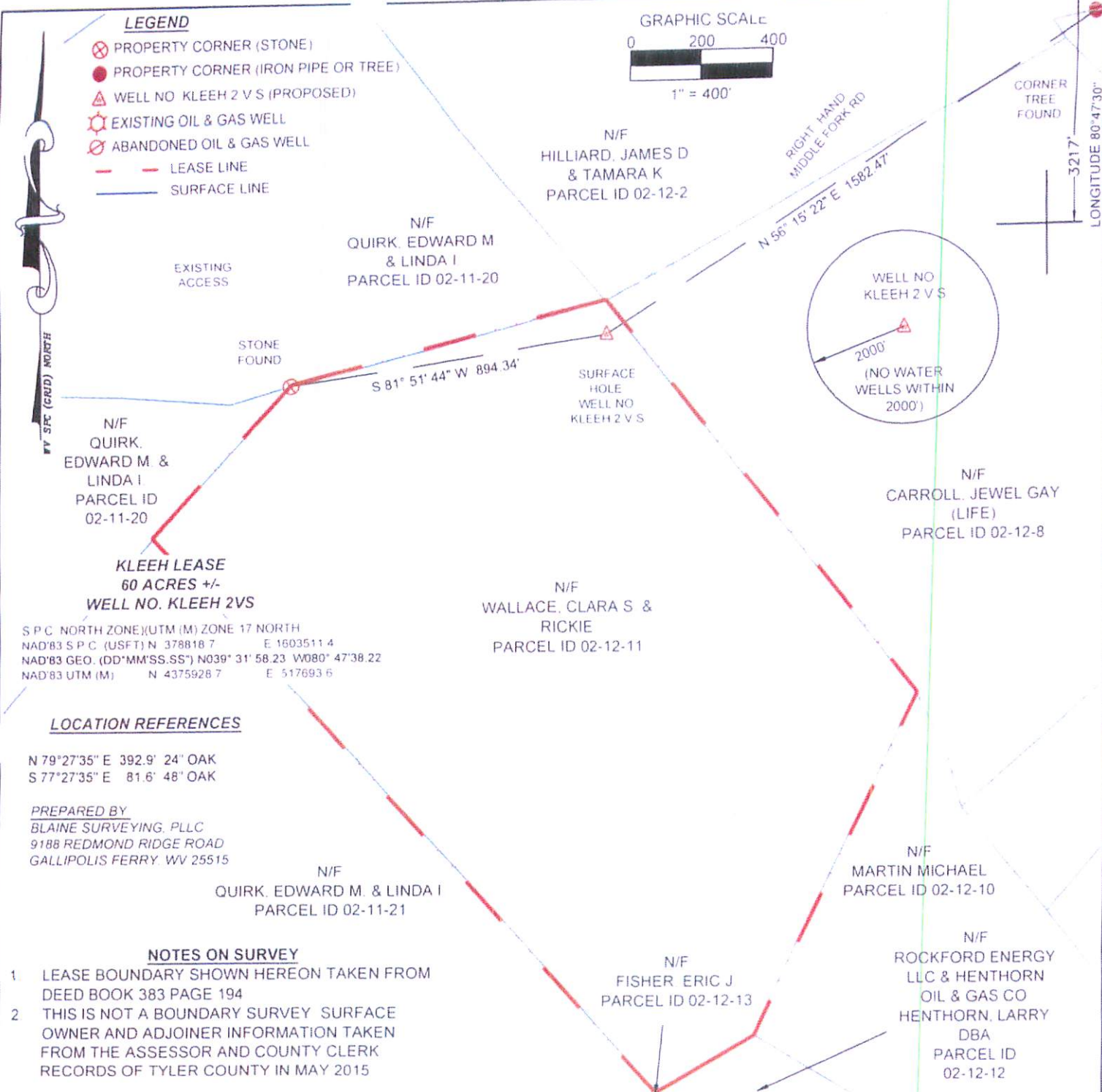
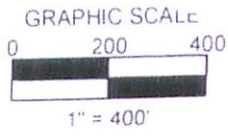
RECEIVED  
Office of Oil and Gas  
NOV 0 9 2015  
WV Department of  
Environmental Protection  
Reviewed by:

11/20/2015

LATITUDE 39°32'30" → 8.33'

**LEGEND**

- ⊗ PROPERTY CORNER (STONE)
- PROPERTY CORNER (IRON PIPE OR TREE)
- △ WELL NO KLEEH 2 V S (PROPOSED)
- ⊙ EXISTING OIL & GAS WELL
- ⊘ ABANDONED OIL & GAS WELL
- - - LEASE LINE
- SURFACE LINE



S.P.C. NORTH ZONE (UTM (M) ZONE 17 NORTH  
 NAD'83 S.P.C. (USFT) N 378818.7 E 1603511.4  
 NAD'83 GEO. (DD°MM'SS.SS") N039° 31' 58.23" W080° 47'38.22"  
 NAD'83 UTM (M) N 4375928.7 E 517693.6

**LOCATION REFERENCES**

N 79°27'35" E 392.9' 24" OAK  
 S 77°27'35" E 81.6' 48" OAK

PREPARED BY  
 BLAINE SURVEYING, PLLC  
 9188 REDMOND RIDGE ROAD  
 GALLIPOLIS FERRY, WV 25515

**NOTES ON SURVEY**

1. LEASE BOUNDARY SHOWN HEREON TAKEN FROM DEED BOOK 383 PAGE 194
2. THIS IS NOT A BOUNDARY SURVEY SURFACE OWNER AND ADJOINER INFORMATION TAKEN FROM THE ASSESSOR AND COUNTY CLERK RECORDS OF TYLER COUNTY IN MAY 2015

MINIMUM DEGREE OF ACCURACY: SUB-METER  
 FILE # KLEEH 2 V S  
 SCALE 1" = 400'

HORIZONTAL AND VERTICAL CONTROL DETERMINED BY DGPS (MAPPING GRADE TIE TO CORS NETWORK)



RECEIVED  
 Office of Oil and Gas  
 DEPARTMENT OF ENVIRONMENTAL PROTECTION  
 11/20/2015

Signed: *Jonathan Blaine*  
 L.L.S.: Environmental Protection 2220

(+) DENOTES LOCATION OF WELL ON UNITED STATES TOPOGRAPHIC MAPS  
 DATE MARCH 31, 2014  
 REVISED 2015  
 OPERATORS WELL NO. KLEEH 2 V S

API WELL NO. 47 095  
 STATE COUNTY PERMIT

STATE OF WEST VIRGINIA  
 DIVISION OF ENVIRONMENTAL PROTECTION  
 OFFICE OF OIL AND GAS  
 11/20/2015

API 47-95 - 2266 Farm name WALLACE, CLARA & RICKIE Well number KLEEH 2V SOUTH

CASING STRINGS	Hole Size	Casing Size	Depth	New or Used	Grade wt/ft	Basket Depth(s)	Did cement circulate (Y/N) * Provide details below*
Conductor	15"	13-3/8"	32'	NEW	H-40 36#/FT.		N/A
Surface	12-3/4"	9-5/8"	643'	NEW	J-55 26#/FT.		Y
Coal							
Intermediate 1	8 3/4"	7"	1390'	NEW	J-55 17#/FT.		Y
Intermediate 2							
Intermediate 3							
Production	6-1/2"	4-1/2"	3946'	NEW	J-55 10.5#/FT.		N
Tubing		1-1/2"	2890'				
Packer type and depth set		NONE					

Comment Details \_\_\_\_\_

CEMENT DATA	Class/Type of Cement	Number of Sacks	Slurry wt (ppg)	Yield (ft <sup>3</sup> /sks)	Volume (ft <sup>3</sup> )	Cement Top (MD)	WOC (hrs)
Conductor	NONE						
Surface	CLASS A	220				CTS	8 HRS.
Coal							
Intermediate 1	CLASS A	180				CTS	8 HRS.
Intermediate 2							
Intermediate 3							
Production	50/50 POZ	220				1440'	N/A
Tubing							

Drillers TD (ft) 4000' Loggers TD (ft) 3967'

Deepest formation penetrated SPEECHLEY Plug back to (ft) \_\_\_\_\_

Plug back procedure \_\_\_\_\_

Kick off depth (ft) \_\_\_\_\_

Check all wireline logs run  
 caliper     density     deviated/directional     induction  
 neutron     resistivity     gamma ray     temperature     sonic

Well cored  Yes  No    Conventional    Sidewall    Were cuttings collected  Yes  No

DESCRIBE THE CENTRALIZER PLACEMENT USED FOR EACH CASING STRING \_\_\_\_\_

6 - 4-1/2" STRING 3070, 2946, 2904, 2551, 2432, 2314

RECEIVED  
Office of Oil and Gas

WAS WELL COMPLETED AS SHOT HOLE  Yes  No    DETAILS \_\_\_\_\_ NOV 09 2015

WAS WELL COMPLETED OPEN HOLE?  Yes  No    DETAILS \_\_\_\_\_ WV Department of Environmental Protection

WERE TRACERS USED  Yes  No    TYPE OF TRACER(S) USED \_\_\_\_\_

11/20/2015





WELL: Alliance Petroleum Corporation #2V South Kleeh

LOCATION: Ellsworth District, Tyler County, West Virginia.

PERMIT NUMBER: 47-095-02266.

ELEVATION: 1172' Ground.

STATUS: Preparing to complete as a gas producer.

CASING: 7" @ 1400'.

TOTAL DEPTH: 4000' Driller 3967' Logger.

CONTRACTOR: Nexus Drilling Co.

TOOLS: Rotary.

COMPLETED DRILLING: 7/21/2015.

FORMATION AT TOTAL DEPTH: Devonian shale.

ELECTRICAL SURVEYS: Gamma Ray- Compensated Density- Neutron-Caliper- Temperature- Induction by Appalachian Well Surveys.

SHOWS: A very good show of gas (background of 100 units to a maximum of approximately 1400 units) was recorded on the mud log in the Gordon Stray Sandstone at 2920'. A good show of gas was recorded in the Big Injun Sandstone (background of 60 units to a maximum of approximately 300 units @ 2130'). Small shows of gas were noted in the Warren, Gantz, Weir, Keener and 2<sup>nd</sup> Salt Sand. No fluorescence noted on the mud log.

FORMATION TOPS:	1 <sup>st</sup> Salt Sand	1632'	- 460
	2 <sup>nd</sup> Salt Sand	1744'	- 572
	Maxon Sandstone	2019'	- 847
	Big Lime	2063'	- 891
	Keener Sandstone	2113'	- 941
	Big Injun Sandstone	2130'	- 958
	Weir Sandstone	2472'	-1300
	Gantz Sandstone	2721'	-1549
	Gordon Stray Sandstone	2867'	-1695
	Gordon Sandstone	2972'	-1800
	4 <sup>th</sup> Sand	3069'	-1897
	5 <sup>th</sup> Sand	3118'	-1946
	Bayard Sandstone	3167'	-1995
	Warren Sandstone	3638'	-2466

RECEIVED  
Office of Oil and Gas  
NOV 19 2015  
WV Department of  
Environmental Protection

11/20/2015

Speechley Sandstone	3799'	-2627
---------------------	-------	-------

## STRUCTURAL COMPARISON:

	Alliance Petroleum Kleeh 2VSouth	Alliance Petroleum Harris 3V
Big Lime	- 891	- 896
Gordon Sandstone	-1800	-1791
Warren Sandstone	-2466	-2468

## GEOLOGY

The depths in this report are from the open hole logs. The mud log depths are approximately 10' deeper than the open hole depths.

I would first recommend completion of the Gordon Stray Sandstone. Upper and lower sections, as seen in the Harris 4V South, were noted in this well. However, the upper section (2867-2877') was poorly developed. I would treat only the lower section, 2910 to 2920'. It has good to very good porosity, good neutron-density crossover and low water saturations. A good show of gas was noted on the temperature log, even though the zone had over 1000' of fluid above it during the logging. The show indicated by the gas detector is hard to quantify because it happened during a connection. Before drilling this zone, the background gas was around 100 units and the connection gas was in the 300 to 400 unit range. The connection gas when this zone was drilled was 1634 units. The gas then fell slowly back to around 600 units before the next connection, which had 2049 units of connection gas. Background gas then measured around 500 units and slowly fell to around 300 units at TD.

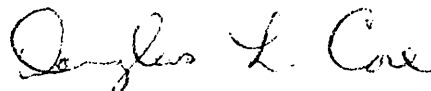
Additional zones, where shows were noted, are the Warren, Gantz, Weir, Big Injun, Keener and 2<sup>nd</sup> Salt Sandstones. The Warren Sandstone (3638-3694') had a small show of gas (background of 350 units to a maximum of 385 units). However, the development of this zone is similar to that seen in the Yurigan 1V, where a completion was unsuccessful. Therefore, I would not attempt completion of this zone, at this time. The Gantz (2721-2741'), had very good porosity in the upper portion, but was very thin (4'). A small show of gas was noted on the mud log (background of 100 units to a maximum of 150 units). I do not believe this zone would be commercial by itself, but may contribute some gas if completed with the Weir. The Weir (2472-2598'), had very good porosity and neutron-density crossover in the central portion (2536-2552'). Two small shows of gas were noted on the mud log (background of 100 units to a maximum of 150 units). Once we attempt a completion of this zone in the Harris 3V, we will have a better idea of its potential.

The Big Injun had a good show of gas on the gas detector at 21300' (background of 60 units to a maximum of approximately 300 units). Again, this show was hard to quantify because it occurred at a connection.

RECEIVED  
Office of Oil and Gas  
NOV 9 2015  
This zone  
WV Department of  
Environmental Protection

looks very similar to the Yurigan 1V and would probably produce a large amount of water if completed. The Keener, 2113 -2122', had a small show of gas on the mud log (background of 35 units to a maximum of 63 units). This zone showed fair porosity development and low water saturations. No gas flow was noted on the temperature log. This zone may contribute some gas, but is probably not economical by itself. A small show of gas was noted in the 2<sup>nd</sup> Salt Sand at 1855' (background of 17 units to a maximum of 98 units). However, water was also encountered in this zone, and I would not attempt a completion.

Respectfully submitted,



NATIONAL MINERALS CORPORATION  
By: Douglas L. Core, President

July 24, 2015

RECEIVED  
Office of Oil and Gas  
NOV 09 2015  
WV Department of  
Environmental Protection

11/20/2015