



# ANTERO RESOURCES CORPORATION

Location: Tyler County, WV  
 Field: Tyler  
 Facility: Edna Monroe Pad

Slot: Slot #08  
 Well: Leaseburg Unit 1H  
 Wellbore: Leaseburg Unit 1H PWB



API: 47-095-02282-0000  
 BHI Job #: 8365445  
 Rig: Patterson 343  
 Duration: 01/31/2017-02/03/2017

Plot reference wellpath is Leaseburg Unit 1H PWB Rev-A.0	Grid System: NAD27 / UTM Zone 17 North, US feet
True vertical depths are referenced to Patterson 343 (RKB)	* = Wellpath was transformed from a different geodetic datum.
Measured depths are referenced to Patterson 343 (RKB)	North Reference: Grid north
Patterson 343 (RKB) to Mean Sea Level: 1069 feet	Scale: True distance
Mean Sea Level to Mud line (At Slot: Slot #08): -1044 feet	Depths are in feet
Coordinates are in feet referenced to Slot	Created by: delaset on 2017-02-07
	Database: WA_MPL_EasternUS_Defn

Gyrodatta MS Gyro <8-3/4"> (100°-5579') : 0.45° Inc, 112.00ft MD, 112.00ft TVD, 0.29ft VS

Location Information				
Facility Name	Grid East (US ft)	Grid North (US ft)	Latitude	Longitude
Edna Monroe Pad	1676182.158	14315855.438	39°25'21.620"N	80°52'24.070"W
Slot	Local N (ft)	Local E (ft)	Grid East (US ft)	Grid North (US ft)
Slot #08	-29.34	3.96	1676186.120	14315826.110
			39°25'21.330"N	80°52'24.020"W
Comment: Leaseburg Unit 1H				
Patterson 343 (RKB) to Mud line (At Slot: Slot #08)			25ft	
Mean Sea Level to Mud line (At Slot: Slot #08)			-1044ft	
Patterson 343 (RKB) to Mean Sea Level			1069ft	

Well Profile Data								
Design Comment	MD (ft)	Inc (°)	Az (°)	TVD (ft)	Local N (ft)	Local E (ft)	DLS (°/100ft)	VS (ft)
Tie On	5591.00	8.900	204.420	5553.80	-398.53	-196.79	0.00	-310.03
Proj. to Bottom	5760.00	11.640	196.640	5720.09	-426.77	-207.08	1.81	-333.23
Curve KOP	5781.50	11.640	196.640	5741.14	-430.93	-208.32	0.00	-336.73
End of 3D Arc	6507.46	49.869	328.052	6386.80	-249.85	-392.14	8.00	-104.70
POE	6719.80	70.998	330.508	6491.00	-91.78	-485.58	10.00	75.49
Landing Pt.	6882.32	90.500	330.508	6517.00	47.17	-564.17	12.00	232.70
On Azimuth	7215.64	90.500	340.508	6514.08	350.10	-702.17	3.00	564.32
BHL	15700.84	90.500	340.508	6440.04	8348.70	-3533.34	0.00	9049.19

Well Data			
Slot	Well	Wellbore	Wellpath
Slot #08	Leaseburg Unit 1H	Leaseburg Unit 1H AWB	Leaseburg Unit 1H AWP Proj: 15734'
Slot #08	Leaseburg Unit 1H	Leaseburg Unit 1H PWB	Leaseburg Unit 1H PWP Rev-A.0

BHI AT Curve <8-1/2"> (5591°)(5735'-15709') : 13.91° Inc, 5735.00ft MD, 5694.93ft TVD, -332.55ft VS

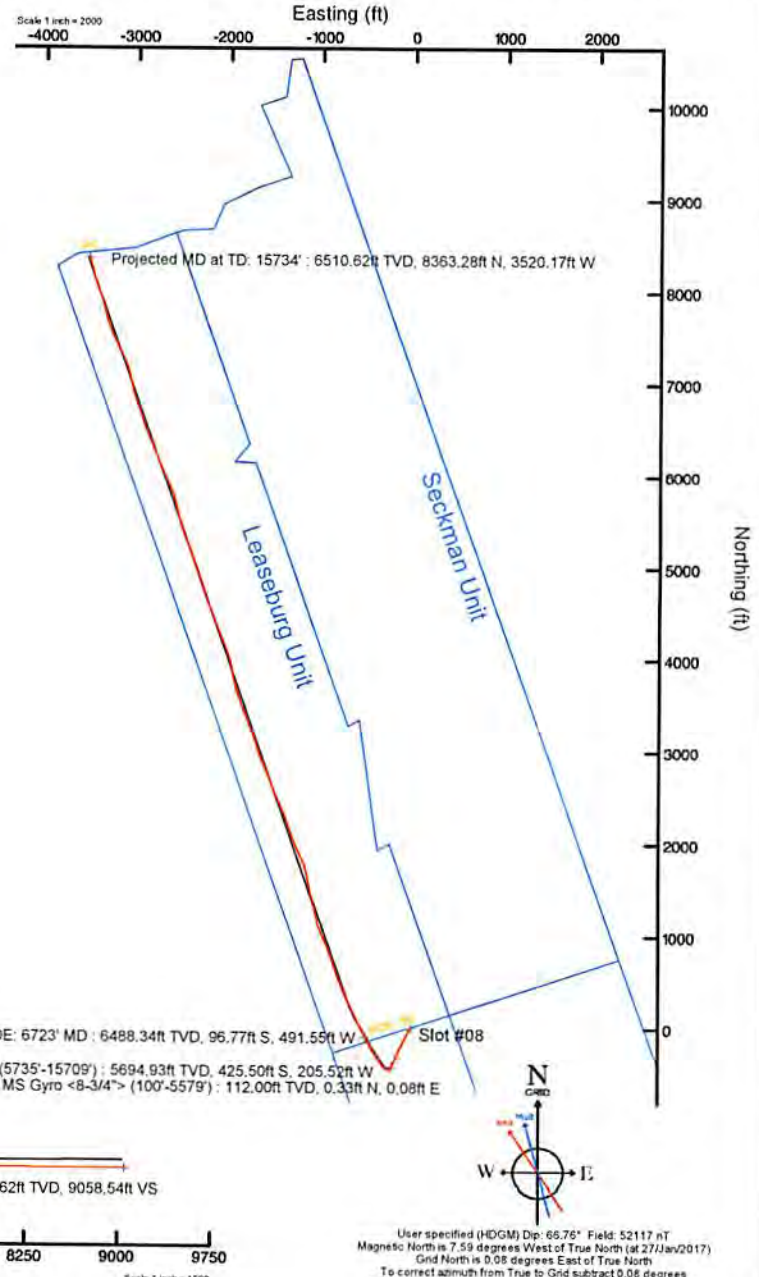
Marcellus POE: 6723' MD : 72.73° Inc, 6723.00ft MD, 6488.34ft TVD, 72.78ft VS

Projected MD at TD: 15734' : 89.88° Inc, 15734.00ft MD, 6510.62ft TVD, 9058.54ft VS

Marcellus POE: 6723' MD : 6488.34ft TVD, 96.77ft S, 491.59ft W

BHI AT Curve <8-1/2"> (5591°)(5735'-15709') : 5694.93ft TVD, 425.50ft S, 205.52ft W

Gyrodatta MS Gyro <8-3/4"> (100°-5579') : 112.00ft TVD, 0.33ft N, 0.08ft E



True Vertical Depth (ft)

Vertical Section (ft)

Azimuth 340.51° with reference 0.00 N, 0.00 E

User specified (HDGM) Dip: 65.76° Field: 52117 nT  
 Magnetic North is 7.59 degrees West of True North (at 27/Jan/2017)  
 Grid North is 0.08 degrees East of True North  
 To correct azimuth from True to Grid subtract 0.08 degrees  
 To correct azimuth from Magnetic to Grid subtract 7.67 degrees



# Actual Wellpath Report

Leaseburg Unit 1H AWP Proj: 15734'  
Page 1 of 10



REFERENCE WELLPATH IDENTIFICATION			
Operator	ANTERO RESOURCES CORPORATION	Slot	Slot #08
Area	Tyler County, WV	Well	Leaseburg Unit 1H
Field	Tyler	Wellbore	Leaseburg Unit 1H AWB
Facility	Edna Monroe Pad		

REPORT SETUP INFORMATION			
Projection System	NAD27 / UTM Zone 17 North, US feet	Software System	WellArchitect® 5.0
North Reference	Grid	User	Delaset
Scale	0.999601	Report Generated	07/Feb/2017 at 15:41
Convergence at slot	0.09° East	Database/Source file	WA_MPL_EasternUS_Defn/Leaseburg_Unit_1H_AWP_Proj_15734_.xml

WELLPATH LOCATION						
	Local coordinates		Grid coordinates		Geographic coordinates	
	North[ft]	East[ft]	Easting[US ft]	Northing[US ft]	Latitude	Longitude
Slot Location	-29.34	3.96	1676186.12	14315826.11	39°25'21.330"N	80°52'24.020"W
Facility Reference Pt			1676182.16	14315855.44	39°25'21.620"N	80°52'24.070"W
Field Reference Pt			0.00	0.00	0°00'00.000"	85°29'19.301"W

WELLPATH DATUM			
Calculation method	Minimum curvature	Patterson 343 (RKB) to Facility Vertical Datum	25.00ft
Horizontal Reference Pt	Slot	Patterson 343 (RKB) to Mean Sea Level	1069.00ft
Vertical Reference Pt	Patterson 343 (RKB)	Patterson 343 (RKB) to Mud Line at Slot (Slot #08)	25.00ft
MD Reference Pt	Patterson 343 (RKB)	Section Origin	N 0.00, E 0.00 ft
Field Vertical Reference	Mean Sea Level	Section Azimuth	340.51°



# Actual Wellpath Report

Leaseburg Unit 1H AWP Proj: 15734'



Operator	Area	Field	Facility
ANTERO RESOURCES CORPORATION	Tyler County, WV	Tyler	Edna Monroe Pad
Slot #08	Well	Leaseburg Unit 1H AWP	Wellbore

## REFERENCE WELLPATH IDENTIFICATION

MD	Inclination	Azimuth	TVD	Vent Sect	North	East	Grid East	Grid North	Latitude	Longitude	Closure Dist	Closure Dir	DLS	Build Rate	Turn Rate	Comments
7180.00	90.860	334.450	6510.99	524.27	312.65	-687.96	1675498.44	14316138.63	39°25'24.429"N	80°52'32.781"W	755.67	294.440	0.48	0.00	0.48	
7274.00	90.800	336.040	6509.63	617.86	398.00	-727.31	1675459.10	14316223.95	39°25'25.274"N	80°52'33.281"W	829.08	298.689	1.68	-0.06	2.05	
7369.00	90.770	337.980	6508.33	712.67	485.45	-764.40	1675422.03	14316311.36	39°25'26.138"N	80°52'33.752"W	906.52	302.418	1.68	-0.03	2.05	
7463.00	90.800	340.080	6507.04	806.62	573.21	-798.03	1675388.41	14316399.09	39°25'27.006"N	80°52'34.179"W	982.56	305.688	2.22	0.03	2.22	
7557.00	90.860	342.840	6505.68	900.69	662.32	-827.91	1675358.54	14316488.16	39°25'27.887"N	80°52'34.558"W	1060.23	308.658	2.94	0.06	2.94	
7652.00	90.950	342.130	6504.18	995.52	752.90	-866.50	1675329.97	14316578.71	39°25'28.783"N	80°52'34.921"W	1140.37	311.317	3.71	0.09	-0.75	
7746.00	90.830	338.640	6502.72	1089.50	841.42	-888.04	1675298.43	14316667.19	39°25'29.658"N	80°52'35.321"W	1223.36	313.456	-0.13	-0.71	-0.75	
7840.00	90.650	335.940	6501.50	1183.33	928.12	-924.33	1675262.16	14316753.86	39°25'30.516"N	80°52'35.782"W	1309.88	315.117	2.88	-0.19	-2.87	
7934.00	90.830	335.340	6500.29	1276.98	1013.74	-963.10	1675223.41	14316839.44	39°25'31.362"N	80°52'36.275"W	1398.29	316.468	0.67	0.19	-0.64	
8028.00	90.310	342.690	6499.35	1370.88	1101.44	-996.73	1675189.79	14316927.11	39°25'32.230"N	80°52'36.702"W	1485.48	317.857	7.84	-0.55	7.82	
8123.00	90.400	346.720	6498.76	1465.61	1193.06	-1021.79	1675164.74	14317018.69	39°25'33.135"N	80°52'37.020"W	1570.81	319.422	4.24	0.09	4.24	
8217.00	90.340	346.710	6498.16	1559.05	1254.54	-1043.39	1675143.15	14317110.13	39°25'34.040"N	80°52'37.293"W	1654.90	320.914	0.06	-0.06	-0.01	
8311.00	90.120	346.000	6497.78	1652.56	1355.88	-1065.56	1675120.98	14317201.44	39°25'34.943"N	80°52'37.574"W	1740.25	322.244	0.79	-0.23	-0.76	
8406.00	90.120	346.240	6497.58	1747.11	1468.11	-1088.35	1675098.20	14317293.63	39°25'35.855"N	80°52'37.863"W	1827.53	323.449	0.25	0.00	0.25	
8500.00	90.280	350.020	6497.25	1840.26	1560.08	-1107.68	1675078.88	14317385.57	39°25'36.764"N	80°52'38.108"W	1913.33	324.625	4.02	0.17	4.02	
8594.00	90.060	349.910	6496.97	1932.98	1652.64	-1124.06	1675062.51	14317478.09	39°25'37.679"N	80°52'38.315"W	1998.69	325.778	-0.23	-0.12	-0.12	
8688.00	90.090	342.610	6496.85	2026.45	1743.89	-1146.37	1675040.20	14317569.30	39°25'38.581"N	80°52'38.598"W	2086.94	326.680	7.77	0.03	-7.77	
8783.00	90.090	333.680	6496.70	2121.27	1831.98	-1181.70	1675004.89	14317657.35	39°25'39.452"N	80°52'39.046"W	2180.04	327.176	9.40	0.00	-9.40	
8876.00	90.220	336.790	6496.45	2213.86	1916.41	-1220.66	1674965.95	14317741.75	39°25'40.287"N	80°52'39.541"W	2272.14	327.505	3.35	0.14	3.34	
8971.00	90.000	337.060	6496.27	2308.68	2003.81	-1257.89	1674928.73	14317829.12	39°25'41.152"N	80°52'40.014"W	2365.91	327.881	0.37	-0.23	0.28	
9064.00	90.050	338.080	6496.22	2401.55	2089.77	-1293.37	1674893.26	14317915.05	39°25'42.002"N	80°52'40.465"W	2457.64	328.248	1.10	0.06	1.10	
9159.00	90.430	341.340	6495.81	2496.53	2178.87	-1326.31	1674860.34	14318004.10	39°25'42.883"N	80°52'40.883"W	2550.80	328.670	3.45	0.39	3.43	
9253.00	90.400	340.210	6495.13	2590.53	2267.62	-1357.26	1674794.60	14318180.08	39°25'44.624"N	80°52'41.276"W	2642.78	329.098	1.20	-0.03	-1.20	
9347.00	90.340	336.310	6494.52	2684.43	2354.92	-1392.07	1674716.64	14318352.16	39°25'46.326"N	80°52'42.216"W	2735.60	329.411	4.15	-0.06	-4.15	
9442.00	90.370	334.960	6493.93	2779.08	2441.45	-1431.26	1674755.43	14318526.58	39°25'48.079"N	80°52'42.216"W	2830.05	329.620	1.42	0.03	-1.42	
9536.00	90.280	336.270	6493.40	2872.74	2527.06	-1470.07	1674716.64	14318700.84	39°25'49.776"N	80°52'44.523"W	2927.28	330.715	2.51	-0.29	-2.49	
9630.00	90.310	338.590	6492.92	2966.60	2613.86	-1506.15	1674680.58	14318874.85	39°25'48.925"N	80°52'44.042"W	3020.74	330.553	1.98	-0.17	-1.97	
9725.00	90.280	339.260	6492.43	3061.56	2702.50	-1540.31	1674646.43	14318527.53	39°25'48.061"N	80°52'43.601"W	3110.63	330.319	0.71	-0.03	0.71	
9819.00	90.120	337.410	6492.10	3155.48	2789.85	-1575.01	1674611.74	14318614.85	39°25'48.925"N	80°52'44.042"W	3203.74	330.553	1.98	-0.17	-1.97	
9913.00	89.850	335.070	6492.12	3249.22	2875.88	-1612.88	1674573.89	14318700.84	39°25'49.776"N	80°52'44.523"W	3297.28	330.715	2.51	-0.29	-2.49	



# Actual Wellpath Report

Leaseburg Unit 1H AWP Proj: 15734



## REFERENCE WELLPATH IDENTIFICATION

Operator	ANTERO RESOURCES CORPORATION
Area	Tyler County, WV
Field	Tyler
Facility	Edna Monroe Pad
Slot	Slot #08
Leaseburg Unit 1H	Well
Leaseburg Unit 1H AWP	Wellbore

MD	Inclination	Azimuth	TVD	Vert Sect	North	East	Grid East	Grid North	Latitude	Longitude	Closure Dist	Closure Dir	DLS	Build Rate	Turn Rate	Comments
[ft]	[deg]	[deg]	[ft]	[ft]	[ft]	[ft]	[ft]	[ft]	[ft]	[ft]	[ft]	[ft]	[ft]	[ft/100ft]	[ft/100ft]	[ft/100ft]
10008.00	90.220	339.720	6492.07	3344.05	2963.56	-1649.38	1674537.40	14318788.48	39.2550.643°N	80.5244.987°W	3391.63	330.902	4.91	0.39	4.89	
10102.00	90.430	344.440	6491.53	3437.99	3052.77	-1678.30	1674508.49	14318877.86	39.2551.527°N	80.5245.354°W	3483.87	331.201	5.03	0.22	5.02	
10197.00	89.850	341.240	6491.30	3532.90	3143.73	-1706.32	1674480.48	14318968.58	39.2552.424°N	80.5245.709°W	3576.95	331.508	3.42	-0.61	3.37	
10291.00	89.970	337.860	6491.45	3626.87	3231.79	-1739.16	1674447.65	14319056.61	39.2553.295°N	80.5246.126°W	3670.04	331.713	3.60	-0.13	-3.60	
10385.00	89.940	338.150	6491.52	3720.78	3318.95	-1774.37	1674412.46	14319143.73	39.2554.157°N	80.5246.574°W	3763.48	331.870	0.31	-0.03	0.31	
10480.00	89.800	337.970	6491.62	3815.69	3407.07	-1808.86	1674376.98	14319231.82	39.2555.028°N	80.5247.025°W	3857.94	332.022	0.19	0.00	-0.19	
10574.00	89.600	338.820	6492.00	3909.63	3494.47	-1844.47	1674342.39	14319319.18	39.2555.892°N	80.5247.464°W	3951.38	332.174	0.97	-0.36	0.90	
10668.00	89.820	339.910	6492.47	4003.60	3582.43	-1877.60	1674309.27	14319407.11	39.2556.762°N	80.5247.885°W	4044.65	332.340	1.18	0.23	1.16	
10762.00	89.970	344.220	6492.65	4097.55	3671.84	-1908.54	1674280.35	14319496.48	39.2557.646°N	80.5248.252°W	4137.31	332.560	4.59	0.16	4.59	
10856.00	90.030	347.380	6492.65	4191.13	3762.96	-1929.59	1674257.31	14319587.56	39.2558.547°N	80.5248.544°W	4228.85	332.852	3.37	0.06	3.37	
10950.00	89.910	349.580	6492.70	4284.22	3855.06	-1948.35	1674238.55	14319679.63	39.2559.458°N	80.5248.782°W	4319.44	333.188	2.33	-0.13	2.33	
11044.00	90.280	349.820	6492.54	4377.01	3947.55	-1965.16	1674221.75	14319772.08	39.2600.372°N	80.5248.994°W	4409.65	333.535	0.47	0.39	0.26	
11139.00	90.150	340.820	6492.18	4471.58	4039.35	-1989.21	1674197.71	14319863.84	39.2601.280°N	80.5249.299°W	4502.59	333.782	9.47	-0.14	-9.47	
11233.00	89.910	337.800	6492.13	4565.55	4127.28	-2022.41	1674164.52	14319951.74	39.2602.149°N	80.5249.721°W	4596.15	333.895	3.22	-0.26	-3.21	
11327.00	89.810	338.050	6492.28	4659.43	4214.24	-2058.11	1674128.83	14320038.66	39.2603.009°N	80.5250.175°W	4689.95	333.970	0.26	0.00	-0.26	
11422.00	90.030	338.050	6492.33	4754.33	4302.20	-2094.00	1674092.96	14320126.58	39.2603.879°N	80.5250.631°W	4784.74	334.047	0.53	0.13	0.52	
11516.00	89.970	338.270	6492.33	4848.25	4389.45	-2128.97	1674058.00	14320213.80	39.2604.742°N	80.5251.075°W	4878.50	334.126	0.24	-0.06	0.23	
11610.00	89.720	339.270	6492.59	4942.20	4477.07	-2163.01	1674023.98	14320301.39	39.2605.608°N	80.5251.507°W	4972.20	334.213	1.10	-0.27	1.06	
11704.00	89.850	339.810	6492.84	5036.19	4566.14	-2195.87	1673991.13	14320389.42	39.2606.479°N	80.5251.924°W	5065.80	334.312	0.59	0.14	0.57	
11798.00	89.780	339.660	6493.24	5130.18	4653.32	-2228.42	1673958.59	14320477.57	39.2607.351°N	80.5252.338°W	5159.39	334.411	0.18	-0.07	-0.16	
11893.00	89.720	338.940	6493.66	5225.16	4742.19	-2262.00	1673925.02	14320566.40	39.2608.230°N	80.5252.764°W	5254.04	334.499	0.76	-0.06	-0.76	
11987.00	89.480	340.250	6493.85	5307.10	4830.28	-2294.78	1673892.26	14320654.46	39.2609.101°N	80.5253.181°W	5347.67	334.588	1.42	-0.26	1.39	
12081.00	89.540	341.350	6495.12	5319.14	4830.28	-2294.78	1673892.26	14320654.46	39.2609.101°N	80.5253.181°W	5347.67	334.588	1.42	-0.26	1.39	
12175.00	89.570	342.400	6495.85	5307.10	5008.38	-2354.93	1673832.13	14320832.49	39.2610.862°N	80.5253.573°W	5441.13	334.696	1.17	0.06	1.17	
12270.00	89.540	341.840	6496.58	5302.06	5098.79	-2384.09	1673802.98	14320922.86	39.2611.756°N	80.5254.314°W	5528.64	334.940	0.59	-0.03	-0.59	
12364.00	89.510	339.300	6497.36	5319.14	4919.05	-2325.69	1673861.36	14320743.19	39.2613.503°N	80.5255.129°W	5615.90	334.817	1.12	0.03	1.12	
12458.00	89.600	339.710	6498.09	5790.03	5275.47	-2448.27	1673738.83	14321099.47	39.2614.376°N	80.5255.540°W	5909.57	335.181	0.40	0.00	0.40	
12552.00	89.600	340.090	6498.75	5884.03	5363.75	-2480.57	1673706.54	14321187.71	39.2615.255°N	80.5255.928°W	6003.08	335.272	1.99	0.00	1.99	
12646.00	89.600	341.660	6499.41	5978.02	5452.63	-2511.14	1673675.99	14321276.56	39.2616.148°N	80.5256.255°W	6095.97	335.407	4.47	-0.06	4.47	



# Actual Wellpath Report

Leaseburg Unit 1H AWP Proj: 15734  
Page 7 of 10



## REFERENCE WELLPATH IDENTIFICATION

Operator	ANTERO RESOURCES CORPORATION
Area	Tyler County, WV
Field	Tyler
Facility	Edna Monroe Pad
Well	Leaseburg Unit 1H
Wellbore	Leaseburg Unit 1H AWB
Slot	Slot #08

## WELLPATH DATA (183 stations)

MD	Inclination	Azimuth	TVD	Vert Sect	North	East	Grid East	Grid North	Latitude	Longitude	Closure Dist	Closure Dir	DLS	Build Rate	Turn Rate	Comments
(ft)	(°)	(°)	(ft)	(ft)	(ft)	(ft)	(ft)	(ft)	(°N)	(°W)	(ft)	(°)	(ft)	(ft/100ft)	(ft/100ft)	
12835.00	89.480	348.120	6500.92	6166.17	5635.60	-2558.09	1673629.06	14321459.46	39°26'17.064"N	80°52'56.523"W	6189.01	335.586	2.06	-0.06	2.06	
12929.00	89.720	345.500	6501.58	6259.59	5727.11	-2579.53	1673607.62	14321550.93	39°26'17.968"N	80°52'56.795"W	6281.23	335.753	2.80	0.26	-2.79	
13023.00	89.380	338.430	6502.32	6353.50	5816.44	-2608.62	1673578.55	14321640.22	39°26'18.851"N	80°52'57.164"W	6374.62	335.844	7.53	-0.36	-7.52	
13118.00	89.780	336.370	6503.02	6448.35	5904.13	-2645.12	1673542.06	14321727.88	39°26'19.719"N	80°52'57.628"W	6469.58	335.867	2.21	0.42	-2.17	
13212.00	89.600	335.050	6503.63	6542.02	5989.81	-2683.79	1673503.41	14321813.52	39°26'20.566"N	80°52'58.119"W	6563.58	335.865	1.42	-0.19	-1.40	
13307.00	89.480	337.230	6504.29	6636.73	6076.68	-2722.21	1673465.00	14321900.36	39°26'21.425"N	80°52'58.608"W	6658.57	335.869	2.30	-0.13	2.29	
13401.00	89.660	338.330	6504.99	6730.62	6163.70	-2757.76	1673429.47	14321987.34	39°26'22.285"N	80°52'59.059"W	6752.51	335.895	1.19	0.19	1.17	
13496.00	89.780	337.950	6505.46	6825.54	6251.87	-2793.13	1673394.11	14322075.47	39°26'23.157"N	80°52'59.509"W	6847.44	335.926	0.42	0.13	-0.40	
13590.00	89.350	336.910	6506.17	6919.40	6338.66	-2829.21	1673358.05	14322162.23	39°26'24.016"N	80°52'59.967"W	6941.40	335.947	1.20	-0.46	-1.11	
13684.00	89.380	336.550	6507.21	7013.19	6425.01	-2866.34	1673320.83	14322248.55	39°26'24.870"N	80°53'00.438"W	7035.99	335.957	0.38	0.03	-0.38	
13779.00	89.720	333.240	6507.96	7108.08	6513.02	-2902.09	1673285.20	14322336.52	39°26'25.740"N	80°53'00.893"W	7130.32	335.983	2.85	0.36	2.83	
13873.00	89.850	342.360	6508.31	7202.06	6601.78	-2932.98	1673254.30	14322425.24	39°26'26.617"N	80°53'01.286"W	7223.98	336.046	3.32	0.14	3.32	
13967.00	89.970	340.780	6508.46	7296.04	6690.95	-2962.71	1673224.60	14322514.38	39°26'27.499"N	80°53'01.663"W	7317.55	336.117	1.69	0.13	-1.68	
14061.00	89.910	341.260	6508.56	7390.04	6779.84	-2993.28	1673194.04	14322603.24	39°26'28.378"N	80°53'02.051"W	7411.21	336.179	0.51	-0.06	0.51	
14156.00	90.120	342.760	6508.53	7485.01	6870.19	-3022.62	1673164.71	14322693.55	39°26'29.272"N	80°53'02.424"W	7505.72	336.252	1.59	0.22	1.58	
14250.00	90.180	347.880	6508.29	7578.64	6961.10	-3046.44	1673140.90	14322784.42	39°26'30.170"N	80°53'02.726"W	7598.53	336.364	5.45	0.06	5.45	
14344.00	90.150	346.430	6508.02	7672.01	7052.74	-3067.33	1673120.01	14322876.03	39°26'31.076"N	80°53'02.990"W	7690.88	336.495	1.54	-0.03	-1.54	
14438.00	90.030	343.490	6507.87	7765.71	7143.51	-3091.72	1673095.63	14322966.76	39°26'31.974"N	80°53'03.300"W	7783.86	336.597	3.13	-0.13	-3.13	
14532.00	89.940	338.490	6507.89	7859.68	7232.36	-3122.33	1673065.04	14323056.57	39°26'32.852"N	80°53'03.689"W	7877.56	336.649	5.32	-0.10	-5.32	
14626.00	89.820	333.910	6508.09	7953.39	7318.34	-3160.26	1673027.13	14323141.52	39°26'33.702"N	80°53'04.171"W	7971.53	336.644	4.87	-0.13	-4.87	
14720.00	89.820	334.190	6508.39	8046.79	7402.86	-3201.39	1672986.01	14323226.01	39°26'34.538"N	80°53'04.693"W	8065.43	336.614	1.28	-0.11	1.27	
14815.00	89.720	335.400	6508.77	8141.32	7488.81	-3241.84	1672945.57	14323311.92	39°26'35.388"N	80°53'05.208"W	8160.38	336.593	1.35	-0.06	1.35	
14909.00	89.660	336.670	6509.28	8235.03	7574.71	-3280.02	1672874.93	14323485.90	39°26'37.109"N	80°53'06.106"W	8348.19	336.622	6.60	0.17	6.60	
15003.00	89.820	342.870	6509.70	8328.97	7662.86	-3312.51	1672827.19	14323576.61	39°26'38.007"N	80°53'06.416"W	8441.19	336.714	4.38	0.22	4.37	
15197.00	90.030	346.980	6509.83	8422.67	7753.61	-3336.95	1672850.50	14323667.63	39°26'39.803"N	80°53'06.711"W	8534.06	336.812	2.87	-0.19	-2.86	
15286.00	89.970	340.830	6510.27	8516.29	7844.66	-3360.27	1672798.74	14323758.21	39°26'39.803"N	80°53'07.073"W	8628.57	336.875	3.64	0.13	-3.64	
15380.00	89.880	340.170	6510.20	8705.21	8023.89	-3420.12	1672767.37	14323846.79	39°26'40.679"N	80°53'07.471"W	8722.39	336.914	0.71	-0.10	-0.70	
15474.00	90.030	344.220	6510.27	8799.15	8113.37	-3448.86	1672738.65	14323936.23	39°26'41.564"N	80°53'07.836"W	8815.97	336.970	4.31	0.16	4.31	
15569.00	89.880	346.500	6510.35	8893.81	8205.28	-3472.87	1672714.65	14324028.10	39°26'42.472"N	80°53'08.141"W	8909.96	337.060	2.41	-0.16	2.40	



# Actual Wellpath Report

Leaseburg Unit 1H AWP Proj: 15734'

Page 8 of 10



## REFERENCE WELLPATH IDENTIFICATION

Operator	Slot #08
ANTERO RESOURCES CORPORATION	Leaseburg Unit 1H
Area	Leaseburg Unit 1H AWB
Field	
Facility	

## WELLPATH DATA (183 stations)

MD [ft]	Inclination [°]	Azimuth [°]	TVD [ft]	Vert.Sect [ft]	North [ft]	East [ft]	Grid East [US ft]	Grid North [US ft]	Latitude	Longitude	Closure Dist [ft]	Closure Dir [°]	DLS ["/100ft]	Build Rate ["/100ft]	Turn Rate ["/100ft]	Comments
15663.00	89.940	342.610	6510.49	8987.56	8295.87	-3497.89	1672689.63	14324118.65	39°26'43.368"N	80°53'08.458"W	9003.15	337.138	4.14	0.06	-4.14	
15709.00	89.880	341.280	6510.57	9033.54	8339.60	-3512.15	1672675.38	14324162.37	39°26'43.800"N	80°53'08.639"W	9048.98	337.162	2.89	-0.13	-2.89	
15734.00	89.880	341.280	6510.62	9058.54	8363.28	-3520.17	1672667.36	14324186.04	39°26'44.035"N	80°53'08.741"W	9073.92	337.173	0.00	0.00	0.00	Projected MD at TD: 15734'

## HOLE & CASING SECTIONS - Ref Wellbore: Leaseburg Unit 1H AWB Ref Wellpath: Leaseburg Unit 1H AWP Proj: 15734'

String/Diameter	Start MD [ft]	End MD [ft]	Interval [ft]	Start TVD [ft]	End TVD [ft]	Start N/S [ft]	Start E/W [ft]	End N/S [ft]	End E/W [ft]
20in Conductor	25.00	100.00	75.00	25.00	100.00	0.00	0.00	0.25	0.06
17.5in Open Hole	100.00	522.00	422.00	100.00	521.99	0.25	0.06	-0.67	0.68
13.375in Casing Surface	25.00	522.00	497.00	25.00	521.99	0.00	0.00	-0.67	0.68
12.25in Open Hole	522.00	2538.00	2016.00	521.99	2537.71	-0.67	0.68	-4.51	3.23
9.625in Casing Intermediate	25.00	2538.00	2513.00	25.00	2537.71	0.00	0.00	-4.51	3.23
8.75in Open Hole	2538.00	5760.00	3222.00	2537.71	5719.20	-4.51	3.23	-431.28	-207.03
8.5in Open Hole	5760.00	15734.00	9974.00	5719.20	6510.62	-431.28	-207.03	8363.28	-3520.17
5.5in Casing Production	25.00	15734.00	15709.00	25.00	6510.62	0.00	0.00	8363.28	-3520.17