



# ANTERO RESOURCES CORPORATION

Location: Tyler County, WV  
Field: Tyler  
Facility: Dale Pad

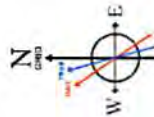
Slot: Slot #02  
Well: Johnston Unit 1H  
Wellbore: Johnston Unit 1H PWB

Plot reference wellbore is Johnston Unit 1H PWP Rev-A-0  
True vertical depths are referenced to PD 523 (RKB)  
Measured depths are referenced to PD 523 (RKB)  
PD 523 (RKB) to Mean Sea Level: 1036 feet  
Mean Sea Level to Mud line (At Slot Slot #02): -1017 feet  
Coordinates are in feet referenced to Slot

Location Information			
Facility Name	Grid East (US ft)	Grid North (US ft)	Longitude
Dale Pad	1679131.050	14319219.570	80°51'46.413"W
Local N (ft)	Local E (ft)	Grid North (US ft)	Longitude
45.50	89.26	14319285.050	80°51'45.274"W
Comment	Johnston Unit 1H		
PD 523 (RKB) to Mud line (At Slot Slot #02)	19R		
Mean Sea Level to Mud line (At Slot Slot #02)	-1017R		
PD 523 (RKB) to Mean Sea Level	1036R		

Well Data			
Slot	Well	Wellbore	Wellpath
Slot #02	Johnston Unit 1H	Johnston Unit 1H AWB	Johnston Unit 1H AWP Proj. 20246
Slot #02	Johnston Unit 1H	Johnston Unit 1H PWB	Johnston Unit 1H PWP Rev-A-0

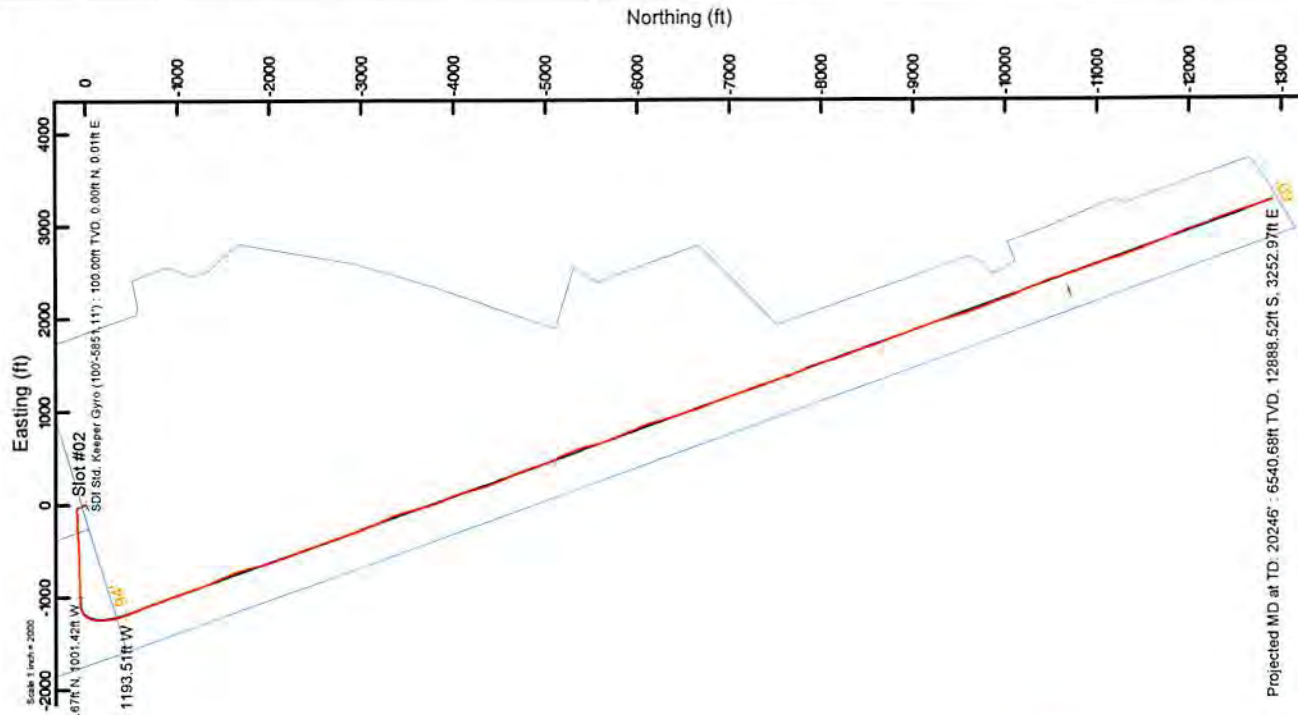
SDI Sid. Keeper Gyro (100°5851.11) : 0.01° Inc. 100.00ft TVD. 100.00ft TVD. 0.00ft VS



Magnetically Dip. 5827 Field: 52162.7T  
Magnetic Incl. 60.00 West of 15 (45102016)  
Grid North is 0.09 degrees East of True North  
To correct azimuth from True to Grid subtract 0.09 degrees  
To correct azimuth from Magnetic to Grid subtract 7.89 degrees

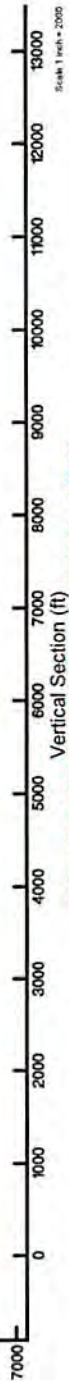
RECEIVED  
Office of Oil and Gas  
OCT 30 2016  
WV Department  
Environmental Protection

API #: 47-095-02307-0000  
BHI Job #: 8034652  
Rig: PD 523  
Duration: 07.03.2016-07.08.2016



BHI AT Curve  $\phi=8-1/2^{\circ}$  (5851.11) (5943-20188) : 26.97° Inc. 5943.00ft MD. 5712.70ft TVD. -405.33ft VS  
Marcellus: 6993' MD : 73.36° Inc. 6993.00ft MD. 6477.45ft TVD. -3.66ft VS

8/2019/2018



Projected MD at TD: 20246° : 6540.68ft TVD. 12888.52ft S. 3252.97ft E  
Projected MD at TD: 20246° : 90.30° Inc. 20246.00ft MD. 6540.68ft TVD. 13232.54ft VS



# Actual Wellpath Report

Johnston Unit 1H AWP Proj: 20246

Page 1 of 17



REFERENCE WELLPATH IDENTIFICATION			
Operator	ANTERO RESOURCES CORPORATION	Slot	Slot #02
Area	Tyler County, WV	Well	Johnston Unit 1H
Field	Tyler	Wellbore	Johnston Unit 1H AWB
Facility		Date Pad	

REPORT SETUP INFORMATION			
Projection System	NAD27 / UTM Zone 17 North, US feet	Software System	WellArchitect@ 5.0
North Reference	Grid	User	Hareluk
Scale	0.999602	Report Generated	7/21/2016 at 4:19:13 PM
Convergence at slot	0.09° East	Database/Source file	WA_MPL_EASTERNNUS_Defn/Johnston_Unit_1H_AWP_Proj_20246_.xml

WELLPATH LOCATION					
Local coordinates		Grid coordinates		Geographic coordinates	
North (ft)	East (ft)	Easting [US ft]	Northing [US ft]	Latitude	Longitude
45.50	89.26	1679220.31	14319265.05	39°25'55.288"N	80°51'45.274"W
Facility Reference Pt		1679131.09	14319219.57	39°25'54.840"N	80°51'46.413"W
Field Reference Pt		0.00	0.00	0°00'00.000"	85°29'19.301"W

WELLPATH DATUM			
Calculation method	Minimum curvature	PD 523 (RKB) to Facility Vertical Datum	19.00ft
Horizontal Reference Pt	Slot	PD 523 (RKB) to Mean Sea Level	1036.00ft
Vertical Reference Pt	PD 523 (RKB)	PD 523 (RKB) to Mud Line at Slot (Slot #02)	19.00ft
MD Reference Pt	PD 523 (RKB)	Section Origin	N 0.00, E 0.00 ft
Field Vertical Reference	Mean Sea Level	Section Azimuth	160.40°

RECEIVED  
Office of Oil and Gas  
OCT 30 2017  
WV Department of  
Environmental Protection



# Actual Wellpath Report

Johnston Unit 1H AWP Proj: 20246'

Page 2 of 17



REFERENCE WELLPATH IDENTIFICATION				
Operator	ANTERO RESOURCES CORPORATION		Slot	Slot #02
Area	Tyler County, WV		Well	Johnston Unit 1H
Field	Tyler		Wellbore	Johnston Unit 1H AWB
Facility	Dale Pad			

WELLPATH DATA (413 stations) † = interpolated/extrapolated station																
MD (ft)	Inclination (°)	Azimuth (°)	TVD (ft)	Vert Sect (ft)	North (ft)	East (ft)	Grid East (US ft)	Grid North (US ft)	Latitude	Longitude	Closure Dist (ft)	Closure Dir (°)	DLS (°/100ft)	Build Rate (°/100ft)	Turn Rate (°/100ft)	Comments
0.00	0.000	92.200	0.00	0.00	0.00	0.00	1679220.31	14319265.05	39°25'55.288"N	80°51'45.274"W	0.00	0.000	0.00	0.00	0.00	
19.00	0.000	92.200	19.00	0.00	0.00	0.00	1679220.31	14319265.05	39°25'55.288"N	80°51'45.274"W	0.00	0.000	0.00	0.00	0.00	
100.00	0.010	92.200	100.00	0.00	0.00	0.01	1679220.32	14319265.05	39°25'55.288"N	80°51'45.274"W	0.01	92.200	0.01	0.01	113.83	SDI Std. Keeper Gyro (100'-5851.11')
125.00	0.140	222.610	125.00	0.02	-0.02	-0.01	1679220.30	14319265.03	39°25'55.288"N	80°51'45.274"W	0.03	206.600	0.59	0.52	521.64	
150.00	0.140	205.710	150.00	0.05	-0.07	-0.05	1679220.26	14319264.98	39°25'55.288"N	80°51'45.275"W	0.09	211.916	0.16	0.00	-67.60	
175.00	0.130	214.700	175.00	0.09	-0.12	-0.07	1679220.24	14319264.93	39°25'55.287"N	80°51'45.275"W	0.14	211.153	0.09	-0.04	35.96	
200.00	0.170	249.910	200.00	0.11	-0.16	-0.13	1679220.18	14319264.89	39°25'55.287"N	80°51'45.276"W	0.20	218.210	0.39	0.16	140.84	
225.00	0.170	235.240	225.00	0.12	-0.19	-0.19	1679220.12	14319264.86	39°25'55.286"N	80°51'45.277"W	0.27	224.616	0.17	0.00	-58.66	
250.00	0.130	227.930	250.00	0.14	-0.23	-0.24	1679220.07	14319264.82	39°25'55.286"N	80°51'45.277"W	0.34	226.058	0.18	-0.16	-29.24	
275.00	0.260	208.320	275.00	0.19	-0.30	-0.29	1679220.02	14319264.75	39°25'55.285"N	80°51'45.278"W	0.42	223.824	0.58	0.52	-78.44	
300.00	0.310	209.400	300.00	0.27	-0.41	-0.35	1679219.96	14319264.64	39°25'55.284"N	80°51'45.279"W	0.54	220.430	0.20	0.20	4.32	
325.00	0.270	229.020	325.00	0.34	-0.51	-0.43	1679219.88	14319264.54	39°25'55.283"N	80°51'45.280"W	0.67	220.073	0.43	-0.16	78.48	
350.00	0.310	235.100	350.00	0.38	-0.59	-0.53	1679219.78	14319264.46	39°25'55.283"N	80°51'45.281"W	0.79	222.012	0.20	0.16	24.32	
375.00	0.330	234.130	375.00	0.41	-0.67	-0.64	1679219.67	14319264.38	39°25'55.282"N	80°51'45.282"W	0.93	223.895	0.08	0.08	-3.88	
400.00	0.480	195.570	400.00	0.52	-0.81	-0.73	1679219.58	14319264.24	39°25'55.280"N	80°51'45.284"W	1.09	221.955	1.21	0.60	-154.24	
425.00	0.270	180.450	425.00	0.66	-0.97	-0.76	1679219.55	14319264.08	39°25'55.279"N	80°51'45.284"W	1.23	217.967	0.92	-0.84	-60.48	
450.00	0.280	208.710	450.00	0.76	-1.08	-0.79	1679219.52	14319263.97	39°25'55.278"N	80°51'45.284"W	1.34	216.010	0.54	0.04	113.04	
475.00	0.210	197.900	475.00	0.83	-1.18	-0.83	1679219.48	14319263.87	39°25'55.277"N	80°51'45.285"W	1.44	215.136	0.33	-0.28	-43.24	
500.00	0.240	112.150	500.00	0.90	-1.24	-0.80	1679219.51	14319263.81	39°25'55.276"N	80°51'45.284"W	1.48	212.628	1.23	0.12	-343.00	
525.00	0.280	61.100	525.00	0.93	-1.23	-0.69	1679219.62	14319263.82	39°25'55.276"N	80°51'45.283"W	1.42	209.363	0.91	0.16	-204.20	
550.00	0.820	35.320	549.99	0.82	-1.06	-0.54	1679219.77	14319263.99	39°25'55.278"N	80°51'45.281"W	1.19	206.914	2.32	2.16	-103.12	
575.00	1.250	26.840	574.99	0.53	-0.67	-0.31	1679220.00	14319264.38	39°25'55.282"N	80°51'45.278"W	0.74	204.908	1.82	1.72	-33.92	
600.00	1.530	18.790	599.98	0.08	-0.11	-0.08	1679220.23	14319264.94	39°25'55.287"N	80°51'45.275"W	0.14	216.143	1.36	1.12	-32.20	
625.00	1.850	16.160	624.97	-0.51	0.59	0.14	1679220.45	14319265.64	39°25'55.294"N	80°51'45.272"W	0.61	13.254	1.32	1.28	-10.52	
650.00	2.080	16.470	649.96	-1.21	1.42	0.38	1679220.69	14319266.47	39°25'55.302"N	80°51'45.269"W	1.47	15.047	0.92	0.92	1.24	
675.00	2.680	9.030	674.94	-2.09	2.43	0.60	1679220.91	14319267.48	39°25'55.312"N	80°51'45.267"W	2.50	13.902	2.69	2.40	-29.76	
700.00	3.020	5.830	699.91	-3.19	3.66	0.76	1679221.07	14319268.71	39°25'55.325"N	80°51'45.264"W	3.74	11.724	1.50	1.36	-12.80	
725.00	3.380	2.130	724.87	-4.47	5.05	0.85	1679221.16	14319270.10	39°25'55.338"N	80°51'45.263"W	5.12	9.594	1.66	1.44	-14.80	
750.00	3.670	0.370	749.82	-5.91	6.59	0.89	1679221.20	14319271.64	39°25'55.353"N	80°51'45.263"W	6.65	7.664	1.24	1.16	-7.04	
775.00	3.820	359.900	774.77	-7.45	8.22	0.89	1679221.20	14319273.27	39°25'55.370"N	80°51'45.263"W	8.27	6.181	0.61	0.60	-1.86	

RECEIVED  
 Office of Oil and Gas  
 OCT 30 2017  
 WV Department of  
 Environmental Protection



# Actual Wellpath Report

Johnston Unit 1H AWP Proj: 20246'  
Page 3 of 17



REFERENCE WELLPATH IDENTIFICATION				
Operator	ANTERO RESOURCES CORPORATION		Slot	Slot #02
Area	Tyler County, WV		Well	Johnston Unit 1H
Field	Tyler		Wellbore	Johnston Unit 1H AWB
Facility	Dale Pad			

WELLPATH DATA (413 stations)																
MD [ft]	Inclination [°]	Azimuth [°]	TVD [ft]	Vert Sect [ft]	North [ft]	East [ft]	Grid East [US ft]	Grid North [US ft]	Latitude	Longitude	Closure Dist [ft]	Closure Dir [°]	DLS ["/100ft]	Build Rate ["/100ft]	Turn Rate ["/100ft]	Comments
800.00	3.930	358.940	799.71	-9.04	9.91	0.87	1679221.18	14319274.96	39°25'55.386"N	80°51'45.263"W	9.95	5.034	0.51	0.44	-3.84	
825.00	4.120	359.050	824.65	-10.71	11.67	0.84	1679221.15	14319276.71	39°25'55.404"N	80°51'45.263"W	11.70	4.130	0.76	0.76	0.44	
850.00	4.320	354.960	849.58	-12.47	13.50	0.74	1679221.05	14319278.55	39°25'55.422"N	80°51'45.264"W	13.52	3.157	1.44	0.80	-16.36	
875.00	4.430	353.020	874.51	-14.32	15.40	0.54	1679220.85	14319280.44	39°25'55.441"N	80°51'45.267"W	15.41	2.026	0.74	0.44	-7.76	
900.00	4.450	351.210	899.43	-16.22	17.32	0.28	1679220.59	14319282.36	39°25'55.459"N	80°51'45.270"W	17.32	0.924	0.57	0.08	-7.24	
925.00	4.660	349.210	924.35	-18.17	19.27	-0.06	1679220.25	14319284.31	39°25'55.479"N	80°51'45.275"W	19.27	359.824	1.05	0.84	-8.00	
950.00	4.350	343.610	949.27	-20.13	21.18	-0.52	1679219.79	14319286.22	39°25'55.498"N	80°51'45.280"W	21.19	358.602	2.15	-1.24	-22.40	
975.00	4.430	339.170	974.20	-22.04	22.99	-1.13	1679219.18	14319288.03	39°25'55.516"N	80°51'45.288"W	23.02	357.192	1.40	0.32	-17.76	
1000.00	4.480	338.310	999.13	-23.98	24.80	-1.83	1679218.48	14319289.84	39°25'55.533"N	80°51'45.297"W	24.87	355.776	0.33	0.20	-3.44	
1025.00	4.650	337.590	1024.05	-25.97	26.64	-2.58	1679217.73	14319291.68	39°25'55.552"N	80°51'45.307"W	26.77	354.471	0.72	0.88	-2.88	
1050.00	4.320	337.040	1048.97	-27.92	28.45	-3.33	1679216.98	14319293.49	39°25'55.570"N	80°51'45.316"W	28.64	353.318	1.33	-1.32	-2.20	
1075.00	4.500	337.340	1073.90	-29.84	30.22	-4.08	1679216.23	14319295.26	39°25'55.587"N	80°51'45.326"W	30.49	352.315	0.73	0.72	1.20	
1100.00	4.570	337.140	1098.82	-31.81	32.04	-4.84	1679215.47	14319297.08	39°25'55.605"N	80°51'45.335"W	32.41	351.406	0.29	0.28	-0.80	
1125.00	4.560	336.940	1123.74	-33.80	33.88	-5.62	1679214.69	14319298.91	39°25'55.623"N	80°51'45.345"W	34.34	350.582	0.08	-0.04	-0.80	
1150.00	4.310	333.190	1148.66	-35.72	35.63	-6.43	1679213.88	14319300.66	39°25'55.641"N	80°51'45.356"W	36.20	349.767	1.53	-1.00	-15.00	
1175.00	4.100	328.610	1173.60	-37.53	37.23	-7.32	1679212.99	14319302.26	39°25'55.656"N	80°51'45.367"W	37.94	348.875	1.58	-0.84	-18.32	
1200.00	4.040	325.360	1198.53	-39.25	38.72	-8.29	1679212.03	14319303.75	39°25'55.671"N	80°51'45.379"W	39.59	347.919	0.95	-0.24	-13.00	
1225.00	4.140	325.900	1223.47	-40.98	40.19	-9.29	1679211.02	14319305.22	39°25'55.686"N	80°51'45.392"W	41.25	346.979	0.43	0.40	2.16	
1250.00	4.040	323.450	1248.41	-42.69	41.64	-10.32	1679209.99	14319306.68	39°25'55.700"N	80°51'45.405"W	42.90	346.076	0.81	-0.40	-9.80	
1275.00	4.030	322.970	1273.34	-44.37	43.05	-11.38	1679208.94	14319308.09	39°25'55.714"N	80°51'45.418"W	44.53	345.197	0.14	-0.04	-1.92	
1300.00	4.130	324.300	1298.28	-46.08	44.48	-12.43	1679207.88	14319309.52	39°25'55.728"N	80°51'45.432"W	46.19	344.386	0.55	0.40	5.32	
1325.00	4.080	323.640	1323.22	-47.79	45.93	-13.48	1679206.83	14319310.96	39°25'55.743"N	80°51'45.445"W	47.87	343.639	0.28	-0.20	-2.64	
1350.00	4.100	324.730	1348.15	-49.51	47.38	-14.53	1679205.79	14319312.41	39°25'55.757"N	80°51'45.458"W	49.56	342.953	0.32	0.08	4.36	
1375.00	4.250	327.170	1373.09	-51.27	48.89	-15.55	1679204.77	14319313.92	39°25'55.772"N	80°51'45.471"W	51.30	342.359	0.93	0.60	9.76	
1400.00	4.170	329.800	1398.02	-53.06	50.45	-16.51	1679203.81	14319315.48	39°25'55.787"N	80°51'45.484"W	53.08	341.884	0.84	-0.32	10.52	
1425.00	4.000	335.010	1422.96	-54.83	52.03	-17.33	1679202.99	14319317.05	39°25'55.803"N	80°51'45.494"W	54.84	341.576	1.63	-0.68	20.84	
1450.00	4.120	338.360	1447.89	-56.59	53.65	-18.03	1679202.29	14319318.68	39°25'55.819"N	80°51'45.503"W	56.60	341.424	1.06	0.48	13.40	
1475.00	4.160	338.190	1472.83	-58.39	55.33	-18.70	1679201.62	14319320.36	39°25'55.835"N	80°51'45.511"W	58.40	341.327	0.17	0.16	-0.68	
1500.00	4.190	337.770	1497.76	-60.21	57.01	-19.38	1679200.94	14319322.04	39°25'55.852"N	80°51'45.520"W	60.22	341.226	0.17	0.12	-1.68	
1525.00	4.250	337.820	1522.69	-62.05	58.72	-20.08	1679200.24	14319323.74	39°25'55.869"N	80°51'45.529"W	62.06	341.124	0.24	0.24	0.20	

RECEIVED  
 Office of Oil and Gas  
 OCT 30 2017  
 WV Department of  
 Environmental Protection



**Actual Wellpath Report**  
 Johnston Unit 1H AWP Proj: 20246  
 Page 4 of 17



Operator	ANTERO RESOURCES CORPORATION
Area	Tyler County, WV
Field	Tyler
Facility	Date Pad
Operator	Slot #02
Area	Johnston Unit 1H
Field	Wellbore
Facility	Johnston Unit 1H AWP

**WELLPATH DATA (413 stations)**

MD	Inclination	Azimuth	TVD	Vert Sect	North	East	Grid East	Grid North	Latitude	Longitude	Closure Dist	Closure Dir	DLS	Build Rate	Turn Rate	Comments
1550.00	4.400	337.910	1547.62	-63.93	60.46	-20.79	1679199.53	14319325.49	39°25'55.886"N	80°51'45.538"W	63.94	341.028	0.60	0.60	0.36	
1575.00	4.480	338.280	1572.55	-65.87	62.26	-21.51	1679198.81	14319327.29	39°25'55.904"N	80°51'45.547"W	65.87	340.942	0.34	0.32	1.48	
1600.00	4.590	337.740	1597.47	-67.84	64.09	-22.25	1679198.07	14319329.12	39°25'55.922"N	80°51'45.557"W	67.84	340.856	0.47	0.44	-2.16	
1625.00	4.590	337.910	1622.39	-69.84	65.95	-23.00	1679197.32	14319330.97	39°25'55.940"N	80°51'45.566"W	69.84	340.770	0.05	0.00	0.68	
1650.00	4.560	337.860	1647.31	-71.84	67.80	-23.76	1679196.56	14319332.82	39°25'55.959"N	80°51'45.576"W	71.84	340.689	0.04	-0.04	-0.20	
1675.00	4.380	335.490	1672.23	-73.79	69.59	-24.53	1679195.79	14319334.61	39°25'55.977"N	80°51'45.585"W	73.79	340.584	1.09	-0.80	-9.48	
1700.00	4.220	331.730	1697.16	-75.65	71.27	-25.36	1679194.96	14319336.29	39°25'55.993"N	80°51'45.596"W	75.65	340.412	1.30	-0.64	-15.04	
1725.00	4.060	331.840	1722.10	-77.43	72.86	-26.21	1679194.11	14319337.88	39°25'56.009"N	80°51'45.607"W	77.43	340.212	0.64	-0.64	0.44	
1750.00	3.980	332.370	1747.04	-79.17	74.41	-27.03	1679193.29	14319339.43	39°25'56.024"N	80°51'45.617"W	79.17	340.033	0.35	-0.32	2.12	
1775.00	3.420	335.740	1771.98	-80.77	75.86	-27.74	1679192.58	14319340.88	39°25'56.038"N	80°51'45.626"W	80.77	339.912	2.40	-2.24	13.48	
1800.00	3.320	340.920	1796.94	-82.23	77.22	-28.29	1679192.04	14319342.24	39°25'56.052"N	80°51'45.633"W	82.24	339.883	1.28	-0.40	20.72	
1825.00	3.000	341.620	1821.90	-83.61	78.53	-28.73	1679191.59	14319343.54	39°25'56.065"N	80°51'45.639"W	83.62	339.905	1.29	-1.28	2.80	
1850.00	2.850	343.620	1846.87	-84.89	79.74	-29.11	1679191.21	14319344.76	39°25'56.077"N	80°51'45.644"W	84.89	339.946	0.73	-0.60	8.00	
1875.00	2.810	344.830	1871.84	-86.12	80.93	-29.45	1679190.88	14319345.95	39°25'56.089"N	80°51'45.648"W	86.12	340.007	0.29	-0.16	4.84	
1900.00	2.730	347.000	1896.81	-87.32	82.10	-29.74	1679190.58	14319347.12	39°25'56.100"N	80°51'45.652"W	87.32	340.088	0.53	-0.32	8.68	
1925.00	2.880	347.930	1921.78	-88.54	83.30	-30.01	1679190.32	14319348.31	39°25'56.112"N	80°51'45.655"W	88.54	340.190	0.63	0.60	3.72	
1950.00	2.990	348.360	1946.75	-89.80	84.55	-30.27	1679190.05	14319349.57	39°25'56.124"N	80°51'45.658"W	89.80	340.303	0.45	0.44	1.72	
1975.00	3.050	348.150	1971.71	-91.10	85.84	-30.51	1679189.81	14319350.86	39°25'56.137"N	80°51'45.661"W	91.10	340.431	0.43	0.24	6.80	
2000.00	3.220	348.150	1996.68	-92.46	87.19	-30.77	1679189.55	14319352.20	39°25'56.151"N	80°51'45.665"W	92.46	340.559	0.80	0.68	-7.64	
2025.00	3.330	347.250	2021.63	-93.87	88.58	-31.08	1679189.24	14319353.60	39°25'56.164"N	80°51'45.669"W	93.87	340.667	0.49	0.44	-3.60	
2050.00	3.500	348.050	2046.59	-95.35	90.04	-31.40	1679188.93	14319355.05	39°25'56.179"N	80°51'45.673"W	95.35	340.776	0.71	0.68	3.20	
2075.00	3.630	348.720	2071.54	-96.89	91.55	-31.74	1679188.59	14319356.57	39°25'56.194"N	80°51'45.677"W	96.90	340.882	0.62	0.52	-5.32	
2100.00	3.650	348.420	2096.49	-98.47	93.10	-32.10	1679188.22	14319358.11	39°25'56.209"N	80°51'45.682"W	98.48	340.973	0.11	0.08	-1.20	
2125.00	3.770	345.000	2121.44	-100.08	94.66	-32.50	1679187.82	14319359.68	39°25'56.224"N	80°51'45.687"W	100.08	341.049	0.60	0.48	-5.68	
2150.00	3.850	345.190	2146.38	-101.74	96.27	-32.93	1679187.39	14319361.28	39°25'56.240"N	80°51'45.692"W	101.75	341.115	0.32	0.32	0.76	
2175.00	3.790	344.750	2171.33	-103.40	97.88	-33.36	1679186.96	14319362.89	39°25'56.256"N	80°51'45.698"W	103.41	341.177	0.27	-0.24	-1.76	
2200.00	3.580	345.020	2196.28	-105.00	99.43	-33.78	1679186.54	14319364.44	39°25'56.272"N	80°51'45.703"W	105.01	341.234	0.84	-0.84	1.08	
2225.00	2.600	338.460	2221.24	-106.34	100.71	-34.19	1679186.13	14319365.72	39°25'56.284"N	80°51'45.708"W	106.36	341.247	4.16	-3.92	-26.24	
2250.00	1.780	333.130	2246.22	-107.30	101.58	-34.58	1679185.75	14319366.59	39°25'56.293"N	80°51'45.713"W	107.31	341.203	3.38	-3.28	-21.32	
2275.00	1.810	327.150	2271.21	-108.02	102.22	-34.94	1679185.38	14319367.23	39°25'56.299"N	80°51'45.718"W	108.03	341.129	0.98	-0.68	-23.92	

RECEIVED  
 Office of Oil and Gas  
 OCT 30 2017  
 WV Department of  
 Environmental Protection



## Actual Wellpath Report

Johnston Unit 1H AWP Proj: 20246  
Page 5 of 17



### REFERENCE WELLPATH IDENTIFICATION

Operator	ANTERO RESOURCES CORPORATION	Slot	Slot #02
Area	Tyler County, WV	Well	Johnston Unit 1H
Field	Tyler	Wellbore	Johnston Unit 1H AWP
Facility	Date Pad		

MD (ft)	Inclination (°)	Azimuth (°)	TVD (ft)	Vert Sect (ft)	North (ft)	East (ft)	Grid East (ft)	Grid North (ft)	Latitude	Longitude	Closure Dist (ft)	Closure Dir (°)	DLS (ft/100ft)	Build Rate (ft/100ft)	Turn Rate (ft/100ft)	Comments
2300.00	1.450	323.550	2296.20	-108.67	102.77	-35.32	1679185.00	14319367.78	39°25'56.305"N	80°51'45.722"W	108.67	341.034	0.75	-0.64	-14.40	
2325.00	1.250	313.790	2321.19	-109.21	103.22	-35.70	1679184.62	14319368.23	39°25'56.309"N	80°51'45.727"W	109.22	340.918	1.22	-0.80	-39.04	
2350.00	1.210	306.460	2346.19	-109.68	103.66	-36.11	1679184.21	14319368.57	39°25'56.312"N	80°51'45.732"W	109.68	340.776	0.65	-0.16	-29.32	
2375.00	1.190	301.190	2371.18	-110.10	103.85	-36.55	1679183.78	14319368.86	39°25'56.315"N	80°51'45.738"W	110.10	340.612	0.45	-0.08	-21.08	
2400.00	1.330	292.480	2396.18	-110.49	104.10	-37.04	1679183.29	14319369.11	39°25'56.318"N	80°51'45.744"W	110.49	340.414	0.95	0.56	-34.84	
2425.00	1.360	272.650	2421.17	-110.80	104.22	-37.60	1679182.72	14319369.23	39°25'56.319"N	80°51'45.751"W	110.80	340.161	1.86	0.12	-79.32	
2450.00	1.480	270.060	2446.16	-111.02	104.24	-38.22	1679182.10	14319369.25	39°25'56.319"N	80°51'45.759"W	111.03	339.863	0.54	0.48	-10.36	
2475.00	1.660	267.770	2471.15	-111.24	104.22	-38.91	1679181.42	14319369.23	39°25'56.319"N	80°51'45.768"W	111.25	339.529	0.76	0.72	-9.16	
2500.00	1.630	273.350	2496.14	-111.48	104.23	-39.62	1679180.70	14319369.24	39°25'56.319"N	80°51'45.777"W	111.51	339.186	0.66	-0.12	22.32	
2525.00	1.560	265.990	2521.13	-111.71	104.23	-40.32	1679180.01	14319369.24	39°25'56.319"N	80°51'45.786"W	111.75	338.852	0.87	-0.28	-29.44	
2550.00	1.570	268.940	2546.12	-111.91	104.20	-41.00	1679179.33	14319369.21	39°25'56.319"N	80°51'45.795"W	111.97	338.521	0.32	0.04	11.80	
2575.00	1.360	272.610	2571.12	-112.14	104.21	-41.64	1679178.69	14319369.21	39°25'56.319"N	80°51'45.803"W	112.22	338.219	0.92	-0.84	14.68	
2600.00	0.540	294.270	2596.11	-112.33	104.27	-42.04	1679178.28	14319369.28	39°25'56.320"N	80°51'45.808"W	112.42	338.040	3.52	-3.28	86.64	
2625.00	0.500	303.040	2621.11	-112.50	104.38	-42.24	1679178.09	14319369.38	39°25'56.321"N	80°51'45.811"W	112.60	337.966	0.36	-0.16	35.08	
2650.00	0.540	304.320	2646.11	-112.68	104.50	-42.43	1679177.90	14319369.51	39°25'56.322"N	80°51'45.813"W	112.79	337.902	0.17	0.16	5.12	
2675.00	0.590	305.400	2671.11	-112.88	104.64	-42.63	1679177.69	14319369.65	39°25'56.323"N	80°51'45.816"W	112.99	337.833	0.20	0.20	4.32	
2700.00	0.540	302.190	2696.11	-113.08	104.78	-42.84	1679177.49	14319369.79	39°25'56.325"N	80°51'45.818"W	113.20	337.764	0.24	-0.20	-12.84	
2725.00	0.490	302.840	2721.11	-113.26	104.90	-43.03	1679177.30	14319369.91	39°25'56.326"N	80°51'45.821"W	113.38	337.698	0.20	-0.20	2.60	
2750.00	0.520	286.210	2746.11	-113.41	104.99	-43.23	1679177.10	14319370.00	39°25'56.327"N	80°51'45.823"W	113.54	337.623	0.60	0.12	-66.52	
2775.00	0.490	299.740	2771.10	-113.55	105.07	-43.43	1679176.90	14319370.08	39°25'56.328"N	80°51'45.826"W	113.70	337.545	0.49	-0.12	54.12	
2800.00	0.360	290.000	2796.10	-113.69	105.15	-43.59	1679176.73	14319370.16	39°25'56.328"N	80°51'45.828"W	113.83	337.483	0.59	-0.52	-38.96	
2825.00	0.330	310.980	2821.10	-113.80	105.23	-43.72	1679176.61	14319370.24	39°25'56.329"N	80°51'45.829"W	113.95	337.437	0.52	-0.12	83.92	
2850.00	0.430	305.290	2846.10	-113.94	105.33	-43.85	1679176.47	14319370.34	39°25'56.330"N	80°51'45.831"W	114.09	337.396	0.43	0.40	-22.76	
2875.00	0.550	307.780	2871.10	-114.12	105.46	-44.02	1679176.30	14319370.47	39°25'56.331"N	80°51'45.833"W	114.28	337.341	0.49	0.48	9.96	
2900.00	0.670	294.430	2896.10	-114.32	105.59	-44.25	1679176.08	14319370.60	39°25'56.333"N	80°51'45.836"W	114.49	337.262	0.74	0.48	-63.40	
2925.00	0.730	309.950	2921.10	-114.56	105.75	-44.51	1679175.82	14319370.76	39°25'56.334"N	80°51'45.839"W	114.74	337.176	0.79	0.24	62.08	
2950.00	0.710	307.870	2946.10	-114.82	105.95	-44.75	1679175.58	14319370.96	39°25'56.336"N	80°51'45.843"W	115.02	337.102	0.13	-0.08	-8.32	
2975.00	0.710	301.690	2971.10	-115.08	106.13	-45.01	1679175.32	14319371.14	39°25'56.338"N	80°51'45.846"W	115.28	337.020	0.31	0.00	-24.72	
3000.00	0.780	301.330	2996.09	-115.33	106.30	-45.28	1679175.05	14319371.31	39°25'56.340"N	80°51'45.849"W	115.54	336.926	0.28	0.28	-1.44	
3025.00	0.710	301.300	3021.09	-115.58	106.47	-45.56	1679174.77	14319371.47	39°25'56.341"N	80°51'45.853"W	115.81	336.832	0.28	-0.28	-0.12	

RECEIVED  
Office of Oil and Gas  
OCT 30 2017  
WV Department of  
Environmental Protection



### Actual Wellpath Report

Johnston Unit 1H AWP Proj: 20246

Page 6 of 17



REFERENCE WELLPATH IDENTIFICATION			
Operator	ANTERO RESOURCES CORPORATION	Slot	Slot #02
Area	Tyler County, WV	Well	Johnston Unit 1H
Field	Tyler	Wellbore	Johnston Unit 1H AWB
Facility	Date Pad		

WELLPATH DATA (413 stations)												
MD	Inclination	Azimuth	TVD	Vert Sect	North	East	Grid East	Grid North	Latitude	Longitude	Closure Dist	Closure Dir
[m]	[°]	[°]	[m]	[m]	[m]	[m]	[m]	[m]	[m]	[m]	[m]	[°]
3050.00	0.790	306.880	3046.09	-115.85	106.65	-45.83	1679174.50	14319371.86	39°25'56.343"N	80°51'45.856"W	116.08	336.747
3075.00	0.970	297.460	3071.09	-116.15	106.86	-46.15	1679174.18	14319371.86	39°25'56.345"N	80°51'45.860"W	116.40	336.640
3100.00	0.710	302.840	3096.08	-116.42	107.04	-46.47	1679173.86	14319372.05	39°25'56.347"N	80°51'45.864"W	116.69	336.532
3125.00	0.860	297.540	3121.08	-116.69	107.21	-46.77	1679173.56	14319372.22	39°25'56.349"N	80°51'45.868"W	116.97	336.432
3150.00	0.850	298.460	3146.08	-116.96	107.38	-47.10	1679173.23	14319372.39	39°25'56.350"N	80°51'45.872"W	117.26	336.319
3175.00	0.820	300.460	3171.08	-117.24	107.56	-47.41	1679172.92	14319372.57	39°25'56.352"N	80°51'45.876"W	117.55	336.212
3200.00	0.830	302.500	3196.07	-117.52	107.75	-47.72	1679172.61	14319372.76	39°25'56.354"N	80°51'45.880"W	117.85	336.112
3225.00	0.870	303.880	3221.07	-117.78	107.92	-48.05	1679172.28	14319372.93	39°25'56.356"N	80°51'45.885"W	118.13	335.999
3250.00	0.940	302.880	3246.07	-118.07	108.10	-48.40	1679171.93	14319373.11	39°25'56.358"N	80°51'45.889"W	118.44	335.882
3275.00	0.970	300.730	3271.06	-118.40	108.32	-48.75	1679171.58	14319373.33	39°25'56.360"N	80°51'45.893"W	118.79	335.771
3300.00	0.880	300.130	3296.06	-118.71	108.53	-49.10	1679171.23	14319373.54	39°25'56.362"N	80°51'45.898"W	119.12	335.659
3325.00	0.920	291.520	3321.06	-118.99	108.70	-49.45	1679170.88	14319373.71	39°25'56.363"N	80°51'45.902"W	119.42	335.538
3350.00	0.920	288.310	3346.05	-119.24	108.84	-49.83	1679170.50	14319373.84	39°25'56.365"N	80°51'45.907"W	119.70	335.401
3375.00	1.040	282.300	3371.05	-119.49	108.95	-50.24	1679170.09	14319373.95	39°25'56.366"N	80°51'45.912"W	119.97	335.244
3400.00	1.800	269.210	3396.04	-119.73	108.99	-50.85	1679169.48	14319374.00	39°25'56.366"N	80°51'45.920"W	120.27	334.987
3425.00	1.960	268.270	3421.03	-119.99	108.97	-51.67	1679168.66	14319373.98	39°25'56.366"N	80°51'45.931"W	120.60	334.630
3450.00	2.060	269.940	3446.01	-120.27	108.96	-52.55	1679167.78	14319373.97	39°25'56.366"N	80°51'45.942"W	120.97	334.252
3475.00	2.050	262.710	3471.00	-120.52	108.90	-53.44	1679166.89	14319373.91	39°25'56.365"N	80°51'45.953"W	121.31	333.861
3500.00	2.180	265.250	3495.98	-120.74	108.81	-54.36	1679165.97	14319373.81	39°25'56.365"N	80°51'45.965"W	121.63	333.453
3525.00	2.070	262.540	3520.96	-120.95	108.71	-55.28	1679165.05	14319373.71	39°25'56.364"N	80°51'45.977"W	121.96	333.045
3550.00	2.090	265.470	3545.95	-121.17	108.61	-56.18	1679164.15	14319373.62	39°25'56.363"N	80°51'45.988"W	122.28	332.648
3575.00	2.760	266.090	3570.92	-121.45	108.54	-57.24	1679163.09	14319373.54	39°25'56.362"N	80°51'46.002"W	122.70	332.194
3600.00	3.540	261.430	3595.89	-121.76	108.38	-58.60	1679161.73	14319373.39	39°25'56.360"N	80°51'46.019"W	123.21	331.599
3625.00	3.690	260.810	3620.84	-122.05	108.14	-60.16	1679160.17	14319373.14	39°25'56.358"N	80°51'46.039"W	123.74	330.911
3650.00	3.930	261.630	3645.78	-122.36	107.88	-61.80	1679158.53	14319372.89	39°25'56.356"N	80°51'46.060"W	124.33	330.193
3675.00	5.750	267.420	3670.69	-122.90	107.70	-63.90	1679156.44	14319372.71	39°25'56.354"N	80°51'46.087"W	125.23	329.319
3700.00	6.660	268.530	3695.54	-123.71	107.61	-66.60	1679155.74	14319372.54	39°25'56.352"N	80°51'46.121"W	126.55	328.246
3725.00	7.140	268.700	3720.36	-124.65	107.54	-69.60	1679150.73	14319372.54	39°25'56.352"N	80°51'46.159"W	128.10	327.087
3750.00	7.880	268.150	3745.15	-125.66	107.45	-72.87	1679147.47	14319372.45	39°25'56.351"N	80°51'46.201"W	129.82	325.855
3775.00	9.290	266.910	3769.87	-126.76	107.28	-76.60	1679143.74	14319372.29	39°25'56.350"N	80°51'46.248"W	131.82	324.474

Comments

RECEIVED  
Office of Oil and Gas  
OCT 30 2017  
WV Department of Environmental Protection



**Actual Wellpath Report**  
 Johnston Unit 1H AWP Proj: 20246  
 Page 7 of 17



**REFERENCE WELLPATH IDENTIFICATION**

Operator	ANTERO RESOURCES CORPORATION	Slot	Slot #02
Area	Tyler County, WV	Well	Johnston Unit 1H
Field	Tyler	Wellbore	Johnston Unit 1H AWB
Facility	Date Pad		

**WELLPATH DATA (413 stations)**

MD	Inclination	Azimuth	TVD	Vert Sect	North	East	Grid East	Grid North	Latitude	Longitude	Closure Dist	Closure Dir	DLS	Build Rate	Turn Rate	Comments
(ft)	(°)	(°)	(ft)	(ft)	(ft)	(ft)	(US ft)	(US ft)			(ft)	(ft)	(ft/100ft)	(ft/100ft)	(ft/100ft)	
3800.00	9.696	266.630	3794.53	-127.92	107.05	-80.71	1679139.63	14319372.06	39°25'56.348"N	80°51'46.301"W	134.07	322.984	1.61	1.60	-1.12	
3825.00	9.870	266.270	3819.16	-129.10	106.79	-84.95	1679135.39	14319371.79	39°25'56.345"N	80°51'46.355"W	136.45	321.497	0.76	1.72	-1.44	
3850.00	10.600	265.210	3843.76	-130.27	106.45	-89.38	1679130.97	14319371.46	39°25'56.342"N	80°51'46.411"W	139.00	319.983	3.02	2.92	-4.24	
3875.00	10.800	264.040	3868.33	-131.41	106.02	-94.00	1679126.35	14319371.03	39°25'56.338"N	80°51'46.470"W	141.69	318.438	1.18	0.80	-4.68	
3900.00	11.130	264.930	3892.87	-132.57	105.56	-98.73	1679121.61	14319370.57	39°25'56.333"N	80°51'46.531"W	144.54	316.914	1.48	1.32	-3.56	
3925.00	11.360	264.010	3917.39	-133.75	105.09	-103.59	1679116.76	14319370.10	39°25'56.329"N	80°51'46.592"W	147.56	315.413	1.17	0.92	-3.68	
3950.00	12.780	266.090	3941.84	-135.08	104.65	-108.79	1679111.56	14319369.65	39°25'56.324"N	80°51'46.659"W	150.95	313.887	5.94	5.68	8.32	
3975.00	13.160	266.720	3966.20	-136.63	104.30	-114.39	1679105.96	14319369.30	39°25'56.321"N	80°51'46.730"W	154.80	312.356	1.62	1.52	2.56	
4000.00	13.320	267.220	3990.54	-138.26	103.99	-120.11	1679100.25	14319369.00	39°25'56.318"N	80°51'46.803"W	158.88	310.886	0.78	0.64	1.96	
4025.00	13.880	268.720	4014.84	-140.04	103.79	-125.99	1679094.37	14319368.80	39°25'56.316"N	80°51'46.878"W	163.23	309.482	2.65	2.24	6.00	
4050.00	14.540	269.540	4039.07	-142.01	103.70	-132.12	1679088.24	14319368.70	39°25'56.315"N	80°51'46.956"W	167.96	308.126	2.76	2.64	3.28	
4075.00	14.710	269.480	4063.26	-144.07	103.64	-138.43	1679081.93	14319368.65	39°25'56.315"N	80°51'47.036"W	172.93	306.821	0.68	0.68	-0.24	
4100.00	14.780	269.940	4087.44	-146.18	103.61	-144.80	1679075.57	14319368.62	39°25'56.315"N	80°51'47.118"W	178.05	305.585	0.55	0.28	1.84	
4125.00	15.640	267.300	4111.56	-148.22	103.45	-151.35	1679069.02	14319368.46	39°25'56.313"N	80°51'47.201"W	183.33	304.352	4.42	3.44	-10.56	
4150.00	15.910	266.390	4135.82	-150.15	103.07	-158.14	1679062.23	14319368.08	39°25'56.309"N	80°51'47.288"W	188.76	303.096	1.46	1.08	-3.64	
4175.00	16.070	266.310	4159.65	-152.04	102.63	-165.01	1679055.36	14319367.64	39°25'56.305"N	80°51'47.375"W	194.33	301.881	0.65	0.64	-0.32	
4200.00	16.740	266.530	4183.64	-153.99	102.19	-172.06	1679048.32	14319367.20	39°25'56.301"N	80°51'47.465"W	200.12	300.708	2.69	2.68	0.88	
4225.00	18.220	266.900	4207.48	-156.10	101.76	-179.56	1679040.83	14319366.77	39°25'56.297"N	80°51'47.561"W	206.39	299.543	5.94	5.92	1.48	
4250.00	19.630	267.660	4231.13	-158.46	101.38	-187.65	1679032.73	14319366.39	39°25'56.293"N	80°51'47.664"W	213.29	298.380	5.73	5.64	3.04	
4275.00	20.630	268.670	4254.60	-161.08	101.11	-196.25	1679024.14	14319366.12	39°25'56.291"N	80°51'47.773"W	220.77	297.257	4.23	4.00	4.04	
4300.00	22.260	269.570	4277.87	-164.02	100.97	-205.39	1679015.00	14319365.98	39°25'56.289"N	80°51'47.890"W	228.87	296.179	6.65	6.52	3.60	
4325.00	23.270	270.190	4300.92	-167.25	100.95	-215.07	1679005.33	14319365.96	39°25'56.289"N	80°51'48.013"W	237.68	295.145	4.15	4.04	2.48	
4350.00	23.540	269.760	4323.87	-170.57	100.95	-225.00	1678995.40	14319365.96	39°25'56.289"N	80°51'48.140"W	246.60	294.164	1.28	1.08	-1.72	
4375.00	23.710	269.920	4346.77	-173.91	100.92	-235.01	1678985.39	14319365.93	39°25'56.289"N	80°51'48.267"W	255.77	293.239	0.73	0.68	0.64	
4400.00	24.920	269.520	4369.55	-177.31	100.87	-245.31	1678975.10	14319365.88	39°25'56.289"N	80°51'48.399"W	265.24	292.352	4.88	4.84	-1.60	
4425.00	25.760	268.520	4392.15	-180.73	100.68	-256.01	1678964.41	14319365.69	39°25'56.287"N	80°51'48.535"W	275.09	291.469	3.77	3.36	-4.00	
4450.00	26.900	268.510	4414.65	-184.11	100.40	-266.89	1678953.52	14319365.41	39°25'56.285"N	80°51'48.674"W	285.15	290.615	0.56	0.56	-0.04	
4475.00	26.580	268.240	4437.07	-187.52	100.09	-277.94	1678942.48	14319365.10	39°25'56.282"N	80°51'48.815"W	295.41	289.804	2.76	2.72	-1.08	
4500.00	27.830	267.580	4459.31	-190.96	99.67	-289.36	1678931.06	14319364.68	39°25'56.278"N	80°51'48.960"W	306.05	289.006	5.14	5.00	-2.64	
4525.00	28.310	267.110	4481.37	-194.39	99.12	-301.12	1678919.31	14319364.13	39°25'56.273"N	80°51'49.110"W	317.01	288.221	2.11	1.92	-1.88	

RECEIVED  
 Office of Oil and Gas  
 OCT 30 2017  
 WV Department of  
 Environmental Protection





# Actual Wellpath Report

Johnston Unit 1H AWP Proj: 20246'  
Page 8 of 17



## REFERENCE WELLPATH IDENTIFICATION

Operator	ANTERO RESOURCES CORPORATION	Slot	Slot #02
Area	Tyler County, WV	Well	Johnston Unit 1H
Field	Tyler	Wellbore	Johnston Unit 1H AWB
Facility	Date Pad		

## WELLPATH DATA (413 stations)

MD (ft)	Inclination (°)	Azimuth (°)	TVD (ft)	Vert Sect (ft)	North (ft)	East (ft)	Grid East (ft)	Grid North (ft)	Latitude	Longitude	Closure Dist (ft)	Closure Dir (°)	DLS (ft/100ft)	Build Rate (ft/100ft)	Turn Rate (ft/100ft)	Comments
4550.00	29.080	266.730	4503.30	-197.80	98.48	-313.10	1678807.33	14319363.49	39°25'56.286"N	80°51'49.263"W	328.22	287.450	3.17	3.08	-1.52	
4575.00	30.400	266.120	4525.00	-201.22	97.70	-325.48	1678894.95	14319362.71	39°25'56.259"N	80°51'49.420"W	339.83	286.709	5.42	5.28	-2.44	
4600.00	30.870	265.490	4546.51	-204.61	96.77	-338.18	1678882.26	14319361.78	39°25'56.250"N	80°51'49.582"W	351.76	285.988	2.28	1.88	-2.52	
4625.00	31.040	264.700	4567.95	-207.87	95.67	-351.00	1678869.46	14319360.68	39°25'56.239"N	80°51'49.746"W	363.80	285.247	1.76	0.68	-3.16	
4650.00	31.640	264.760	4589.30	-211.09	94.48	-363.94	1678856.51	14319359.49	39°25'56.228"N	80°51'49.911"W	376.01	284.552	2.40	2.40	-0.24	
4675.00	31.050	264.100	4610.66	-214.24	93.22	-376.89	1678843.57	14319358.23	39°25'56.215"N	80°51'50.076"W	388.24	283.892	2.73	-2.39	-2.64	
4700.00	31.130	264.600	4632.06	-217.35	91.94	-389.73	1678830.73	14319356.96	39°25'56.203"N	80°51'50.239"W	400.43	283.274	1.08	0.32	2.00	
4725.00	31.440	265.290	4653.43	-220.61	90.80	-402.66	1678817.81	14319355.84	39°25'56.192"N	80°51'50.404"W	412.78	282.708	1.90	1.24	2.76	
4750.00	31.620	266.160	4674.74	-224.07	89.83	-415.70	1678804.77	14319354.84	39°25'56.182"N	80°51'50.570"W	425.30	282.193	1.95	1.02	3.48	
4775.00	31.740	266.420	4696.01	-227.66	88.98	-428.80	1678791.68	14319353.99	39°25'56.174"N	80°51'50.737"W	437.94	281.723	0.73	0.48	1.04	
4800.00	31.880	266.460	4717.25	-231.31	88.16	-441.96	1678778.53	14319353.17	39°25'56.166"N	80°51'50.905"W	450.66	281.281	0.57	0.56	0.16	
4825.00	31.660	267.200	4738.51	-235.03	87.43	-455.10	1678765.39	14319352.45	39°25'56.159"N	80°51'51.072"W	463.42	280.875	1.79	-0.88	2.96	
4850.00	30.800	268.360	4759.89	-238.90	86.93	-468.05	1678752.45	14319351.94	39°25'56.154"N	80°51'51.238"W	476.05	280.521	4.20	-3.44	4.64	
4875.00	30.070	268.950	4781.45	-242.86	86.63	-480.71	1678739.79	14319351.64	39°25'56.152"N	80°51'51.399"W	488.45	280.216	3.16	-2.92	2.36	
4900.00	30.470	269.640	4803.04	-246.84	86.36	-493.31	1678727.20	14319351.38	39°25'56.149"N	80°51'51.559"W	500.81	279.930	1.72	1.60	-1.24	
4925.00	31.160	268.540	4824.51	-250.84	86.05	-506.11	1678714.40	14319351.06	39°25'56.146"N	80°51'51.723"W	513.37	279.649	2.77	2.76	-0.40	
4950.00	31.970	268.420	4845.81	-254.90	85.70	-519.19	1678701.32	14319350.72	39°25'56.143"N	80°51'51.889"W	526.22	279.373	3.25	3.24	-0.48	
4975.00	32.580	268.060	4866.95	-258.99	85.29	-532.54	1678687.99	14319350.31	39°25'56.139"N	80°51'52.059"W	539.32	279.099	2.56	2.44	-1.44	
5000.00	33.190	267.870	4887.94	-263.09	84.81	-546.10	1678674.43	14319349.82	39°25'56.135"N	80°51'52.232"W	552.65	278.827	2.47	2.44	-0.76	
5025.00	33.330	267.940	4908.84	-267.21	84.31	-559.80	1678660.73	14319349.32	39°25'56.130"N	80°51'52.407"W	566.12	278.564	0.58	0.56	0.28	
5050.00	33.220	267.620	4929.75	-271.31	83.78	-573.51	1678647.03	14319348.79	39°25'56.125"N	80°51'52.582"W	579.60	278.311	0.83	-0.44	-1.28	
5075.00	32.970	267.170	4950.69	-275.30	83.16	-587.15	1678633.40	14319348.17	39°25'56.119"N	80°51'52.755"W	593.01	278.061	1.40	-1.00	-1.80	
5100.00	32.340	266.870	4971.74	-279.16	82.45	-600.62	1678619.93	14319347.47	39°25'56.112"N	80°51'52.927"W	606.25	277.817	2.60	-2.52	-1.20	
5125.00	31.730	266.970	4992.93	-282.93	81.74	-613.86	1678606.70	14319346.76	39°25'56.105"N	80°51'53.096"W	619.28	277.585	2.45	-2.44	0.40	
5150.00	31.760	267.380	5014.19	-286.72	81.09	-627.00	1678593.56	14319346.11	39°25'56.099"N	80°51'53.263"W	632.22	277.370	0.87	0.12	1.64	
5175.00	31.510	268.300	5035.48	-290.65	80.60	-640.10	1678580.47	14319345.62	39°25'56.095"N	80°51'53.430"W	645.15	277.177	2.17	-1.00	3.68	
5200.00	31.400	269.460	5056.80	-294.79	80.34	-653.14	1678567.43	14319345.36	39°25'56.092"N	80°51'53.597"W	658.07	277.013	2.46	-0.44	4.64	
5225.00	30.850	270.270	5078.20	-299.09	80.31	-666.06	1678554.51	14319345.33	39°25'56.092"N	80°51'53.761"W	670.89	276.875	2.76	-2.20	3.24	
5250.00	30.380	270.370	5099.72	-303.43	80.38	-678.80	1678541.79	14319345.40	39°25'56.093"N	80°51'53.924"W	683.54	276.754	1.89	-1.88	0.40	
5275.00	29.800	270.350	5121.35	-307.71	80.46	-691.33	1678529.26	14319345.48	39°25'56.094"N	80°51'54.083"W	696.00	276.639	2.32	-2.92	-0.08	

RECEIVED  
Office of Oil and Gas  
OCT 30 2017  
WV Department of  
Environmental Protection



**Actual Wellpath Report**  
 Johnston Unit 1H AWP Proj: 20246  
 Page 9 of 17



**REFERENCE WELLPATH IDENTIFICATION**

Operator	ANTERO RESOURCES CORPORATION	Slot	Slot #02
Area	Tyler County, WV	Well	Johnston Unit 1H AWP
Field	Tyler	Wellbore	Johnston Unit 1H AWP
Facility	Date Pad		

**WELLPATH DATA (413 stations)**

MD (m)	Inclination (°)	Azimuth (°)	TVD (m)	Vert North (m)	East (m)	Grid East (m)	Grid North (m)	Latitude	Longitude	Closure (m)	Dir (°)	DLS (m)	Build Rate (1/100ft)	Turn Rate (1/100ft)	Comments
5300.00	29.1602	0.5405	5143.11	1311.92	80.56	-703.63	1678516.96	14319345.58	89°25'56.095"N	80°51'54.240"W	708.23	276.531	2.59	-2.56	0.76
5325.00	28.4602	0.6705	5165.02	1316.09	80.69	-715.68	1678504.92	14319345.70	89°25'56.096"N	80°51'54.394"W	720.21	276.432	2.81	-2.80	0.52
5350.00	28.2002	0.6605	5187.02	1320.20	80.82	-727.54	1678493.06	14319345.84	89°25'56.098"N	80°51'54.545"W	732.02	276.339	1.04	-1.04	-0.04
5375.00	28.7402	0.6971	5209.00	1324.23	80.86	-739.46	1678481.15	14319345.88	89°25'56.099"N	80°51'54.697"W	743.87	276.241	2.82	-3.80	-0.04
5400.00	29.0202	0.6870	5230.89	1328.12	80.89	-751.53	1678469.08	14319345.71	89°25'56.097"N	80°51'54.850"W	756.85	276.128	2.25	-4.04	-0.04
5425.00	29.3202	0.6818	5252.72	1331.89	80.96	-763.71	1678456.90	14319345.38	89°25'56.094"N	80°51'55.006"W	767.93	276.007	1.57	-2.08	-0.08
5450.00	29.6502	0.6749	5274.48	1335.69	80.90	-776.01	1678444.61	14319344.82	89°25'56.090"N	80°51'55.162"W	780.11	275.879	1.81	-2.52	-0.20
5475.00	29.8102	0.6750	5296.19	1339.24	79.37	-788.39	1678432.23	14319344.38	89°25'56.085"N	80°51'55.320"W	792.38	275.749	0.65	-0.64	-0.20
5500.00	29.3202	0.6700	5317.00	1342.88	78.85	-800.72	1678419.91	14319343.87	89°25'56.080"N	80°51'55.477"W	804.59	275.624	2.00	-1.96	0.80
5525.00	28.9702	0.6614	5339.77	1346.56	78.41	-812.89	1678407.75	14319343.43	89°25'56.075"N	80°51'55.632"W	816.66	275.509	1.64	-1.40	1.76
5550.00	28.5002	0.6617	5361.69	1350.31	78.12	-824.90	1678395.74	14319343.14	89°25'56.073"N	80°51'55.786"W	828.59	275.410	2.73	-1.88	4.12
5575.00	28.2802	0.6610	5383.69	1354.13	77.95	-836.79	1678383.86	14319342.86	89°25'56.071"N	80°51'55.937"W	840.41	275.322	0.88	-0.88	-0.28
5600.00	27.8702	0.6650	5405.75	1357.98	77.84	-848.55	1678372.10	14319342.86	89°25'56.070"N	80°51'56.087"W	852.11	275.241	2.16	-1.64	3.00
5625.00	27.8402	0.6640	5427.85	1361.86	77.81	-860.23	1678360.42	14319342.82	89°25'56.070"N	80°51'56.236"W	863.74	275.168	0.12	-0.12	-0.04
5650.00	27.7002	0.6670	5449.97	1365.73	77.76	-871.88	1678348.78	14319342.78	89°25'56.070"N	80°51'56.384"W	875.34	275.096	0.62	-0.56	-0.56
5675.00	27.0202	0.6680	5472.17	1369.54	77.71	-883.37	1678337.29	14319342.73	89°25'56.070"N	80°51'56.531"W	886.78	275.028	2.73	-2.72	0.60
5700.00	26.5202	0.6600	5494.49	1373.26	77.66	-894.63	1678326.04	14319342.68	89°25'56.069"N	80°51'56.674"W	897.99	274.961	2.05	-2.00	-1.00
5725.00	26.5302	0.6600	5516.86	1376.81	77.45	-905.79	1678314.88	14319342.47	89°25'56.067"N	80°51'56.816"W	909.10	274.887	2.39	-5.36	-1.00
5750.00	26.5202	0.6550	5539.23	1380.17	77.04	-916.95	1678303.73	14319342.06	89°25'56.063"N	80°51'56.959"W	920.18	274.803	1.27	-0.04	-2.84
5775.00	26.2602	0.6540	5561.63	1383.44	76.56	-928.05	1678292.63	14319341.57	89°25'56.059"N	80°51'57.100"W	931.20	274.716	1.07	-1.04	-0.52
5800.00	25.8602	0.6584	5584.08	1386.56	75.97	-939.02	1678281.67	14319340.99	89°25'56.053"N	80°51'57.240"W	942.09	274.625	2.35	-1.60	-3.92
5825.00	25.4202	0.6580	5606.62	1389.49	75.24	-949.81	1678270.88	14319340.26	89°25'56.046"N	80°51'57.378"W	952.79	274.529	2.07	-1.76	-2.52
5850.00	25.3502	0.6550	5630.21	1392.44	74.39	-960.97	1678259.72	14319339.41	89°25'56.038"N	80°51'57.520"W	963.85	274.427	0.39	-0.90	-1.00
5875.00	25.3502	0.6550	5653.00	1392.44	74.39	-960.97	1678259.72	14319339.41	89°25'56.038"N	80°51'57.520"W	963.85	274.427	0.39	-0.90	-1.00
5900.00	25.8502	0.6570	5676.41	1405.33	73.67	-1001.42	1678248.22	14319338.69	89°25'56.031"N	80°51'58.035"W	1004.12	274.207	3.66	1.76	7.25
5925.00	26.8502	0.6590	5700.00	1420.27	72.45	-1040.96	1678179.77	14319340.47	89°25'56.050"N	80°51'58.539"W	1043.69	274.146	1.31	-1.26	0.85
5950.00	26.5702	0.6660	5832.79	1427.36	75.90	-1060.82	1678159.91	14319340.82	89°25'56.054"N	80°51'58.792"W	1063.54	274.093	3.62	1.60	-7.36
5975.00	28.8602	0.6587	5911.89	1433.08	74.55	-1081.68	1678139.06	14319339.57	89°25'56.041"N	80°51'59.058"W	1084.24	273.943	8.40	5.09	-14.40
6000.00	29.7002	0.6573	5911.89	1433.08	74.55	-1081.68	1678139.06	14319339.57	89°25'56.041"N	80°51'59.058"W	1084.24	273.943	8.40	5.09	-14.40
6025.00	29.8702	0.6590	5934.11	1438.91	70.89	-1103.36	1678117.39	14319335.92	89°25'56.005"N	80°51'59.334"W	1105.63	273.676	6.21	1.87	-12.11
6050.00	29.8702	0.6590	5934.11	1438.91	70.89	-1103.36	1678117.39	14319335.92	89°25'56.005"N	80°51'59.334"W	1105.63	273.676	6.21	1.87	-12.11
6075.00	29.8702	0.6590	5934.11	1438.91	70.89	-1103.36	1678117.39	14319335.92	89°25'56.005"N	80°51'59.334"W	1105.63	273.676	6.21	1.87	-12.11
6100.00	29.8702	0.6590	5934.11	1438.91	70.89	-1103.36	1678117.39	14319335.92	89°25'56.005"N	80°51'59.334"W	1105.63	273.676	6.21	1.87	-12.11

RECEIVED  
 Office of Oil and Gas  
 OCT 30 2017  
 WV Department of  
 Environmental Protection



# Actual Wellpath Report

Johnston Unit 1H AWP Proj: 20246'  
Page 10 of 17



REFERENCE WELLPATH IDENTIFICATION				
Operator	ANTERO RESOURCES CORPORATION		Slot	Slot #02
Area	Tyler County, WV		Well	Johnston Unit 1H
Field	Tyler		Wellbore	Johnston Unit 1H AWB
Facility	Dale Pad			

WELLPATH DATA (413 stations) † = Interpolated/extrapolated station																
MD (ft)	Inclination (°)	Azimuth (°)	TVD (ft)	Vert Sect (ft)	North (ft)	East (ft)	Grid East (US ft)	Grid North (US ft)	Latitude	Longitude	Closure Dist (ft)	Closure Dir (°)	DLS (ft/100ft)	Build Rate (ft/100ft)	Turn Rate (ft/100ft)	Comments
6256.00	29.920	242.760	5989.08	-437.34	56.48	-1145.12	1678075.65	14319321.51	39°25'55.864"N	80°51'59.867"W	1146.51	272.824	10.00	-0.11	-20.04	
6301.00	29.870	234.400	6028.11	-432.76	44.82	-1164.22	1678056.56	14319309.85	39°25'55.749"N	80°52'00.111"W	1165.08	272.205	9.25	-0.11	-18.58	
6346.00	30.220	226.380	6067.08	-425.06	30.48	-1181.53	1678039.25	14319295.52	39°25'55.607"N	80°52'00.332"W	1181.93	271.478	8.95	0.78	-17.82	
6390.00	31.090	218.520	6104.94	-414.55	13.94	-1196.63	1678024.16	14319278.99	39°25'55.444"N	80°52'00.524"W	1196.71	270.668	9.31	1.98	-17.86	
6428.00†	32.226	212.080	6137.30	-403.08	-2.32	-1208.13	1678012.67	14319262.73	39°25'55.283"N	80°52'00.671"W	1208.13	269.890	9.38	2.99	-16.95	Sycamore: 6428' MD
6435.00	32.470	210.940	6143.21	-400.73	-5.52	-1210.08	1678010.71	14319259.54	39°25'55.252"N	80°52'00.696"W	1210.10	269.739	9.38	3.48	-16.28	
6480.00	34.210	205.580	6180.81	-384.13	-27.29	-1221.76	1677999.04	14319237.77	39°25'55.037"N	80°52'00.845"W	1222.06	268.720	7.60	3.78	-11.91	
6525.00	36.810	199.250	6217.45	-364.70	-51.44	-1231.67	1677989.13	14319213.63	39°25'54.798"N	80°52'00.972"W	1232.75	267.608	10.00	5.78	-14.07	
6570.00	39.890	192.780	6252.75	-342.00	-78.26	-1239.31	1677981.49	14319186.82	39°25'54.533"N	80°52'01.070"W	1241.78	266.387	11.24	6.84	-14.38	
6614.00	43.130	186.300	6285.71	-316.54	-106.99	-1244.09	1677976.72	14319158.10	39°25'54.249"N	80°52'01.131"W	1248.68	265.085	12.22	7.36	-14.73	
6651.00†	45.887	182.329	6312.10	-292.83	-132.84	-1246.02	1677974.79	14319132.26	39°25'53.994"N	80°52'01.156"W	1253.08	263.914	10.59	7.45	-10.73	Middlesex: 6651' MD
6659.00	46.500	181.520	6317.64	-287.46	-138.61	-1246.21	1677974.60	14319126.49	39°25'53.937"N	80°52'01.159"W	1253.90	263.653	10.59	7.67	-10.11	
6704.00	50.840	177.810	6347.36	-255.57	-172.38	-1245.98	1677974.83	14319092.73	39°25'53.603"N	80°52'01.157"W	1257.84	262.123	11.46	9.64	-8.24	
6749.00	54.450	175.320	6374.66	-221.22	-208.08	-1243.82	1677976.99	14319057.05	39°25'53.250"N	80°52'01.130"W	1261.10	260.503	9.15	8.02	-5.53	
6793.00	58.340	172.940	6399.01	-185.63	-244.52	-1240.05	1677980.75	14319020.63	39°25'52.890"N	80°52'01.082"W	1263.93	258.845	9.92	8.84	-5.41	
6813.00†	60.075	171.319	6409.25	-168.80	-261.54	-1237.70	1677983.11	14319003.62	39°25'52.722"N	80°52'01.053"W	1265.03	258.068	11.12	8.67	-8.11	Burkett: 6813' MD
6838.00	62.270	169.370	6421.30	-147.23	-283.13	-1234.02	1677986.78	14318982.04	39°25'52.508"N	80°52'01.006"W	1266.08	257.078	11.12	8.78	-7.79	
6883.00	66.710	168.460	6440.68	-107.08	-322.97	-1226.21	1677994.59	14318942.21	39°25'52.114"N	80°52'00.908"W	1268.03	255.244	10.03	9.87	-2.02	
6884.00†	66.789	168.306	6441.07	-106.17	-323.87	-1226.02	1677994.78	14318941.31	39°25'52.106"N	80°52'00.905"W	1268.08	255.203	16.22	7.90	-15.42	Tully: 6884' MD
6927.00	70.320	161.840	6456.81	-66.31	-362.50	-1215.70	1678005.10	14318902.69	39°25'51.724"N	80°52'00.774"W	1268.59	253.396	16.22	8.21	-15.04	
6972.00	72.270	157.920	6471.24	-23.70	-402.51	-1201.03	1678019.76	14318862.70	39°25'51.328"N	80°52'00.588"W	1266.68	251.472	9.32	4.33	-8.71	
6993.00†	73.362	158.028	6477.45	-3.66	-421.11	-1193.51	1678027.28	14318844.11	39°25'51.144"N	80°52'00.493"W	1265.62	250.566	5.22	5.20	0.51	Marcellus: 6993' MD
7017.00	74.610	158.150	6484.07	19.39	-442.51	-1184.90	1678035.89	14318822.72	39°25'50.932"N	80°52'00.383"W	1264.83	249.521	5.22	5.20	0.51	
7062.00	81.040	159.440	6493.55	63.34	-483.50	-1169.00	1678051.78	14318781.74	39°25'50.527"N	80°52'00.181"W	1265.04	247.530	14.56	14.29	2.87	
7107.00	84.950	160.120	6499.04	107.99	-525.40	-1153.57	1678067.20	14318739.86	39°25'50.113"N	80°51'59.986"W	1267.58	245.513	8.82	8.69	1.51	
7151.00	90.050	159.470	6500.96	151.93	-566.64	-1138.39	1678082.37	14318698.64	39°25'49.705"N	80°51'59.793"W	1271.62	243.538	11.68	11.59	-1.48	
7196.00	90.170	159.360	6500.87	195.93	-608.77	-1122.57	1678098.19	14318656.53	39°25'49.288"N	80°51'59.592"W	1277.01	241.529	0.36	0.27	-0.24	
7286.00	90.080	159.780	6500.68	286.92	-693.11	-1091.15	1678129.59	14318572.22	39°25'48.454"N	80°51'59.193"W	1292.68	237.576	0.48	-0.10	0.47	
7375.00	90.200	159.750	6500.46	375.91	-776.61	-1060.37	1678160.36	14318488.75	39°25'47.628"N	80°51'58.803"W	1314.35	233.781	0.14	0.13	-0.03	
7465.00	90.110	158.950	6500.22	465.90	-860.83	-1028.63	1678192.09	14318404.56	39°25'46.796"N	80°51'58.400"W	1341.31	230.075	0.89	-0.10	-0.85	

RECEIVED  
 Office of Oil and Gas  
 OCT 30 2017  
 WV Department of  
 Environmental Protection



# Actual Wellpath Report

Johnston Unit 1H AWP Proj: 20246'  
Page 11 of 17



REFERENCE WELLPATH IDENTIFICATION			
Operator	ANTERO RESOURCES CORPORATION	Slot	Slot #02
Area	Tyler County, WV	Well	Johnston Unit 1H
Field	Tyler	Wellbore	Johnston Unit 1H AWB
Facility	Dale Pad		

WELLPATH DATA (413 stations)																
MD (ft)	Inclination (°)	Azimuth (°)	TVD (ft)	Vert Sect (ft)	North (ft)	East (ft)	Grid East (US ft)	Grid North (US ft)	Latitude	Longitude	Closure Dist (ft)	Closure Dir (°)	DLS (°/100ft)	Build Rate (°/100ft)	Turn Rate (°/100ft)	Comments
7554.00	88.320	159.200	6501.44	554.86	-943.95	-996.85	1678223.86	14318321.48	39°25'45.974"N	80°51'57.996"W	1372.86	226.561	2.03	-2.01	0.28	
7644.00	89.000	160.790	6503.54	644.83	-1028.49	-966.07	1678254.63	14318236.97	39°25'45.138"N	80°51'57.606"W	1411.06	223.207	1.92	0.76	1.77	
7733.00	89.090	161.830	6505.02	733.80	-1112.79	-937.56	1678283.13	14318152.71	39°25'44.304"N	80°51'57.244"W	1455.10	220.115	1.17	0.10	1.17	
7823.00	88.940	161.750	6506.57	823.76	-1198.27	-909.43	1678311.24	14318067.26	39°25'43.459"N	80°51'56.887"W	1504.30	217.197	0.19	-0.17	-0.09	
7912.00	88.910	159.020	6508.24	912.74	-1282.08	-879.57	1678341.10	14317983.48	39°25'42.630"N	80°51'56.508"W	1554.79	214.452	3.07	-0.03	-3.07	
8002.00	89.460	156.690	6509.52	1002.64	-1365.43	-845.65	1678375.00	14317900.17	39°25'41.806"N	80°51'56.077"W	1606.08	211.771	2.66	0.61	-2.59	
8091.00	89.580	154.600	6510.27	1091.32	-1446.50	-808.95	1678411.69	14317819.13	39°25'41.004"N	80°51'55.611"W	1657.33	209.216	2.35	0.13	-2.35	
8181.00	89.490	157.580	6511.00	1181.05	-1528.76	-772.47	1678448.14	14317736.90	39°25'40.190"N	80°51'55.148"W	1712.84	206.807	3.31	-0.10	3.31	
8270.00	89.490	160.400	6511.79	1270.01	-1611.83	-740.57	1678480.04	14317653.86	39°25'39.369"N	80°51'54.743"W	1773.82	204.677	3.17	0.00	3.17	
8360.00	89.430	162.360	6512.64	1359.99	-1697.11	-711.84	1678508.76	14317568.61	39°25'38.526"N	80°51'54.378"W	1840.36	202.755	2.18	-0.07	2.18	
8449.00	89.580	165.620	6513.41	1448.80	-1782.65	-687.29	1678533.29	14317483.12	39°25'37.680"N	80°51'54.067"W	1910.55	201.084	3.67	0.17	3.66	
8539.00	89.580	167.730	6514.07	1538.26	-1870.22	-666.55	1678554.02	14317395.58	39°25'36.814"N	80°51'53.805"W	1985.45	199.616	2.34	0.00	2.34	
8628.00	89.270	163.500	6514.96	1626.86	-1956.40	-644.45	1678576.12	14317309.43	39°25'35.962"N	80°51'53.525"W	2059.81	198.232	4.77	-0.35	-4.75	
8718.00	89.490	160.230	6515.93	1716.82	-2041.92	-616.44	1678604.12	14317223.95	39°25'35.116"N	80°51'53.169"W	2132.94	196.799	3.64	0.24	-3.63	
8808.00	89.490	159.840	6516.74	1806.81	-2126.50	-585.71	1678634.83	14317139.40	39°25'34.280"N	80°51'52.779"W	2205.69	195.399	0.43	0.00	-0.43	
8897.00	89.520	160.040	6517.50	1895.80	-2210.10	-555.19	1678665.35	14317055.83	39°25'33.453"N	80°51'52.392"W	2278.77	194.101	0.23	0.03	0.22	
8987.00	89.400	158.640	6518.35	1985.78	-2294.31	-523.43	1678697.09	14316971.66	39°25'32.620"N	80°51'51.989"W	2353.26	192.852	1.56	-0.13	-1.56	
9076.00	89.430	159.280	6519.26	2074.75	-2377.37	-491.48	1678729.02	14316888.63	39°25'31.799"N	80°51'51.583"W	2427.64	191.680	0.72	0.03	0.72	
9165.00	89.390	159.780	6520.18	2163.73	-2460.74	-460.36	1678760.13	14316805.29	39°25'30.975"N	80°51'51.188"W	2503.44	190.596	0.56	-0.04	0.56	
9255.00	89.240	160.520	6521.25	2253.73	-2545.39	-429.80	1678790.68	14316720.68	39°25'30.137"N	80°51'50.801"W	2581.42	189.584	0.84	-0.17	0.82	
9344.00	89.450	161.190	6522.27	2342.72	-2629.46	-400.62	1678819.85	14316636.64	39°25'29.306"N	80°51'50.430"W	2659.81	188.663	0.79	0.24	0.75	
9434.00	89.450	161.590	6523.14	2432.70	-2714.75	-371.90	1678848.56	14316551.38	39°25'28.463"N	80°51'50.066"W	2740.11	187.800	0.44	0.00	0.44	
9524.00	89.550	159.550	6523.92	2522.69	-2799.62	-341.96	1678878.49	14316466.55	39°25'27.624"N	80°51'49.686"W	2820.43	186.964	2.27	0.11	-2.27	
9613.00	89.550	162.810	6524.62	2611.67	-2883.85	-313.25	1678907.18	14316382.36	39°25'26.791"N	80°51'49.322"W	2900.81	186.199	3.66	0.00	3.66	
9703.00	89.450	160.650	6525.41	2701.63	-2969.30	-285.04	1678935.38	14316296.94	39°25'25.946"N	80°51'48.964"W	2982.95	185.483	2.40	-0.11	-2.40	
9793.00	89.450	157.930	6526.27	2791.61	-3053.47	-253.22	1678967.19	14316212.80	39°25'25.113"N	80°51'48.560"W	3063.96	184.741	3.02	0.00	-3.02	
9882.00	89.450	155.910	6527.12	2880.43	-3135.34	-218.33	1679002.06	14316130.96	39°25'24.304"N	80°51'48.117"W	3142.94	183.983	2.27	0.00	-2.27	
9972.00	89.420	155.230	6528.01	2970.11	-3217.28	-181.11	1679039.27	14316049.06	39°25'23.493"N	80°51'47.645"W	3222.37	183.222	0.76	-0.03	-0.76	
10061.00	89.390	156.600	6528.94	3058.83	-3298.53	-144.79	1679075.57	14315967.84	39°25'22.690"N	80°51'47.183"W	3301.70	182.513	1.54	-0.03	1.54	
10151.00	89.480	160.520	6529.82	3148.76	-3382.28	-111.91	1679108.45	14315884.13	39°25'21.861"N	80°51'46.766"W	3384.13	181.895	4.36	0.10	4.36	

RECEIVED  
 Office of Oil and Gas  
 OCT 30 2017  
 WV Department of  
 Environmental Protection



**Actual Wellpath Report**  
 Johnston Unit 1H AWP Proj: 20246  
 Page 12 of 17



Operator	ANTERO RESOURCES CORPORATION	Slot	Slot #02
Area	Tyler County, WV	Well	Johnston Unit 1H
Field	Tyler	Wellbore	Johnston Unit 1H AWP
Facility	Date Pad		

**REFERENCE WELLPATH IDENTIFICATION**

MD	Inclination	Azimuth	TVD	Vert Sect	North	East	Grid East	Grid North	Latitude	Longitude	Closure Dist	Closure Dir	DLS	Build Rate	Turn Rate	Comments
10241.00	89.330	165.130	6530.76	3238.65	-3488.24	-85.34	1679135.01	14315798.20	39°25'21.01"N	80°51'46.42"W	3469.29	181.410	5.12	-0.17	5.12	
10330.00	89.540	165.900	6531.64	3327.29	-3554.40	-63.08	1679157.26	14315712.07	39°25'20.159"N	80°51'46.147"W	3554.96	181.017	0.90	0.24	0.87	
10420.00	89.820	166.380	6532.14	3416.84	-3641.78	-41.52	1679178.81	14315624.73	39°25'19.296"N	80°51'45.874"W	3642.02	180.653	0.62	0.31	0.53	
10510.00	89.760	165.170	6532.47	3506.66	-3728.61	-17.89	1679202.43	14315637.93	39°25'18.437"N	80°51'45.575"W	3728.65	180.275	3.57	-0.07	-3.57	
10599.00	90.340	158.880	6532.39	3595.54	-3812.75	11.04	1679231.35	14315453.82	39°25'18.605"N	80°51'45.208"W	3812.77	179.834	4.86	0.65	-4.82	
10688.00	89.170	154.940	6532.77	3684.35	-3894.60	45.94	1679266.23	14315372.00	39°25'16.795"N	80°51'44.764"W	3894.88	179.324	4.62	-1.31	-4.43	
10778.00	88.830	157.250	6534.34	374.08	-3976.87	82.40	1679302.68	14315289.78	39°25'15.982"N	80°51'44.301"W	3977.72	178.813	2.59	-0.38	2.57	
10868.00	88.990	162.130	6536.06	3864.03	-4061.23	113.63	1679333.89	14315205.45	39°25'15.148"N	80°51'43.905"W	4062.82	178.387	5.42	0.18	5.42	
10957.00	89.170	165.130	6537.49	3952.86	-4146.60	138.70	1679358.96	14315120.11	39°25'14.303"N	80°51'43.587"W	4148.92	178.084	3.38	0.20	3.37	
11047.00	89.260	165.390	6538.72	4042.53	-4233.63	161.60	1679381.85	14315033.11	39°25'13.443"N	80°51'43.297"W	4236.71	177.814	0.31	0.10	0.29	
11137.00	89.690	162.900	6539.54	4132.33	-4320.20	186.19	1679406.42	14314946.58	39°25'12.587"N	80°51'42.986"W	4324.21	177.532	2.81	0.48	-2.77	
11584.00	89.820	160.080	6544.95	4578.70	-4734.76	352.63	1679572.80	14314532.19	39°25'08.487"N	80°51'40.873"W	4747.87	175.741	3.70	0.87	3.60	
11674.00	89.970	162.300	6545.11	4668.69	-4819.94	381.65	1679601.81	14314447.03	39°25'07.645"N	80°51'40.505"W	4835.03	175.473	2.47	0.17	2.47	
11753.00	90.120	164.260	6545.04	4757.57	-4905.18	407.25	1679627.40	14314361.84	39°25'06.802"W	80°51'40.180"W	4922.05	175.254	2.21	0.17	2.20	
11853.00	89.750	158.890	6545.13	4847.52	-4990.53	435.69	1679655.82	14314276.51	39°25'05.958"N	80°51'39.820"W	5009.51	175.011	5.98	-0.40	-5.97	
11942.00	89.820	163.690	6545.46	4936.26	-5071.89	471.46	1679691.58	14314195.09	39°25'05.152"N	80°51'39.365"W	5093.86	174.689	5.84	0.07	-5.84	
12032.00	89.820	154.840	6545.74	5025.74	-5153.06	510.54	1679730.65	14314114.05	39°25'04.350"N	80°51'38.669"W	5178.29	174.342	1.28	0.00	1.28	
12122.00	89.630	157.260	6546.18	5115.48	-5235.31	547.07	1679767.16	14314031.84	39°25'03.537"N	80°51'38.405"W	5263.81	174.034	2.70	-0.21	2.69	
12211.00	89.790	159.280	6546.63	5204.41	-5317.98	580.02	1679800.10	14313949.20	39°25'02.719"N	80°51'37.987"W	5349.51	173.775	2.28	0.18	2.27	
12301.00	89.790	163.820	6546.96	5294.37	-5403.33	608.50	1679828.56	14313863.88	39°25'01.875"N	80°51'37.626"W	5437.48	173.575	5.04	0.00	5.04	
12390.00	90.520	168.390	6546.72	5382.90	-5489.70	629.86	1679849.92	14313777.55	39°25'01.021"N	80°51'37.355"W	5525.72	173.456	5.20	0.82	5.13	
12480.00	90.250	163.390	6546.11	5472.46	-5576.96	651.80	1679871.85	14313690.33	39°25'00.159"N	80°51'37.078"W	5614.91	173.334	5.56	-0.30	-5.56	
12569.00	90.310	158.580	6546.68	5561.43	-5661.07	680.79	1679900.82	14313606.24	39°24'59.327"N	80°51'36.710"W	5701.86	173.143	5.40	0.07	-5.40	
12659.00	90.890	157.630	6544.70	5651.35	-5744.57	714.34	1679934.37	14313522.77	39°24'58.501"N	80°51'36.284"W	5788.82	172.912	1.26	0.65	-1.06	
12748.00	90.160	157.860	6543.85	5740.25	-5826.94	748.05	1679968.06	14313440.44	39°24'57.687"N	80°51'35.856"W	5874.76	172.685	0.90	-0.87	0.26	
12838.00	90.220	157.740	6543.56	5830.15	-5910.27	782.06	1680002.05	14313357.15	39°24'56.862"N	80°51'35.424"W	5961.79	172.462	0.15	0.07	-0.13	

RECEIVED  
 Office of Oil and Gas  
 OCT 30 2017  
 WV Department of  
 Environmental Protection



# Actual Wellpath Report

Johnston Unit 1H AWP Proj: 20246

Page 13 of 17



## REFERENCE WELLPATH IDENTIFICATION

Operator	ANTERO RESOURCES CORPORATION
Area	Tyler County, WV
Field	Tyler
Facility	Date Pad
Slot	Johnston Unit 1H AWP
Slot #02	Johnston Unit 1H

WELLPATH DATA (413 stations)		MD	Inclination	Azimuth	TVD	Vert Sect	North	East	Grid East	Grid North	Latitude	Longitude	Closure Dist	Closure Dir	DLS	Build Rate	Turn Rate	Comments
		(ft)	(°)	(°)	(ft)	(ft)	(ft)	(ft)	(ft)	(ft)	(N)	(E)	(ft)	(°)	(ft/100ft)	(°/100ft)	(ft/100ft)	
12927.00	90.120	158.210	5919.07	-5992.77	815.43	1680035.41	14313274.68	39°24'56.045"N	80°51'35.001"W	6048.00	172.251	0.54	-0.11	0.53				
13017.00	90.050	160.230	6009.05	-6076.91	847.36	1680067.33	14313190.57	39°24'55.214"N	80°51'34.596"W	6135.71	172.062	2.25	-0.07	2.24				
13107.00	90.250	164.000	6042.91	-6162.55	874.99	1680094.95	14313104.97	39°24'54.368"N	80°51'34.245"W	6224.36	171.919	4.19	0.21	4.19				
13196.00	90.280	165.730	6187.72	-6248.46	898.23	1680118.18	14313019.09	39°24'53.518"N	80°51'33.951"W	6312.69	171.820	1.94	0.03	1.94				
13286.00	90.250	164.680	6277.40	-6335.47	921.21	1680141.15	14312932.11	39°24'52.658"N	80°51'33.660"W	6402.10	171.727	1.17	-0.03	-1.17				
13375.00	90.250	162.000	6366.27	-6420.73	946.73	1680166.66	14312846.89	39°24'51.815"N	80°51'33.337"W	6490.15	171.612	3.01	0.00	-3.01				
13465.00	90.120	161.390	6456.26	-6505.92	975.74	1680195.69	14312761.73	39°24'50.972"N	80°51'32.969"W	6578.68	171.471	1.79	-0.14	-1.79				
13555.00	90.250	160.900	6541.11	-6591.09	1004.82	1680224.73	14312676.60	39°24'50.130"N	80°51'32.600"W	6667.24	171.332	1.68	0.14	1.68				
13644.00	90.120	160.720	6635.24	-6676.39	1033.34	1680253.24	14312592.33	39°24'49.296"N	80°51'32.238"W	6754.90	171.201	1.33	-0.15	-1.33				
13733.00	90.180	159.380	6724.23	-6759.05	1063.71	1680283.59	14312508.71	39°24'48.466"N	80°51'31.853"W	6842.24	171.056	1.51	0.07	-1.51				
13823.00	89.750	159.950	6814.23	-6843.44	1094.98	1680314.85	14312424.35	39°24'47.635"N	80°51'31.456"W	6930.49	170.909	0.79	-0.48	0.63				
13913.00	90.180	159.930	6904.22	-6927.98	1125.85	1680345.71	14312339.84	39°24'46.799"N	80°51'31.064"W	7018.86	170.770	0.48	-0.48	-0.02				
14002.00	90.220	159.270	6993.21	-7011.40	1156.87	1680376.72	14312256.46	39°24'45.974"N	80°51'30.671"W	7106.20	170.631	0.74	0.04	-0.74				
14092.00	90.180	160.420	7083.21	-7095.88	1187.88	1680407.72	14312172.01	39°24'45.138"N	80°51'30.277"W	7194.62	170.497	1.28	-0.04	1.28				
14181.00	90.280	163.370	7172.19	-7179.18	1219.20	1680439.02	14312088.74	39°24'44.314"N	80°51'29.880"W	7281.97	170.362	2.31	-2.30	-2.30				
14271.00	90.340	160.480	7262.17	-7263.44	1250.83	1680470.64	14312004.52	39°24'44.481"N	80°51'29.479"W	7370.35	170.229	2.35	0.07	2.34				
14360.00	90.310	161.740	7351.16	-7347.64	1279.64	1680499.44	14311920.35	39°24'44.648"N	80°51'29.113"W	7458.24	170.121	1.42	-0.03	1.42				
14450.00	90.180	162.100	7441.13	-7433.20	1307.57	1680527.36	14311834.83	39°24'41.802"N	80°51'28.759"W	7547.33	170.023	0.43	-0.14	0.40				
14539.00	90.310	162.650	7530.07	-7518.02	1334.52	1680554.30	14311750.04	39°24'40.964"N	80°51'28.418"W	7635.54	169.934	0.63	0.15	0.62				
14629.00	90.400	161.700	7620.03	-7603.69	1362.07	1680581.83	14311664.40	39°24'40.117"N	80°51'28.068"W	7724.73	169.844	1.06	0.10	-1.06				
14718.00	90.430	158.300	7709.01	-7687.31	1392.50	1680612.26	14311580.81	39°24'39.290"N	80°51'27.682"W	7812.42	169.733	3.82	0.03	-3.82				
14808.00	90.280	154.550	7798.77	-7769.78	1428.49	1680648.23	14311498.38	39°24'38.474"N	80°51'27.225"W	7900.01	169.582	4.17	-4.17	-4.17				
14897.00	90.370	155.610	7887.39	-7850.50	1465.99	1680685.72	14311417.70	39°24'37.676"N	80°51'26.749"W	7986.20	169.422	1.20	0.10	1.19				
14987.00	90.280	162.690	7977.31	-7934.55	1498.00	1680717.71	14311333.68	39°24'36.844"N	80°51'26.343"W	8074.72	169.309	7.87	-0.10	7.87				
15076.00	89.840	165.080	8066.14	-8020.04	1522.71	1680742.41	14311248.22	39°24'35.999"N	80°51'26.030"W	8163.32	169.250	2.73	-0.49	2.69				
15166.00	90.080	163.260	8155.94	-8106.63	1547.26	1680766.95	14311161.67	39°24'35.143"N	80°51'25.719"W	8252.96	169.194	2.04	0.24	-2.02				
15256.00	89.750	161.100	8245.89	-8192.30	1574.80	1680794.48	14311076.03	39°24'34.296"N	80°51'25.370"W	8342.29	169.119	2.42	-0.34	-2.40				
15345.00	89.720	159.180	8334.88	-8276.01	1605.03	1680824.70	14310992.36	39°24'33.468"N	80°51'24.966"W	8430.21	169.024	2.16	-0.03	-2.16				
15435.00	89.720	159.040	8424.86	-8360.09	1637.12	1680856.78	14310908.31	39°24'32.636"N	80°51'24.579"W	8518.88	168.920	0.16	0.00	-0.16				
15525.00	89.750	161.790	8514.85	-8444.87	1667.29	1680886.93	14310823.56	39°24'31.798"N	80°51'24.197"W	8607.89	168.832	3.06	0.03	3.06				

RECEIVED  
Office of Oil and Gas  
OCT 30 2017  
WV Department of  
Environmental Protection



# Actual Wellpath Report

Johnston Unit 1H AWP Proj: 20246  
Page 14 of 17



## REFERENCE WELLPATH IDENTIFICATION

Operator	ANTERO RESOURCES CORPORATION
Area	Tyler County, WV
Field	Tyler
Facility	Date Pad
Slot	Slot #02
Well	Johnston Unit 1H
Wellbore	Johnston Unit 1H AWP

MD	Inclination	Azimuth	TVD	Vert Sect	North	East	Grid East	Grid North	Latitude	Longitude	Closure Dist	Closure Dir	DLS	Build Rate	Turn Rate	Comments
15614.00	89.720	161.920	6537.00	-8529.45	1695.00	1680914.63	14310739.02	39°24'30.962"N	80°51'23.845"W	8696.23	168.760	0.15	-0.03	0.15	0.15	
15704.00	89.660	159.610	6537.48	-8693.81	-8614.41	1724.65	1680944.27	39°24'30.121"N	80°51'23.469"W	8785.36	168.679	2.57	-0.07	-2.57	-0.40	
15794.00	89.780	159.250	6537.92	-8698.68	8783.80	1756.27	1680975.88	39°24'29.288"N	80°51'23.068"W	8874.20	168.585	0.42	0.13	-0.40	-0.02	
15884.00	89.660	159.230	6538.36	-8782.83	8873.78	1768.17	1681007.77	39°24'28.456"N	80°51'22.663"W	8963.02	168.492	0.14	-0.13	-0.02	0.40	
15973.00	89.750	159.590	6538.82	-8866.14	1819.47	1681038.05	14310402.45	39°24'27.632"N	80°51'22.266"W	9050.91	168.403	0.42	0.10	0.40	0.77	
16063.00	89.720	160.280	6539.24	-8950.68	1850.35	1681069.92	14310317.95	39°24'26.796"N	80°51'21.875"W	9139.94	168.320	0.77	-0.03	0.77	0.91	
16152.00	89.690	161.090	6539.70	-9034.67	1879.78	1681099.34	14310234.00	39°24'25.965"N	80°51'21.501"W	9228.15	168.247	0.91	-0.03	0.91	-0.37	
16242.00	89.690	161.750	6540.18	-9119.73	1909.20	1681128.74	14310148.97	39°24'25.124"N	80°51'21.128"W	9317.43	168.176	0.37	0.06	-0.37	1.11	
16332.00	89.750	161.760	6540.62	-9204.95	1938.11	1681157.65	14310066.78	39°24'24.281"N	80°51'20.762"W	9406.78	168.110	1.11	0.07	1.11	1.34	
16421.00	89.540	162.650	6541.18	-9289.76	1965.09	1681184.61	14309979.01	39°24'23.443"N	80°51'20.420"W	9495.33	168.056	1.36	-0.24	1.34	2.26	
16511.00	90.000	164.880	6541.54	-9376.28	1989.95	1681209.46	14309892.55	39°24'22.588"N	80°51'20.105"W	9585.10	168.018	2.31	0.51	2.26	-0.10	
16601.00	90.150	164.890	6541.42	-9590.22	2013.34	1681232.84	14309805.68	39°24'21.728"N	80°51'19.809"W	9674.97	167.989	0.19	-0.17	-0.10	-2.39	
16690.00	89.970	162.760	6541.33	-9679.06	2038.13	1681257.62	14309720.24	39°24'20.883"N	80°51'19.495"W	9763.73	167.951	2.40	-0.20	-2.39	-2.23	
16780.00	89.910	160.750	6541.42	-9769.03	2066.31	1681285.79	14309634.80	39°24'20.038"N	80°51'19.137"W	9853.20	167.895	2.23	-0.07	-2.23	-3.22	
16870.00	90.030	157.850	6541.47	-9858.00	2098.11	1681317.59	14309550.65	39°24'19.205"N	80°51'18.734"W	9942.19	167.817	3.22	0.13	-3.22	-0.08	
16959.00	89.940	157.780	6541.49	-9947.91	2131.72	1681351.18	14309468.28	39°24'18.390"N	80°51'18.307"W	10029.85	167.729	0.13	-0.10	-0.08	3.42	
17049.00	89.810	160.860	6541.69	-9884.89	2163.50	1681382.94	14309384.94	39°24'17.558"N	80°51'17.904"W	10118.88	167.654	3.43	-0.14	3.42	-1.48	
17139.00	89.970	159.520	6541.86	-9969.56	2194.00	1681413.43	14309299.48	39°24'16.720"N	80°51'17.518"W	10208.12	167.589	1.50	0.18	-1.48	-1.82	
17229.00	89.970	157.430	6541.91	-10053.28	2227.02	1681446.44	14309215.80	39°24'15.892"N	80°51'17.099"W	10296.99	167.509	2.32	0.00	-2.32	0.98	
17318.00	89.970	155.810	6541.95	-10306.63	2262.34	1681481.74	14309134.14	39°24'15.084"N	80°51'16.650"W	10384.40	167.417	1.82	0.00	-1.82	1.26	
17408.00	89.910	156.690	6542.05	-10217.35	2298.58	1681517.97	14309051.79	39°24'14.270"N	80°51'16.190"W	10472.71	167.321	0.98	-0.07	0.98	1.38	
17498.00	90.030	157.820	6542.09	-10300.34	2333.38	1681552.76	14308968.83	39°24'13.448"N	80°51'15.749"W	10561.33	167.236	1.26	-0.10	1.38	1.40	
17587.00	89.940	159.050	6542.12	-10383.11	2366.09	1681585.46	14308886.09	39°24'12.630"N	80°51'15.334"W	10649.29	167.163	1.39	-0.10	1.40	1.58	
17677.00	89.940	160.310	6542.21	-10467.51	2397.35	1681616.70	14308801.73	39°24'11.796"N	80°51'14.937"W	10738.53	167.100	1.40	0.00	1.40	-0.07	
17767.00	89.880	161.730	6542.35	-10552.62	2426.62	1681645.85	14308716.66	39°24'10.954"N	80°51'14.566"W	10828.03	167.014	1.58	-0.07	1.58	2.00	
17856.00	90.000	163.510	6542.45	-10637.55	2453.20	1681672.53	14308631.76	39°24'10.114"N	80°51'14.229"W	10916.76	166.914	2.00	0.00	2.00	-0.81	
17946.00	90.000	162.780	6542.45	-10723.68	2479.30	1681698.61	14308544.66	39°24'09.262"N	80°51'13.899"W	11006.56	166.982	0.81	0.00	-0.81	-2.53	
18036.00	90.060	160.500	6542.40	-10809.09	2507.64	1681726.95	14308460.28	39°24'08.418"N	80°51'13.539"W	11096.16	166.939	2.53	0.07	-2.53	-0.26	
18126.00	89.970	160.270	6542.38	-10892.93	2537.52	1681756.81	14308376.48	39°24'07.589"N	80°51'13.160"W	11184.58	166.887	0.28	-0.10	-0.26	0.22	
18216.00	89.810	160.470	6542.55	-10977.70	2567.75	1681787.04	14308291.74	39°24'06.750"N	80°51'12.777"W	11274.01	166.835	0.28	-0.18	0.22		

RECEIVED  
Office of Oil and Gas  
OCT 30 2017  
WV Department of  
Environmental Protection



### Actual Wellpath Report

Johnston Unit 1H AWP Proj: 20246

Page 15 of 17



#### REFERENCE WELLPATH IDENTIFICATION

Operator	ANTERO RESOURCES CORPORATION
Area	Tyler County, WV
Field	Tyler
Facility	Johnston Unit 1H AWP
Date Pad	Slot #02

#### WELLPATH DATA (413 stations)

MD	Inclination	Azimuth	TVD	Vert Sect	North	East	Grid East	Grid North	Latitude	Longitude	Closure Dist	DLS	Build Rate	Turn Rate	Comments
18305.00	11292.97	11062.79	2597.07	168187.07	14307949.99	39.2405.909	14307949.99	39.2405.909	80°51'12.405"N	11363.54	166.789	1.16	0.07	1.16	
18395.00	11382.88	11148.78	2623.60	1681842.86	14308120.73	39.2405.059	14308120.73	39.2405.059	80°51'12.069"N	11453.32	166.758	2.99	0.11	2.99	
18484.00	11471.74	11234.16	2648.73	1681867.98	14308035.39	39.2404.214	14308035.39	39.2404.214	80°51'11.751"N	11542.19	166.733	1.37	-0.21	-1.35	
18574.00	11561.71	11319.67	2676.78	1681896.02	14307949.99	39.2403.369	14307949.99	39.2403.369	80°51'11.395"W	11631.85	166.696	2.60	-0.20	-2.59	
18664.00	11651.70	11404.16	2707.75	1681926.98	14307865.45	39.2402.533	14307865.45	39.2402.533	80°51'11.002"W	11721.22	166.643	1.80	0.30	-1.78	
18753.00	11740.65	11487.00	2740.29	1681959.51	14307782.65	39.2401.714	14307782.65	39.2401.714	80°51'10.590"W	11809.34	166.583	1.19	-0.27	-1.16	
18843.00	11830.60	11570.74	2773.27	1681992.47	14307698.94	39.2400.886	14307698.94	39.2400.886	80°51'10.171"W	11898.45	166.522	1.04	0.07	1.03	
18933.00	11920.56	11654.58	2806.00	1682025.18	14307615.14	39.2400.057	14307615.14	39.2400.057	80°51'09.756"W	11987.61	166.463	0.83	0.51	-0.66	
19022.00	12009.45	11736.85	2839.93	1682059.10	14307532.90	39.2359.243	14307532.90	39.2359.243	80°51'09.326"W	12075.55	166.398	1.78	-0.07	-1.78	
19112.00	12099.30	11819.78	2874.89	1682094.05	14307450.00	39.2358.423	14307450.00	39.2358.423	80°51'08.882"W	12164.39	166.330	0.76	-0.10	0.76	
19202.00	12189.20	11903.06	2909.03	1682128.17	14307366.76	39.2357.599	14307366.76	39.2357.599	80°51'08.449"W	12253.38	166.267	0.52	-0.07	0.51	
19291.00	12278.18	11986.32	2940.45	1682159.59	14307283.53	39.2356.776	14307283.53	39.2356.776	80°51'08.050"W	12341.72	166.217	3.10	0.07	3.10	
19381.00	12368.17	12071.44	2969.67	1682188.79	14307198.44	39.2355.934	14307198.44	39.2355.934	80°51'07.680"W	12431.36	166.179	0.80	-0.03	0.80	
19471.00	12458.17	12156.44	2999.26	1682218.36	14307113.48	39.2355.093	14307113.48	39.2355.093	80°51'07.305"W	12520.96	166.141	1.38	0.20	-1.37	
19560.00	12547.16	12239.93	3030.07	1682249.16	14307030.02	39.2354.268	14307030.02	39.2354.268	80°51'06.914"W	12609.41	166.096	1.03	-0.25	-1.00	
19650.00	12637.11	12323.76	3062.80	1682281.89	14306946.22	39.2353.439	14306946.22	39.2353.439	80°51'06.499"W	12698.66	166.043	1.40	-0.07	-1.40	
19740.00	12727.09	12408.10	3094.18	1682313.25	14306861.91	39.2352.605	14306861.91	39.2352.605	80°51'06.101"W	12788.08	165.998	3.46	0.03	3.46	
19829.00	12816.08	12492.49	3122.45	1682341.51	14306777.56	39.2351.770	14306777.56	39.2351.770	80°51'05.743"W	12876.80	165.967	0.73	-0.04	0.73	
19919.00	12906.03	12578.13	3150.14	1682369.19	14306691.96	39.2350.923	14306691.96	39.2350.923	80°51'05.392"W	12966.60	165.940	0.63	0.04	0.63	
20009.00	12996.01	12663.62	3178.26	1682397.30	14306606.50	39.2350.078	14306606.50	39.2350.078	80°51'05.035"W	13056.36	165.911	1.29	-0.11	-1.29	
20098.00	13084.99	12747.90	3208.85	1682425.87	14306522.25	39.2349.244	14306522.25	39.2349.244	80°51'04.673"W	13145.07	165.880	0.17	0.11	0.12	
20188.00	13174.97	12833.34	3235.11	1682454.13	14306436.84	39.2348.399	14306436.84	39.2348.399	80°51'04.315"W	13234.83	165.851	0.83	-0.04	0.83	
20246.00	13232.94	12888.52	3252.97	1682471.98	14306381.68	39.2347.854	14306381.68	39.2347.854	80°51'04.088"W	13292.70	165.835	0.00	0.00	0.00	Projected MD at TD, 20246

RECEIVED  
Office of Oil and Gas  
OCT 30 2017  
WV Department of  
Environmental Protection