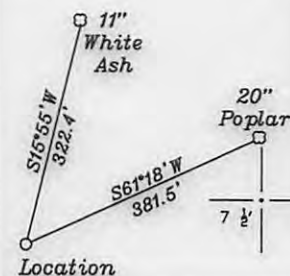
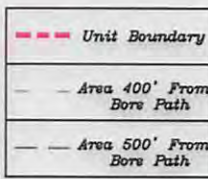
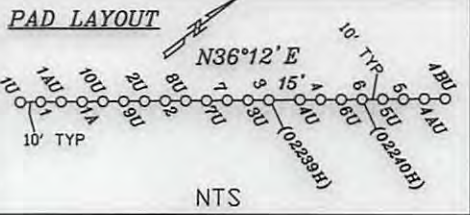


References



Top Hole		
UTM NAD83(meter)-4365424.33 N. 519579.53 E		
Landing Point		
UTM NAD83(meter)-4365533.44 N. 519203.58 E		
Bottom Hole		
UTM NAD83(meter)-4366841.16 N. 517712.73 E		
NUMBER	DIRECTION	DISTANCE
L1	N 72°52' W	1,284.8'
L2	N 55°33' W	896.1'
L3	S 79°46' W	839.0'



- A- Jefferson Minerals, LLC 25.31 ac. TM 11/29 T3056
- B- Riter (Life) 1.63 ac. TM 11/29 T3052A
- C- Vincent 1.82 ac. TM 11/14.4 T3052A
- D- Montgomery 2.18 ac. TM 11/14 T3052A
- E- Tallman 5.135 ac. TM 11/14.5 T3052A
- F- Stillson 0.37 ac. TM 11/28 T3052A
- G- R. Dotson(Life) 1 ac. TM 11/5.2
- H- Montgomery 65 ac. TM 11/ 27 T3055A
- I- Woodburn 1.2 ac. TM 11/ 13.1 T3052
- J- Kyle Est. 50 ac. TM 11/ 36.1 T3055B
- K- Woodburn et al 1.5 ac. TM 11/ 44
- L- Woodburn et al 0.756 ac. TM 11/ 45
- M- Woodburn et al 30.05 ac. TM 11/ 13 T3052
- O- Woodburn et al 35 ac. TM 11/ 43
- P- Woodburn et al 6.75 ac. TM 11/ 44
- Q- Haught 93 ac. TM 6/ 40 T1-03
- R- Nichols 133.71 ac. TM 11/ 49 T1-03

- S- Janet Baker et al 115 ac. TM 6/ 41 T1-03
- T- Coastal Lumber Co. 119 ac. TM 11/ 3 T3134
- U- Booher 25 ac. TM 11/ 10 T1-03
- V- Underwood 136 ac. TM 11/ 4 T3158
- W- Tallman 0.38 ac. TM 11/ 14.2 T3052A
- X- Holliday 0.56 ac. TM 11/ 30.2
- Y- Holliday 0.52 ac. TM 11/ 30.3
- Z- Woodburn 2 ac. TM 11/ 14.1 T3052B
- AA- Corby 18.74 ac. TM 6/ 46
- BB- Corby 16.73 ac. TM 6/ 47
- CC- McIntyre 19.78 ac. TM 6/ 48

Notes:

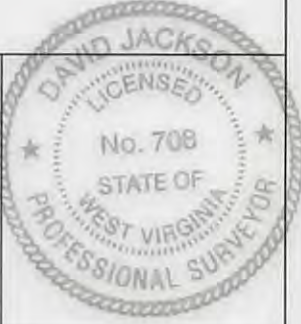
- All wells within 500' of the horizontal leg are shown on this plat based upon information taken from DEP mapping, well plats, & aerial photos.
- Well bore path and surface hole location are over 400' from the unit boundary.
- Ties to wells and corners are based on State Plane Grid North-WV North Zone NAD 83.
- No water wells were found within 250' of the well location. A house was found N55°54'W 614.3' from the center of the well pad.

(+) DENOTES LOCATION OF WELL ON UNITED STATES TOPOGRAPHIC MAPS

FILE NO. _____
 DRAWING NO. 1
 SCALE 1" = 2000'
 MINIMUM DEGREE OF ACCURACY 1 in 200
 PROVEN SOURCE OF ELEVATION GPS
submeter unit

I THE UNDERSIGNED, HEREBY CERTIFY THAT THIS PLAT IS CORRECT TO THE BEST OF MY KNOWLEDGE AND BELIEF AND SHOWS ALL THE INFORMATION REQUIRED BY LAW AND THE RULES ISSUED AND PRESCRIBED BY THE DEPARTMENT OF ENVIRONMENTAL PROTECTION.

(SIGNED) David J. Jackson
 R.P.E. _____ P.L.S. 708



STATE OF WEST VIRGINIA
 Division of Environmental Protection
 OFFICE OF OIL AND GAS

DATE November 16, 2015
 OPERATOR'S WELL NO. Dopey 7U
 API WELL NO. 47 095 02311 H6A

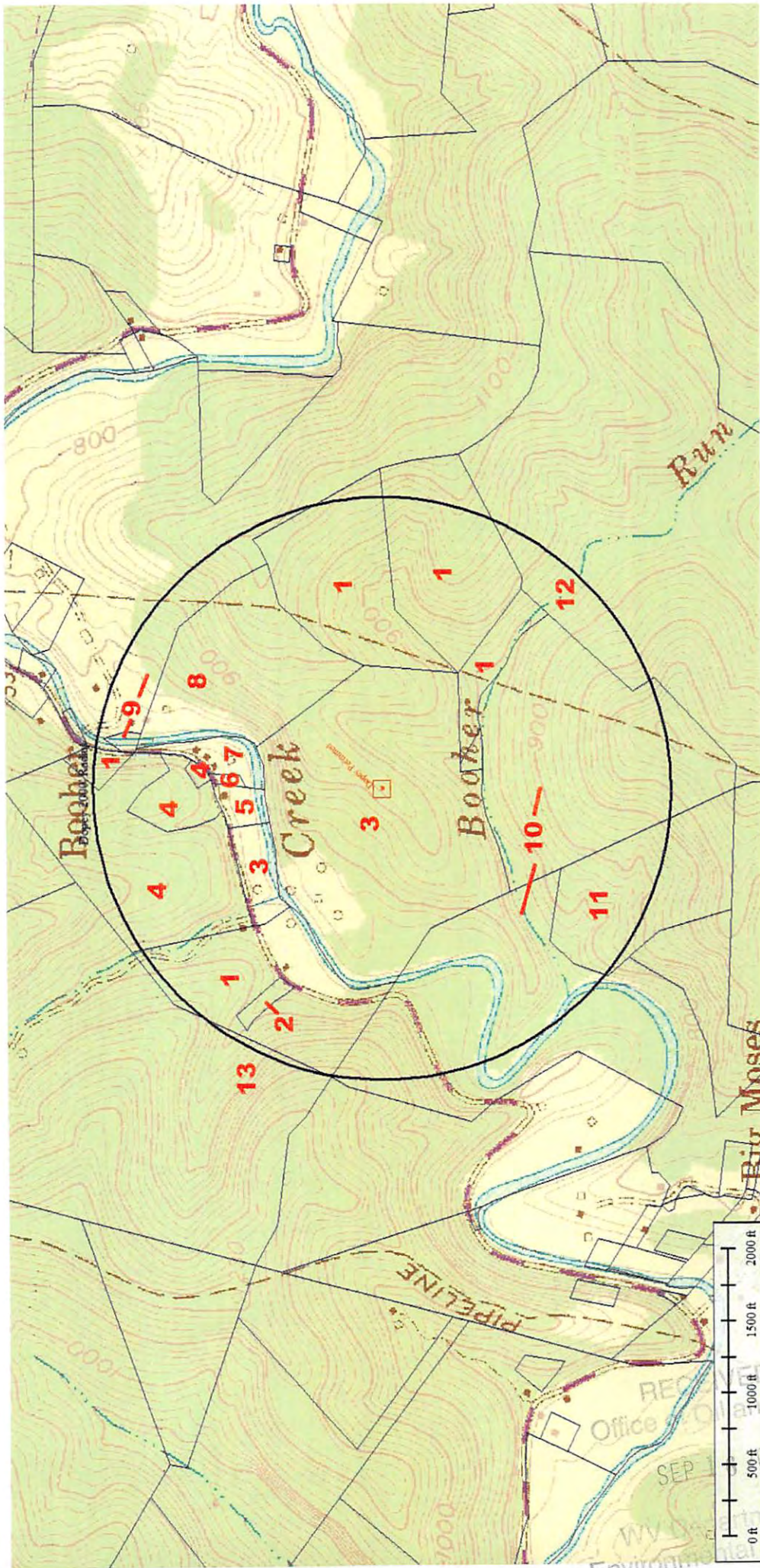
WELL TYPE: OIL X GAS X LIQUID INJECTION WASTE DISPOSAL STATE COUNTY PERMIT
 (IF "GAS") PRODUCTION X STORAGE DEEP X SHALLOW

LOCATION: ELEVATION 910.64' WATER SHED Indian Creek
 DISTRICT McElroy COUNTY Tyler
 QUADRANGLE Shirley 7 1/2'

SURFACE OWNER John & Patty Montgomery ACREAGE 65 ac **02/05/2016**
 OIL & GAS ROYALTY OWNER & LEASE NO. T3055A-John & Patty Montgomery; T3052-William F. & Janet Woodburn; T3158-Mark & Teresa Underwood; T3134-John W. Kerns Trust; T1-03-Darrell D. Wright

PROPOSED WORK: DRILL X CONVERT DRILL DEEPER REDRILL FRACTURE OR STIMULATE X PLUG OFF OLD FORMATION PERFORATE NEW FORMATION X OTHER PHYSICAL CHANGE IN WELL (SPECIFY) _____

PLUG AND ABANDON CLEAN OUT AND REPLUG
 TARGET FORMATION Utica ESTIMATED DEPTH TVD 10,785'; TMD 18,000'
 WELL OPERATOR Jay Bee Oil & Gas, Inc. DESIGNATED AGENT Randy Broda
 ADDRESS 1720 Rt. 22, East Union, NJ 07083 ADDRESS 3570 Shields Hill Road, Cairo, WV 26337



02/05/2016

REC Office
WV Environmental Protection