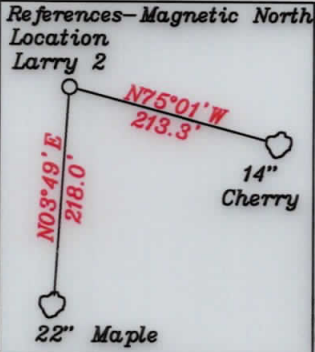


LATITUDE 39-30-00 N (TH)  
LATITUDE 39-27-30 N (BH)



5. Well head was field located by Jackson Surveying using RTK GPS and is based upon an OPUS solution.  
6. Leg and BH Locations are based upon a Drilling Report by Cyrodata dated October 30, 2016.

- A-Peak TM 26-46.8 2.079 Ac.
- B-Peak TM 26-46.20 0.652 Ac.
- C-Peak TM 26-46.19 4.59 Ac.
- D-Peak TM 26-46.21 0.22 Ac.
- E-Sulser TM 20-110 4.412 Ac.
- F-Kelly TM 26-46.18 4.323 Ac.
- G-Kelly TM 26-46.17 4.114 Ac.
- H-Johnson TM 26-46.23 3.598 Ac.
- I-Johnson TM 26-46.22 2.92 Ac.
- J-Holliday TM 26-46.13 5.94 Ac.
- K-Holliday TM 26-46.12 3.238 Ac.
- L-Kanz TM 26-46.3 5.4 Ac.
- M-Patera TM 26-46.7 7.32 Ac. TM 26/19.11
- N-JayBee TM 26-46.14 8.692 Ac. 9.4 Ac.
- O-Pittman TM 26-46.2 5.135 Ac.
- P-Johnson TM 26-46.9 5 Ac.
- Q-Patera TM 26-46.6 1.702 Ac.
- R-Patera TM 26-46.15 3.722 Ac.
- S-JayBee TM 26-46.16 5.094 Ac.
- T-Shrader TM 26-46.1 5.58 Ac.
- U-Ison TM 26-46.10 4.98 Ac.
- V-Doty TM 26-46.5 13.14 Ac.
- W-Kanz TM 26-46.4 8.1 Ac.
- X-Walton TM 26-46.11 6.43 Ac.
- Y-JayBee TM 26-46.24 3.059 Ac.
- Z-JayBee TM 26-19.9 1.496 Ac.

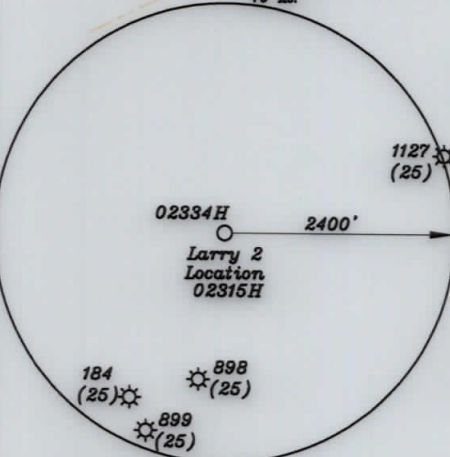
NORTH

NUMBER	DIRECTION	DISTANCE
L1	N69°15' E	988'
L2	N16°28' E	2,478'
L3	S19°38' E	956'

- 500' from Bore Path
- AsDrilled Path
- Permitted Path

Notes:

1. All wells within 500' of the horizontal leg are shown on this plat based upon information taken from DEP mapping, well plats, & aerial photos.
2. Well bore path and surface hole location are over 400' from all lease lines.
3. Ties to wells and corners are based on State Plane Grid North-WV North Zone NAD 83.
4. No water wells were found within 250' of the well location. A house was found S64°59'W 580' from the center of the well pad. A wetlands is located 103' from LOD.



(+) DENOTES LOCATION OF WELL ON UNITED STATES TOPOGRAPHIC MAPS

Top Hole	UTM NAD 83(Meters)- 4369517.8 N, 510260.1 E
Landing Point	UTM NAD 83(Meters)- 4369244.9 N, 510362.5 E
Bottom Hole	UTM NAD 83(Meters)- 4367208.9 N, 511159.2 E
Top Hole	UTM NAD 83(Meters)- 4369517.8 N, 510260.0 E
Bottom Hole	UTM NAD 83(Meters)- 4367189.5 N, 511175.5 E

FILE NO. \_\_\_\_\_  
DRAWING NO. 1  
SCALE 1" = 2000'  
MINIMUM DEGREE OF ACCURACY 1 in 200  
PROVEN SOURCE OF ELEVATION GPS  
submeter unit

I THE UNDERSIGNED, HEREBY CERTIFY THAT THIS PLAT IS CORRECT TO THE BEST OF MY KNOWLEDGE AND BELIEF AND SHOWS ALL THE INFORMATION REQUIRED BY LAW AND THE RULES ISSUED AND PRESCRIBED BY THE DEPARTMENT OF ENVIRONMENTAL PROTECTION.  
(SIGNED) David L Jackson  
R.P.E. \_\_\_\_\_ P.S. 708



STATE OF WEST VIRGINIA  
Division of Environmental Protection  
OFFICE OF OIL AND GAS

DATE March 05, 2020  
OPERATOR'S WELL NO. Larry 2  
API WELL NO. AsDrilled

WELL TYPE: OIL X GAS X LIQUID INJECTION     WASTE DISPOSAL     STATE 47 COUNTY 095 PERMIT 02315H  
(IF "GAS") PRODUCTION X STORAGE     DEEP     SHALLOW X

LOCATION: ELEVATION 738.9' WATER SHED Middle Island Creek  
DISTRICT Ellsworth COUNTY Tyler  
QUADRANGLE Middlebourne 7 1/2' (TH), Shirley 7 1/2' (BH)

SURFACE OWNER Jay-Bee Oil & Gas, Inc. ACREAGE 286.03 ac.  
OIL & GAS ROYALTY OWNER Ridgetop Capital LP and Ridgetop Capital II, LP LEASE ACREAGE 286.03 ac.  
LEASE NO. RT2

PROPOSED WORK: DRILL     CONVERT     DRILL DEEPER     REDRILL     FRACTURE OR STIMULATE     PLUG OFF OLD FORMATION     PERFORATE NEW FORMATION     OTHER PHYSICAL CHANGE IN WELL (SPECIFY) AsDrilled

PLUG AND ABANDON     CLEAN OUT AND REPLUG      
TARGET FORMATION Marcellus ESTIMATED DEPTH TVD=6,201' TMD=14,099'  
WELL OPERATOR Jay-Bee Oil & Gas, Inc. DESIGNATED AGENT Randy Broda  
ADDRESS 1720 Route 22 E, Union, NJ 07083 ADDRESS 3570 Shields Hill Rd., Cairo, WV 26337