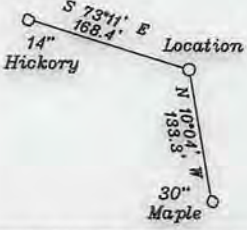
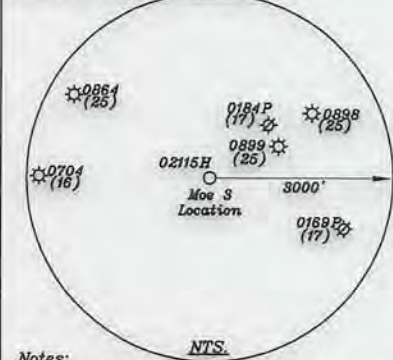


References

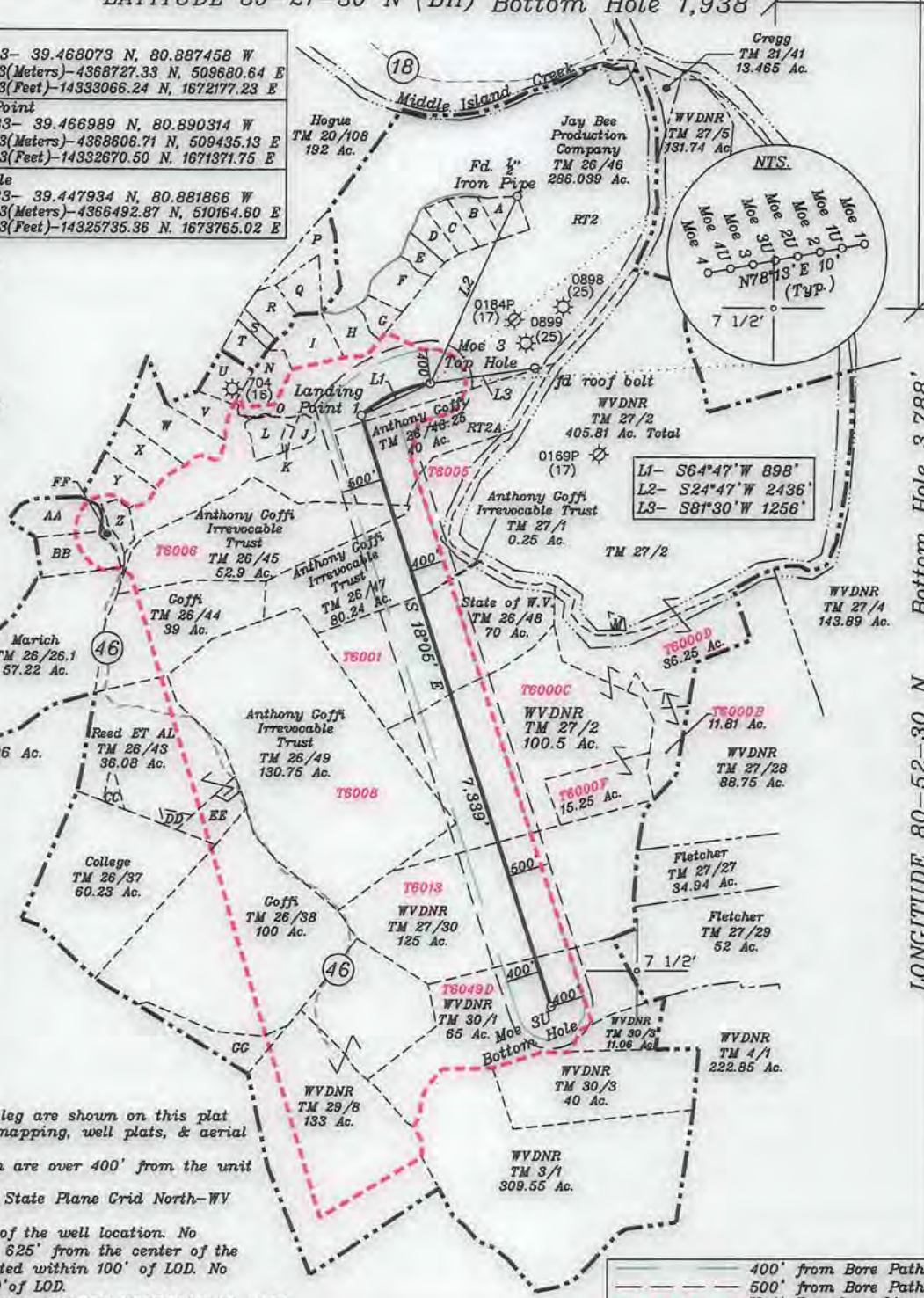


Top Hole  
Geo NAD 83- 39.468073 N, 80.887458 W  
UTM NAD 83(Meters)-4368727.33 N, 509680.64 E  
UTM NAD 83(Feet)-14933066.24 N, 1672177.23 E  
Landing Point  
Geo NAD 83- 39.466989 N, 80.890314 W  
UTM NAD 83(Meters)-4368608.71 N, 509435.13 E  
UTM NAD 83(Feet)-14932670.50 N, 1671371.75 E  
Bottom Hole  
Geo NAD 83- 39.447934 N, 80.881866 W  
UTM NAD 83(Meters)-4366492.87 N, 510164.80 E  
UTM NAD 83(Feet)-149325735.36 N, 1673765.02 E

- A-Sulser TM. 20-110 4.412 Ac.
- B-Kelly et al TM. 26-46.18 4.323 Ac.
- C-Kelly et al TM. 26-46.17 4.114 Ac.
- D-Johnson TM. 26-46.23 3.598 Ac.
- E-Johnson TM. 26-46.22 2.92 Ac.
- F-Holliday TM. 26-46.13 5.94 Ac.
- G-Holliday TM. 26-46.12 3.238 Ac.
- H-Kanz TM. 26-46.3 5.4 Ac.
- I-Patera TM. 26-46.7 7.32 Ac.
- J-Peek TM. 26-46.8 2.079 Ac. DOAN
- K-Peek TM. 26-46.20 0.652 Ac. DOAN
- L-Peek TM. 26-46.19 4.59 Ac. DOAN
- M-WVDNR TM. 27-3 0.44 Ac.
- N-Shrader TM. 26-46.1 5.58 Ac.
- O-Peek TM. 26-46.21 0.22 Ac.
- P-JayBee TM. 26-46.14 8.692 Ac.
- Q-Pittman TM. 26-46.2 5.135 Ac.
- R-Johnson TM. 26-46.9 5 Ac.
- S-Patera TM. 26-46.6 1.702 Ac.
- T-Patera TM. 26-46.15 3.722 Ac.
- U-JayBee TM. 26-46.16 5.094 Ac.
- V-Ison TM. 26-46.10 4.98 Ac.
- W-Doty TM. 26-46.5 13.14 Ac.
- X-Kanz TM. 26-46.4 8.1 Ac.
- Y-Walton TM. 26-46.11 6.43 Ac.
- Z-JayBee TM. 26-46.24 3.059 Ac.
- AA-Palmer TM. 26-19.11 9.40 Ac.
- BB-Westbrook TM. 26-19.4 9.36 Ac.
- CC-Reed TM. 26-41 1 Ac.
- DD-Reed TM. 26-40 2.75 Ac.
- EE-Reed et al TM. 26-39 8.17 Ac.
- FF-JayBee Oil & Gas, Inc. TM. 26-19.9 1.496 Ac.
- GG-WVDNR TM. 29-7 7.5 Ac.



- Notes:
- All wells within 500' of the horizontal leg are shown on this plat based upon information taken from DEP mapping, well plats, & aerial photos.
  - Well bore path and surface hole location are over 400' from the unit boundary.
  - Ties to wells and corners are based on State Plane Grid North-WV North Zone NAD 83.
  - No water wells were found within 250' of the well location. No dwellings or buildings were found within 625' from the center of the proposed pad. No perennial stream is located within 100' of LOD. No producing trout stream located within 300' of LOD.
- (+) DENOTES LOCATION OF WELL ON UNITED STATES TOPOGRAPHIC MAPS



400' from Bore Path  
500' from Bore Path  
Unit Boundary Line

FILE NO. \_\_\_\_\_  
DRAWING NO. 1  
SCALE 1" = 2000'  
MINIMUM DEGREE OF ACCURACY 1 in 200  
PROVEN SOURCE OF ELEVATION GPS  
submeter unit

I THE UNDERSIGNED, HEREBY CERTIFY THAT THIS PLAT IS CORRECT TO THE BEST OF MY KNOWLEDGE AND BELIEF AND SHOWS ALL THE INFORMATION REQUIRED BY LAW AND THE RULES ISSUED AND PRESCRIBED BY THE DEPARTMENT OF ENVIRONMENTAL PROTECTION.  
(SIGNED) David A. Jackson  
R.P.E. \_\_\_\_\_ L.L.S. 708



STATE OF WEST VIRGINIA  
Division of Environmental Protection  
OFFICE OF OIL AND GAS

DATE March 28, 2016  
OPERATOR'S WELL NO. Moe 3U  
API WELL NO. \_\_\_\_\_

WELL TYPE: OIL GAS LIQUID INJECTION \_\_\_\_\_ WASTE DISPOSAL \_\_\_\_\_  
(IF "GAS") PRODUCTION X STORAGE \_\_\_\_\_ DEEP X SHALLOW \_\_\_\_\_  
LOCATION: ELEVATION 961.9' WATER SHED Middle Island Creek  
DISTRICT Ellsworth COUNTY Tyler  
QUADRANGLE Middlebourne 7 1/2'

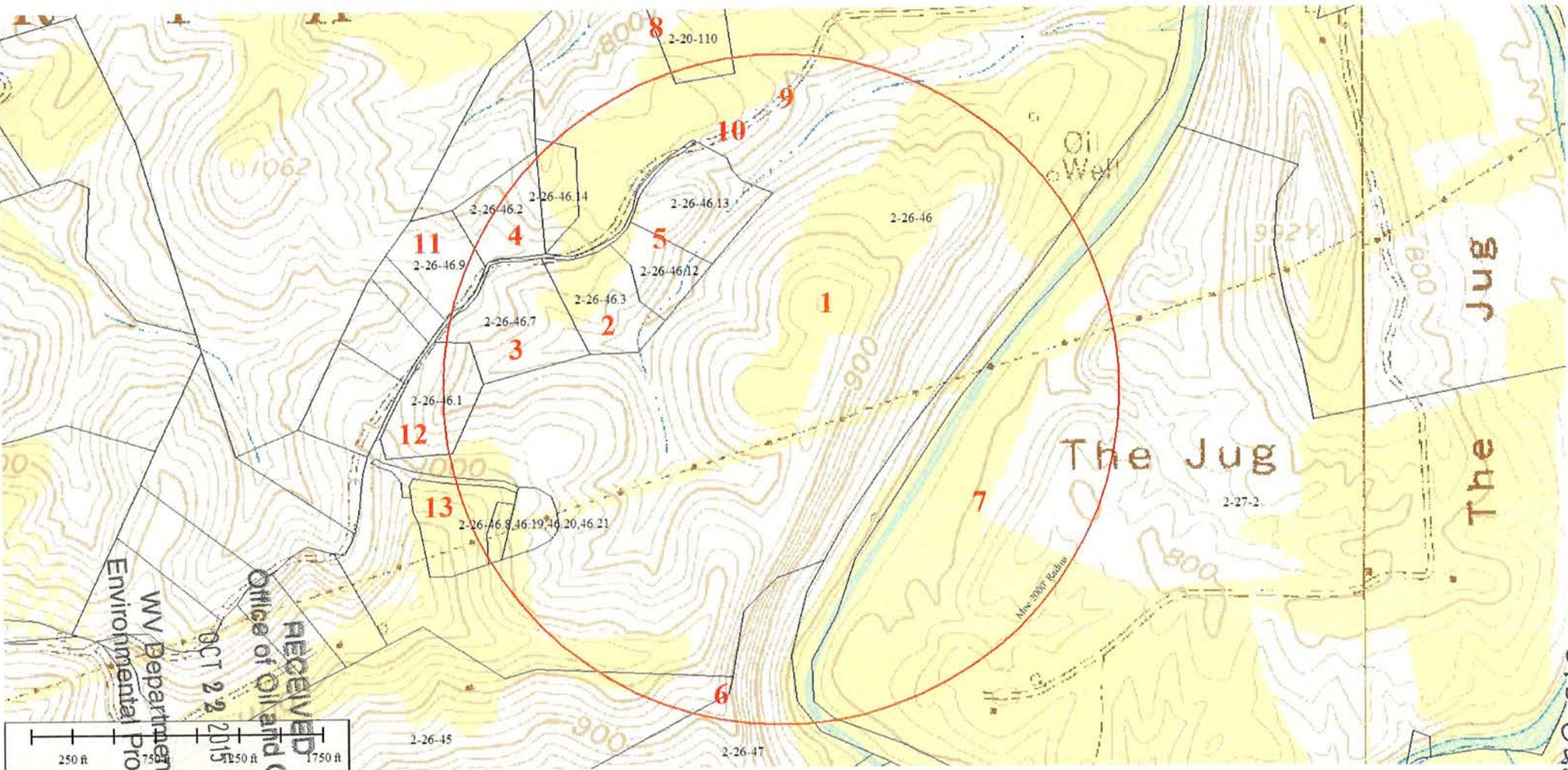
SURFACE OWNER Jay Bee Production Company ACREAGE 286.03 ac.  
OIL & GAS ROYALTY OWNER Ridgetop Capital LP and Ridgetop Capital II, LP LEASE ACREAGE 286.03 ac.  
LEASE NO. RT2

PROPOSED WORK: DRILL X CONVERT \_\_\_\_\_ DRILL DEEPER \_\_\_\_\_ REDRILL \_\_\_\_\_ FRACTURE OR STIMULATE X PLUG OFF OLD FORMATION \_\_\_\_\_ PERFORATE NEW FORMATION X OTHER PHYSICAL CHANGE IN WELL (SPECIFY) \_\_\_\_\_

PLUG AND ABANDON \_\_\_\_\_ CLEAN OUT AND REPLUG \_\_\_\_\_  
TARGET FORMATION Utica ESTIMATED DEPTH TVD = 10,840' TMD = 18,679'  
WELL OPERATOR Jay-Bee Oil & Gas, Inc. DESIGNATED AGENT Randy Broda  
ADDRESS 1720 Route 22 E, Union, NJ 07083 ADDRESS 3570 Shields Hill Rd., Cairo, WV 26337

47 - 095 - 03321 H6A  
05/13/2016





RECEIVED  
Office of Oil and Gas  
OCT 22 2015  
WV Department of  
Environmental Protection

095-09321