



west virginia department of environmental protection

Office of Oil and Gas
601 57th Street, S.E.
Charleston, WV 25304
(304) 926-0450
fax: (304) 926-0452

Earl Ray Tomblin, Governor
Randy C. Huffman, Cabinet Secretary
www.dep.wv.gov

August 16, 2016
PERMIT MODIFICATION APPROVAL
Horizontal 6A / Horizontal 6A Well - 1

JAY-BEE OIL & GAS, INC.
1720 RT. 22 E

UNION, NJ 070830000

Re: Permit Modification Approval for LARRY 3U
47-095-02334-00-00

Extend Lateral to 410' of Boundary

JAY-BEE OIL & GAS, INC.

The Office of Oil and Gas has reviewed the attached permit modification for the above referenced permit. The attached modification has been approved and well work may begin. Please be reminded that the oil and gas inspector is to be notified twenty-four (24) hours before permitted well work is commenced.

If there are any questions, please feel free to contact me at (304) 926- 0450.

James A. Martin
Chief

Operator's Well Number: LARRY 3U
Farm Name: JAY BEE PRODUCTION COMPANY
U.S. WELL NUMBER: 47-095-02334-00-00
Horizontal 6A / Horizontal 6A Well - 1
Date Issued: August 16, 2016

Promoting a healthy environment.

08/19/2016



west virginia department of environmental protection

Oil and Gas Conservation Commission
601 57th Street, SE Charleston, WV 25304
(304)926-0499, Ext 1656

Earl Ray Tomblin, Governor
Randy C. Huffman, Cabinet Secretary
dep.wv.org

August 2, 2016

Department of Environmental Protection
Office of Oil and Gas
Charleston, WV 25304

RE: Application for Deep Well Permit – API #47-095-02334

COMPANY: Jay-Bee Oil & Gas, Inc.

FARM: Larry 3U

COUNTY: Tyler DISTRICT: Ellsworth QUAD: Middlebourne/Shirley

The deep well review of the application for the above company is **APPROVED TO UTICA.**
Modification #2: extended lateral Docket 241-230 Order #2

The applicant has complied with the provision of Chapter 22C-9, of the Code of West Virginia, nineteen hundred and thirty-one (1931), as amended, Oil and Gas Conservation Commission as follows:

1. Comments to Notice of Deviation filed? none
2. Provided a certified copy of duly acknowledged and recorded consent and easement form from all surface owners; yes
3. Provided a tabulation of all deep wells within one mile of the proposed location, including the API number of all deep wells, well name, and the name and address of the operator; * see below
4. Provided a plat showing that the proposed location is a distance of 410 feet from the nearest lease line or unit boundary and showing the following wells drilled to or capable of producing from the objective formation within 3,000 feet of the proposed location.

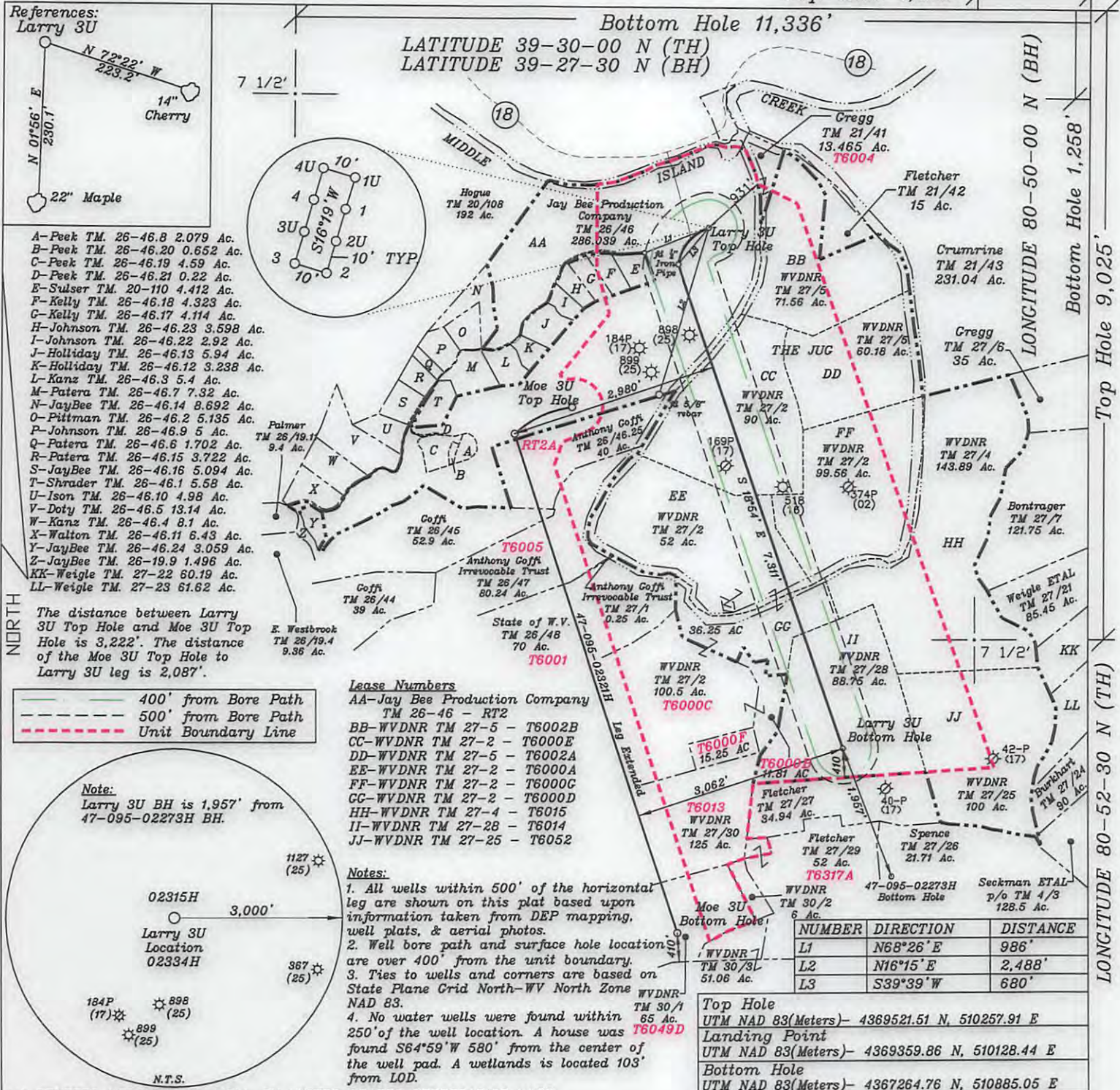
Sincerely,

Cindy Raines
ERP Administrator

*1957' to BH 47-095-02273

*3222' to TH 47-095-02331

*2087' to BH 47-095-02331



(+) DENOTES LOCATION OF WELL ON UNITED STATES TOPOGRAPHIC MAPS

References:
Larry 3U

N 07°56' E 230.7'
N 72°22' W 223.2'
14" Cherry
22" Maple

4U 10'
4 10'
3U 516°19' W 10'
3 10'
2U 10'
2 10'

A-Peek TM. 26-46.8 2.079 Ac.
B-Peek TM. 26-46.20 0.652 Ac.
C-Peek TM. 26-46.19 4.59 Ac.
D-Peek TM. 26-46.21 0.22 Ac.
E-Sulser TM. 20-110 4.412 Ac.
F-Kelly TM. 26-46.18 4.323 Ac.
G-Kelly TM. 26-46.17 4.114 Ac.
H-Johnson TM. 26-46.23 3.598 Ac.
I-Johnson TM. 26-46.22 2.92 Ac.
J-Holliday TM. 26-46.13 5.94 Ac.
K-Holliday TM. 26-46.12 3.238 Ac.
L-Kanz TM. 26-46.3 5.4 Ac.
M-Patera TM. 26-46.7 7.32 Ac.
N-JayBee TM. 26-46.22 8.692 Ac.
O-Pittman TM. 26-46.2 5.135 Ac.
P-Johnson TM. 26-46.9 5 Ac.
Q-Patera TM. 26-46.6 1.702 Ac.
R-Patera TM. 26-46.15 3.722 Ac.
S-JayBee TM. 26-46.16 5.094 Ac.
T-Shrader TM. 26-46.1 5.58 Ac.
U-Ison TM. 26-46.10 4.98 Ac.
V-Doty TM. 26-46.5 13.14 Ac.
W-Kanz TM. 26-46.4 8.1 Ac.
X-Walton TM. 26-46.11 6.43 Ac.
Y-JayBee TM. 26-46.24 3.059 Ac.
Z-JayBee TM. 26-19.9 1.496 Ac.
KK-Weigle TM. 27-22 80.19 Ac.
LL-Weigle TM. 27-23 61.62 Ac.

The distance between Larry 3U Top Hole and Moe 3U Top Hole is 3,222'. The distance of the Moe 3U Top Hole to Larry 3U leg is 2,087'.

Legend:
— 400' from Bore Path
- - - 500' from Bore Path
- - - Unit Boundary Line

Note:
Larry 3U BH is 1,957' from 47-095-02273H BH.

1127 (25)
3,000'
Larry 3U Location 02334H
387 (25)
184P (17)
898 (25)
899 (25)
N.T.S.

Lease Numbers
AA-Jay Bee Production Company TM 26-46 - RT2
BB-WVDNR TM 27-5 - T6002B
CC-WVDNR TM 27-2 - T6000E
DD-WVDNR TM 27-5 - T6002A
EE-WVDNR TM 27-2 - T6000A
FF-WVDNR TM 27-2 - T6000C
GG-WVDNR TM 27-2 - T6000D
HH-WVDNR TM 27-4 - T6015
II-WVDNR TM 27-28 - T6014
JJ-WVDNR TM 27-25 - T6052

Notes:
1. All wells within 500' of the horizontal leg are shown on this plat based upon information taken from DEP mapping, well plats, & aerial photos.
2. Well bore path and surface hole locations are over 400' from the unit boundary.
3. Ties to wells and corners are based on State Plane Crd North-WV North Zone WVDNR NAD 83.
4. No water wells were found within 250' of the well location. A house was found S64°59'W 580' from the center of the well pad. A wetlands is located 103' from LOD.

NUMBER	DIRECTION	DISTANCE
L1	N68°26' E	986'
L2	N16°15' E	2,488'
L3	S39°39' W	680'

Top Hole
UTM NAD 83(Meters)- 4369521.51 N, 510257.91 E
Landing Point
UTM NAD 83(Meters)- 4369359.86 N, 510128.44 E
Bottom Hole
UTM NAD 83(Meters)- 4367264.76 N, 510885.05 E

STATE OF WEST VIRGINIA
Division of Environmental Protection
OFFICE OF OIL AND GAS

WELL TYPE: OIL GAS LIQUID INJECTION WASTE DISPOSAL
(IF "GAS") PRODUCTION STORAGE DEEP SHALLOW

LOCATION: ELEVATION 739.4' WATER SHED Middle Island Creek
DISTRICT Ellsworth COUNTY Tyler
QUADRANGLE Middlebourne 7 1/2' (TH), Shirley 7 1/2' (BH)

SURFACE OWNER Jay Bee Production Company ACREAGE 286.03 ac.
OIL & GAS ROYALTY OWNER Ridgetop Capital LP, and Ridgetop Capital II, LP LEASE ACREAGE 286.03 ac.
LEASE NO. RT2

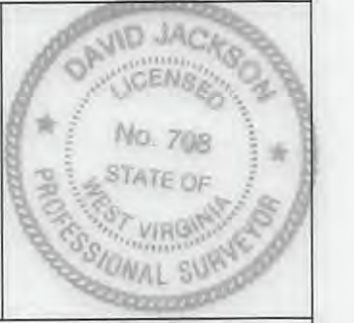
PROPOSED WORK: DRILL CONVERT DRILL DEEPER REDRILL FRACTURE OR STIMULATE PLUG OFF OLD FORMATION PERFORATE NEW FORMATION OTHER PHYSICAL CHANGE IN WELL (SPECIFY)

PLUG AND ABANDON CLEAN OUT AND REPLUG
TARGET FORMATION Utica ESTIMATED DEPTH TVD = 10,615'; TMD = 18,426'
WELL OPERATOR Jay-Bee Oil & Gas, Inc. DESIGNATED AGENT Randy Broda
ADDRESS 1720 Route 22 E, Union, NJ 07083 ADDRESS 3570 Shields Hill Rd., Cairo, WV 26337

I THE UNDERSIGNED, HEREBY CERTIFY THAT THIS PLAT IS CORRECT TO THE BEST OF MY KNOWLEDGE AND BELIEF AND SHOWS ALL THE INFORMATION REQUIRED BY LAW AND THE RULES ISSUED AND PRESCRIBED BY THE DEPARTMENT OF ENVIRONMENTAL PROTECTION.

(SIGNED) David L. Jackson
R.P.E. P.S. 708

DATE July 22, 2016
OPERATOR'S WELL NO. Larry 3U
API WELL NO. 47-095-02334H MUD



08/19/2016



JAY-BEE OIL & GAS, INC.

July 29, 2016

Deep Well Permitting Office
ATTN Cindy Raines
Office of Oil and Gas
West Virginia Dept. of Environmental Protection
601 57th Street SE
Charleston, WV 25304

RE: Larry 3U Wellbore Location Extension Exception Letter Modification #2

Ms. Raines:

Jay-Bee Oil & Gas, Inc. received approval during the hearing 7-27-2016 to drill within 3000' of an additional deep well. This process has created an updated plat for the Larry 3U (API 47-095-02334). The top hole coordinates did not change, but the following changes were made to the previously modified plat:

- The distance has adjusted to 1,957' from the Rymer 4HD.
- The distance from bottom hole to unit boundary adjusted to 410'.
- The bottom hole coordinates adjusted.

Upon review and approval of this plat (a copy was already left with the OGCC at the time of hearing), will you forward this to Laura Adkins of Horizontal Well Permitting?

If you would have any questions concerning this matter, please feel free to contact our office at the numbers listed below.

Sincerely,

Shane Dowell
Office Manager