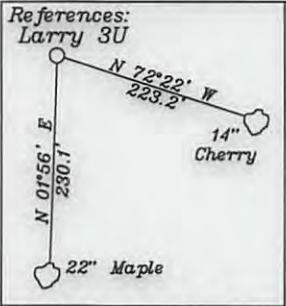
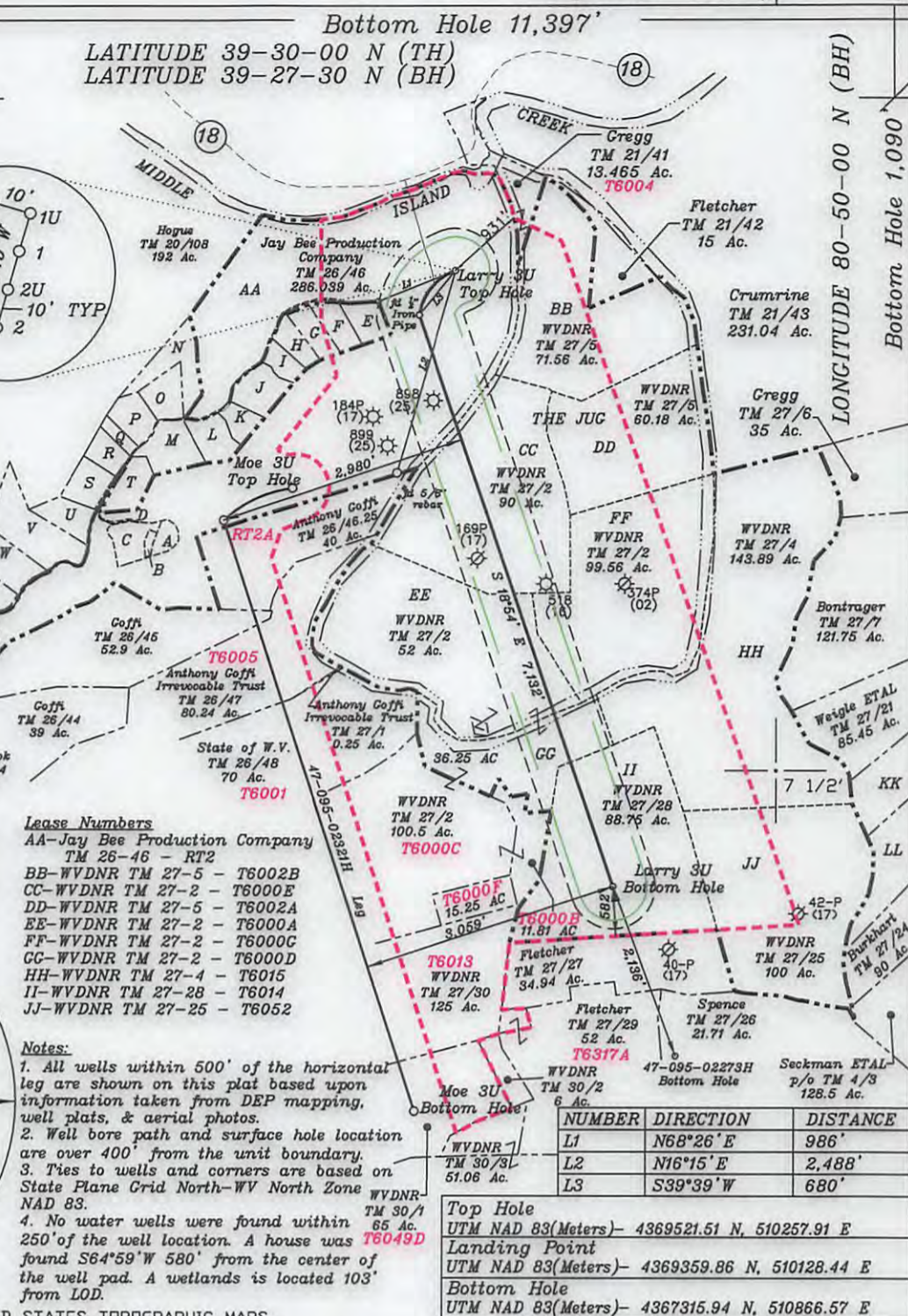
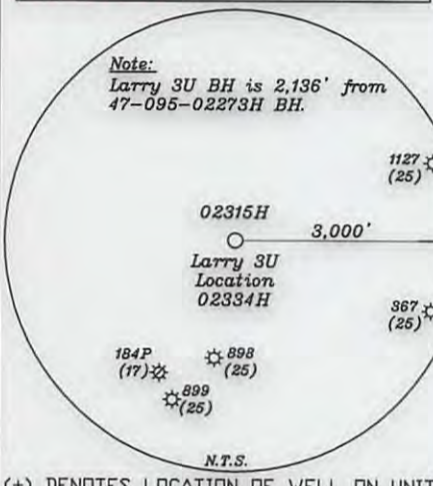
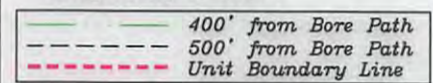


Bottom Hole 11,397'  
 LATITUDE 39-30-00 N (TH)  
 LATITUDE 39-27-30 N (BH)



- A-Peek TM. 26-46.8 2.079 Ac.
- B-Peek TM. 26-46.20 0.852 Ac.
- C-Peek TM. 26-46.19 4.59 Ac.
- D-Peek TM. 26-46.21 0.22 Ac.
- E-Sulser TM. 20-110 4.412 Ac.
- F-Kelly TM. 26-46.18 4.323 Ac.
- G-Kelly TM. 26-46.17 4.114 Ac.
- H-Johnson TM. 26-46.23 3.598 Ac.
- I-Johnson TM. 26-46.22 2.92 Ac.
- J-Holliday TM. 26-46.13 5.94 Ac.
- K-Holliday TM. 26-46.12 3.238 Ac.
- L-Kanz TM. 26-46.3 5.4 Ac.
- M-Patera TM. 26-46.7 7.32 Ac.
- N-JayBee TM. 26-46.14 8.692 Ac.
- O-Pittman TM. 26-46.2 5.135 Ac.
- P-Johnson TM. 26-46.9 5 Ac.
- Q-Patera TM. 26-46.6 1.702 Ac.
- R-Patera TM. 26-46.15 3.722 Ac.
- S-JayBee TM. 26-46.16 5.094 Ac.
- T-Shrader TM. 26-46.1 5.58 Ac.
- U-Ison TM. 26-46.10 4.98 Ac.
- V-Doty TM. 26-46.5 13.14 Ac.
- W-Kanz TM. 26-46.4 8.1 Ac.
- X-Walton TM. 26-46.11 6.43 Ac.
- Y-JayBee TM. 26-46.24 3.059 Ac.
- Z-JayBee TM. 26-19.9 1.496 Ac.
- KK-Weigle TM. 27-22 60.19 Ac.
- LL-Weigle TM. 27-23 61.62 Ac.

The distance between Larry 3U Top Hole and Moe 3U Top Hole is 3,222'. The distance of the Moe 3U Top Hole to Larry 3U leg is 2,087'.



- Lease Numbers**
- AA-Jay Bee Production Company TM 26-46 - RT2
  - BB-WVDNR TM 27-5 - T6002B
  - CC-WVDNR TM 27-2 - T6000E
  - DD-WVDNR TM 27-5 - T6002A
  - EE-WVDNR TM 27-2 - T6000A
  - FF-WVDNR TM 27-2 - T6000C
  - GG-WVDNR TM 27-2 - T6000D
  - HH-WVDNR TM 27-4 - T6015
  - II-WVDNR TM 27-28 - T6014
  - JJ-WVDNR TM 27-25 - T6052

- Notes:**
1. All wells within 500' of the horizontal leg are shown on this plat based upon information taken from DEP mapping, well plats, & aerial photos.
  2. Well bore path and surface hole location are over 400' from the unit boundary.
  3. Ties to wells and corners are based on State Plane Grid North-WV North Zone NAD 83.
  4. No water wells were found within 250' of the well location. A house was found S64°59'W 580' from the center of the well pad. A wetlands is located 103' from LOD.

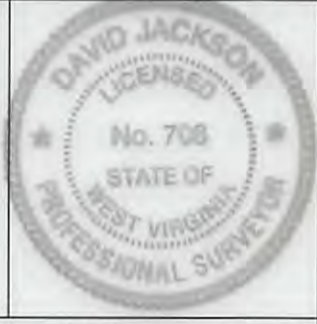
NUMBER	DIRECTION	DISTANCE
L1	N68°26' E	986'
L2	N16°15' E	2,488'
L3	S39°39' W	680'

Top Hole	UTM NAD 83(Meters)- 4369521.51 N, 510257.91 E
Landing Point	UTM NAD 83(Meters)- 4369359.86 N, 510128.44 E
Bottom Hole	UTM NAD 83(Meters)- 4367315.94 N, 510866.57 E

FILE NO. \_\_\_\_\_  
 DRAWING NO. 1  
 SCALE 1" = 2000'  
 MINIMUM DEGREE OF ACCURACY 1 in 200  
 PROVEN SOURCE OF ELEVATION GPS  
submeter unit

I THE UNDERSIGNED, HEREBY CERTIFY THAT THIS PLAT IS CORRECT TO THE BEST OF MY KNOWLEDGE AND BELIEF AND SHOWS ALL THE INFORMATION REQUIRED BY LAW AND THE RULES ISSUED AND PRESCRIBED BY THE DEPARTMENT OF ENVIRONMENTAL PROTECTION.

(SIGNED) David L Jackson  
 R.P.E. \_\_\_\_\_ L.L.S. 708



STATE OF WEST VIRGINIA  
 Division of Environmental Protection  
 OFFICE OF OIL AND GAS

DATE June 10, 2016  
 OPERATOR'S WELL NO. Larry 3U  
 API WELL NO. \_\_\_\_\_

WELL TYPE: OIL GAS  LIQUID INJECTION \_\_\_\_\_ WASTE DISPOSAL \_\_\_\_\_  
 (IF "GAS") PRODUCTION  STORAGE \_\_\_\_\_ DEEP  SHALLOW \_\_\_\_\_  
 LOCATION: ELEVATION 739.4' WATER SHED Middle Island Creek  
 DISTRICT Ellsworth COUNTY Tyler  
 QUADRANGLE Middlebourne 7 1/2' (TH), Shirley 7 1/2' (BH)

SURFACE OWNER Jay Bee Production Company ACREAGE 286.03 ac.  
 OIL & GAS ROYALTY OWNER Ridgetop Capital LP, and Ridgetop Capital II, LP LEASE ACREAGE 286.03 ac.  
 LEASE NO. RT2

PROPOSED WORK: DRILL  CONVERT \_\_\_\_\_ DRILL DEEPER \_\_\_\_\_ REDRILL \_\_\_\_\_ FRACTURE OR STIMULATE  PLUG OFF OLD FORMATION \_\_\_\_\_ PERFORATE NEW FORMATION  OTHER PHYSICAL CHANGE IN WELL (SPECIFY) \_\_\_\_\_

PLUG AND ABANDON \_\_\_\_\_ CLEAN OUT AND REPLUG \_\_\_\_\_  
 TARGET FORMATION Utica ESTIMATED DEPTH TVD = 10,615'; TMD = 18,247'  
 WELL OPERATOR Jay-Bee Oil & Gas, Inc. DESIGNATED AGENT Randy Broda  
 ADDRESS 1720 Route 22 E, Union, NJ 07083 ADDRESS 3570 Shields Hill Rd., Cairo, WV 26337

077012016