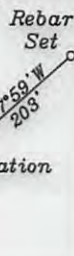


References



- O- Samson TM 6-19 42 Ac. Ls. T1-18
- P- Eidle TM 7-17 23.73 Ac. Ls. T3039E
- Q- T. Lemaster TM. 2-32 1 Ac.
- R- T. Lemaster TM. 3-1 40.84 Ac. Ls. T320
- S- Dwight Lemasters, et al TM. 2-25 29 Ac. Ls. T3209
- T- H. Lemasters TM. 23-15 13.13 Ac. Ls. FoutT38F
- U- Reservation from tract B 1 Ac. Ls. T3085 T6A
- V- Bryant TM 3-21 18.66 Ac.
- W- Thompson TM 7-2 17.5 Ac. Ls. T3040 & 3041AA
- X- Bryant & Alpheus Tennent Hrs. TM 3-20 15 Ac. Ls. T3076A
- Y- Alma Bees & Trees Farm TM 3-2 51.86 Ac.

- Z- Rush TM 2-13 8.88 Ac. Ls. T3089
- AA- Rick Staley et al TM 23-16 13 Ac. Ls. FoutT38E
- BB- Rick Staley et al TM 23-17 15.5 Ac. Ls. FoutT38D
- CC- Rick Staley et al TM 23-18 13 Ac. Ls. FoutT38I
- DD- L. Lemasters TM 23-19 14.75 Ac. Ls. T6805B
- EE- Eidle TM 23-26 26.36 Ac.
- FF- Anderson TM 3-26 6.65 Ac.
- GG- Eidle TM 24-7 31.64 Ac.
- HH- Thompson TM 7-3 17.5 Ac. Ls. T3040 & 3041AA
- II- Thompson TM 7-4 11.66 Ac. Ls. T3040 & 3041AA
- JJ- Jay Bee Royalty TM 7-1 46.84 Ac.
- KK- Weimer TM 3-23 102 Ac.
- LL- Weimer TM 3-22 6.22 Ac.

- A- Parr TM 2-10 104.75 Ac. Ls. T3203
- B- Ferrell & Doak TM 2/11 31 Ac. Ls. T3085 T6A
- C- Rush TM 2-13.1 23.56 Ac. Ls. T3089
- D- Kenneth Jones p/o TM 2-12 61 Ac. Ls. T3087A
- E- Kenneth Jones p/o TM 2-12 31 Ac. Ls. T3087B
- F- Richard Thomaselli TM 2-14 29 Ac. Ls. T3088
- G- Big Run Properties, LLC. TM 2-31 11.5 Ac. Ls. T3209A
- H- Dwight Lemasters, et al TM 2-26 87.06 Ac. Ls. T3086 T-4
- I- McHenry TM 6-15 15.81 Ac. Ls. T3042A3
- J- Bowser TM 6-16 15.82 Ac. Ls. T3042A1
- K- Thompson TM 6-17 26.36 Ac. Ls. T3042A1
- L- Bloom TM 6-18 59.76 Ac. Ls. T3042A1, T3040 & T3041A-A
- M- Myrtle Hannen TM 2-27 98.86 Ac.
- N- Samson TM 6-20 85 Ac.

Surface Hole Location

Geo NAD 83- 39.469730 N, 80.750915 W
 UTM NAD 83 (Meters)- 4368934.8 N, 521425.4 E
 UTM NAD 83 (Feet)- 14333746.9 N, 1710709.9 E

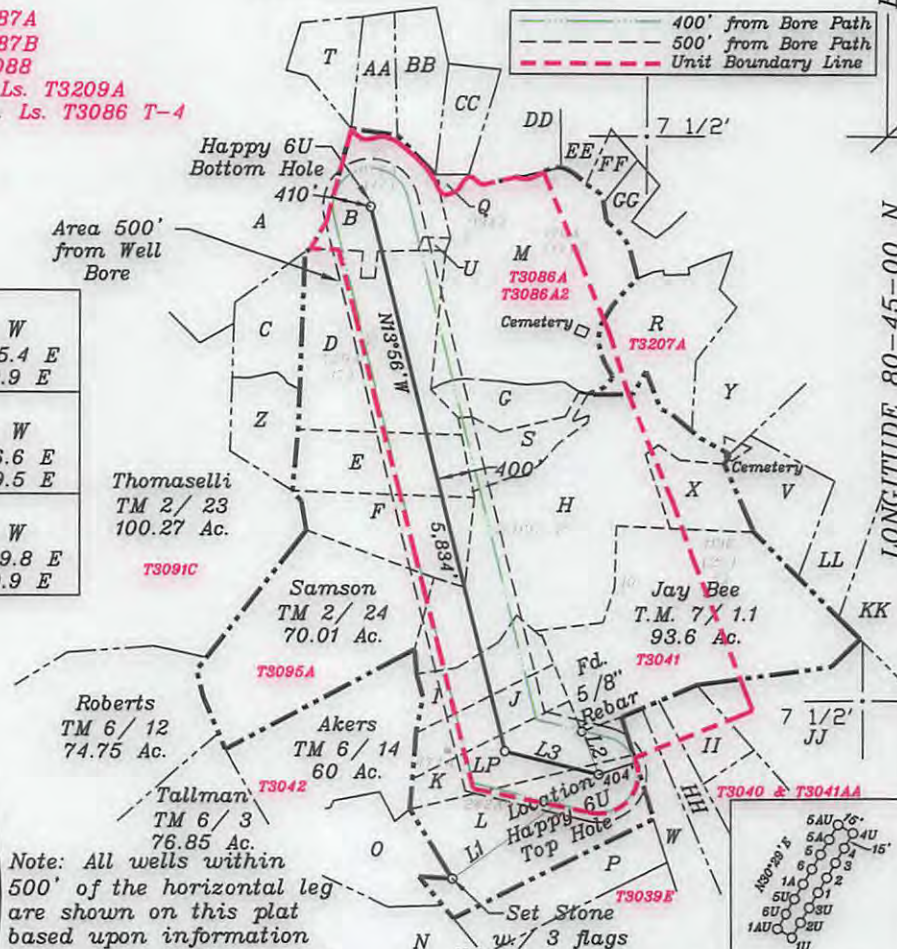
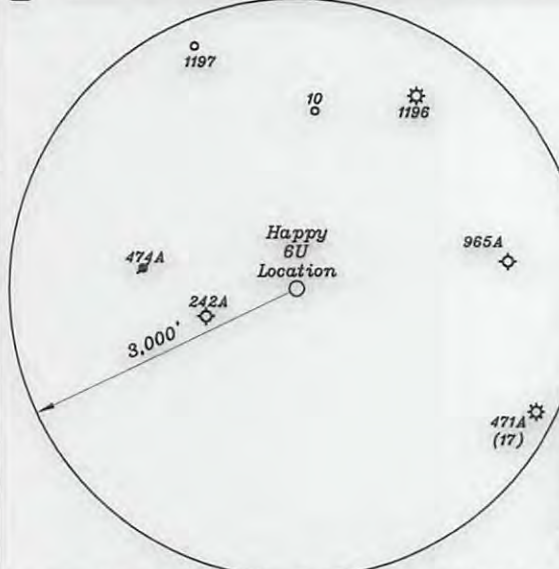
Landing Point

Geo NAD 83- 39.470370 N, 80.754386 W
 UTM NAD 83 (Meters)- 4369004.9 N, 521126.6 E
 UTM NAD 83 (Feet)- 14333976.9 N, 1709729.5 E

Bottom Hole Location

Geo NAD 83- 39.485861 N, 80.759643 W
 UTM NAD 83 (Meters)- 4370722.9 N, 520669.8 E
 UTM NAD 83 (Feet)- 14339613.5 N, 1708230.9 E

NORTH



Note: All wells within 500' of the horizontal leg are shown on this plat based upon information taken from DEP mapping, well plats & aerial photos.

NUMBER	DIRECTION	DISTANCE
L1	N54°36'E	1870'
L2	S21°19'E	480'
L3	N75°50'W	1,007'

Note: Ties to wells and corners are based on State Plane Grid North-WV North Zone NAD 83.

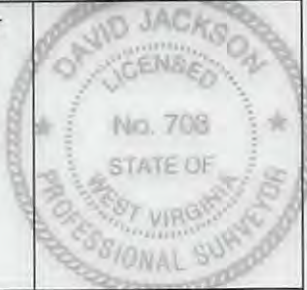
- Notes:
- 1) No water wells were found within 250' of the location. No dwellings or agricultural buildings were found within 625' of the center of the well pad.
 - 2) Information concerning the location of the legs and bottom hole were furnished by Jay Bee Oil and Gas Inc.
 3. Well bore paths and Top Hole location are over 400' from all lease and unit boundary lines.
 4. No deep wells were found within 3,000' of the leg, TH or BH.

(+) DENOTES LOCATION OF WELL ON UNITED STATES TOPOGRAPHIC MAPS

FILE NO. _____
 DRAWING NO. 1
 SCALE 1" = 2000'
 MINIMUM DEGREE OF ACCURACY 1 in 200
 PROVEN SOURCE OF ELEVATION GPS
submeter unit

I THE UNDERSIGNED, HEREBY CERTIFY THAT THIS PLAT IS CORRECT TO THE BEST OF MY KNOWLEDGE AND BELIEF AND SHOWS ALL THE INFORMATION REQUIRED BY LAW AND THE REGULATIONS ISSUED AND PRESCRIBED BY THE DEPARTMENT OF ENERGY.

(SIGNED) David L Jackson
 R.P.E. _____ P.S. 708



STATE OF WEST VIRGINIA
 Division of Environmental Protection
 OFFICE OF OIL AND GAS

DATE October 4, 2016
 OPERATOR'S WELL NO. Happy 6U
 API WELL NO. _____
 WELL TYPE: OIL X GAS X LIQUID INJECTION _____ WASTE DISPOSAL _____
 (IF "GAS") PRODUCTION X STORAGE _____ DEEP X SHALLOW _____
 LOCATION: ELEVATION 1,257' WATER SHED Walnut Fork & Woodburn Run
 DISTRICT McElroy COUNTY Tyler
 QUADRANGLE Shirley 7 1/2'

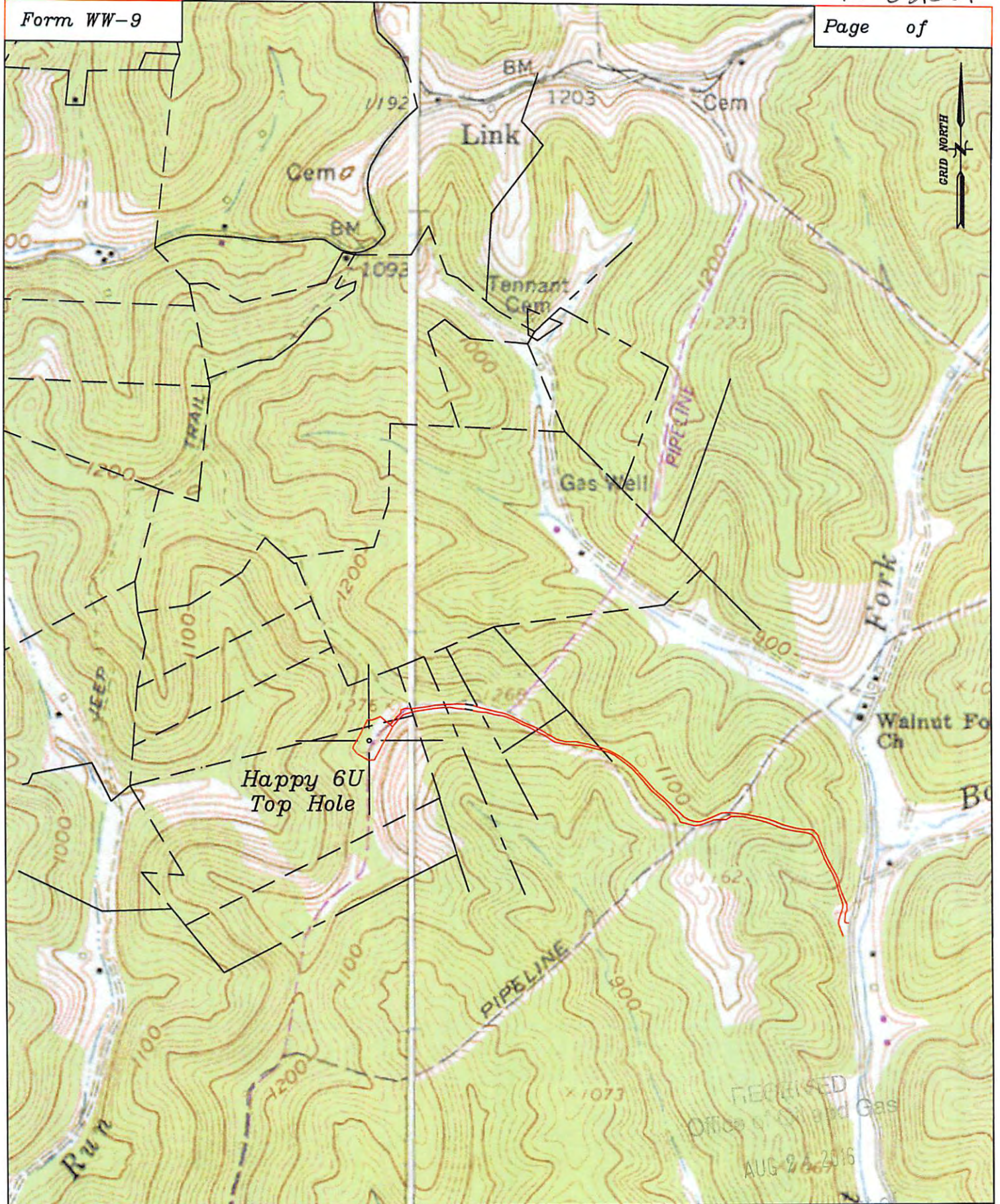
SURFACE OWNER Arthur & Lois Bloom ACREAGE 59.76 ac.
 OIL & GAS ROYALTY OWNER John Lambert Ice LEASE ACREAGE 461.56 ac.

11/18/2016

LEASE NO. & ACREAGE: "See ownership list above for lease numbers"

PROPOSED WORK: DRILL X CONVERT _____ DRILL DEEPER _____ REDRILL _____ FRACTURE OR STIMULATE X PLUG OFF OLD FORMATION _____ PERFORATE NEW FORMATION X OTHER PHYSICAL CHANGE IN WELL (SPECIFY) _____

PLUG AND ABANDON _____ CLEAN OUT AND REPLUG _____
 TARGET FORMATION Utica ESTIMATED DEPTH TVD=11,132' - TMD=18,473'+
 WELL OPERATOR Jay-Bee Oil & Gas, Inc. DESIGNATED AGENT Randy Broda
 ADDRESS 1720 Rt, 22, East Union, NJ 07083 ADDRESS 3570 Shields Hill Rd., Cairo, WV 26337



Well: Happy 6U
 Quad: Shirley 7 1/2'
 District: McElroy
 County: Tyler

WV Department of
 Environmental Protection
 Scale: 1"=1,000'

11/18/2016